

**NORTH COUNTY CORRIDOR  
TRANSPORTATION EXPRESSWAY AUTHORITY  
TECHNICAL ADVISORY COMMITTEE**

**ITEM: 4a**

**SUBJECT:**

Revised Corridor

**STAFF RECOMMENDATIONS:**

Discussion Only

**FISCAL IMPACT:**

Not determined

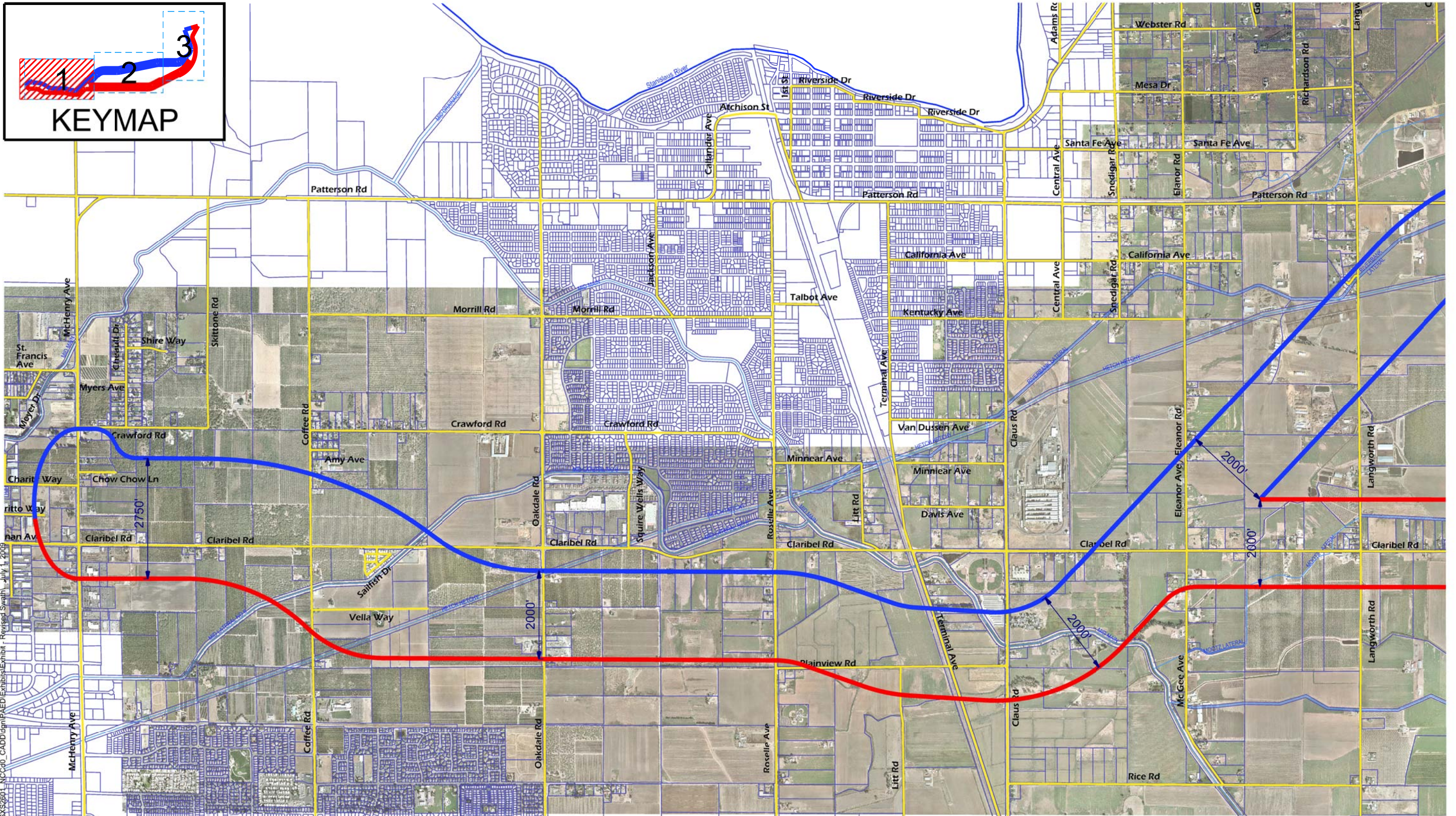
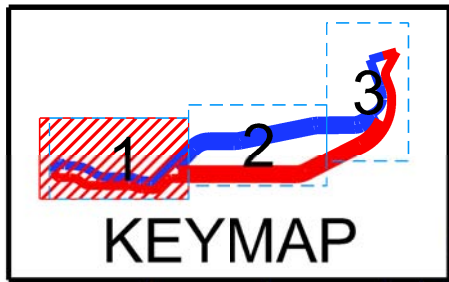
**DISCUSSION:**

The attached mapping depicts the proposed corridor as presented in the Draft Environmental Impact Report. This is a variation of previously presented corridors. The Project Development Team (PDT) approved the proposed corridor at its July 1, 2009 Monthly Teleconference PDT Meeting. The proposed corridor was approved because it is the least environmentally damaging practicable alternative. It lessens the impact to property owners within the original corridors by narrowing the proposed corridor to between 2,750 feet to 2,000 feet (approximately), except at McHenry Blvd. where the corridor is wider to accommodate future interchange plans.

The mapping is posted on the Caltrans Website:

[www.dot.ca.gov/dist10/environmental/projects/northcounty](http://www.dot.ca.gov/dist10/environmental/projects/northcounty)

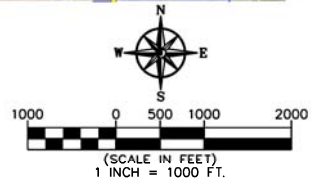




Legend:  
 New Interregional State Route  
 Common Corridor A & B  
 Corridor B  
 Corridor A

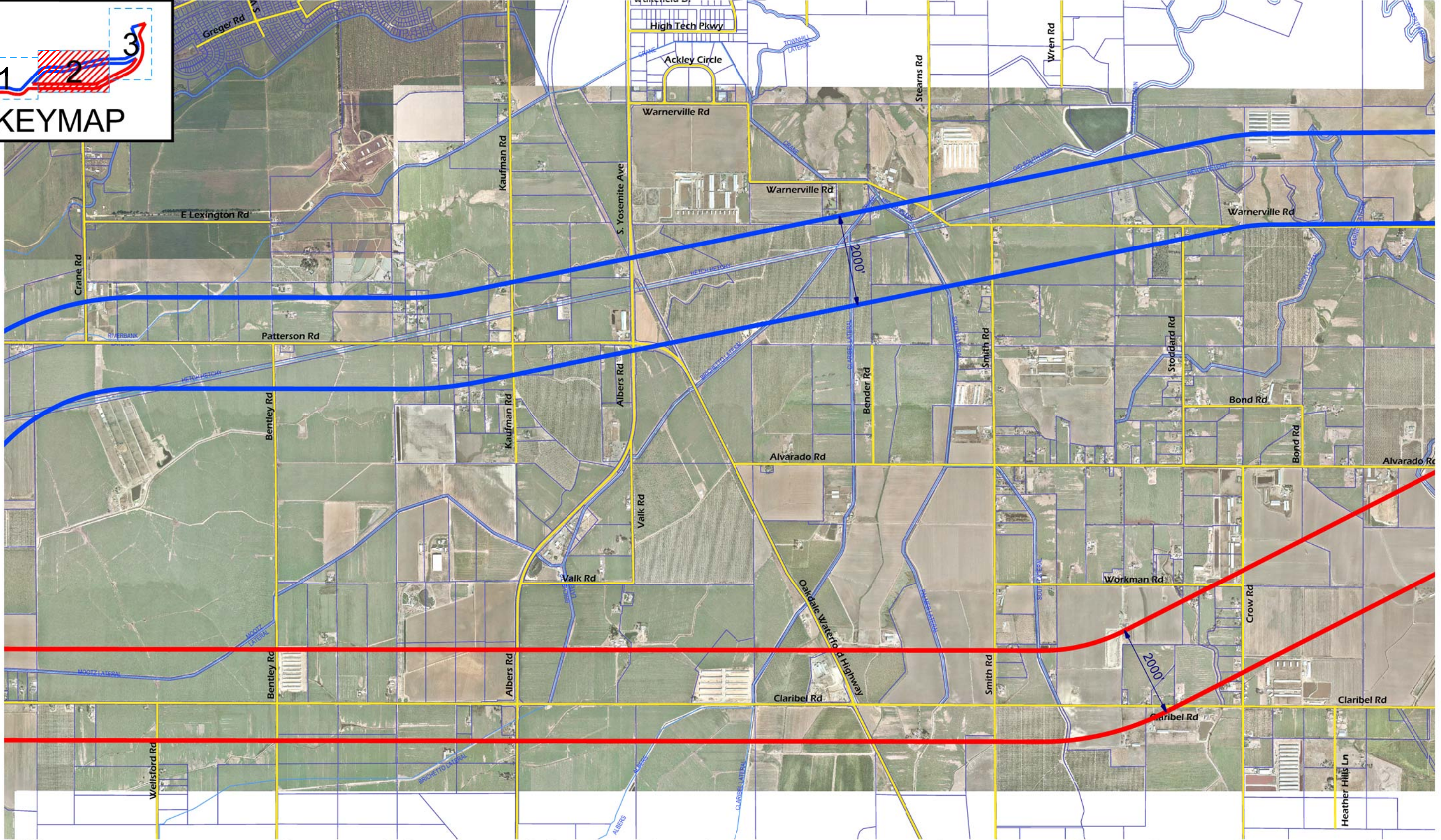
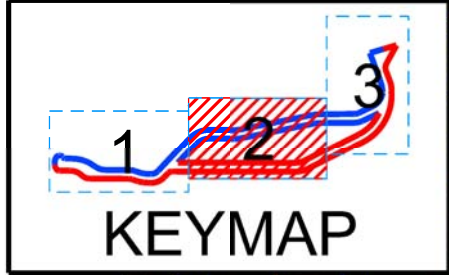
Note: Study corridors A and B are approximately 2,000 feet wide.

# NORTH COUNTY CORRIDOR SR 108 EAST ROUTE ADOPTION Conceptual Corridor Study Area (Draft)



P:\Projects\W\SY\2601\_NCC\0\_CADD\ign\PAED\Exhibits\Exhibit - Revised\Swath - July 1, 2019





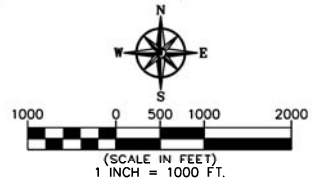
**Legend:**

- New Interregional State Route
- Common Corridor A & B
- Corridor B
- Corridor A

Note: Study corridors A and B are approximately 2,000 feet wide.

# NORTH COUNTY CORRIDOR SR 108 EAST ROUTE ADOPTION

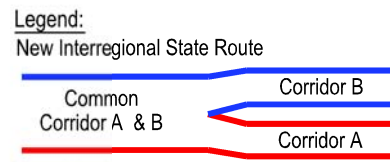
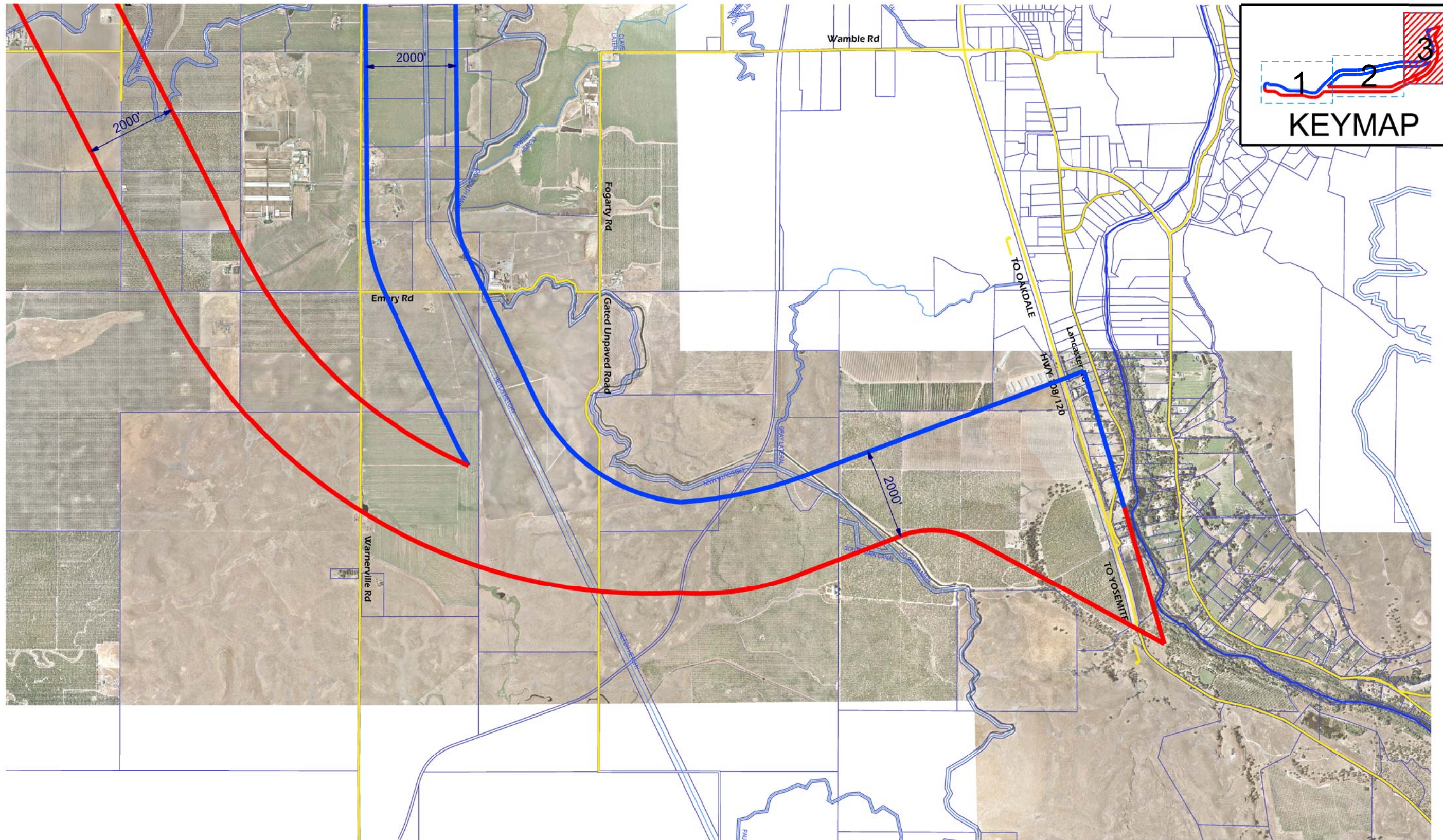
## Conceptual Corridor Study Area (Draft)



P:\Projects\W\W\2601\_NCC00\_CADD\ign\PAED\Exhibits\Exhibit - Revised Swath\ July 1, 2009



P:\Projects\W\SY\2601\_NCC\04\_CADD\ign\PAED\Exhibits\Exhibit - Revised Swath\ July 1, 2009



Note: Study corridors A and B are approximately 2,000 feet wide.

# NORTH COUNTY CORRIDOR SR 108 EAST ROUTE ADOPTION Conceptual Corridor Study Area (Draft)

