

**NORTH COUNTY CORRIDOR
TRANSPORTATION EXPRESSWAY AUTHORITY**

ITEM: 3d

SUBJECT:

Approval of the North County Corridor (SR 99 to SR 120) Final Alternatives to be taken for detailed environmental analysis

STAFF RECOMMENDATIONS:

By motion, approve the alignment alternatives shown in the attached map and direct the Authority Manager to conduct further environmental studies for these alignments.

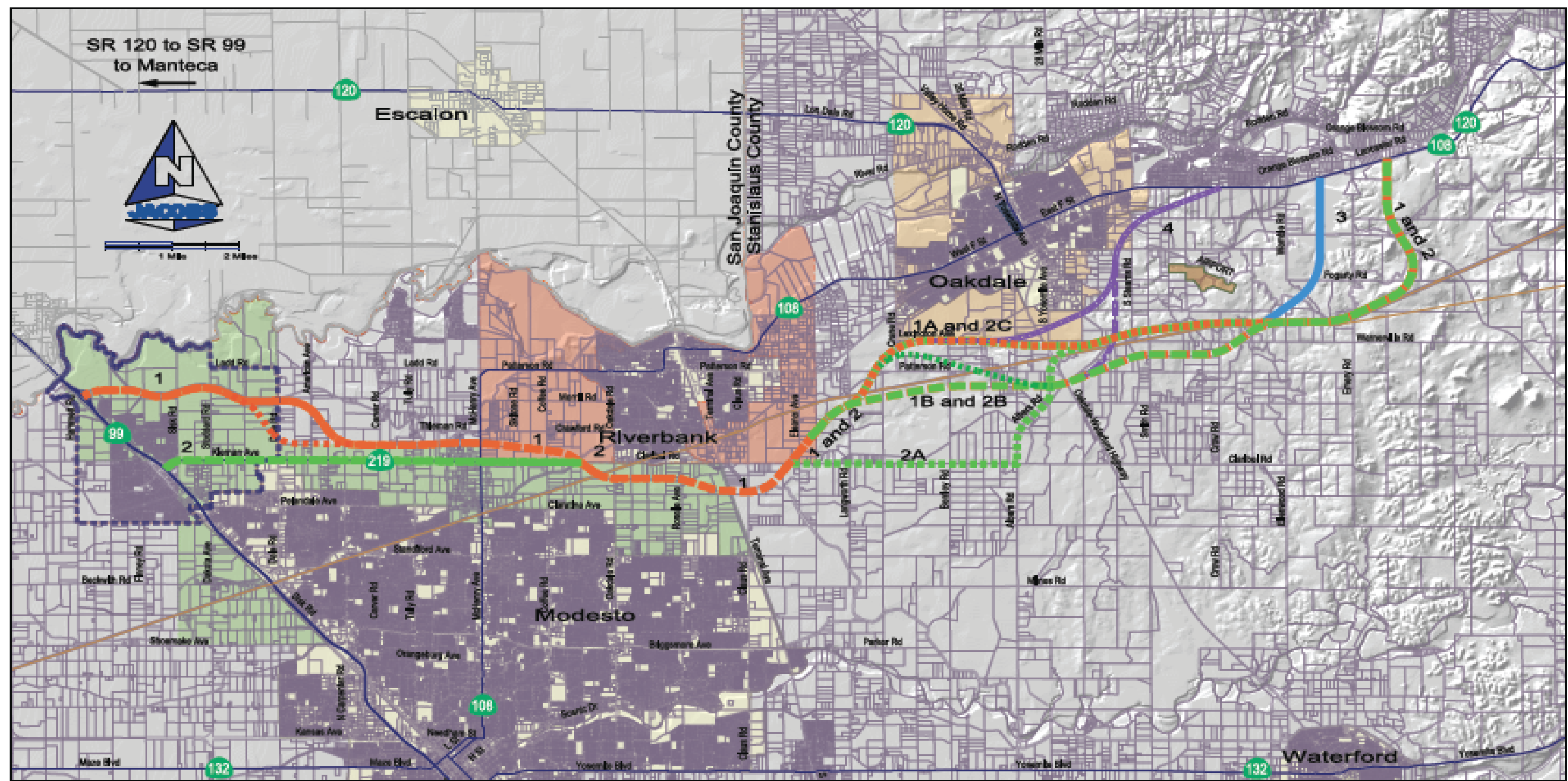
FISCAL IMPACT:

The original scope of the contract assumed evaluating three (3) design alternatives. Due to public input and Caltrans requirements, the team concurred with the study of four (4) alternatives. The impact to budget is being analyzed by the project team and will be presented to the Authority at its next meeting.

DISCUSSION:

The selection of final reasonable range of alternatives for detailed environmental analysis results from the technical screening of the initial alternatives obtained from: 1) the public input at scoping meetings and other public meetings, 2) input from concerned public and private entities, 3) input from local jurisdictions and 4) the Project Development Team (PDT). The PDT developed initial screening criteria and narrowed the 18+ initial alternatives generated from the above sources to about four (4) reasonably distinct alternatives, with various possible design options. This set of alternatives to be studied for the environmental process is attached to this report, and were developed after individual discussions with the Technical Advisory Committee (TAC) members for the NCC. It may be possible for further screening of some of these alternatives, before reaching the point of the release of Draft Environmental Document, once the project team starts technical studies and conducts detailed analysis. It is imperative that the project team receives the Board concurrence on these alternatives before it expends more efforts studying them in detail.

SR 120 to SR 99
to Manteca



- LEGEND:**
- Alternative 1 (Hamlet/SR 99 interchange to North of Kerman to SR 108/120)
 - Alternative 1 (Design Alternative South)
 - Alternative 1A (Lexington)
 - Alternative 1B (South of Patterson)
 - Alternative 2 (Kerman/SR 99 interchange to SR 108/120)
 - Alternative 2A (Claus to Albers)
 - Alternative 2B (Langworth/Eleanor/Ellenwood)
 - Alternative 2C (Lexington)

- Alternative 3 (Wemble)
 - Alternative 4 (Stearns)
- City Limits: Modesto, Oakdale
- Sphere of Influence (SOI)
- Salida Community Plan
- Stearns General Plan Study Area

DRAFT

March 2011

North County Corridor
Initial Alternative Screenings