

**NORTH COUNTY CORRIDOR
TRANSPORTATION EXPRESSWAY AUTHORITY**

ITEM: 3a

SUBJECT:

Concurrence of Alternatives

STAFF RECOMMENDATIONS:

Board concurrence of Project Development Team (PDT) approved alternatives to be brought forward for environmental technical studies

FISCAL IMPACT:

Not determined

DISCUSSION:

Jacob's staff provides the following discussion:

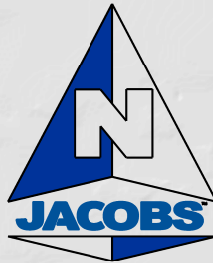
A second level of screening has been conducted and meetings have been held with the member jurisdictions, the PDT, and Caltrans staff to identify and discuss the alternatives that will be addressed in the environmental document. The criteria used included the following:

- Would the alternative meet the Purpose and Need for the project as defined at this stage in the planning process;
- Would there be excessive construction costs associated with the alternative;
- Would the alternative result in severe operations or safety problems;
- Would there be unacceptable adverse social, economic, or environmental impacts;
- Would there be a combination of reasons that taken individually may not be significant but would be cumulatively; and
- Was the alternative previously rejected at an earlier stage, such as a regional planning process and as documented in an environmental process.

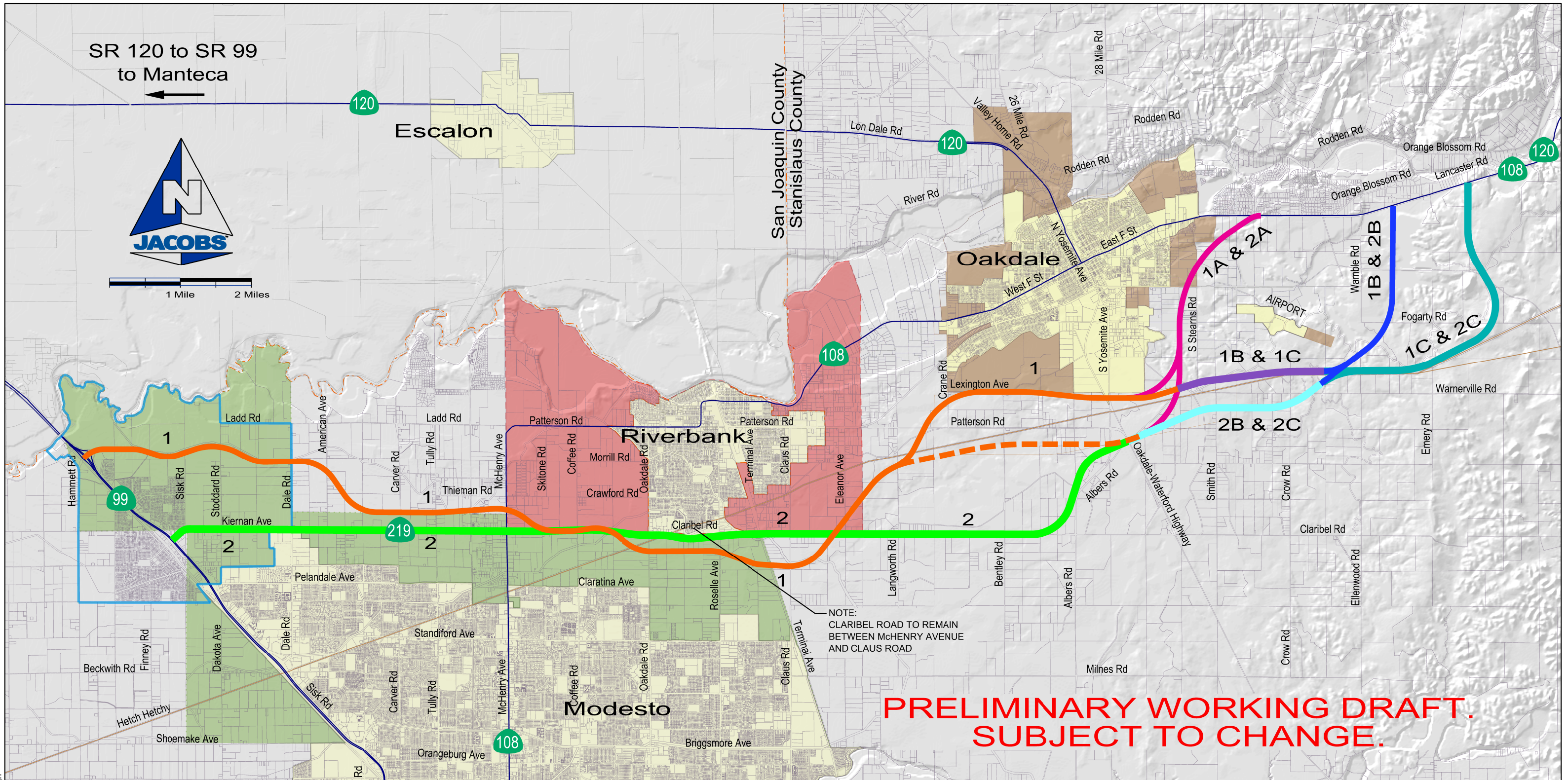
The Technical Advisory Committee was presented with the alternative alignments on April 5, 2011. At the PDT meeting on April 20, 2011, the final alternatives that will move forward for detailed environmental technical studies were approved. These alternatives will be evaluated in the Draft Environmental Document. (Please see attached.) These alternatives will be posted on the Caltrans website shortly.

It should be noted that there is a differentiation between "Alignments" and a "Design Option". Alignments may also have variances in them at later stages, due to engineering, environmental or local agency requests. For example, the Kiernan Alignment (while shown on the roadway) could be slightly north, south, on SR-219 or a combination thereof.

SR 120 to SR 99
to Manteca



1 Mile 2 Miles



NOTE:
CLARIBEL ROAD TO REMAIN
BETWEEN McHENRY AVENUE
AND CLAUS ROAD

**PRELIMINARY WORKING DRAFT.
SUBJECT TO CHANGE.**

LEGEND:

- Alternative 1A, 1B, 1C
- Alternative 1 (Design Option to be Considered)
- Alternative 2A, 2B, 2C

 City Limits	 Sphere of Influence (SOI)	 Salida Community Plan	 Riverbank General Plan Study Area
 Modesto	 Modesto	 Oakdale	

Caltrans is the CEQA and NEPA lead agency for the North County Corridor State Route 99 to State Route 120 Project. Public comments collected at this meeting are not part of the CEQA or NEPA public review process and will not be made a part of the official public record.

April 20, 2011

North County Corridor
Project Alternatives

2011-04-20_Sht_Project_Alt1-2.dgn