

**NORTH COUNTY CORRIDOR
TRANSPORTATION EXPRESSWAY AUTHORITY**

ITEM: 4d

SUBJECT:

Corridor Mapping Overlay with Sphere of Influence Boundaries

STAFF RECOMMENDATIONS:

Information Only

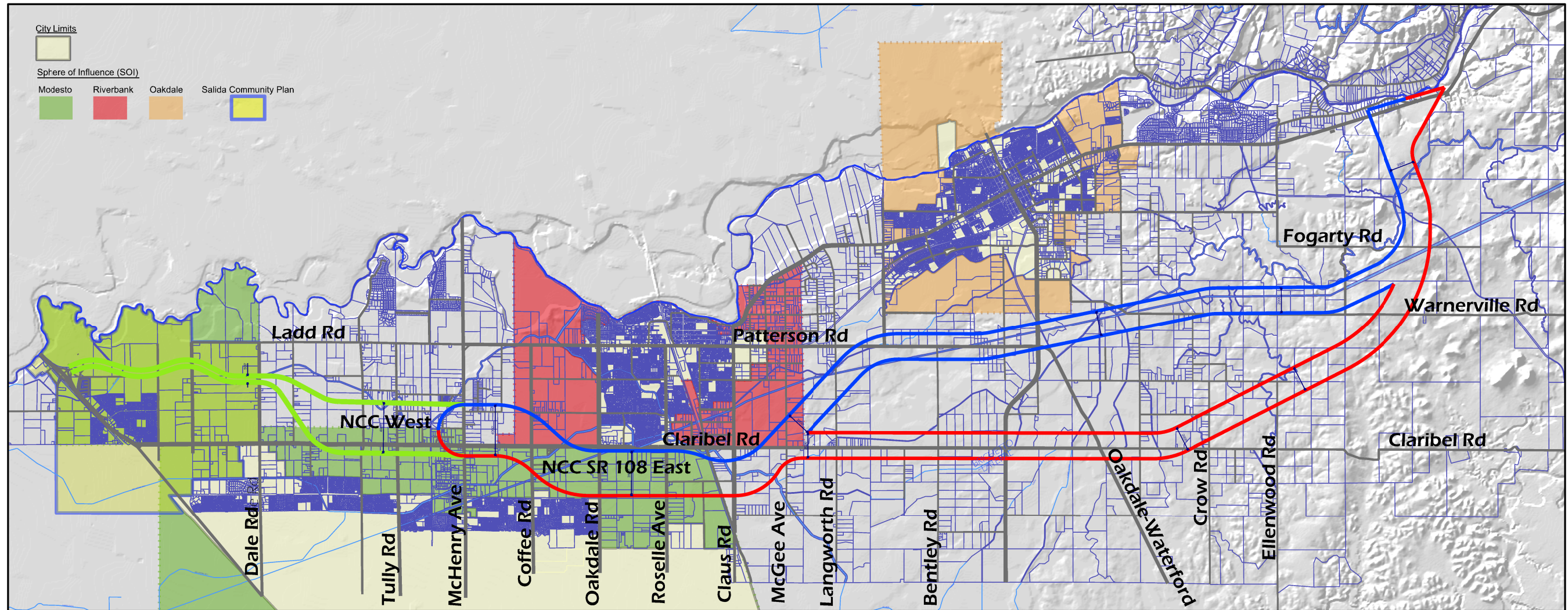
FISCAL IMPACT:

None

DISCUSSION:

A graphic has been developed for informational purposes, that shows the existing proposed corridors overlaid with jurisdictional spheres of influence based upon existing general plans. All traffic analysis is based on the spheres of influence as shown. Currently, the future alignment is in the County, however, this graphic depicts the appropriate future jurisdiction for each roadway segment.

P:\Projects\WSXS2601_NCC\00_CADD\logn\PAED\Exhibits\Exhibit - SOI-Riverbank-Oakdale\NCC_SR108E_SOI_TAC.dgn



NORTH COUNTY CORRIDOR SR 108 EAST ROUTE ADOPTION Conceptual Corridor Study Area (Draft)

Legend:

New Interregional State Route



Note: Study corridors A and B are approximately 2,000 feet wide.

