

**NORTH COUNTY CORRIDOR
TRANSPORTATION EXPRESSWAY AUTHORITY**

ITEM: 5b

SUBJECT:

Revised Study Corridor

STAFF RECOMMENDATIONS:

Information Only

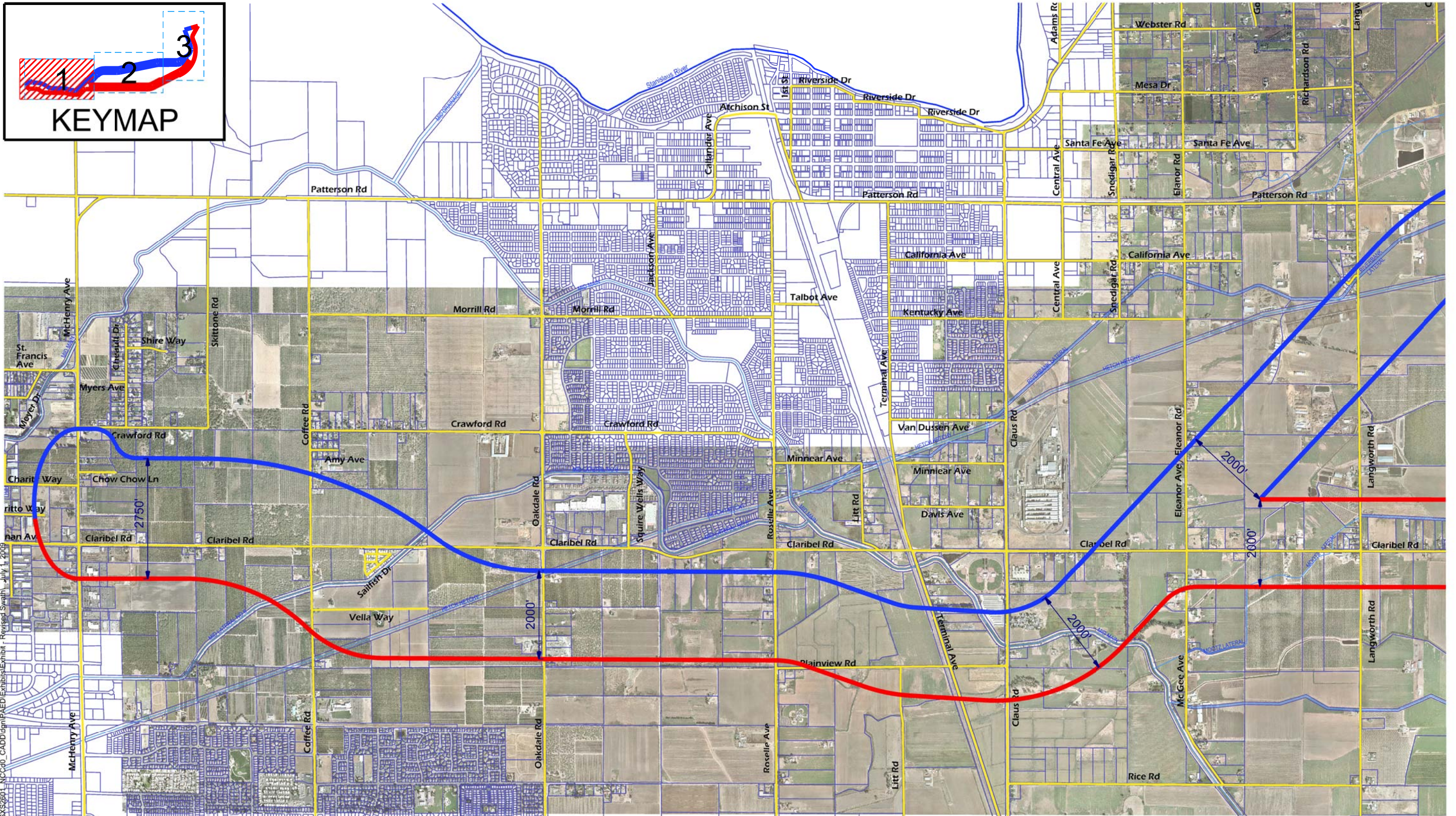
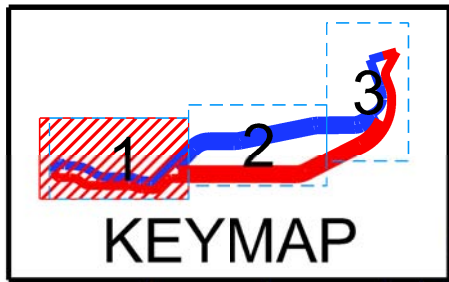
FISCAL IMPACT:

Not determined

DISCUSSION:

The attached mapping depicts the proposed corridor as will be presented in the Draft Environmental Impact Report. Sheet 1 of 3 has been revised as a variation of previously presented corridors. This variation was developed after considerable public comment and the June 15th public scoping meeting. The Project Development Team (PDT) approved the proposed corridor at its July 1, 2009 Monthly Teleconference PDT Meeting. The proposed corridor was approved because it is the least environmentally damaging practicable alternative. It lessens the impact to property owners within the original corridors by narrowing the proposed corridor to between 2,750 feet to 2,000 feet (approximately), except at McHenry Blvd. where the corridor is wider to accommodate future interchange options.

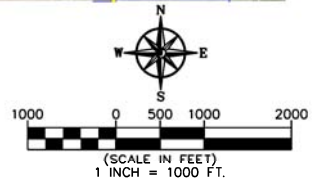
The mapping is posted on the Caltrans Website:
www.dot.ca.gov/dist10/environmental/projects/northcounty



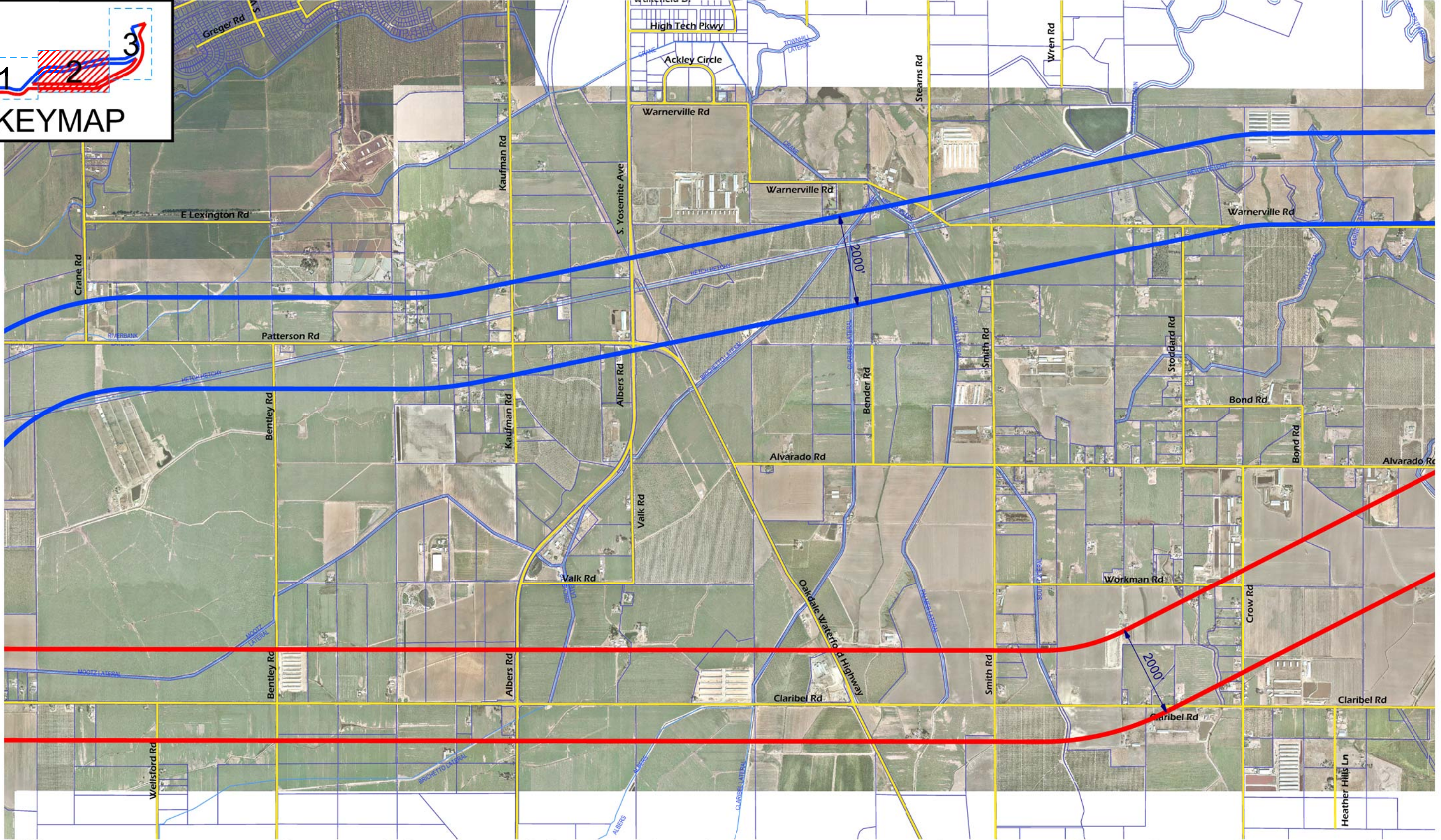
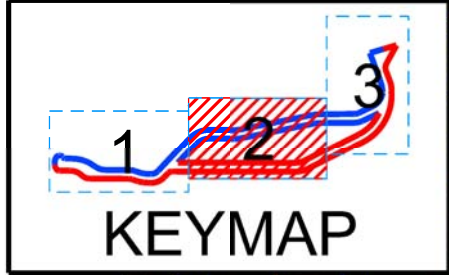
Legend:
 New Interregional State Route
 Common Corridor A & B
 Corridor B
 Corridor A

Note: Study corridors A and B are approximately 2,000 feet wide.

NORTH COUNTY CORRIDOR SR 108 EAST ROUTE ADOPTION Conceptual Corridor Study Area (Draft)



P:\Projects\W\SY\2601_NCC\0_CADD\ign\PAED\Exhibits\Exhibit - Revised Swath - July 1, 2019

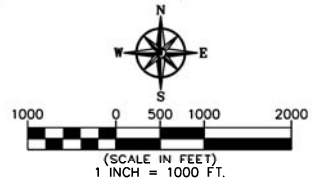


Legend:

- New Interregional State Route
- Common Corridor A & B
- Corridor B
- Corridor A

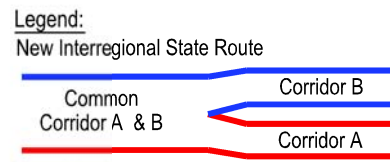
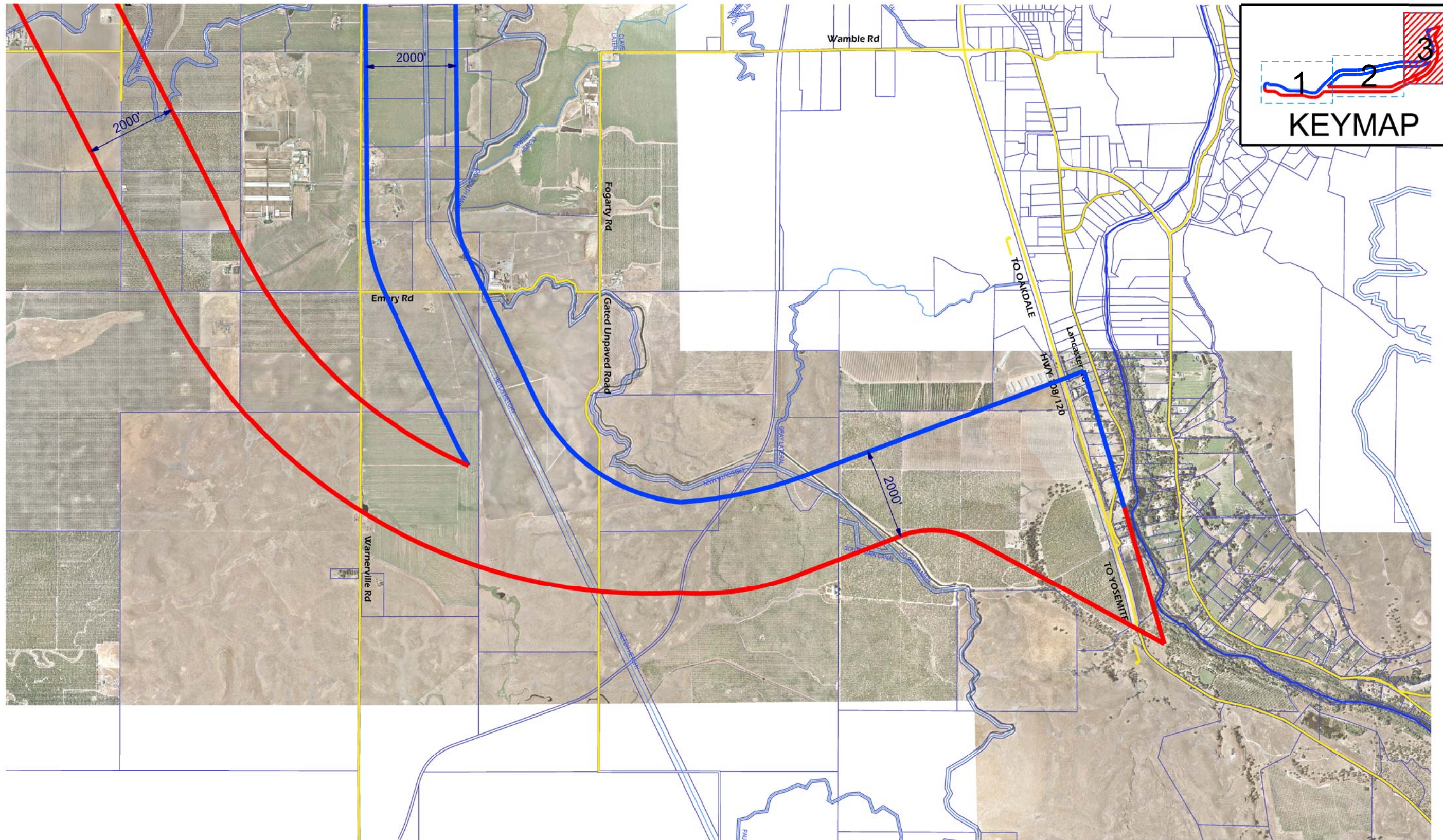
Note: Study corridors A and B are approximately 2,000 feet wide.

NORTH COUNTY CORRIDOR SR 108 EAST ROUTE ADOPTION Conceptual Corridor Study Area (Draft)



P:\Projects\W\W\2601_NCC00_CADD\ign\PAED\Exhibits\Exhibit - Revised Swath\ July 1, 2009

P:\Projects\W\SY\2601_NCC\00_CADD\ign\PAED\Exhibits\Exhibit - Revised Swath\ July 1, 2009



Note: Study corridors A and B are approximately 2,000 feet wide.

NORTH COUNTY CORRIDOR SR 108 EAST ROUTE ADOPTION Conceptual Corridor Study Area (Draft)

