

THE BOARD OF SUPERVISORS OF THE COUNTY OF STANISLAUS
BOARD ACTION SUMMARY

DEPT: Public Works

BOARD AGENDA #: 9:10 AM

AGENDA DATE: April 26, 2016

SUBJECT:

Public Hearing to Consider the Annexation of Parcels into the County Service Area 27-Empire and the Levy of the Annual Assessment; and Conduct an Assessment Ballot Procedure Regarding the Matter

BOARD ACTION AS FOLLOWS:

No. 2016-210

On motion of Supervisor O'Brien, Seconded by Supervisor Withrow
and approved by the following vote.

Ayes: Supervisors: O'Brien, Chiesa, Withrow, DeMartini, and Chairman Monteith

Noes: Supervisors: None

Excused or Absent: Supervisors: None

Abstaining: Supervisor: None

1) Approved as recommended

2) Denied

3) Approved as amended

4) Other:

MOTION:

ATTEST:


ELIZABETH A. KING, Clerk of the Board of Supervisors

File No. CSA-27-6

**THE BOARD OF SUPERVISORS OF THE COUNTY OF STANISLAUS
AGENDA ITEM**

DEPT: Public Works
Urgent Routine

BOARD AGENDA #: 9:10 AM

AGENDA DATE: April 26, 2016

CEO CONCURRENCE:

phx



4/5 Vote Required: Yes No

SUBJECT:

Public Hearing to Consider the Annexation of Parcels into the County Service Area 27-Empire and the Levy of the Annual Assessment; and Conduct an Assessment Ballot Procedure Regarding the Matter

STAFF RECOMMENDATIONS:

1. Find that the notice of the Public Hearing was given pursuant to Government Code Sections 25211.3(b) and 6061 on April 12 and April 19, 2016.
2. Conduct the Public Hearing to receive comments regarding:
 - A. The Annexation of parcels into the County Service Area #27-Empire;
 - B. The proposed method of calculating the amount of the annual assessment; and
 - C. The levy of the annual assessment to pay for the county service area.
3. Authorize the Clerk of the Board to oversee the tabulation of the sealed ballots and determine whether a majority protest against the assessment exists and submit the results to the Board of Supervisors at the May 10, 2016 meeting.
4. Find that the California Constitution Article XIII D, "Proposition 218", requirements for Public Hearing and Assessment Ballot Procedure have been satisfied upon closure of the Public Hearing regarding this matter on April 26, 2016.

DISCUSSION:

In March 2006, the Board of Supervisors authorized the County to enter into a contract with Stantec Consulting Inc. to provide design, surveying and general engineering services to develop plans and specification for the Empire Infrastructure Improvement project. The design process was the first step toward the realization of storm drain infrastructure in Empire and was funded by the Community Development Block Grant (CDBG) Program and the Stanislaus County Redevelopment Agency. On July 21, 2009, the Board adopted the plans and specifications for the Empire Improvement Project Phase 1A and related actions including environmental exemption. On September 15, 2009, a resolution to initiate proceedings to form a County Service Area (CSA) was approved by the Board. On December 8, 2009, the ballot results in support of the formation of the CSA were adopted and CSA 27 – Empire was formed.

Prior to the elimination of the Redevelopment Agency (RDA) in 2011, the plan was to connect the town of Empire to the Modesto Irrigation District outfall near the Santa Fe Bridge that

Public Hearing to Consider the Annexation of Parcels into the County Service Area 27-Empire and the Levy of the Annual Assessment; and Conduct an Assessment Ballot Procedure Regarding the Matter

crosses the Tuolumne River. The cost of the traditional storm drainage system that was contemplated in the Stantec plans would have cost approximately \$15 million.

The Planning and Community Development Department in conjunction with the Department of Public Works developed an alternative storm drainage project because of the funding constraints caused by the elimination of the RDA in 2011. The Empire Community Storm Drainage Report (Report) was the result of that effort.

In an effort to identify a lower-cost option to complete the remaining phases of the project, a feasibility study for a Low Impact Development (LID) swale storm water drainage system was completed. The LID system was presented at a February 17, 2015, community meeting; however, it was not supported by the Empire residents.

Instead, Empire residents favored a targeted storm drain project that would include traffic safety improvements such as sidewalks for safe routes to school for children and general pedestrian use.

A second community meeting was held on March 30, 2015, to obtain input on targeted storm drain solutions and sidewalk locations. Based on the feedback received at the second community meeting, a conceptual plan for a targeted storm drain system that included sidewalks had been developed. The County then held a third community meeting on September 22, 2015, to present the conceptual plan and funding options. The proposed improvements supported were a roundabout at A Street and 3rd Street, sidewalks that will link Empire Elementary School and Glick Middle School along 2nd Street, including at grade railroad improvements and targeted storm drainage solutions where the flooding was reported and needed.

The previously approved Engineer's Report shows the scope and location of the proposed improvements and how they relate to the proposed annexation. Construction of recommended improvements will be contingent upon success of the proposed CSA 27-Empire annexation. Funding for capital improvements will come from CDBG funds, built in phases as funding becomes available.

Anticipated construction phasing and schedule is as follows:

Phase 1	\$1.33 Million	FY 16/17
Phase 2	\$1.33 Million	FY 18/19
Phase 3	\$1.33 Million	FY 20/21

The proposed area to be annexed into the County Service Area is located in the unincorporated town of Empire and encompasses those parcels that will receive special benefit from the recommended improvements. The purpose of this annexation to the CSA is to provide for the ongoing maintenance and operation of the storm drain system and other improvements once the infrastructure has been constructed.

The special benefit assessments to be levied for this district are intended to provide a revenue source for all the maintenance of the service area's storm drain system, sidewalks and

Public Hearing to Consider the Annexation of Parcels into the County Service Area 27-Empire and the Levy of the Annual Assessment; and Conduct an Assessment Ballot Procedure Regarding the Matter

roundabout including but not limited to the materials, equipment, labor, and administrative expenses. These special benefit services may include, but are not limited to, monthly or bi-monthly street sweeping and storm water system maintenance to ensure maximum service life of the system. The annexed parcels will also receive sidewalk maintenance in addition to the services already outlined for the existing parcels in CSA 27.

The annexation of parcels into a County Service Area is a multiple action process with the following proposed timeline:

Board of Supervisors to consider adopting a resolution initiating proceedings for the annexation to County Service Area 27-Empire	March 1, 2016
Board of Supervisors to consider approving the Engineer’s report and to set a public hearing	March 8, 2016
Public Works to send mail-in ballots to affected landowners	March 15, 2016
The Board of Supervisors hold a Public Hearing and conduct ballot count at conclusion of hearing.	April 26, 2016
Board of Supervisors adopts the results of the election	May 10, 2016
Resolution of Application to LAFCO if election is successful	May 13, 2016

This Board item is the fourth step in the process to annex parcels into existing CSA 27, in which we ask the Board to hold a public hearing for this action and direct the Clerk to tabulate the ballots. The first step was accomplished on March 1, 2016, in which the Board authorized staff to initiate proceedings and to develop an Engineer’s Report. The second step was accomplished on March 8, 2016 in which we set the date of the public hearing. The third step was accomplished on March 15, in which the ballots were sent to the affected landowners. During this step, a notice of the public hearing was also published in the Modesto Bee to meet the requirements of the Government Code Sections 25211.3(b) and 6061.

If the annexation of these parcels into the CSA is approved, the first annual assessment for the new parcels is anticipated to be approximately \$84.54 per equivalent benefit unit, which is \$0.85 more than Fiscal Year 2015/2016 for the existing parcels. This assessment would begin when improvements are built.

Information regarding the Empire Improvement Project and the proceedings associated with formation of County Service Areas has been shared with the community through the three public meetings held at Empire Elementary School on February 17, March 30, and September 22, 2015. Such updates will continue as necessary through the construction and formation process to ensure open communication with the community on this infrastructure project.

Upon voter approval of the annexation of the new parcels into the CSA, the ongoing operation and maintenance costs of the service area will be borne by the CSA 27–Empire through assessments estimated to generate approximately \$23,100 annually. These funds will be used for ongoing operating and maintenance for the CSA’s storm water drainage system, sidewalks, and roundabout. The annexation of these parcels to the existing CSA will free businesses, employees, and customers from concerns over storm water runoff, flooding and property damage as well as roadway hazards and restrictions.

Public Hearing to Consider the Annexation of Parcels into the County Service Area 27-Empire and the Levy of the Annual Assessment; and Conduct an Assessment Ballot Procedure Regarding the Matter

POLICY ISSUE:

Government Code Section 25211.3 states that the Board shall hold a public hearing and authorizes the Board of Supervisors to annex the Special Service Area.

FISCAL IMPACT:

The Board of Supervisor's approved the use of Community Development Funds in the amount of \$20,000 on September 9, 2014, for the costs associated with the annexation to CSA 27. Community Development Funds already appropriated will cover staff time for the ballot procedure, Engineer's Report, and public meetings.

BOARD OF SUPERVISORS' PRIORITY:

This action is consistent with the Board's priorities of A Safe Community and A Well-Planned Infrastructure System by building storm drainage and sidewalks for the Empire Community.

STAFFING IMPACT:

Upon approval, the process will be overseen by existing Public Works and Clerk of the Board staff.

CONTACT PERSON:

Matt Machado, Public Works Director

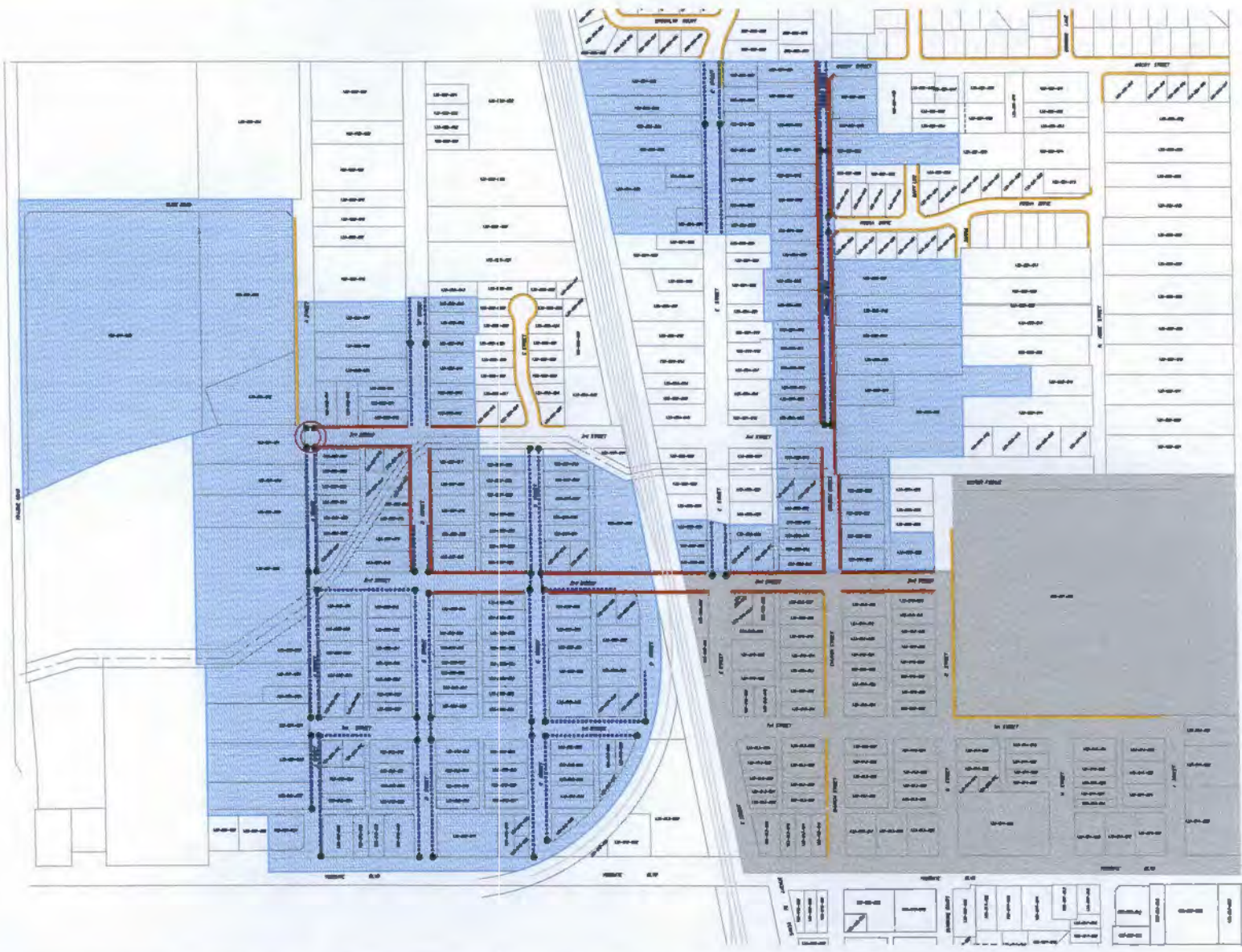
Telephone: (209) 525-4153

ATTACHMENT(S):

- A. Proposed Annexation to County Service Area #27—2016 Exhibit
- B. Notice of Public Hearing Letter

ATTACHMENT A

PROPOSED ANNEXATION TO COUNTY SERVICE AREA #27 – 2016 EXHIBIT



- LEGEND**
-  AREA OF PROPOSED IMPROVEMENTS
 -  EXISTING CSA 27
 -  EXISTING SIDEWALK
 -  PROPOSED SIDEWALK
 -  24" PROPOSED CONCRETE VALLEY GUTTER
 -  DRAIN INLET / CATCH BASIN
 -  1.33-007-009 ASSESSORS PARCEL NUMBER
 -  ROADABOUT

Proposed Annexation to County Service Area #27 -- 2016
 Empire, CA

DR. BY:	C. JOHNSON
PROJECT:	000000
DATE:	01-27-16
SHEET NO:	1 OF 1



ATTACHMENT B
NOTICE OF PUBLIC HEARING LETTER



DEPARTMENT OF PUBLIC WORKS

Matt Machado, PE, LS
Director, County Surveyor

Chris Brady, PE
Deputy Director - Construction/Roads/Bridges

Colt Esenwein, PE
Deputy Director - Engineering/Survey/Fleet

David Leamon, PE
Deputy Director - Development/Traffic

Kathy Johnson
Assistant Director - Finance/GIS/HR/Transit

www.stancounty.com/publicworks

March 8, 2016

SUBJECT: County Service Area 27 Annexation/Empire Improvement Project

Dear Property Owner:

County Service Area (CSA) 27-Empire was formed in December of 2009 as a way to fund the storm drain infrastructure maintenance need in the community of Empire. Prior to the elimination of the Redevelopment Agency (RDA) in 2011, the plan was to connect the town of Empire to the Modesto Irrigation District outfall near the Santa Fe Bridge that crosses the Tuolumne River. The cost of the traditional storm drainage system that was contemplated would have cost approximately \$15 million.

In an effort to identify a lower-cost option to complete the remaining phases of the project, a feasibility study for a Low Impact Development (LID) swale storm water drainage system was completed. The LID system was presented at a February 17, 2015, community meeting; however, it was not supported by the Empire residents. Instead, Empire residents favored a targeted storm drain project that would include traffic safety improvements such as sidewalks for safe routes to school for children and general pedestrian use.

A second community meeting was held on March 30, 2015, to obtain input on targeted storm drain solutions and sidewalk locations. Based on the feedback received at the second community meeting, a conceptual plan for a targeted storm drain system that included sidewalks had been developed. The County then held a third community meeting on September 22, 2015, to present the conceptual plan and funding options. The proposed improvements supported were a roundabout at A Street and 3rd Street, sidewalks that will link Empire Elementary School and Glick Middle School along 2nd Street, including at grade railroad improvements and targeted storm drainage solutions where the flooding was reported and needed.

The Annexation of County Service Area (CSA) No. 27 – Empire is proposed to add 192 parcels in the unincorporated areas of Empire to the existing CSA to provide funding for the ongoing maintenance of the above mentioned improvements. An annual assessment will be levied on each parcel within the Annexation to pay the operation and maintenance costs of the proposed improvements.

Proposition 218, a statewide initiative approved by the voters in November 1996, requires that the property owners within the proposed County Service Area approve the method of calculating the assessments and the levying of an assessment to pay the cost of maintaining the storm drain system. Owning property within the proposed County Service Area gives you the opportunity to support or protest the annexation of the service area. If a majority of the returned Assessment Ballots protests the levying of an annual assessment, CSA No. 27 – Empire will not be annexed. Whether you support or protest the annexation of CSA No. 27 - Empire and the levying of an annual assessment, your vote is important.

This letter is to let you know that within a few days you will be receiving an assessment ballot and other information on this matter. The information will include a Notice of Public Hearing (providing the date, time and location of the public hearing; a detailed description of the method that will be used to calculate the annual assessment; and the Assessment Ballot instructions) and your Assessment Ballot with a return envelope.

If you should have any questions concerning the annexation, please call Sharon Andrews at (209) 525-4181 or David Leamon at (209) 525-4302.

[Para la versión en Español por favor voltée la página](#)



DEPARTMENT OF PUBLIC WORKS

Matt Machado, PE, LS
Director, County Surveyor

Chris Brady, PE
Deputy Director - Construction/Roads/Bridges

Colt Esenwein, PE
Deputy Director - Engineering/Survey/Fleet

David Leamon, PE
Deputy Director - Development/Traffic

Kathy Johnson
Assistant Director - Finance/GIS/HR/Transit

www.stancounty.com/publicworks

8 de marzo de 2016

TEMA/ASUNTO: Anexión del Area de Servicio del Condado # 27
Proyecto de Mejoramientos de Empire

Estimado propietario:

El Area de Servicio del Condado #27 (CSA #27) de Empire fue formada en Diciembre del 2009 como una manera de financiar el mantenimiento de la infraestructura de desagüe en la comunidad de Empire. Previo a la eliminación de la Agencia de Reurbanización (RDA) en el 2011, el plan era conectar el pueblo de Empire al sistema de desagüe del Modesto Irrigation District cerca al puente Santa Fe el cual cruza el Rio Tuolumne. El costo del sistema tradicional de desagüe que fue contemplado hubiera costado aproximadamente 15 millones de dolares.

En un intento de identificar una opción menos costosa para completar las fases restantes del proyecto, se condujo un estudio de viabilidad para un sistema de desagüe de Bajo Impacto Ambiental (LID por sus siglas en ingles). El sistema LID fue presentado en una junta publica el 17 de febrero del 2015; sin embargo no fue apoyada por los residentes de Empire. En su lugar, los residentes de Empire favorecieron un proyecto de desagüe especializado el cual incluyera mejoramientos para seguridad de trafico tal como banquetas para una ruta segura hacia la escuela para los niños y uso general de peatones.

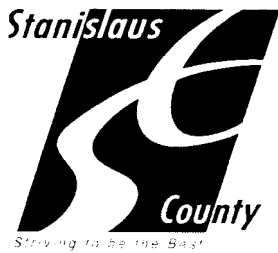
Una segunda junta publica fue llevada acabo el 30 de marzo del 2015 para obtener la opinión de la comunidad de Empire sobre las soluciones especializadas de desagüe y localización de las banquetas. Base a los comentarios recibidos en la segunda junta publica, se formo un plan conceptual para un sistema de desagüe especializado el cual incluye banquetas. El Condado despues llevo acabo una tercera junta publica el 22 de septiembre del 2015 para presentar el plan conceptual y las opciones de financiamiento. Los mejoramientos que fueron apoyados por la comunidad fueron una glorieta sobre las calles A Street y 3rd Street, banquetas que conectan a las escuelas Empire Elementary School y Glick Middle School sobre la calle 2nd Street, incluyendo mejoramientos de nivelamiento en la via del ferrocarril, y soluciones de desagüe en areas donde inundamiento a sido reportado y necesitado.

La anexión del Area de Servicio #27 (CSA #27) – Empire esta siendo propuesta para sumar 192 lotes al area de servicio existente en el area de Empire para proveer fondos para el mantenimiento continuo de los mejoramientos mencionados. Se aplicara un impuesto anual en cada lote dentro del area de anexion para pagar los costos de operación y mantenimiento de los mejoramientos propuestos.

La Proposicion 218 es una iniciativa estatal aprobada por los votantes en 1996 la cual requiere que los propietarios aprueben el metodo de calculación del impuesto propuesto, y la aplicacion del impuesto para pagar los costos de mantenimiento del Sistema de desagüe dentro del area de servicio propuesta. El ser propietario dentro del area de servicio propuesta le da a usted la oportunidad de apoyar o protestar la anexion del area de servicio. Si la mayoría de las boletas de votación que sean retornadas protestan la aplicación del impuesto anual, la area de servicio propuesta CSA #27 no sera anexada. Su voto es importante, sin importar si usted apoya o protesta la anexión del Area de Servicio CSA #27 – Empire y la aplicación de un impuesto anual.

Esta carta es para avisarle que dentro de unos dias usted recibira una boleta de votación para el impuesto que esta siendo propuesto y otra información sobre este asunto. La información incluire una nota de Aviso de Audición Publica (proveyendo la fecha, hora, y localidad de la audicion publica; una descripción detallada del metodo que sera utilizado para calcular el impuesto anual; y instrucciones de la boleta de impuesto) y su Boleta de Impuesto con un sobre para retorno.

Si usted tiene cualquier pregunta sobre la anexión, favor de llamar a Charles Vasquez al (209) 525-4144.



DEPARTMENT OF PUBLIC WORKS

Matt Machado, PE, LS
Director, County Surveyor

Chris Brady, PE
Deputy Director - Construction/Roads/Bridges

Colt Esenwein, PE
Deputy Director - Engineering/Survey/Fleet

David Leamon, PE
Deputy Director - Development/Traffic

Kathy Johnson
Assistant Director - Finance/GIS/HR/Transit

www.stancounty.com/publicworks

Dear Property Owner:

Estimado propietario:

NOTICE IS HEREBY GIVEN THAT on Tuesday, April 26, 2016, at the hour of 9:10 a.m. or as soon thereafter as the matter may be heard, in the Joint Chambers, 1010 10th Street, Basement Level, Modesto, California the Board of Supervisors will hold a public hearing regarding the proposed annexation of the County Service Area 27-Empire and Ballot Procedure.

SE HACE SABER QUE el Martes, 26 de Abril del 2016, a las 9:10 a.m. o tan pronto después de que el asunto pueda ser escuchado, en la Cámara Común localizada en el sótano de 1010 10th Street, Modesto, California, en la Junta de Supervisores, se llevara a cabo una audiencia pública acerca de la anexión propuesta del Área de Servicio del Condado No. 27 – Empire y los procedimientos de la tarjeta de votación.

This letter is to inform you about the annexation of County Service Area 27-Empire. County Service Area 27-Empire is being annexed to provide funding for the extended maintenance and upkeep of the storm drainage system to the unincorporated town of Empire. Additional 192 parcels will receive a special benefit from CSA-27-Empire.

Esta carta es para informarle acerca de la anexión del Área de Servicio del Condado No. 27-Empire. El Área de Servicio del Condado No. 27-Empire está siendo establecida para proporcionar los fondos para el mantenimiento extendido y el mantenimiento del sistema de drenaje pluvial para el área no incorporada de Empire. 192 parcelas adicionales recibirán el beneficio especial del Área de Servicio del Condado No. 27 – Empire.

Proposition 218, approved by the constituents of the State of California in November of 1996, requires the governing jurisdiction to notify all the property owners within the proposed district. This notification is to inform the property owners of the assessments that will be levied to operate the district and the annexation process from this point forward.

La Proposición 218, la cual fue aprobada por los constituyentes del Estado de California en Noviembre del 1996, requiere que la jurisdicción gobernante notifique a todos los propietarios dentro del distrito propuesto. Esta notificación es para informarles a los propietarios acerca de las evaluaciones que van a ser recaudadas para operar el distrito y el proceso de la anexión de este punto en adelante.

The assessment to be levied to provide funding for the upkeep and maintenance of the storm drain system will be distributed equally among property owners within the proposed district's boundaries. The calculation is a total of the estimated operation and maintenance costs for the current year plus administration costs plus operational reserve minus the fund balance from the

previous year minus estimated tax revenue for the current year. The total cost to operate the district is then divided by the number of equivalent benefit units.

La evaluación que va a ser recaudada para proporcionar los fondos para el mantenimiento extendido y el mantenimiento del sistema de drenaje pluvial será distribuida por igual a todos los propietarios dentro de los límites del distrito propuesto. El cálculo es el total de la operación estimada, los costos de mantenimiento para el año corriente, costos de administración y la reserva operacional, menos el saldo de los fondos que el año anterior, menos ingresos fiscales estimados para el año en corriente. El costo total para operar el distrito entonces es dividido por el número de beneficios equivalentes de unidades.

Each parcel may have different assessments levied upon them due to lot size and/or type. This is due to Proposition 218 and its requirement that each parcel pays its proportional benefit within the District. The use of an Equivalent Benefit Unit (E.B.U.) is a value that represents the degree of benefit that each property type receives from the services provided by the County Service Area. This is used because the special benefits vary by property type. Using the formula from above, the total assessment for the proposed district is estimated at \$28,963. This will create an annual assessment per E.B.U of \$84.54. The fiscal year is the twelve-month period commencing on July 1 and ending on June 30 of the following year. The assessment, if the annexation is approved, will be added to the parcel's property tax bill starting July 1, 2016.

Cada parcela tendrá diferentes evaluaciones recaudadas debido al tamaño del lote y/o tipo. Esto es debido a la Proposición 218 y su requerimiento que cada parcela pague su beneficio proporcional dentro del Distrito. El uso de una Unidad de Beneficio Equivalente (E.B.U.) es un valor que representa el grado de beneficio que cada tipo de propiedad recibe de parte de los servicios proveídos por el Área del Servicio del Condado. Esto se usa porque los beneficios especiales varían por tipo de propiedad. Al usar la misma fórmula mencionada anteriormente, la evaluación total para el distrito propuesto es estimada a \$28,963. Esto creará una evaluación anual de \$84.54 por E.B.U. El Año Fiscal es un periodo de doce meses el cual comienza el 1º de Julio y termina el 30 de Junio del próximo año. Si la anexión es aprobada, la evaluación se añadirá al proyecto de ley de impuesto sobre parcelas comenzando el 1º de Julio del 2016.

Once approved, the method would be used to calculate the annual assessment to be levied against your property to pay for the county service area's services. The use of the method would continue indefinitely. The annual assessment for your parcel may increase or decrease from year to year, depending on the amount of money needed to pay for operation and maintenance costs. If the proposed method is not approved, the county service area will not be formed and services will not be provided.

Una vez aprobada, el método será usado para calcular la evaluación anual que será recaudada sobre su propiedad para pagar los servicios del área de servicio del condado. El uso del método continuara indefinidamente. La evaluación anual para su parcela puede aumentar o disminuir de un año a otro, basado en la cantidad de dinero que se necesite para pagar la operación y costos de mantenimiento. Si el método propuesto no es aprobado, el área de servicio del condado no será formado ni los servicios no serán proveídos.

Included with this notification is your parcel's ballot. The ballot contains specific information for your individual parcel. The specific information included is the following: Legal parcel number, and the name of the legal owner(s), type of property or total acres, and the total

weighted value of your vote. Please see the instructions at the conclusion of this document for filling out and returning your ballot.

Su tarjeta de votación para su parcela viene incluida con esta notificación. La tarjeta de votación contiene información específica sobre su parcela individual. La información específica incluye lo siguiente: el número legal de la parcela, nombre(s) del propietario legal, el tipo de propiedad o total de acres, y el valor total sopesado de su votación. Al final de este documento, favor de ver las instrucciones acerca de como completar y entregar su tarjeta de votación.

Proposition 218 also requires a Public Hearing to be set a minimum of 45 days from the mailing date of this letter. The public hearing will be a forum to hear all protests against the proposed assessments and to tabulate the ballots. At the completion of public hearing all the ballots will be tabulated and the existence of a majority protest will result in the assessment not being imposed.

La Proposición 218 también requiere que una audiencia pública sea establecida por lo menos 45 días de la fecha que esta carta es enviada. La audiencia pública será un foro donde se consideraran todas las protestas en contra de las evaluaciones propuestas y para contar las tarjetas de votación. A la conclusión de la audiencia pública todas las tarjetas de votación serán contadas y si la mayoría de votaciones son protestas resultara en que la evaluación no sea impuesta.

The public hearing is set for April 26, 2016 at 9:10 a.m. in the Joint Chambers at the basement level of the County building at 1010 10th Street in Modesto.

La fecha de la audiencia pública está fijada para el 26 de Abril del 2016 a las 9:10 a.m. en la Cámara Común localizada en el sótano del edificio del Condado, en 1010 10th Street, Modesto.

Please contact me at (209) 525-4181 if you have any questions or concerns regarding the proposed service area.

Favor de comunicarse con Charles Vasquez al (209) 525-4144 si tiene alguna pregunta o preocupación con respecto al del Área de Servicio.

Thank you/*Gracias,*

Sharon Andrews,
Accounting Technician

ASSESSMENT BALLOT INSTRUCTIONS
INSTRUCCIONES PARA LA TARJETA DE VOTACION

Use the enclosed Assessment Ballot to express support for or opposition to the proposed annexation of the County Service Area 27-Empire and the use of a method for calculating and levying assessments to pay for district services:

Use la Tarjeta de Votación para expresar su apoyo u oposición acerca de la propuesta anexión del Área de Servicio del Condado No. 27 – Empire y para el uso del método que se propone usar para calcular y recaudar las contribuciones anuales para pagar los servicios del distrito:

HOW TO VOTE YOUR ASSESSMENT BALLOT
COMO VOTAR CON LA TARJETA DE VOTACION:

1. Use a pen to mark an “X” in one of the boxes to indicate either your support or protest, and sign and date the ballot.

Use un bolígrafo y marque “X” en una de casilla solamente para indicar su apoyo u protesta, y firme e indique la fecha en la Tarjeta.

2. Place the ballot in the enclosed self addressed envelope and seal.

Coloque su Tarjeta de Votación en el sobre incluido y séllelo.

3. Deliver the ballot either by mail or in person by:

La Tarjeta de Votación puede ser enviada por correo o entregada personalmente:

- a. **MAIL DELIVERY:** If by mail, mail with the required postage no later than April 15, 2016. Mailing the ballot later than this date creates a risk that the ballot may not be received in time to be counted.

POR CORREO: *Si la envía por correo, usted deberá de cubrir los gastos de envío requeridos y enviarla no más tardar del 15 de Abril del 2016. Si envía su Tarjeta de Votación después de la fecha indicada, corre el riesgo que no sea recibida a tiempo para ser contada.*

- b. **PERSONAL DELIVERY:** If in person, deliver to the Clerk of the Board of Supervisors at any time prior to 9:00 a.m. on Tuesday, April 26, 2016, at 1010 10th St., Sixth Floor, Modesto, California, or at the hearing itself at 9:10 a.m. on April 26, 2016, located in the Joint Chambers in the basement of the County/City Administration Building at the same address listed above.

ENTREGAR PERSONALMENTE: *Si entrega su Tarjeta de Votación personalmente, entréguela al Secretario de la Junta de Supervisores (Clerk of the Board of Supervisors) cualquier día u hora antes de las 9:00 a.m. el Martes, 26 de Abril del 2016, en el edificio Administrativo del Condado y de la Ciudad, 1010 10th Street, Piso 6, Oficina #6700, Modesto, California, o puede entregarla durante la audiencia, a las 9:10 a.m. el 26 de Abril de 2016, en la Cámara de la Junta localizada en el sótano del edificio Administrativo del Condado y Ciudad en la misma dirección ya mencionada.*

Regardless of which method of delivery you use, and in order for your vote to be counted, the assessment ballot must be received prior to the close of the public hearing on Tuesday, April 26, 2016. After an assessment ballot is submitted, it may be changed or withdrawn prior to the conclusion of the public testimony at the hearing on the proposed increase in assessment by presenting identification with a picture to the Clerk of the Board of Supervisors or a County staff member designated at the start of the public hearing. If you mistakenly mark, tear, or deface the Assessment Ballot, write, "spoiled" across the face of the ballot and return it to the Clerk of the Board of Supervisors and another Assessment Ballot will be issued to you.

Cual sea el método que escoja usar para entregar su tarjeta de votación, tenga presente que para que su voto sea contado, es muy importante que se reciba antes de la clausura de la audiencia pública el Martes, 26 de Abril del 2016. Después de entregar la tarjeta, usted podrá modificarla o retirarla con tal de hacerlo antes de concluirse las declaraciones públicas que se darán en la audiencia tocante al aumento contributivo que se propone. Para hacerlo, presente su identificación con foto ante el Secretario de la Junta de Supervisores o a un miembro del personal del Condado (designado al principio de la audiencia pública). Si se equivoca al sellar su Tarjeta, o se rompe o desfigura, escriba la palabra SPOILED (en ingles significa ARRUINADA) sobre la Tarjeta y entréguela al Secretario de la Junta de Supervisores. Se le extenderá otra.