



March 25, 2016

11/27/2015 10:41:10 AM
2016 100-11 A 10-16

Dear Friends,

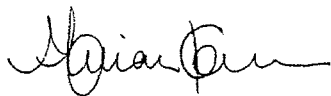
Every day at Stanislaus Community Foundation, we are witness to great changes underway in our region, through new partnerships, collaborative efforts and engaged philanthropy. *We continue to believe that it will take all of us, working collectively and within our respective organizations, to bend the arc of Stanislaus County towards prosperity for all who choose to live, work and play here.*

With this orientation, a core value of Stanislaus Community Foundation is to increase the capacity of individuals and organizations to work across sectors and silos to advance systems-change in education, health and well-being, the arts, the built environment and basic needs. This emerging emphasis drives our work and grantmaking, as you'll note in our 2015 Annual Report, as well as the Stanislaus READS! Progress Report.

The Stanislaus Community Foundation Annual Report showcases our philanthropic mission and our increased focus on civic engagement and leadership development. Along with charitable investments in local nonprofits, we ramped up the capacity of community members to innovate in the social sector, through the second annual Connecting for Good event. We also modeled high-stakes collaboration by launching, with our incredible community partners, the Stanislaus READS! initiative in 2015.

We appreciate your partnership and your support. As always, Stanislaus Community Foundation remains steadfast in our dedication to serve our great region today and well into the future.

In the Spirit of Giving,



Marian Kaanon
President/CEO



Change Agents



It Takes Many Agents, Actions to Advance Change



If we would sum up 2015 in several words, we would gladly say that it was the year of 'change through collaboration.' We witnessed a profound cultural shift through multiple initiatives taking root in our region – with local agencies and residents connecting in meaningful new ways.

For our part, Stanislaus Community Foundation invested in the capacity of local change agents through the second annual Connecting for Good event in April 2015, drawing a sell-out crowd for a full day of learning. Attendees participated in multiple tracks around mindful leadership, networked organizations and systems transformation.

Along with building up the capacity of our community members to embrace collective

impact, Stanislaus Community Foundation modeled collaborative leadership practice through the Stanislaus READS! campaign, which launched in March 2015.

A multi-sector, multi-year approach to improving literacy among young children, Stanislaus READS! marshalled the resources and aligned the efforts of the Stanislaus County Office of Education, the Stanislaus County Libraries, the Stanislaus Children & Families Commission, and five pilot elementary schools.

Early wins included the adoption of a universal kindergarten readiness assessment and the roll-out of the Imagination Library, a free book distribution program for local families. We ended 2015 with the announcement of major funding commitment from the James Irvine Foundation, which will help expand Stanislaus READS! to more pilot schools and leverage local funds.

In an effort to strengthen the other end of the 'cradle to career' pipeline, we began working in earnest with local K-12 systems, CSU Stanislaus and Modesto Junior College to change the college-going culture in Stanislaus County. Funded by a planning grant from the College Futures Foundation, we are working with our partners to explore and develop a local initiative that provides more needs-based scholarships to students so that they have a clear path to prosperity.

Along with our commitment to shared learning and collaborative initiatives, Stanislaus Community Foundation invested in the region through grants and scholarships, investing more than \$1.4 million in charitable dollars locally. Beyond the actual numbers, we worked hard to connect local donors with area nonprofits to generate conversations around emerging community solutions.

2015 was quite the year – a year of meaningful change and movement towards a shared and hopeful vision for Stanislaus County. We strongly believe our community is well on its way towards creating a prosperous, safe and vibrant home for all who live here. We look forward to working with you to lift up our great community in 2016 and beyond.

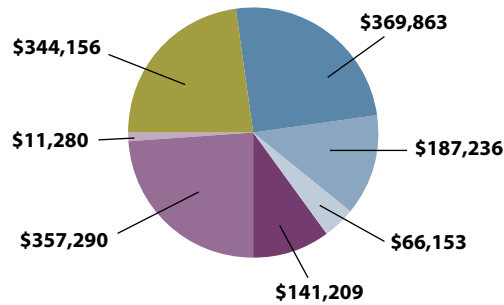
Marian Kaanon
President/Chief Executive Officer

Jeff Grover
Chairman, Board of Directors

What does Stanislaus Community Foundation do?

Stanislaus Community Foundation is a catalyst to transform philanthropic resources into common good. Community Foundations are unique in that they are a place-based public charity created by and for a specific region of people. Stanislaus Community Foundation houses over 100 unique charitable funds under our umbrella, comprising more than \$18 million in total assets. These funds are set up by individuals, families, corporations, public and nonprofit agencies - anyone with a charitable goal can achieve it, easily and efficiently, by utilizing our services. Since 2002, Stanislaus Community Foundation has provided close to \$11 million in grants and scholarships throughout our region.

2015 Giving by Impact Area

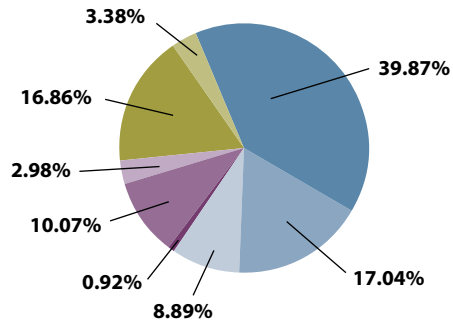


- Academic & Education **25.04%**
- Arts, Culture & History **12.68%**
- Basic Needs **4.48%**
- Children, Youth & Families **9.56%**
- Community Development **24.19%**
- Environmental & Wildlife **0.76%**
- Health & Human Services **23.30%**

OF GRANTS
454

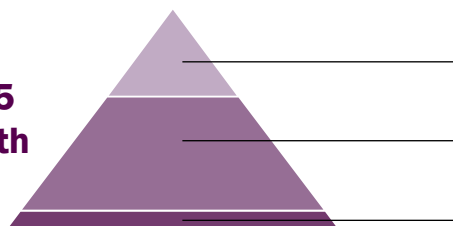
TOTAL GRANTS
\$1,477,187

Funds by Asset Size



- Donor Advised
- Unrestricted
- Field of Interest
- Fund by Asset Size
- Agency Fund
- Operating Fund
- Scholarship Fund
- Designated Fund

2015 Growth



- New Funds **\$910,883**
- Contributions to Existing Funds **\$1,397,874**
- Investment Returns **\$186,009**

2015 Grants and Scholarships

- Advancing Vibrant Communities
- Alliance Education Foundation
- ALS Association Golden West Chapter
- Alzheimer's Association of Santa Cruz County
- American Institute for Cancer Research
- Benedictine College
- Bethany Christian Services
- Bethany Home Foundation
- Burlingame High School Excellence Fund
- Big Brothers Big Sisters of Colorado
- Blessings In A Backpack
- Boy Scouts of America, Greater Yosemite Council
- Boys & Girls Clubs of Stanislaus County
- Boys and Girls Club of Tracy
- Burbank Elementary School
- Cal Poly Athletic Advancement
- Cal Poly Foundation
- Cambridge Academies
- Camp Taylor
- Cardozo Middle School
- Carnegie Arts Center
- Court Appointed Special Advocates (CASA)
- Catholic Charities
- Center for Human Services
- Central West Ballet
- Chemo Crew
- Children's Crisis Center
- Christian Public Servants
- City of Modesto Parks and Recreation
- Comforting Kids
- Community Hospice Foundation
- Congregations Building Community
- CSU Stanislaus Warrior Athletics
- Danielle's Gift
- Dartmouth College
- Del Rio CC Foundation
- Downey Faculty Senate
- Education Foundation of Stanislaus County
- Empire Union School District
- Family Promise of Greater Modesto
- Foods Resource Bank
- Fox Road Elementary School
- Friends of the Children
- Gallo Center for the Arts
- GoodCities
- Great Valley Center
- Great Valley Museum Foundation
- Hart - Ransom Baseball Club
- Haven Women's Center of Stanislaus
- Healthy Aging Association
- Hillsdale College
- Howard Training Center
- Hughson Unified School District
- Immaculate Heart Radio
- Impact a Life International
- Interfaith Ministries
- Jessica's House
- Juline Foundation for Children
- Kit Fox Trolley
- KVIE
- Las Palmas School
- Learning Quest/Stanislaus Literacy Center
- Love Modesto
- Make-A-Wish Foundation
- Memorial Hospital Foundation
- Merced Center for the Performing Arts
- Miracle League of Stanislaus County
- Modesto Band of Stanislaus County
- Modesto Baseball for Youth
- Modesto City Schools
- Modesto Empire Little League
- Modesto Gospel Mission
- Modesto Junior College Foundation
- Modesto Police Canine Association
- Modesto Pregnancy Center
- Modesto Rotary Club Foundation
- Modesto Sound
- Modesto Symphony Orchestra Association
- Modesto-Stanislaus Poetry Center
- National Ag Science Center
- Oakdale Educational Foundation
- Oakdale High School
- Okizu Foundation
- Orville Wright Elementary School
- Parent Resource Center
- Patterson Joint Unified School District
- Pediatric Brain Tumor Foundation
- Pinnacle Forum America
- Prospect Theater
- Richard M. Moon Primary School
- Salida Union School District
- Salvation Army
- Salvation Army Red Shield Center
- Save Mart Cares
- Second Harvest Food Bank of San Joaquin & Stanislaus County
- SEEDS Diocese of Stockton
- Shadowchase Running Club
- Shelter Cove Community Church
- Shelter Outreach Plus
- Sierra Vista Child & Family Services
- Society for Disabilities
- South Modesto Partnerships
- St. Mary's Dining Room
- St. Vincent De Paul Ministry of St. Stanislaus Catholic Church
- Stanislaus County Children and Families Commission
- Stanislaus County Police Activities League
- Stanislaus Library Foundation
- Stanislaus Partners In Education
- Stanislaus Senior Foundation
- Stanislaus Union School District
- State Theatre of Modesto
- Sylvan Elementary School
- Sylvan Union School District
- The First Tee of Central Valley
- The First Tee TriValley
- The Jack and Buena Foundation
- Townsend Opera
- Tuolumne River Trust
- Turlock Bulldogs Aquatic Boosters
- UCSF Benioff Children's Hospital Children's Fund
- Uncle Lonny Presents
- United Samaritans Foundation
- United Way of Stanislaus County
- Valley Recovery Resources
- Viking Athletics
- West Modesto King Kennedy Neighborhood Collaborative
- Without Permission
- Women with Pain Coalition
- Youth for Christ
- Youth With A Mission Modesto

Universities and Colleges for 2015 Scholarship Recipients
90 scholarships totaling \$99,739

- California State University, Los Angeles
- California State University, Fresno
- California State University, Sacramento
- California State University, Sonoma
- California State University, Stanislaus
- Dixie State University
- Merced College
- Modesto Junior College
- Ohio Northern University
- Oklahoma State University Institute of Technology
- San Joaquin Valley College
- San Jose State University
- Santa Clara University
- Southern Oregon University
- UC Berkeley
- UC Davis
- UC Irvine
- UC Merced
- UC Santa Barbara
- UC Santa Cruz
- UC Los Angeles
- University of San Francisco

Change Through Philanthropy

Ambeck Mortgage Scholarship and Donor Advised Funds: Giving Back to Your Home Community

Ambeck Mortgage Associates has provided people the opportunity to make Stanislaus County their home for more than 26 years. As a Modesto native, company President Patty Amador is proud of her home and has found a way to say thank you.

"This is the community that has always been my home and has supported me in my business," Patty said. "I am and will always be grateful for that support and to be in a position to donate funds, improve lives, and give back to this community."

In 2003, Patty established the Ambeck Mortgage Scholarship Fund. Since then, she's awarded more than \$25,000 in scholarships to 36 students attending universities around the country, including Sacramento State, UC Berkeley and UCLA.



Patty Amador with 2013 scholarship recipients

"By providing financial assistance to those who want to further their education we are ultimately enhancing life for all of us," said Patty. "Assisting individuals to obtain higher education not only benefits the individual, but their community as well, by the contributions they make with their chosen careers."

Patty didn't stop there. She expanded her giving in 2004 by establishing the Ambeck Mortgage Donor Advised Fund which allows her to grant funding to many local nonprofit organizations including Community Hospice, Center for Human Services, Haven Women's Center of Stanislaus and the Stanislaus Family Justice Center.

"By having the fund, these grants can remain consistent instead of dependent on the economic cycles that affect the ability of support from one year to the next," said Patty.

Because of her planned and thoughtful giving, the Ambeck Mortgage funds will continue to impact organizations and students in our community for years to come.

Christopher P. Walker Foundation Fund: From Private Foundation to Field of Interest Fund

Even as a baby, Christopher Walker was active and gregarious. His parents affectionately nicknamed him "Cricket" since he was their lucky charm and often kicked his feet like the lively creatures.

He grew up in Modesto with his parents and older sister, attended Central Catholic High School and eventually co-owned a timber company called Sylvan Forests.

One of his passions was interacting with children, especially after his niece and nephew were born. As he got more involved in their lives as a young adult, he realized not all children had loving families and the opportunities he and his family had.

"He recognized that some children, unfortunately, did not have the basic needs for survival like shelter, food and a supporting family," said Jean Lowell, Christopher's mother. "He literally hoped to be able to help in some way – even if his efforts only helped one child."



Christopher "Cricket" Walker with his nephew

Sadly, Christopher didn't get the chance to carry out his goal. His young life was tragically cut short in a car accident in 2001 at the age of 29. To honor his dream to help underprivileged children, Christopher's parents and friends formed a foundation to build and support Cricket's House, a safe haven for abused, neglected and at-risk children.

In 2015, the Christopher P. Walker Foundation board of directors decided to transfer the funds from their private foundation to a field of interest fund with Stanislaus Community Foundation that would grant to organizations that provide services and support to young children at risk of abuse or neglect.

"Being able to continue to help the community, carry on Cricket's legacy, and have this occur by handing over the responsibility of running the fund to a third party has been an ideal solution for the Christopher P. Walker Foundation," Jean said. "We were happy to be able to find a partner that could continue to serve Stanislaus County with a similar mission that the Christopher P. Walker Foundation embraced."

With this field of interest fund, Christopher's family and friends can be assured Stanislaus Community Foundation will identify the local organizations capable of making the greatest impact – and that Christopher and those children he sympathized are never forgotten.

out of the challenges and barriers confronting you each day living in south Modesto. It took character.”

Notorious for high crime and poverty, south Modesto can be a difficult environment for children to grow up – a place where they often end up in gangs or dropping out of school. Evelyn Hanshaw Middle School became a haven of safety and hope for many of them. Evelyn Hanshaw herself became their matriarch.

When Evelyn passed away in 2005, Charles – who is also the executor of her estate – established a scholarship fund with money Evelyn had bequeathed to award to deserving graduates of her namesake school to go to college. Since she had no children of her own, these students were her children and her bequest was, in a way, her college savings account for them.

“The students at Hanshaw Middle School are smart – and not just book smart – street smart,” Charles said. “They have extracted an intelligence from the challenges and circumstances they were born into and, as Mrs. Hanshaw described to me, with a little financial boost can go the distance.”

For the past ten years, that financial boost has added up to more than \$100,000 to 118 students to attend colleges and universities, including Stanislaus State, Modesto Junior College and UC Merced.

The Evelyn Hanshaw Scholarship Fund gives beyond its scholarship dollars. Stanislaus Community Foundation connected Charles to organizations with similar charitable goals, like Center for Human Services and United Way, to build partnerships to support the students.

“Placing candidates in a position to apply and become eligible requires interventions,” Charles explained. “On the other end, once a student has received the scholarship, support systems must be in place to stay the course to their degree.”

As the Evelyn Hanshaw scholars grow in number and experience, Charles asks for one favor in return – to go back to their alma mater as role models for younger generations living in south Modesto and serve as a reminder that resilience can lead to a boundless future.

Kayla Bernardi Bee Positive Foundation Fund: Keeping Memories Alive

Spunk, sass and spirit epitomize Kayla Bernardi.

“She had lots of nicknames,” said Cathie Bernardi, Kayla’s mother. “Busy Bee was one she took on early on in her life because she was very busy.”



Kayla Bernardi

Kayla was Cathie and Joe Bernardi’s oldest child. She was born with Down syndrome, but never let it get in her way. She sang, danced, enjoyed water sports on the lake and graduated from Turlock High School.

“She really fought to overcome her medical challenges to do everything we asked her to do and everything she wanted to do,” said Cathie. “She truly lived.”

In 2014, Kayla was diagnosed with leukemia and passed away in March of 2015 at twenty years old. The Bernardis turned to Stanislaus Community Foundation to establish the Kayla Bernardi Bee Positive Foundation Fund to keep Kayla’s memory alive and support the organizations and causes important to Kayla and their family.

“People who didn’t know her will have an opportunity to see things being done in the community in a positive way,” Cathie said.

On what would’ve been the weekend of Kayla’s 21st birthday, more than 600 Stanislaus County residents participated in the first annual Kayla Bernardi Bee Positive 5K Fun Run to raise money for Kayla’s fund. The Bernardis granted most of the proceeds to Jessica’s House in Turlock, an organization that supports grieving families after losing a loved one.

“That’s something we took advantage of so we feel like we should give back to them and help them continue to offer what they give to the community,” said Cathie.

The Bernardis will continue to explore ways to spread joy, empathy and gratitude around the community as Kayla did with her spirit.

Evelyn Hanshaw Scholarship Fund: A Decade of Empowering Students

If you asked long-time educator Evelyn Hanshaw to describe her ideal student, she probably wouldn’t just pick someone with straight-As and perfect attendance. Resilience, leadership and perseverance mattered most to her, especially at the middle school named after her in south Modesto.



Evelyn Hanshaw and Charles Vidal

“Mrs. Hanshaw was mesmerized by the resilience of the students in her school,” said Evelyn Hanshaw Middle School’s first principal, Charles Vidal. “It took more than a GPA to break

Change Through Community Action



71% of Stanislaus County third grade students do not read at grade-level standards, which is a major predictor of future success. Stanislaus Community Foundation is committed to moving the needle on third grade reading in Stanislaus County and continues to act as a lead backbone organization for Stanislaus READS!, a multi-agency, multi-year effort to help children read at grade-level standards by the end of third grade.

In March 2015, Stanislaus Community Foundation and Stanislaus READS! strategic partners published a report highlighting opportunities around school readiness, chronic absence and summer learning. The campaign began its work by setting goals and strategies for the next five years.

Since the launch, Stanislaus Community Foundation invested in several components of the initiative. Key highlights from 2015 include:



Expanded Imagination Library

Stanislaus Community Foundation invested over \$10,000 in seed funding to expand the Imagination Library—a national program that distributes free books directly to children’s homes every month from birth to age 5.



Targeted Family Engagement

Stanislaus Community Foundation joined forces with Congregations Building Community and the Stanislaus County Library to pilot an innovative family engagement concept at Frantz Nursery in October 2015. Over 150 ag-based employees learned tips on how to incorporate more reading in the home, received free Spanish children’s books, and registered for new library cards.



Invested in Summer Learning

Stanislaus Community Foundation and E. & J. Gallo Winery co-invested \$30,000 into pilot school summer programs to help improve children’s access to learning and enrichment. Each school designed a unique program and tested different strategies over the summer, which included opening school libraries and computer labs, incentivizing student reading over the summer, and engaging families on the importance of early learning and reading to children.

Raised New Funding

Stanislaus Community Foundation received a significant investment in the Stanislaus READS! campaign thanks to a recent \$300,000 grant from The James Irvine Foundation. With new financial support, the work will scale up to additional school districts in 2016.



For more information, visit StanReads.org.



Stanislaus Community Foundation continued to build local knowledge around systems leadership through the second annual Connecting for Good event on April 9, 2015. Nearly 300 public officials, nonprofit and business executives, faith-based leaders and neighborhood champions joined together to learn how to lead change at the individual, organizational, and systemic levels. Keynote speakers included Lenny Mendonca, Director Emeritus of McKinsey & Company, and Kim Meredith, Executive Director of Stanford Center for Philanthropy & Civil Society.



Change Through Leadership

Stanislaus Community Foundation 2016 Board of Directors



Jeff Grover,
Board Chairman
President
Solecon Industrial
Contractors, Inc.



Craig Lewis
Vice-Chair
Commercial Agent
Berkshire Hathaway



Melanie Chiesa
Secretary
Optometrist
Monte Vista Optometry



Jeff Coleman
Treasurer
Principal
Grimbleby Coleman CPAs



Michael Gianelli
Immediate Past Chair
Senior Counsel
Gianelli & Associates



Jeffrey Burda
Senior VP
Wells Fargo Bank



Randy Clark
Principal
TSM Insurance



Lynn Dickerson
CEO
Gallo Center for the Arts



Joe Duran
Senior VP
Self-Help Federal
Credit Union



Judy Sly Herrero
Retired
The Modesto Bee



Bill Jackson
President/CEO
VA Rodden Co.



John Lazar
Broker-Associate
Century 21 M&M Associates



Daryn Kumar
CEO
Memorial Medical Center



Marian Martino
Co-Founder
Martino Graphic Design



Evan Porges
President/Co-Owner,
Prime Shine Car Wash



Chris Tyler
Portfolio Manager/
Equity Research Analyst
Great Gable Partners

Our Funds

Agency

Center for Human Services
Central CA Art Association Fund
Central Valley Foods Resources Bank Fund
Central Valley Professional Exchange Fund
Central West Ballet Fund
Dependency Legal Fund
Education Foundation of Stanislaus County
Great Valley Center Fund
Modesto Band of Stanislaus County Fund
Modesto Firefighters EMS Fund
Modesto Firefighters Training Symposium Fund
Modesto Gateway Rotary Club Foundation Fund
Modesto Lions Club Fund
Modesto Police Historical Society Fund
Modesto Police Memorial Fund
National Ag Science Center
Sierra Vista Child and Family Fund
Sunrise Rotary Foundation Fund
Wellspring Foundation of Stanislaus County Fund

Designated

Donovan & Alberta Bodes Fund
Lloyd S. & Virginia M. Parks Memorial Fund
Lo Conte Fund
Nick Chipponeri Family Fund

Fiscal Sponsorship

Friends of the Empire Community Pool Fund
Friends of the Modesto Dog Park Fund
Friends of Wesson Ranch Fund
George A. Rogers Neighborhood Park Fund
Hughson Sports and Fitness Complex Fund
Imagination Library Turlock - ABC Project Fund
Partners in Paint Fund

Donor Advised

A Book of Dreams Fund
Abigail Colby Floyd Memorial Fund
Ambeck Mortgage Fund
Augusta Fund
Boyett Family Foundation Fund
Boyett Petroleum "B Green Project" Fund
Boyett Petroleum "Make Dreams Real" Fund
Cardoza Family Fund
Carroll Family Fund
Ciara Chiesa's Circle of Hope Fund
Clark Family Fund
Credit Bureau Foundation Fund
Datapath Fund
Eric and Carol Benson Charitable Fund
Evans Family Fund
Florence Caruso Family Fund
Friedman Family Fund
Garton Tractor Family Fund
Gianelli Family Fund
Grover Family Fund
Gulvin Family Fund
John and Diane Bellizzi Fund
Johnny Etchebarne's Nugget Fund
Kayla Bernardi Bee Positive Foundation Fund
Maya Rose Children's Fund
Prime Shine/Porges Family Foundation Fund
Raspo Family Fund
Robert Woolley Fund
Van Overbeek Family Fund

Field of Interest

Christopher P. Walker Foundation Fund
Community Transitional Resources Fund
Gervasoni Family Fund
Greater Modesto Area Churches Fund
John and Cheri Phillips Fund
McClatchy Disadvantaged Youth Endowment Fund
Memorial Hospital Foundation/Recreational Opportunities for Cancer Kids (ROCK) Fund
Robert E. Perry Memorial Fund
Stanislaus Heart Rescue Fund
William T. Turner & Doris L. Turner Fund

Scholarships

Ambeck Mortgage Scholarship
Arthur R. & Corinne K. Shields Scholarship
Beyer High School Athletic Scholarship
Camp Jack Hazard – "Bart Bennett" Scholarship
Camp Jack Hazard – "Robert Babington" Scholarship
Chiton Society Scholarship
Club of Hearts Scholarship
Diane Bava Amador Scholarship
Don Hendricks Memorial Scholarship
Dr. Grant E. and Colleen S. Bare Scholarship
Dr. Larry Cooke Memorial Scholarship
Dr. William C. Parker Memorial Scholarship
Edward T. Taylor Jr. Perpetual Memorial Scholarship
Evelyn Hanshaw Scholarship
The First Tee of Central Valley Scholarship
Gemperle Family Farms Scholarship
George Rogers Scholarship
James McClatchy Scholarship
Jane Wynne Woolley Memorial
Judy Wiegman Scholarship
Latino Business Association Scholarship
Martella Family Scholarship
Mary Grogan Scholarship
Melinda Nielsen Family Scholarship
Modesto Chamber of Commerce Scholarship
Oakdale Riverbank Escalon (AAUW) Scholarship
Pat Maciel Lubeck Scholarship
Ryan Dickerson Scholarship
Sammy Jenkins Math Scholarship
Stanislaus County Workforce Alliance Scholarship
Trinitas Farming Community Scholarship
Trinitas Farming Scholarship
Tuolumne Scholarship
Virginia Azevedo Scholarship
Youngheim Family Scholarship

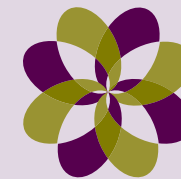
Endowed General

Bette Belle & Jean Smith Memorial Fund
James McClatchy Endowment Fund

You Can Give to a Fund or Establish Your Own

TYPES OF FUNDS:

- **Agency Funds** are either endowed or expendable, and are developed by agencies that see the wisdom of ensuring long-term investment growth in working with Stanislaus Community Foundation.
- **Designated and Field-of-Interest Funds** are more specific and support certain philanthropic interests or are designated to fund specific nonprofit agencies and programs.
- **Donor Advised Funds** are initiated by individuals, families and corporations. These funds are broad in their charitable interest and impact a wide scope of local needs based on the donor's choice of nonprofit organizations.
- **Scholarship Funds** are set up by various donors; including booster clubs, professional groups, families, churches and companies; to invest in local students. The criteria vary for each of our scholarships. Stanislaus Community Foundation manages the online application process and our scholarship committee evaluates applications and selects final recipients per the criteria established by donors.
- **Endowed General Funds** allow Stanislaus Community Foundation to respond to the community's changing needs over time with responsive grant programs developed by our Board of Directors, Grants Committee and staff members.



Stanislaus
Community
Foundation

1029 16th Street | Modesto, CA 95354
www.StanislausCF.org | 209.576.1608

A close-up portrait of a young boy with dark hair, smiling broadly. He is wearing a dark jacket over a plaid shirt. The background is a bright blue sky with soft white clouds.

The Future Begins With Me



Progress Report 2016



About Stanislaus READS!

Stanislaus READS! is a multi-agency, multi-year effort to help children read at grade-level by the end of third grade. This critical milestone is the most important predictor for high school graduation and career success and marks the transition from learning to read to reading to learn.

THE CHALLENGE:

71% of Stanislaus County 3rd grade students do not read at grade level. These students are **4X** less likely to graduate from high school and will only earn **\$20,000** per year on average.

THE FOCUS:

School Readiness



3 Years

The age when a child's vocabulary can predict future 3rd grade reading achievement.

Attendance



83%

of chronically absent students in Kindergarten and 1st grade are unable to read on-level by 3rd grade.

Summer Learning



2 Months

Average reading achievement lost by low-income students over the summer.

OUR GOAL:



To double the number of students in participating pilot schools who read proficiently at the end of 3rd grade by 2020.



OUR APPROACH:

RAISE AWARENESS



ALIGN PARTNERS



ENGAGE FAMILIES



SUPPORT SCHOOLS



TRACK DATA



What a Year!

When Stanislaus READS! launched in March 2015, we took seriously our commitment to partnership. It is in the spirit of partnership that we submit our one-year progress report to you, with a review of our work over the past 12 months, and our goals moving forward.

Over 70% of third graders do not read at grade level in Stanislaus County. This was the call to action for Stanislaus READS! partners, who came together to address this crisis in the making. We underwent a comprehensive learning and planning phase around critical areas that can impact third-grade reading levels: *school readiness, attendance, summer learning, and family engagement.*

In this Progress Report, we reveal new baseline data from our partner schools, provide an update on implementation efforts over the past year, and celebrate the many early wins towards improving grade-level reading in Stanislaus County.



2015 Highlights

- The Imagination Library was implemented in five pilot school attendance zones and now over 300 children receive a free book monthly, mailed directly to their home.
- A universal school readiness assessment was implemented at all Head Start sites across the county and five pilot schools, providing us with a firm grasp on local baseline data for kindergarten readiness.
- Five pilot schools received grants to create or expand their summer learning camps, which drew over 1,000 kids and families to school sites this past summer.
- A community outreach campaign was launched to raise awareness around the importance of attending school every day and reading to young kids.
- Over \$300,000 was raised among local donors and foundations to scale up Stanislaus READS! strategies in the coming years.

Looking ahead to 2016 and 2017, our plans are ambitious. Stanislaus READS! will expand to new schools and districts, ramp up summer learning investments, launch a children's book drive in partnership with the Boy Scouts and scale up Little Free Libraries in local neighborhoods. Our family engagement efforts will extend to employers and the faith-based community: reaching parents where they work and pray. We will continue to build strategic partnerships with key players such as local law enforcement agencies, the Housing Authority, community centers and public health clinics.

As you read this report, we hope that you will be inspired to join Stanislaus READS!. Each of us can play a part in a child's success in Stanislaus County, and all of us will benefit from a vibrant, educated community.





Align Partners

TARGET OUTCOME:



Organizations and systems work in collaboration to maximize resources and sustain impact

“ Large-scale social change comes from better cross-sector coordination rather than from the isolated intervention of individual organizations. ”

—John Kania and Mark Kramer, *Foundation Strategy Group*

Why is Stanislaus READS! Different?

Common Agenda



Stanislaus READS! works across silos with the shared vision to improve third-grade reading levels in Stanislaus County.

Shared Measurement



Stanislaus READS! will track individual student progress over time, which includes indicators on school readiness, chronic absence, summer learning, and reading achievement. Thanks to data-sharing agreements between partner school districts and the Stanislaus County Office of Education, Stanislaus READS! will continue to evaluate program efficacy and adapt strategies to ensure greater impact.

Accountability



The Stanislaus READS! vision around third grade reading is mutually reinforced through coordinated activities by our strategic partners. Examples of this coordination include:

- Stanislaus Community Foundation’s commitment to provide financial support for early literacy efforts and to advocate for additional investments from local and external donors
- Children & Family Commission’s focus on childhood literacy as an ongoing topic for professional development of childcare providers
- Housing Authority’s integration of early third grade reading objectives in afterschool programming
- Health Service Agency’s commitment to promote early literacy through public health clinics
- Stanislaus County Office of Education’s integration of Stanislaus READS! into the high school graduation initiative, Destination Graduation
- Stanislaus County Library’s partnership with Women, Infants, and Children (WIC) to increase family access to library school readiness services at alternative settings

Continuous Communication



Stanislaus READS! provides regular communications with stakeholders through social media, the initiative website, The READ Feed monthly e-Newsletter, and our annual community progress report. We also convene all stakeholders annually to celebrate partnerships, share lessons-learned, and promote best practices to scale up through-out the county.

Backbone Structure



The Stanislaus READS! steering committee acts as the initiative’s backbone organization; is comprised of dedicated representatives from multiple sectors; and meets monthly to maintain vision and focus, provide strategy implementation updates, track progress, review new data, and identify opportunities to grow the movement.

What We Did

GLOBAL VISION



Stanislaus READS! works in partnership with public agencies, community-based organizations, and businesses to amplify key messaging around the importance of kindergarten readiness, regular school attendance, and summer learning.

- 50+ Community Presentations
- Weekly Social Media Blasts
- Monthly e-Newsletter, The READ Feed
- Regular byline articles in local newspapers and magazines
- Designed initiative website, Stanreads.org

PILOT SCHOOL FOCUS



To help improve our learning, Stanislaus READS! partnered with five pilot schools across the county to test strategies, challenge assumptions, and identify best practices that have potential to scale up.



What's Next

SCALE UP

Stanislaus READS! will add 2-3 new pilot schools and districts in the 2016/17 school year.

LEARN & ADAPT

Continue to implement strategies, adapt, and scale-up ideas that work at pilot school sites.

INITIATIVE COORDINATION

Align with the efforts of other initiatives such as SCOE's Destination Graduation and Stanislaus County's Focus on Prevention to ensure efficient collaboration and avoid redundancy.

Pilot School Work

Reading Clubs

Partners with afterschool programs to promote older elementary students reading to pre-school Reading Buddies.

Learning Community for Principals

Track new data, share best practices over time and measure impact.

Imagination Library Expansion

Free books mailed monthly to pre-k children living near pilot school sites.

Targeted Community Outreach

Raise awareness of the importance of early learning through strategic partnerships with businesses, healthcare and faith-based organizations.

Summer Learning Programs

Grants to pilot schools to increase student access to enrichment over summer.



Family Engagement

TARGET OUTCOME:



Parents are empowered to be their children's first teacher

“ There is no set of policies that will replace parents' role in their children's education. Improving family engagement can help turn around our county's achievement problems. ”

—Campaign for Grade-Level Reading



WHY FAMILY ENGAGEMENT MATTERS

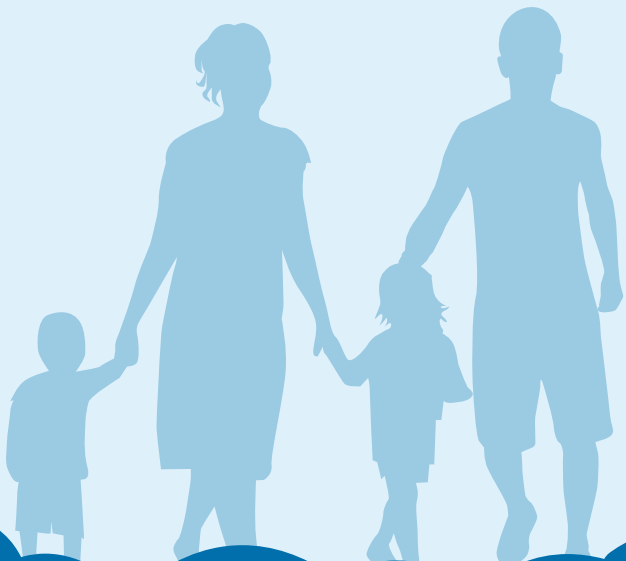
High impact family engagement is a shared responsibility among providers, caregivers, and families in which institutions and organizations commit to working with families in meaningful and culturally respectful ways.¹ Despite the benefits of family engagement, research suggests that not all parents are equally engaged and Latino and black parents encounter more-frequent barriers to engagement than other families do.² Barriers to engagement for Latino and black parents may be *structural* (e.g., lack of time or transportation), *attitudinal* (e.g., perceptions of the value of services), or *cultural* (e.g., mismatch in *cultural* beliefs between practitioners and parents).

Family members who work irregular hours and/or multiple jobs cannot participate in parenting programs that are offered only during their hours of employment. Family participation is often restricted due to scheduling issues rather than lack of interest.



¹ National Association of Family, School, and Community Engagement

² Shannon Moodie and Manica Ramos. *Culture Counts: Engaging Black Child Trends*. October 2014



What We Did



FAMILY ENGAGEMENT ON THE FARM

Frantz Nursery, Congregations Building Community (CBC), Stanislaus County Library and Stanislaus

Community Foundation joined forces in October 2015 to promote early literacy in the field. Olga Cardenas from the Stanislaus County Library and Homero Mejia from CBC presented to 150 Frantz Nursery employees on the importance of reading to children and offered tips for how to incorporate more reading in the home. Stanislaus Community Foundation provided free Spanish children's books and employees registered for new library cards.



Frantz Nursery staff also created a 'tiny library' in the main office to ensure that employees have regular access to children's books on site. This type of cross-sector coordination is exactly what Stanislaus READS! is all about. Thank you, Frantz Nursery, for showing us how businesses can play such a powerful role in early learning!

THE POP-UP LIBRARY

The Stanislaus County Library received grant funding through the federal Library Services and Technology Act in July 2015 to open a "pop-up" library at The Women, Infants, and Children (WIC) branch on Hackett Road. Library staff visited the site weekly to sign-up WIC customers for library cards, check out books, and teach parents about the importance of reading to children by modeling read aloud behavior. More than 130 parents and children now have library cards and checked out over 800 books at the "pop-up" library. Even better, these families have gone on to use their library cards to check out over 300 books from library branches throughout Stanislaus County.



What's Next

FAMILY ENGAGEMENT IN ALTERNATIVE SETTINGS

In 2016, Stanislaus Community Foundation is investing in strategies by the Stanislaus County Library to engage families where they live, such as neighborhood parks, houses of worship, and places of employment. The goal of this partnership is to support literacy-building activities for families that reside near pilot elementary schools.



TEXT MESSAGING PROGRAM EXPANDS TO STANISLAUS



Stanford researchers have created a promising new text-messaging program that is designed to support parents in their efforts to teach their children their ABCs and prepare them for kindergarten. The program, called READING 4K!, sends weekly cell phone texts to parents of preschoolers to give them bite-sized tips and easy, specific actions related to developing early literacy skills. Thanks to new partnership with Stanford, Ready4K is now available in English and Spanish for FREE in Stanislaus County and over 200 families in Head Start, the Housing Authority, and pilot schools are already signed up!

School Readiness

TARGET OUTCOME:



Children enter Kindergarten with the knowledge and skills necessary for successful participation in school

“ The logic is quite clear from an economics standpoint. We can invest early to close disparities and prevent achievement gaps, or we can pay to remediate disparities when they are harder and more expensive to close. Investing early allows us to shape the future; investing later chains us to fixing the missed opportunities of the past. ”

—James Heckman, Nobel Prize Winning Economist

WHY SCHOOL READINESS MATTERS

Just as there is an achievement gap in reading performance, there is a school readiness gap that separates disadvantaged children from their more affluent peers. Literacy gaps emerge well before children enter kindergarten and by age 2, children living in high poverty communities are already six months behind their affluent peers in vocabulary development.



What We Did:

Track Data



Stanislaus READS! integrated Ready4School (formally known as Kindergarten Student Entrance Profile) as a universal school readiness tool to measure children’s academic and social-emotional development. Children who score ‘Ready to Go’ in kindergarten are more likely to read at grade level by the end of third grade.

In Spring 2015, Head Start teachers assessed over 1,000 children heading to Kindergarten and Stanislaus READS! pilot elementary schools assessed all Transitional Kindergarten students at the end of the academic year. In Fall 2015, pilot elementary schools then assessed all Kindergarten students within the first six weeks of school. The results of this initial work provides a much clearer road map for Stanislaus County’s journey to school readiness and third-grade reading outcomes.

THE FACTS

70%

of **all** kindergarten children enrolled at pilot schools **are not** ‘Ready to Go’

1.5
TIMES

Children who attended Head Start and Transitional Kindergarten were nearly 1.5 times more likely to be Ready to Go in Kindergarten than those who didn’t.



IMAGINATION LIBRARY GROWING QUICKLY

The Imagination Library is a national program created by Dolly Parton to distribute free books directly to children's homes every month from birth to age 5. In 2015, Stanislaus Community Foundation invested seed funding to expand the program to five new zip codes in Stanislaus County. Thanks to additional financial support from community businesses and service clubs, nearly 400 pre-K children who reside near Stanislaus READS! pilot schools now receive books by mail monthly. In 2016, Imagination Library Champions will continue to work with schools to increase program enrollment with the intended goal to enroll 750 children by the end of the year.

IT'S RAINING BOOKS!



First Book, a non-profit that connects publisher over-runs with low-income communities, provided brand new books through a "big" buy: \$1 per book with a

minimum order of 25,000. Through the generosity of the Education Foundation of Stanislaus County and the Stanislaus Community Foundation, coupled with funds set aside by the Stanislaus County Office of Education, the purchase happened. Students at the Patterson High School Logistics program received the 30 pallets and repackaged the books into kits for distribution to Stanislaus READS! partners.



Stanislaus READS! early learning posters in English and Spanish are now in all Stanislaus County Health Clinics, Stanislaus County Libraries, Head Start sites, and many childcare settings.



In August of 2015, the Children and Families Commission partners with the Stanislaus County Office of Education to sponsor the Learn 2 Read: Read 2 Learn early education conference where presenters shared literary strategies and resources to over 200 childcare providers and educations.

What's Next

LITTLE FREE LIBRARY EXPANSION

The Stanislaus Community Foundation provided funds through a grant to the Stanislaus Military Academy's Building Trades class to construct 34 Little Free Libraries. These lending libraries will soon be found in pilot schools' neighborhoods, public health clinics, and family resource centers to help increase family access to books and also raise awareness on the importance of literacy.

READING CLUBS

Participating pilot schools launched After School Program Reading Clubs to elicit the assistance of older students (4th – 8th graders) to read to their younger, pre-school aged siblings, relatives and neighbors. Each program was provided with a mobile library of books appropriate for children from birth to age five (First Book purchase!), reading logs and training for the Club participants. To create the mobile library, the Friends of the Library categorized the books, and the Community-Based Instruction Class at the John F. Kennedy School prepped the books with library pockets, library check out cards and a color-coded marker on the spines of the books to signal appropriate choices for students to check out.

CHILDREN'S BOOK DRIVE

To help get books into the hands of local children and families, the Boy Scouts of America Greater Yosemite Council is partnering with Stanislaus READS! to help organize a county-wide Children's Book Drive. Modeled after Scouting for Food, local troops will work with residents and businesses to collect children's books prior to the Love Modesto event on April 23, 2016. Stanislaus READS! will distribute books to strategic partners, health clinics, family resource centers, and schools. The Boy Scouts' 2016 goal: 10,000 children's books!

Attendance

TARGET OUTCOME:



Schools and parents strive to reduce chronic absence in the Head Start through 3rd grade so that students receive sufficient instructional time and support to read at grade level or above.

“Elementary school truancy has sweeping implications for our state’s economy and public safety. When our youngest students are missing more than 10% of the school year, we know that they often fall behind and never catch up. We must do more to keep our children in school.”

—California Attorney General Kamala Harris



WHY ATTENDANCE MATTERS

Chronic absenteeism, defined as missing at least 10 percent of school days in a single school year for any reason is a primary driver of low academic achievement and a significant predictor of which students will eventually drop out. Chronic absenteeism is especially prevalent among students who already face significant education challenges: low-income students, students of color, and those with disabilities.



of students chronically absent in their early school years are unable to read on-level by 3rd grade.

What We Did:

Track Data



Among Stanislaus READS! pilot schools, the rate of chronic absenteeism is now tracked in addition to the traditional average daily attendance (ADA). ADA rates of 90% and higher suggest high student attendance overall,

but many mask significant rates of chronic absenteeism.

CHRONIC ABSENCE

Baseline attendance data from 2014-15 revealed staggering information for the pilot schools.

18%

of kindergarteners in the pilots schools (or 104 young children) were chronically absent. These days equate to a month or more of school.

The building blocks of reading are a critical part of kindergarten, and lost time in school means lost reading instruction. The good news is that attendance improves from first through third grades.

EARLY OUTS

Many of the pilot schools report that in addition to absence and tardiness, “early outs” are also an issue. Parents remove their children from school before the end of the day for a variety of reasons, and this too equates to lost instruction. Moon Elementary School recently implemented a new attendance software system that will measure early outs for the first time. This data collection will shed critical light on an attendance issue not usually on the forefront of discussions with families.

Raise Awareness

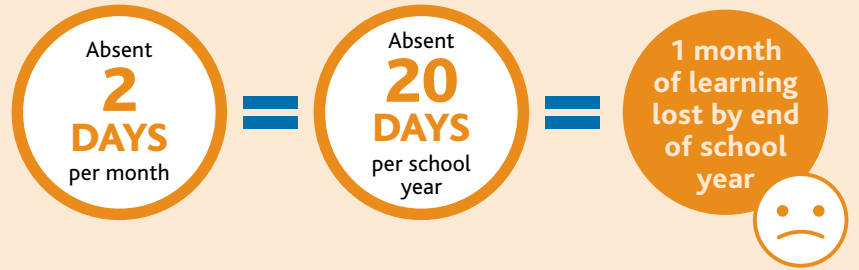


Stanislaus County Office of Education designed posters and banners to promote the importance of attendance in the early years when children are learning how to read. These posters are available to all county schools.



Key Messages for Parents

All parents care about their children's success in life. But they often do not realize how quickly absences can add up to academic trouble. Many parents don't see absences as a problem if they are excused or if they are not on consecutive days. Parents need to understand why attendance is important.



Children who miss 1 month of school per year...

Will be four months behind their peers by the end of third grade

AND

Will be half a year behind in school by the end of fifth grade



What's Next



USE DATA EFFECTIVELY

SCOE's technology team is designing a secure data portal to help track individual student attendance data over time. Pilot schools will be able to monitor students that are chronically absent and use data to trigger intervention throughout the academic year.



ENGAGE FAMILIES EARLY

While it is important to send a message all year that attendance matters, the start of the school year is crucial because that is when schools and communities lay out expectations for the coming year and begin to develop a culture of attendance. Pilot schools will test new strategies to alert parents to their child's accumulated absences, such as having teachers mail personalized post cards to parents as soon as a child misses two days during the academic year.

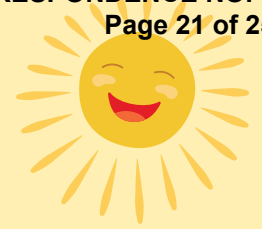


ENLIST COMMUNITY PARTNERS

Stanislaus READS! will continue to forge partnerships with public agencies, health care providers, and community-based organization to raise awareness about the issue of chronic absence and to help address systemic barriers to school attendance.

Source: Alan Ginsburg, Phyllis Jordan, & Hedy Chang, *Absences Add Up: How School Attendance Influences Student Success* (Sept. 2014).

Summer Learning



TARGET OUTCOME:



Children have greater access to quality summer learning and enrichment opportunities

WHY SUMMER MATTERS

Research shows students can lose one to three months of learning over the summer and that kids in lower-income families are disproportionately affected by such academic losses. Unlike their peers from higher-income families, children in low-income families often lack access to enrichment activities—whether through camps, libraries or even museums—that keep their minds engaged over the summer. As a result, they miss crucial learning opportunities that build on what they’ve learned during the school year.

Summer learning programs can help mitigate summer learning loss and even lead to achievement gains that have lasting effects—enduring for at least two years after program completion.



What We Did:

INVESTED IN SUMMER

In Summer 2015, Stanislaus Community Foundation and E & J Gallo Winery co-invested in programs at five pilot schools to help improve children’s access to learning and enrichment over the summer. Each school designed a unique program and tested different strategies, which included opening school libraries and computer labs, incentivizing student reading over the summer, and engaging families on the importance of early learning and reading to children. Over 1,000 children participated in the summer programs, over 50 parents enrolled in the parent literacy classes, and schools reported new partnerships with Stanislaus County Library, Central West Ballet, and Great Valley Museum to help with summer offerings.



SUMMER READING CHALLENGE

The Stanislaus County Library continues to play a critical role in the reduction of summer learning loss for local youth. Thanks to generous support from the Stanislaus Library Foundation and Friends of the Library chapters, children and teen participants read for over 20,000 hours last summer, and participation was up at every one of the county’s 13 library branches. Children won prizes, participated in Science, Technology, Engineering, and Mathematics (STEM)-based activities, and watched magicians and other performers. Even more exciting, two Stanislaus READS! pilot schools participated in the Library’s Summer Reading Challenge and Moon Primary students not only received prizes from their local library in Waterford, but they also received Super Summer Reader shirts and public recognition from their Principal, Steve Kuykendall.³



³ "Beating "Summer Slide" with Super Summer Readers!" *Waterford News* 13 October 2015: 1. Print.

What's Next



ADVANCE SUMMER PROGRAMS



The Modesto Bee and Stanislaus Community Foundation have joined forces on the new *Bee a Reader* campaign, an annual project to ensure Stanislaus County children

have access to educational and enrichment activities during the summer months. Over the month of March 2016, The Modesto Bee will feature stories about summer programs at Stanislaus READS! pilot schools and solicit readers to support programs with individual donations. Stanislaus Community Foundation will manage contributions to *Bee a Reader* and will provide \$60,000 in matching dollars to increase local investments toward the summer fund. To help build best practices for quality summer programs, each school will measure impact and report back to The Modesto Bee at the end of the summer.



LIBRARY TO IMPROVE ACCESS

In 2016, the Stanislaus County Library will expand the Summer Reading Challenge by making it available online to help eliminate transportation barriers for local children. With this improved access, the Library expects that children will achieve the goal of reading 40,000 hours this summer.

How You Can Make a Difference...



Become a Strategic Partner

To ensure that Stanislaus READS! continues to gain momentum, we are looking for additional strategic partners to bolster implementation strategies.

Read *With* Your Child

When you read together, you can help with tough words and ask questions that engage your child in the experience of reading a book. Ask about illustrations and discuss the story. Remember: there's no right or wrong answer. It's about encouraging your child to think about what she or he is reading.

Support the Imagination Library

For only \$30 per year, you can help a child learn to love reading. For \$2.50/month, a child will receive a free book every month from birth to age five.

Raise Awareness

Help us spread the word on the importance of third-grade reading and our strategies around school readiness, attendance, summer learning, and parent engagement.

Invest in Summer Programs

Make a donation to The Bee a Reader fund, a partnership between The Modesto Bee and Stanislaus Community Foundation to raise awareness and increase community support for free summer camps at pilot schools in Stanislaus County.

Align Efforts

How does your work already align with the Stanislaus READS!? Let us know what you are doing so that we can improve our coordination of efforts.

DONATE

Make a donation to support Stanislaus READS! programs by visiting www.stanreads.org/donate or make checks payable to Stanislaus Community Foundation and mail to:

Stanislaus Community Foundation
1029 16th Street
Modesto, CA 95354

To join Stanislaus READS! and track our efforts, visit us online at www.StanReads.org, or call 209.576.1608.

Thank You to Our Partners

STANISLAUS READS! BACKBONE ORGANIZATIONS

Stanislaus Children & Families Commission
Stanislaus Community Foundation
Stanislaus County Office of Education

PILOT SCHOOLS

Burbank Elementary School—Modesto City Schools District
California Avenue Elementary School—Riverbank Unified School District
Josephine Chrysler Elementary School—Stanislaus Union School District
Las Palmas Elementary School—Patterson Unified School District
Richard M. Moon Primary School—Waterford Unified School District
Sylvan Elementary School—Sylvan Unified School District



STRATEGIC PARTNERS

Boy Scouts of America, Greater Yosemite Chapter
Congregations Building Community
Doctors Medical Center
E. & J. Gallo Winery
Education Foundation of Stanislaus
Express Employment Professionals
Frantz Nursery
Friends of the Modesto Library
Great Valley Academy Charter School
James Irvine Foundation
Love Our Cities
The Modesto Bee
Modesto Rotary Club
Morgan Stanley

North Modesto Kiwanis
Pacific Southwest Container
Patterson Rotary Club
Patterson Supply Chain & Logistics Training Center
Stanislaus County Health Services Agency
Stanislaus County Housing Authority
Stanislaus County Library
Stanislaus Health Foundation
Stanislaus Library Foundation
Stanislaus Military Academy
Stanislaus Surgical Center
Walmart Foundation
Waterford Lions Club

