

THE BOARD OF SUPERVISORS OF THE COUNTY OF STANISLAUS  
ACTION AGENDA SUMMARY

DEPT: Chief Executive Office

BOARD AGENDA # B-9

Urgent

Routine

AGENDA DATE September 22, 2015

CEO Concurs with Recommendation YES  NO   
(Information Attached)

4/5 Vote Required YES  NO

SUBJECT:

Approval of the Stanislaus County Board of Supervisors Effective Partnership Recognition for the Department of Child Support Services Pathways to Self Sufficiency Program in Partnership with Alliance Worknet and the Center for Human Services, and the Community Services Agency Pathways to Well-Being Program in Partnership with Behavioral Health and Recovery Services

STAFF RECOMMENDATIONS:

Approve the Annual Stanislaus County Board of Supervisors Effective Partnership Recognition for:

1. Department of Child Support Services - Pathways to Self Sufficiency Program, in partnership with the Alliance Worknet and the Center for Human Services.
2. Community Services Agency - Pathways to Well-Being (Katie A.), in partnership with the Behavioral Health and Recovery Services.
3. Authorize the Chairman of the Board of Supervisors to sign a letter expressing the appreciation of the Board of Supervisors to all programs submitted for consideration this year.

FISCAL IMPACT:

The Pathways to Self Sufficiency Program is funded by a Federal grant awarded by the Office of Child Support Enforcement and the Pathways to Well-Being Program is funded by Child Welfare and Mental Health realignment dollars. There is no fiscal impact associated with this item.

BOARD ACTION AS FOLLOWS:

No. 2015-446

On motion of Supervisor Chiesa, Seconded by Supervisor DeMartini  
and approved by the following vote,  
Ayes: Supervisors: Chiesa, Monteith, DeMartini, and Chairman Withrow  
Noes: Supervisors: None  
Excused or Absent: Supervisors: O'Brien  
Abstaining: Supervisor: None

- 1)  Approved as recommended
- 2)  Denied
- 3)  Approved as amended
- 4)  Other:

MOTION:

ATTEST:

  
CHRISTINE FERRARO TALLMAN, Clerk

File No.

Approval of the Stanislaus County Board of Supervisors Effective Partnership Recognition for the Department of Child Support Services Pathways to Self Sufficiency Program in Partnership with Alliance Worknet and the Center for Human Services, and the Community Services Agency Pathways to Well-Being Program in Partnership with Behavioral Health and Recovery Services  
Page 2

**DISCUSSION:**

The Stanislaus County Board of Supervisors is committed to building strong relationships with local, regional and federal agencies, as well as business and community partners. One of the Board of Supervisors' priorities is Effective Partnerships and each County department is encouraged to partner in their business and service approach to maximize public service outcomes.

Each year, the Board of Supervisors recognizes two outstanding partnerships involving County departments that embody the County's vision to be the best County in America. These partnerships exemplify what can be accomplished when dedicated individuals come together to find creative and innovative ways to achieve exceptional results to serve our community.

Annually, the organization engages in a process that recognizes and rewards effective partnerships and two programs have been selected for this year's recognition. The Stanislaus County Effective Partnership Recognition Committee is comprised of Supervisor Dick Monteith, Salida Municipal Advisory Council Member Katherine Borges, Mark Averell from the City of Modesto and Dale Butler of the Latino Emergency Council. The committee has completed their work. Five applications were submitted for the recognition. All five proposals represented exceptional partnership efforts. During the month of July, the Committee interviewed each of the proposers and evaluated the submissions based on the following criteria:

- Alignment with the Board of Supervisors' Strategic Direction;
- Team Diversity;
- Impact in the Community;
- Measureable Outcomes; and
- Financial Measures.

The Committee is proud to announce the partnerships chosen to receive the Stanislaus County Board of Supervisors' 2015 Effective Partnership Recognition as follows:

- *The Department of Child Support Services (DCSS) Pathways to Self Sufficiency (PASS), in partnership with Alliance Worknet and Center for Human Services was chosen in the category recognizing partnerships with non-governmental agencies/organizations; and*
- *The Community Services Agency (CSA) Pathways to Well Being (Katie A.) in partnership with Behavioral Health and Recovery Services, was chosen in the Inter-governmental partnership category.*

Approval of the Stanislaus County Board of Supervisors Effective Partnership Recognition for the Department of Child Support Services Pathways to Self Sufficiency Program in Partnership with Alliance Worknet and the Center for Human Services, and the Community Services Agency Pathways to Well-Being Program in Partnership with Behavioral Health and Recovery Services

Page 3

**The DCSS – Pathways to Self Sufficiency Partnership** is a collaborative effort between the Stanislaus County Department of Child Support Services (DCSS), Alliance Worknet (AW) and the Center for Human Services (CHS), to create the Pathways to Self Sufficiency (PASS) program, which is part of a national evidence-based demonstration project. The goal of PASS is to improve the reliable payment of child support, thereby improving the child's well-being and avoiding or reducing public costs. Many poor non-custodial parents cannot support their children as they face multiple barriers, including lack of formal education, marketable work skills, and parenting skills. By partnering with expert organizations in the community, the program consists of several key components: 1) child support case management, 2) employment services, to include job placement and retention, and 3) fatherhood/parenting activities.

As a result of this program, DCSS, AW, and CHS have successfully come together to help individuals receive intensive case management for their child support case, overcome employment barriers, and strengthen relationships with their children, all in one package. Much great work goes on in the community in an effort to provide support to fragile families. By working together, the three agencies have begun to break down some silos that have historically existed, subsequently realizing greater efficiencies.

**The CSA – Pathways to Well-Being, (Katie A.) Partnership** with Behavioral Health and Recovery Services (BHRS) was created by the need to implement a court decision (Katie A. v Bonta) involving the provision of mental health services for foster children. The State requirements were extensive and required the development of new tools, new policies and new procedures that are family centered, collaborative and ensure that foster youth are assessed and referred for mental health services. In July 2002, the federal class action lawsuit was filed on behalf of California foster youth and children at risk of out-of-home placement. The suit was brought against the California Department of Healthcare Services (DHCS), the California Department of Social Services (CDSS) and Los Angeles County Department of Children and Family Services. The lawsuit sought to improve the provision of specialty mental health services and supportive services for children and youth enrolled in the Child Welfare system, or at imminent risk of placement in foster care in California. In 2011, the District Court gave final approval of a settlement agreement recognizing an entitlement to individualized, intensive home and community-based health services through Medi-Cal.

This partnership implemented Child and Family Team (CFT) meetings to ensure that the family/youth voice, choice, and preference are present throughout the process. Additionally, the partnership also created a newsletter to keep staff up to date on progress, and the development of a comprehensive database accessible by CSA and BHRS for effective communication.

Approval of the Stanislaus County Board of Supervisors Effective Partnership Recognition for the Department of Child Support Services Pathways to Self Sufficiency Program in Partnership with Alliance Worknet and the Center for Human Services, and the Community Services Agency Pathways to Well-Being Program in Partnership with Behavioral Health and Recovery Services  
Page 4

In recognition of the success of this program, the Departments were invited to present at the State Pathways to Well-Being convening this past month to showcase their accomplishments.

The following other County departments submitted applications for their good works as well:

- Department of Environmental Resources – Household Hazardous Waste Facility Partnership;
- Department of Planning and Community Development – One-Stop Shop Permitting Process Partnership; and
- Stanislaus County Clerk-Recorder Office – Disability Resource Agency for Independent Living Partnership.

These departments are also to be commended for their focus on partnership work and positive outcomes.

The names of this year's selected partnerships will join previous recognized partnerships on the plaque located in the Board Chambers foyer and will serve as a long-standing testament to the outstanding efforts of Stanislaus County employees and their partners.

**POLICY ISSUE:**

Approval of this item supports the Board of Supervisors' priority of Effective Partnerships by celebrating the outstanding efforts of County departments and their partners.

**STAFFING IMPACT:**

There are no staffing impacts associated with the recognition of County departments' partnership efforts.

**CONTACT PERSON:**

Patricia Hill Thomas, Chief Operations Officer. Telephone: (209) 525-6333

ATTACHMENTS AVAILABLE  
FROM CLERK

“Individual commitment to a group effort—  
that is what makes a team work, a company  
work, a society work, a civilization work “

*Vince Lombardi*

Patricia Hill Thomas  
Chief Operations Officer



# Effective Partnership Recognition

## Board Priority: Effective Partnerships

- The Board of Supervisors are committed to building strong relationships with local, regional and federal agencies, business and community partners
- Each County Department is encouraged to partner to maximize public service outcomes
- Each year, the Board of Supervisors recognizes two outstanding partnerships that embody the County's vision to be the beset County in America and exemplify the benefit of working together



# Effective Partnership Recognition

The Effective Partnership Recognition Committee :

- Supervisor Dick Monteith,
- Katherine Borges, Salida Municipal Advisory Council
- Mark Averell, City of Modesto
- Dale Butler, Latino Emergency Council



# Effective Partnership Recognition

Five applications were submitted --all five proposals listed below represented exceptional partnership efforts.

- Child Support Services – Pathways to Self Sufficiency (PASS)
- Clerk Recorder – Disability Resource Agency for Independent Living (DRAIL)
- Community Services Agency—Pathways to Well-Being (Katie A.)
- Environmental Resources – Household Hazardous Waste Facility
- Planning and Community Development – One-Stop Shop Permitting Process





# Effective Partnership Recognition

- The Evaluation Committee evaluated all proposals based on the following criteria:
  1. Focus on alignment with the Board's Strategic Direction
  2. Team Diversity
  3. Impact in the Community
  4. Measureable Outcomes
  5. Financial Measures



# Effective Partnership Recognition

The two partnerships chosen for the 2015 Awards:

- *Child Support Services (DCSS)– **Pathways to Self Sufficiency (PASS)** chosen in the category recognizing partnerships with non-governmental agencies/organizations. Partnership includes DCSS, Alliance Worknet and Center for Human Services*
- *Community Services Agency (CSA) – **Pathways to Well-Being (Katie A.)**, chosen in the inter-governmental category. Partnership is comprised of Community Services Agency and Behavioral Health and Recovery Services*



# Effective Partnership Recognition

## Child Support Services, Pathways to Self Sufficiency (PASS)

- National Evidenced-Based demonstration project
- PASS Goal is to improve reliable payments of child support, therefore improving child's well-being
- Strengthens families and reduces public costs
- Assists parents experiencing barriers , i.e., housing, employment, legal , parenting support network ,etc.
- Partnership aligns with Federal Office of Child Support to provide Holistic , family-centered services to strengthen families
- Relationships between parents and children improve greatly



# Effective Partnership Recognition

## Partner Organizations:

- *Alliance Worknet – assists with employment related support to 69% of the participants. Approximately 60% of the participants have become employed*
- *Center for Human Services,-- Provides parenting classes, 11 participants have graduated from the 15 week parenting class program as of June 2015*



# Effective Partnership Recognition

## Panelists comments:

- “Great Program, changing cycles with participants”
- “Wow! If only all government and private sector partnerships worked this effectively and cohesively. PASS is indeed a program that every county should adopt and model!”
- “This Partnership is a well organized program that clearly meets the Board’s priorities and provides excellent service to its customers”



# Effective Partnership Recognition

## Community Services Agency – Pathways to Well-Being

- Created to implement court decision (Katie A. lawsuit) involving the provision of mental health (MH) services for children involved in child welfare
- Implementation of program required higher level of collaboration
- State requirements included new tools, policies and procedures that are family centered
- Requirement to ensure foster youth are assessed and referred for mental health services





# Effective Partnership Recognition

## Partnership Accomplishments:

- Katie A. orientation
- Core Practice Model
- Child and Family Team Meetings
- Developed Comprehensive Database
- Screening Tools
- Intensive Care Coordination
- Intensive Home Based Services
- Partnership presented at the State Convening this past August to showcase accomplishments



# Effective Partnership Recognition

## Impact/Outcomes:

- 100% of children entering Child Welfare Court System are referred for a mental health assessment through the partner agency, Behavioral Health and Recovery Services. Those in need of MH services are referred to MH Practitioner,
- Child & Family Team goal is to promote natural supports within child's community
- Saving foster care dollars by preventing entry/re-entry into foster care
- Reduction in placement changes, psychiatric hospitalizations





# Effective Partnership Recognition

## Impact/Outcomes Continued:

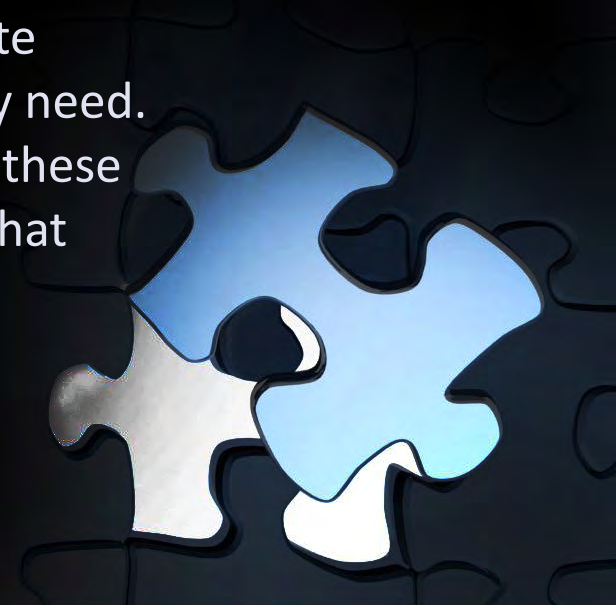
- Maintaining children in the home
- Reducing child abuse and neglect recidivism
- Child Well-Being



# Effective Partnership Recognition

## Panelists comments:

- “This is a totally engaged partnership. They really have a handle on their respective roles and how they individually fit into the partnership. This partnership has committed and passionate partners, and that is why this partnership works so well!”
- “Pathways offers a conduit to assist society’s most helpless members: mentally ill children to be able to navigate through the different programs to get the help they need. Katie A. may have been the impetus to breakdown these silos , but the Pathways Partnership teamwork is what makes the program a success.”



# Effective Partnership Recognition

A special thank you to all the departments that submitted proposals for the 2015 Effective Partnership Recognition Award

Supervisor Dick Monteith

*Member of the Effective Partnership Evaluation Committee*

1. Child Support Services – Pathways to Self Sufficiency Partnership – Non-governmental category
2. Community Services Agency – Pathways to Well-Being Partnership – Inter-governmental category



# Effective Partnership Recognition

## Chairman Terry Withrow

- Evaluation Panel

1. Supervisor Monteith
2. Mark Averell – City of Modesto
3. Dale Butler – Latino Emergency Council
4. Katherine Borges – Salida Municipal Advisory Council



# Effective Partnership Recognition

Thank you!

