

THE BOARD OF SUPERVISORS OF THE COUNTY OF STANISLAUS

ACTION AGENDA SUMMARY

DEPT: Parks and Recreation

BOARD AGENDA # B-12

Urgent Routine

AGENDA DATE September 30, 2014

CEO Concurs with Recommendation YES NO
(Information Attached)

4/5 Vote Required YES NO

SUBJECT:

Approval of Exclusive Use Agreement/Permit with Symbiosis Events, LLC, to Hold a Symbiosis Gathering and Music Festival in the Back Area of Woodward Reservoir Regional Park from Thursday, September 17, 2015, through Sunday, September 20, 2015 and Find the Project Categorically Exempt from the California Environmental Quality Act

STAFF RECOMMENDATIONS:

1. Approve the filing of a Notice of Exemption finding that the proposed event is exempt under the provisions of the California Environmental Quality Act pursuant to State guidelines section 15323.
2. Approve the Exclusive Use Agreement/Permit with Symbiosis Events, LLC, to hold a Symbiosis Gathering and Music Festival, in the back area of Woodward Reservoir Regional Park from Thursday, September 17, 2015, through Sunday, September 20, 2015.
3. Authorize the Director of Parks and Recreation, or designee, to direct Symbiosis Events, LLC, to adhere to the requirements set forth as outlined in the Temporary Exclusive Use Event Agreement/Permit.

(Continued next page)

FISCAL IMPACT:

If approved, approximately \$86,782 - \$133,982 will be collected for the event fees, exclusive use, and reservation fees. Additional revenue may be realized from park entrance fees if the event participants choose to enter into the developed area of the reservoir to utilize the covered picnic areas, boat ramps, and camping areas.

BOARD ACTION AS FOLLOWS:

No. 2014-510

On motion of Supervisor Chiesa, Seconded by Supervisor Withrow and approved by the following vote,

Ayes: Supervisors: Chiesa, Withrow, Monteith, and Chairman De Martini

Noes: Supervisors: O'Brien

Excused or Absent: Supervisors: None

Abstaining: Supervisor: None

1) Approved as recommended

2) Denied

3) Approved as amended

4) Other:

MOTION:

ATTEST:


CHRISTINE FERRARO TALLMAN, Clerk

File No.

Approval of Exclusive Use Agreement/Permit with Symbiosis Events, LLC, to Hold a Symbiosis Gathering and Music Festival in the Back Area of Woodward Reservoir Regional Park from Thursday, September 17, 2015, through Sunday, September 20, 2015 and Find the Project Categorically Exempt from the California Environmental Quality Act

RECOMMENDATIONS (Continued):

4. Authorize the Director of Parks and Recreation to negotiate and approve future events with the Symbiosis event promoters.

DISCUSSION:

The Department of Parks and Recreation has received an exclusive use request from Symbiosis Events, LLC, (Symbiosis) an event production company, requesting exclusive use of the back area of Woodward Reservoir Regional Park (Attachment 1) from Thursday, September 17, 2015, through Sunday, September 20, 2015 during which they would hold a Symbiosis Gathering and Music Festival. Symbiosis organizers would be on-site from Thursday, September 10, 2015, through Monday, September 28, 2015, to allow for set up of the event as well as dismantle and clean up after the event. These dates could vary slightly due to other planned events and the final permit will reflect actual dates approved.

Woodward Reservoir Regional Park (WRRP) is located at 14582 26 Mile Road, a few miles north of the City of Oakdale, off Highway 120. This regional park offers over 3,500 acres of land, 2,500 acres of reservoir for recreation, and camping/open space for outdoor recreation activities. The facility can accommodate tent, trailer, and recreational vehicle camping including full hook-up, developed and undeveloped campsites. Daily recreational opportunities include: swimming, fishing, boating, kayaking, canoeing, picnicking, water and jet skiing, waterfowl hunting, use of a go-kart track, and radio controlled airplane flying.

The WRRP hosts several large outdoor events each year and holiday weekends draw thousands. Every year for the past 19 years the County's Fireworks celebration occurs at the Facility drawing an average of 30,000 people to the park. Memorial Day and Labor Day weekends draw an average of 17,000 and 21,000 persons respectively to the park. Other large events at WRRP include the National Field trials (3,500 people), Hobbie Cat Regatta (300 people), Golden Gate Dachshund field test, Sage Hen Field test (300 people); Zombie Run (1000 people); go-kart races, bike races, tri-athlons, cross country races, weddings, and church/company picnics many of which included amplified sound and large numbers of persons at the Facility.

Symbiosis has been in the business of promoting large educational conferences and festival style events featuring music, art, and presentations in a camping environment with an ecological lifestyle theme since 2005, and has successfully produced, and managed over 21 similar events throughout California, Nevada, and Australia (Attachment 2).

In September 2013, a Symbiosis event was held at WRRP. Staff determined at that time that the issuance of an exclusive use permit for the Symbiosis event was exempt from the California Environmental Quality Act under CEQA Guidelines 15323 as a Class 23 Categorical exemption.

Approval of Exclusive Use Agreement/Permit with Symbiosis Events, LLC, to Hold a Symbiosis Gathering and Music Festival in the Back Area of Woodward Reservoir Regional Park from Thursday, September 17, 2015, through Sunday, September 20, 2015 and Find the Project Categorically Exempt from the California Environmental Quality Act

Of the approximately 8,000 people who camped and attended the 2013 event, 63% resided within the State of California, 94% were from the United States, and 6% arrived from other parts of the globe including, Canada, Europe, China, Japan, Australia, Brazil and South Africa. The 5-day event had a positive economic impact on the local area estimated at over \$500,000. Pre-event and post-event media outlets reached an estimated 97,692,000 people worldwide through The Modesto Bee, The Oakdale Leader, Rolling Stones Magazine, The Daily Californian, Elektro Magazine, Huffington Post, The Examiner, Elite Daily, SF Weekly, and many others, promoting the City of Oakdale and WRRP and highlighting WRRP as an idyllic venue for special events. Because of the September 2013 event's success, other event organizers have contacted the Department to tour the area and discuss potential events.

Local agencies involved in the planning of the 2013 event included the Sheriff's Office, California Highway Patrol, Stanislaus Consolidated Fire, and Mountain Valley Emergency Medical Services. Following the 2013 event, the Department conducted a debriefing meeting with the event producers and the key agencies involved, to discuss any concerns they may have had. The Department also held a special event community meeting that included neighbors, the City of Oakdale, and the event's promoters and coordinators. This meeting provided an opportunity for members of the community to express their concerns, which were primarily related to noise and traffic. To address the concerns expressed, the Department contracted with an acoustical engineering consulting firm that specializes in acoustics, noise and vibration control, and audiovisual system design, to provide recommendations regarding the control of noise levels.

In preparation for the September 2015 event, additional planning meetings were held with the event promoters, coordinators, and local agencies to ensure concerns had been addressed. Likewise, on March 10, 2014, the Department held another special event community meeting in Oakdale to provide an opportunity for Symbiosis to address the concerns expressed by members of the local community. Symbiosis worked cooperatively to incorporate numerous changes designed to reduce complaints regarding noise and traffic. A fully detailed plan is outlined in both the Symbiosis Operations Packet (Exhibit A) and the Temporary Exclusive Use Event Agreement/Permit (Attachment 3). An overview of the traffic and noise plans are outlined below:

Traffic:

- An additional staging area has been added and traffic monitors will be stationed outside of the venue after hours to monitor and handle festival traffic along 28 Mile Road and to prevent attendees from attempting to enter the festival via the park main entrance and/or parking or entering private property along the road.
- In order to minimize vehicle movement during the event, no "ins" or "outs" will be allowed for general attendees.
- Flagger will be on duty during high traffic times to ensure that the right-of-way for non-festival traffic is maintained along Woodward Lake Drive and 28 Mile Road.

Approval of Exclusive Use Agreement/Permit with Symbiosis Events, LLC, to Hold a Symbiosis Gathering and Music Festival in the Back Area of Woodward Reservoir Regional Park from Thursday, September 17, 2015, through Sunday, September 20, 2015 and Find the Project Categorically Exempt from the California Environmental Quality Act

- To keep traffic flowing smoothly, attendees will be ushered off the road into the identified festival entrance gate and routed to a staging area.
- Increased signage will be used to direct attendees to the festival entrance and off the roads.

Noise:

In February 2014, the Department contracted with Acoustical Engineering Consultants (AEC) to complete a noise impact assessment for events involving music at WRRP.

Field sound tests were used to establish baseline levels in and around the WRRP. Acoustical modeling was used to predict sound levels from the proposed event at the nearest residential properties. The assessment identified noise reduction measures that would help to limit noise transmission from the WRRP. Proposed measures included limits on speaker level output, proper sound system design and orientation, the use of acoustical barriers, and the appointment of a dedicated Noise Monitor to measure and respond to community noise complaints during events. The Department and the Symbiosis event promoters, support the recommendations within this report.

To test the recommendations made by AEC, Symbiosis conducted a field sound test on the evening of July 17, 2014, between the hours of 9:05 p.m. to 12:20 a.m. Prior to the sound test, the Department mailed approximately 6,550 sound test notification letters to property owners within a five mile radius of WRRP advising them of the upcoming sound test sometime over a four day time span, and to provide a dedicated phone line to facilitate the communication of residents with the Department staff during the sound test. The letter instructed people to call the dedicated number to report if they heard noise during the test.

The mock concert consisted of two sets of speakers in two locations on the peninsula within the park, operating on generator power. Continuous sound measurements were made at a distance of approximately 150 feet from each of the speaker setups. Source sound levels at 150 feet from the speakers for Setup 1 averaged between 86 dB(Average, or "A") and 95 dB(A) during tests and were representative of typical event levels. Sound levels for Setup 2 averaged 75 to 79 dB(A). During the test, AEC measured sound levels at four residential locations, which resulted in levels at all sources at approximately 40 dB(A). It was not possible to filter out background sources to try to isolate the actual Symbiosis sound system levels. Sources such as wind through trees, nearby sprinklers, and occasional vehicles on neighborhood streets were dominant.

AEC concluded that the measured sound test decibel levels were appropriate; however, based on the testing recommended imposing C-weighted (i.e., bass) limits as well to minimize the potential for low frequency bass sounds to annoy the surrounding community, which was a prominent complaint during the 2013 event.

Approval of Exclusive Use Agreement/Permit with Symbiosis Events, LLC, to Hold a Symbiosis Gathering and Music Festival in the Back Area of Woodward Reservoir Regional Park from Thursday, September 17, 2015, through Sunday, September 20, 2015 and Find the Project Categorically Exempt from the California Environmental Quality Act

Prior to the sound test, staff received a total of 42 calls from residents who generally wanted to express appreciation for the notification of the upcoming sound test. Several days prior to the actual testing, multiple calls were received from three callers in particular, reporting that they were currently hearing the sound test. The callers were advised that the sound test had not yet begun. One caller wanted to express their concern regarding the nearby gun club and stated that the noise coming from the club is of greater concern than the music festival in 2013 or the proposed 2015 festival, and requested that our efforts be re-directed to the gun club. Another caller offered to assist with the event in any capacity they might be needed. Several callers were concerned that testing would be conducted throughout the night, which was not the plan and they were advised of this. Many callers expressed concern about high volume music being played 24 hours a day for the duration of the festival and expressed that they would not support such an event. Several callers suggested lowering the amplified sound during late night and overnight hours during weekdays if music would be permitted 24 hours per day. One caller reported not hearing the music during the 2013 festival and as an employee in a nearby business, reported no issues with event patrons. Lastly, several callers expressed support for the return of the music festival to the area. All callers were advised that the department was responding to their feedback and that the purpose of the testing was to address concerns raised during the 2013 music festival.

During the actual sound test, staff received a total of nine calls from residents who reported hearing or vaguely hearing the sound test. Two of the calls were duplicates from one residence. Callers that reported hearing the test advised staff of the following: they were hearing sounds on and off, they heard low-frequency sound, one reported only hearing the low-frequency when their windows were open, one stated the music was very faint and low frequency, and one stated that the sound was tolerable. Several callers thanked the department for conducting the sound test and providing a hotline, which allowed them to provide feedback.

Also during the sound test, staff drove around to several locations nearby and reported subjectively either not hearing any music to hearing very faint sounds which they would not otherwise notice if they had not been listening carefully and aware that the sound test was underway. Staff also took decibel readings at several locations around the WRRP property boundaries with readings ranging from 38.2 dB(A) to 45.3 dB(A). Background noises of leaves rustling, dogs barking, and crickets chirping were predominant.

During the week following the sound test, staff received a total of nine calls from residents who again wanted to thank the department for conducting the sound test. Several callers reported that they either did not hear the sound test or that the sound was significantly lower than the 2013 music festival. One caller reported that the music was within reasonable limits and one caller reported hearing the sound test for two days after the actual sound testing concluded. Another caller said they enjoyed the 2013 music festival and felt the people responsible had been very thoughtful as they reside very close to the venue and were not only invited to attend at no cost, but were treated very nicely. They felt that the music festival was not a bother because it was only a few days and that they should be permitted to return in 2015.

Approval of Exclusive Use Agreement/Permit with Symbiosis Events, LLC, to Hold a Symbiosis Gathering and Music Festival in the Back Area of Woodward Reservoir Regional Park from Thursday, September 17, 2015, through Sunday, September 20, 2015 and Find the Project Categorically Exempt from the California Environmental Quality Act

Results of the field sound tests support the steps that were taken by the Symbiosis event organizers during the mock concert in that the reduced decibel levels and speaker reconfigurations provided a more even coverage over a smaller audience area and limited spillover to adjacent areas. Another consideration is that sound barriers were not constructed for the sound test but will be in place during the event that will potentially reduce sound levels even further.

The 2015 programming hours also have been revised from the previous 24-hour programming in 2013 to reduce the duration of large amplified stages specifically, during the evenings and preceding working weekdays (Thursday and Sunday).

Restructuring and rescheduling the entertainment program to control sound levels and to reduce overall levels are scheduled as follows:

Thursday	12:00PM Open
Thursday	12:00PM until 11:59PM
Friday	9:00AM until Saturday 2:00AM
Saturday	9:00AM until Sunday 2:00AM
Sunday	9:00AM until 11:59PM
Monday	12:00AM Closed

In addition to the revised programming hours, the following steps will be taken:

- Redirected stages and sound system directions to avoid the spreading of sound.
- Noise monitoring will be ongoing during the event, with modifications and adjustments to decibel levels being made as needed to ensure the sound remains within the permitted levels.
- Introduction of a noise monitor to work closely with law enforcement and the production staff for the duration of the event, with the responsibility of addressing any noise issues.
- Sound walls/barrier systems will be used to reduce the spreading of sound beyond immediate areas.
- Introduction of a "hotline" phone number, to facilitate the communication of residents with the Symbiosis team. All phone calls will be answered and noise concerns will be verified, documented and adjustments will be made if over the approved levels. All concerns will be logged and recorded to allow for preventative measures in the future. A follow-up call will be made to advise the caller of the actions/steps taken to address the concern. These concerns will be shared with the Department of Parks and Recreation for future event planning consideration.

Environmental Review:

CEQA Guidelines include a number of project classes that the Secretary for Natural Resources has determined do not have a significant effect on the environment, and that are therefore categorically exempt from the preparation of environmental documents. (Guidelines, §15300 et seq.) "Class 23 consists of the normal operations of existing facilities for public gatherings for

Approval of Exclusive Use Agreement/Permit with Symbiosis Events, LLC, to Hold a Symbiosis Gathering and Music Festival in the Back Area of Woodward Reservoir Regional Park from Thursday, September 17, 2015, through Sunday, September 20, 2015 and Find the Project Categorically Exempt from the California Environmental Quality Act

which the facilities were designed, where there is a past history of the facility being used for the same or similar kind of purpose. For the purposes of this section, "past history" shall mean that the same or similar kind of activity has been occurring for at least three years and that there is a reasonable expectation that the future occurrence of the activity would not represent a change in the operation of the facility. Facilities included within this exemption include, but are not limited to, racetracks, stadiums, convention centers, auditoriums, amphitheatres, planetariums, swimming pools, and amusement parks." (Guidelines, §15323)

The normal operations of WRRP include individual recreational activities such as camping and water sports, but it also includes large-scale public events that occur throughout the year. The proposed Symbiosis event is much like many of the other events that have occurred at the facility in the past. Looking at the documentation of past events, the County's General Plan and supporting documents, and the County's Parks Master Plan, staff believes substantial evidence is present for the Board to determine the proposed event falls within the Category 23 exemption. The proposed event involves neither the presence of higher attendance, greater traffic, nor the generation of more noise at the facility than prior events. The proposed activity will occur in a lightly populated agricultural area on property that is set aside specifically for recreational activities of this sort and the event will occur in an area of the facility which will not be adversely impacted by the activity.

The Department worked with Counsel in reviewing this proposed event and has determined it Categorically Exempt from the California Environment Quality Act (CEQA), pursuant to Section 15323 Normal Operations of Facilities for Public Gatherings of the CEQA Guidelines, as the proposed event does not have the potential to have a significant effect on the environment.

Staff requests the Board of Supervisors approve the filing of a Notice of Exemption (Attachment 4) with the Stanislaus County Clerk-Recorder's Office (pursuant to Public Resources Code Section 21152 and CEQA guidelines section 15062) finding that the proposed event is exempt under the provisions of CEQA pursuant to State Guideline Section 15323 – Normal Operations of Facilities for Public Gatherings.

The Department of Parks and Recreation supports the exclusive use request and is now in the final stages of permitting this event, provided that Symbiosis adheres to all the requirements set forth by the Department of Parks and Recreation as outlined in the Temporary Exclusive Use Event Agreement/Permit.

Fees:

The Department is requesting Board approval for the following event fees, which include two scenarios. A flat fee of \$75,000 would be assessed if, on the dates of the event, body-to-water restrictions are in place at WRRP (Scenario 1).

Approval of Exclusive Use Agreement/Permit with Symbiosis Events, LLC, to Hold a Symbiosis Gathering and Music Festival in the Back Area of Woodward Reservoir Regional Park from Thursday, September 17, 2015, through Sunday, September 20, 2015 and Find the Project Categorically Exempt from the California Environmental Quality Act

If, however, there are no water restrictions in place on the dates of the event a per person, per day fee would be assessed with a guaranteed minimum of \$75,000 with an additional \$5 per person per day assessed. The two scenarios are as follows:

Scenario #1 Water Restrictions at Woodward Reservoir:

Flat fee		\$ 75,000
Staff Cost (Actual)	Estimated @	\$ 2,082
Vendor fee (Estimated 97 vendors @ \$100 per booth)	Estimated @	\$ 9,700
Estimated Total Fees		\$ 86,782

Scenario #2 No Water Restrictions at Woodward Reservoir:

\$5 Per Person, Per Day (Guaranteed Minimum \$75,000) (Example: 6000 x \$5 x 4 days)		\$ 120,000
Exclusive Use Fees (Paid in advance)		\$ 2,200
Staff Cost (Actual)	Estimated @	\$ 2,082
Vendor fees (Estimated 97 vendors @ \$100 per booth)	Estimated @	\$ 9,700
Estimated Total Fees	(for 6000 attendees)	\$ 133,982

The Department is requesting approval to negotiate future events with the Symbiosis event promoters, as they have requested to return to WRRP in May 2016 and again in September 2016. The Department would like to partner with the Symbiosis event promoters, to negotiate a long-term use agreement provided that the 2015 event is successful.

POLICY ISSUE:

Approval of this agenda item is consistent with the Board's priorities of Efficient Delivery of Public Services and Effective Partnerships by promoting a healthy environment and improved quality of life in the community in partnership with commercial-based organizations that can provide special interest recreational opportunities within the Stanislaus County park system.

Approval of Exclusive Use Agreement/Permit with Symbiosis Events, LLC, to Hold a Symbiosis Gathering and Music Festival in the Back Area of Woodward Reservoir Regional Park from Thursday, September 17, 2015, through Sunday, September 20, 2015 and Find the Project Categorically Exempt from the California Environmental Quality Act

STAFFING IMPACTS:

Existing department staff will handle the coordination of this special event and the event promoters will reimburse the Department for actual staff costs, which are estimated to be approximately \$2,082.

CONTACT PERSON:

Jami Aggers, Director of Parks and Recreation Telephone: 209-525-6770

ATTACHMENTS:

1. Woodward Map
2. Symbiosis Gathering Event Title
3. Temporary Exclusive Use Event Agreement/Permit
4. Notice of CEQA Exemption

Exhibit A – Symbiosis Operations Packet

Woodward Reservoir Regional Park

Symbiosis Event Area

Erickson Slough

Woodward Reservoir

Stanislaus County Park

DUCK COVE

26-Mile Rd

Google



SYMBIOSIS GATHERING

Event Title: Symbiosis Gathering
Event Location: Woodward Reservoir, Oakdale CA
Dates: September 10, 2015 – September 28, 2015

Short Description: An educational conference and festival style event featuring music, art, and presentations with an ecological lifestyle theme,

Timeline:
Set-Up: September 10, 2015 – September 16, 2015
Event Programming: September 17 - 20
Takedown: September 18 - 28, 2015

Estimated Number of Attendees: 6,000-8,000
Estimated Number of Vehicles: 2500-3000

Typical Event Format (By Zone):

- 1) Entertainment and Education Zone (-15 acres):
 - 2-3 large stages for speaker presentations and live music
 - 5-8 areas for small workshops and classes
 - 3-4 areas for art galleries
 - 10-15 large art installations
 - 40-60 booths for non-profit and for-profit vendors
 - 8-12 booths for food and drink vendors
- 2) Camping Zones (-20 acres)
 - Presenter and Artist Camping
 - Staff Camping
 - Attendee Camping
- 3) Parking Zones (-50 acres)
 - Attendee Parking
 - Artist/Presenter Parking
 - Staff Parking
- 4) Staff Operation Zones (-5 acres)
 - Waste and Recycling Sorting Area
 - Production Offices
 - Heavy Equipment & Inventory Yard
 - Staff Cafeteria and Quarters

Temporary Structures:

- 2-3 large stages with shade structures
- 5-8 workshop platforms with shade structures
- 4-6 wooden buildings
- 5-7 portable trailers
- 5-8 large tents
- 10-15 domes
- 70+ 10x10 or 10x20 vending booths
- 10-15 Teepees
- 40-70 4-person Camping Tents

Operational Infrastructure:

- 100-120 portaloets with 3-5 ADA
- 40-60 handwashing stations
- 8-10 30-yard Recycling and Waste bins
- 60-120 Waste receptacles
- 5-10 250-gallon Graywater tanks
- 5-10 1000, 2500 and 5000 gallon water tanks
- 6-12 Generators
- 3-5 Light Towers
- Fencing to manage event boundaries

Safety Personnel

- Security: 1:200 attendees
- Medical: 1:250 attendees
- Fire: 10-20 FF1s
- Lifeguards: 12-24
- Traffic Management Staff: 6-20 (to vary according to traffic flow)

About Symbiosis Gathering:

Symbiosis Gathering is a festival extravaganza with a focus on creating transformative and inspiring experiences that are based on a deep respect for one's community and environment. Typically spanning five days of camping and featuring art, music and educational programming, the Gathering provides a space for the fusion of aesthetics, sound, and natural living, in an atmosphere of interactive participation. Since its humble beginnings in 2005, the Gathering continues to remain close to its original goal of bringing together new ideas, a rising popularity in sustainable living, and gourmet music. Educational topics generally focus on a holistic integration of mind, body, and spirit and range from hands-on lessons in sustainability, community-building and self-sufficiency to courses on

movement arts, sciences, wisdom traditions and leadership skills. Classes will also encourage the development of socially- and environmentally-responsible projects, self-awareness, and getting to know the ecological and cultural history of the local region. Musical programming will feature an assortment of world, electronic and band performances.

Environmental & Safety Considerations:

We take the safety and environmental impact of our events very seriously. To maintain the utmost discipline and stewardship, we strictly reinforce the following regulations:

Pack In Pack Out Policy: Our goal is to leave a site even better than how we found it and we educate this heavily via our promotions, regulations, and education. Both our patrons and staff are very familiar with packing out all waste that they generate while onsite. In addition to general litter, all graywater and blackwater generated onsite will be pumped out and taken off-site regularly by a local vendor. Recycling stations are also located onsite and all recycling is carried out to the local recycling center after the event.

Green Procurement and Vending Policy: All items that are distributed or sold to our festival attendees must be environmentally-friendly, recyclable or reusable. Approved food, drink, and craft vendors must also abide by the county food and health regulations.

Zero-Waste Policy: We are committed to diverting 100% of attendee waste from the landfill. Ways of encouraging these practices have included introducing a Dish Re-Use Program and no-plastic policy. In past events, we have diverted 65-85% of total waste generated from going to the landfill with a 80-97% attendee waste diversion rate. We also employ a highly experienced Green Team that works tirelessly throughout the event to ensure that all recycling and waste generated onsite are sorted and removed from the premises.

Traffic Management Policy: We enforce a no in-and-out policy to keep patrons within event boundaries for the duration of the event. By extending attendee entry and exit timeframes to include the option to exit the venue the morning after programming ends, we have also been able to cut down our traffic impact by another 15%. We also work with local agencies to carry out all necessary easements, signage, roadwork, and traffic flow conditions to ensure a smooth transition in and out of the venue.

Carbon Offset Program: We have created a number of strategies, including attendee carpooling incentives and local procurement plans, to miti-

gate the amount of greenhouse gases used at and for the event. We also offset impacts generated by our events by donating a percentage of our sales to a carbon offset program or local roadwork program.

Tourism and Economic Development: Our events can draw a significant amount of tourism and revenue into the area and we make it a priority to work with local agencies and businesses to optimize these opportunities.

Community Support Program: We have worked with local community members to support sustainable and community-based initiatives in every location we have held an event at. Our donations have gone to supporting senior care, childcare, community garden, roadwork, community center programs.

Symbiosis Large Events History:

2005 Symbiosis Gathering, Santa Cruz CA
2006 How Weird Street Fair, San Francisco, CA
2006 Symbiosis Gathering, Calaveras County, CA
2007 Yuri's Night, NASA Ames, Moffett Field, CA
2007 How Weird Street Fair, San Francisco, CA
2007 Symbiosis Gathering, Calaveras County, CA
2007 Zero Ground San Francisco, CA
2008 Yuri's Night, NASA Ames, Moffett Field, CA
2008 How Weird Street Fair, San Francisco, CA
2009 Sand By The Ton, Oakland CA
2009 How Weird Street Fair, San Francisco, CA
2009 Symbiosis Gathering, Tuolumne County, CA
2009 Subterra, San Francisco, CA
2010 Yuri's Night, NASA Ames, Moffett Field CA
2010 NASA Education Day, NASA Ames, Moffett Field
2010 How Weird Street Fair, San Francisco, CA
2010 Sand By The Ton, Oakland CA
2011 NASA Education Day, NASA Ames, Moffett Field
2012 Symbiosis Solar Eclipse Gathering, Pyramid Lake, NV
2012 Eclipse Festival, Cairns, Australia
2013 How Weird Street Fair, San Francisco, CA
2013 Symbiosis Gathering, Woodward Reservoir

TEMPORARY EXCLUSIVE USE EVENT AGREEMENT / PERMIT

Request from: SYMBIOTIC EXPERIENCES, INC.

Background Summary: Symbiotic Experiences, Inc., which recently (January 2015) changed their name and form from Symbiosis Events, LLC, is an event production company that promotes educational conferences and festival style events that feature music, art, and presentations with an ecological lifestyle and sustainable living theme, and is dedicated to creating transformative and inspiring experiences that are based on a deep respect for the community and environment. Educational offerings include workshop and conference programming, which overlap with 3-4 days of music and festival programming. Educational topics focus on a holistic integration of mind, body, and spirit and range from hands-on lessons in sustainability, community building, and self-sufficiency to courses on movement arts, sciences, wisdom traditions, and leadership skills. Classes also encourage the development of socially- and environmentally-responsible projects, self-awareness, and getting to know the ecological and cultural history of the local region. Musical programming will feature an assortment of world, electronic and band performances.

Facility/Area of Use:

Woodward Reservoir (back area of reservoir - located between Tom's Gate and 28-Mile Road Gate)

Event Name: Symbiotic Experiences, Inc. Music Festival

Date(s) of Use: Thursday, September 10, 2015, through Monday, September 28, 2015

Event Dates: Thursday, September 17, 2015, through Sunday, September 20, 2015

Contact: Karen KoChen, karen@symbiosisevents.com, 415-328-2528

Open to the Public?

Private, for profit event, which requires registration and payment of fee(s) to attend.

Requirements/Conditions of Exclusive Use Event Agreement/Permit:

I. General Conditions

- 1) All Parks' rules and regulations will be enforced by the Sheriff's Department.
- 2) Symbiotic Experiences, Inc. shall work with all other necessary groups, organizations, or other governmental personnel as determined by applicable codes, laws, and regulations to ensure a safe event including, but not limited to: The Department of Environmental Resources

Environmental Health and Solid Waste Divisions, The Sheriff's Department, California Highway Patrol, Oakdale Police Department, Stanislaus Consolidated Fire, as well as the Oakdale Chamber of Commerce, Oakdale Tourism & Visitors Bureau, Public Works, Risk Management, County Counsel, and the Mountain Valley Emergency Medical Services.

- 3) This Exclusive Use Event Agreement / Permit shall be valid only for the Music Festival on the days and hours specified on the permit.
- 4) Symbiotic Experiences, Inc. shall provide the Department of Parks and Recreation insurance coverage which meets the liability limits as required by the Stanislaus County Risk Management Division with regards to special events.
- 5) Permittee shall indemnify the County according to the Organizational Hold Harmless Agreement.
- 6) Individual Hold Harmless Agreements for each participant shall be acknowledged electronically as a condition of the on-line registration process for the Music Festival at Woodward Reservoir. An electronic and / or hard copy shall be provided to Stanislaus County Parks and Recreation immediately upon request.
- 7) An Outdoor Entertainment Activities Permit is required by the Stanislaus County Sheriff's Department. A copy of the approved Outdoor Entertainment Activities Permit as issued by the Sheriff's Department shall be provided to the Department of Parks and Recreation immediately upon receipt by the Event Director.
- 8) An Alcohol Letter of Approval from the Stanislaus County Sheriff's Department and an Alcohol License issued by the Alcohol Beverage Control Board in Stockton, California are required. A copy of both the Alcohol Letter from the Stanislaus County Sheriff's Department and the Alcohol License issued by the Alcohol Beverage Control Board in Stockton, California shall be provided to the Department of Parks and Recreation immediately upon receipt by the Event Director.
- 9) If the Stanislaus County Department of Public Works requires an Encroachment Permit, a copy of the approved Encroachment Permit as issued by Public Works shall be provided to the Department of Parks and Recreation immediately upon receipt by the Event Director.
- 10) The event shall be held in accordance with the attached Woodward Reservoir Regional Park, site map (Attachment 1) and the 2015 Operations Packet (Exhibit A). If an addendum to the Operations Packet is necessary after the issuance of this permit, then an addendum outlining any necessary changes to the permit shall be agreed upon and signed by both the Events Director and the Stanislaus County Parks and Recreation Department.
- 11) The anticipated number of participants is between 6,000 – 8,000, which equates to approximately 2,000 – 2,700 vehicles. The number of permitted attendees shall not exceed 10,000 persons unless the Stanislaus County Parks and Recreation Department is first notified and approves a plan for handling the overage.

- 12) Notification of the 2015 Music Festival will expand from the previous three (3) mile radius, for the 2013 Music Festival, to a five (5) mile radius. The event notification shall be on eye-catching paper that clearly identifies the event.
- 13) Symbiotic Experiences, Inc. will abide by and assure that attendees abide by all posted signage that states "No vehicles trailers or tents beyond this point", as per County Ordinance 18.08.010 Designation of public campgrounds.

II. Emergency Services and Security

- 1) The event shall be held in complete compliance with the Music Festival Fire Prevention Plan, outlined in the Operations Plan (Exhibit A).
- 2) The security Contractor shall be approved by the Stanislaus County Sheriff's Department. The event shall be held in complete compliance with the Music Festival Security Plan, outlined in the Operations Plan (Exhibit A).
- 3) The event shall be held in complete compliance with all of the medical measures described in the Emergency Medical Plan, outlined in the Operations Plan (Exhibit A).
- 4) Symbiotic Experiences, Inc. shall provide on-site basic medical services consisting of qualified currently licensed and/or certified medical personnel to render primary care and first aid. Medical personnel may consist of a team of two or more available doctors, nurses, (LVN or RN), nurse practitioners, physician assistants, or EMTs (1A, II or P's). Doctors or medical personnel on-site shall be responsible for ordering and maintaining on-site necessary medical supplies.
- 5) Symbiotic Experiences, Inc. shall maintain communication with the Stanislaus County Sheriff's Department to ensure compliance with the above emergency service conditions.
- 6) For serious conditions (illness/injury) and life threatening situations, on-site medical personnel shall implement the local E.M.S. system (by calling 9-1-1 or by accessing Stanislaus County Dispatch).
- 7) Event medical team will not transport injured individuals unless the individual (s) is in immediate danger in the current location. The EMS team that arrives on site in the event of an emergency shall do the transporting of any injured individuals.
- 8) If ambulance services are required, providers may be local or out-of-county and shall provide on-site emergency care in accordance with the treatment policies of their EMS system of origin.
- 9) Use of Reservoir
 - If water restrictions are in place, there shall be absolutely no body-to-water contact. Symbiotic Experiences, Inc. shall be the primary steward when enforcing such order. The Department of Parks and Recreation will work in collaboration with the Sheriff's Department to assist in enforcing any no body-to-water order.

- In the absence of water restrictions, during event hours, swimming is allowed during swimming hours designated by Symbiotic Experiences, Inc. at designated swimming areas with lifeguards on duty. Lifeguards shall be provided by Symbiotic Experiences, Inc.
- 10) Attendees shall be permitted to bring floaties. Floating art installations are allowed as long as they adhere to criteria established by Symbiotic Experiences, Inc. in conjunction with the Woodward Reservoir Park Manager and Stanislaus County safety agencies. Boating from the event area is not permitted unless authorized by Symbiotic Experiences, Inc. for production purposes only.
 - 11) Symbiotic Experiences, Inc. shall create signage indicating to boaters launching from other areas of Woodward Reservoir that a private event is taking place and that boaters are not permitted to shore up nor disembark at the event site. The Park Manager shall approve these signs prior to their placement at Woodward Reservoir's Main Boat ramp and Heron Point Boat ramp locations. These signs shall be removed immediately upon completion of the event.
 - 12) Although campfires are prohibited at the event, as noted in the Fire Prevention Plan (Exhibit A), event staff will permit tribal / ceremonial fires and will notify the Stanislaus County Sheriff's Department and the Department of Parks and Recreation as to the locations of the tribal / ceremonial fires.

III. Traffic and Parking

- 1) The event shall be held in complete compliance with the Music Festival Traffic Plan, outlined in the Operations Plan (Exhibit A).
- 2) Symbiotic Experiences, Inc. shall maintain communication with the Stanislaus County Sheriff's Department, California Highway Patrol, and incorporate recommendations made by the Stanislaus County Sheriff's Department, California Highway Patrol, Stanislaus County Department of Public Works, and the Park Manager to ensure compliance with all traffic and parking conditions.
- 3) The main entrance for all attendees shall be the back gate entrance to the park off 28-mile road. In order to bypass attendee traffic during high traffic hours, production staff shall be allowed to enter through the main park entrance as long as a staff member is stationed at Tom's Gate to check credentials and only allow admittance to production crew personnel. A list of expected vehicles to enter via the main park entrance per day shall be submitted to Park staff one week prior to the event-opening day.
- 4) Traffic monitors will be stationed outside of the venue after hours to monitor festival traffic along 28-mile Road and prevent attendees from attempting to enter the festival via the park main entrance and / or parking or entering private property along the road.
- 5) In order to minimize vehicle movement during the event, no ins and outs are allowed for general attendees.

- 6) Flaggers will be on duty during high traffic times to ensure the right-of-way for non-festival traffic, is maintained along Woodward Lake Drive and 28-mile Road.
- 7) Additional electronic signage shall be placed at 26-mile/Dorsey Roads, directing vehicles to 28-mile road.
- 8) To keep traffic flowing smoothly, attendees will be ushered off the road into the identified festival entrance gate and routed to a staging area.
- 9) Increased signage will be used to direct attendees to the festival entrance and off the roads.

IV. Noise

The 2015 programming hours also have been revised from the previous 24-hour programming in 2013 to reduce the duration of large amplified stages specifically, during the evenings and preceding working weekdays (Thursday and Sunday).

Restructuring and rescheduling the entertainment program to control sound levels and to reduce overall levels are scheduled as follows:

Thursday	12:00PM Open
Thursday	12:00PM until 11:59PM
Friday	9:00AM until Saturday 2:00AM
Saturday	9:00AM until Sunday 2:00AM
Sunday	9:00AM until 11:59PM
Monday	12:00AM Closed

In addition to the revised programming hours, the following noise reduction steps will be taken:

- Redirected stages and sound system directions to avoid the spreading of sound.
- Noise monitoring will be ongoing during the event, with modifications and adjustments to decibel levels being made as needed to ensure the sound remains within the permitted levels.
- Introduction of a noise monitor to work closely with law enforcement and the production staff for the duration of the event, with the responsibility of reducing any noise issues.
- Sound walls/barrier systems will be used to reduce the spreading of sound beyond immediate areas.
- Introduction of a "hotline" phone number, to facilitate the communication of residents with the event team. All phone calls will be answered and noise concerns will be verified, documented and adjustments will be made if over the approved levels. All concerns will be logged and recorded to allow for preventative measures in the future. A follow-up call will be made to advise the caller of the actions/steps taken to addressing the concern. These concerns will be shared with the Department of Parks and Recreation for future event planning consideration.

V. Water, Garbage and Sanitation

- 1) The event shall be held in complete compliance with the Waste Management Plan, outlined in the Operations Packet (Exhibit A).
- 2) Symbiotic Experiences, Inc. shall provide one water closet and one urinal for every two hundred males (200), and one water closet for every one hundred females (100), or major fraction of such number permitted to attend.
- 3) Symbiotic Experiences, Inc. shall provide and position all necessary portolets, including ADA portable restrooms, and shall be responsible for all related costs for the provided portolets for this event.
- 4) All toilets shall be maintained in a clean and sanitary manner during the festival.
- 5) Within seven days after the end of the festival, the premises shall be cleaned up and all trash and debris removed.
- 6) Repairs to the area of use, if needed, shall be determined by Woodward Reservoir Regional Park staff upon conclusion of the event.
- 7) Symbiotic Experiences, Inc. shall incorporate all recommendations made by the Stanislaus County Environmental Resources Department to ensure compliance with all water and sanitation conditions.

VI. Food Service

- 1) All persons selling, preparing, delivering, or serving food or beverages shall comply with California Codes set by the Stanislaus County Environmental Resources Department.
- 2) Symbiotic Experiences, Inc. shall provide sanitary facilities for food vendors that include adequate provisions for potable water supply and storage, refrigeration, and washing and utensil clean up; that meet the requirements of the Environmental Resources Department in accordance with all applicable California Temporary Food Facility laws.
- 3) Symbiotic Experiences, Inc. shall provide the Stanislaus County Department of Parks and Recreation with a list of all vendors and / or vendor booths participating in the Music Festival no later than three weeks prior to the event date.

VII. Fees

- 1) With the exception of the activities authorized within the designated "Exclusive Use" area, for the purpose of this permit, all other County fees pursuant to the Parks and Recreation Department's fee schedule for entering Woodward Reservoir shall apply.
- 2) The Exclusive Use Fee of \$90 per day and the \$10 per day Reservation Fee, is payable to the Department of Parks and Recreation, and shall be received at the time the Event Approval

Request is submitted, for each event date. Should the event be cancelled by Symbiotic Experiences, Inc. for any reason, the Exclusive Use Fee is non-refundable. However, if the County, for any reason, were to be the cause of cancellation then the Exclusive Use Fee shall be refundable. The Exclusive Use Fee may be paid via credit card (over the phone or in person), or a check may be sent to Stanislaus County Department of Parks and Recreation, Attn: Exclusive Use, 3800 Cornucopia Way, Suite C, Modesto, CA 95358.

- 3) The Exclusive Use and Vendor Fees for this event are in compliance with the 2014 Parks and Recreation Fee Structure, effective May 8, 2014.
- 4) Fees include two scenarios. A flat fee of \$75,000 would be assessed if, on the dates of the event, water restrictions are in place at WRRP (Scenario 1). If, however, there are no water restrictions in place on the dates of the event a per person, per day fee would be assessed with a guaranteed minimum of \$75,000.

Scenario #1 Water Restrictions at Woodward Reservoir:

Flat fee		\$ 75,000
Staff Cost (Actual)	Estimated @	\$ 2,082
Vendor fee (Estimated 97 vendors @ \$100 per booth)	Estimated @	\$ 9,700
Estimated Total Fees		\$ 86,782

Scenario #2 No Water Restrictions at Woodward Reservoir:

\$5 Per Person, Per Day (Guaranteed Minimum \$75,000) (Example: 6000 x \$5 x 4 days)		\$120,000
Exclusive Use Fees (Paid in advance)		\$ 2,200
Staff Cost (Actual)	Estimated @	\$ 2,082
Vendor fees (Estimated 97 vendors @ \$100 per booth)	Estimated @	\$ 9,700
Estimated Total Fees	(for 6000 attendees)	\$133,982

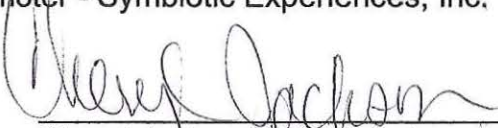
In addition to the external guests, the event fees of \$5 per person, per day, will be charged for volunteers, artists' guests, and vendor guests. No fees will be charged for the Symbiotic Experiences, Inc. build team, which consists of event critical staff such as: electricians, construction staff, builders, sound engineers and security teams. The maximum number of build team members permitted with no fees shall not exceed 1,350.

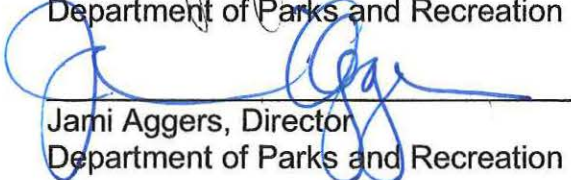
The remaining balance of event fees must be paid in full and received by the Stanislaus County Department of Parks and Recreation no later than 5:00 p.m., twenty-one (21) days after each scheduled event. Symbiotic Experiences, Inc. will be assessed a \$200 late fee if not paid by 5:00 p.m., twenty-one (21) days after each event. After thirty (30) calendar days, an additional five percent late fee will be assessed on any total remaining balance owed. If not paid in full within thirty (30) calendar days, no future events will be scheduled until all charges are paid in full.

It is noted that additional conditions and / or requirements to the above by the Stanislaus County Board of Supervisors as approved on September 30, 2015, will become part of this Temporary Exclusive Use Permit.

ACKNOWLEDGEMENT OF REQUIREMENTS AND CONDITIONS

Signature:  Date: 2/6/15
Event Promoter - Symbiotic Experiences, Inc.

Recommended by:  Date: 3-1-15
Cheryl Jackson, Manager I
Department of Parks and Recreation

Approved:  Date: 3/2/15
Jami Aggers, Director
Department of Parks and Recreation



Date Received for Filing: _____

By: _____

Title _____

NOTICE OF EXEMPTION

MEMO TO: Stanislaus County Clerk/Recorder
 Office of Planning and Research

FROM: Stanislaus County Department of Parks and Recreation

SUBJECT: FILING OF NOTICE OF EXEMPTION UNDER CALIFORNIA ENVIRONMENTAL QUALITY ACT (CEQA)

PROJECT TITLE: Symbiosis Special Event September 2015

PROJECT LOCATION: Woodward Reservoir, 26-Mile and Dodds Road, Stanislaus County

PROJECT DESCRIPTION: This special event scheduled to be held in September 2015 is a festival style event featuring music, art, and presentations in a camping environment with an ecological lifestyle theme.

NAME OF AGENCY APPROVING PROJECT: Stanislaus County Department of Parks and Recreation
3800 Cornucopia Way, Suite C
Modesto, CA 95358

EXEMPT STATUS: (check one)

Categorical Exemption: California Environmental Quality Act, 15323 – Normal Operations of Facilities for Public Gatherings

REASONS WHY PROJECT IS EXEMPT: The normal operations of Woodward Reservoir Regional Park include individual recreational activities such as camping and water sports and also includes large scale public events that draw thousands of persons occur throughout the year. The proposed event involves neither the presence of higher attendance, nor the generation of more noise, at the facility than prior events. The proposed activity occurs in a lightly populated agricultural area on property that is set aside specifically for recreational activities of this sort.

LEAD AGENCY CONTACT PERSON: Merry Mayhew
Stanislaus County Department of Parks and Recreation
Telephone: (209) 525-6700
3800 Cornucopia Way, Suite C
Modesto, CA 95358

OPERATIONS PACKET
SYMBIOSIS GATHERING 2015

TABLE OF CONTENTS

1	Security Plan	Page 3
2	First Aid / Medical Plan	Page 5
3	Fire Prevention Plan	Page 6
4	Traffic Management Plan	Page 10
5	Emergency Response Plan	Page 13
6	Incident Report Template	Page 17
7	Waste Management Plan	Page 19
8	Noise Management Plan	Page 23
9	Key Contacts	Page 27

Symbiosis Gathering Security Plan

Purpose

To create a safe environment for residents, participants, patrons, and vendors to enjoy the event by maintaining a strong collaboration between festival management, traffic control, ticketing, security, medical and fire prevention crews and local law enforcement during the event.

I. SAFETY PERSONNEL

Personnel

Command Post
Operations Manager
Perimeter Security
Traffic Crew
Medical Crew
Fire Prevention/Safety Crew
Lifeguards
Ticketing Staff
Festival Security

Command Post:

Nexus of communication between all facets of festival production mentioned above with multi-channeled two way radios operating 24 hours from festival open to close

Operations Manager:

Oversees and maintains cohesive efforts between Security, Medical, Parking, and Ticketing staff to ensure efficient entry and exit from the site and safety onsite.

Perimeter Security:

Monitors proper use of the site as well as enforcing boundaries of the event 24 hours per day

Traffic Crew:

Responsible for clearly marking roads and designated parking spots and for patron vehicle flow from entrance to car camping areas

Medical Response Team:

EMT and EMS trained personnel on call 24 hours from festival open to close

Fire Prevention/Safety

Firefighter #1 Certified personnel with full safety equipment including nomex shirt and pants, helmet with nomex hood, gloves, goggles, safety boots, and fire shelter. The Stanislaus Consolidated Fire Protection District will station one Brush50 and staff a team made up of one Fire Captain, one Engineer, and one Firefighter at the site during high burn times each day of the event.

Lifeguards:

Lifeguards will provide oversight at designated swimming areas during designated daylight hours

Ticketing Staff:

Will provide ticketing services including purchase, will call, and wrist-banding during designated times from festival open to close

Festival Security:

Will work in collaboration with all above teams to engage in conflict resolution and ensure a safe, enjoyable time for all parties involved

The eight teams are linked together through the Command Post and are all on call for emergency security matters. All major safety operations are directed by the center of communications, the Command Post.

The Command Post is also directly tied to the communication network of the Stanislaus County Parks and Recreation Department, the Stanislaus County Environmental Resources Department, the Stanislaus County Sheriff's Department, the California Highway Patrol, Oakdale Police Department, local ambulance provider, air ambulance and Oak Valley District Hospital.

II. GENERAL PROTOCOL

Alcohol Policy and Minors:

Underage drinking will result in the immediate confiscation of alcohol.

Drug Policy

Drug use is strictly prohibited and is grounds for immediate ejection from the event. All cases of drug use found on the premises will be immediately reported to the Stanislaus County Sheriff's Department.

No Glass Policy

Glass will not be allowed on festival grounds.

General Eviction or Arrest Policy

The Symbiosis Security Liaison will work with the Stanislaus County Sheriff's Department to establish protocol for addressing attendee evictions and arrests. Arrestees will be detained on site and turned over to the Stanislaus County Sheriff's Department officers as soon as possible.

Water Levels

If water levels are below body-to-water-contact requirements, the Symbiosis Security Liaison will work with the Stanislaus County Sheriff's Department to establish protocol for preventing water access to attendees.

Public Campground Signage

Compliance with posted signage stating "No vehicles trailers or tents beyond this point", as per County Ordinance 18.08.010 Designation of public campgrounds, shall be enforced at all times.

Event Boundaries

With the exception of designated boats approved by Symbiosis for production purposes, boaters are not permitted to shore up nor disembark at the event site. The Symbiosis Security Liaison will work with the Stanislaus County Sheriff's Department to establish protocol for maintaining event boundaries.

Ceremonial Campfires

Although campfires are prohibited at the event, tribal / ceremonial fires will be permitted. Symbiosis event staff will notify the Stanislaus County Sheriff's Department and the Department of Parks and Recreation as to the locations of the tribal / ceremonial fires.

SYMBIOSIS GATHERING
FIRST AID/EMERGENCY MEDICAL SERVICES

Emergency medical services (EMS) shall be supervised by the designated Medical Leader who will make appropriate contact with the The Mountain-Valley EMS Agency to assure temporary accreditation of ALS personnel during the festival. The Mountain-Valley EMS Agency must review the certification status of any BLS personnel that will be working at the event.

The following are some of the Medical Unit Leader's responsibilities:

Coordinated by the Medical Unit Leader, a complete medical program is in place, including:

- A. Onsite mobile hospital unit staffed by trained personnel equipped to handle basic first aid and minor injury.
- B. On-call ambulance for transportation to Oakdale hospital for emergency treatment. All patients transported from the scene will be transported in accordance with Mountain-Valley EMS Agency policies. All requests for ambulance service be handled by calling 9-1-1.
- C. On-call air ambulance. All air ambulances will be requested by calling 9-1-1. The ValleyCom Ambulance Dispatch Center is responsible for requesting air ambulance in compliance with Mountain-Valley EMS Agency policies.
- D. On-duty ALS and BLS personnel. Main staffing location at the center of the festival programming area.
- E. Continuous contact with local EMS agencies, Stanislaus County Sheriff and Highway Patrol to coordinate emergency actions.
- F. Full report of any medical problems encountered is documented using the incident report.
- G. Individual hospitals do not need to be contacted regarding the event. Base Hospital contact, if necessary, will occur through Oak Valley District Hospital.
- H. Assist in other areas i.e. fire, evacuation and other safety concerns.

Special Event Incident Reports

Purpose:

To organize appropriate data in all cases where special enforcement, medical aid or to notify Symbiosis festival officials of any special event that may assist or aid any given situation.

Documentation:

The special event form is to be completed by all affiliated staff personnel and should be filled out immediately after the incident.

Routing:

Special Event form, once completed, shall be taken to the Command Post.

SYMBIOSIS GATHERING **FIRE PREVENTION PLAN**

Purpose: This report is designed to outline the fire prevention and suppression plan for the Symbiosis Music Festival held at Woodward Reservoir.

I. FIRE PREVENTION MEASURES

1. **No Campfires.** All pre-festival advertising (posters, flyers, newspapers, magazines, etc.) will strongly communicate no fires are allowed. Programs handed to each attendee at the event will discuss all fire restrictions including “no campfires”. If necessary, the stage microphone will be used to remind the audience that no fires are allowed. Trainings and workshops will also be given during the event to educate attendees about fire safety.
2. **Continuous Watering of Festival Site.** A water truck will be used before and during the festival to dampen the roads, parking areas, and wherever deemed useful and will be available for any emergency.
3. **Concessions to Minimize Vehicle Movement.** The festival will not allow in-out access to general attendees.
4. **Communications.** Open communication will be maintained with all local agencies to insure all preventative measures are taken. We will be ready to consult with the Stanislaus Consolidated Fire Protection District, Stanislaus County Sheriff’s Department, Modesto Regional Fire Authority, CalFire, Highway Patrol, and Stanislaus Parks and Recreation Agency concerning security, fire, and traffic control. Event will maintain 60 walkie-talkie radios in full-time operation to insure instant communication. Fire prevention is a primary concern of Symbiosis Music Festival management. It has been and will continue to be our policy to obtain the assistance and guidance of safety specialists to assure a comprehensive fire prevention plan.
5. **County Fire Personnel.** The Stanislaus Consolidated Fire Protection District will station one Brush50 and staff a team made up of one Fire Captain, one Engineer, and one Firefighter at the site during high burn times each day of the event.
6. **A Trained and Instructed Staff.** The operational personnel of the Symbiosis Music Festival are given specific instruction in the maintenance of fire prevention measures.
7. **Fire Prevention Team.** Firefighter #1 certified personnel will be on hand during the event and will report directly to the Fire Captain of Stanislaus Consolidated Fire Protection District upon their arrival. In addition, a water truck and our own extinguishing equipment will be accessible throughout set-up, event hours, and take-down phases of the event.

II. FESTIVAL STAFF RESPONSIBILITIES WHEN A FIRE OCCURS WITHIN THE PROJECT AREA OR VICINITY

A. Dispatcher

1. When dispatcher is notified he or she will immediately notify on-call Fire personnel.
2. Immediately notify Stanislaus Consolidated Fire Protection District, Modesto Regional Fire Authority, and Stanislaus County Sheriff's Department on dedicated line and/or radio channel.
3. Remain on duty to handle messages and initiate action upon requests until relieved or released by the Stanislaus Fire agencies.

B. Firefighter#1 Personnel

1. Upon notification will work in tandem with onsite Stanislaus Consolidated Fire Protection District staff to address the incident.
2. If Stanislaus Consolidated Fire Protection District personnel are not onsite, they will immediately gather project crew, tools, and equipment and head to the incident location.
3. Will serve as main eyes and ears for Stanislaus Consolidated Fire Protection District and Command Post until relieved or replaced by the Stanislaus Fire agencies.
4. Will maintain contact with Command Post, Medical Leader, and Fire agencies as needed to monitor and address fire incident.

C. Trained and Instructed Staff Members

1. Will report to manpower staging area to provide assistance as needed.

III. TOOLS AND EQUIPMENT

A. Tools

1. On the project areas designated by C.O.R or project representatives.

Sealed box containing tools in serviceable condition:

05 shovels

10 scraping tools

15 canteens

25 flashlights

02 pulaskies

18 pressurized chemical fire extinguishers

02 A-10 2 1/2 pressurized chemical fire extinguishers

2. Vehicles

- a. On each water truck:

01 shovel

01 8 oz. extinguisher

- b. On each vehicle:

01 shovel

01 8 oz. extinguisher

- c. On each power saw:

01 shovel
01 8 oz. extinguisher

d. On each generator:
01 shovel
01 8 oz. extinguisher

B. Equipment (list of equipment on site)

1. Pickups:

Five pickups of all types (compact, full size, and 4x4) all with full time operators

2. Water Truck:

One truck and one full time operator (capacity of approx. 2,000 gallons)

3. Brush50

Supplied by the Stanislaus Consolidated Fire Protection District in conjunction with CALFIRE

3. Power saws:

Two Homelite models (24 inch cutting bars)

C. Manpower

1. Stanislaus Consolidated Fire Protection District Fire Captain

2. Stanislaus Consolidated Fire Protection District Engineer

3. Stanislaus Consolidated Fire Protection District Firefighter

4. 6-8 available Fire Fighters

IV.. GENERAL PROVISIONS

A. Fire Prevention

1. Burning:

Absolutely no personal campfires allowed

2. Spark Arrestors:

Spark arrestors required for all diesel and gasoline engines (including generators), power saws and other equipment on site.

3. Smoking:

Continual instruction will be given to staff and attendees regarding the safe disposal of cigarette butts.

4. Power Saws and Generators:

Spark arrestors that meet F.S. standards are required on all power saws and generators. An 8 oz. fluid fire extinguisher and size 0 round pointed shovel will be carried with each power saw and be present at each generator while in operation. Gas and oil will be carried only in metal safety cans.

5. Ground Preparation:

Watering of areas including day parking areas and other areas of potential hazard. Water trucks will be used continuously to minimize fire danger and dampen roadways.

6. Communication:

A. Continual communication will be maintained with all festival attendees to assure their awareness of all fire and safety regulations.

B. An on-site communications system will be maintained to insure proper and immediate response to fire danger.

B. Fire Suppression

1. It is understood and agreed that the contractor will do all in his power to prevent and suppress fires on or adjacent to the project area as stipulated.

2. In line with this agreement personnel will be supplied from project crews to fight fires on the project area up to the total number of men and women employed by the contractor, as they are needed by the fire team lead.

C. Duration of Plan

This fire plan will apply to any and all sub-contractors and their employees employed by the contractor, and the contractor will be responsible for making sure that all such sub-contractors and their employees are made aware of the contents of this fire plan. This plan will be in force for the duration of the festival. Additional professional firefighting personnel will be on call throughout the festival.

Symbiosis Gathering: Woodward Reservoir Traffic Plan

POST-2013 ADJUSTMENTS

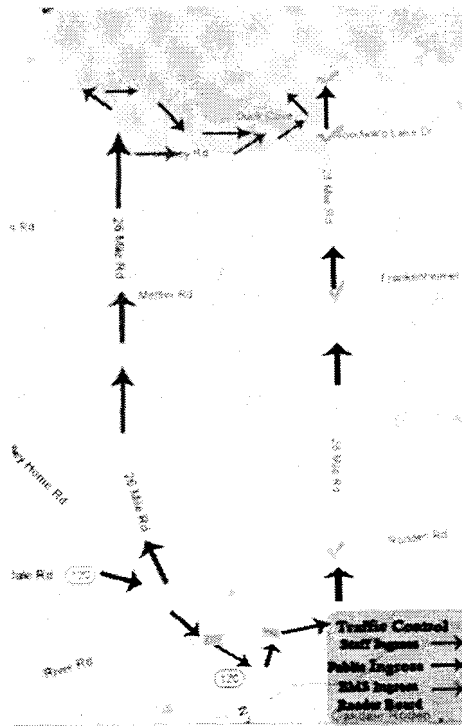
This plan proposes the following changes to the previous plan submitted on March 26, 2013: The addition of Staging Area #6: Traffic attendants will be stationed outside of the venue after hours to monitor festival traffic along 28-mile Road and prevent attendees from attempting to enter the festival via the park main entrance and/or parking on private property along the road.

TRAFFIC OVERVIEW

For the designated dates framed by pre-, during, and post- event, Symbiosis staff will report to the site for festival duties beginning September 14, 2015. The festival officially begins on September 24 at 8am and programming concludes on September 28 at 12am. Following the exodus of general attendees, Symbiosis staff will remain onsite through October 5 to conduct clean up and takedown duties. In order to minimize vehicle movement during the event, no ins and outs are allowed for general attendees.

ROUTES TO WOODWARD RESERVOIR

On the event website, general attendees will be directed to take highway 120 to Rodden Road, continuing onto 28-mile road in order to arrive at the main festival entrance. All production vehicles will be instructed to enter via 26-mile Road in order to bypass festival traffic. Emergency vehicles will turn east onto Dorsey Road and enter the park grounds through the EMS gate located along Dorsey road, whereas production staff will enter via the main park entrance off of 26-mile Road. Staff will be positioned at Tom's Gate to monitor in-and-out access.

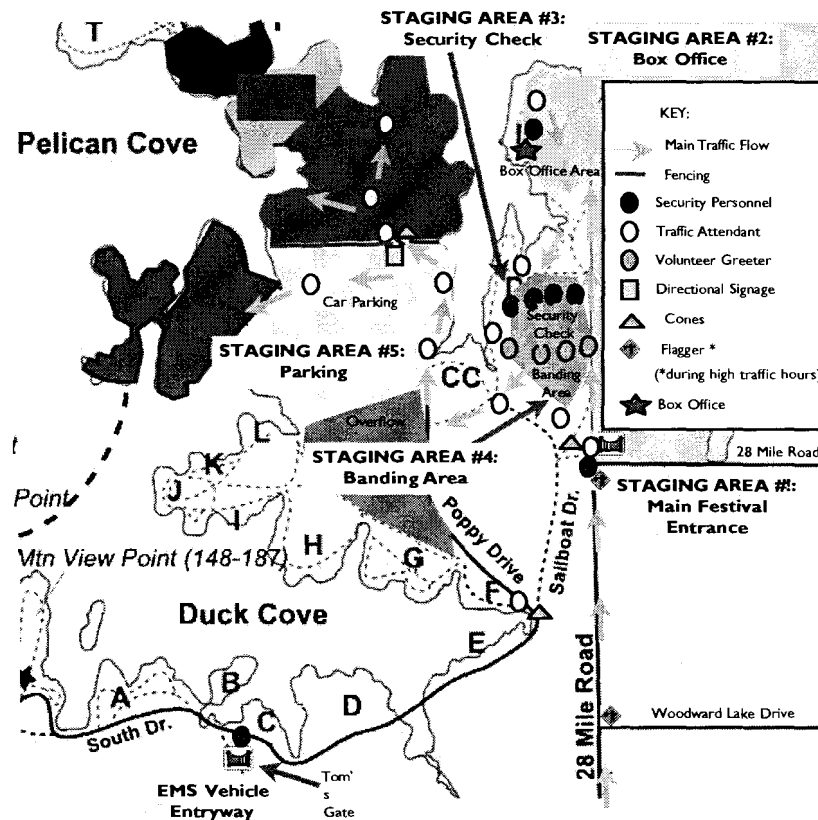


SYMBIOSIS TRAFFIC TEAMS

There will be a variety of Symbiosis work crews at the Entrance, Ticketing site and parking areas directing and managing traffic flow. Staff will be working to pre-band festival goers, position vehicles safely on the road, restrict parking access in undesignated areas, ensure safety and compliance with park regulations, and facilitate non-festival traffic. Two flaggers will be on duty during high traffic times to ensure that right-of-way for non-festival traffic is maintained along Woodward Lake Drive and 28-mile Road.

STAGING AREAS

Symbiosis Gathering Staging Areas



STAGING AREA #1: All festival participants will be directed through the main festival entrance. Flaggers will be positioned along 28 Mile Road and Woodward Lake Drive during high traffic times. When the box office is closed, attendees shall be ushered into this gate to a staging area where they will remain overnight until the box office reopens. Portolets shall be available for attendee usage in this area.

STAGING AREA #2: Attendees will be directed to park temporarily and walk to the box office to collect their hard tickets. They will then return to their vehicle and proceed to the banding area. Attendees with hard tickets in hand will be allowed to bypass this process and proceed directly to staging area #3.

STAGING AREA #3: The security checkpoint will be in place to ensure attendee safety and compliance with park and permit regulations such as no glass, no fireworks, and no weapons. Once vehicle clear the checkpoint, vehicles will continue to staging area #4.

STAGING AREA #4: Attendees in the banding area will have their tickets scanned and will be banded by event personnel. Once banded, volunteer greeters will be stationed to welcome festival attendants to the event and pass along a festival booklet to each attendee.

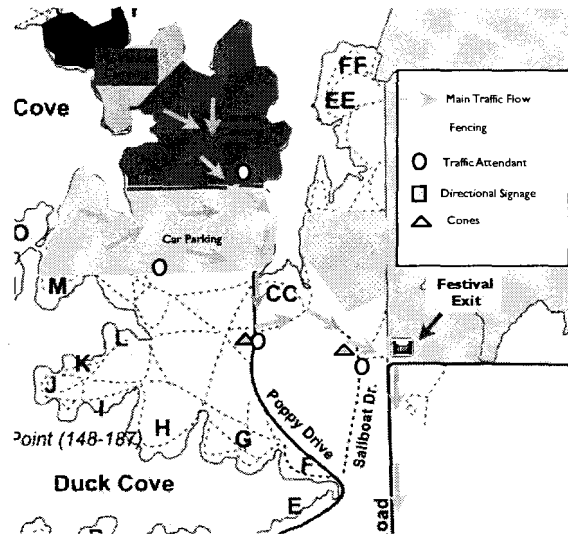
STAGING AREA #5: Traffic attendants will direct vehicles to their appropriate parking spot where they will be parked for the entire duration of their stay at the event.

STAGING AREA #6: Traffic attendants will be stationed outside of the venue after hours to monitor festival traffic along 28-mile Road and prevent attendees from attempting to enter the festival via the park main entrance and/or parking on private property along the road.

EMS ENTRANCE: EEMS ENTRANCE: Emergency vehicles will be routed into the event via the EMS Gate along Dorsey Road.

PRODUCTION ENTRANCE: To avoid attendee traffic on the event's high traffic days, staff and performers will be routed into the event via the park's main entrance off of 26-mile Road. Staff access will be monitored by a designated staff member at Tom's Gate. Once cleared, staff will then proceed to area D to be inspected and banded before proceeding forward to merge with traffic exiting from staging area #4. A list would be provided in advance.

EXODUS



The majority of attendees will depart the event on Sunday, September 27, with a minimal amount preferring to exit on September 28, Monday morning. Event security will ensure that all attendees have vacated the site by noon on September 28. Depending upon exodus requirements, traffic attendants will be stationed to direct traffic out of the venue.

SYMBIOSIS GATHERING
EMERGENCY RESPONSE PLAN

I. PURPOSE

The intent of this plan is to delineate the specific roles and processes required of an emergency response situation that is beyond the scope of normal operating procedures.

II. OBJECTIVES

- A. Identify the duties of onsite personnel, organize and implement a thorough emergency response plan in collaboration with all appropriate agencies.
- B. Establish clear protocol for quick and effective mobilization, dispersion of casualties, mutual aid dispatching, communication and accurate situation evaluation.
- C. Differentiate levels of emergency and priority of patients to communicate the situation.
- D. If an event, beyond the scope of normal operating procedure, were to occur, incident management, including patient distribution, will occur in compliance with the OES Region IV MCI plan.

III. INCIDENT COMMAND PERSONNEL

During an emergency response situation, initial onsite responsibilities will be allocated to the following key personnel:

Incident Commander
Local Agency Response Personnel
Symbiosis Liaison/Administrator
Communications Officer
Event Director

IV. INCIDENT COMMAND SYSTEM (ICS)

The ICS system will be used to determine responsibilities and roles for coordinating the overall response. Each service responding will have its own system for organizing its efforts to meet its responsibilities or assigned duties. It will be our policy to assist the appropriate authority under the direction of our Emergency Response Plan.

INCIDENT COMMAND

Agency/Personnel or Agencies responsible for overall management of an incident site.

INCIDENT COMMANDER

Individual, or agency, responsible for ensuring inter-incident coordination for command operations, planning and logistical matters. This position is normally assigned to the investigative agency. In the event that the investigative agency is not yet onsite, the most qualified personnel at the site of the incident will assume incident command until relieved by a more qualified agency representative or reassigned as necessary.

COMMAND POST

Initial command post will be the pre-designated location assigned by the Symbiosis administration. The incident commander may relocate at his/her discretion. The Command Post will be located at the main production office at the Bayview Boat Ramp area. The Incident Commander, local agency response personnel, appropriate event safety lead(s), event liaison (Symbiosis Administrator), and Event Director shall report to the command post.

COMMUNICATION

All communications shall be controlled through the Command Post. The emergency channel will be Channel (1) for all emergency response personnel. Command Post may designate additional channels as deemed necessary. All communications during an emergency shall be restricted to only emergency traffic. All other coordination shall be administered through the team leader and/or assigned personnel.

The appropriate radio code to clear the radio air is "10-33-Clear all radio traffic for EMERGENCY USE ONLY".

TEAM LEADERS

Supervisory personnel who are assigned to a group of Symbiosis staff to insure a safe and successful event. The team leaders shall work under the direction of the festival Command Post.

MANPOWER STAGING AREA

Manpower staging area is a location that will be set up adjacent to the incident without compromising safety to which all additional manpower personnel shall report for assignment. The Command Post will assign a team leader to this location to supervise manpower personnel.

VI. CASUALTY/PATIENT CATEGORIES

Triage of patients will occur in compliance with OES Region IV MCI Plan.

A. Immediate

These patients are of the highest priority and are removed and treated first. They are the ones that will die within minutes if not treated rapidly. Examples may include: Airway obstruction, massive bleeding, shock, open chest or abdominal wounds, severe head injuries and severe cardiac problems.

B. Delayed

The patients falling into this category are those whose injuries are such that will produce death within a half-hour or more, if not treated. These injuries are serious and need attention; however, treatment and removal may be delayed until the Priority I patients have been stabilized. Examples may include burns, major multiple fractures and spinal injuries.

C. Minor

The type of injuries in this category may have treatment delayed and are generally transported by some means other than ambulance. Examples may include minor fractures, lacerations with minimal blood loss, rib fractures without breathing difficulty and minor burns.

D. D.O.A.

These patients are the already dead or so severely injured that death is certain within a short time, regardless of treatment given. Examples may include traumatic cardiac arrest, massive head injuries with brain matter exposed and massive body mutilation.

VII. EMERGENCY EVACUATION

Shelter-In-Place:

Due to the geographic features of the festival location, shelter-in-place has been identified as the most effective emergency response strategy in the event of an earthquake or fire. Stages will be utilized to communicate with festival participants about the status of the emergency situation and guide attendees to gather in a safe location to await further instructions. Depending upon the emergency situation, patients will be assessed by medical personnel and if appropriate, transported to off-site medical care..

Responsibilities:

A. Traffic Personnel

Will report to the team Traffic Manager for their assignment. The primary function of traffic personnel will be to direct traffic out once the road conditions are assessed and casualty/patient priorities have been completed. The responsibility of the gate team leader is to position personnel so that a smooth traffic flow may be maintained during an evacuation.

B. Security Personnel

Will direct people away from high-danger areas and toward safe gathering spaces. They will also assist the local authorities as needed.

C. Event Managers

Shall report to manpower staging area and will work under the direction of the team leader as needed.

D. Music Area Security

Music area personnel, during performance time, shall report immediately to the Stage Manager and work under the direction of the team leader to direct people to the proper area. Outside of the performance time, music area personnel shall report to the manpower staging area for further assignments.

F. Medical

All medical personnel shall report to the medical staging area that shall be designated at the time of the incident. The Event Medical Unit Leader will serve as a Liaison to the Medical Group Supervisor. The Medical Group Supervisor will be part of the responding emergency response team and will utilize the OES Region IV MCI Plan to mitigate the incident.

G. Communication

All communications shall be controlled by a designated Communications Officer appointed by and located at the Command Post. All communications personnel shall report to the command post. The emergency channel shall be Channel 1 during an emergency event. The Communications Officer may designate additional channels as deemed necessary.

H. Lifeguards

During recreational time lifeguards shall report immediately to the shoreline and work under the direction of the Medical leader. When outside recreational time, lifeguards are to report to manpower staging area for further assignment.

I. Fire

Fire personnel will be stationed in the medical tent or with Stanislaus Consolidated Fire Protection District personnel for the duration of the event. If fires are reported, Incident Command protocol will be enacted immediately. In conjunction, fire personnel will begin addressing the fire situation immediately and report to the Incident Commander and local agencies upon their arrival.

J. Event Liaison

Event Liaison is the Symbiosis administrator and shall report to the Command Post to coordinate evacuation efforts with the incident command personnel.

**Symbiosis Gathering
Incident Report**

NO: _____
Page _____ of _____

Classification:

Security	<input type="checkbox"/>	Date:	_____	Time:	_____
Medical	<input type="checkbox"/>	Ambulance:	_____	Hospital:	_____
Fire	<input type="checkbox"/>	Law	_____	Enforcement:	_____
	<input type="checkbox"/>	Life Guard	<input type="checkbox"/>	Doctor:	_____
Gates	<input type="checkbox"/>				
Other:	<input type="checkbox"/>				

Location of Event: _____

Person: _____ Date of Birth: _____
(last, first, middle)

Address: _____ Business Phone: _____

City: _____ State: _____ Zip: _____

Home Phone: _____ Age: _____

Victim: _____

Address: _____ City: _____ State: _____

Zip: _____ Phone: _____

Witness: _____

Address: _____ City: _____ State: _____

Zip: _____ Phone: _____

Vehicle: _____ Year: _____ Make: Model _____

Narrative: _____

Staff Name: _____ Date: _____ Review: _____

10.1	RADIO RECEPTION POOR	10.27	RPL INFORMATION	10.98	FINISHED LAST ASSIGNMENT
10.2	RADIO RECEPTION GOOD	10.30	DEBERT CONFORM TO RADIO RULES	11.40	NOTIFY IF AMBLANCE NEEDED
10.3	STOP TRANSMITTING	10.31	MESSAGE DELIVERED	11.41	DISPATCH AMBLANCE
10.4	MESSAGE RECEIVED	10.32	REMAIN IN SERVICE	11.42	NO AMBLANCE NEEDED
10.5	RELAY TRAFFIC	10.33	ENTER TRAFFIC CLEAR NETWORK	11.43	DOCTOR REQUIRED
10.6	DELY STANDBY	10.34	NETWORK CLEAR, NORMAL TRAFFIC	11.44	CORONER NEEDED
10.7	OUT OF SERVICE	10.35	CONFIDENTIAL INFORMATION	11.47	INJ RED PERSON
10.8	IN SERVICE	10.36	CONFLICT TIME	11.48	PERSON TRANSPORTATION
10.9	IN SERVICE (MEAL)	10.37	SUSPICIOUS PERSON	11.79	ACCIDENT AMBLANCE ENROUTE
10.10	REPEAT TRANSMISSION	10.38	SUSPICIOUS ALTO	11.80	ACCIDENT MAJOR INJURY
10.11	OUT OF SERVICE SUBJECT TO CALL	10.39	ABANDONED ALTO	11.81	ACCIDENT MINOR INJURY
10.12	FOLLOW UP OTHER UNIT OR OFFICER	10.41	PERSON SHOT AT...	11.82	ACCIDENT PROPERTY DAMAGE ONLY
10.13	OFFICIALS OR VISITORS PRESENT	10.44	SUBJECT	11.83	ACCIDENT NO DETAILS
10.14	CONVOY OR ESCORT	10.45	HEAT AT...	11.84	ACCIDENT DIRECT TRAFFIC AT...
10.15	ASSIST CUP GO THE DEPART. ETC	10.46	PERSONNING	11.85	TOW CAB NEEDED AT...
10.16	RETURN TO STATION	10.48	PERSON DOWN	11.98	MEET OFFICER AT...
10.20	YOUR LOCATION	10.49	BEHARMS BINGESTD	11.99	OFFICER NEEDS HELP
10.21	TELEPHONE YOUR STATION	10.51	TRIPSASSING		
10.21	TELEPHONE YOUR HOME	10.52	LOST PERSON		
10.22	PREPARED LAST ASSIGNMENT	10.53	MISSING PERSON REPORT		
10.23	STANDBY	10.54	REVENUES INVOLVED		
10.24	ASSISTANCE NEEDED AT STATION	10.55	ROAD BLOCK SET UP AT		
10.25	ANY TRAFFIC FOR THIS UNIT	10.62	TAKE A...REPORT AT...		
10.26	NO TRAFFIC FOR UNIT NO.	10.67	ARRIVAL ON SCENE		

CODE 2 - URGENT
 CODE 3 - EMERGENCY
 A - REFERENCE WOMAN INVOLVED

Symbiosis Gathering 2015
Waste Management Plan

POST-2013 ADJUSTMENTS

Based upon data gathered from the 2013 event and the cancellation of the Dish Re-Use Program proposed in 2013, this plan has been updated from the previous plan submitted on March 26, 2013 to reflect revised discard estimates.

Overview

Symbiosis Gathering is a Leave No Trace (LNT) and Pack-in Pack-out event, referring to the concept that a space can be left in nicer and cleaner condition than when first encountered. Attendees are expected to bring minimal waste to the event and pack out any waste that they do generate onsite. Therefore, the goal of the Symbiosis Waste Management team is to limit the amount of waste given to attendees in order to encourage the LNT principle.

Collection points

There will be approximately 35 attendee recycling collection stations located on-site, 10 staff and vendor collection stations and one main sorting station for the dumpster hauling of waste to the appropriate off-site facility. The attendee collection stations will consist of composting, aluminum recycling, and cigarette receptacles. The staff collection stations will consist of five bins, one for each of the following materials: Paper, metal/glass, plastic, compost and landfill. The main sorting station will consist of three dumpsters: single stream recycling, landfill and compost. To ensure 2-3 days of collection, hauling for set-up will be conducted prior to attendees arriving onsite. After the event begins, hauling will be subsequently scheduled as-needed, allowing a 2 to 3-hour lead time for the hauler to arrive onsite. A final hauling will then be scheduled when clean-up sweeps are completed post-event.

Estimated Numbers:

Waste Areas	Projected Waste (Yds)
COMPOST	60
LANDFILL	120
GLASS	10
ALUMINUM	10
CARDBOARD	60
PLASTICS	30

Equipment List

Below is a list of equipment used for both on-site collection and the main sorting station.

- 120 x 20-30gallon collection bins
- Plastic liner bags and compostable liner bags

- 25 signs of each: plastic, paper, metal, compost and landfill
- 25 signs of “leave no trace” or “pack in pack out” variations
- 3 x 8foot tables
- 3 x 14-30yard dumpsters bins
- Shade
- 5 gallon water dispenser
- Gloves & masks
- Crew T-shirts
- Tarps
- Designated pickup truck
- Sorting cloths

Green Crew Staffing & Collection Schedule

Pre-production Sep 14-18

1. Construction of the collection stations: including signage and bags
2. Construction of the main sorting station: including shade, water, tables, etc.
3. Materials sorting and organization
4. Signage posting throughout site
5. Daily collection

Pre-production Sep 19-23

1. Finish construction of all site collection stations
2. Daily collection & cleaning sweeps
3. Daily sorting @ Main
4. Finish posting and making all signs
5. Monitor the waste levels
6. Develop green crew literature in sustainability zone and for portolets
7. Educate Food vendors & distribute vendor compost buckets

During Event Sep 24-27

1. Volunteer education and training
2. Daily collection & cleaning sweeps
3. Daily Sorting
4. Education squad at high traffic collection stations
5. Monitor the waste levels

Post Event Sep 28-Oct 3

1. Daily collection & cleaning sweeps
2. Daily Sorting
3. Walk in camping clean up monitors
4. RV & Car camping clean up monitors

5. General site clean up monitors
6. Line sweeps & MOOP crew
7. Monitor waste levels
8. Deconstruction of unused collection stations (move them to high traffic exit areas if necessary)

Post Event Oct 4-5 (If Required)

1. Daily collection & cleaning sweeps (line sweeps for MOOP)
2. Deconstruct of the waste stations remaining
3. Collect and organize remaining garbage materials back into inventory
4. Oversee final dumpster take away

Accepted Materials List

1. Paper and Cardboard
 - a. Accepted: corrugated cardboard, magazines, office paper, newspapers, dairy/juice cartons, phone books etc.
 - b. Not accepted: wax paper, food contaminated paper, mixed metal and paper (like stapled paper)
2. Metals
 - a. Accepted: Aluminum cans, foil and aluminum bake ware, steel cans and tins, wire coated hangers, empty aerosol cans.
 - b. Not accepted: food contaminated metals, automotive parts, plumbing parts, paint cans with wet or dried paint, electronics.
3. Plastic
 - a. Accepted: clean plastic free of food, Codes 1-7
 - b. Not accepted: Styrofoam.
4. Compost
 - a. Accepted: food soiled paper, fish and meat scraps, food scraps, yard debris, food soiled napkins, compostable cups, straws, forks and to go containers.
 - b. Not Accepted: vegetable oils
5. Glass
 - a. Accepted: internal usage/disposal of glass
 - b. Not Accepted: glass from attendees (glass will not be permitted for attendees onsite)

Signage, Education, and Specifics of Waste Policies

General Site

- Signage at all key places: Camping areas, walk-in camping, all collection stations, heavy traffic roads and foot paths, entry and exit.
- Trained volunteers at heavy traffic waste stations

- The Green crew will be ‘advocating’ pack in pack out principles upon entry and exodus through their presence in key areas. Crew will enforce strict fines if trash is left behind post-event.
- Green Crew will offer a charge service for attendees that want to include their sorted recyclables or landfill in with the main collection dumpsters.

Food Vendors, Staff Catering & Marketplace vendors

- Pre event literature will be sent to production leads in an effort to educate vendors about waste management practices on-site. Upon arrival additional education sessions will take place pre-event to ensure that waste management during event goes as smoothly as possible.
- Vendors must follow strict guidelines regarding the materials they are allowed to use in their kitchen and serve to attendees. Disposable, compostable dish ware be used. Please see the materials list for acceptable materials. Any materials outside of the accepted list should either be left at home or packed out.
- Vendors are expected to limit the amount of packaging they bring on-site by unwrapping goods before they come to site. All vendors must ensure that their sellable items are not disposable or soon-to-be trash items.
- All waste oil will be recycled by a local biofuel provider. Perhaps one day a car will drive down the road running off of recycled Symbiosis gathering juice!

Noise Management Plan

POST-2013 ADJUSTMENTS

Based upon data gathered from the 2013 event, this plan has been modified from the previous plan submitted on March 26, 2013 to provide a comprehensive overview of noise management protocol for the 2015 event including:

- 1) Noise management planning and mitigation strategies aimed at reducing noise pollution in key residential areas identified in the preceding event.
- 2) Revised programming hours reducing the duration of large amplified stages during the evenings preceding working weekdays.
- 3) Redirected stages and sound system directions, to mitigate the spreading of sound.
- 4) Adjusted decibels for key program areas aimed at reducing levels as much as possible without detracting from sound quality and caliber of performance.
- 5) Noise monitoring protocol for on-site and off-site measurements during the event.
- 6) The introduction of a dedicated hotline to process noise complaints and deploy personnel to the site of disturbance to ensure that sound is maintained within acceptable limits.

Overview

This document will provide an integrated noise management plan for Symbiosis Gathering 2015 aimed at clarifying noise sources, noise mitigation measures, noise monitoring protocol, and program areas and scheduling. Many of the procedures described in this plan have been used successfully by concert and multi-day events and will be applied to ensure adherence within permitted levels and the reduction and/or mitigation of noise pollution.

Mitigation Measures

The main noise issues gathered from local feedback after the 2013 event involved event programming hours, especially on Sunday evening, and sound traveling through noise sensitive corridors south and southeast of the site. In order to address these issues, the following measures are proposed:

- Curtailing programming hours on main and regular stages during nights preceding weekdays.
- Curtailing the operation of the main stage.
- Providing more focused “surround sound” PA systems.
- Restructuring and rescheduling the entertainment program to control environmental sound levels and to reduce overall levels, especially after midnight.
- Relocating stages and sound system directions to avoid the spreading of sound.
- Providing a hotline phone number, to facilitate the communication of residents with the Symbiosis team.

1. Hours of Operation

The curtailment of programming hours on main and regular stages will be implemented on evenings preceding weekdays. These stages will have the largest sound systems (accounting for one half of the sound power at the event) and also host the main acts. These are the stages that have the most potential for disturbance. Small, micro and portable categories will continue to be operational throughout the event, however their noise levels will be significantly lower and are not classified as a major disturbance.

2. Sound System Equipment & Configurations

Sound systems will be configured and managed to minimize noise disturbance. Providing such layouts will maximize levels throughout the audience, whilst minimizing the “throw” and directionality problems. As with site layout, the orientation and design of the sound systems can have a significant effect on the sound propagation to the community. Careful design of the sound systems will maximize the containment of sound within the venue. Each system will also comprise of electronic 'limiters' which will be set to control the output of the sound, both in terms of the overall level and also the frequency (the bass beat can be controlled independently).

3. Car Parks and Camping Areas

All persons in the campsites will be advised by security personnel that the playing of music at such levels so as to be ‘audible and discernible’ offsite is not permitted. Vehicles entering the site will be searched by security personnel, and any sound equipment that is identified as having the potential to be used for unlicensed public entertainment will be confiscated.

Security teams will be patrolling the campsites to ensure that this requirement is strictly observed. In the event of a potential breach of noise protocol, the security team will use all reasonable endeavors to halt these activities, unless advised otherwise by local law enforcement agencies. Any such incident will be kept under continual review for the duration of the festival or until the matter is resolved.

4. Local Liaising and Complaint Handling

The following protocol will be put in place to encourage direct communication between local residents and event organizers and ensure that local residents know what to expect:

Any complaints received over the festival will be logged and recorded so preventative measures can be put in place to stop a recurrence of the same complaint. By recording all complaints it will enable staff to see where the complaints are coming from and for what reasons.

A Noise Monitor will be appointed for the duration of the 2015 event, whose sole task will be the management of noise issues arising from the permitted site, on behalf of Symbiosis Gathering.

Throughout the event, the Noise Monitor will liaise closely with local law enforcement agencies. If the Event is made aware of noise disturbances or any possible breach from permitted levels, the source of the disturbance will be identified and sound levels reduced as necessary.

5. Hotline

A dedicated telephone complaints line will be made available for the duration of the sound checks and event. Should complaints of noise arise, at any time during the event, the event’s Noise Monitor will visit the caller to perform a noise level measurement. If sound levels are above the limit, immediate action will be taken to reduce the level from the venue. If troubleshooting the issue leads to tangible solutions such as repositioning speakers and noise barriers, the Noise Monitor will communicate his or her findings to onsite production staff to carry out the changes. If sound levels are within the permitted limit, this will be recorded

and noted as a reference to address for the following year. Communication with onsite production staff will be achieved by two-way radio and telephone, thus a quick response to the problem can be achieved.

A dedicated staff member will be in place to ensure that the complaint hotline is well publicized and manage and log all calls. The caller will be provided with relevant information including event program times.

Noise Monitoring

During the event ongoing noise monitoring will be conducted by a designated Noise Monitor at residential catchment areas to assess noise impacts and ensure that these impacts are addressed in future planning. The Noise Monitor will be on radio and mobile phone contact with Production Managers, Production Assistants and Stage Managers throughout the events. This should ensure that noise measurements in residential areas that exceed the criteria initiate a response at the noise source.

Noise monitoring enables any changing conditions to be responded to expediently in order to ensure the event is successful. Therefore, the Noise Monitor will have unrestricted access within the venue location prior to the event and during the event for the purpose of reference noise level monitoring (prior to the event) and onsite noise monitoring (during the event).

Sound Propagation Tests

Sound propagation tests will be carried out in advance, taking into account all of the physical factors so that sound levels at each stage can be adjusted and set to meet permitted levels.

Sound Monitoring and Control

Both before and during the event, the Symbiosis management team will have full control over the sound levels at all stages. Thus all other parties, including artists, production managers and sound engineers will be instructed to stay within permitted levels.

Noise levels will be monitored continuously throughout the event at each stage. In addition to the control of the overall sound level, frequency adjustments can also be made to reduce the sound at certain low frequencies, often characterized by a 'bass beat'.

Sound Management

The configuration of the sound system and sound system management practices will be assessed and modifications identified to ensure a substantial reduction in off-site noise levels, particularly in low frequency sound, at all future events.

Sound Walls and Barriers

Sound walls will be created when possible to reduce the spreading of sound beyond immediate areas.

Noise Sources and Category Descriptions

The following chart describes event areas categorized by noise impact and decibel levels not to be exceeded during peak, non-peak and regular programming hours. Main and General categories pertain to headlining musical performances and are only operational at peak sound levels. The Small category refers to low-impact performances operational at both peak and non-peak levels. The Micro category pertains to daily ambient activities conducted by attendees and participants with limited personal sound systems (i.e. self-contained battery-operated boom boxes). Sound levels during non-peak times will be consistent with normal park activity.

Category	Capacity	Areas/Type	Sound Levels	Programming Hours
Main	1500 to 5000	Main Stage, Live bands, Headliners, Main Performances	<u>Peak Times only:</u> 95 db-A Slow @150ft Average/ 108 db-C Slow @ 150ft Max	Friday 9:00 AM OPEN Friday 09:00AM until Saturday 02:00 AM Saturday 09:00AM until Sunday 02:00AM Sunday 09:00AM until 11:59AM Monday 12AM CLOSED
General	800 to 1500	DJs, Mainly Driven by Electronic Music	<u>Peak Times only:</u> 95 db-A Slow @150ft Average/ 108 db-C Slow @ 150ft Max	Thursday 12:00PM OPEN Thursday 12:00PM until 11:59PM Friday 09:00AM until Saturday 2:00AM Saturday 9:00AM until Sunday 2:00AM Sunday 9:00AM until 11:59AM Monday 12AM CLOSED
Small	Under 800	Small Electronic & Live Bands, Major Workshops, Acoustic Shows, Portable Art cars or Vessels.	<u>Peak Times:</u> 95 db @150ft Average/ 108 db-C Slow @ 150ft Max <u>Non-Peak Times:</u> 79 db-A Slow @150ft Average/ 92 db-C Slow @ 150ft Max	Thursday 12:00PM OPEN Thursday 12:00PM until Friday 02:00AM Friday 09:00AM until Monday 12:00AM Monday 12AM CLOSED <i>Peak Time Programming Hours:</i> 9AM-12AM (Thursday, Sunday) 9AM-2AM (Friday, Saturday)
Micro	Under 250	Theatrical performances, Workshops, Art installations, Vendor/Food entertainment	85 dB@ 150ft Max	Thursday 12:00PM OPEN Thursday 12:00PM until Monday 12AM Monday 12AM CLOSED

First	Last	Title	Organization	Contact Info	Email
Andrew	Malizia	Professional Engineer, Associate Civil Engineer	Traffic Engineering Division Stanislaus County Public Works	209 525 4126	maliziaa@stancounty.com
Benjamin	Moser	Sergeant	CHP	209-545-7440	BMoser@chp.ca.gov
Mike	Green	Sergeant	CHP	209-545-7440	mgreen@chp.ca.gov
Cheryl	Jackson	Park Manager	Stanislaus County Parks and Recreation	209-601-4477	cajackson@parksrec.org
Dennis	Cordova	Sergeant	Stanislaus County Sheriff's Department	209-652-0812	dcordova@stanislaussheriff.com
Gordon	Rockham	Medical Lead	RockMed	415-646-5474	goldham@healthright360.org
Karen	KoChen	Event Director	Symbiosis Events	415-328-2528	karen@symbiosisevents.com
Mike	Payton	Deputy Fire Marshal	Modesto Regional Fire Authority	209 495-6220	MPayton@modestorfa.org
Marilyn	Smith	Response and Transport Coordinator	Mountain Valley Emergency Medical Services Agency	209-566-7205	msmith@mvemsa.com
Mario	Hernandez	Battalion Chief	Calfire	209-736-2037	mario.hernandez@fire.ca.gov
Michael	Wapnowski	Deputy Chief	Stanislaus Consolidated Fire Protection District	209-896-7391	mwapnowski@scfpd.us
Darren	Gharat	Chief	Stanislaus County Sheriff's Department	209-652-7180	gharatd@stanislaussheriff.com
Richard	Reed	Manager	Oak Valley Hospital District	209-765-0904	rreed@ovhd.com
Seth	Schrenzel	Security Lead	High Rock Security	415-828-2408	seth@highrocksecurity.com
Sharif	Zaweideh	Operations	Symbiosis Events	206-799-5136	sharifz@gmail.com

Sept. 24, 2013

Oakdale, CA 95361

COPY

William O'Brien
Stanislaus County Board of Supervisors
1010 10th Street, Suite 6500
Modesto, CA 95354

Dear Supervisor O'Brien:


I contacted your office on Friday morning, Sept. 20, regarding the Symbiosis Gathering 2013 event. Your assistant, Bev Hatcher confirmed that you and all the other County Supervisors had granted a permit for this event back in April of this year. I told Ms. Hatcher that I lived in a neighborhood in the vicinity of the Symbiosis Gathering and was concerned about the very loud noise that was emanating from the Symbiosis Gathering that Thursday evening, and that went on well into the morning hours of Sept. 20. The low frequency vibrations were loud enough to keep me awake most of the night and morning. As for the impact to the attendees of the Gathering itself, the sound DBA levels that you and your fellow Supervisors approved in the Symbiosis Gathering Permit, well exceed the OSHA (Occupational Health & Safety Administration) and NIOSH (National Institute for Occupational Safety and Health) sound decibel and duration levels that require hearing protection. This type of noise continued throughout the weekend, and continued to disturb the neighborhood that I live in.

Why would you vote to allow such an odd special event to generate noise beyond the normal noise levels and normal time periods (i.e., 7 AM until 10 PM) specified by the Stanislaus County Code (i.e., Section 10.46.060, Parts C & D) ? The Permit you approved allowed these excessive noise levels from 2 PM on Friday, Sept. 20 until 2 AM on Monday, Sept. 23, continuously! You must have known this would be detrimental to your constituents in the immediate surrounding area, yet you chose to disregard their right to privacy and serenity inside their own homes.

It was stated in the Permit that you granted, by the Gathering sponsors that "Symbiosis Events, LLC is an event production company dedicated to creating transformative and inspiring experiences that are based on a deep respect for our community and environment." What a contradiction ! A deep respect for whose community and environment ? It certainly was not for ours in Oakdale.

I hope we have seen the last of the Symbiosis Gatherings. In addition, I will be doing my best to see that after the next set of voter election cycles, we will be blessed with a new set of Stanislaus County Board of Supervisors.

Sincerely,


Spencer Tacke

CC: Supervisors Vito Chiesa, Terry Withrow, Dick Monteith, and Jim DeMartini

2013 SEP 27 A 10:41
BOARD OF SUPERVISORS

LETTERS FROM OUR READERS

Too-loud Symbiosis can stay away

As a resident of the Oakdale area, I hope the Symbiosis Gathering does not return in the future. The excessive noise level was almost continuous from Thursday night until Monday morning. And this was sanctioned by all five of our Stanislaus County Board of Supervisors, who approved a special permit allowing for audio amplification outputs that well exceeded the OSHA sound decibel and duration levels requiring hearing protection, continuously from 2 p.m. Sept. 20 until 2 a.m. Sept. 23!

I find it ironic that the sponsors of this event stated, in the background information they submitted to the Board of Supervisors, that "Symbiosis Events, LLC is an event production company dedicated to creating transformative and inspiring experiences that are based on a deep respect for our community and environment." What a contradiction! A deep respect for whose community and environment? It certainly was not for ours in Oakdale.

SPENCER TACKE
Oakdale

10-1-13



Elias Funez efunez@modbee.com

Egla Didvalyte paints a design on the face of Kristoff Bruneta De Courssou at the Symbiosis gathering.

nice and were respectful of traffic on our roads and area in general. If they come back, maybe as part of their gathering they could plant trees surrounding the

or is
ions,
dical
y and
antial
uding
Stanis-
d with
ce, and
ts for a

to as we
perience
iser, the
stanislaus
who rose

July 15, 2014

Oakdale, CA 95331 BOARD OF SUPERVISORS ✓

2014 JUL 18 A 10 16

COPY

Keith Boggs
Assistant Executive Officer, CEO Office
1010 10th Street, Suite 6800
Modesto, CA 95354

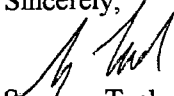
Dear Mr. Boggs:

I read with much trepidation the July 13 article in the Modesto Bee about the possible return of the Symbiosis Gathering at Woodward Reservoir near Oakdale. As one who resides within a 5 mile radius of last year's Symbiosis Events, I must say that I hope it never returns. Attached are copies of my letter to the County Supervisors and my letter to the Modesto Bee from last year, following the Sept. 2013 Symbiosis Gathering. I also lodged a complaint with the Parks and Recreation Dept. (on Sept. 25, 2013) and spoke extensively with Lorie Dangerfield of the Stanislaus County Parks and Recreation Dept. on Sept. 26, 2013 about my concerns. The noise level was atrocious and was almost continuous for three days.

The Modesto Bee article stated that you twice met with upset neighbors last October and March. I was never contacted by you or anyone else from the County to participate in these meetings.

As I stated in my letter to the County Supervisors last September (attached), permitting sound levels beyond those that may damage people's hearing, per OSHA (Occupational Health & Safety Administration) and NIOSH (National Institute for Occupational Safety and Health), as documented in last year's County permit for the Symbiosis Gathering, may be quite a liability. And as for the revenue generated for the County from the last Symbiosis Gathering, some \$75,000 dollars according to the Modesto Bee article, that seems quite small compared to the potential cost to the County to settle any law suits resulting from another Symbiosis Gathering.

Sincerely,



Spencer Tacke

CC: Stanislaus County Supervisors: William O' Brien, Vito Chiesa, Terry Withrow, Dick Monteith, and Jim DeMartini

Department of Parks and Recreation

Special Event Symbiosis

Symbiosis

Parks has received an Exclusive Use request by Symbiosis, LLC to hold a special event at Woodward Reservoir Regional Park

- Symbiosis Gathering and Music Festival
- September 17 – 20, 2015

Symbiosis Con't.

Woodward Reservoir Regional Park

3,500 acres of land for day use, events and camping

2,500 acres of reservoir for water recreation

Symbiosis Cont'd.

WRRP hosts several large outdoor events

Past events include:

- Fireworks Celebration annually
- National Field trials
- Zombie run
- Hobie Cat Regatta

Symbiosis Cont'd.

The Symbiosis Gathering and Music Festival was held at Woodward in September 2013

- Approximately 8,000 people (includes attendees and staff) gathered in the camping environment
- The festival event featured music, art, and workshops with an ecological lifestyle theme

Symbiosis Cont'd.

- People came from around the world to attend
- 5-day event had an estimated \$500,000 positive economic impact

Symbiosis Cont'd.

Local Agencies involved in the planning of the 2013 and the proposed 2015 event include:

- Parks and Recreation
- Sheriff's Office
- California Highway Patrol
- Stanislaus Consolidated Fire
- Mountain Valley Emergency Medical Services

Symbiosis Cont'd.

Following the 2013 event staff held:

- Debriefing meeting with event coordinators and key agencies to discuss any concerns;
- Community meeting with neighbors, City of Oakdale, and event coordinators to discuss any concerns, which were primarily traffic and noise.

Symbiosis Cont'd.

As a result of the public's input, some opportunities for improvement were identified:

Traffic

- An additional “staging” area and traffic monitors were added to ensure that all traffic pulls off the road to maintain clear roads for through traffic and to ensure attendees are not pulling into adjacent property/orchards;

Symbiosis Cont'd.

- Attendees will be ushered off the road into the identified festival entrance gate and routed to the staging area;
- Increased signage will be added to direct attendees.
- In order to reduce vehicle movement during the event, no “ins” and “outs” are allowed for general attendees;

Symbiosis Cont'd.

Noise

To address the public's concerns about noise, Parks contracted with Acoustical Engineering Consultants (AEC)

- Noise Impact Study – February 2014

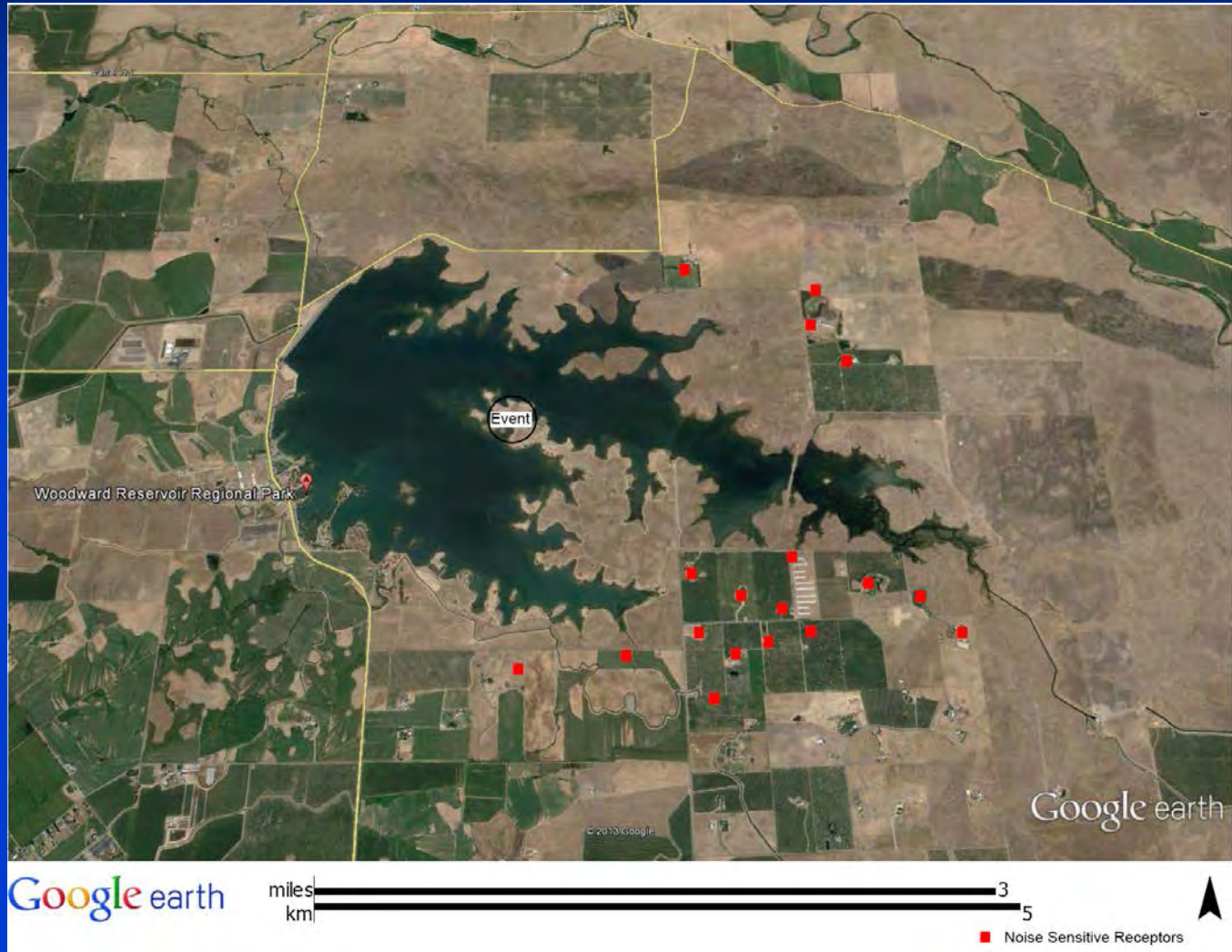
February 2014 Noise Impact Study

- Proposed Noise Limits
 - Daytime hourly L_{eq} of 96 dB(A) and 101 dB(C) at 150' from speakers.
 - Nighttime hourly L_{eq} of 91 dB(A) and 96 dB(C) at 150' from speakers.
- Noise Control Measures
 - Impose sound level limits
 - Event Noise Monitor and Complaint Hotline
 - Acoustical barriers
 - Speaker system configuration and aiming

Stanislaus County Noise Regulations

- Noise Element (includes -5dB music penalty)
 - Day (7am -10pm): Hourly L_{eq} 50 dB(A)
 - Night (10pm - 7am): Hourly L_{eq} 45 dB(A)
- County Code (Noise Ordinance 10.46.050)
 - Day: $L_{50}=45$ dB(A), $L_{25}=50$ dB(A), $L_{08.3}=55$ dB(A)
 - Night: $L_{50}=40$ dB(A), $L_{25}=45$ dB(A), $L_{08.3}=50$ dB(A)
 - 10.46.060: “Sound-Amplifying Equipment and Live Music. No person shall install, use or operate sound-amplifying equipment, or perform, or allowed to be performed, live music unless the sound emanating from the sound-amplifying equipment or live music shall not be audible to the human ear at a distance greater than two hundred feet. To the extent that these requirements conflict with any conditions of approval attached to an underlying land use permit, these requirements shall control.”
- Note: All limits apply to the property line of the receiving noise sensitive land use (i.e. nearest residential property line)

Potential Noise Sensitive Receptors



Sound Test

Based on the recommended decibel levels, Symbiosis agreed to come out to WRRP and conduct a sound test with similar speaker directions, configurations, and decibel levels.

The Sound test was scheduled for July 17, 2014 at 9pm and ended at 12:20am.

Sound Test Cont'd.

- Staff sent a letter to over 6550 property owners within a five mile radius of WRRP;
- Residents advised sound test would be conducted between the dates of July 14 and July 17, 2014;
- Dedicated phone line for residents to call if they heard the sound test.

Sound Test Cont'd.

Prior to the sound test:

- 42 calls from residents;
- Many concerned about the noise from the 2013 event;
- Multiple calls received that residents were hearing sound test prior to the actual test;

Sound Test Cont'd.

Prior to the sound test cont'd:

- Other miscellaneous calls were received expressing other concerns not related;
- Several callers expressed support for the return of Symbiosis.

Sound Test Cont'd.

During the sound test:

9 calls from residents reporting hearing the sound test

- Two were duplicates from the same residence;
- Callers reported hearing sounds on and off, low frequency sounds, hearing sounds when they opened their windows only, and one reported the sound level was tolerable.

Sound Test Cont'd.

During the sound test cont'd:

Staff drove around to several locations around WR property and to several addresses of residents who had complained of the noise during the 2013 event.

- Very faint sounds;
- Decibel readings between 38.2 dB(A) to 45.3 dB(A);

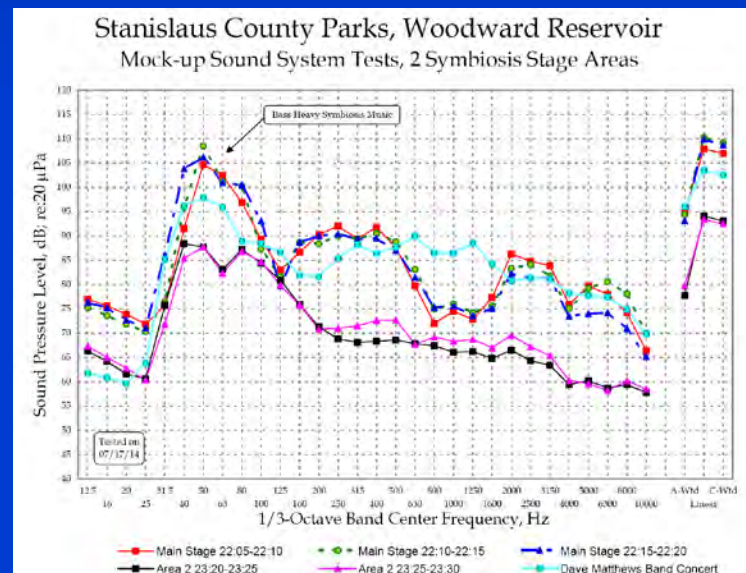
Sound Test Cont'd.

During the sound test cont'd:

- Road traffic, leaves rustling, orchard sprinklers, and crickets were the predominant sounds heard.
- Contracted with AEC to conduct decibel level readings during the sound test.

July 2014 Symbiosis Mock-up

- Two speaker setups: 1) traditional stage with left/right towers, and 2) speakers at four corners of a square aimed toward the center
- Speakers at first stage were aimed toward the northeast. No acoustical barriers were used. Music was more “bass” heavy than anticipated.



- Combined background and speaker sound levels at worst case residential location along Dorsey Road were approximately 39-45 dB(A).

Proposed Event Limits (Revised)

- New Proposed Noise Limits for Traditional Stage
 - Daytime hourly L_{eq} of 95 dB(A) and 108 dB(C) at 150' from speakers.
 - Nighttime hourly L_{eq} of 91 dB(A) and 103 dB(C) at 150' from speakers.
- New Proposed Noise Limits for Four Corner Speaker Setup
 - Hourly L_{eq} of 79 dB(A) and 92 dB(C) at 150' from the center of the square created by the four corner speaker towers.
 - The levels used during the mock-up of the four corner speaker setup were plenty loud enough for Symbiosis organizers (103 dB(A) measured in the center). There is no need to increase the daytime limits for this area.

Proposed Event Limits (Revised)

- Noise Control Measures
 - Impose sound level limits
 - Event Noise Monitor and Complaint Hotline
 - Acoustical barriers
 - Speaker system configuration and aiming
 - Re-evaluate limits for 2015

Sound Test Cont'd.

In the days following the sound test:

9 calls were received from residents

- Several callers thanked the County for conducting the sound test;
- Several callers reported they either did not hear the sound test or stated they felt the levels were significantly lower than the 2013 event;

Sound Test Cont'd.

Following the sound test cont'd:

- One caller reported they felt the levels were reasonable;
- One caller reported hearing the sound test several days after the testing was completed;
- Several callers expressed that they had heard the sound test and stated they did not want the event coming back;

Sound Test Cont'd.

Following the sound test cont'd:

- One caller stated they enjoyed the 2013 music festival and felt the people responsible had been very thoughtful as they reside very close to the venue and were not only invited to attend at no cost and were treated very nicely.

Symbiosis Cont'd.

Noise – Based on feedback we received

- Decibel levels are reduced during these times:

Thursday midnight to Friday 9am

Friday 2am – Saturday 9am

Sunday midnight to Monday 9am

- Stages and sound systems redirected to avoid the spreading of sound;

Symbiosis Cont'd.

- Noise monitoring ongoing during the event;
- Noise monitor to work closely with production staff and law enforcement;
- Sound walls/barrier systems will be used to reduce the spreading of sound;
- Introduction of a “hotline” phone number to facilitate communication with residents.

Environmental Review

California Environmental Quality Act (CEQA) guidelines include a number of project classes that are considered exempt:

Class 23 consists of the normal operations of existing facilities for public gatherings for which the facilities were designed, where there is a past history of the facility being used for the same or similar kind of purpose.

Environmental Review Cont'd.

- Normal operations for WRRP include both individual recreational activities such as camping and water sports and large-scale public events that occur throughout the year;
- This proposed event involves neither the presence of higher attendance, greater traffic, or the generation of more noise at the facility than prior events;

Environmental Review Cont'd.

- Proposed activity would occur in a lightly populated agricultural area on property that is set aside specifically for recreational activities of this sort;
- The event would occur in an area of the facility which will not be adversely impacted by the activity.

Fees

Option 1 – Body to Water Contact
Restrictions = Flat fee of \$75,000

Option 2 – No Water Restrictions

A guaranteed minimum of \$75,000 and \$5
per person per day assessed thereafter

Additional charges include exclusive use
fees, staff costs, and vendor fees

Staff Recommendations:

1. Approve the filing of a Notice of Exemption finding that the proposed event is exempt under the provisions of the California Environmental Quality Act pursuant to State guidelines section 15323.

Staff Recommendations Con't.

2. Approve the Exclusive Use Agreement/Permit with Symbiosis Events, LLC, to hold a Symbiosis Gathering and Music Festival, in the back area of Woodward Reservoir Regional Park from Thursday, September 17, 2015, through Sunday, September 20, 2015.

Staff Recommendations Con't.

3. Authorize the Director of Parks and Recreation, or designee, to direct Symbiosis Events, LLC, to adhere to the requirements set forth as outlined in the Temporary Exclusive Use Event Agreement/Permit.

Staff Recommendations Cont'd.

4. Authorize the Director of Parks and Recreation to negotiate and approve future events with the Symbiosis event promoters.

Questions?