

THE BOARD OF SUPERVISORS OF THE COUNTY OF STANISLAUS
ACTION AGENDA SUMMARY

DEPT: Public Works

BOARD AGENDA # C-6

Urgent Routine

AGENDA DATE February 25, 2014

CEO Concurs with Recommendation YES NO
(Information Attached)

4/5 Vote Required YES NO

SUBJECT:

Approval to Adopt a Resolution of Support for a Regional Transportation Tax Measure for the Stanislaus Region and, Approval of Public Works' Expenditure Plan for the Proposed Projects in the Unincorporated Areas of Stanislaus County Intended for Funding by the County-wide Transportation Sales Tax Program

STAFF RECOMMENDATIONS:

1. Adopt a Resolution of Support for a Regional Transportation Tax Measure for the Stanislaus Region.
2. Approve Public Works' expenditure plan for the proposed County-wide Transportation Sales Tax Program for projects in the unincorporated areas of Stanislaus County.
3. Authorize the Director of Public Works to submit the expenditure plan to the Stanislaus Council of Governments (StanCOG) for inclusion in the region's Final Expenditure Plan.

FISCAL IMPACT:

Initial estimates indicate that a 25-year, one-half cent countywide transportation sales tax program would generate approximately \$970 million for transportation. This includes 47% for regional capital projects (\$455.9 million), 47% for local improvements and maintenance projects (\$455.9 million), and 6% for regional rail, specialized transit, bicycles and pedestrians (\$58.2 million). Stanislaus County's portion of the local share is estimated at \$123 million (\$122.4 million for local streets and roads and \$0.8 million for bicycles and pedestrians)

BOARD ACTION AS FOLLOWS:

No. 2014-87

On motion of Supervisor Chiesa, Seconded by Supervisor Monteith

and approved by the following vote,

Ayes: Supervisors: O'Brien, Chiesa, Withrow, Monteith, and Chairman De Martini

Noes: Supervisors: None

Excused or Absent: Supervisors: None

Abstaining: Supervisor: None

1) X Approved as recommended

2) _____ Denied

3) _____ Approved as amended

4) _____ Other:

MOTION:



ATTEST: CHRISTINE FERRARO TALLMAN, Clerk

File No.

Approval to Adopt a Resolution of Support for a Regional Transportation Tax Measure for the Stanislaus Region and, Approval of Public Works' Expenditure Plan for the Proposed Projects in the Unincorporated Areas of Stanislaus County Intended for Funding by the County-wide Transportation Sales Tax Program

DISCUSSION:

On January 15th the Stanislaus Council of Governments' Policy Board adopted a transportation expenditure plan framework for a regional transportation tax measure. A part of this action was to circulate this expenditure plan framework to all nine City Councils and the Board of Supervisors for their consideration of a resolution of support for a regional transportation tax measure.

This framework was developed during two technical working group meetings, held on January 6th and January 8th with the Management and Finance Committee members. The Management and Finance Committee voted unanimously to recommend the StanCOG Policy Board Adopt the Proposed Transportation Plan Framework for a Regional Transportation Tax Measure for the Stanislaus Region. The proposed 2014 Sales Tax Expenditure Plan and Funding Distribution Methodology are described below.

2014 Tax Expenditure Plan Breakdown

- Half Cent Transportation Sales Tax Duration 25 Years
- Projected Sales Tax to be collected \$970.0 million
- 2014 Transportation Expenditure Plan Programs (in millions)
 - Local Street and Road Program (47%) \$455.9 million
 - Major / Regional Corridors (47%) \$455.9 million
 - Regional Rail, Mobility Management, (6%) \$ 58.2 million
Bicycle and Pedestrian
- StanCOG, as the designated Transportation Authority for the Tax Measure, can collect up to 1% of the collected sales tax for administration of the Program.

The sales tax measure projects will include two types of roadway projects; local street and road projects from the local jurisdictions and major corridor projects proposed as follows:

- North Corridor: North County Corridor - Current limits from State Route (SR) 108/McHenry Ave. to SR 108/120, east of the City of Oakdale
- Central Corridor: SR 132 - Widening from the San Joaquin County Line to SR 99, Operational Improvements from SR 99 to the City of Waterford, and Connectivity Improvements at SR 132 and SR 99.
- South Corridor: South County Corridor I West Main - Current limits from SR 99 in the City of Turlock to 1-5 in the City of Patterson.

Approval to Adopt a Resolution of Support for a Regional Transportation Tax Measure for the Stanislaus Region and, Approval of Public Works' Expenditure Plan for the Proposed Projects in the Unincorporated Areas of Stanislaus County Intended for Funding by the County-wide Transportation Sales Tax Program

The funding distribution for local projects is based on 100% of Taxable Sales as reported for Fiscal Year 2012-2013 with a floor of \$250,000. The tentative schedule is to have an approved regional plan for the 2014 November Ballot. Below is a detailed tentative schedule.

Month 1 (January 2014)

- Develop and Finalize Tax Measure Financial Expenditure Plan
- Policy Board approves Tax Measure Financial Expenditure Plan
- Begin circulation to obtain City Council and Board of Supervisors support of the Tax Measure Financial Expenditure Plan

Month 2 (February 2014)

- Continue circulation to obtain City Council and BOS Resolution of Support of Financial Expenditure Plan

Month 3 (March)

- StanCOG Policy Board adopts Tax Measure Financial Expenditure Plan
- Release Request for Qualifications (RFQ)/Request for Proposal (RFP) for Expenditure Plan Programmatic Supplemental Environmental Impact Report (EIR) and Public Education Outreach

Month 4 (April 2014)

- Consultant begins Expenditure Plan Programmatic Supplemental EIR (If based on 2014 RTP)
- Consultant begins Public Education Outreach Program (April through July)
- Develop Transportation Sales Tax Ordinance

Month 5 (May 2014)

- Consultant provides draft EIR for review

Month 6 (June 2014)

- StanCOG Policy Board has the first reading of the Transportation Sales Tax Ordinance
- Circulation of Expenditure Plan to obtain City Council and Board of Supervisor Resolution of Approval of Financial Expenditure Plan

Month 7 (July 2014)

- Finalize Expenditure Plan Supplement EIR
- StanCOG Policy Board certifies Expenditure Plan EIR

Approval to Adopt a Resolution of Support for a Regional Transportation Tax Measure for the Stanislaus Region and, Approval of Public Works' Expenditure Plan for the Proposed Projects in the Unincorporated Areas of Stanislaus County Intended for Funding by the County-wide Transportation Sales Tax Program

Month 7 and 8 (July / August 2014)

- StanCOG Policy Board adopts and forwards the Transportation Sales Tax Ordinance to the Stanislaus County Board of Supervisors to be placed on a voter ballot
- Stanislaus County Board of Supervisors places the Transportation Sales Tax Ordinance on a voter ballot
- Form a Political Action Committee (PAC)

The local transportation funding apportionment for Stanislaus County will be divided into two categories: bridges and roadway maintenance. Stanislaus County anticipates using funding from the sales tax measure as a local match to leverage Federal and State transportation funding. The following table is a brief overview of this proposed funding strategy and the anticipated local match share for each category.

| Program | Sales Tax Allocation | Sales Tax Funding | Proposed Match | Available for Programming |
|---------------------|-----------------------------|--------------------------|-----------------------|----------------------------------|
| Bridges | 20% | \$ 25,000,000 | 12% | \$210,000,000 |
| Roadway Maintenance | 80% | \$ 97,400,000 | 100% | \$ 97,400,000 |
| TOTAL | 100% | \$122,400,000 | | \$307,400,000 |

Bridge Program - \$25,000,000

Stanislaus County currently owns and maintains more than 230 bridges, with 21 bridges in need of seismic retrofit or replacement. Over the past five years all of these bridges in need of repair/replacement have been programmed and are in a phase of project development. As these projects become construction ready there will be a need for a sizable local match to deliver the projects through completion. The estimated cost to deliver these projects is approximately \$210,000,000. The local match for this estimated total cost is \$25,000,000. The bridges currently in project development are:

- Cooperstown Road Bridge over Gallup Creek
- Cooperstown Road Bridge over Rydberg Creek
- Crabtree Road Bridge over Dry Creek
- Crows Landing Road Bridge over San Joaquin River
- Geer Road Bridge over Tuolumne River
- Gilbert Road Bridge over TID Canal

Approval to Adopt a Resolution of Support for a Regional Transportation Tax Measure for the Stanislaus Region and, Approval of Public Works' Expenditure Plan for the Proposed Projects in the Unincorporated Areas of Stanislaus County Intended for Funding by the County-wide Transportation Sales Tax Program

- Hickman Road Bridge over Tuolumne River
- Kilburn Road Bridge over Orestimba Creek
- Las Palmas Road Bridge over San Joaquin River
- McHenry Avenue Bridge over Stanislaus River
- Milton Road Bridge over Rock Creek
- Pete Miller Road Bridge over Delta Mendota Canal
- Pleasant Valley Road Bridge over South San Joaquin Main Canal
- River Road Bridge over San Joaquin River
- Santa Fe Bridge over Tuolumne River
- Seventh Street Bridge over Tuolumne River
- Shiells Road Bridge over CCID Canal
- Sonora Road Bridge over Martell Creek
- St. Francis Avenue Bridge over MID Lateral
- Tegner Road Bridge over TID Canal
- Tim Bell Bridge over Dry Creek

Roadway Maintenance Program - \$97,400,000

Stanislaus County maintains more than 1,500 miles of roadway. This total roadway mileage includes approximately 585 miles of major collectors, 675 miles of minor rural roadways, and 260 miles of urban roadways. Based upon the proposed allocation, the roadway maintenance program will be funded at an approximate level of \$3.9 million per year. The table below describes this funding strategy. This roadway maintenance will be in addition to the existing effort put toward roadway resurfacing and maintenance. For the past 7 years Public Works has averaged a little more than 100 miles per year of re-surfacing. Prioritization of roadways will be based upon the Department's Pavement Management System. Roadway resurfacing for the 25-year program life equals 2,050 miles of the combined roadway types.

| Roadway Type | Funding Level / Year | Miles Resurfaced / Year |
|----------------------|----------------------|-------------------------|
| Major Collector | \$1,896,000 | 12 |
| Minor Rural | \$1,500,000 | 50 |
| Unincorporated Urban | \$ 500,000 | 20 |
| Total | \$3,896,000 | 82 |

Approval to Adopt a Resolution of Support for a Regional Transportation Tax Measure for the Stanislaus Region and, Approval of Public Works' Expenditure Plan for the Proposed Projects in the Unincorporated Areas of Stanislaus County Intended for Funding by the County-wide Transportation Sales Tax Program

Bicycles and Pedestrians - \$800,000

Based upon the proposed allocation, the bicycle and pedestrian program will be funded at an approximate level of \$32,000 per year. It is anticipated that this funding will be added to our non-motorized budget, which currently is approximately \$65,000 per year. This budget will continue to be used to expand bicycle and pedestrian routes.

Stanislaus County roadways and bridges are severely under-funded, and as demonstrated by the projects defined above, the proposed sales tax measure would play a critical role in helping to address this deficit. Upon Board approval, Stanislaus County's Expenditure Plan will be submitted to the Stanislaus Council of Governments (Stan COG) for inclusion in the Regional Expenditure Plan.

POLICY ISSUES:

The recommended actions are consistent with the Board's priorities of a Well-Planned Infrastructure System and Effective Partnerships by supporting a regional plan to ensure adequate transportation funding.

STAFFING IMPACTS:

There are no staffing impacts associated with this item.

THE BOARD OF SUPERVISORS OF THE COUNTY OF STANISLAUS
STATE OF CALIFORNIA

Date: February 25, 2014

2014-87

On motion of Supervisor Chiesa Seconded by Supervisor Monteith
and approved by the following vote,

Ayes: Supervisors: O'Brien, Chiesa, Withrow, Monteith, and Chairman De Martini

Noes: Supervisors: None

Excused or Absent: Supervisors: None

Abstaining: Supervisor: None

THE FOLLOWING RESOLUTION WAS ADOPTED: Item # C-6

**A RESOLUTION SUPPORTING THE STANISLAUS COUNTY 2014 REGIONAL
TRANSPORTATION TAX MEASURE FINANCIAL EXPENDITURE PLAN**

Whereas, the Board of Supervisors of Stanislaus County through its adopted General Plan seeks to provide for the transportation and infrastructure needs of Stanislaus County; and

Whereas, the Board of Supervisors having adopted a Capital Improvement Plan, has identified those specific transportation capital infrastructure needs within Stanislaus County; and

Whereas, the Board of Supervisors seeks to provide for such improvements in the most fiscally responsible manner for the residents of Stanislaus County by securing all available sources of funding; and

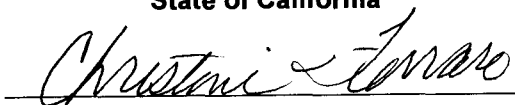
Whereas, there is clear evidence that 'self help' jurisdictions that generate local funding are better able to secure federal and state grants to fund transportation improvements; and

Whereas, the proposed 2014 Regional Transportation Tax Measure Financial Expenditure Plan ("Expenditure Plan") will provide a source of funds that creates a self help status for the Stanislaus County Region; and

Whereas, Stanislaus County will benefit by receiving a proportionate share of the measure's funds for specified projects in accordance with the Expenditure Plan, and residents of Stanislaus County will further benefit from improvements made to streets and roads in the Stanislaus County Region.

Now, therefore, be it resolved by the Board of Supervisors that in accordance with its established goals and objectives to provide, among other things, for better roads and safer streets, to support the long term well being and economic benefits of Stanislaus County does hereby endorse and support the Expenditure Plan.

ATTEST: **CHRISTINE FERRARO TALLMAN, Clerk**
Stanislaus County Board of Supervisors,
State of California



File No.

STANISLAUS COUNTY REGIONAL TRANSPORTATION SALES TAX EXPENDITURE PLAN

Stanislaus County Board of Supervisors

February 25, 2014



City of
Turlock



TRANSPORTATION NEEDS



TRANSPORTATION SALES TAX

WHAT IS IT?

A Countywide ½ cent sales tax to improve transportation in our region

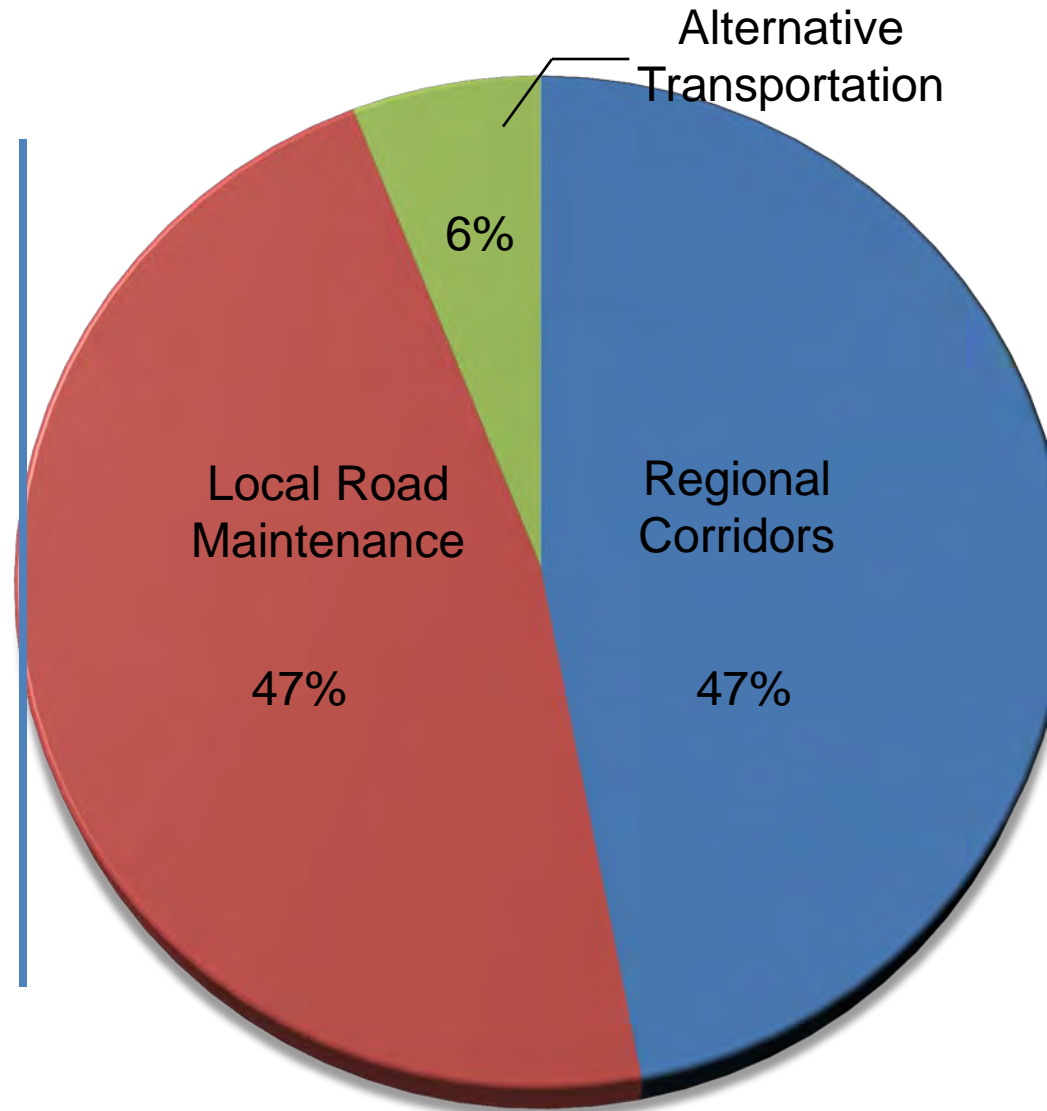
WHAT WILL YOUR ½ CENT DO?

- ***Establish a reliable local funding source***
- ***Provide ability to leverage State and Federal dollars***
- ***Improve goods movement, relieve congestion, strengthen economy, and increase safety and improve health***

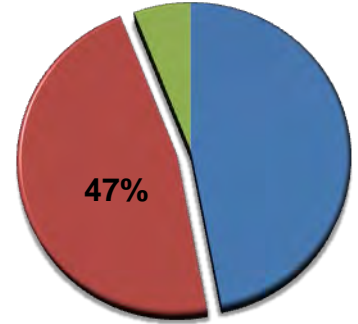


EXPENDITURE PLAN FRAMEWORK

- 25-year measure
- Projected revenue: **\$970 million**
- Citizens Oversight Committee to oversee expenditures
- StanCOG is the Transportation Authority



LOCAL ROAD MAINTENANCE



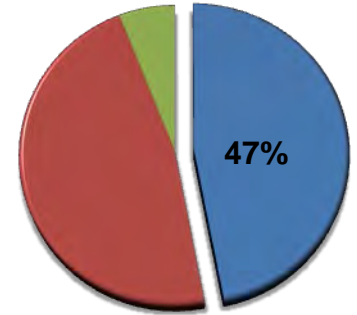
Details

- Nearly \$456 million, or \$18.2 million per year
- Provided directly to local jurisdictions for roadway maintenance
- **Stanislaus County receives \$5.1 M / year**

What you get!



REGIONAL CORRIDORS

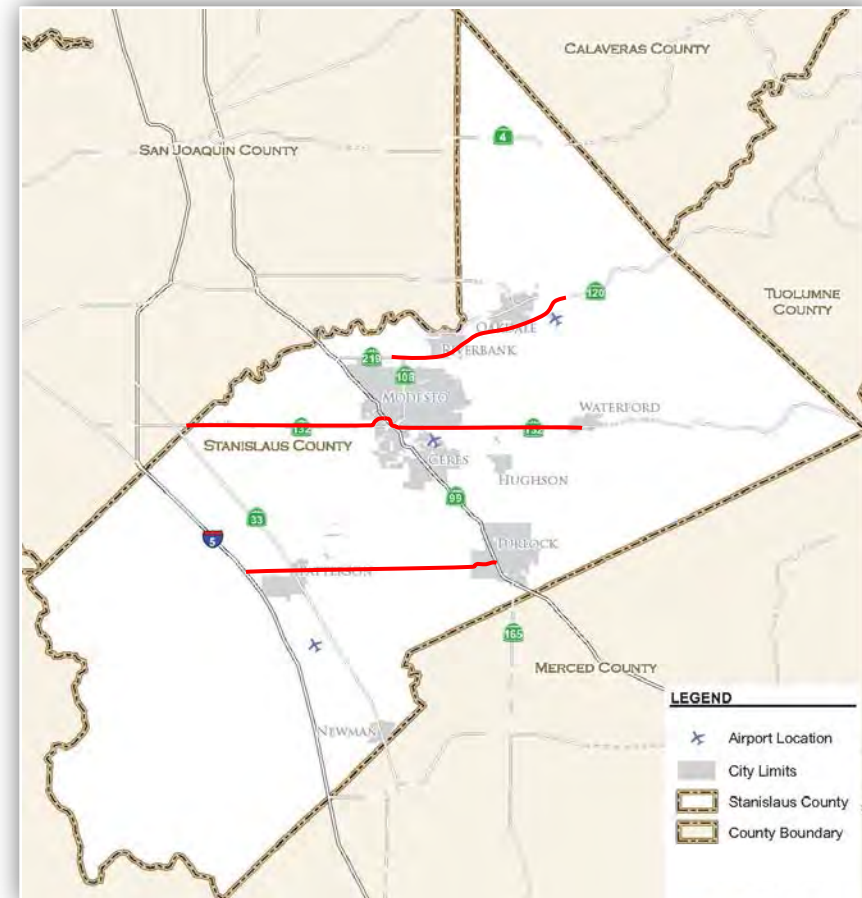


Details

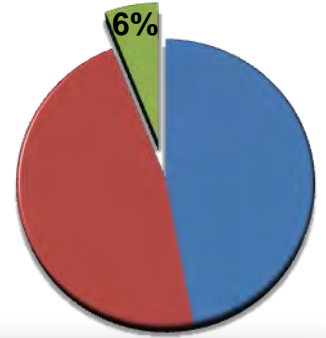
Nearly \$456 million for projects that relieve congestion and promote goods movement and economic vitality

What you get!

- North County Corridor
- Central Corridor (State Route 132)
- South County Corridor



TRANSPORTATION ALTERNATIVES

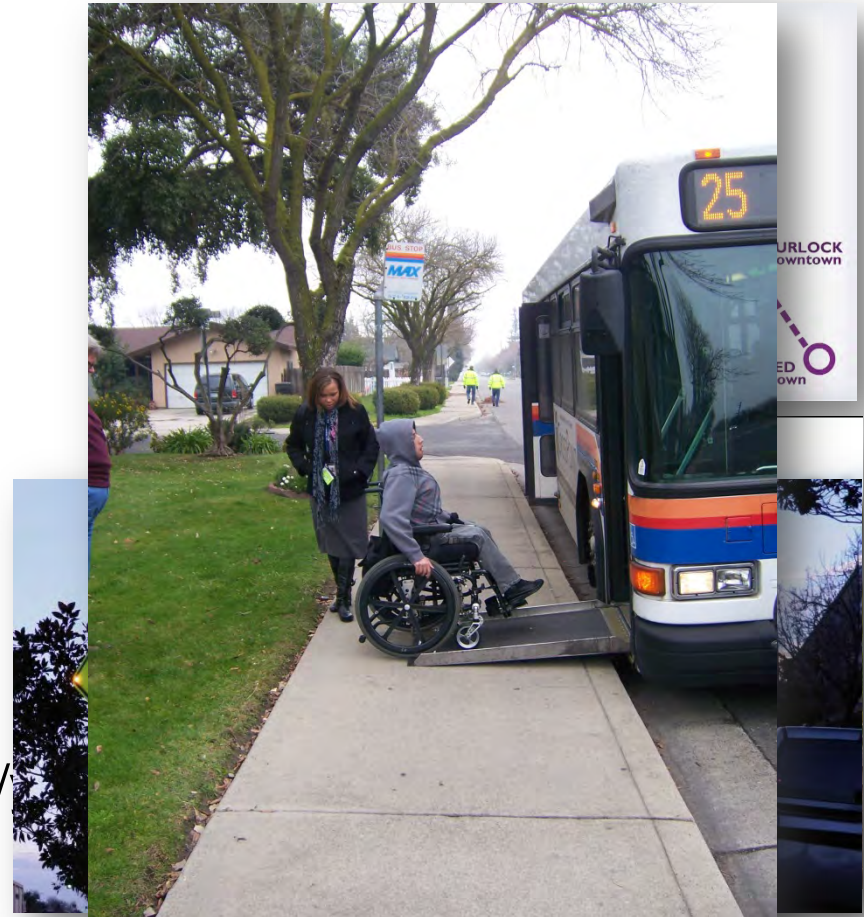


Details

Nearly \$59 million, or \$2.3 million per year

What you get!

- Regional Rail (80%, \$1.8 M/yr)
- Bikes and Peds (5%, \$116 k/yr)
- Mobility Management (15%, \$349 k/yr)



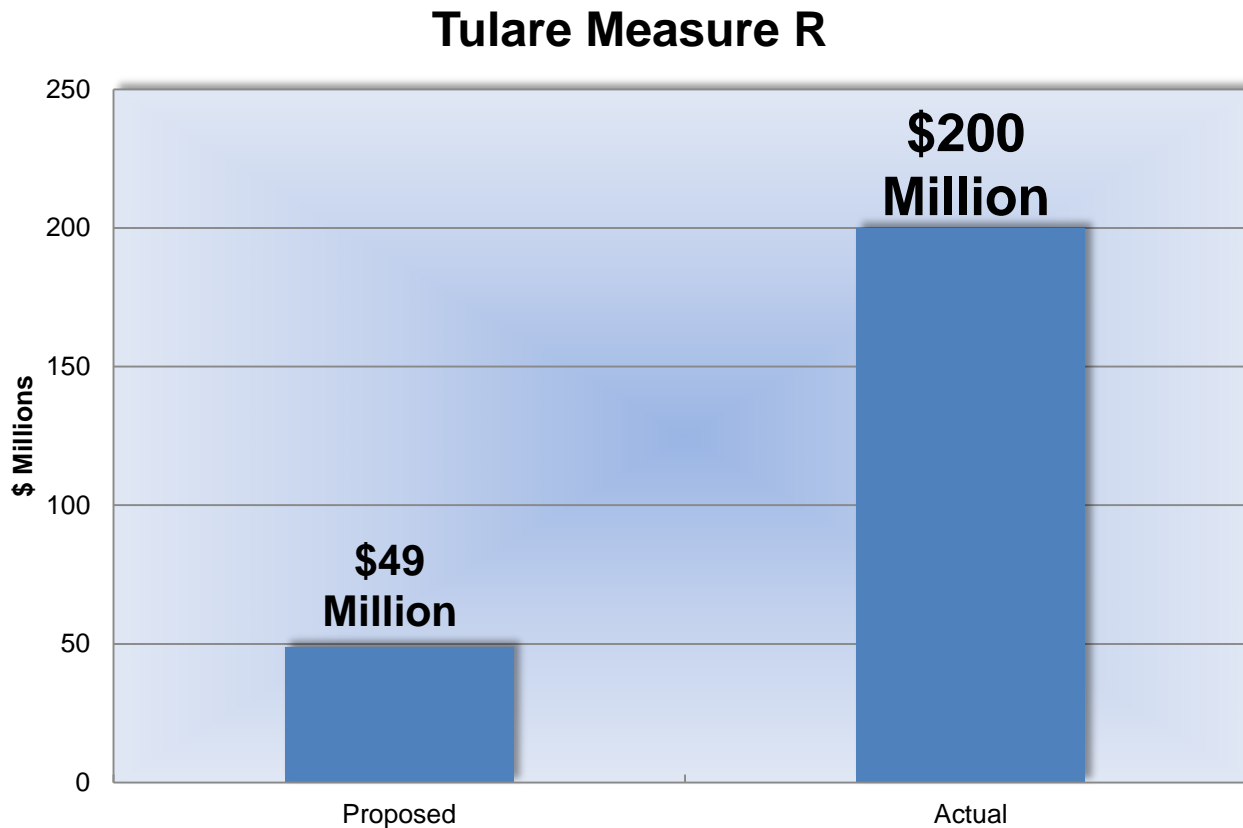
URLOCK
owntown

ED
own

WHY DO WE NEED A MEASURE?

LEVERAGING

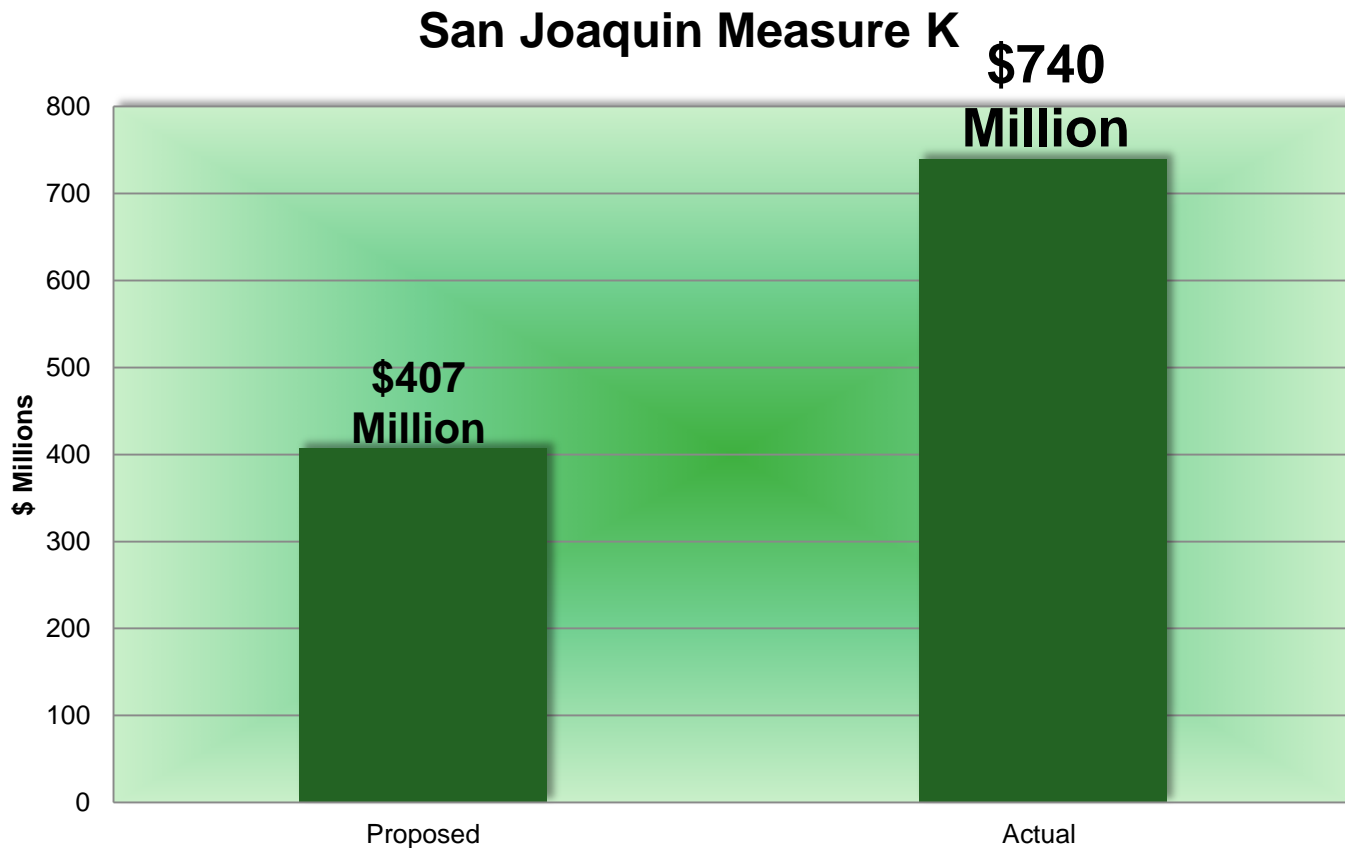
- Tulare County, Measure R



WHY DO WE NEED A MEASURE?

LEVERAGING

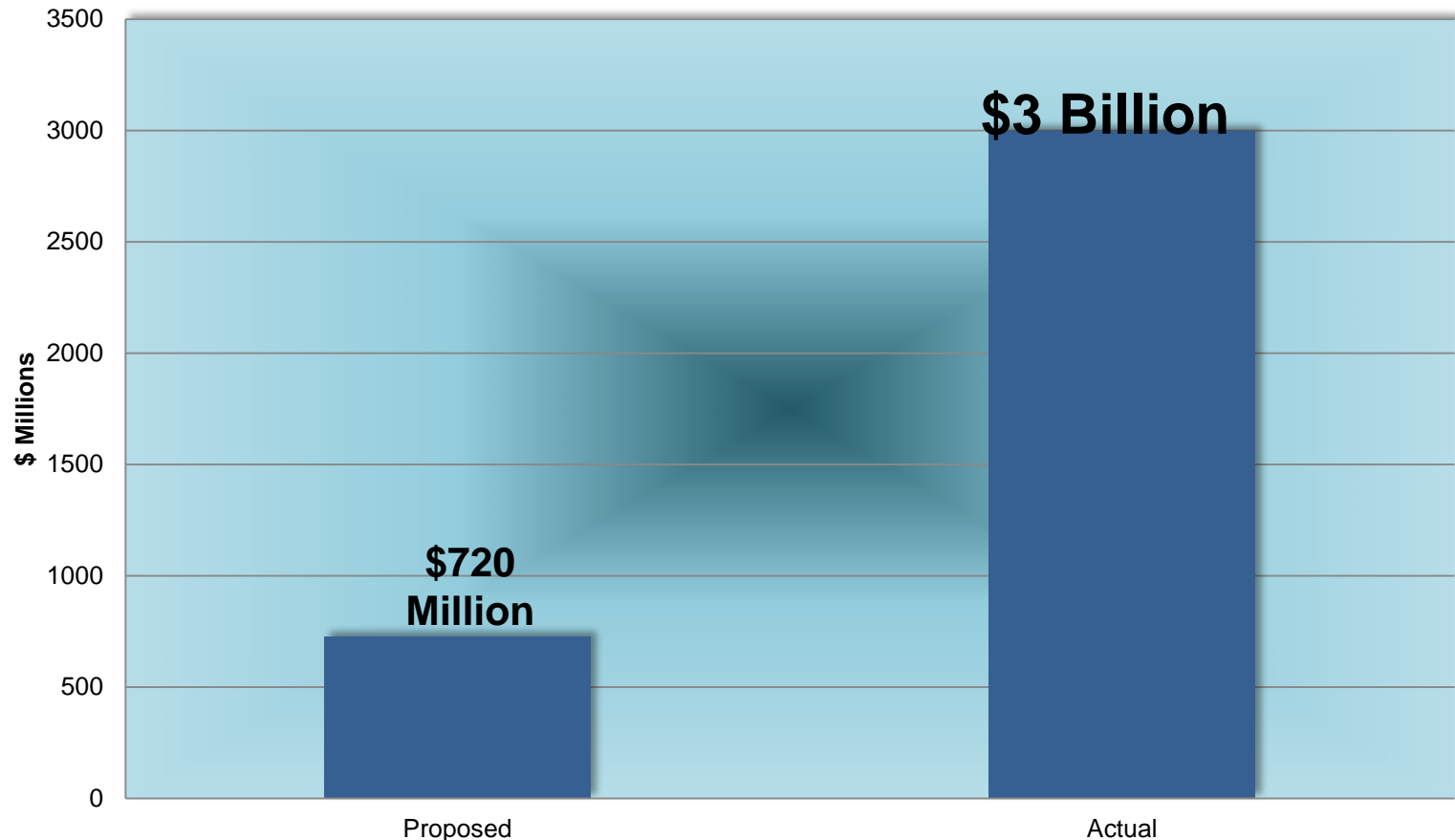
- San Joaquin County, Measure K



WHY DO WE NEED A MEASURE?

LEVERAGING

- Alameda County, Measure B1



CONCLUSIONS

81% of California's population currently pays a transportation sales tax

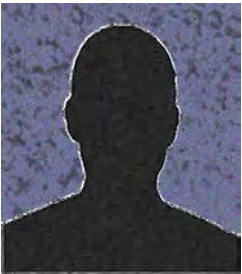
A tax measure will:

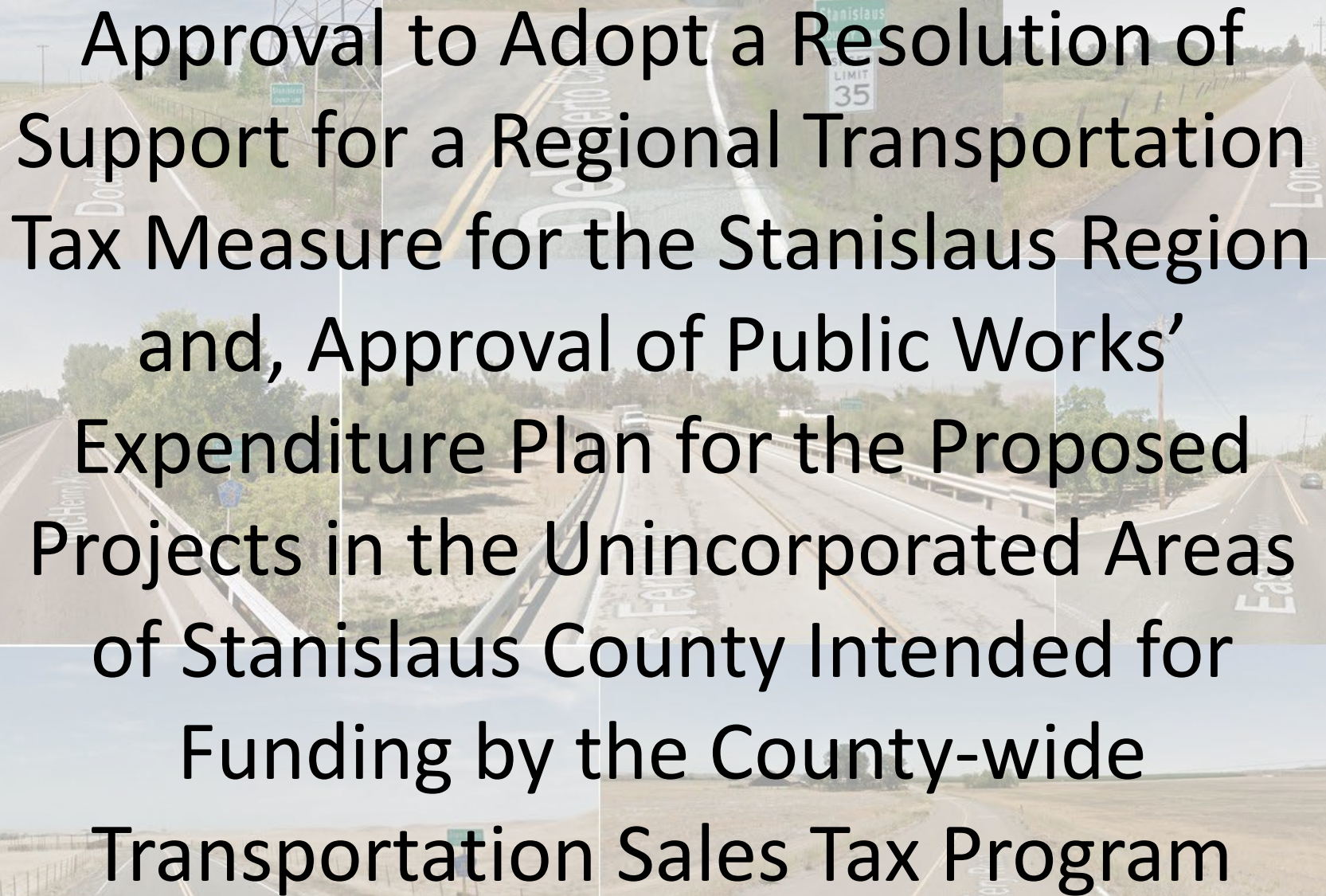
- Relieve congestion
- Improve connectivity and goods movement
- Improve our quality of life
- Enhance economic vitality of the region and create jobs within the county

 Self-Help
Counties Coalition
Members

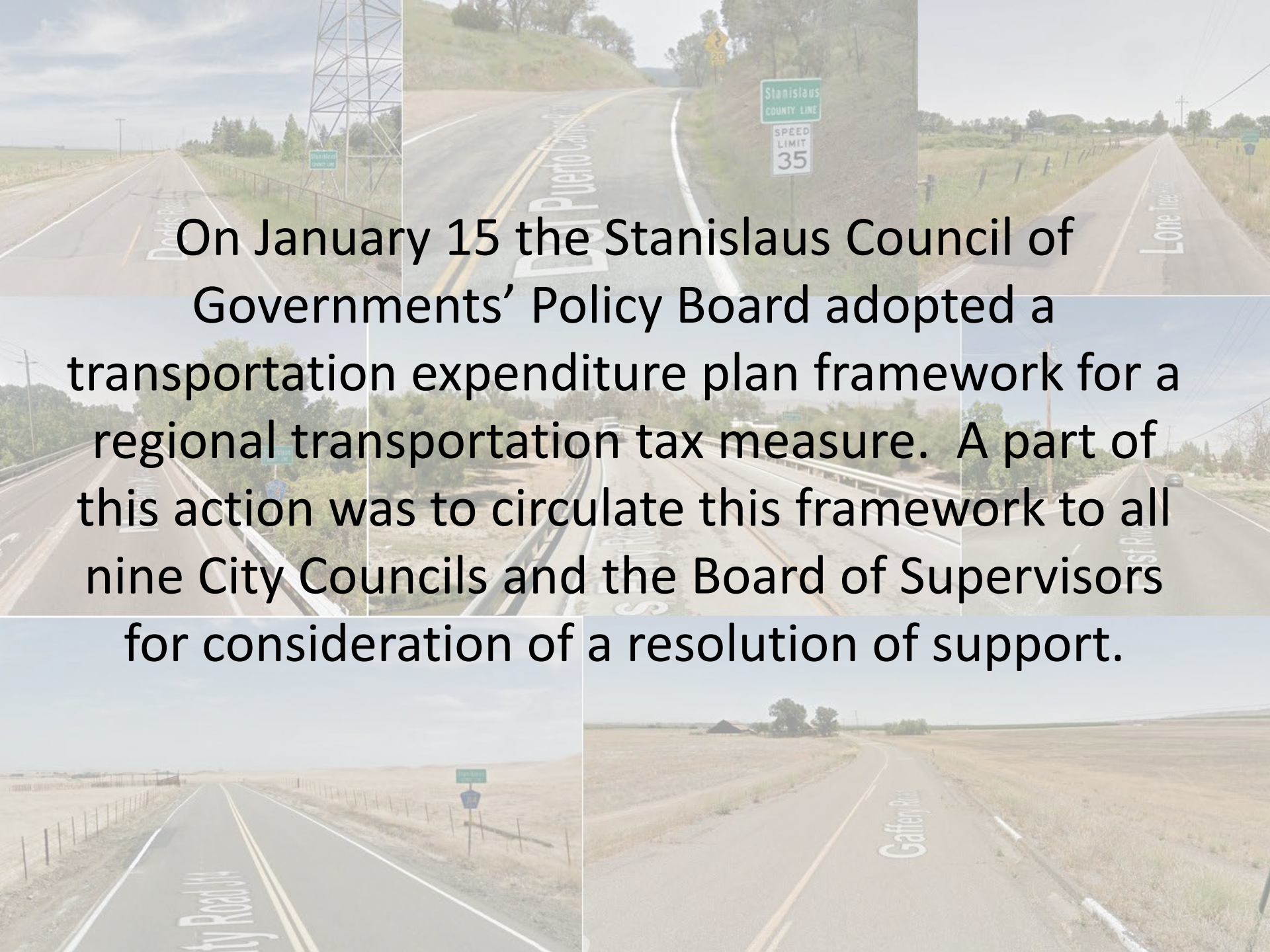


Stanislaus County Regional Transportation Sales Tax Expenditure Plan





Approval to Adopt a Resolution of Support for a Regional Transportation Tax Measure for the Stanislaus Region and, Approval of Public Works' Expenditure Plan for the Proposed Projects in the Unincorporated Areas of Stanislaus County Intended for Funding by the County-wide Transportation Sales Tax Program



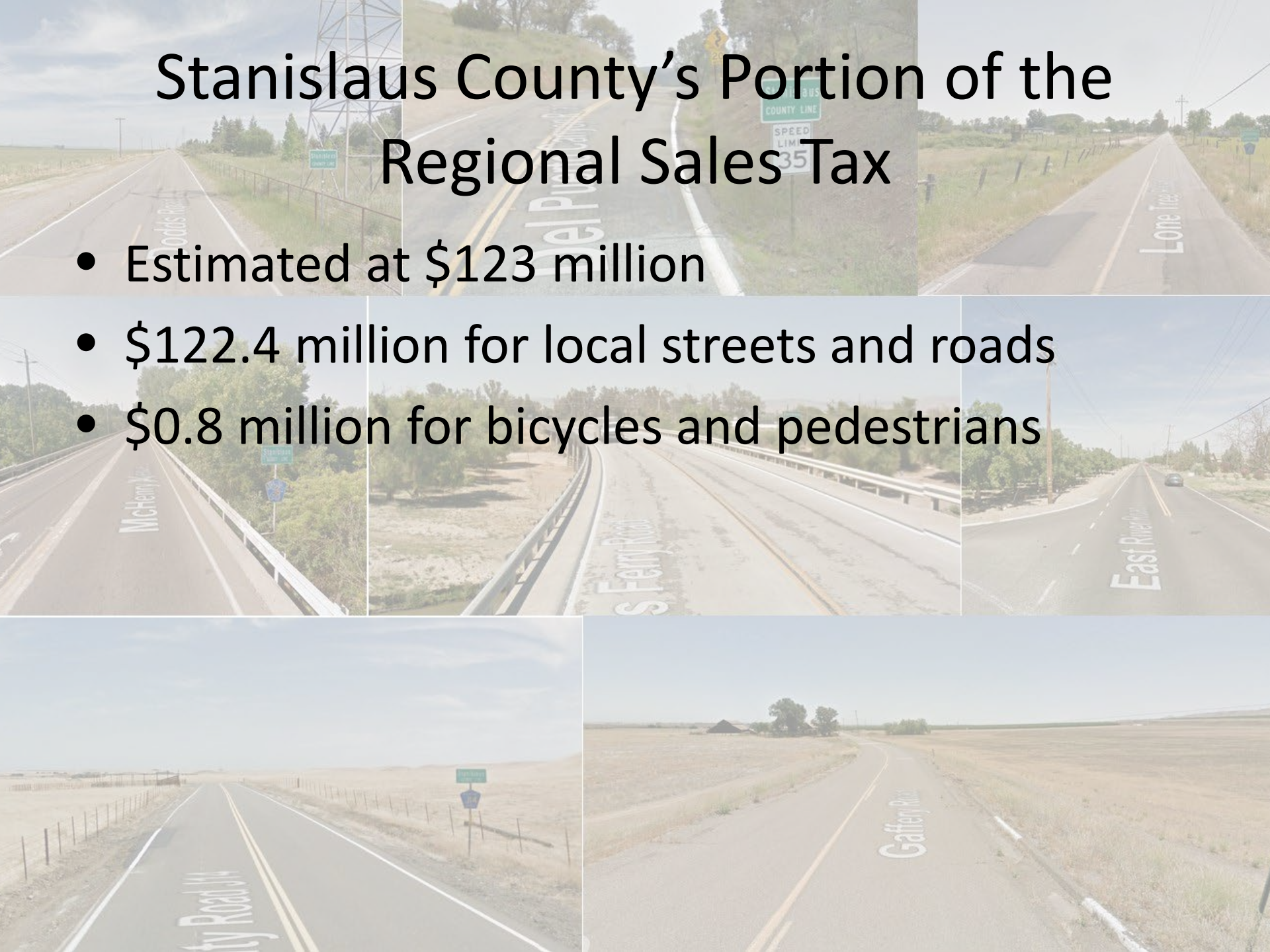
On January 15 the Stanislaus Council of Governments' Policy Board adopted a transportation expenditure plan framework for a regional transportation tax measure. A part of this action was to circulate this framework to all nine City Councils and the Board of Supervisors for consideration of a resolution of support.

2014 Tax Expenditure Plan Breakdown

- 25 year term
- Projected Revenue at \$970 million
- 47% toward Local Streets and Roads Program
- 47% toward Major / Regional Corridors
- 6% toward Regional Rail, Mobility Management, Bicycle and Pedestrian

Stanislaus County's Portion of the Regional Sales Tax

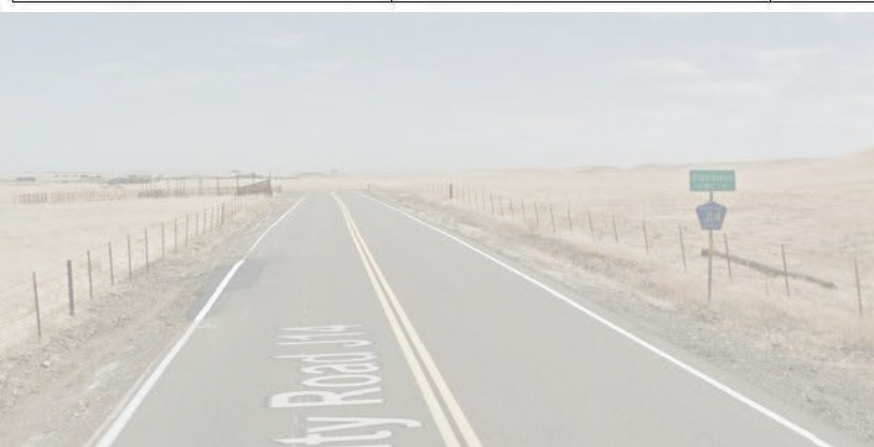
- Estimated at \$123 million
- \$122.4 million for local streets and roads
- \$0.8 million for bicycles and pedestrians



Local Streets and Roads



| Program | Sales Tax Allocation | Sales Tax Funding | Proposed Match | Available for Programming |
|---------------------|----------------------|----------------------|----------------|---------------------------|
| Bridges | 20% | \$ 25,000,000 | 12% | \$210,000,000 |
| Roadway Maintenance | 80% | \$ 97,400,000 | 100% | \$ 97,400,000 |
| TOTAL | 100% | \$122,400,000 | | \$307,400,000 |



Bridge Program List

1. Cooperstown Road Bridge over Gallup Creek
2. Cooperstown Road Bridge over Rydburg Creek
3. Crabtree Road Bridge over Dry Creek
4. Crows Landing Road Bridge over San Joaquin River
5. Geer Road Bridge over Tuolumne River
6. Gilbert Road Bridge over TID Canal
7. Hickman Road Bridge over Tuolumne River
8. Kilburn Road Bridge over Orestimba Creek
9. Las Palmas Road Bridge over San Joaquin River
10. McHenry Avenue Bridge over Stanislaus River
11. Milton Road Bridge over Rock Creek
12. Pete Miller Road Bridge over Delta Mendota Canal
13. Pleasant Valley Road Bridge over South San Joaquin Main Canal
14. River Road Bridge over San Joaquin River
15. Santa Fe Bridge over Tuolumne River
16. Seventh Street Bridge over Tuolumne River
17. Shiells Road Bridge over CCID Canal
18. Sonora Road Bridge over Martell Creek
19. St. Francis Avenue Bridge over MID Lateral
20. Tegner Road Bridge over TID Canal
21. Tim Bell Bridge over Dry Creek

Roadway Maintenance Plan

| Roadway Type | Funding Level / Year | Miles Resurfaced / Year |
|----------------------|----------------------|-------------------------|
| Major Collector | \$1,896,000 | 12 |
| Minor Rural | \$1,500,000 | 50 |
| Unincorporated Urban | \$ 500,000 | 20 |
| Total | \$3,896,000 | 82 |

The proposed roadway maintenance is in addition to current maintenance efforts. The current maintenance funding is restricted funds that can be used for roadway maintenance only. Current maintenance efforts average approximately 100 miles per year of resurfacing.

Staff Recommendations

- Adopt a Resolution of Support for a Regional Transportation Tax Measure for the Stanislaus Region.
- Approve Public Works' expenditure plan for the proposed County-wide Transportation Sales Tax Program for projects in the unincorporated areas of Stanislaus County.
- Authorize the Director of Public Works to submit the expenditure plan to the Stanislaus Council of Governments for inclusion in the region's Final Expenditure Plan.

C-6

Christine Ferraro - Transportation funding proposal (please disregard prior email sent)

From: Valley Improvement Projects
<valleyimprovementprojects@gmail.com>
To: Stan Risen <RISENS@stancounty.com>
Date: 2/24/14 2:15 PM
Subject: Transportation funding proposal (please disregard prior email sent)
CC: Christine Ferraro <ferroc@stancounty.com>

To: Stan Risen, the Stanislaus County Board of Supervisors
From: Valley Improvement Projects
Subject: Transportation funding proposal

Good afternoon,

As a community-based and directed organization, Valley Improvement Projects is dedicated to promote policies that positively affect our county's most underrepresented and vulnerable communities. We feel that StanCOG's current transportation funding proposal does not provide adequate funding (6% of total) for public transit, bicyclists, pedestrians, seniors and the disabled. We urge StanCOG to allocate at least 30% of funds towards these populations as neighboring San Joaquin County's voter approved 2006 update to Measure K did. This is a great opportunity to show county residents that StanCOG is listening to their concerns and dedicated towards implementing them into policy.

Valley Improvement Projects would like this email added to the public comment for Tuesday, February 25th's Board of Supervisors meeting.

Thank you,
Emiliano Mataka
Secretary

--

Valley Improvement Projects
(209) 589-9277
400 12th Street Suite 14

Modesto, CA 95354

valleyimprovementprojects@gmail.com

<http://valleyimprovementprojects.org>