

STANISLAUS COUNTY

Agricultural Crop Report

2012



**The 2012 Stanislaus County Agricultural
Crop Report is dedicated to**

Gary Caseri



Gary served as Agricultural Commissioner and Sealer of Weights and Measures for Stanislaus County from March 2008 until his retirement in March of 2013.

Gary began his official service to the California agricultural community in 1977 when he began employment with the State of California, Department of Food and Agriculture as a seasonal pest detection trapper. In 1978, he began working for Merced County as an Agricultural Biologist. He was promoted to Deputy Agricultural Commissioner in 1987 and Assistant Agricultural Commissioner/Sealer in 1989. In 2001, Gary accepted the position of the Agricultural Commissioner and Sealer of Weights & Measures for Tuolumne County where he also served as the Air Pollution Control Officer and the Director of Animal Control. Gary was appointed as the Stanislaus County Agricultural Commissioner and Sealer of Weights & Measures in March of 2008.

We thank Gary for his leadership, his dedicated service to our County and for his devotion to agriculture.

STANISLAUS COUNTY AGRICULTURAL COMMISSIONER'S OFFICE

2012 ANNUAL CROP REPORT

The Honorable Board of Supervisors
County of Stanislaus

William O'Brien

Vito Chiesa, Chairman

Terry Withrow

Dick Monteith

Jim DeMartini, Vice-Chairman

Supervisor District 1

Supervisor District 2

Supervisor District 3

Supervisor District 4

Supervisor District 5

Monica Nino
Chief Executive Officer

Milton O'Haire
Agricultural Commissioner/Sealer

CALIFORNIA ALMONDS

The almond tree, native to the Middle East region was first planted in California's coastal areas by Spanish padres near Franciscan missions in the mid 1700's. The moist, cool weather of the coastal areas, however, did not provide optimum growing conditions. In the 1800's, growers seeking a more favourable growing climate began planting almond trees further inland leading to almonds eventually being planted in the San Joaquin Valley.

During the 1800's some of today's prominent almond varieties were being developed through research and crossbreeding. By the turn of the 20th century, the almond industry was firmly established in the Central Valley. However, almonds from Spain and Italy continued to dominate world markets. Production increased after World War I and growers began to mechanize to compete with hand shelling and very low wages in Spain and Italy.

In 1941, production from almond orchards in Stanislaus County averaged just 300 pounds per acre with growers receiving \$0.26/lb for their crop. From 1941 to 1960 the County's almond acreage increased slowly to just under 7,000 acres in 1960.

In the 1950's the industry experienced advances in many areas connected to growing and harvesting almonds, from changes in irrigation practices to the use of mechanical harvesting equipment and sprayers. The University of California helped growers improve their cultural practices resulting in higher yields and better profits. In Stanislaus County, as in other almond growing areas in California, acreage increased rapidly from the early 1960's through the 1980's.

With the United States as the largest market in the world for almonds, California almond growers now produce nearly 100% of the domestic almond supply and account for over 75% of the worldwide production. Stanislaus County is one of California's top almond producing counties with more than 155,000 acres, 20% of the acres in the State. Stanislaus County currently has more than 1,200 almond growers and yields regularly exceed 2,000 pounds per acre. More than 30 local export companies shipped over 235 million pounds of almonds to international markets in 2012.

It took more than 100 years for the almond to become the number two crop in Stanislaus County, a position it has held consistently since 1992. Although many challenges lay ahead for the agricultural community, such as water availability, water quality, land use issues, and pest and disease pressures, the almond industry has met past challenges and now stands at the threshold of being the number one agricultural commodity in Stanislaus County. Only time will tell whether or not almonds will become the top crop, but one thing is certain, the almond has already made its mark on California and Stanislaus County.





**AGRICULTURAL COMMISSIONER'S OFFICE AND
SEALER OF WEIGHTS & MEASURES**

Milton O'Haire
Agricultural Commissioner/Sealer

3800 Cornucopia Way, Suite B
Modesto, California 95358
Phone: 209.525.4730 Fax: 209.525.4790

Karen Ross, Secretary
California Department of Food and Agriculture

and

The Honorable Board of Supervisors of Stanislaus County

We are pleased to submit, in accordance with Section 2279 of the California Food and Agricultural Code, Stanislaus County's Annual Crop and Livestock Report for 2012. This report provides a statistical description of Stanislaus County's agricultural production. We must emphasize that this report represents **gross values** of agricultural commodities and **does not reflect production costs or profits**.

The value of agricultural commodities produced last year in Stanislaus County increased almost 7% to \$3,277,843,000. This represents an all time high in Crop Production Values with an increase of \$208,020,000 from the 2011 gross production value of \$3,069,823,000. This is primarily attributed to an increase in the Fruit and Nut Crops, most notably almonds, walnuts and grapes, along with tomatoes and chickens. Overall, Livestock and Poultry Products decreased mainly due to lower milk prices.

We wish to express our appreciation to agricultural producers, industry representatives and public agencies who have cooperated in providing data for this report. We would also like to express sincere thanks to the Agricultural Commissioner's staff, especially Agricultural Inspector Richard Homer who compiled the report, and Susan Azevedo who prepared the information for publication.

Respectfully submitted,

Milton O'Haire
Agricultural Commissioner/Sealer
Stanislaus County

Theresa Spezzano
County Director, UC Cooperative Extension
Stanislaus County

Fruit & Nut Crops



Category	Year	Harvested Acres	Per Acre	Total	Unit	Per Unit	Total
Almond Meat	2012	155,114	1.09	169,000	Ton	\$ 4,354	\$ 735,826,000
	2011	149,676	1.12	168,000	Ton	\$ 3,740	\$ 628,320,000
Almond Hulls	2012			338,000	Ton	\$ 140	\$ 47,320,000
	2011			335,000	Ton	\$ 130	\$ 43,550,000
Almond Shells	2012			169,000	Ton	\$ 22	\$ 3,718,000
	2011			168,000	Ton	\$ 20	\$ 3,360,000
Apples	2012	687	22.00	15,100	Ton	\$ 1,475	\$ 22,273,000
	2011	772	20.20	15,600	Ton	\$ 665	\$ 10,374,000
Apricots	2012	4,585	12.00	55,000	Ton	\$ 475	\$ 26,125,000
	2011	4,678	12.00	56,100	Ton	\$ 403	\$ 22,608,000
Cherries	2012	3,085	3.80	11,700	Ton	\$ 4,050	\$ 47,385,000
	2011	3,161	2.76	8,700	Ton	\$ 4,840	\$ 42,108,000
Citrus*	2012	752					\$ 6,760,000
	2011	487					\$ 5,437,000
Grapes, All	2012	13,640					\$ 82,439,000
	2011	10,998					\$ 56,441,000
Red Varieties	2012	8,457	13.90	118,000	Ton	\$ 483	\$ 56,994,000
	2011	6,958	10.23	71,200	Ton	\$ 509	\$ 36,241,000
White Varieties	2012	5,183	10.77	55,800	Ton	\$ 456	\$ 25,445,000
	2011	4,040	10.00	40,400	Ton	\$ 500	\$ 20,200,000
Peaches, All	2012	8,075					\$ 62,490,000
	2011	8,088					\$ 57,221,000
Cling	2012	7,345	22.68	167,000	Ton	\$ 317	\$ 52,939,000
	2011	7,352	22.20	163,000	Ton	\$ 292	\$ 47,596,000
Freestone	2012	730	14.50	10,600	Ton	\$ 901	\$ 9,551,000
	2011	736	15.00	11,000	Ton	\$ 875	\$ 9,625,000
Walnuts	2012	38,295	1.86	71,200	Ton	\$ 3,000	\$ 213,600,000
	2011	31,873	1.90	60,600	Ton	\$ 2,900	\$ 175,740,000
Miscellaneous*	2012	2,880					\$ 17,055,000
	2011	1,905					\$ 15,888,000
TOTAL	2012	227,113					\$ 1,264,991,000
	2011	211,638					\$ 1,061,047,000

*Citrus includes: Grapefruit, Lemons, Oranges, Pomelos and Tangerines (all prices and yields averaged together)

*Miscellaneous includes: Avocados, Berries (Blackberries, Boysenberries, Blueberries & Strawberries), Chestnuts, Figs, Jujube, Kiwi, Nectarines, Olives, Pears, Pecans, Persimmons, Pistachios, Plums, Pluots, Pomegranates, Prunes, Quince and Table Grapes



Vegetable Crops



Category	Year	Harvested Acres	Per Acre	Total	Unit	Per Unit	Total
Beans, Succulent	2012	3,348	1.25	4,190	Ton	\$ 900	\$ 3,771,000
	2011	4,113	2.05	8,400	Ton	\$ 638	\$ 5,359,000
Broccoli	2012	2,120	5.00	10,600	Ton	\$ 440	\$ 4,664,000
	2011	5,811	5.00	29,000	Ton	\$ 440	\$ 12,760,000
Cauliflower	2012	2,113	5.00	10,600	Ton	\$ 500	\$ 5,300,000
	2011	674	5.00	3,370	Ton	\$ 500	\$ 1,685,000
Melons, All	2012	2,561					\$ 18,974,000
	2011	2,381					\$ 12,853,000
Cantaloupe	2012	1,926	18.00	34,700	Ton	\$ 400	\$ 13,880,000
	2011	1,812	11.25	20,400	Ton	\$ 440	\$ 8,976,000
Honeydew	2012	506	15.18	7,680	Ton	\$ 474	\$ 3,640,000
	2011	387	17.50	6,800	Ton	\$ 400	\$ 2,720,000
Melons, Other*	2012	129	36.09	4,660	Ton	\$ 312	\$ 1,454,000
	2011	182	24.57	4,500	Ton	\$ 257	\$ 1,157,000
Pumpkins	2012	299	20.00	5,980	Ton	\$ 120	\$ 718,000
	2011	150	15.00	2,300	Ton	\$ 220	\$ 506,000
Spinach	2012	1,510	12.00	18,100	Ton	\$ 115	\$ 2,082,000
	2011	3,316	12.70	42,100	Ton	\$ 146	\$ 6,147,000
Squash, All	2012	221	18.00	3,980	Ton	\$ 210	\$ 836,000
	2011	600	13.00	7,800	Ton	\$ 200	\$ 1,560,000
Sweet Potatoes	2012	1,171	23.00	26,900	Ton	\$ 300	\$ 8,070,000
	2011	1,480	22.50	33,300	Ton	\$ 300	\$ 9,990,000
Tomatoes, All	2012	30,689					\$ 121,148,000
	2011	30,039					\$ 91,014,000
Fresh	2012	2,360	14.54	34,300	Ton	\$ 440	\$ 15,092,000
	2011	2,622	12.56	33,000	Ton	\$ 400	\$ 13,200,000
Processing	2012	28,329	52.00	1,473,000	Ton	\$ 72	\$ 106,056,000
	2011	27,417	43.00	1,179,000	Ton	\$ 66	\$ 77,814,000
Miscellaneous*	2012	3,340					\$ 21,344,000
	2011	3,385					\$ 24,546,000
TOTAL	2012	47,372					\$ 186,907,000
	2011	51,949					\$ 166,420,000

*Melons, Other includes: Crenshaw and Watermelon

*Miscellaneous includes: Asparagus, Beets, Bok Choy, Cabbage Green, Cabbage Napa, Celeriac, Cilantro, Collard Greens, Cucumber, Cucumber Pickle, Daikon, Dandelion, Dill, Edible Flower, Endive, Escarole, Fennel, Garlic, Herb Spice, Kale, Kohlrabi, Leek, Lettuce Leaf, Lettuce Romaine, Mint, Mustard, Mustard Greens, Onion Dry, Onion Green, Parsley, Pepper Fruiting, Peppers Fruiting Process, Radicchio, Radish, Rosemary, Sage, Spinach, Sweet Basil, Swiss Chard, Turnip, Vegetable and Vegetable Leaf

Field Crops



Category	Year	Harvested Acres	Per Acre	Total	Unit	Per Unit	Total
Beans, Dried All	2012	25,506					\$ 38,309,000
	2011	23,464					\$ 34,460,000
Black-eyes	2012	6,764	1.18	7,980	Ton	\$ 1,010	\$ 8,060,000
	2011	4,951	1.20	5,900	Ton	\$ 1,100	\$ 6,490,000
Baby Limas	2012	5,430	1.50	8,150	Ton	\$ 990	\$ 8,069,000
	2011	6,826	1.50	10,200	Ton	\$ 1,020	\$ 10,404,000
Large Limas	2012	12,726	1.33	16,900	Ton	\$ 1,130	\$ 19,097,000
	2011	11,482	1.25	14,400	Ton	\$ 1,100	\$ 15,840,000
Beans, Dried Other	2012	586	1.25	733	Ton	\$ 900	\$ 660,000
	2011	205	1.68	344	Ton	\$ 920	\$ 316,000
Bean Straw	2012			25,500	Ton	\$ 95	\$ 2,423,000
	2011			23,500	Ton	\$ 60	\$ 1,410,000
Hay, Alfalfa	2012	36,055	7.80	281,000	Ton	\$ 220	\$ 61,820,000
	2011	40,429	7.08	286,000	Ton	\$ 245	\$ 70,070,000
Hay, Oat	2012	33,576	3.17	106,000	Ton	\$ 151	\$ 16,060,000
	2011	41,512	3.70	154,000	Ton	\$ 160	\$ 24,640,000
Hay, Other*	2012	12,290	3.43	42,200	Ton	\$ 188	\$ 7,934,000
	2011	13,536	4.47	61,000	Ton	\$ 150	\$ 9,150,000
Pasture, Irrigated	2012	33,000			Acre	\$ 196	\$ 6,468,000
	2011	33,200			Acre	\$ 192	\$ 6,374,000
Rangeland	2012	433,000			Acre	\$ 19	\$ 8,227,000
	2011	436,000			Acre	\$ 20	\$ 8,720,000
Rice	2012	2,032	4.20	8,530	Ton	\$ 326	\$ 2,781,000
	2011	1,586	3.99	6,300	Ton	\$ 363	\$ 2,287,000
Silage, All	2012	143,714					\$ 148,557,000
	2011	166,732					\$ 156,311,000
Other*	2012	56,317	15.60	879,000	Ton	\$ 39	\$ 34,281,000
	2011	69,534	14.87	1,034,000	Ton	\$ 37	\$ 38,258,000
Corn	2012	82,819	28.29	2,343,000	Ton	\$ 48	\$ 112,464,000
	2011	91,457	27.00	2,469,000	Ton	\$ 47	\$ 116,043,000
Sudan	2012	4,578	12.00	54,900	Ton	\$ 33	\$ 1,812,000
	2011	5,741	12.50	71,800	Ton	\$ 28	\$ 2,010,000

*Hay, Other includes: Grass, Sudan, Teff, Wheat, and Winter Forage

*Silage, Other includes: Alfalfa (1 cutting), Barley, Grass, Oats, Ryegrass, Sorghum, Triticale, Vetch, Wheat, and Winter Forage



Field Crops (con't)



Category	Year	Harvested Acres	Per Acre	Total	Unit	Per Unit	Total
Wheat, All	2012	3,957					\$ 4,630,000
	2011	3,463					\$ 3,408,000
Wheat, Grain	2012	3,957	3.05	12,100	Ton	\$ 245	\$ 2,965,000
	2011	3,463	2.90	10,000	Ton	\$ 220	\$ 2,200,000
Wheat, Straw	2012			18,100	Ton	\$ 92	\$ 1,665,000
	2011			15,100	Ton	\$ 80	\$ 1,208,000
Miscellaneous*	2012	2,385			Acre		\$ 3,070,000
	2011	3,394			Acre		\$ 3,939,000
TOTAL	2012	725,515					\$ 297,856,000
	2011	763,316					\$ 319,359,000

*Miscellaneous includes: Barley, Corn Grain, Corn Human Consumption, Oat Grain and Safflower

Other Agriculture

Category	Year	Total	Total
All Other Agriculture*	2012	592,360	\$ 25,801,000
	2011	740,900	\$ 26,194,000

*Other Agriculture includes:

Firewood (orchard prunings and tree removal for firewood), Fuel Cogeneration (orchard prunings and orchard removal for fuel), Compost & Worm Castings (worm castings and all wood and green waste recycling), and Aquaculture (Silver Carp, Sturgeon, Large Mouth Bass and Channel Catfish)

Seed Crops



Category	Year	Harvested Acres	Per Acre	Total	Unit	Per Unit	Total
Field Crop*	2012	752					\$ 959,000
	2011	745					\$ 1,038,000
Other*	2012	234					\$ 307,000
	2011	144					\$ 432,000
TOTAL	2012	986					\$ 1,266,000
	2011	889					\$ 1,470,000

*Field Crop includes: Cowpea, Dried Bean and Lima Bean

*Other includes: Oat, Onion, Rice, Squash and Tomato

Nursery Products

Category	Year	Field Acres	Quantity Sold	Unit	Per Unit	Total
Deciduous Fruit & Nut Trees/Vines	2012	782	14,030,000	EA	\$ 4.59	\$ 64,398,000
	2011	762	13,348,000	EA	\$ 5.35	\$ 71,412,000
Ornamental Trees & Shrubs	2012	489	1,974,000	EA	\$ 14.50	\$ 28,623,000
	2011	488	2,009,000	EA	\$ 10.20	\$ 20,492,000
Miscellaneous*	2012	625				\$ 16,411,000
	2011	477				\$ 3,741,000
TOTAL	2012	1,896				\$ 109,432,000
	2011	1,727				\$ 95,645,000

*Miscellaneous includes: Christmas Trees, Turf, Evergreen Fruit & Nut Shrubs, Perennials and Vegetable Transplants

Organic Products

Category	Year	Harvested Acres	Per Acre	Total	Unit	Per Unit	Total
All Organic Products	2012	4,113					\$ 14,572,000
	2011	5,312					\$ 41,244,000



Apiary Products



Category	Year	Total	Unit	Per Unit	Total
Beeswax*	2012	478,000	LB	\$3.10	\$ 1,482,000
	2011	461,000	LB	\$2.50	\$ 1,153,000
Honey*	2012	4,098,000	LB	\$2.05	\$ 8,401,000
	2011	3,954,000	LB	\$1.50	\$ 5,931,000
Pollination	2012	310,000	COL	\$155.00	\$ 48,050,000
	2011	299,352	COL	\$145.00	\$ 43,406,000
Queen Bees	2012	11,800	EA	\$16.00	\$ 189,000
	2011	10,200	EA	\$15.00	\$ 153,000
TOTAL	2012				\$ 58,122,000
	2011				\$ 50,643,000

*Honey and Beeswax are based off of resident colonies plus the value of the colonies during almond pollination season



Livestock and Poultry



Category	Year	Number of Head	Total Live Weight	Unit	Per Unit	Total
Cattle & Calves, All	2012	326,790				\$ 214,217,000
	2011	331,714				\$ 207,649,000
Beef Feeders*	2012	135,740				\$ 34,288,000
	2011	139,875				\$ 31,315,000
Beef Slaughter*	2012	45,800				\$ 17,857,000
	2011	47,197				\$ 15,641,000
Dairy Slaughter*	2012	75,250				\$ 70,722,000
	2011	72,396				\$ 70,674,000
Dairy Replacement	2012	70,000				\$ 91,350,000
	2011	72,246				\$ 90,019,000
Sheep & Lambs	2012	1,693	2,200	CWT	\$ 84.00	\$ 185,000
	2011	1,710	2,223	CWT	\$ 66.00	\$ 147,000
Hogs & Pigs	2012	31,470	37,800	CWT	\$ 65.00	\$ 2,457,000
	2011	34,970	41,964	CWT	\$ 69.80	\$ 2,929,000
Chickens, All	2012	184,098,587				\$ 245,771,000
	2011	176,966,000				\$ 220,080,000
Chickens	2012	53,045,672	306,186,000	LB	\$ 0.67	\$ 205,145,000
	2011	49,372,000	282,072,000	LB	\$ 0.64	\$ 180,526,000
Chicks	2012	131,052,915		EA	\$ 0.31	\$ 40,626,000
	2011	127,594,000		EA	\$ 0.31	\$ 39,554,000
Turkey, All	2012	12,267,946				\$ 74,515,000
	2011	8,773,000				\$ 67,240,000
Turkeys	2012	2,536,872	69,306,000	LB	\$ 0.88	\$ 60,989,000
	2011	2,439,000	67,459,000	LB	\$ 0.87	\$ 58,689,000
Poults	2012	9,731,074		EA	\$ 1.39	\$ 13,526,000
	2011	6,334,000		EA	\$ 1.35	\$ 8,551,000
Squab	2012	509,361		EA	\$ 5.04	\$ 2,567,000
	2011	518,032		EA	\$ 3.68	\$ 1,906,000
Game Birds*	2012	10,676		EA	\$ 2.34	\$ 25,000
	2011	500		EA	\$ 10.00	\$ 5,000
Goats*	2012	14,040				\$ 507,000
	2011	15,066				\$ 524,000
TOTAL	2012					\$ 540,244,000
	2011					\$ 500,480,000

*Beef Feeders includes: Feed Lots, Beef Steers, Beef Heifers, Beef Replacement Heifers, Transient Cattle, Dairy Drop Calves les Replacement Heifers

*Beef Slaughter includes: Beef Cows, Beef Bulls, Dairy Beef

*Dairy Slaughter includes: Spent Cows and Bulls

*Game Birds include: Ducks, Geese, Pheasant, Partridge, Quail and Swans

*Goats includes: Dairy Goat Offspring, Dairy Goat Slaughter and Meat Goats. The 2011 Goat Number of Head was adjusted from 11,000 to 15,066.

Livestock and Poultry Products



Category	Year	Total	Unit	Per Unit	Total
Milk, All	2012	43,476,000			\$ 739,630,000
	2011	40,969,000			\$ 766,186,000
Market	2012	43,323,000	CWT	\$17.00	\$ 736,491,000
	2011	40,223,000	CWT	\$18.69	\$ 751,768,000
Manufacturing	2012	127,000	CWT	\$17.00	\$ 2,159,000
	2011	717,000	CWT	\$18.66	\$ 13,379,000
Milk, Goat	2012	26,300	CWT	\$37.27	\$ 980,000
	2011	28,500	CWT	\$36.46	\$ 1,039,000
Eggs, Chicken Market	2012	35,200,000	DOZ	\$0.93	\$ 32,736,000
	2011	32,230,000	DOZ	\$1.00	\$ 32,230,000
Eggs, Turkey Hatching	2012	1,400,000	EA	\$0.92	\$ 1,288,000
	2011	2,344,000	EA	\$0.91	\$ 2,133,000
Eggs, Quail*	2012	41,600	10 PACK	\$0.54	\$ 22,500
	2011	29,000	10 PACK	\$0.72	\$ 21,000
Eggs, Duck	2012	70,800	DOZ	\$4.00	\$ 283,000
	2011	83,000	DOZ	\$4.00	\$ 332,000
Wool	2012	13,500	LB	\$1.60	\$ 21,600
	2011	13,680	LB	\$1.67	\$ 22,850
Manure	2012	674,000	TON	\$6.93	\$ 4,671,000
	2011	957,541	TON	\$6.68	\$ 6,396,000
TOTAL	2012				\$ 778,652,000
	2011				\$ 807,321,000



Summary of Categories

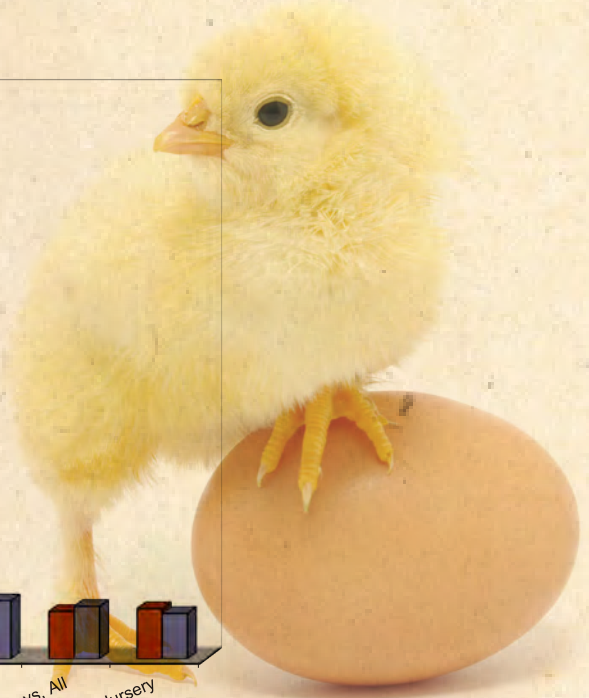
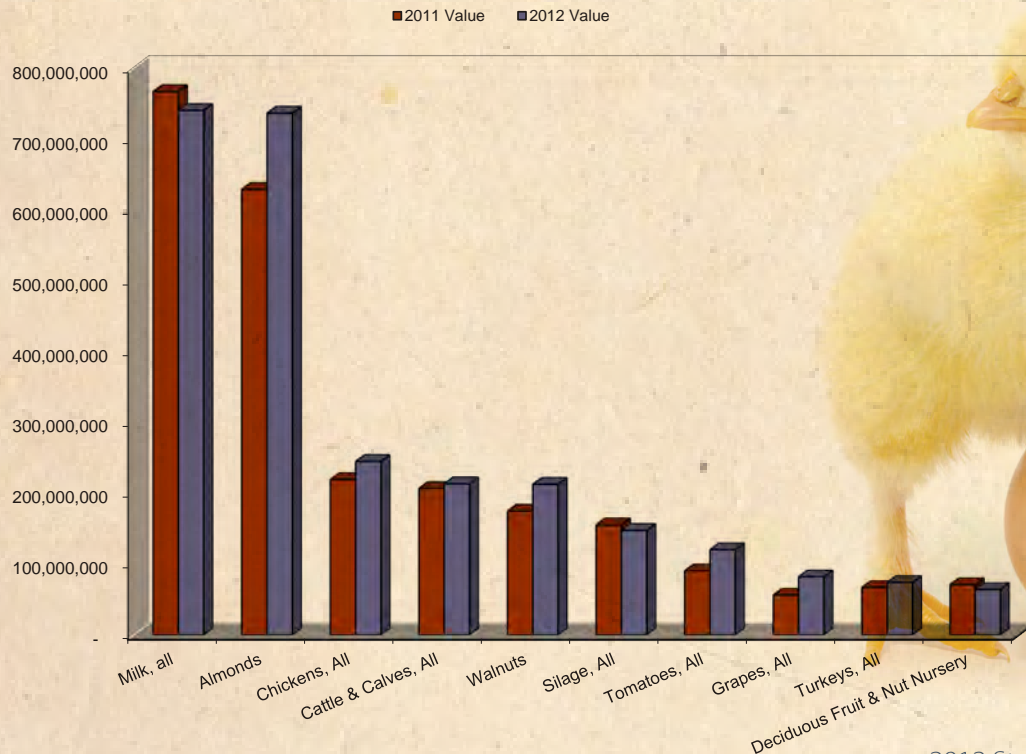
Category	Year		Harvest Acreage		Total	
	2012	2011	2012	2011	2012	2011
Fruit and Nut Crops	2012		227,113		\$ 1,264,991,000	
	2011		211,638		\$ 1,061,047,000	
Vegetable Crops	2012		47,372		\$ 186,907,000	
	2011		51,949		\$ 166,420,000	
Field Crops	2012		725,515		\$ 297,856,000	
	2011		763,316		\$ 319,359,000	
Other Agriculture	2012				\$ 25,801,000	
	2011				\$ 26,194,000	
Seed Crops	2012		986		\$ 1,266,000	
	2011		889		\$ 1,470,000	
Nursery Products	2012		1,896		\$ 109,432,000	
	2011		1,727		\$ 95,645,000	
Organic Products	2012		4,113		\$ 14,572,000	
	2011		5,312		\$ 41,244,000	
Apiary Products	2012				\$ 58,122,000	
	2011				\$ 50,643,000	
Livestock and Poultry	2012				\$ 540,244,000	
	2011				\$ 500,480,000	
Livestock and Poultry Products	2012				\$ 778,652,000	
	2011				\$ 807,321,000	
TOTAL	2012		1,006,995		\$ 3,277,843,000	
	2011		1,034,831		\$ 3,069,823,000	

50 Years of Production Summary Totals

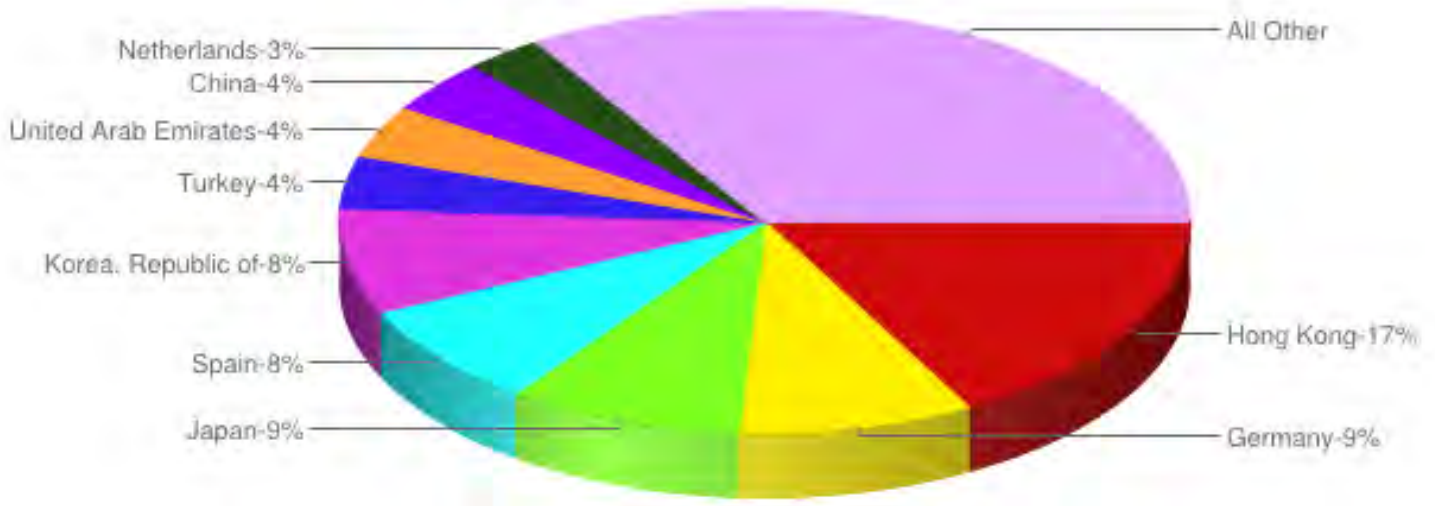
1963—\$ 158,551,000	1973—\$ 379,530,000	1983—\$ 720,740,000	1993—\$ 1,147,140,000	2003—\$ 1,454,932,000
1964—\$ 167,878,000	1974—\$ 409,538,000	1984—\$ 794,623,000	1994—\$ 1,115,316,000	2004—\$ 1,978,434,000
1965—\$ 165,546,000	1975—\$ 397,311,000	1985—\$ 787,142,000	1995—\$ 1,115,492,000	2005—\$ 1,977,595,000
1966—\$ 192,813,000	1976—\$ 423,761,000	1986—\$ 790,764,000	1996—\$ 1,254,633,000	2006—\$ 2,148,152,000
1967—\$ 193,723,000	1977—\$ 501,367,000	1987—\$ 881,306,000	1997—\$ 1,316,942,000	2007—\$ 2,421,650,000
1968—\$ 199,311,000	1978—\$ 533,376,000	1988—\$ 957,568,000	1998—\$ 1,302,714,000	2008—\$ 2,473,843,000
1969—\$ 220,454,000	1979—\$ 706,595,000	1989—\$ 963,891,000	1999—\$ 1,210,211,000	2009—\$ 2,312,669,000
1970—\$ 237,210,000	1980—\$ 743,584,000	1990—\$ 1,038,356,000	2000—\$ 1,197,302,000	2010—\$ 2,572,434,000
1971—\$ 243,287,000	1981—\$ 781,185,000	1991—\$ 1,070,154,000	2001—\$ 1,353,300,000	2011—\$ 3,069,823,000
1972—\$ 269,541,000	1982—\$ 743,637,000	1992—\$ 1,073,930,000	2002—\$ 1,367,971,000	2012—\$ 3,277,843,000

Top Ten Commodities

Category	2012 Rank	2012 Value	2011 Rank	2011 Value
Milk, All	1	\$739,630,000	1	\$766,186,000
Almonds	2	\$735,826,000	2	\$628,320,000
Chickens, All	3	\$245,771,000	3	\$220,080,000
Cattle & Calves, All	4	\$214,217,000	4	\$207,649,000
Walnuts	5	\$213,600,000	5	\$175,740,000
Silage, All	6	\$148,557,000	6	\$156,311,000
Tomatoes, All	7	\$121,148,000	7	\$91,014,000
Grapes, All	8	\$82,439,000	-	\$56,441,000
Turkeys, All	9	\$74,515,000	10	\$67,240,000
Deciduous Fruit & Nut Nursery	10	\$64,398,000	8	\$71,412,000



Top Exports for 2012



In 2012, Stanislaus County Issued 8,800 Export Certificates for 121 Commodities

Exports by Country

Afghanistan	Cyprus	Iraq	Morocco	Somalia
Algeria	Czech Republic	Ireland	Nepal	South Africa
Argentina	Denmark	Israel	Netherlands	Spain
Australia	Dominican Republic	Italy	Netherlands Antilles	Sri Lanka
Austria	Ecuador	Jamaica	New Caledonia	Sudan
Azerbaijan	Egypt	Japan	New Zealand	Sweden
Bahrain	El Salvador	Jordan	Nicaragua	Switzerland
Barbados	Ethiopia	Kazakhstan	Norway	Syrian Arab Republic
Belgium	Finland	Kenya	Oman	Taiwan
Belize	France	Korea, Democratic People's Republic of	Pakistan	Thailand
Bolivia, Plurinational State of	French Polynesia	Korea, Republic of	Panama	Trinidad and Tobago
Bosnia and Herzegovina	Georgia	Kuwait	Peru	Tunisia
Brazil	Germany	Latvia	Philippines	Turkey
Bulgaria	Greece	Lebanon	Poland	Ukraine
Burkina Faso	Guatemala	Libya	Portugal	United Arab Emirates
Canada	Guyana	Libyan Arab Jamahiriya	Qatar	United Kingdom
Chad	Honduras	Lithuania	Russian Federation	Uruguay
Chile	Hong Kong	Malaysia	Saudi Arabia	Venezuela, Bolivarian Republic of
China	Hungary	Malta	Serbia	Viet Nam
Colombia	India	Mauritius	Singapore	Yemen
Costa Rica	Indonesia	Mexico	Slovakia	
Croatia	Iran, Islamic Republic of		Slovenia	

Pest Detection & Emergency Projects 2012



Yellow Panel Trap



Jackson Trap

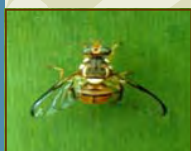
To protect the agricultural and horticultural industries in Stanislaus County, various traps are placed to monitor for specific insects. Trapping allows for the possible early detection of invasive and destructive pests that would be detrimental to our economy, the environment, and our health.

Pest	# of Traps	Crops Affected
Mediterranean Fruit Fly	439	Walnut, tomato, apple, almond, plum, peach, nectarine, pear, grape, orange, lemon, grapefruit, fig, pomegranate, kumquat and olive
Mexican Fruit Fly	221	Apple, apricot, citrus, pear, plum, peach, nectarine and pomegranate
General Fruit Fly	85	Citrus, stone fruit and pome fruit
Light Brown Apple Moth	439	Alfalfa, almond, apple, berries, broccoli, citrus, corn, grape, olive, stone fruit and tomatoes
Japanese Beetle	201	Turf and roses
Gypsy Moth	201	Most trees
Oriental Fruit Fly	221	Apple, citrus, cucumber, fig, grape, pear, pomegranate, stone fruit, tomato and walnut
Melon Fly	221	Peaches, oranges, beans, tomato, cucumber, apple, cantaloupe, grape, pear and watermelon
Glassy-winged Sharpshooter	2,186	Grape, almond, peach and citrus / vector for Pierce's Disease
Apple Maggot	70	Stone fruit and pome fruit
Vine Mealy Bug	35	Grapes
Khapra Beetle	250	Grain and grain products
European Corn Borer	16	Corn, potatoes, oat, green bean, and rhubarb
Asian Citrus Psylid	849	Citrus
European Grapevine Moth	321	Grapes and spurge laurel
Red Imported Fire Ant	Survey & Treat	May infest agricultural and residential settings, as well as natural habitats-dangerous to children, pets, elderly and wildlife

# of Finds	Pest Found
4	Apple Maggot
1	Light Brown Apple Moth
2	Red Imported Fire Ant

Our survey includes traps to check for the Glassy-winged Sharpshooter (GWSS). Traps are set out at nurseries and residential sites, and inspections are done of all incoming plant shipments originating from GWSS infested counties.

Oriental Fruit Fly



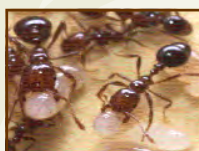
Khapra Beetle



Apple Maggot



Red Imported Fire Ant



Light Brown Apple Moth



Mexican Fruit Fly



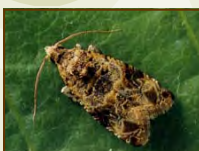
Asian Citrus Psylid



Vine Mealy Bug



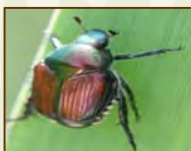
European Grapevine Moth



Med Fruit Fly



Japanese Beetle



Glassy Winged Sharpshooter



Melon Fly



Gypsy Moth



EMPLOYEES

of the Stanislaus County Agricultural Commissioner's Office



Our Mission

*"Support and Protect the well-being of Agriculture,
Business and the Community"*

Agricultural Commissioner/Sealer of Weights & Measures

Milton O'Haire

Assistant Agricultural Commissioner/Sealer

Daniel Bernaciak

Deputy Agricultural Commissioner/Sealer

Kamal Bagri Steve Logan Tim Pelican

Agricultural/Weights & Measures Inspectors

Marline Azevedo
Christopher Egli
Anna Genasci
Richard T. Homer
Kim Reed
Becky Van Cleave

Arpinder Brar
Melanie Fisher
Harinder Grewal
Isaiah Pagani
Hector Rodriguez

Gerardo Castaneda
Judith Gallardo
Deana Guerrero
Forrest Meares
Kelle Schroeder

Joseph Duchala
Cristina Galvan
Wendy Hahn
Claudia Parrish
Carolyn Sizemore

Confidential Assistant IV

Susan Azevedo

Agricultural Assistant II

Bertha Castillo Cassy Costa Tina Graver

Software Developer/Analyst II

Nathan Leon

Agricultural Facility Coordinator

Mike Sise

Administrative Staff

Ramona Cunningham Marietta Thomas Debbie Wohld

Extra-Help Agricultural Assistants

Gay Allard-Johnson
Stephen Bunce
George Gold
Bryan Lohman
Molly Wilkerson

Evelyn Barber
Kirstyn Cederlind
Becky Graham
Vickie Meeks
Max Wilson

Angela Bates
Susan Conyers
Teresa Homen
Danielle Mitchell

Sandra Blevins
Jim Friedrich
Alexa Ladd
Ron Varnell

POWERPOINT PRESENTATION

STANISLAUS COUNTY

Agricultural Crop Report

2012



The 2012 Stanislaus County Agricultural Crop Report is dedicated to Gary Caseri



Gary's career of service to the Ag community spanned 36 years from 1977 to 2013. He worked for the State of California, Department of Food and Agriculture and three Counties. We thank Gary for his leadership, his dedicated service to our County and for his devotion to agriculture.

TOTAL CROP VALUE

2012 Value: \$ 3,277,843,000

2011 Value: \$ 3,069,823,000

2010 Value: \$ 2,572,434,000

2002 Value: \$ 1,367,971,000



Major Changes

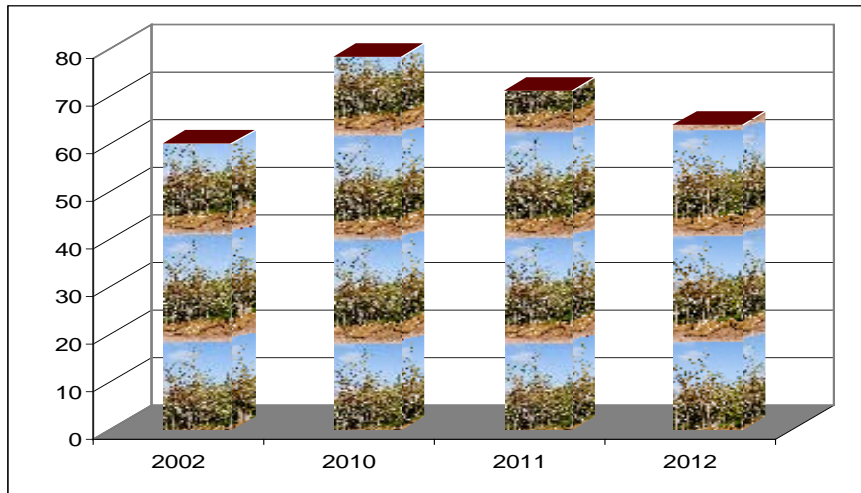
- Almonds - \$107,506,000
- Walnuts - \$ 37,860,000
- Grapes - \$ 25,998,000
- Tomatoes - \$ 30,134,000
- Chickens - \$ 25,691,000
- Milk, all - \$ (26,556,000)



10

DECIDUOUS FRUIT & NUT NURSERY

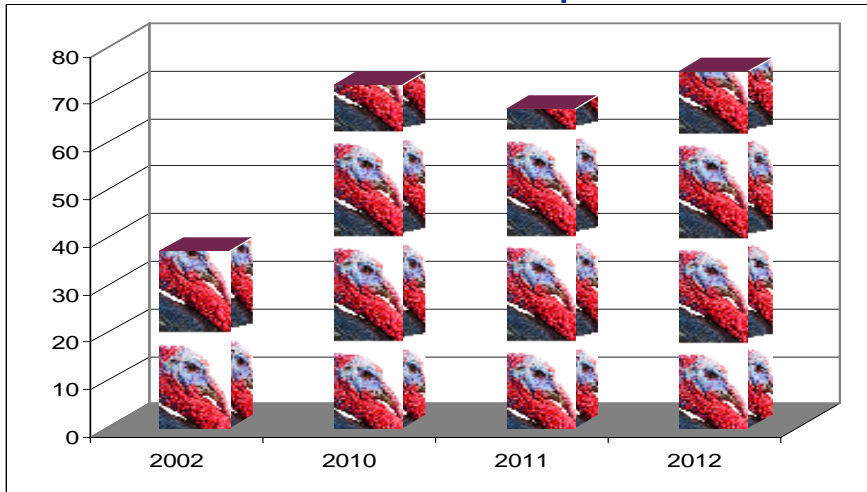
- **2012 Value: \$ 64 Million**
- 2011 Value: \$ 71 Million
- 2010 Value: \$ 78 Million
- 2002 Value: \$ 60 Million



9

TURKEYS

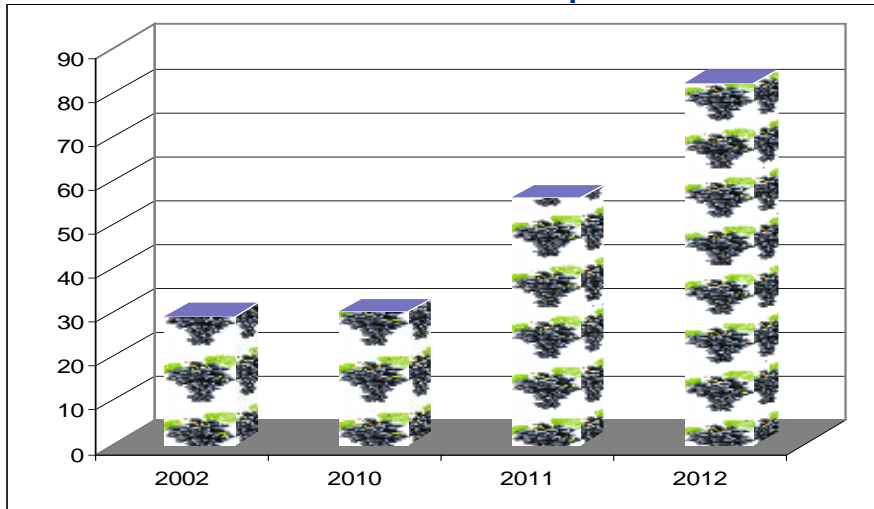
- **2012 Value: \$ 75 Million**
- 2011 Value: \$ 67 Million
- 2010 Value: \$ 72 Million
- 2002 Value: \$ 37 Million





GRAPES

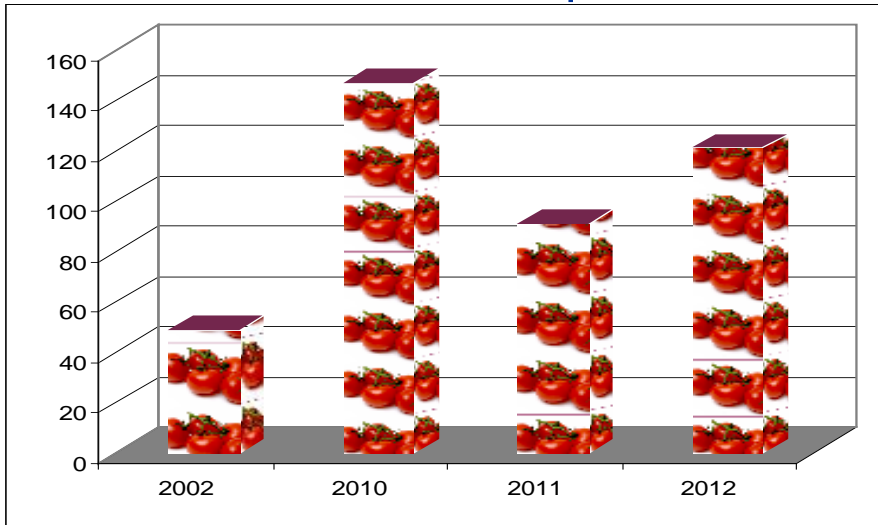
- **2012 Value: \$ 82 Million**
- 2011 Value: \$ 56 Million
- 2010 Value: \$ 30 Million
- 2002 Value: \$ 29 Million





TOMATOES

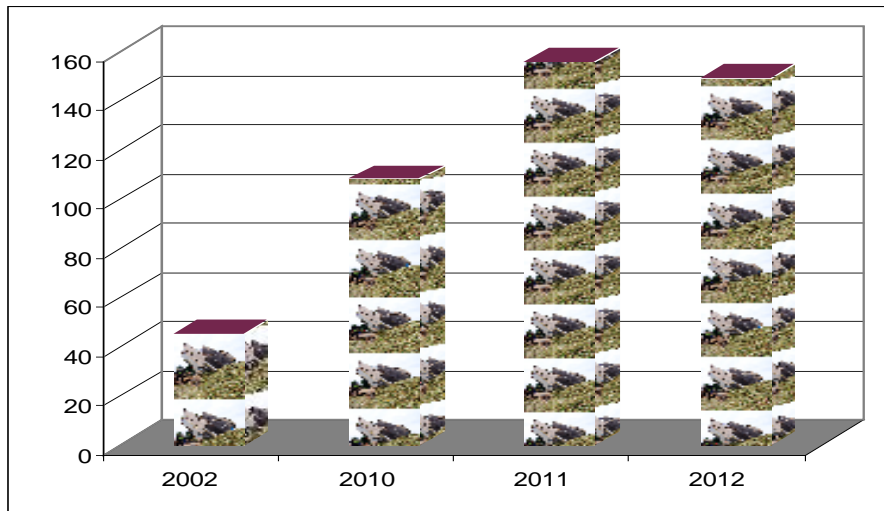
- **2012 Value: \$ 121 Million**
- 2011 Value: \$ 91 Million
- 2010 Value: \$ 148 Million
- 2002 Value: \$ 49 Million



6

SILAGE

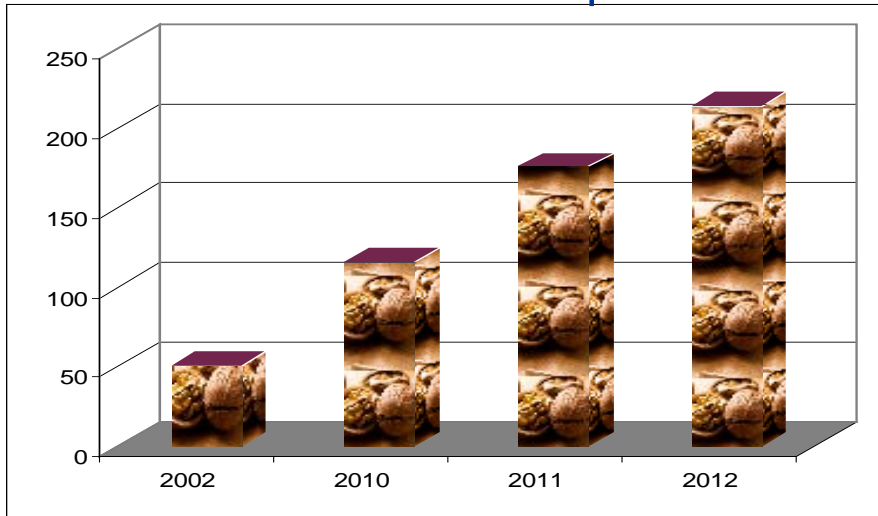
- **2012 Value: \$ 149 Million**
- 2011 Value: \$ 156 Million
- 2010 Value: \$ 108 Million
- 2002 Value: \$ 45 Million



5

WALNUTS

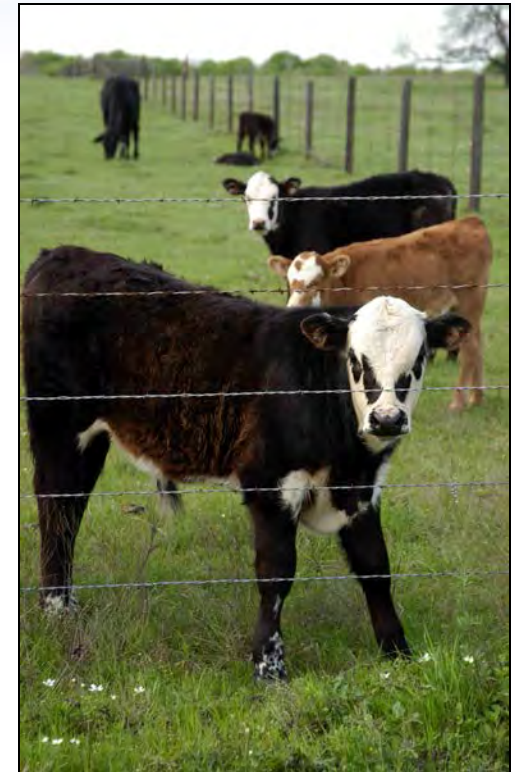
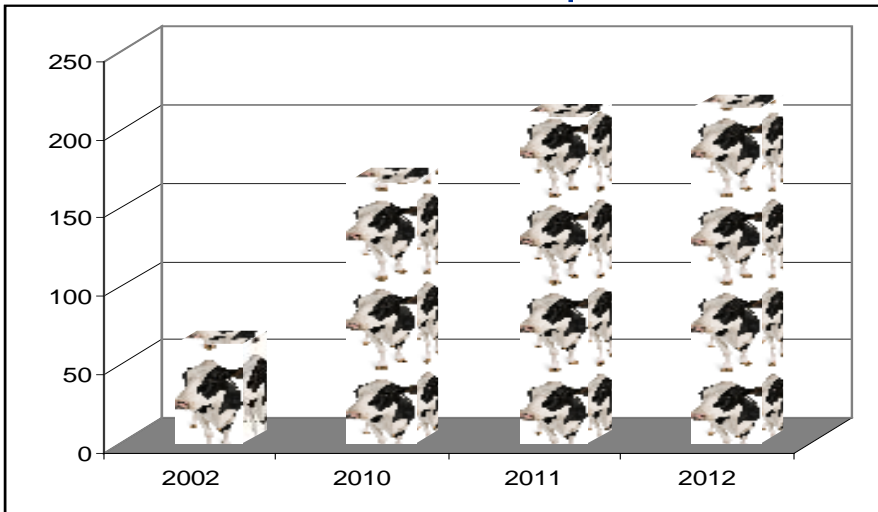
- **2012 Value: \$ 214 Million**
- **2011 Value: \$ 176 Million**
- **2010 Value: \$ 116 Million**
- **2002 Value: \$ 51 Million**



4

CATTLE & CALVES

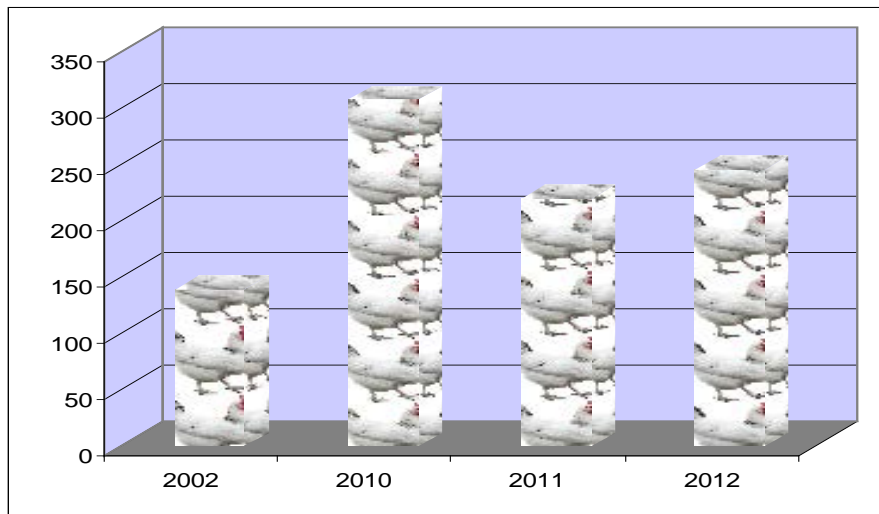
- **2012 Value: \$ 214 Million**
- **2011 Value: \$ 208 Million**
- **2010 Value: \$ 167 Million**
- **2002 Value: \$ 63 Million**



3

CHICKENS

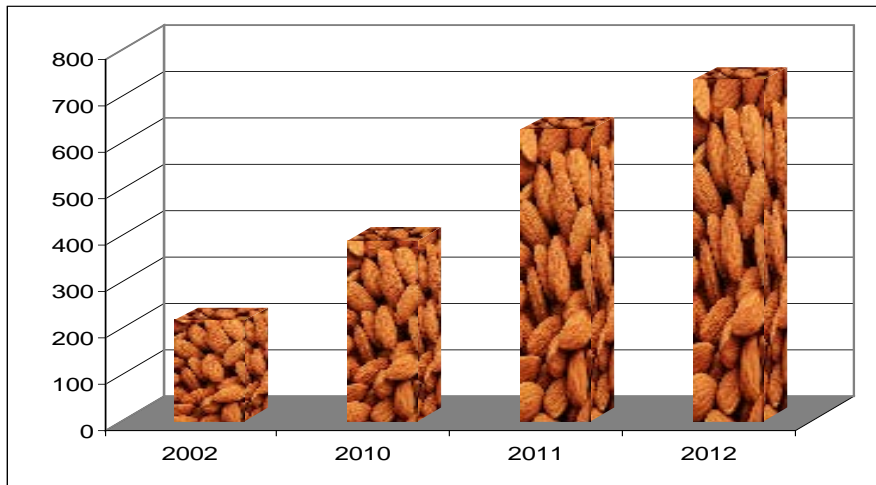
- **2012 Value: \$ 246 Million**
- 2011 Value: \$ 220 Million
- 2010 Value: \$ 308 Million
- 2002 Value: \$ 139 Million



2

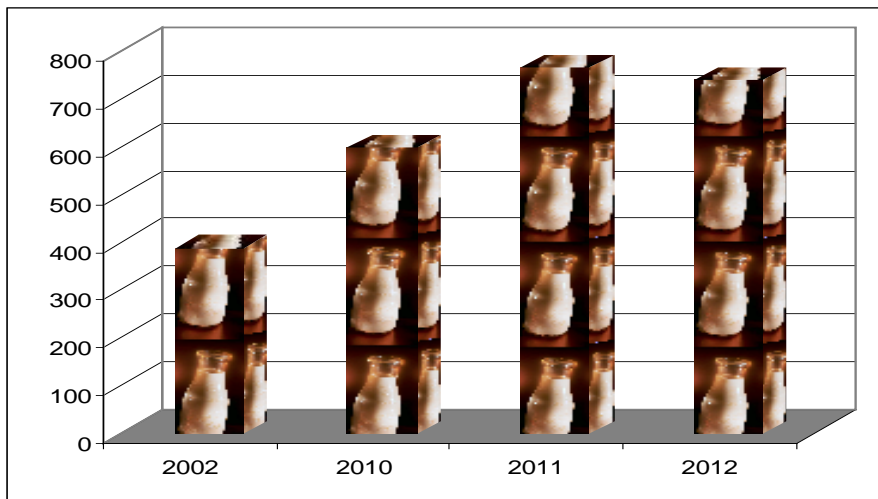
ALMONDS

- **2012 Value: \$ 736 Million**
- 2011 Value: \$ 628 Million
- 2010 Value: \$ 390 Million
- 2002 Value: \$ 216 Million



1 MILK

- **2012 Value: \$ 740 Million**
- 2011 Value: \$ 766 Million
- 2010 Value: \$ 599 Million
- 2002 Value: \$ 390 Million

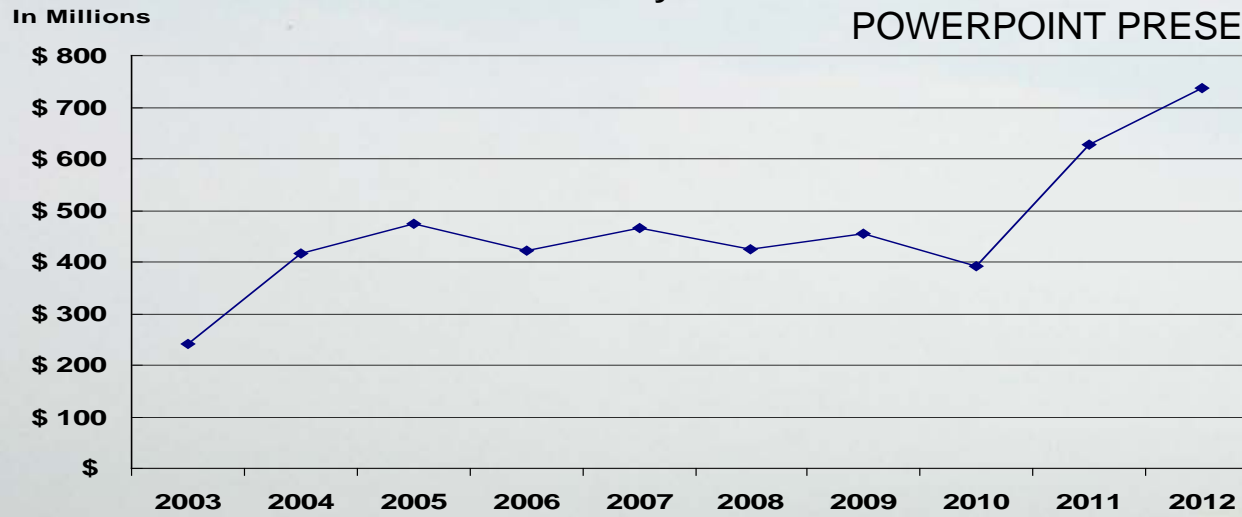


Top Ten Commodities

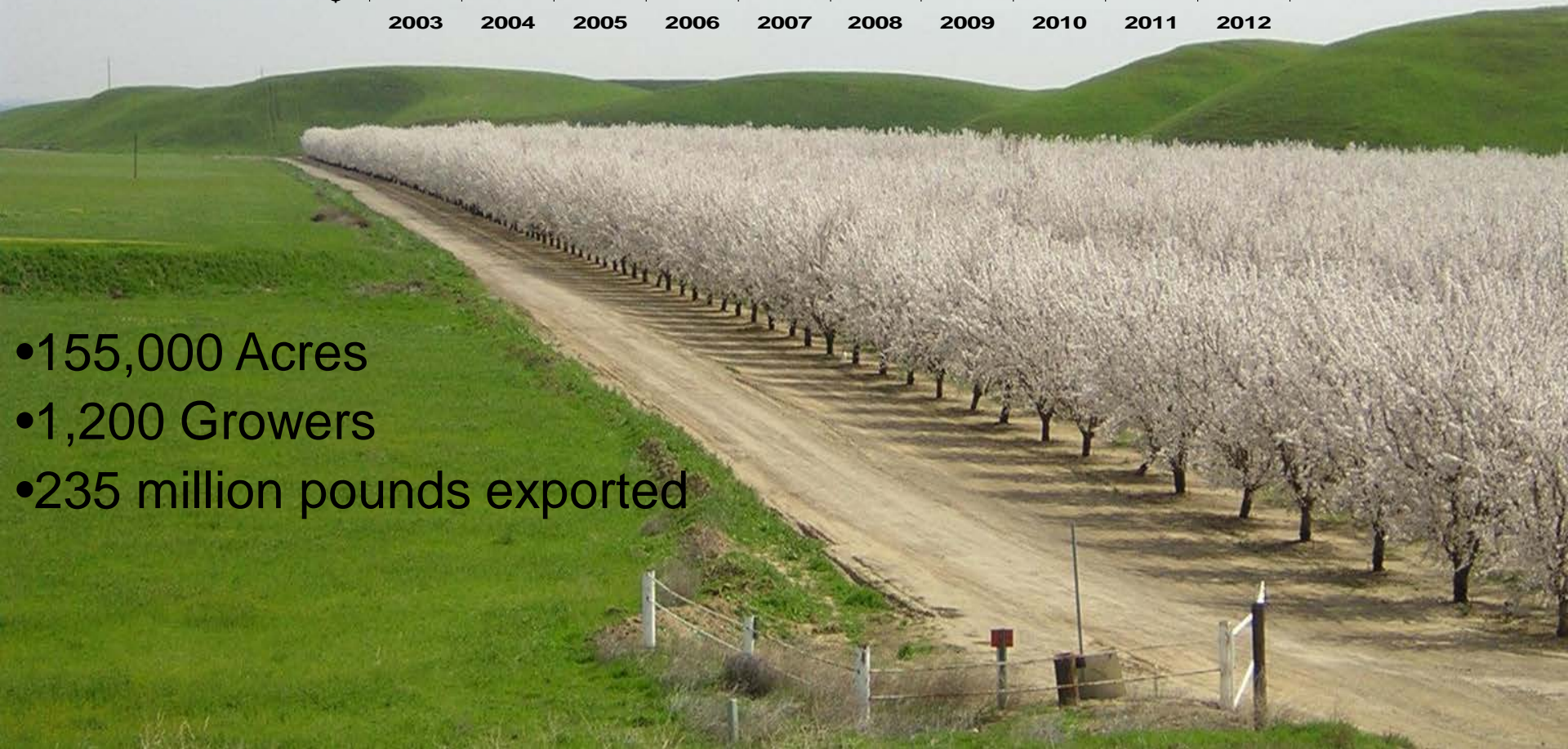
Category	2012 Rank	2012 Value	2011 Rank	2011 Value
Milk, All	1	\$739,630,000	1	\$766,186,000
Almonds	2	\$735,826,000	2	\$628,320,000
Chickens, All	3	\$245,771,000	3	\$220,080,000
Cattle & Calves, All	4	\$214,217,000	4	\$207,649,000
Walnuts	5	\$213,600,000	5	\$175,740,000
Silage, All	6	\$148,557,000	6	\$156,311,000
Tomatoes, All	7	\$121,148,000	7	\$91,014,000
Grapes, All	8	\$82,439,000	-	\$56,441,000
Turkeys, All	9	\$74,515,000	10	\$67,240,000
Deciduous Fruit & Nut Nursery	10	\$64,398,000	8	\$71,412,000

Stanislaus County Almond Value

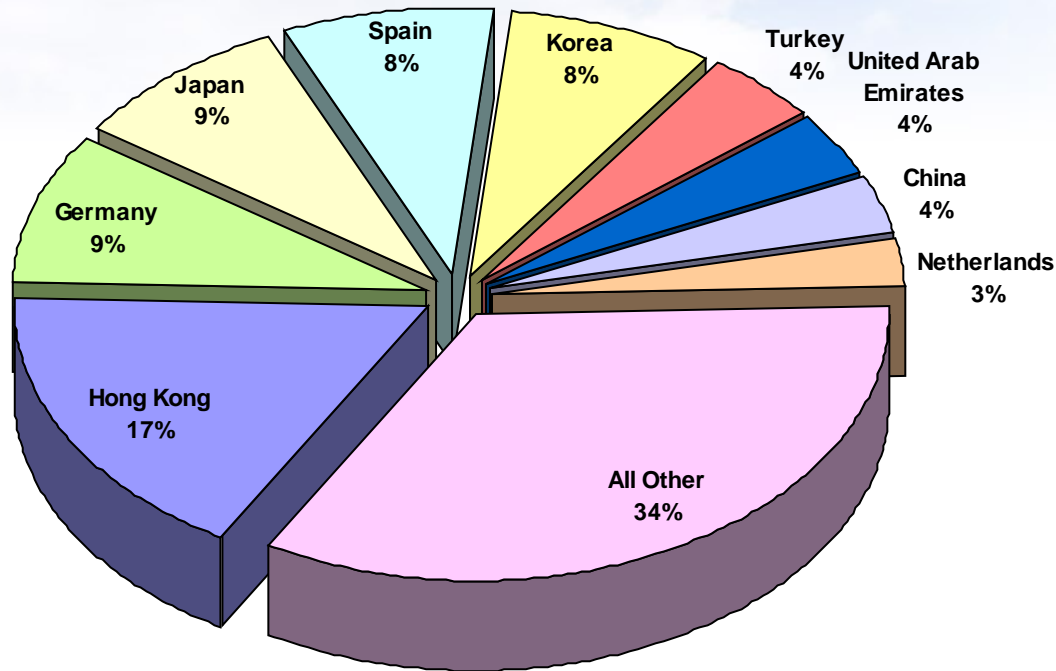
POWERPOINT PRESENTATION



- 155,000 Acres
- 1,200 Growers
- 235 million pounds exported

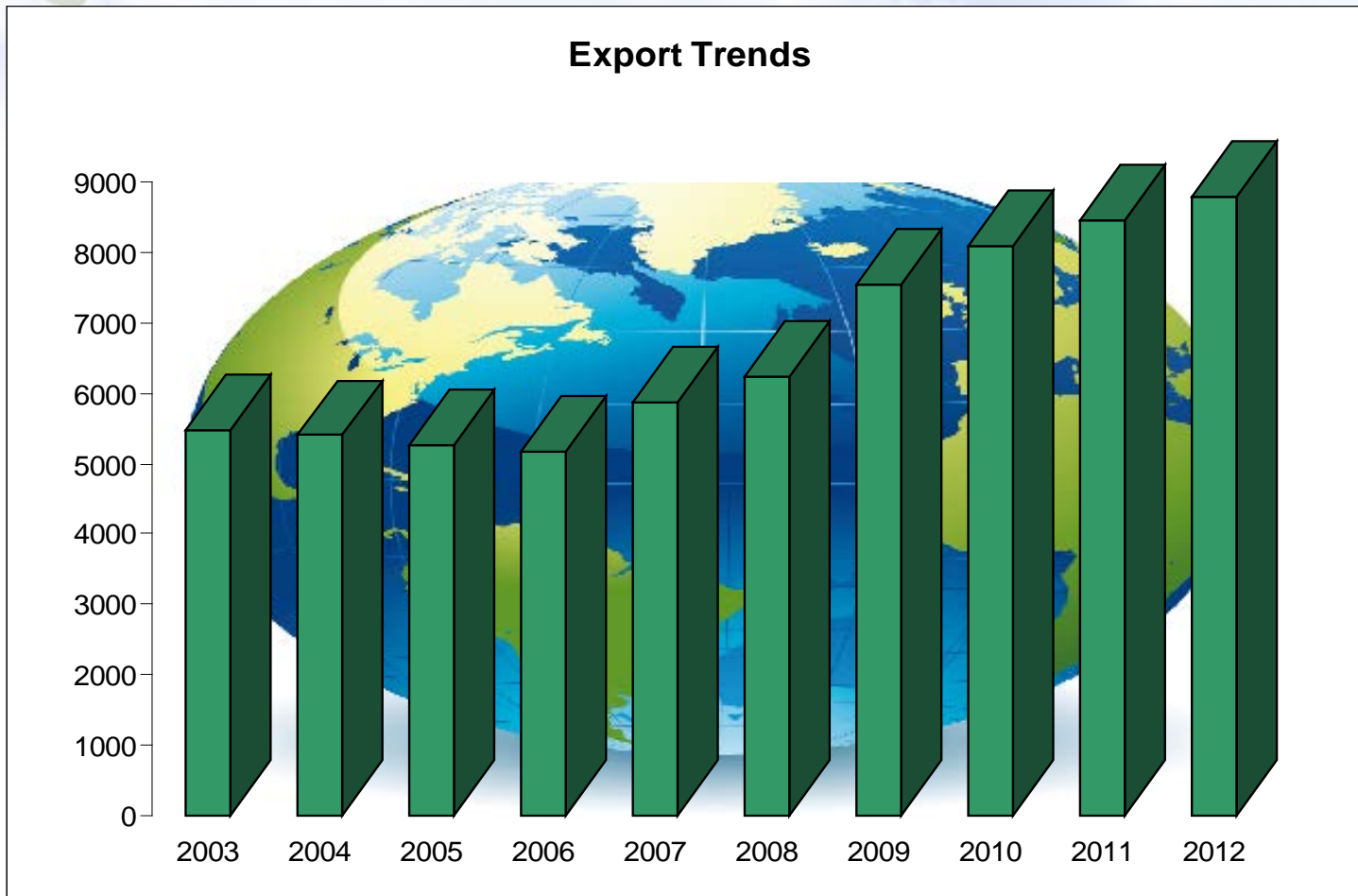


Top Exports for 2012



Stanislaus County products shipped to 107 countries

In 2012, Stanislaus County Issued 8,800 Export Certificates for 121 commodities



Pest Detection & Emergency Projects 2012

To protect the agricultural and horticultural industries in Stanislaus County, 5,755 traps were placed to monitor for specific insects. Trapping allows for the possible early detection of invasive and destructive pests that would be detrimental to our economy, the environment, and our health.

<u>Pest Found</u>	<u># of Finds</u>
Apple Maggot	4
Light Brown Apple Moth	1
Red Imported Fire Ant	2

Apple Maggot



Red Imported Fire Ant



Light Brown Apple Moth





The Crop Report is available on line at
www.stanag.org