

THE BOARD OF SUPERVISORS OF THE COUNTY OF STANISLAUS
ACTION AGENDA SUMMARY

DEPT: Public Works *D. Haugh*

BOARD AGENDA # *C-1

Urgent Routine

AGENDA DATE February 15, 2011

CEO Concurs with Recommendation YES NO
(Information Attached)

4/5 Vote Required YES NO

SUBJECT:

Approval to Adopt Plans and Specifications for the Burlington Northern Santa Fe (BNSF) Railroad Crossing at Various Roads near the Town of Denair and Set the Bid Opening Date

STAFF RECOMMENDATIONS:

1. Adopt plans and specifications for the BNSF Railroad Crossing at Various Roads project near the town of Denair.
2. Direct the Department of Public Works to set the bid opening date and time.
3. Direct the Public Works Department to publish and mail a notice inviting bids to trade journals as required by law.

FISCAL IMPACT:

The total estimated cost for this project is \$230,000. The project will be 100% funded by Caltrans Section 130 funds. At this time, \$5,000 is required for reproduction costs, advertisement costs and other miscellaneous costs associated with the bid process.

BOARD ACTION AS FOLLOWS:

No. 2011-108

On motion of Supervisor Withdraw and approved by the following vote, Seconded by Supervisor Chiesa

Ayes: Supervisors: O'Brien, Chiesa, Withdraw, DeMartini, and Chairman Monteith

Noes: Supervisors: None

Excused or Absent: Supervisors: None

Abstaining: Supervisor: None

- 1) X Approved as recommended
- 2) _____ Denied
- 3) _____ Approved as amended
- 4) _____ Other:

MOTION:

Christine Ferraro

ATTEST: CHRISTINE FERRARO TALLMAN, Clerk

File No.

Approval to Adopt Plans and Specifications for the Burlington Northern Santa Fe (BNSF) Railroad Crossing at Various Roads near the Town of Denair and Set the Bid Opening Date

DISCUSSION:

The BNSF Railroad Crossing at Various Roads project consists of work to improve safety at the following BNSF Railroad Crossings near the town of Denair in Stanislaus County: Barnhart Road, Zeering Road, Main Street, Monte Vista Avenue, Vincent Road and East Road. The improvements include: the installation of new signs, asphalt concrete dike, pre-manufactured raised median curb with tubular delineators, ADA compliant pavement markings, striping; and coordination with BNSF Railroad for installation of new railroad control arms and guard railing.

On October 23, 2008, the Caltrans Division of Rail (Section 130) issued a "Notice to Proceed" and entered into a service contract (No. 75LX099) with Stanislaus County Public Works for funds totaling \$280,940 for the project design and construction. Public Works staff has completed the design and the project is ready for bidding.

The project is exempt from the California Environmental Quality Act (CEQA) under Class 1, Section 15301 (existing facilities) of the California Code of Regulations.

On January 24, 2011, Stanislaus County filed CEQA Categorical Exemption determination for the project.

Public Works staff recommends that the Board of Supervisors adopt the plans and specifications and set the bid opening date.

The following tentative schedule is provided:

Adopt Plans & Specifications:	Tuesday, February 15, 2011
Advertise:	Monday, February 21, 2011
	Monday, February 28, 2011
	Monday, March 7, 2011
Bid Opening:	Wednesday, March 30, 2011
Estimated Award Contract:	Tuesday, April 19, 2011
Estimated Notice to Proceed:	Tuesday, May 10, 2011
Estimated Complete Construction:	Monday, May 30, 2011

POLICY ISSUES:

The recommended actions are consistent with the Board's priorities of A Safe Community, A Healthy Community and a Well Planned Infrastructure System by improving railroad crossing safety in this area of Stanislaus County.

Approval to Adopt Plans and Specifications for the Burlington Northern Santa Fe (BNSF) Railroad Crossing at Various Roads near the Town of Denair and Set the Bid Opening Date

STAFFING IMPACT:

There is no staffing impact associated with this item.

CONTACT PERSON:

Matt Machado, Public Works Director. Telephone: (209) 525-4130.

NCW:jg

L:\ROADS\9243 — BNSF RR Crossings\Design\Adopt & Bid (BNSF RR Crossing)-Rough Draft

ATTACHMENTS AVAILABLE
FROM YOUR CLERK

STANISLAUS COUNTY DEPARTMENT OF PUBLIC WORKS

PLANS FOR THE CONSTRUCTION OF

BNSF RAILROAD CROSSING IMPROVEMENTS AT VARIOUS ROADS



INDEX OF SHEETS

1. COVER SHEET
2. OVERLAY ROAD LAYOUT PLAN
3. OVERLAY ROAD SIGNING PLAN
4. OVERLAY ROAD LAYOUT PLAN
5. OVERLAY ROAD SIGNING PLAN
6. OVERLAY ROAD CONSTRUCTION DETAILS
7. MAIN STREET LAYOUT PLAN
8. MAIN STREET CONSTRUCTION DETAILS
9. MAIN STREET AERIAL LAYOUT PLAN
10. VACANT ROAD LAYOUT PLAN
11. EAST AERIAL LAYOUT PLAN
12. SUMMARY OF QUANTITIES

GENERAL NOTES

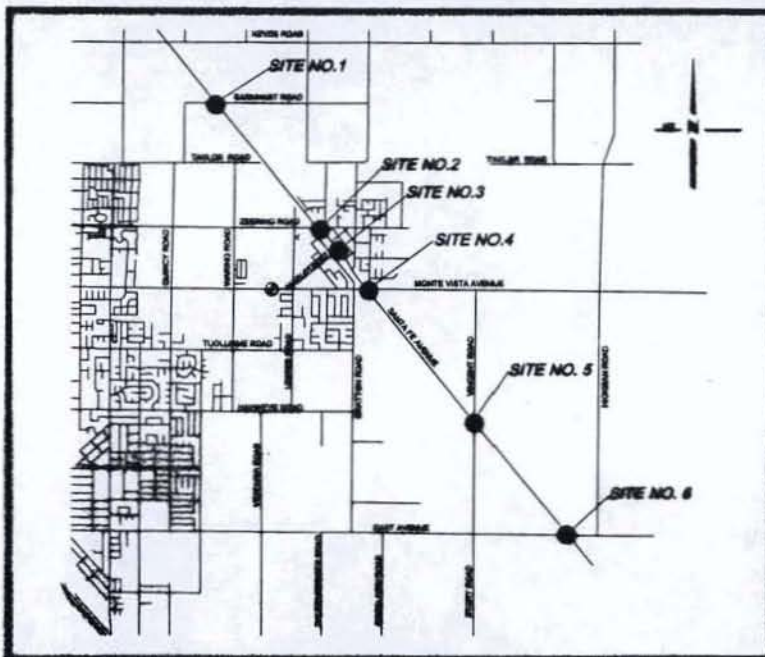
1. THE CONTRACTOR SHALL PROVIDE THE SERVICES REQUIRED IN THE MANHOLE TO AND A SPECIAL PROVISION.
2. ALL MATERIAL AND WORK SHALL CONFORM TO STANISLAUS COUNTY SPECIFICATIONS AND APPROVED EQUIVALENTS. ALL SPECIFICATIONS ARE SUBJECT TO THE APPROVAL AND AMENDMENT OF THE PUBLIC WORKS DEPARTMENT.
3. THE CONTRACTOR SHALL TAKE PRECAUTIONS MEASURED TO PROTECT ALL UTILITIES. THE CONTRACTOR SHALL DO NO EXCAVATION UNLESS ALL UTILITIES ARE LOCATED AND THE STANISLAUS COUNTY DEPARTMENT OF PUBLIC WORKS HAS BEEN ADVISED AND HAS GIVEN WRITTEN PERMISSION TO DIG. THIS PERMISSION IS NOT VALID UNLESS THE CONTRACTOR SHALL CALL U.S.A. AT LEAST FOUR-SEVEN (40) HOURS PRIOR TO DIGGING ANY UTILITIES.
4. THESE PLANS HAVE BEEN CHECKED BY THE STANISLAUS COUNTY DEPARTMENT OF PUBLIC WORKS AND OF COURTESY ENGINEERING. THE CONTRACTOR SHALL BE RESPONSIBLE FOR OBTAINING ALL NECESSARY PERMITS AND FOR OBTAINING ALL NECESSARY APPROVALS FROM ANY AGENCIES THE CONTRACTOR MAY BE REQUIRED TO OBTAIN BEFORE COMMENCING ANY WORK. THE CONTRACTOR SHALL BE RESPONSIBLE FOR OBTAINING ALL NECESSARY PERMITS AND FOR OBTAINING ALL NECESSARY APPROVALS FROM ANY AGENCIES THE CONTRACTOR MAY BE REQUIRED TO OBTAIN BEFORE COMMENCING ANY WORK.
5. ALL CONSTRUCTION AND ACTIVITIES SHALL CONFORM TO THE STATE WATER RESOURCES CONTROL BOARD, NATIONAL POLLUTION CONTROL ADMINISTRATION SYSTEM (NPDES), WATER DISCHARGE REQUIREMENTS FOR DISCHARGES OF STORM WATER RUNOFF ASSOCIATED WITH CONSTRUCTION ACTIVITY.
6. PRIOR TO BEGINNING ANY CONSTRUCTION, THE CONTRACTOR SHALL VERIFY THAT ALL NECESSARY FEDERAL, STATE, AND LOCAL PERMITS HAVE BEEN OBTAINED.
7. CLIENT CONTACT:

STANISLAUS COUNTY, DEPARTMENT OF PUBLIC WORKS
414 HUMBOLDT, (938) 388-4133
BURLINGTON NORTHERN SANTA FE RAILROAD
JOHN STOLLEY, (938) 388-6474

ABBREVIATIONS

- SP - EXISTING PAVEMENT
- SP/AS - ASPHALT SURFACE
- OPAC - OVERLAY PUBLIC UTILITIES CONVERSION
- BOCP - BUREAU OF CALIFORNIA PUBLIC UTILITIES
- ADA - AMERICAN WITH DISABILITIES ACT

TO BE SUPPLEMENTED BY STATE OF CALIFORNIA DEPARTMENT OF TRANSPORTATION
STANDARD PLANS DATED MAY 2006, AND ALL AMENDMENTS AND ADDENDA THERETO



PROJECT LOCATION MAP
NOT TO SCALE

for: [Signature] 2/4/11 DATE
MATT MACHADO, R.C.E. 58093
DIRECTOR OF PUBLIC WORKS
STANISLAUS COUNTY

[Signature] 2/4/11 DATE
DAN LEMMON, R.C.E. 58093
SENIOR CIVIL ENGINEER
STANISLAUS COUNTY



STANISLAUS COUNTY
DEPARTMENT OF PUBLIC WORKS
ENGINEERING AND OPERATIONS DIVISION
1710 MARION ROAD - JERSEYVILLE, CA 95029



COVER SHEET
PROJECT TITLE FOR
BNSF RAILROAD CROSSING IMPROVEMENTS
AT VARIOUS ROADS

JOB NO. 001
DATE: 02/04/11
DW BY: [Signature]
DW BY: [Signature]
SCALE: AS SHOWN

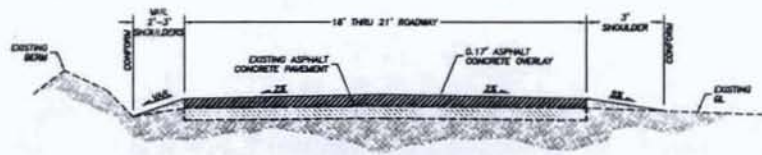
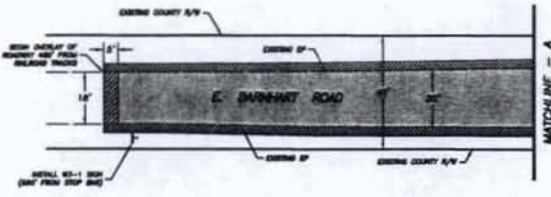
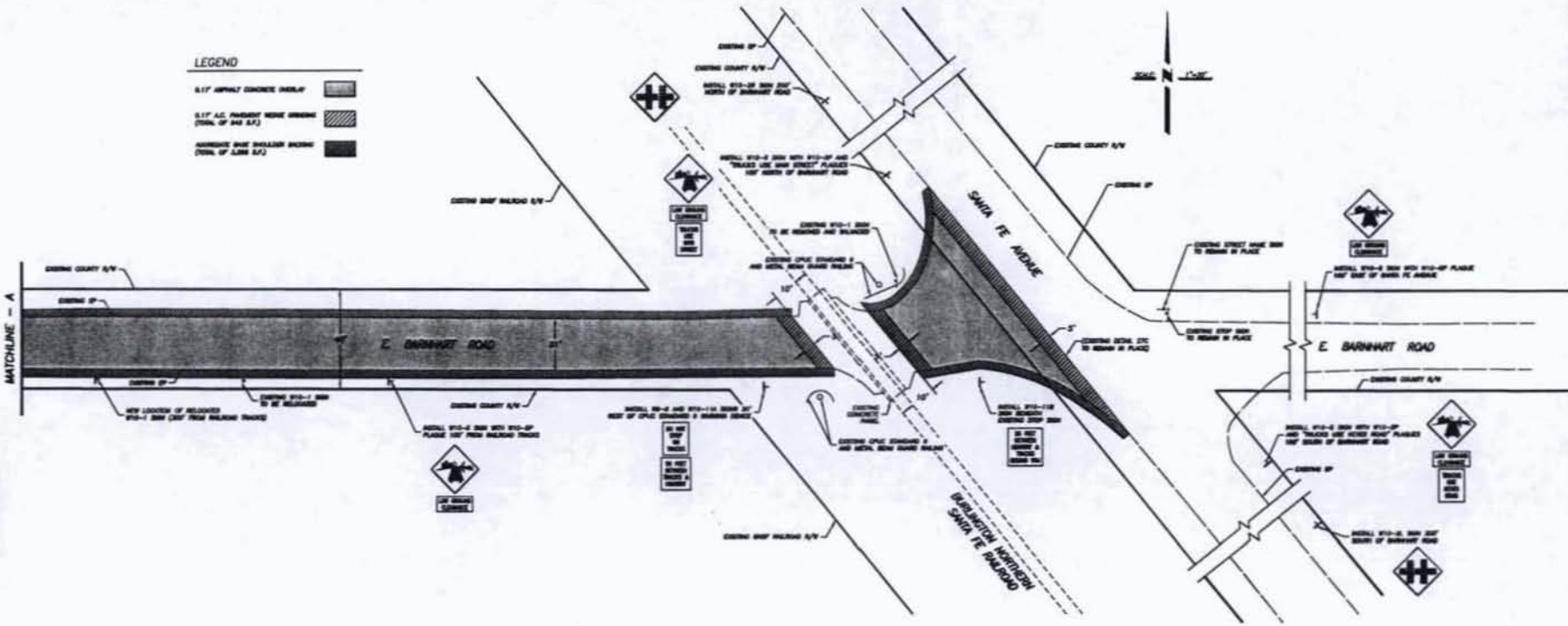


REVISION
STANISLAUS COUNTY DEPARTMENT OF PUBLIC WORKS
CONTRACT NO. 001 FOR PLAN NO. AT 100% OF
CONTRACT NO. 001, 02/04/11

SHEET
NUMBER
1
OF 12 SHEETS



- LEGEND**
- 0.17' ASPHALT CONCRETE OVERLAY
 - 0.17' A.C. PAVEMENT WEDGE SHIMMING (TOTAL OF 0.68' A.C.)
 - ASPHALTE BASE SHELLER SHIMMING (TOTAL OF 3.08' A.C.)



TYPICAL SECTION

BASIS OF BEARINGS:

COORDINATES AND BEARINGS ARE BASED ON THE CALIFORNIA COORDINATE SYSTEM NAD83, ZONE 3 (2002.00). A LINE BETWEEN MONUMENT DES248 (CM30) AND THE CONCRETE MONUMENT AT THE INTERIOR CORNER OF SECTION 6, TOWNSHIP 3 SOUTH, RANGE 9 EAST, (INTERSECTION OF JESSIE ROAD AND LESTER ROAD) BEARS SOUTH 54°04'43" EAST AS MEASURED BY STATIC OBSERVATION. ALL DISTANCES SHOWN ARE GROUND LEVEL DISTANCES UNLESS NOTED AS GRD. TO CONVERT GROUND DISTANCES TO GRID DISTANCES MULTIPLY BY 0.99993020 (CALCULATED GRID/MEASURED GROUND). GRID COORDINATES FOR THE INTERIOR SECTION CORNER OF SECTION 6, AS MEASURED BY STATIC OBSERVATION, WERE HELD AS FIXED. (N=2015217.22, E=4472788.54)



DATE	BY	CHKD

STANISLAUS COUNTY
 DEPARTMENT OF PUBLIC WORKS
 ENGINEERING AND OPERATIONS DIVISION
 1716 MORTON ROAD - MARIETTA, CA 95301



BARNHART ROAD LAYOUT PLAN
 IMPROVEMENT PLANS FOR:
 BNSF RAILROAD CROSSING IMPROVEMENTS
 AT VARIOUS ROADS

JOB NO.	2543
DATE	02/25/11
DR BY	HEW
CK BY	
SCALE	AS SHOWN

SHEET NUMBER
2
 OF 12 SHEETS



DATE	
BY	
CHECKED BY	
APPROVED BY	

STANISLAUS COUNTY
 DEPARTMENT OF PUBLIC WORKS
 ENGINEERING AND OPERATIONS DIVISION
 1716 MORAN ROAD - MARIETTA, CA 95558

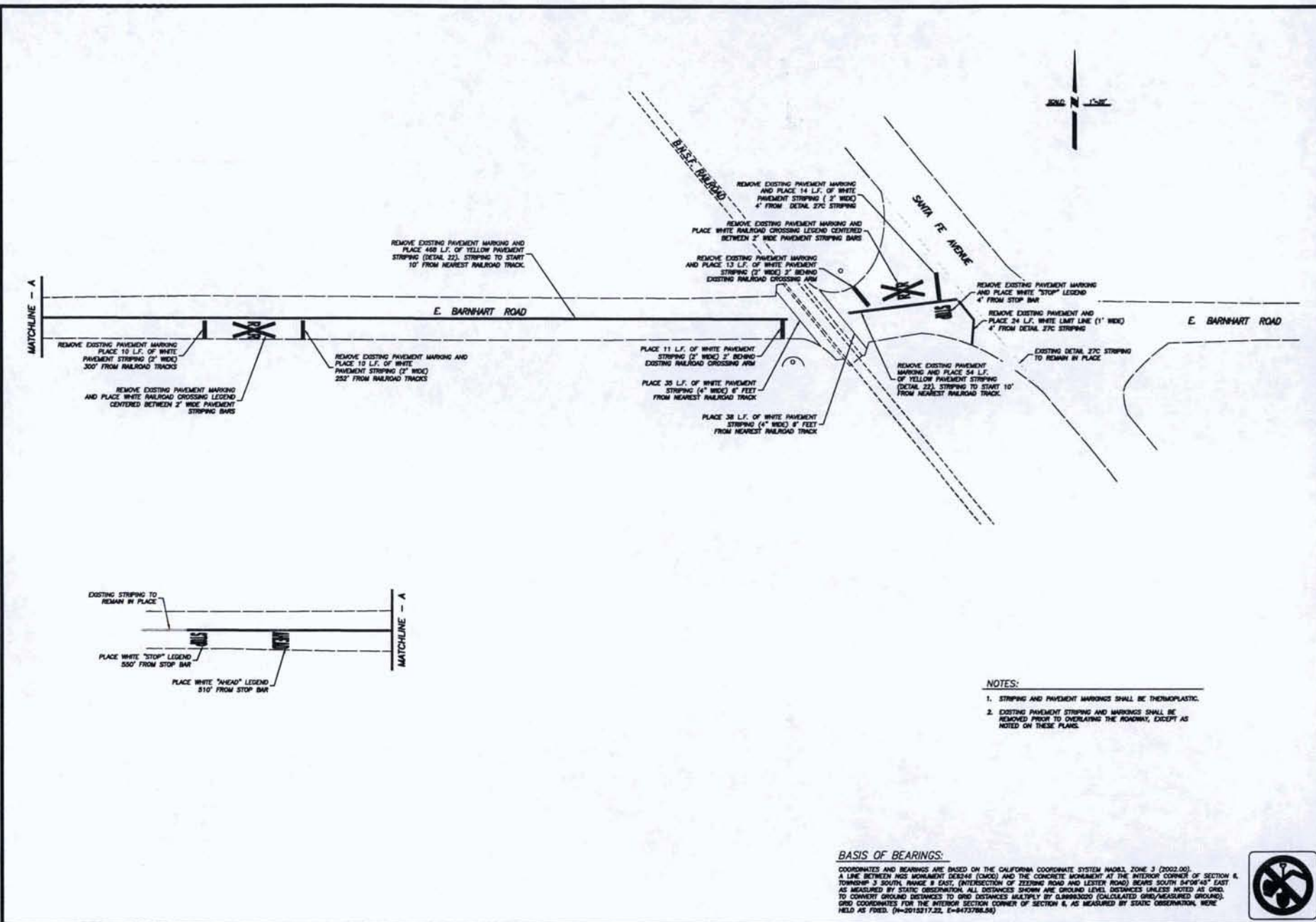


BARNHART ROAD STRIPING PLAN
 IMPROVEMENT PLANS FOR
 BNSF RAILROAD CROSSING IMPROVEMENTS
 AT VARIOUS ROADS

JOB NO. 0243
 DATE 02/28/11
 DR BY JEW
 CH BY JEW
 SCALE AS SHOWN

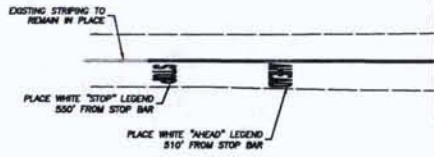
SHEET NUMBER
3

OF 12 SHEETS



MATCHLINE - A

MATCHLINE - A

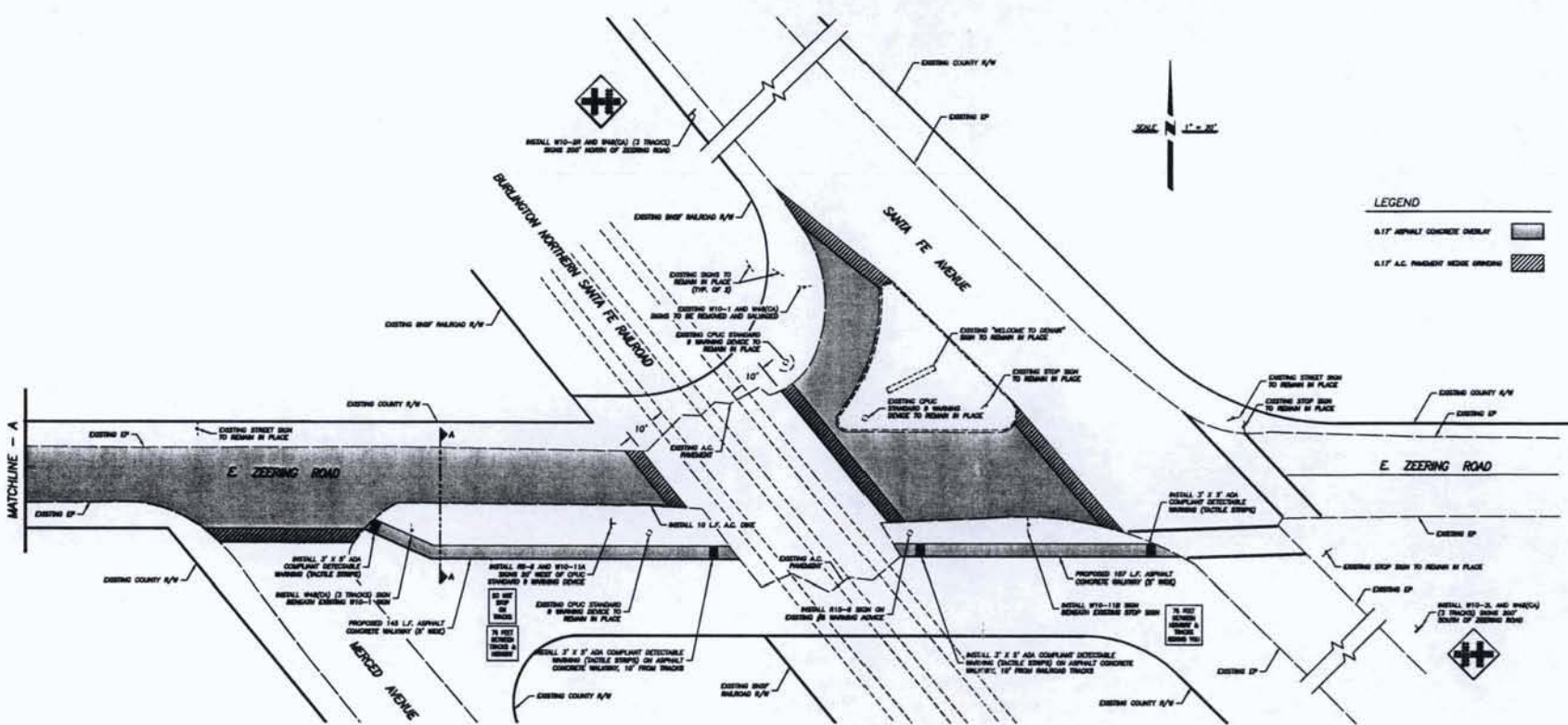


- NOTES:**
1. STRIPING AND PAVEMENT MARKINGS SHALL BE THERMOPLASTIC.
 2. EXISTING PAVEMENT STRIPING AND MARKINGS SHALL BE REMOVED PRIOR TO OVERLAYING THE ROADWAY, EXCEPT AS NOTED ON THESE PLANS.

BASIS OF BEARINGS:

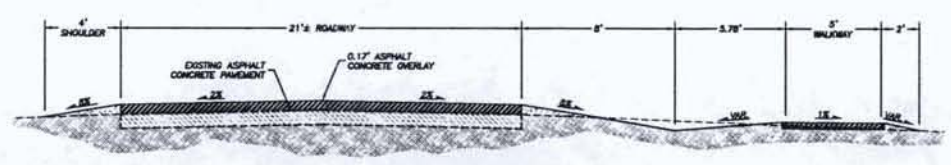
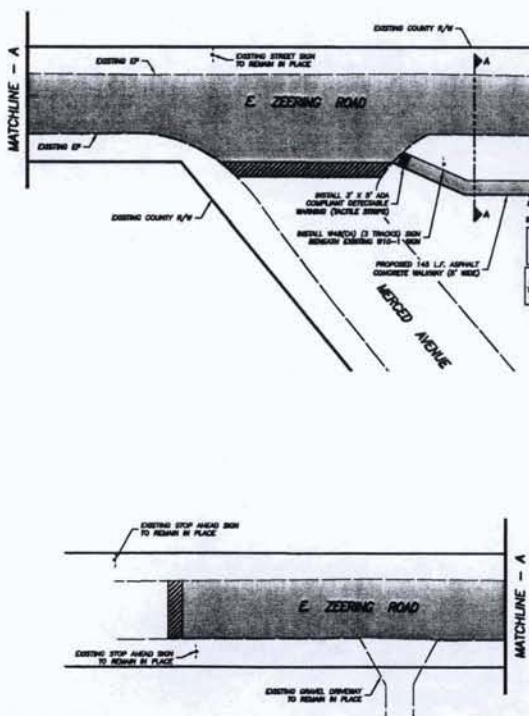
COORDINATES AND BEARINGS ARE BASED ON THE CALIFORNIA COORDINATE SYSTEM NAD83, ZONE 3 (2002.00). A LINE BETWEEN IRIS MONUMENT DEKSH (TMDK) AND THE CONCRETE MONUMENT AT THE INTERIOR CORNER OF SECTION 6, TOWNSHIP 3 SOUTH, RANGE 8 EAST, (INTERSECTION OF ZEDDING ROAD AND LEXTER ROAD) BEARS SOUTH 54°06'45" EAST AS MEASURED BY STATIC OBSERVATION. ALL DISTANCES SHOWN ARE GROUND LEVEL DISTANCES UNLESS NOTED AS GRID. TO CONVERT GROUND DISTANCES TO GRID DISTANCES MULTIPLY BY CLIMBERG (CALCULATED GRID/MEASURED GROUND). GRID COORDINATES FOR THE INTERIOR CORNER OF SECTION 6, AS MEASURED BY STATIC OBSERVATION, WERE HELD AS FIXED. (N=2015217.22, E=8473766.66)





LEGEND

	0.17\"/>
	0.17\"/>



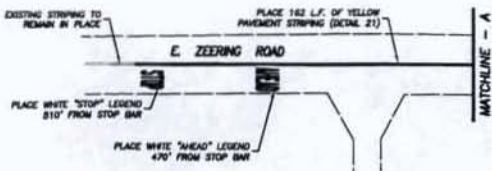
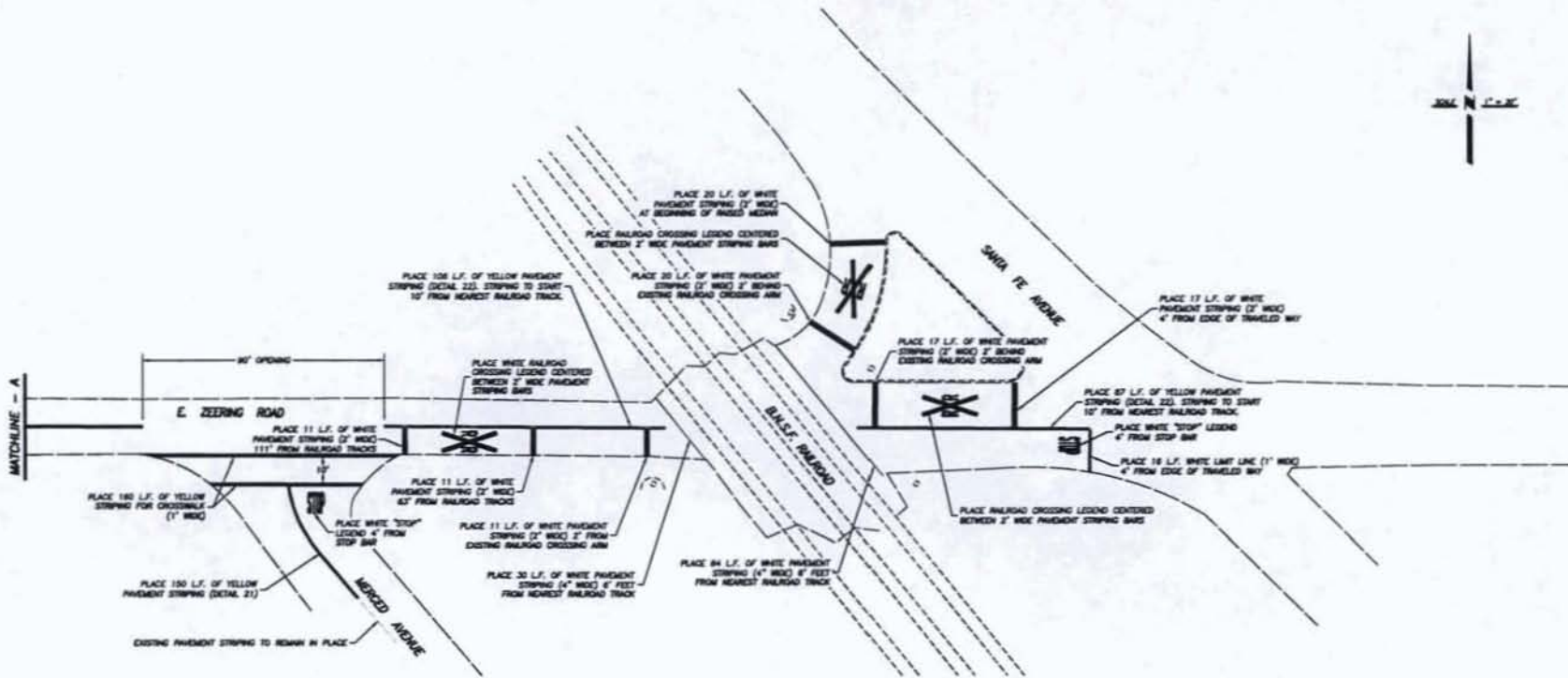
BASIS OF BEARINGS:
 COORDINATES AND BEARINGS ARE BASED ON THE CALIFORNIA COORDINATE SYSTEM NADEP, ZONE 3 (2002.00).
 A LINE BETWEEN MONUMENT CORNER (CMC) AND THE CONCRETE MONUMENT AT THE INTERIOR CORNER OF SECTION 8,
 TOWNSHIP 3 SOUTH, RANGE 9 EAST, (INTERSECTION OF ZEERING ROAD AND LESTER ROAD) BEARS SOUTH 54°04'48\"/>

STANISLAUS COUNTY
 DEPARTMENT OF PUBLIC WORKS
 HIGHWAYS AND OPERATIONS DIVISION
 1716 BAYVIEW ROAD - MODESTO, CA 95359

ZEERING ROAD LAYOUT PLAN
 IMPROVEMENT PLANS FOR
 BNSF RAILROAD CROSSING IMPROVEMENTS
 AT VARIOUS ROADS

JOB NO. 2243
 DATE: 01/25/11
 DR BY: SDC
 CR BY: JF
 SCALE: AS SHOWN

4
 OF 12 SHEETS



NOTES:

1. STRIPING AND PAVEMENT MARKINGS SHALL BE THERMOPLASTIC.
2. EXISTING PAVEMENT STRIPING AND MARKINGS SHALL BE REMOVED PRIOR TO OVERLAYING THE ROADWAY, EXCEPT AS NOTED ON THESE PLANS.



DATE:	12/11/11
BY:	HCW
CHECKED BY:	HCW
SCALE:	AS SHOWN

STANISLAUS COUNTY
 DEPARTMENT OF PUBLIC WORKS
 ENGINEERING AND OPERATIONS DIVISION
 1716 MORGAN ROAD - AKERSVILLE, CA 95230



ZEERING ROAD STRIPING PLAN
 IMPROVEMENT PLANS FOR:
**BNSF RAILROAD CROSSING IMPROVEMENTS
 AT VARIOUS ROADS**

JOB NO.	8243
DATE	02/03/11
DR BY	HCW
CX BY	HCW
SCALE	AS SHOWN

SHEET NUMBER
5
 OF 12 SHEETS





PROJECT NO.	1716
DATE	01/21/11
BY	NSW
CHECKED BY	NSW
SCALE	AS SHOWN

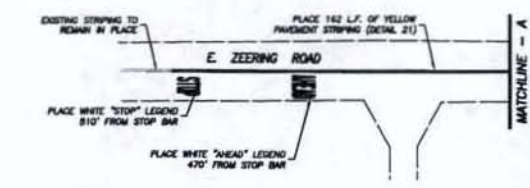
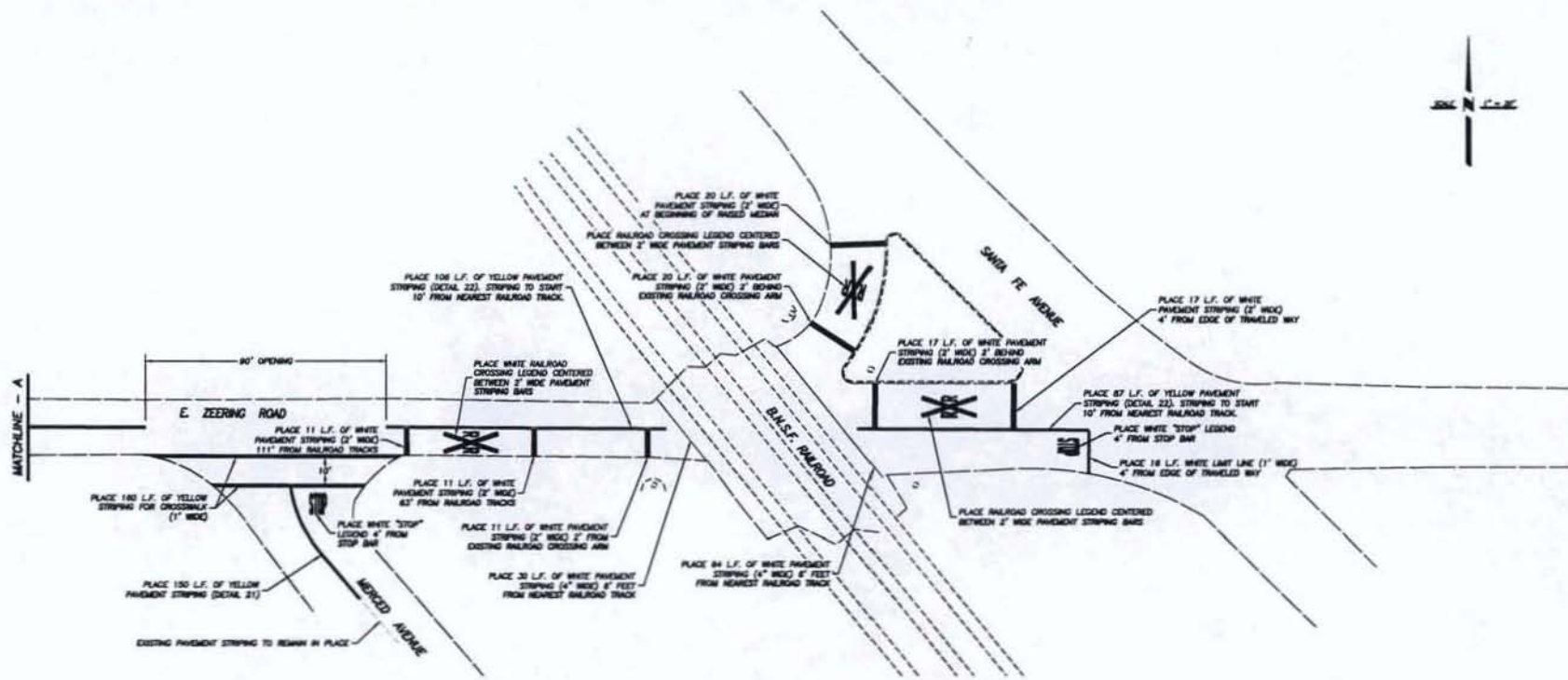
STANISLAUS COUNTY
 DEPARTMENT OF PUBLIC WORKS
 ENGINEERING AND OPERATIONS DIVISION
 1716 MCKOWN ROAD - MERCED, CA 95369



ZEERING ROAD CONSTRUCTION DETAILS
 IMPROVEMENT PLANS FOR
 BNSF RAILROAD CROSSING IMPROVEMENTS
 AT VARIOUS ROADS

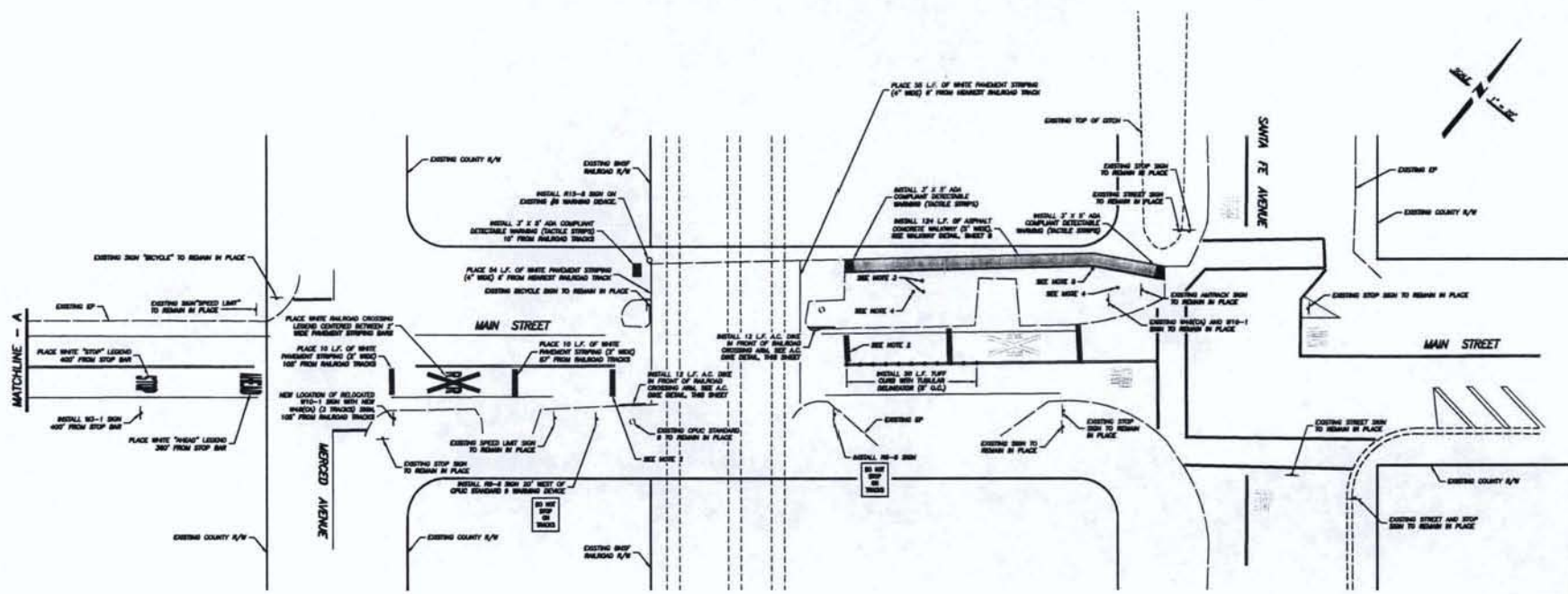
JOB NO.	2243
DATE	01/21/11
DR BY	NSW
CK BY	NSW
SCALE	AS SHOWN

SHEET
6
 OF 12 SHEETS



- NOTES:**
1. STRIPING AND PAVEMENT MARKINGS SHALL BE THERMOPLASTIC.
 2. EXISTING PAVEMENT STRIPING AND MARKINGS SHALL BE REPAIRED PRIOR TO OVERLAYING THE ROADWAY, EXCEPT AS NOTED ON THESE PLANS.

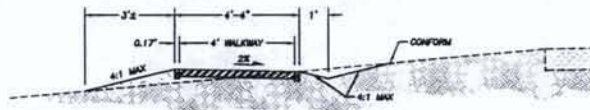
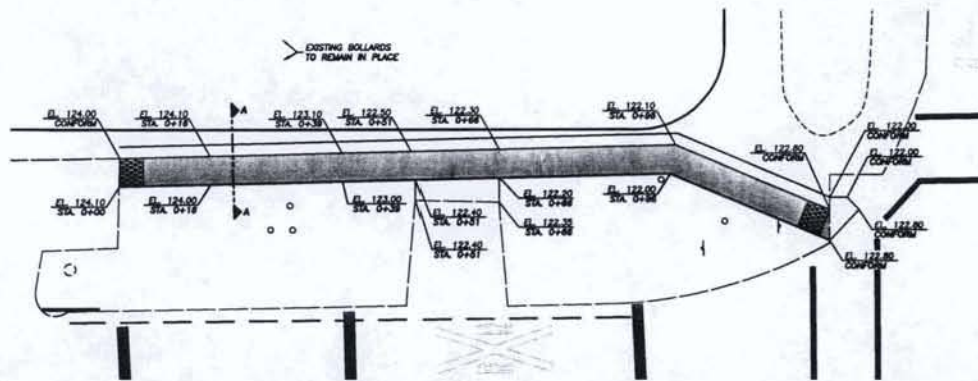




- NOTES:**
1. EXISTING STRIPING AND PAVEMENT MARKINGS SHALL REMAIN IN PLACE, EXCEPT WHERE NOTED.
 2. REMOVE EXISTING 1' WIDE PAVEMENT STRIPING AND PLACE 10' L.F. OF PAVEMENT STRIPING (2' WIDE)
 3. EXISTING BOLLARDS TO REMAIN IN PLACE.
 4. EXISTING POWER POLE TO REMAIN IN PLACE.
 5. EXISTING GUY ANCHOR TO REMAIN IN PLACE.

BASIS OF BEARINGS:
 COORDINATES AND BEARINGS ARE BASED ON THE CALIFORNIA COORDINATE SYSTEM NAD83, ZONE 3 (2011.05). A LINE BETWEEN MONUMENT DES248 (QMO2) AND THE CONCRETE MONUMENT AT THE INTERIOR CORNER OF SECTION 4, TOWNSHIP 3 SOUTH, RANGE 9 EAST, (INTERSECTION OF ZEEBING ROAD AND LESTER ROAD) BEARS SOUTH 54°04'45" EAST AS MEASURED BY STATIC OBSERVATION. ALL DISTANCES SHOWN ARE GROUND LEVEL DISTANCES UNLESS NOTED AS GRID. TO CONVERT GROUND DISTANCES TO GRID DISTANCES MULTIPLY BY 0.99994320 (CALCULATED GRID/MEASURED GROUND). GRID COORDINATES FOR THE INTERIOR SECTION CORNER OF SECTION 4, AS MEASURED BY STATIC OBSERVATION, WERE HELD AS FIXED. (N=2013217.32, E=6473788.54)





BASIS OF BEARINGS:

COORDINATES AND BEARINGS ARE BASED ON THE CALIFORNIA COORDINATE SYSTEM MODEL ZONE 3 (5002.00).
 A LINE BETWEEN MONUMENT DE2544 (C.M.C.) AND THE CONCRETE MONUMENT AT THE INTERIOR CORNER OF SECTION 4,
 TOWNSHIP 3 SOUTH RANGE 9 EAST, (INTERSECTION OF ZEPHYR ROAD AND LESTER ROAD) BEARS SOUTH 24°04'45" EAST
 AS MEASURED BY STATIC OBSERVATION. ALL DISTANCES SHOWN ARE GROUND LEVEL DISTANCES UNLESS NOTED AS GRID.
 TO CONVERT GROUND DISTANCES TO GRID DISTANCES MULTIPLY BY 0.99983020 (CALCULATED GRID/MEASURED GROUND).
 GRID COORDINATES FOR THE INTERIOR SECTION CORNER OF SECTION 4, AS MEASURED BY STATIC OBSERVATION, WERE
 HELD AS FIXED. (N=8115217.22, E=4672788.52)



DATE	DATE
BY	BY
CHECKED	CHECKED
SCALE	SCALE

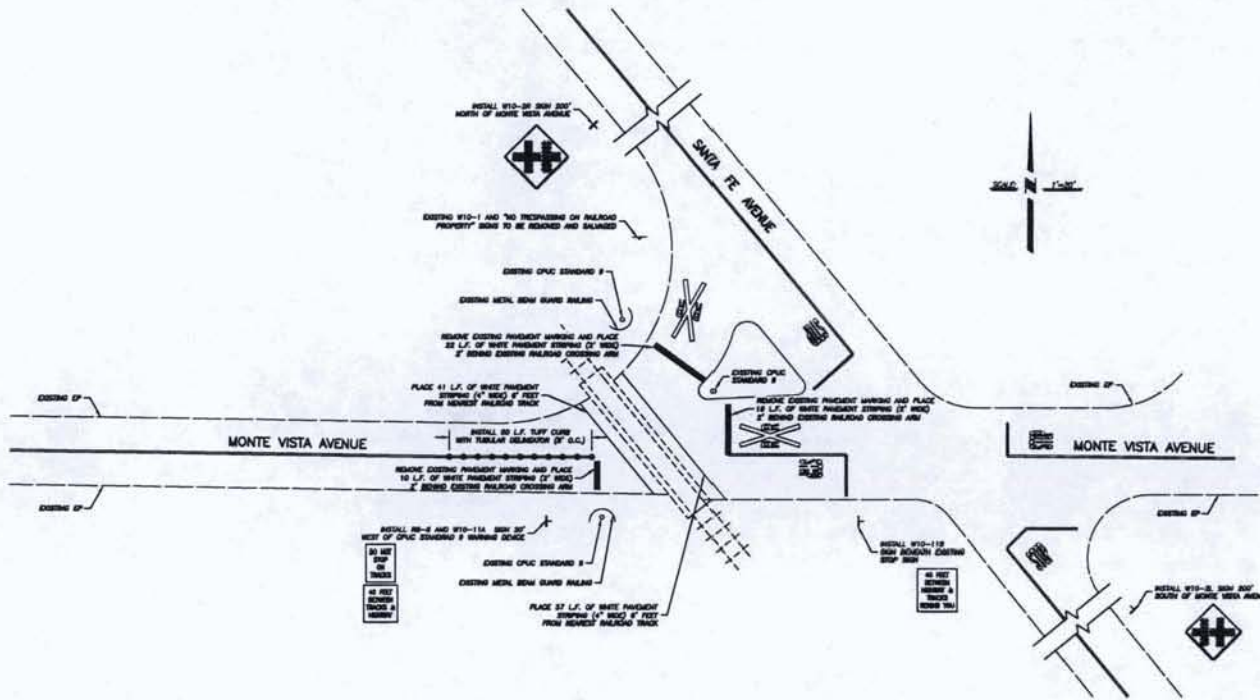
STANISLAUS COUNTY
 DEPARTMENT OF PUBLIC WORKS
 ENGINEERING AND OPERATIONS DIVISION
 1716 MCKAY ROAD - MARIETTA, CA 95309



MAIN STREET CONSTRUCTION DETAILS
 IMPROVEMENT PLANS FOR:
 BNSF RAILROAD CROSSING IMPROVEMENTS
 AT VARIOUS ROADS

JOB NO.	5343
DATE	02/05/11
DR BY	MCJ
CK BY	MCJ
SCALE	AS SHOWN

SHEET NUMBER
 8
 OF 12 SHEETS



- NOTES:**
1. STRIPING AND PAVEMENT MARKINGS SHALL BE THERMOPLASTIC.
 2. EXISTING PAVEMENT STRIPING AND MARKINGS SHALL BE REMOVED PRIOR TO OVERLAYING THE ROADWAY, EXCEPT AS NOTED ON THESE PLANS.



DATE:	02/25/11
BY:	NEW
FOR:	AS SHOWN
SCALE:	AS SHOWN

STANISLAUS COUNTY
 DEPARTMENT OF PUBLIC WORKS
 ENGINEERING AND OPERATIONS DIVISION
 1716 MORGAN ROAD - MARIETTA, CA 95558

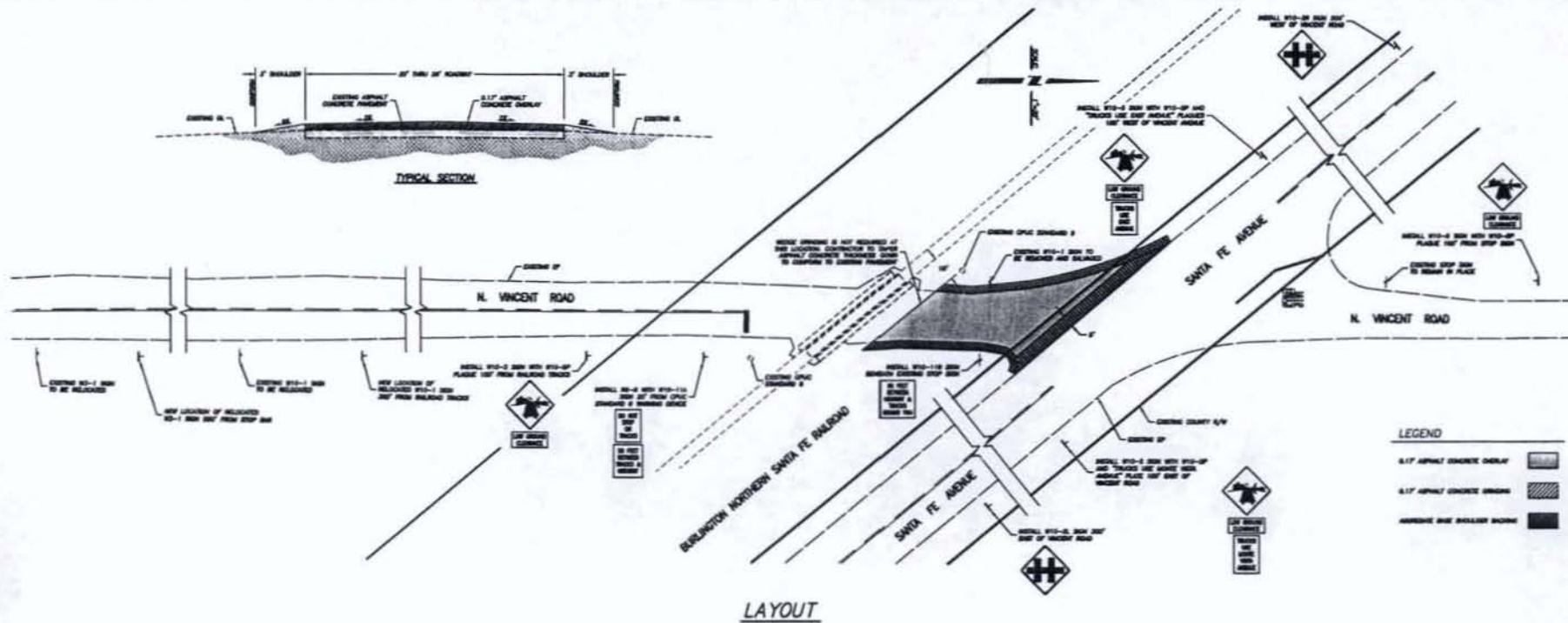
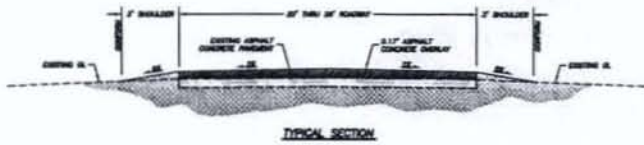


MONTE VISTA AVENUE LAYOUT PLAN
 IMPROVEMENT PLANS FOR
 BNSF RAILROAD CROSSING IMPROVEMENTS
 AT VARIOUS ROADS

JOB NO.	8243
DATE	02/25/11
DR BY	NEW
CK BY	BY
SCALE	AS SHOWN

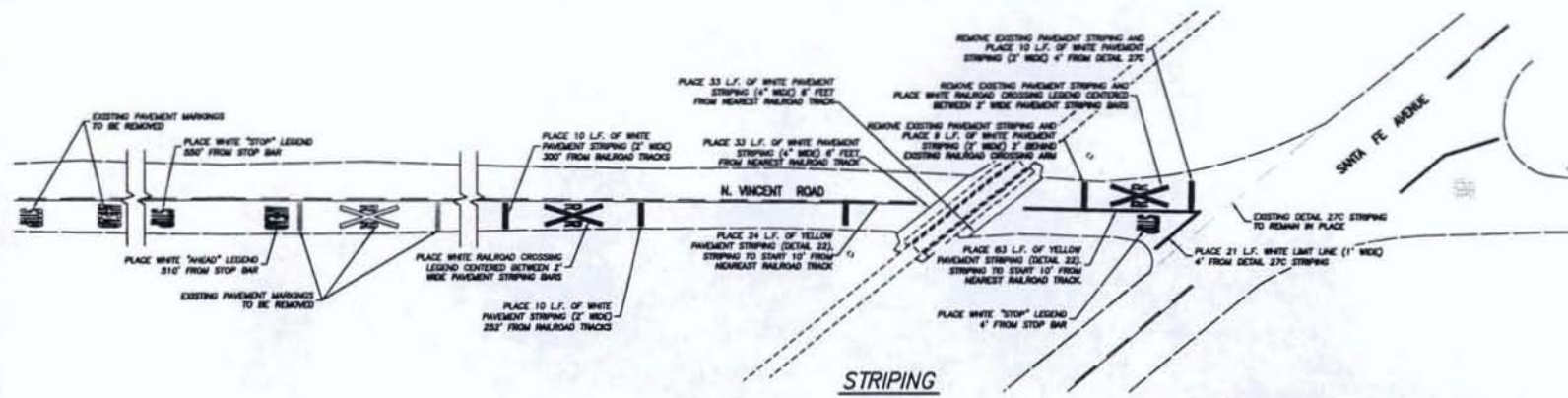


SHEET NUMBER
9
 OF 12 SHEETS



LEGEND

6.17 APICAL CONCRETE OVERLAY	
6.17 APICAL CONCRETE SHOULDER	
APICAL ONE SHOULDER SOLEM	



BASIS OF BEARINGS:
 COORDINATES AND BEARINGS ARE BASED ON THE CALIFORNIA COORDINATE SYSTEM NAD83, ZONE 3 (2002.00). A LINE BETWEEN NGS MONUMENT DE8246 (CMCO) AND THE CONCRETE MONUMENT AT THE INTERIOR CORNER OF SECTION 4, TOWNSHIP 3 SOUTH, RANGE 8 EAST, (INTERSECTION OF ZEEBING ROAD AND LESTER ROAD) BEARS SOUTH 84°04'47" EAST AS MEASURED BY STATIC OBSERVATION. ALL DISTANCES SHOWN ARE GROUND LEVEL DISTANCES UNLESS NOTED AS GRID. TO CONVERT GROUND DISTANCES TO GRID DISTANCES MULTIPLY BY A CORRECTION (CALCULATED FROM MEASURED GROUND). GRID COORDINATES FOR THE INTERIOR SECTION CORNER OF SECTION 4 AS MEASURED BY STATIC OBSERVATION WERE HELD AS FIXED. (N=3015217.32, E=4473788.54)



DATE	BY
REVISION	BY
NO.	DATE

STANISLAUS COUNTY
 DEPARTMENT OF PUBLIC WORKS
 ENGINEERING AND OPERATIONS DIVISION
 1716 MORGAN ROAD - MARIETTA, CA 95959

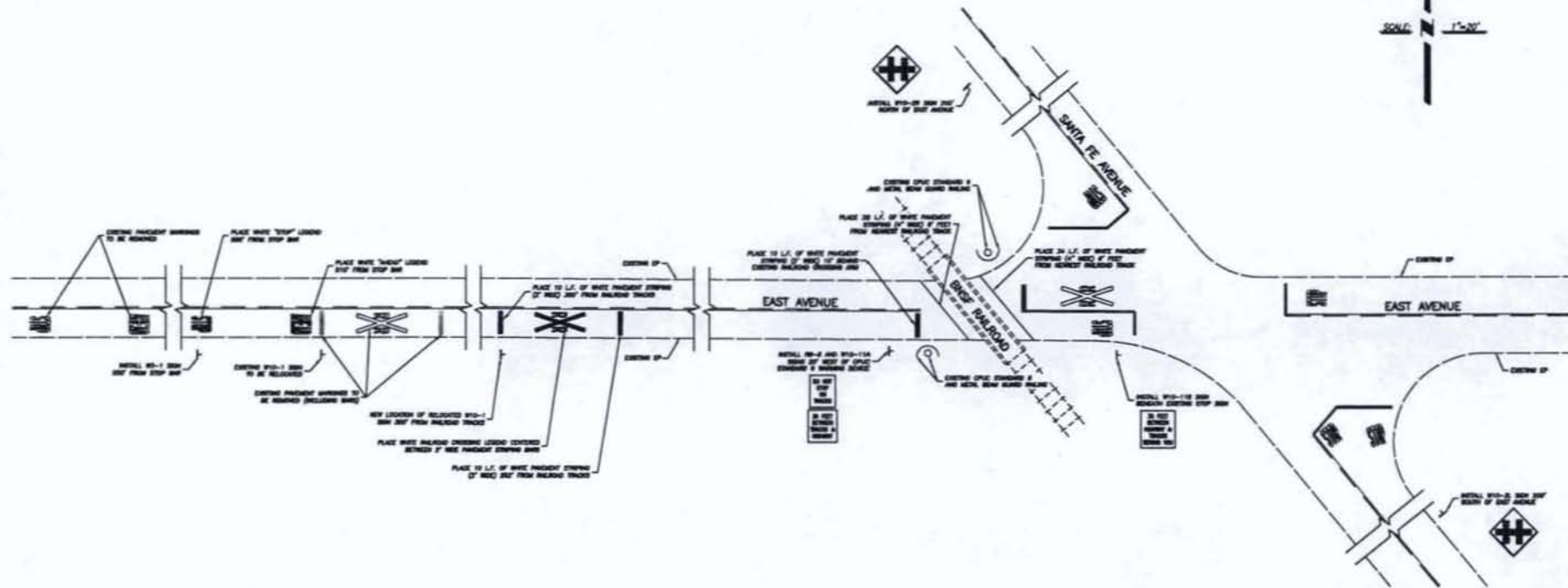


VINCENT ROAD LAYOUT & STRIPING PLAN
 IMPROVEMENT PLANS FOR
 BNSF RAILROAD CROSSING IMPROVEMENTS
 AT VARIOUS ROADS

JOB NO. 2243
 DATE 01/21/11
 DR BY RW
 CK BY JF
 SCALE AS SHOWN



SHEET NUMBER
 10
 OF 12 SHEETS



- NOTES:**
1. PAVEMENT MARKINGS SHALL BE THERMOPLASTIC.
 2. EXISTING PAVEMENT STRIPING AND MARKINGS SHALL BE REMOVED PRIOR TO OVERLAYING THE ROADWAY.

BASIS OF BEARINGS:

COORDINATES AND BEARINGS ARE BASED ON THE CALIFORNIA COORDINATE SYSTEM NAD83, ZONE 3 (NAD83). A LINE BETWEEN MONUMENT 28244 (CMO) AND THE CONCRETE MONUMENT AT THE INTERIOR CORNER OF SECTION 8, TOWNSHIP 3 SOUTH, RANGE 8 EAST, (INTERSECTION OF ZEPHYR ROAD AND LESTER ROAD) BEARS SOUTH 54°09'45" EAST AS MEASURED BY STATIC OBSERVATION. ALL DISTANCES SHOWN ARE GROUND LEVEL DISTANCES UNLESS NOTED AS GRID TO CONVERT GROUND DISTANCES TO GRID DISTANCES MULTIPLY BY 0.99999300 (CALCULATED GRID/MEASURED GROUND). GRID COORDINATES FOR THE INTERIOR SECTION CORNER OF SECTION 8, AS MEASURED BY STATIC OBSERVATION, WERE HELD AS FIXED. (N=2011217.32, E=4472796.24)



STANISLAUS COUNTY DEPARTMENT OF PUBLIC WORKS ENGINEERING AND OPERATIONS DIVISION 1716 MORROW ROAD - MCKENZIE, CA 95308	
EAST AVENUE LAYOUT PLAN IMPROVEMENT PLANS FOR BNSF RAILROAD CROSSING IMPROVEMENTS AT VARIOUS ROADS	
JOB NO. 2011 DATE: 08/25/11 DR BY: JES CR BY: JES SCALE: AS SHOWN	SHEET 11 OF 12 SHEETS

**DECLARATION OF PUBLICATION
(C.C.P. S2015.5)**

**COUNTY OF STANISLAUS
STATE OF CALIFORNIA**

I am a citizen of the United States and a resident Of the County aforesaid; I am over the age of Eighteen years, and not a party to or interested In the above entitle matter. I am a printer and Principal clerk of the publisher of **THE MODESTO BEE**, printed in the City of **MODESTO**, County of **STANISLAUS**, State of California, daily, for which said newspaper has been adjudged a newspaper of general circulation by the Superior Court of the County of **STANISLAUS**, State of California, Under the date of **February 25, 1951, Action No. 46453**; that the notice of which the annexed is a printed copy, has been published in each issue there of on the following dates, to wit:

Jul 11, 2011, Jul 18, 2011

INVITATION TO CONTRACTORS
Claribel Road at BNSF RR Crossing
Owner is Stanislaus County, Modesto CA;
Estimated construction cost for this project is \$15,000; Sealed bids are due before 2:00 P.M., July 27, 2011, to the Clerk of the Board of Supervisors, 1010 10th Street, Suite 6500, Modesto, CA 95354; Project contact is Aja Verburg at verburga@stancounty.com or Fax No. (209) 541-2509. Work to be accomplished includes installation of raised curb with delineators and placement of signs and thermoplastic pavement markings. Plans and specifications are available for purchase from Modesto Reprographics, Modesto CA, (209) 544-2400 and can be viewed at www.modestoplanroom.com under "Public Jobs."
Pub Dates July 11, 18, 2011

I certify (or declare) under penalty of perjury
That the foregoing is true and correct and that
This declaration was executed at

MODESTO, California on

September 23rd, 2011

(By Electronic Facsimile Signature)

Marie Hickmann