

THE BOARD OF SUPERVISORS OF THE COUNTY OF STANISLAUS
ACTION AGENDA SUMMARY

DEPT: Public Works *AM*

BOARD AGENDA # *C-2

Urgent Routine

AGENDA DATE September 15, 2009

CEO Concurs with Recommendation YES NO
(Information Attached)

4/5 Vote Required YES NO

SUBJECT:

Approval to Set a Public Hearing and Conduct a Ballot Procedure in Compliance with Proposition 218 on November 3, 2009 at 9:15 A.M. Regarding the Formation of the Marshall Avenue Lighting District and the Levy of a Specific Benefit Assessment

STAFF RECOMMENDATIONS:

1. Set a Public Hearing on November 3, 2009 at 9:15 A.M., or as soon thereafter as the matter may be heard, regarding the formation of the Marshall Avenue Lighting District and the levy of a specific benefit assessment.
2. Approve the Engineer's Report for the formation of the Marshall Avenue Lighting District.
3. Authorize an Assessment Ballot Procedure in conformance with Proposition 218 for the Marshall Avenue Lighting District and notice given pursuant to Government Code Section 53753(B).

(Continued on Page 2)

FISCAL IMPACT:

Ongoing operation and maintenance costs associated with the Marshall Avenue Lighting District will be borne by the district once established. Initial start-up costs for the said district are estimated to be \$3,200 and include the first year's utility cost of \$1,400, State Board of Equalization filing fee of \$800, and administration costs of \$1,000. These costs will be covered through the use of Community Development Funds as approved by the Board of Supervisors on September 1, 2009.

BOARD ACTION AS FOLLOWS:

No. 2009-632

On motion of Supervisor Grover, Seconded by Supervisor Monteith

and approved by the following vote,

Ayes: Supervisors: O'Brien, Chiesa, Grover, Monteith, and Chairman DeMartini

Noes: Supervisors: None

Excused or Absent: Supervisors: None

Abstaining: Supervisor: None

1) X Approved as recommended

2) _____ Denied

3) _____ Approved as amended

4) _____ Other:

MOTION:

Christine Ferraro

ATTEST: CHRISTINE FERRARO TALLMAN, Clerk

File No. DL-44-2

Approval to Set a Public Hearing and Conduct a Ballot Procedure in Compliance with Proposition 218 on November 3, 2009 at 9:15 A.M. Regarding the Formation of the Marshall Avenue Lighting District and the Levy of a Specific Benefit Assessment

4. Order that the Notice of the Public Hearing be given pursuant to the Highway Lighting District Act Code Section 19050.

DISCUSSION:

The proposed formation of the Marshall Avenue Lighting District is located between Truman Avenue and California Avenue in a County pocket in the west side of Modesto. The proposed 12.89 acre formation will operate and maintain a total of five (5) 150 watt Sodium-Vapor lights that are to be installed by the Modesto Irrigation District.

The lighting district is being established per a request from the landowners within the proposed boundary with support from the Office of Supervisor Jeff Grover. The proposed lighting district will generate funds to pay for the operation and maintenance of the streetlights. Supervisor Grover and staff have contacted a majority of the owners of the property within the proposed boundary of the Marshall Avenue Lighting District and the property owners have consented to the said district by signing a petition in support of the proposal.

The streetlights will only provide a special benefit to the parcels within the district. Stanislaus County does not provide street lighting to unincorporated areas without the formation of a lighting district; therefore, no general benefit has been assigned to the assessment calculation.

Proposition 218 was a statewide initiative approved by the voters in November, 1996. It required that the property owners of the proposed district or the existing district, through a ballot procedure, approve specific benefit assessments and any increase of the said assessment. The assessment ballot will be mailed out with a notice of the proposed assessment. This notice will describe the specific benefit of the proposed district, the total amount thereof chargeable to the entire district, the amount chargeable to the owners' particular parcel, the duration of the payments, the basis upon which the amount of the proposed assessment was calculated, together with the date, time, and location of the public hearing.

The operation and maintenance costs will include all expenses associated with the annual assessment of the streetlights in accordance to the Modesto Irrigation District utility costs. All of the lights within the proposed district will be owned and maintained by the Modesto Irrigation District. The assessment formula includes a charge to cover administration costs and to create and maintain an operational reserve. The reserve will be used to pay for the first six (6) months operating costs and/or unexpected or emergency expenses incurred by the district that were neither contemplated nor estimated as part of the district operation and maintenance.

If the district operation and maintenance costs are less than expected, the fund balance will be carried forward to reduce the amount needed to be collected the following year. Although some special districts receive a portion of the property tax collected by the County, the district is not expected to receive a portion of the property tax revenue in the future. However, if the district does receive any property tax revenue in the future, it will reduce or offset the amount of operation and maintenance costs that must be collected by the annual assessment.

Approval to Set a Public Hearing and Conduct a Ballot Procedure in Compliance with Proposition 218 on November 3, 2009 at 9:15 A.M. Regarding the Formation of the Marshall Avenue Lighting District and the Levy of a Specific Benefit Assessment

The formula to calculate the annual assessment is as follows:

AMOUNT OF ANNUAL ASSESSMENT LEVIED: (Estimated Operations and Maintenance) plus (Administration and Operational Reserve costs) minus (Fund Balance from the previous year and the Estimated Assessment Revenue for Current Year).

The formula used to calculate the proportional benefit to each parcel within the district begins with a basic Equivalent Benefit Unit (EBU). From this base unit, parcels are analyzed according to their actual equivalent benefit within the district.

If the district is formed and the formula approved, the total amount of assessments chargeable to the district in Fiscal Year 2010-2011 will be \$1,518. Specifically, each residential parcel receives 1.0 EBU's (see table in the attached Engineer's Report) and Parcel 030-009-015 receives 2.2 EBU's per acre. The total acreage of all the parcels within the district is 12.89 acres. The total EBU's within the district is 35.51 (33 + 2.51). Using the formula listed above, the levied amount for this district is a total of \$42.75 per EBU. Therefore, the assessment for the residential parcels would be \$42.75 and for parcel 030-009-015 would be \$107.22 for the fiscal year. The total amount of the annual assessment that would be levied against each parcel for the 2010-2011 Tax Year is shown on Exhibit "C" of the Engineer's Report.

The fiscal year is the 12-month period commencing on July 1st and ending on the following June 30th. However, the assessments are collected in December and April. This means the fiscal year starts on July 1st but the first installment of the assessments will not be collected until December. This creates a 6-month lag in receiving the money necessary to operate and maintain the streetlights. Therefore, a sufficient amount of money collected by the assessments will be carried forward as a general reserve. Initially, in order to operate the district, the first years operating costs for the streetlights will be funded by the county through the use of Community Development Funds, if the formation is approved. This will provide the source of revenue so the streetlights may be energized this winter.

The purpose of the annual assessment is to provide a continued source of funding for the Marshall Avenue Lighting District.

POLICY ISSUES:

The State of California Streets and Highway Code Section 19030 authorizes the Board of Supervisors to establish lighting districts. The Board should consider if the recommended action is consistent with its priorities of providing a safe community and a well-planned infrastructure system.

Approval to Set a Public Hearing and Conduct a Ballot Procedure in Compliance with Proposition 218 on November 3, 2009 at 9:15 A.M. Regarding the Formation of the Marshall Avenue Lighting District and the Levy of a Specific Benefit Assessment

STAFFING IMPACT:

There is no staffing impact associated with this item.

DF/DH/RM:lc

H:\Denny Ferreira\Proposals\Marshall Proposal\Board Items\Set A Public Hearing\Marshall Board Item

NOTICE OF HEARING REGARDING FORMATION OF
THE MARSHALL AVENUE LIGHTING DISTRICT
AND THE LEVY OF AN ANNUAL ASSESSMENT

NOTICE IS HEREBY GIVEN that on Tuesday, November 03, 2009, at the hour of 9:15 A.M., or as soon thereafter as the matter may be heard, in the Joint Chambers located in the basement of the City/County Administration Building, 1010 10th Street, Modesto, California, the Board of Supervisors of Stanislaus County will hold a public hearing regarding formation of the Marshall Avenue Lighting District, ballot procedure, and the levy of an annual assessment on the parcel of land within proposed district. The Marshall Avenue Lighting District will contain all that certain real property in the County of Stanislaus, State of California, particularly described as follows:

All that certain real property situated in the State of California, County of Stanislaus, being a portion of Section 31, Township 3 South, Range 9 East, Mount Diablo Base and Meridian described as follows:

Commencing at the northeast corner of the southeast one-quarter corner of Section 31 said point being the southwest corner of Lot 15 Spencer Colony as per map filed on December 16, 1904 in Volume 2 of Maps at page 3 Stanislaus County Records, thence North 89°37'03" West along the east-west one-quarter line of Section 31, a distance of 665.68 feet to the southeast corner of Lot 14 Spencer Colony, thence North 00°36'14" East 10.00 feet to the **TRUE POINT BEGINNING** of this description said point being the intersection of the north line of California Avenue with the centerline of Briggs Ditch St. and being the north easterly corner of California –Marshall Reorganization, thence (1) North 89°37'03" West, 25.21 feet ,thence (2) along said Reorganization North 00°36'22" East a distance of 30.00 feet along the north line of California Avenue, Thence (3) North 89°39'03" West a distance of 152.95 feet to a point and the beginning of a non-tangent curve from which radial line bears South 89°23'03" East, thence (4) northwesterly along said non-tangent curve, concave to the northeast having a radius of 15.00 feet through a central angle of 90°14'00" an arc distance of 23.62 feet to a point on the north line of said California Avenue, thence (5) North 89°23'03" West a distance of 55.00 feet, thence (6) South 0°36'57" West a distance of 25.75 feet, thence (7) North 89°37'03" West a distance of 186.00 feet, thence (8) leaving said north line of California Avenue North 00°02'00" East of 1281.56 feet to the centerline of Truman Avenue, thence (9) along the center line of Truman Avenue South 89°37'03" East, a distance of 433.71 feet to the northwest corner of Lot 9 Spencer Colony, thence (10) South 0°02'00" West, a distance of 1300.68 feet to the true point beginning of this description.

Containing an Area=12.89 Acres

EXHIBIT "A"

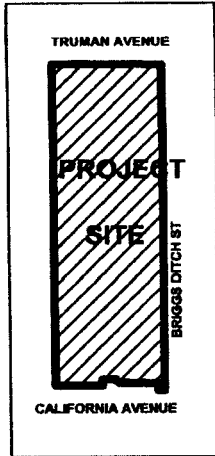
MARSHALL AVENUE LIGHTING DISTRICT FORMATION

All that certain real property situated in the State of California, County of Stanislaus, being a portion of Section 31, Township 3 South, Range 9 East, Mount Diablo Base and Meridian described as follows:

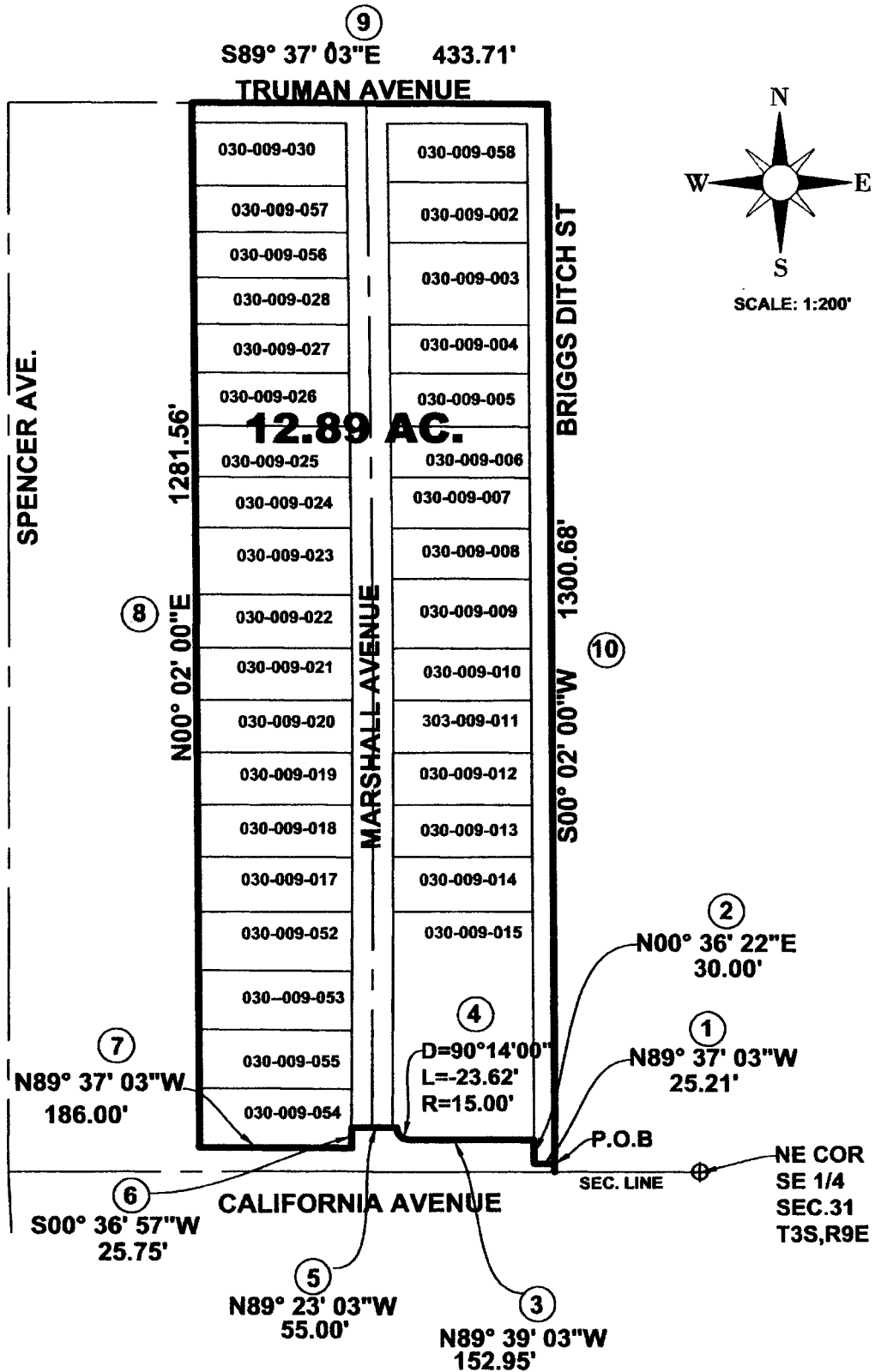
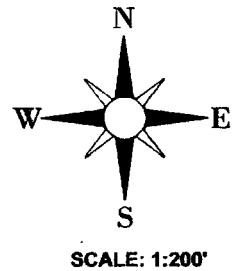
Commencing at the northeast corner of the southeast one-quarter corner of Section 31 said point being the southwest corner of Lot 15 Spencer Colony as per map filed on December 16, 1904 in Volume 2 of Maps at page 3 Stanislaus County Records, thence North $89^{\circ}37'03''$ West along the east-west one-quarter line of Section 31, a distance of 665.68 feet to the southeast corner of Lot 14 Spencer Colony, thence North $00^{\circ}36'14''$ East 10.00 feet to the **TRUE POINT BEGINNING** of this description said point being the intersection of the north line of California Avenue with the centerline of Briggs Ditch St. and being the north easterly corner of California - Marshall Reorganization, thence (1) North $89^{\circ}37'03''$ West, 25.21 feet, thence (2) along said Reorganization North $00^{\circ}36'22''$ East a distance of 30.00 feet along the north line of California Avenue, Thence (3) North $89^{\circ}39'03''$ West a distance of 152.95 feet to a point and the beginning of a non-tangent curve from which radial line bears South $89^{\circ}23'03''$ East, thence (4) northwesterly along said non-tangent curve, concave to the northeast having a radius of 15.00 feet through a central angle of $90^{\circ}14'00''$ an arc distance of 23.62 feet to a point on the north line of said California Avenue, thence (5) North $89^{\circ}23'03''$ West a distance of 55.00 feet, thence (6) South $0^{\circ}36'57''$ West a distance of 25.75 feet, thence (7) North $89^{\circ}37'03''$ West a distance of 186.00 feet, thence (8) leaving said north line of California Avenue North $00^{\circ}02'00''$ East of 1281.56 feet to the centerline of Truman Avenue, thence (9) along the center line of Truman Avenue South $89^{\circ}37'03''$ East, a distance of 433.71 feet to the northwest corner of Lot 9 Spencer Colony, thence (10) South $0^{\circ}02'00''$ West, a distance of 1300.68 feet to the true point beginning of this description.

Containing an Area=12.89 Acres

EXHIBIT "B"



VICINITY MAP
NOT TO SCALE



MARSHALL AVENUE LIGHTING DISTRICT FORMATION		STANISLAUS COUNTY DEPARTMENT OF PUBLIC WORKS	
BEING A PORTION OF THE NE QUARTER OF THE SE QUARTER SECTION 31, T3 S, R 9 EAST M.D.B.M.		SCALE: 1"=200'	DATE: 08-07-2009
		DRAWN BY: NCW CHECKED BY: LF	



DEPARTMENT OF PUBLIC WORKS

Matt Machado, PE
Director

Laurie Barton, PE
Deputy Director, Engineering/Operations

Diane Haugh
Assistant Director, Business/Finance

1010 10th Street, Suite 3500, Modesto, CA 95354
Phone: 209.525.6550/email: publicworks@stancounty.com

**MARSHALL AVENUE LIGHTING DISTRICT
ENGINEERS REPORT**

MODESTO

FISCAL YEAR 2009/2010

SET HEARING: SEPTEMBER 15, 2009
PUBLIC HEARING: NOVEMBER 3, 2009

TABLE OF CONTENTS

ENGINEER'S REPORT AFFIDAVIT	3
INTRODUCTION	4
PART I – PLANS AND SPECIFICATIONS	4
A. Description of the Service Area	4
B. Description of Improvements and Services	4
PART II – METHOD OF APPORTIONMENT	5
A. Benefit Analysis	5
B. Assessment Methodology	5
C. Budget Formula	8
PART IV – SERVICE AREA BUDGET	10
PART V – ASSESSMENTS	11
EXHIBIT A – BOUNDARY MAP	
EXHIBIT B – ASSESSOR MAPS	
EXHIBIT C – PARCEL LIST	

ENGINEER'S REPORT AFFIDAVIT


County of Stanislaus, State of California

Marshall Avenue Lighting District

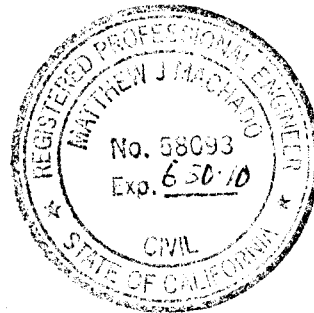
This report describes the district and all relevant zones therein including the budget(s), parcels and assessments to be levied for the fiscal year 2009/2010. Reference is hereby made to the Stanislaus County Assessor's maps for a detailed description of the lines and dimensions of parcels within the Lighting District (LD)

The undersigned respectfully submits the enclosed report as directed by the Board of Supervisors.

Dated this 27TH day of AUGUST, 2009



MATT MACHADO, DIRECTOR, PE
Stanislaus County Department of Public Works



**MARSHALL LIGHTING DISTRICT
ANNUAL ENGINEER'S REPORT
FISCAL YEAR 2009/2010**

INTRODUCTION:

The Marshall Lighting District is being established under the California Street and Highway Code Section 19030, per a request set forth by the parcel owners within the legal boundaries of said district and Supervisor Jeff Grover. The formation of this district is to generate funds to pay for the operation and maintenance of streetlights for the Marshal Avenue developed area between California and Truman in West Modesto. The legal description and the boundary of the district is shown on Exhibit "A" and "B".

PART I- PLANS AND SPECIFICATIONS

A. Description of the Lighting District

There are 34 parcels, on 12.89 acres, within the boundaries of this proposed district. All parcels except one are used for residential purposes. The single parcel that is not a residence has an approximate size of 1.14 acres.

B. Description of Improvements and Services

The purpose of this Lighting District is to provide streetlights that will improve the area by deterring crime, promoting traffic safety and aiding law enforcement efforts in this designated area. The special benefit assessments to be levied for this district are intended to provide a revenue source for all the maintenance, and servicing of the service area's improvements including, but not limited to the materials, equipment, labor and administrative expenses. However, the assessments are not intended to fund reconstruction or major renovations of the improvements and facilities. The improvements are to be owned and maintained by The Modesto Irrigation District and funded entirely through the service areas assessments, and are generally described as:

- Operate and maintain a total of five (5) lights, 150 watt sodium vapor luminaries.
- Periodic inspection, maintenance, and bulb replacement as needed.

PART II- METHOD OF APPORTIONMENT

A. Benefit Analysis

The method of apportionment described in this report for allocation of

special benefit assessments utilizes commonly accepted engineering practices. The formula used for calculating assessments reflects the composition of the parcels and improvements provided to fairly apportion the costs based on special benefits to each parcel. Furthermore, pursuant to the Constitution Article XIID Section 4, a parcel's assessment may not exceed the reasonable cost of the proportional special benefit conferred on that parcel and a parcel may only be assessed for special benefits received.

All the improvements and services associated with the lighting District, have been identified as necessary, required and/or desired for the orderly development of the properties within the district to their full potential and consistent with the proposed development plans. As such, these improvements would be necessary and required of individual property owners for the development of such properties. The ongoing operation, servicing and maintenance of the improvements and facilities would be the financial obligation of those properties. Therefore, the streetlights, and the annual costs of ensuring the maintenance and operation of these improvements provide special benefits to the properties within the Marshall Lighting District.

Each equivalent benefit unit represents an equal proportional benefit from the streetlights. The streetlights only provide a special benefit to the parcels within the Marshall Lighting District, therefore, no general benefit has been assigned.

B. Assessment Methodology

The method of apportionment for the Lighting District (LD) calculates the receipt of special benefits from the respective improvements based on the actual or the proposed land use of the parcels within the district. The special benefit received by each lot or parcel is equated to the overall land use of the parcels within the LD based on the parcel's actual land use or proposed development.

Upon review of the proposed improvements it has been determined that each of the residential parcels within the LD receives special benefits from all of the improvements to be funded by annual assessments. The parcels within the LD may be identified by one of the following land use classifications and is assigned a weighting factor known as Equivalent Benefit Unit (EBU). The EBU calculated for a specific parcel defines the parcel's proportional special benefits from the LD's improvements, facilities and services.

Equivalent Benefit units (EBU):

To assess benefits equitably it is necessary to relate each property's proportional special benefits to the special benefits of all other property in the LD. The EBU method of apportioning assessments uses the single-family home site as the basic unit of assessment. A single-family home

site equals one EBU. All other land uses are converted to EBU's based on an assessment formula that equates the property's specific development status, type of development (land use) and size of property, as compared to a single-family home site.

The EBU method of apportioning special benefits is typically seen as the most appropriate and equitable assessment methodology, as the benefits to each parcel from the improvements are apportioned as a function of land use type, size and development. Not all land use types described in the following are necessarily applicable to the development of properties within the LD, but are presented for comparison purposes to support the proportional special benefit applied to those land use types within the district.

EBU Application by Land Use:

Single Family Residential- This land use is defined as a fully subdivided residential home site with or without structure. This land use is assessed 1.00 EBU per parcel or lot. This is the base value that all other properties are compared and weighted against.

Multi-family Residential- This land use is defined as a fully subdivided residential parcel that has more than one residential unit developed on the property typically includes apartments, duplexes, triplex etc. It does not typically include condominiums, town-homes, or mobile home parks). Based on average population densities and the size of the structure as compared to a typical single family residential unit, multi-family residential parcels shall be proportionally assessed for the parcels total number of residential units utilizing a sliding benefit scale. Although multi-family properties typically receive similar benefits to that of a single family residential, it would not be reasonable to conclude that on a per unit basis, the benefits are equal. Studies have consistently shown that the average multi-family unit impacts infrastructure approximately 75% as much as a single family residence (sample sources: Institute of transportation Engineers Informational report Trip Generation, Fifth Edition; Metcalf and Eddy, Wastewater Engineering Treatment, Disposal, Reuse, Third Addition). These Various studies indicate the most public improvements and infrastructure are utilized and impacted at reduced levels by multi-family residential units and a similar reduction in proportional benefit is appropriate. Furthermore, it is also reasonable to conclude that as the density (number of units) increases, the proportional benefit per unit tends to decline because the unit size and people per unit usually decreases. Based on these considerations and the improvements provided by the LD, it has been determined that an appropriate allocation of special benefit for multifamily residential properties as compared to a single family residential is best represented by the following special benefit assignment: 0.75 EBU per unit for the first 5 units; 0.50 EBU per unit for units 6 through 50: and 0.25 EBU per unit for all remaining units.

Condominium/Town-Home Units- Condominiums and town-homes tend

to share attributes of both a single family residential and multi-family residential properties and for this reason are identified as a separate land use classification. Like most single family residential properties, these properties are not usually considered rental property and generally, the County assigns each unit a separate APN or assessment number. However, condominiums and town homes often have similarities to multi-family residential properties in that they are generally zoned medium to high density and in some cases may involve multiple units on a single APN. In consideration of these factors it has been determined that an appropriate allocation of special benefit for condominiums, town-homes and similar residential properties is best represented by an assignment of 0.75 EBU pr unit regardless of whether each unit is assigned an individual APN or there are multiple units assigned to the APN. There is no adjustment factor with parcels with more than five units.

Planned-Residential Development- This land use is defined as any property for which a tentative or final tract map has been filed and approved (a specific number of residential lots and units has been identified) and the property is expected to be subdivided within the fiscal year or is part of the overall improvement and development plan for the LD. This land use classification often times involves more than a single parcel (e.g. the approved tract map encompasses more than a single APN). Each parcel that is part of the approved tract map shall be assessed proportionally for the proposed or estimated residential type and units to be developed on that parcel as part of the approved tract map. Accordingly, each parcel is assigned an appropriate number of benefit units that reflects the development of that property at build-out (the EBU assigned to each parcel shall represent the combination of single family, condominium, multifamily units to be developed).

Exempt Parcels- This land use identifies properties that are not assessed and are assigned 0.00 EBU. This land use classification may include but is not limited to:

- Lots or parcels identified as public streets and other roadways (typically not assigned an APN by the County)
- Private properties that cannot be developed independently for an adjacent property, such as common areas, bifurcated lots or properties with very restrictive development use

These types of parcels are considered to receive little or no benefit from the improvements and are therefore exempted from assessment.

Special Cases- in many LD's where multiple land use classifications are involved, there is usually one or more properties that the standard land use classifications or usual calculation of benefit will not accurately identify the special benefits received from the improvements. For example, a parcel may be identified as a vacant residential property, however only a small percentage of the parcel's total acreage can actually be developed. In this case, an appropriate calculation would be

based on the net acreage that can be utilized rather than the gross acreage of the parcel. The following table provides a summary of land use types, the EBU factors used to calculate each parcels individual EBU as outlined above.

Land use and Equivalent benefit units

Property type	EBU	Multiplier
Single Family Residential	1.00	Per unit/lot(parcel)
Multi-Family Residential	0.75	Per unit for the first 5 units
	0.50	Per unit for units 6 thru 50
	0.25	Per units > 50
Condominium/Town- Home Units	0.75	Per Unit
Planned Residential Development	1.00	Per planned Residential lot
	0.75	Per planned Condominium
	0.75	Per unit for the first 5 units
	0.50	Per unit for units 6-50
	0.25	Per unit >50
Vacant/Undeveloped Residential Land	1.00	Per Acre
Public Park	0.40	Per Acre
Public Storm Drain Basin	0.40	Per Acre
Public School/Congregations	2.20	Per Acre
Commercial/Industrial Parcel	3.50	Per Acre
Undeveloped Commercial/industrial Parcel	1.00	Per Acre
Rural/ Agricultural	1.00	Per Acre
Exempt Parcels	0.00	Per parcel

C. Budget Formula

The following formula is used to calculate each parcel's EBU (proportional benefit):

$$\text{Parcel Type EBU} \times \text{Acres or Units} = \text{Parcel EBU}$$

The total number of EBU's is the sum of all individual EBU's applied to parcels that receive special benefit from the improvements. An assessment amount per EBU (assessment rate) for the improvements is established by taking the total cost of the improvements and dividing the amount by the total number of EBU's of all benefiting parcels from the improvements. The rate is then applied back to each parcel's individual EBU to determine the parcels proportionate benefit and assessment obligation for the improvements.

The formula that will be used to calculate the annual assessment, approved with the proposition 218-ballot procedure, will be the following:

**(Estimated Operation & Maintenance Costs for Current year) + (Estimated Dry
Period Reserve for Next Year) – (Fund Balance From Previous Year) – (Estimated
Property Tax Revenue For Current Year) = Total Balance to Levy**

EBU X Total Parcels = Total EBU's

Total Balance to Levy/ Total EBU's = Levy per EBU

Levy per EBU x Parcel EBU (parcel acreage x EBU) = Parcel Levy Amount

The fiscal year is the 12-month period commencing on July 1 and ending on the following June 30. However, the assessments are collected in December and April. This means the fiscal year starts on July 1 but the first installment of the assessments will not be collected until December. This creates a 6-month lag in receiving the money necessary to operate and maintain the streetlights. Therefore, a sufficient amount of money collected by the assessments will be carried forward as a general reserve. Initially, in order to operate the district, the representative of the proposed district is required to deposit the first years operating costs for the streetlights, State Board of Equalization fee, and staffing costs associated with forming the district. These funds for this formation are provided from the Community Development Fund. This fund has been established to providing funding for "one-time projects or programs benefiting the unincorporated area that demonstrates strong local support and commitment and a general public benefit. This will provide the source of revenue so the streetlights may be energized when acceptance is granted from the State Board of Equalization.

Using the current Modesto Irrigation District Schedule (lighting district "owned" lights) rate of \$23.00 per month for a 150 watt High Pressure Sodium street lights. With the addition of administration costs the total estimated costs to operate the proposed district is \$1,518 per year.

EXPENSE DESCRIPTION	TOTAL BUDGET
ADMINISTRATION	
County Administration	\$138
Miscellaneous/Other Admin Fees	\$0
Total	\$138
UTILITY DISTRICT	
Utilities/Street Lights	\$1,380
Total	\$1,380
Capital Improvement Reserve	\$0
Total Administration, and District Budget	\$1,518
Fund Balance Information	
Beginning Fund Balance (Estimated for 2008/09)	\$1,518
Capital Improvement Reserve (-)	\$0
Available Fund Balance	\$1,518
Adjustments to Available Fund Balance	
General Fund (or PW) Loan Repayment/Advance (+)	\$0
Other Revenues/General Fund (Contributions i.e. Grants) (+)	\$0
Capital Improvement Expenditure (pumps etc.) (-)	\$0
6 Months Operating Reserve (-)	\$759
Total Adjustments	\$759
Remaining Available Fund Balance	\$759
Total Administration, and District Budget	\$1,518
Use of Fund Balance (-)	\$0
Balance to Levy	\$1,518
District Statistics	
Total Parcels	34
Total EBU	35.51
Assessment per EBU	\$42.75

EXHIBIT "C"

MARSHALL LIGHTING DISTRICT FISCAL YEAR ASSESSMENT

The Assessor's parcels listed below are subject to the annual assessment:

A.P.N.	ACREAGE	E.B.U.	ASSESSMENT
		2010-11	2010-11
030-009-002		1.00	\$42.75
030-009-003		1.00	\$42.75
030-009-004		1.00	\$42.75
030-009-005		1.00	\$42.75
030-009-006		1.00	\$42.75
030-009-007		1.00	\$42.75
030-009-008		1.00	\$42.75
030-009-009		1.00	\$42.75
030-009-010		1.00	\$42.75
030-009-011		1.00	\$42.75
030-009-012		1.00	\$42.75
030-009-013		1.00	\$42.75
030-009-014		1.00	\$42.75
030-009-015	1.14	2.51	\$107.22
030-009-017		1.00	\$42.75
030-009-018		1.00	\$42.75
030-009-019		1.00	\$42.75
030-009-020		1.00	\$42.75
030-009-021		1.00	\$42.75
030-009-022		1.00	\$42.75
030-009-023		1.00	\$42.75
030-009-024		1.00	\$42.75
030-009-025		1.00	\$42.75
030-009-026		1.00	\$42.75
030-009-027		1.00	\$42.75
030-009-028		1.00	\$42.75
030-009-030		1.00	\$42.75
030-009-052		1.00	\$42.75
030-009-053		1.00	\$42.75
030-009-054		1.00	\$42.75

EXHIBIT "C"

**MARSHALL LIGHTING DISTRICT
FISCAL YEAR ASSESSMENT**

The Assessor's parcels listed below are subject to the annual assessment:

<u>A.P.N.</u>	<u>ACREAGE</u>	<u>E.B.U.</u>	<u>ASSESSMENT</u>
		2010-11	2010-11
030-009-055		1.00	\$42.75
030-009-056		1.00	\$42.75
030-009-057		1.00	\$42.75
030-009-058		1.00	\$42.75
		<hr/>	<hr/>
		35.51	\$1,517.97

EXHIBIT "A"

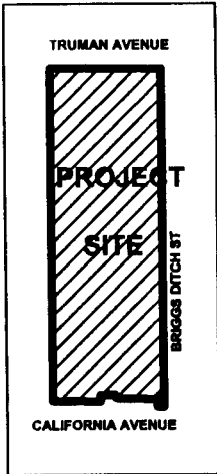
MARSHALL AVENUE LIGHTING DISTRICT FORMATION

All that certain real property situated in the State of California, County of Stanislaus, being a portion of Section 31, Township 3 South, Range 9 East, Mount Diablo Base and Meridian described as follows:

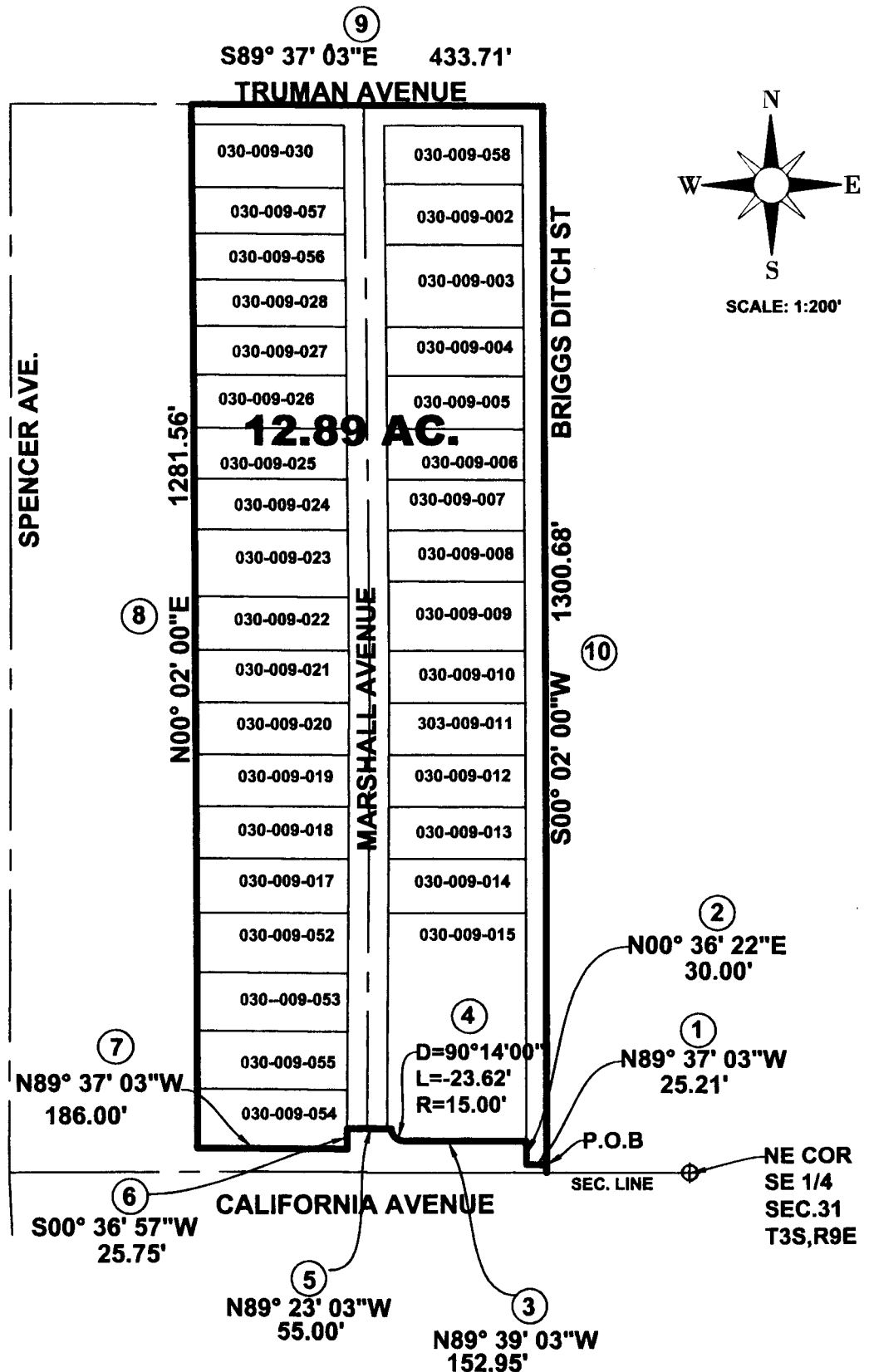
Commencing at the northeast corner of the southeast one-quarter corner of Section 31 said point being the southwest corner of Lot 15 Spencer Colony as per map filed on December 16, 1904 in Volume 2 of Maps at page 3 Stanislaus County Records, thence North $89^{\circ}37'03''$ West along the east-west one-quarter line of Section 31, a distance of 665.68 feet to the southeast corner of Lot 14 Spencer Colony, thence North $00^{\circ}36'14''$ East 10.00 feet to the **TRUE POINT BEGINNING** of this description said point being the intersection of the north line of California Avenue with the centerline of Briggs Ditch St. and being the north easterly corner of California - Marshall Reorganization, thence (1) North $89^{\circ}37'03''$ West, 25.21 feet, thence (2) along said Reorganization North $00^{\circ}36'22''$ East a distance of 30.00 feet along the north line of California Avenue, Thence (3) North $89^{\circ}39'03''$ West a distance of 152.95 feet to a point and the beginning of a non-tangent curve from which radial line bears South $89^{\circ}23'03''$ East, thence (4) northwesterly along said non-tangent curve, concave to the northeast having a radius of 15.00 feet through a central angle of $90^{\circ}14'00''$ an arc distance of 23.62 feet to a point on the north line of said California Avenue, thence (5) North $89^{\circ}23'03''$ West a distance of 55.00 feet, thence (6) South $0^{\circ}36'57''$ West a distance of 25.75 feet, thence (7) North $89^{\circ}37'03''$ West a distance of 186.00 feet, thence (8) leaving said north line of California Avenue North $00^{\circ}02'00''$ East of 1281.56 feet to the centerline of Truman Avenue, thence (9) along the center line of Truman Avenue South $89^{\circ}37'03''$ East, a distance of 433.71 feet to the northwest corner of Lot 9 Spencer Colony, thence (10) South $0^{\circ}02'00''$ West, a distance of 1300.68 feet to the true point beginning of this description.

Containing an Area=12.89 Acres

EXHIBIT "B"



VICINITY MAP
NOT TO SCALE

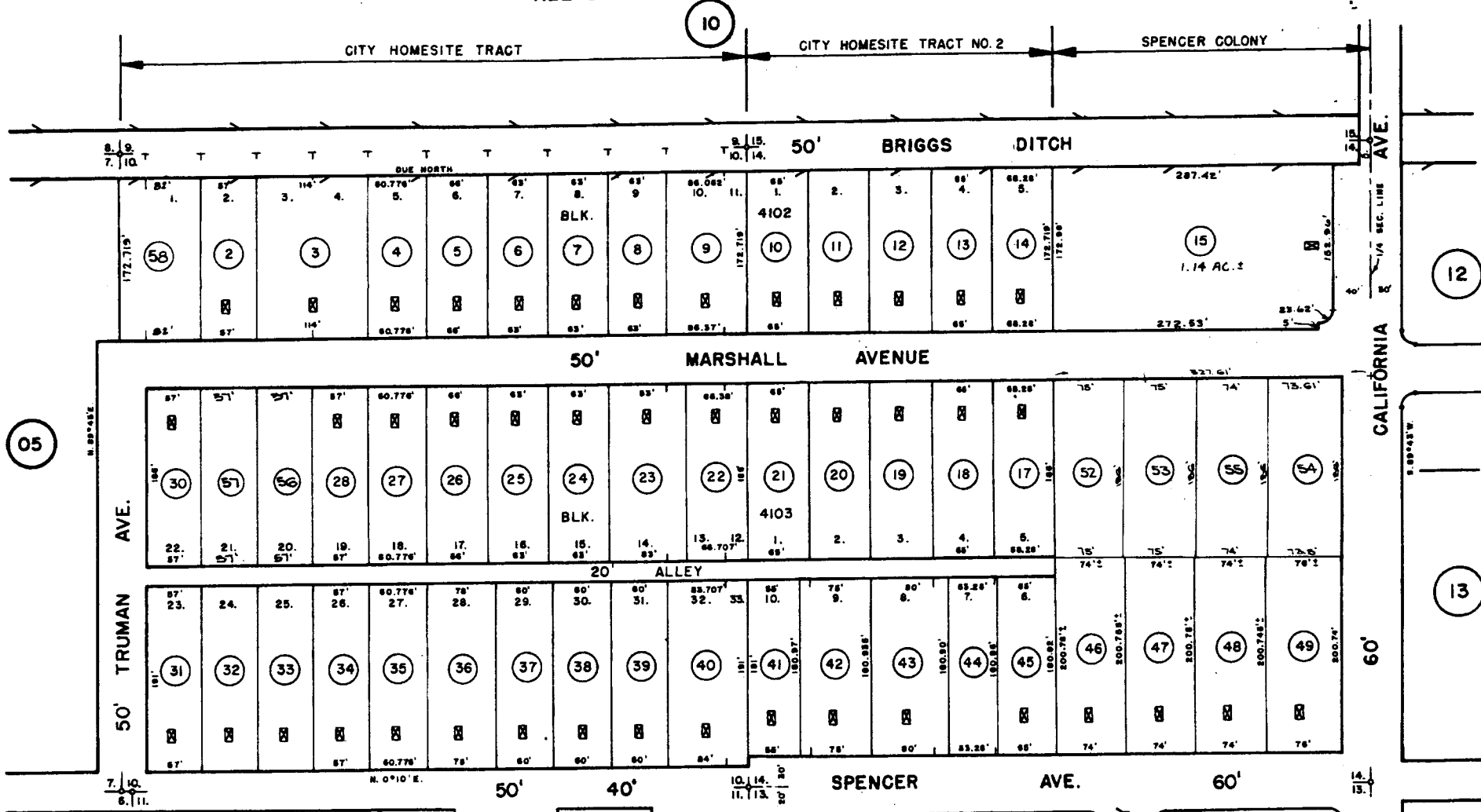
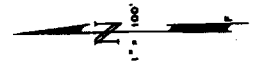


MARSHALL AVENUE LIGHTING DISTRICT FORMATION		STANISLAUS COUNTY DEPARTMENT OF PUBLIC WORKS	
BEING A PORTION OF THE NE QUARTER OF THE SE QUARTER SECTION 31, T3 S, R 9 EAST M.D.B.M.		SCALE: 1"=200'	DATE: 08-07-2009
		DRAWN BY: NCW CHECKED BY: LF	

THIS MAP FOR ASSESSMENT
PURPOSES ONLY
Copyright 2001 Stanislaus County.
All rights reserved.

PORTION NE 1/4 SECTION 31 T. 3 S. R. 9 E. M. D. B. & M.
PORTION OF SPENCER COLONY - LOTS 10 & 14
ALL OF CITY HOMESITE TRACT
ALL OF CITY HOMESITE TRACT NO. 2

080 006 30-09



05

08

10

12

13

FROM F-49
R. M. 2-3
9-81
11-85
R. S. 8-82
DEC. 20, 1983
UPDATED 1-16-90, 10-2-01 MF

Back To
Book
Index

MARNI WAY



65.02

30-09

NOTICE OF HEARING REGARDING FORMATION OF
THE MARSHALL AVENUE LIGHTING DISTRICT
AND THE LEVY OF AN ANNUAL ASSESSMENT

NOTICE IS HEREBY GIVEN that on Tuesday, November 03, 2009, at the hour of 9:15 A.M., or as soon thereafter as the matter may be heard, in the Joint Chambers located in the basement of the City/County Administration Building, 1010 10th Street, Modesto, California, the Board of Supervisors of Stanislaus County will hold a public hearing regarding formation of the Marshall Avenue Lighting District, ballot procedure, and the levy of an annual assessment on the parcel of land within proposed district. The Marshall Avenue Lighting District will contain all that certain real property in the County of Stanislaus, State of California, particularly described as follows:

All that certain real property situated in the State of California, County of Stanislaus, being a portion of Section 31, Township 3 South, Range 9 East, Mount Diablo Base and Meridian described as follows:

Commencing at the northeast corner of the southeast one-quarter corner of Section 31 said point being the southwest corner of Lot 15 Spencer Colony as per map filed on December 16, 1904 in Volume 2 of Maps at page 3 Stanislaus County Records, thence North 89°37'03" West along the east-west one-quarter line of Section 31, a distance of 665.68 feet to the southeast corner of Lot 14 Spencer Colony, thence North 00°36'14" East 10.00 feet to the **TRUE POINT BEGINNING** of this description said point being the intersection of the north line of California Avenue with the centerline of Briggs Ditch St. and being the north easterly corner of California –Marshall Reorganization, thence (1) North 89°37'03" West, 25.21 feet ,thence (2) along said Reorganization North 00°36'22" East a distance of 30.00 feet along the north line of California Avenue, Thence (3) North 89°39'03" West a distance of 152.95 feet to a point and the beginning of a non-tangent curve from which radial line bears South 89°23'03" East, thence (4) northwesterly along said non-tangent curve, concave to the northeast having a radius of 15.00 feet through a central angle of 90°14'00" an arc distance of 23.62 feet to a point on the north line of said California Avenue, thence (5) North 89°23'03" West a distance of 55.00 feet, thence (6) South 0°36'57" West a distance of 25.75 feet, thence (7) North 89°37'03" West a distance of 186.00 feet, thence (8) leaving said north line of California Avenue North 00°02'00" East of 1281.56 feet to the centerline of Truman Avenue, thence (9) along the center line of Truman Avenue South 89°37'03" East, a distance of 433.71 feet to the northwest corner of Lot 9 Spencer Colony, thence (10) South 0°02'00" West, a distance of 1300.68 feet to the true point beginning of this description.

Containing an Area =12.89 Acres

NOTICE IS FURTHER GIVEN that at the above noticed time and place, interested persons will be given an opportunity to be heard. For additional information, call Stanislaus County Department of Public Works at (209) 525-6525.

BY ORDER OF THE BOARD OF SUPERVISORS

DATED: September 15, 2009

ATTEST: CHRISTINE FERRARO TALLMAN, Clerk
of the Board of Supervisors
of the County of Stanislaus,
State of California



BY: _____
Elizabeth A. King, Assistant Clerk of the Board

**DECLARATION OF PUBLICATION
(C.C.P. S2015.5)**

**COUNTY OF STANISLAUS
STATE OF CALIFORNIA**

I am a citizen of the United States and a resident Of the County aforesaid; I am over the age of Eighteen years, and not a party to or interested In the above entitle matter. I am a printer and Principal clerk of the publisher of **THE MODESTO BEE**, printed in the City of **MODESTO** , County of **STANISLAUS** , State of California, daily, for which said newspaper has been adjudged a newspaper of general circulation by the Superior Court of the County of **STANISLAUS** , State of California, Under the date of **February 25, 1951, Action No. 46453**; that the notice of which the annexed is a printed copy, has been published in each issue there of on the following dates, to wit:

Oct 20, 2009, Oct 27, 2009

I certify (or declare) under penalty of perjury That the foregoing is true and correct and that This declaration was executed at

MODESTO, California on

October 27th, 2009

(Signature)



PUBLIC NOTICE

NOTICE OF HEARING REGARDING FORMATION OF THE MARSHALL AVENUE LIGHTING DISTRICT AND THE LEVY OF AN ANNUAL ASSESSMENT NOTICE IS HEREBY GIVEN that on Tuesday, November 03, 2009, at the hour of 9:15 A.M., or as soon thereafter as the matter may be heard, in the Joint Chambers located in the basement of the City/County Administration Building, 1010 10th Street, Modesto, California, the Board of Supervisors of Stanislaus County will hold a public hearing regarding formation of the Marshall Avenue Lighting District, ballot procedure, and the levy of an annual assessment on the parcel of land within proposed district. The Marshall Avenue Lighting District will contain all that certain real property in the County of Stanislaus, State of California, particularly described as follows: All that certain real property situated in the State of California, County of Stanislaus, being a portion of Section 31, Township 3 South, Range 9 East, Mount Diablo Base and Meridian described as follows: Commencing at the northeast corner of the southeast one-quarter corner of Section 31 said point being the southwest corner of Lot 15 Spencer Colony as per map filed on December 16, 1904 in Volume 2 of Maps at page 3 Stanislaus County Records, thence North 89°37'03" West along the east-west one-quarter line of Section 31, a distance of 665.68 feet to the southeast corner of Lot 14 Spencer Colony, thence North 00°36'14" East 10.00 feet to the TRUE POINT BEGINNING of this description said point being the intersection of the north line of California Avenue with the centerline of Briggs Ditch St. and being the north easterly corner of California - Marshall Reorganization, thence (1) North 89°37'03" West, 25.21 feet, thence (2) along said Reorganization North 00°36'22" East a distance of 30.00 feet along the north line of California Avenue, Thence (3) North 89°39'03" West a distance of 152.95 feet to a point and the beginning of a non-tangent curve from which radial line bears South 89°23'03" East, thence (4) northwesterly along said non-tangent curve, concave to the northeast having a radius of 15.00 feet through a central angle of 90°14'00" an arc distance of 23.62 feet to a point on the north line of said California Avenue, thence (5) North 89°23'03" West a distance of 55.00 feet, thence (6) South 0°36'57" West a distance of 25.75 feet, thence (7) North 89°37'03" West a distance of 186.00 feet, thence (8) leaving said north line of California Avenue North 00°02'00" East of 1281.56 feet to the centerline of Truman Avenue, thence (9) along the center line of Truman Avenue South 89°37'03" East, a distance of 433.71 feet to the northwest corner of Lot 9 Spencer Colony, thence (10) South 0°02'00" West, a distance of 1300.68 feet to the true point beginning of this description. Containing an Area =12.89 Acres. NOTICE IS FURTHER GIVEN that at the above noticed time and place, interested persons will be given an opportunity to be heard. For additional information, call Stanislaus County Department of Public Works at (209) 525-6525. BY ORDER OF THE BOARD OF SUPERVISORS. DATED: September 15, 2009. ATTEST: CHRISTINE FERRARO TALLMAN, Clerk of the Board of Supervisors of the County of Stanislaus, State of California. BY: Elizabeth A. King, Assistant Clerk of the Board
Pub Dates Oct 20, 27, 2009