

THE BOARD OF SUPERVISORS OF THE COUNTY OF STANISLAUS
ACTION AGENDA SUMMARY

DEPT: Public Works *Adm*

BOARD AGENDA # C-5

Urgent Routine

AGENDA DATE July 21, 2009

CEO Concurs with Recommendation YES NO
(Information Attached)

4/5 Vote Required YES NO

SUBJECT:

Approval of Resolutions in Support of Senate Bill 532 and the Realignment of State Route 108

STAFF RECOMMENDATIONS:

Adopt the Resolutions in support of Senate Bill 532 and the realignment of State Route 108.

FISCAL IMPACT:

There is no fiscal impact associated with adopting either Resolution.

BOARD ACTION AS FOLLOWS:

No. 2009-504

On motion of Supervisor Grover, Seconded by Supervisor Monteith

and approved by the following vote,

Ayes: Supervisors: Chiesa, Grover, Monteith, and Chairman DeMartini

Noes: Supervisors: None

Excused or Absent: Supervisors: None

Abstaining: Supervisor: O'Brien

1) X Approved as recommended

2) _____ Denied

3) _____ Approved as amended

4) _____ Other:

MOTION:

ATTEST:

Elizabeth A. King
ELIZABETH A. KING, Assistant Clerk

File No.

DISCUSSION:

The North County Corridor Transportation Expressway Authority (NCC TEA) was formed to facilitate the adoption of a State Route (SR) 108 Corridor to replace the existing SR 108 and provide for a high capacity expressway to accommodate existing and anticipated growth in the northern part of Stanislaus County. The project is intended to enhance traffic safety, improve the transportation network performance and promote a balanced traffic circulation system.

The NCC TEA consists of the City of Oakdale, City of Riverbank, City of Modesto and Stanislaus County. Ex-officio members are the Stanislaus Council of Governments (StanCOG) and the California Department of Transportation (Caltrans).

The Streets and Highways Code Section 408 subsection (b) describes the route as being “from Route 132 in Modesto to Route 120 in Oakdale”. The proposed project limits would have a termini approximately 6 miles to the east of Oakdale. The Board Resolution to support proposed Senate Bill 532, authored by Senator Cogdill, changes the limits of SR 108 to “between SR 132 near Modesto to Route 120 east of Oakdale”. The Board Resolution will be incorporated into the Environmental Impact Report for the State Route 108 East Route Adoption.

Senate Bill 532, in addition to changing the route limits, also will designate the route as interregional. Senator Cogdill has requested resolutions of support from the NCC Agencies. This change will allow the amended State Route 108 to be included in the State's Interregional Route System (IRRS) and thus making it eligible for Interregional Transportation Improvement Funding (ITIP). Specifically, this will enable the proposed NCC project to be eligible for up to \$91 million of ITIP funding that was previously allocated to the Oakdale Bypass Project.

Tentative adoption dates of corresponding resolutions from the NCC member agencies are:

- July 21st - Stanislaus County
- August 3rd - City of Oakdale
- August 4th - City of Modesto
- August 10th - City of Riverbank
- August 12th - StanCOG

POLICY ISSUES:

The Board should consider if the recommended action is consistent with the Board's its priorities of providing a safe community, a healthy community and a well-planned infrastructure system.

STAFFING IMPACT:

There is no staffing impact associated with this item.

THE BOARD OF SUPERVISORS OF THE COUNTY OF STANISLAUS
STATE OF CALIFORNIA

Date: July 21, 2009

No. 2009-504

On motion of Supervisor Grover Seconded by Supervisor Monteith
and approved by the following vote,

Ayes: Supervisors: Chiesa, Grover, Monteith, and Chairman DeMartini

Noes: Supervisors: None

Excused or Absent: Supervisors: None

Abstaining: Supervisor: O'Brien

THE FOLLOWING RESOLUTION WAS ADOPTED:

Item # C-5

Approval to Support Senate Bill 532

WHEREAS, the County of Stanislaus is a member agency of the North County Corridor Transportation Expressway Authority and was formed in order to facilitate the North County Corridor SR 108 East Route Adoption to replace the existing State Route 108 and provide for high-capacity and high-speed expressway to accommodate existing and anticipated traffic growth in northern Stanislaus County.

WHEREAS, the North County Corridor SR 108 East Route Adoption will enhance traffic safety, improve transportation network performance by accommodating regional growth, promoting balanced traffic circulation, reducing congestion and travel times and vehicle hours of delay.

WHEREAS, the North County Corridor Transportation Expressway Authority consists of, in addition to the County of Stanislaus, the Stanislaus Council of Governments (StanCOG); and the cities of Modesto, Riverbank and Oakdale.

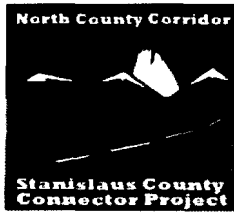
WHEREAS, SB 532 is a necessary component to facilitate the North County Corridor SR 108 East Route Adoption.

WHEREAS, SB 532 authorizes inclusion of specified miles east of Oakdale to be included within the limits of State Route 108 as necessary to facilitate the North County Corridor SR 108 East Route Adoption and specified portions of State Route 108 to be included in the State's Interregional Route System (IRRS) as necessary to facilitate the North County Corridor SR 108 East Route Adoption.

NOW, THEREFORE, BE IT RESOLVED by the Board of Supervisors of the County of Stanislaus that it supports SB 532, as a necessary component to facilitate the North County Corridor SR 108 East Route Adoption.

ATTEST: **CHRISTINE FERRARO TALLMAN, Clerk**
Stanislaus County Board of Supervisors,
State of California





North County Corridor Transportation
Expressway Authority

June 19, 2009

The Honorable Dave Cogdill
California State Senate, District 14
State Capitol Room 5097
Sacramento, CA 95814

RE: SB 532 (Cogdill) Support As Amended

Dear Senator Cogdill:

The North County Corridor Transportation Expressway Authority (NCCTEA) supports your Senate Bill 532 and sincerely appreciates the inclusion of the amendment related to State Route (SR) 108 in the bill. The NCCTEA, a joint powers authority with members from Stanislaus County, Cities of Modesto, Riverbank & Oakdale, Stanislaus Council of Governments and Caltrans, has embarked on a regionally important project that relocates SR 108 bypassing the cities of Oakdale & Riverbank.

As amended, your bill would redefine the limits of SR 108 as being between Route 132 near Modesto to Route 120 east of Oakdale. Current statute identifies a portion SR 108 as interregional, allowing it to be eligible for Interregional Transportation Improvement Program (ITIP) funding in the State Transportation Improvement Program (STIP). Your bill will include the portion of SR 108 within our project limits to be interregional, thus enabling it eligible for ITIP funding committed by the California Transportation Commission and Caltrans during the last STIP cycle.

These important statutory changes will allow the County and its partners to move forward on the critical bypass project, which will alleviate traffic problems in the northern part of the County.

Stanislaus County has been working for several years on this project. This statutory change will mark a major milestone. For these reasons, the NCCTEA is pleased to support SB 532 as amended, and extends sincere thanks and appreciation for your efforts on behalf of the County

Sincerely,

A handwritten signature in black ink, appearing to read "William O'Brien".

Supervisor William O'Brien
Chairman, North County Corridor Joint Powers Authority

THE BOARD OF SUPERVISORS OF THE COUNTY OF STANISLAUS
STATE OF CALIFORNIA

Date: July 21, 2009

No. 2009-504

On motion of Supervisor Grover and approved by the following vote,
Seconded by Supervisor Monteith

Ayes: Supervisors: Chiesa, Grover, Monteith, and Chairman DeMartini

Noes: Supervisors: None

Excused or Absent: Supervisors: None

Abstaining: Supervisor: O'Brien

Item # C-5

THE FOLLOWING RESOLUTION WAS ADOPTED:

Approval to Support the Realignment of State Route 108

WHEREAS, the County of Stanislaus is a member agency of the North County Corridor Transportation Expressway Authority.

WHEREAS, the North County Corridor Transportation Expressway Authority was formed in order to facilitate the North County Corridor SR 108 East Route Adoption to replace the existing State Route 108 and provide for high-capacity and high-speed expressway to accommodate existing and anticipated traffic growth in northern Stanislaus County.

WHEREAS, the North County Corridor SR 108 East Route Adoption will enhance traffic safety, improve transportation network performance by accommodating regional growth, promoting balanced traffic circulation, reducing congestion and travel times and vehicle hours of delay.

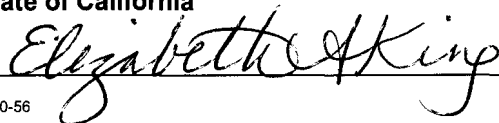
WHEREAS, the North County Corridor Transportation Expressway Authority consists of, in addition to County of Stanislaus, the Stanislaus Council of Governments (StanCOG); and the cities of Riverbank, Oakdale, and Modesto.

WHEREAS, the realignment of a portion of State Route 108 is necessary to facilitate the North County Corridor SR 108 East Route Adoption.

WHEREAS, the realignment of a portion of State Route 108 will allow for interregional connectivity from McHenry/SR 108, north of Modesto, east and north easterly, to an area east of the SR 120/108 junction as necessary to facilitate the North County Corridor SR 108 East Route Adoption.

NOW, THEREFORE, BE IT RESOLVED by the Board of Supervisors of County of Stanislaus that it supports the realignment of State Route 108, as a necessary component to facilitate the North County Corridor SR 108 East Route Adoption.

ATTEST: CHRISTINE FERRARO TALLMAN, Clerk
Stanislaus County Board of Supervisors,
State of California



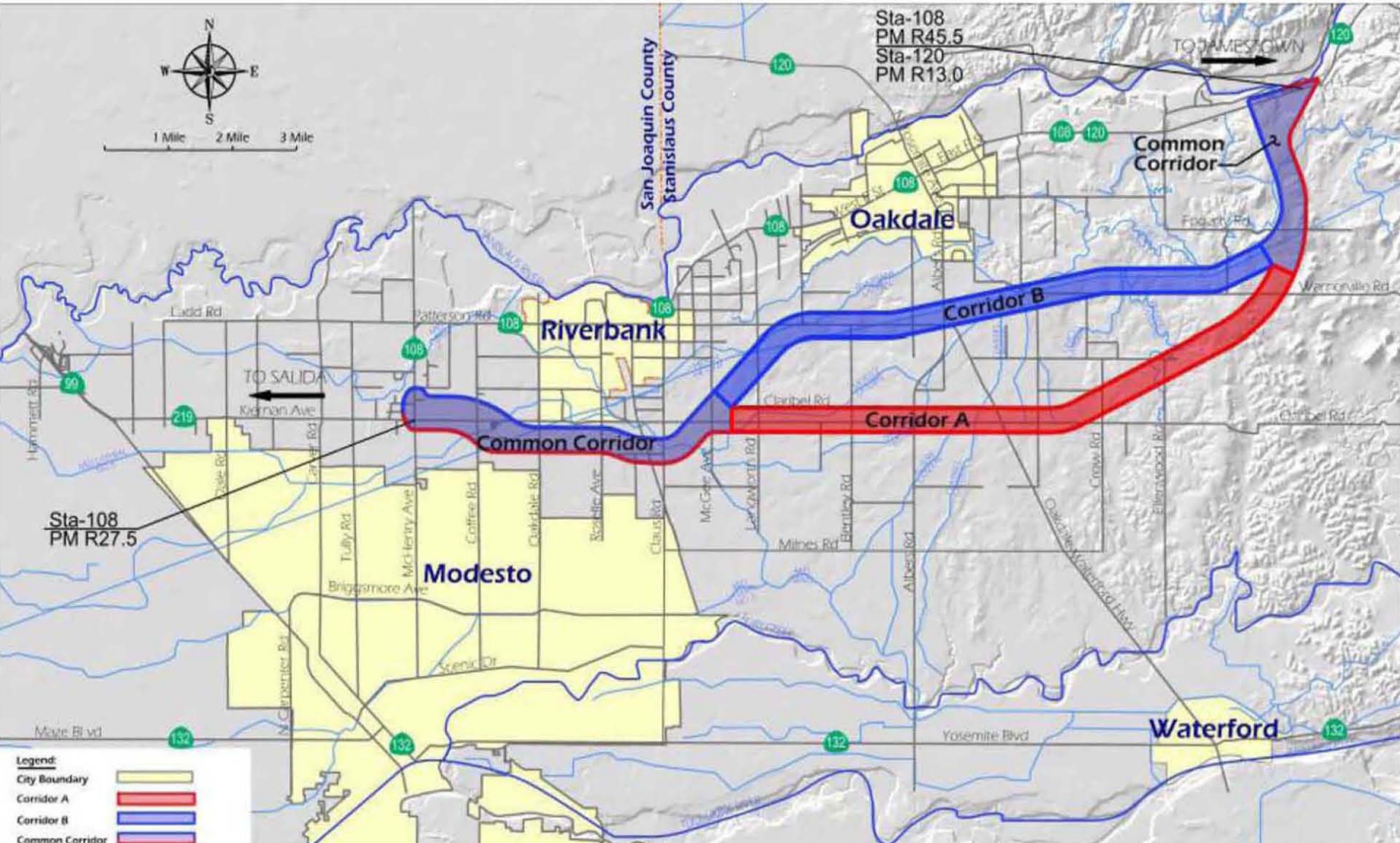
NCC SR 108 East Route Adoption Project

Stanislaus County Board of Supervisors
July 21, 2009

Agenda

- Project Introduction
- Need for the Project
- Process
- Interregional Designation
- Current Status
- Schedule
- Questions

NCC SR 108 E Route Adoption



Project Introduction

- Replacement to Oakdale Bypass
- Approximately 18 miles from McHenry Ave to East of Oakdale
- 2007 StanCOG Feasibility Study
- 2008 Preliminary Design Report
- Programming in the STIP
- Current Scope of Work
- NCC West vs. NCC East

Need for the Project

- Future Growth (2030 & 2050)
- Conditions on Existing SR 108
- No Existing High-capacity East-West Roadway

Need for the Project

- *Existing SR 108 currently functions as a “main street.” Between the intersections of SR 108/McHenry Avenue and SR 108/Lancaster Road, SR 108 is encumbered by 83 public street intersections and many private driveways with direct access onto SR 108. Existing SR 108 is highly congested during peak travel times and these conditions are expected to worsen as traffic volumes increase into the foreseeable future.*

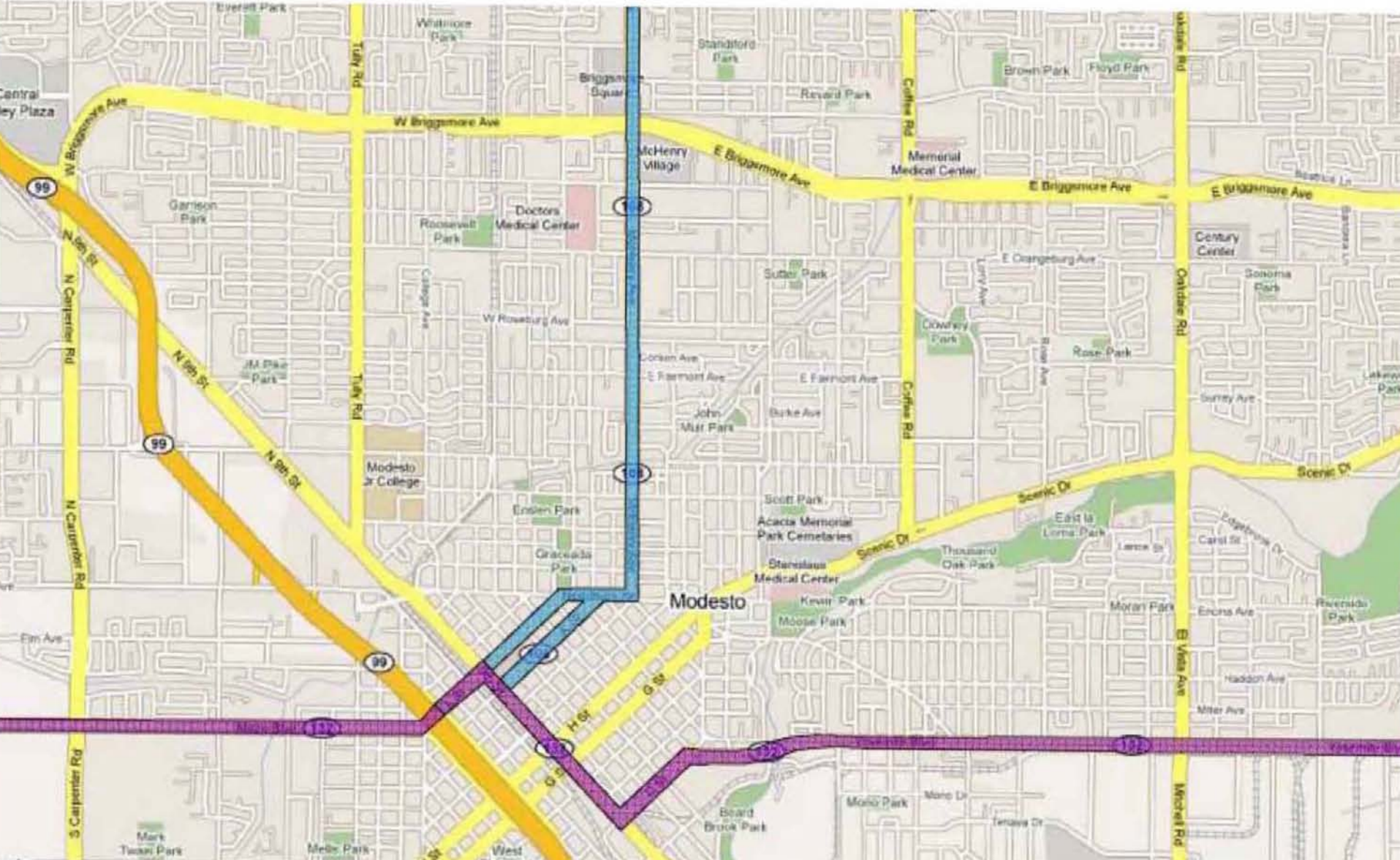
Need for the Project

- *Using SR 108 would require reconstructing the existing roadway to a multilane controlled-access expressway/freeway. The improvements would cause substantial impacts to local communities, including substantial displacements and relocations of residences and businesses.*

Process

- Local Roadway vs. State Route
- Approximately 2000-foot-wide Corridors
- State Route Adoption
- Programmatic CEQA
- CTC Action
- Project Level Environmental (CEQA/NEPA)

Interregional Designation



Interregional Designation

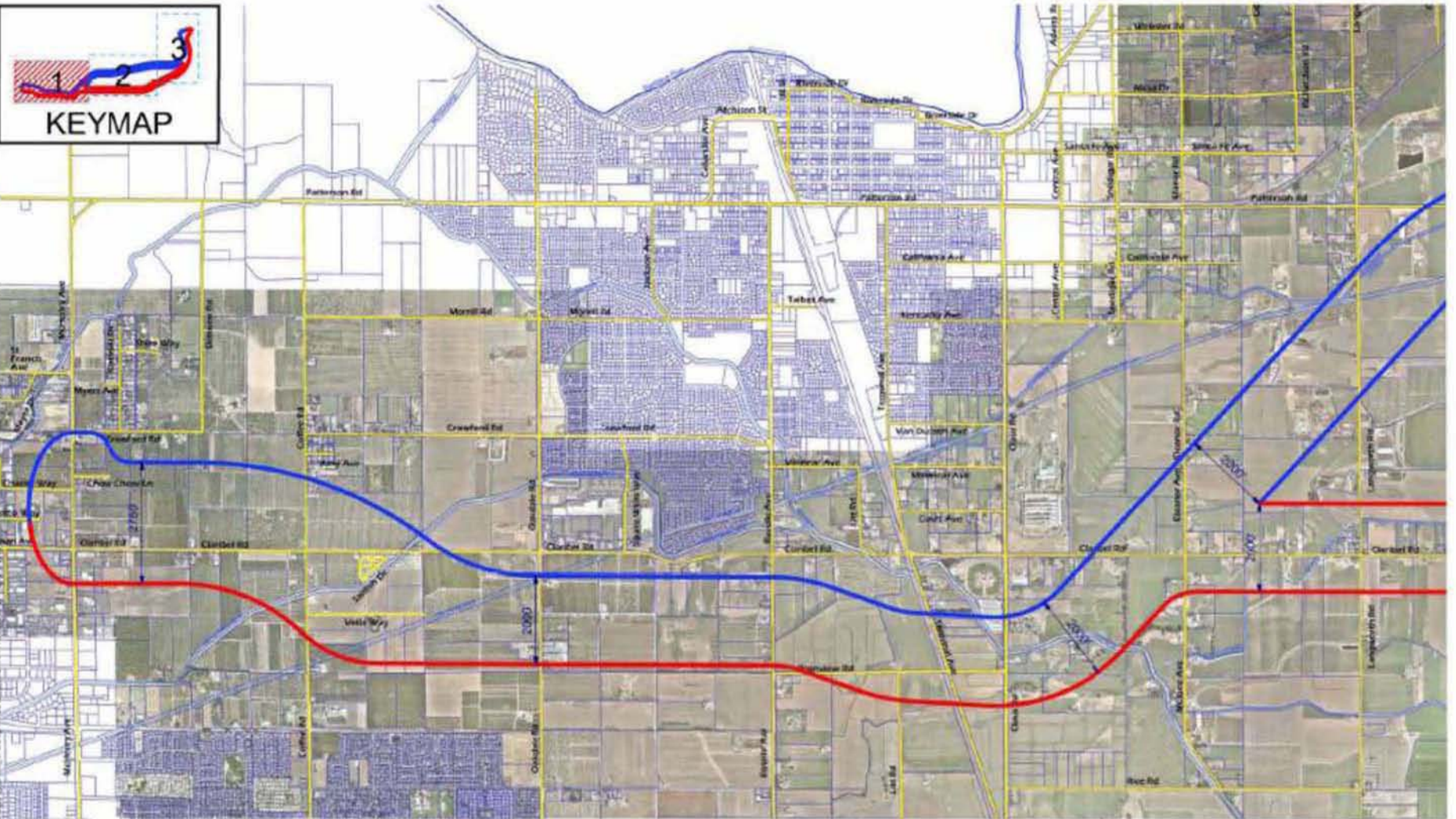
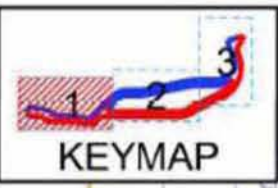
- Oakdale Bypass Funding
- ITIP Eligibility
- SB 532 Legislation
- Legislation Schedule
- 2010 STIP Deadline

Current Status

- Scoping Meetings – Completed
- Environmental Tech Memos – Completed
- Draft Environmental Document – Under Caltrans Legal Review
- Draft Project Report – Completed

Schedule

- Release of Draft EIR – August
- Public Hearings – August
- Corridor Recommendation – October/November
- CTC Approval of the Corridor – November/December
- Application for ITIP – December/January
- STIP Adoption – March/April/May
- Project Level Environmental Document – Begins December
- North County Corridor West Env Doc – Begins December

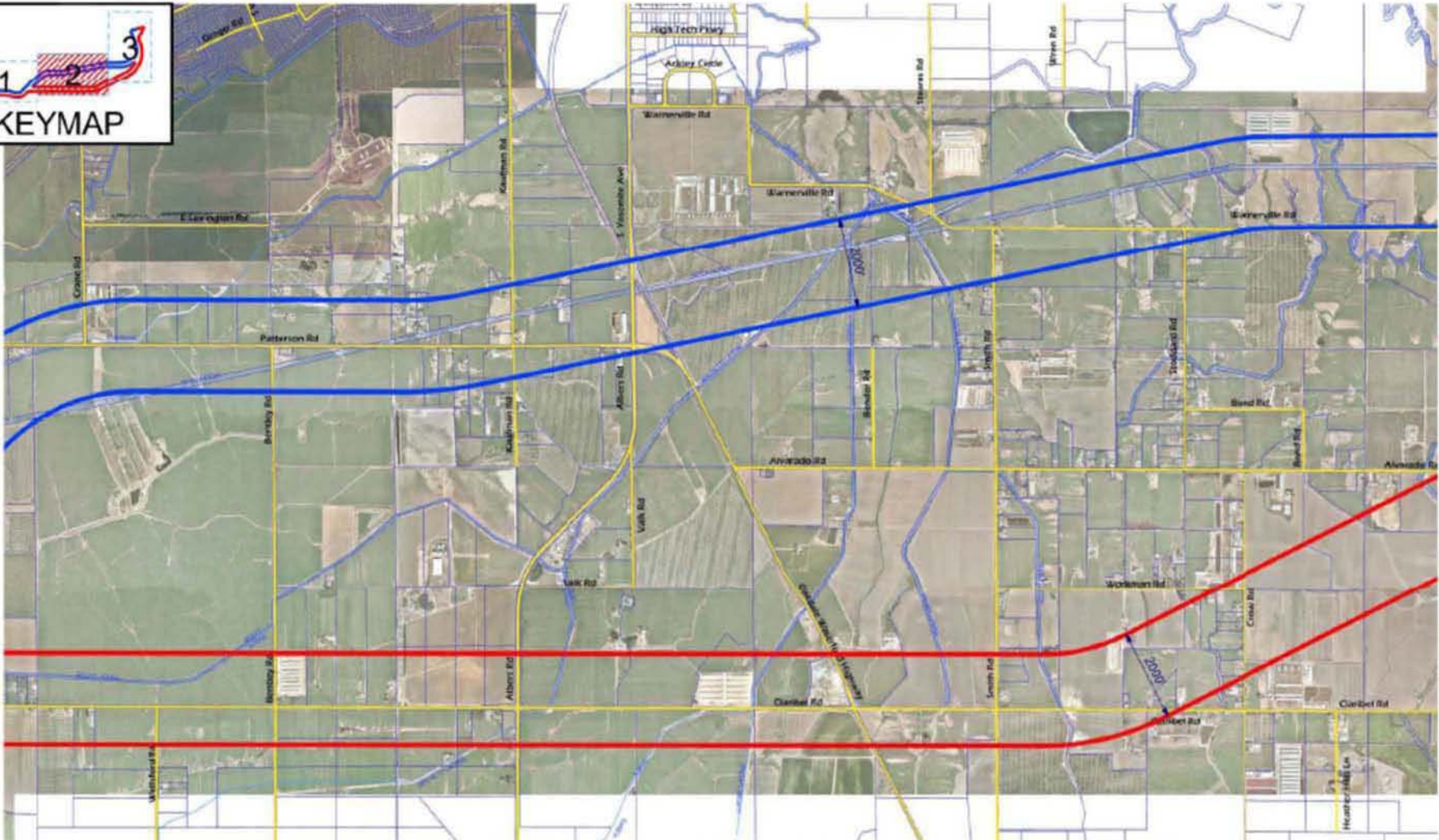
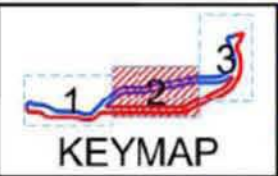


Legend:
 New Interregional State Route
 Common Corridor A & B
 Corridor B
 Corridor A

**NORTH COUNTY CORRIDOR SR 108 EAST ROUTE ADOPTION
 Conceptual Corridor Study Area (Draft)**

Note: Study corridors A and B are approximately 2,000 feet wide.





Legend:
 New Interregional State Route
 Common Corridor A & B
 Corridor B
 Corridor A

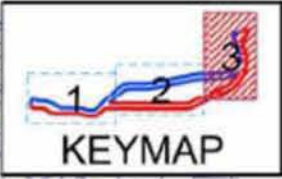
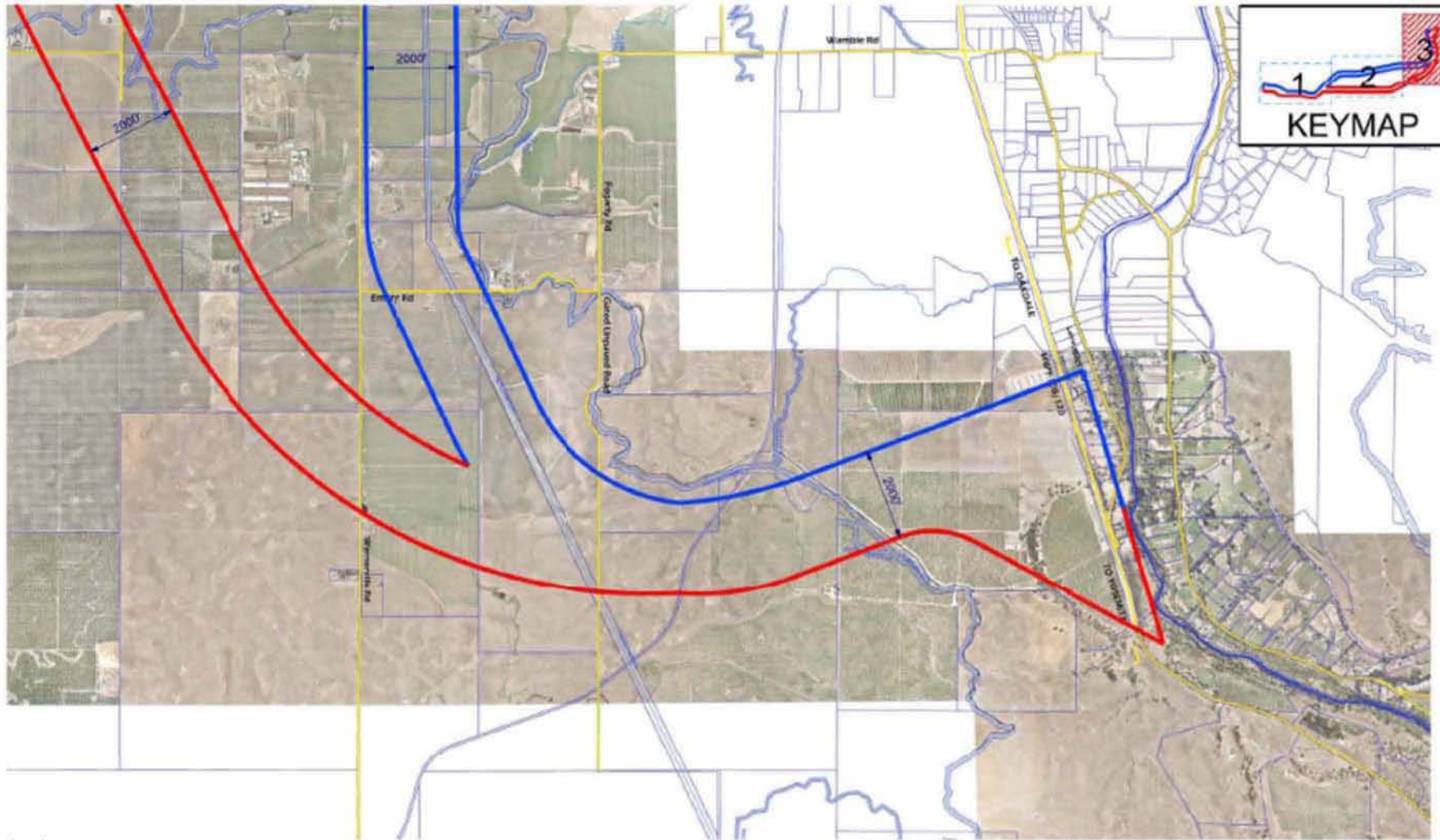
NORTH COUNTY CORRIDOR SR 108 EAST ROUTE ADOPTION Conceptual Corridor Study Area (Draft)

Note: Study corridors A and B are approximately 2,000 feet wide.



F:\Programs\GIS\WORKSPACE\SR108\SR108_1000\SR108_1000_001.dwg - 7/1/2008

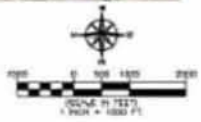
Project: SR 108 East Route Adoption; Date: July 7, 2008; Revision: 001; Sheet: 3 of 3



Legend:
 New Interregional State Route
 Common Corridor A & B
 Corridor B
 Corridor A

Note: Study corridors A and B are approximately 2,000-foot wide.

**NORTH COUNTY CORRIDOR SR 108 EAST ROUTE ADOPTION
 Conceptual Corridor Study Area (Draft)**





Questions