

THE BOARD OF SUPERVISORS OF THE COUNTY OF STANISLAUS
ACTION AGENDA SUMMARY

DEPT: Public Works mbd

BOARD AGENDA # B-13

Urgent Routine

AGENDA DATE April 28, 2009

CEO Concurs with Recommendation YES NO
(Information Attached)

4/5 Vote Required YES NO

SUBJECT:

Consideration of the 2008 Public Works Annual Report

STAFF RECOMMENDATIONS:

Accept the 2008 Public Works Annual Report.

FISCAL IMPACT:

The combined budgets for all divisions of the Department of Public Works for Fiscal Year 2008-2009 is \$64 million. There is no direct fiscal impact associated with the acceptance of this report.

BOARD ACTION AS FOLLOWS:

No. 2009-275

On motion of Supervisor Monteith, Seconded by Supervisor Grover
and approved by the following vote,

Ayes: Supervisors: O'Brien, Chiesa, Grover, Monteith, and Chairman DeMartini

Noes: Supervisors: None

Excused or Absent: Supervisors: None

Abstaining: Supervisor: None

1) X Approved as recommended

2) _____ Denied

3) _____ Approved as amended

4) _____ Other:

MOTION:

Christine Ferraro

ATTEST: CHRISTINE FERRARO TALLMAN, Clerk

File No.

Consideration of the 2008 Public Works Annual Report

DISCUSSION:

A well-planned infrastructure system is essential to the health, safety, and well-being of the residents of Stanislaus County. Infrastructure also plays a key role in attracting and sustaining economic development. Stanislaus County's Public Works Department is entrusted with the construction and management of roads and bridges, operation of inter-city transit services, and regional transportation planning, in support of developing and maintaining a well-planned infrastructure system.

The unincorporated area of Stanislaus County has approximately 1,600 miles of public roadway, located over nearly 1,500 square miles. The Department of Public Works' challenge has been to provide transportation services in the form of travelable roadways and transit services to the citizens of Stanislaus County in the most cost efficient manner possible.

The 2008 Public Works Annual Report provides information on the services provided by the Department of Public Works, and the projects either undertaken or completed during Fiscal Year 2008-2009.

POLICY ISSUES:

Acceptance of this report addresses the Board of Supervisor's priorities of a well-planned infrastructure system, a safe community, and efficient delivery of public services.

STAFFING IMPACTS:

There are no staffing impacts associated with this item.

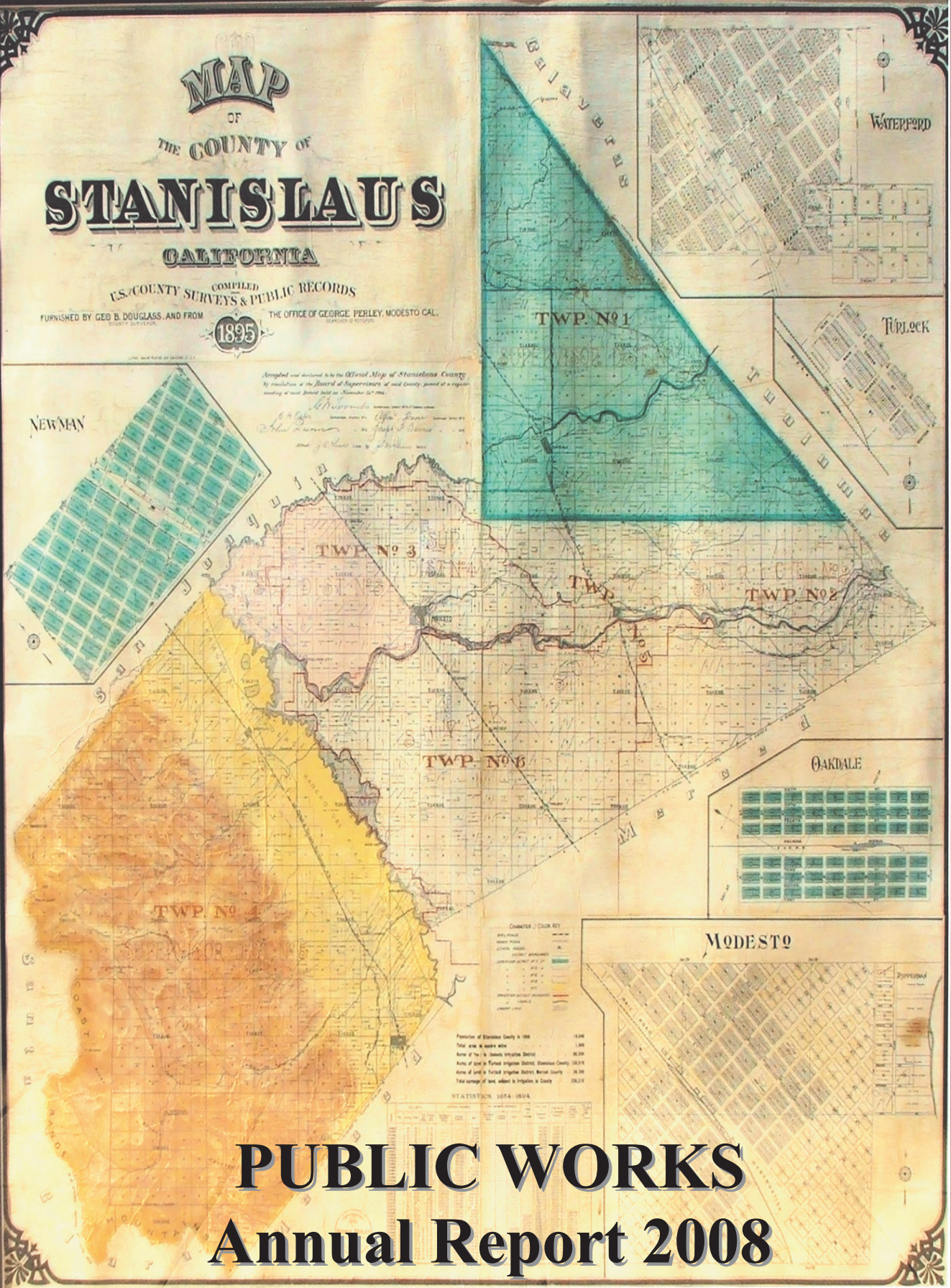
MAP OF THE COUNTY OF STANISLAUS CALIFORNIA

COMPILED
FROM U.S. COUNTY SURVEYS & PUBLIC RECORDS
FURNISHED BY GEO. B. DOUGLASS, AND FROM
THE OFFICE OF GEORGE PERLEY, MODESTO, CAL.

1895

Approved and declared to be the Official Map of Stanislaus County
by resolution of the Board of Supervisors of said County, passed at a regular
meeting of said Board held on November 16th 1894.

Witness my hand and the seal of said County at Modesto, California, this 16th day of November 1894.
George Perley, Sheriff



PUBLIC WORKS Annual Report 2008



Our Mission

Manage and improve infrastructure through safe and efficient use of resources and assets for the benefit of our citizens.

Our Vision

Strive to be the leading Public Works Department through innovative stewardship of infrastructure and environment.

Striving to be the Best

LETTER FROM THE DIRECTOR



Welcome to the 2008 Stanislaus County Department of Public Works Annual Report. It has been an exciting and productive year. My hope is that this report provides a glimpse into our achievements and hard work.

While maintaining our core focus, we have endeavored to become even more fiscally responsible due to external and economic pressures. This fiscal responsibility has forced some change in the service areas of street sweeping and drainage. This change has allowed us to focus and accomplish even more of our core mission.

Engineering and Operations continues to develop their program while delivering great projects in the area of congestion relief, bridges, and roadway maintenance. Our Roads Department delivered 144 miles of conventional chip resurfacing in addition to their routine maintenance efforts. One area of special focus was the revamping of our special district reports and budgets to become more accountable and fiscally responsible.

With the slowed and depressed economy, our business and finance group have been vigilant in tracking revenues and expenditures to ensure budget success. One affect of the slowed economy has been a new focus on Transit. Our transit division, while managing unprecedented ridership increases has also provided regional leadership in transit development and management. Leadership has also been the focus in the GIS division. This group, while striving to develop a countywide GIS for the masses, has established itself with a new GIS manager.

In all areas of our Public Works activities I would like to recognize and thank the great leadership and caring that staff provides. I am certain that with our hard work, commitment to service and fiscal responsibility we will continue to thrive and be successful.

Finally, I would like to express my gratitude to the Board of Supervisors for their confidence in our ability and support of our efforts. We continue to provide a well-planned infrastructure system, efficient delivery of public services and to build effective partnerships.

Matt Machado



LETTER FROM THE DEPUTY DIRECTOR

We have had a truly successful year and I am deeply appreciative of our fine staff and management support. We are becoming a stronger Department with young, new staff coming aboard under the mature guidance and wisdom of our valued “old” timers. The changes in the last year have been dramatic. We have reorganized the Engineering Divisions and relocated staff to be more efficient and effective. We are developing standards and programs to help guide us into the future. And, we have resurfaced more road miles than the last 10 years combined.

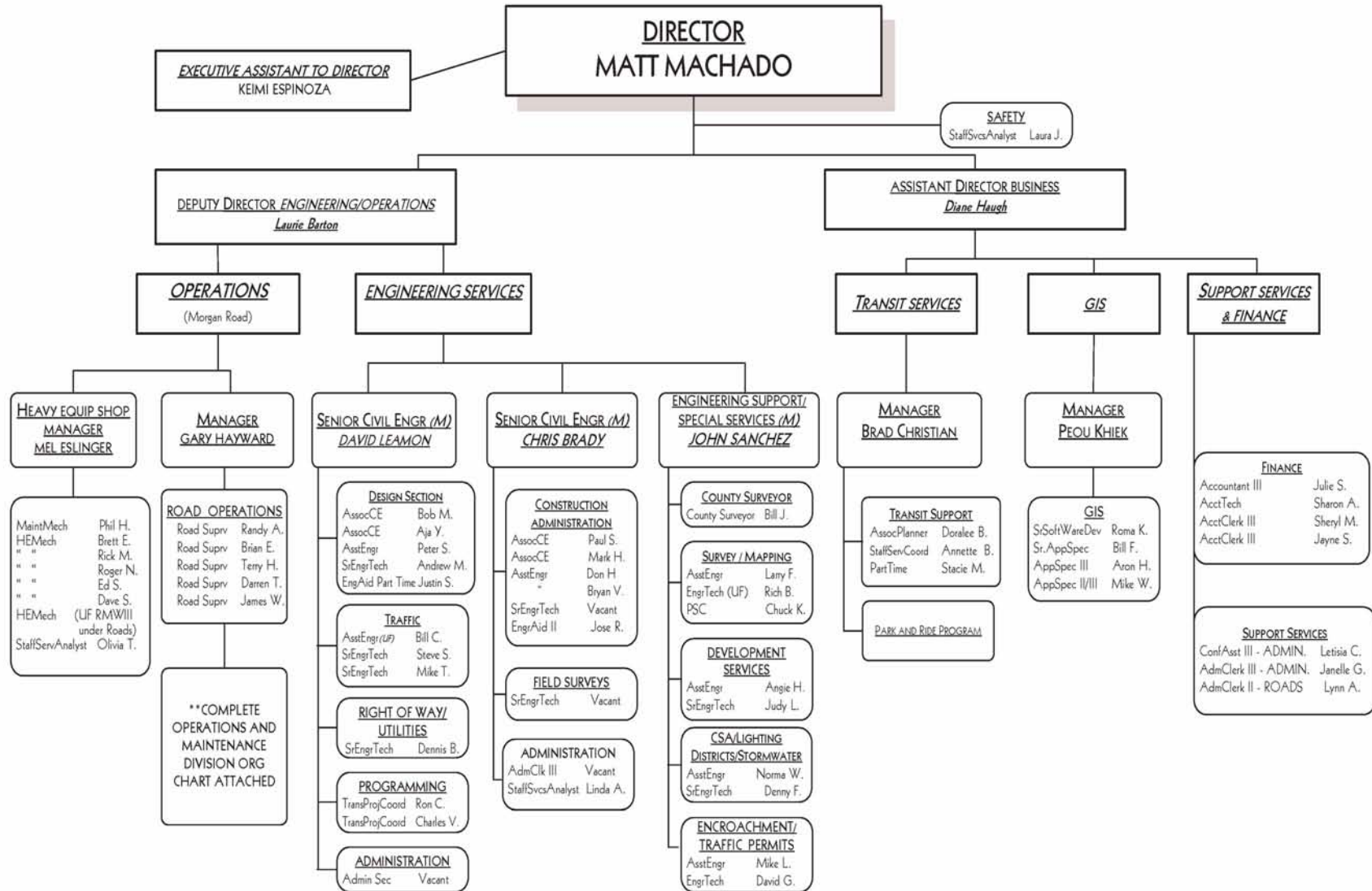
The energy in the Department is stunning! Everyone is working hard and we are seeing the results. We have resurfaced more than 180 miles of roads this year – 144 miles of those with our own crews. We’ve turned on five new signals this year. Capacity increasing projects, such as the North County Corridor and Route 219 from Route 99 to McHenry Boulevard are progressing.

In spite of the present economic climate, transportation projects may benefit from stimulus packages on the federal and state levels. If so, it will be our goal to position ourselves to take full advantage to improve our infrastructure for our citizens. The challenges are many, but the opportunities are greater. We are looking forward to great things in the coming year.

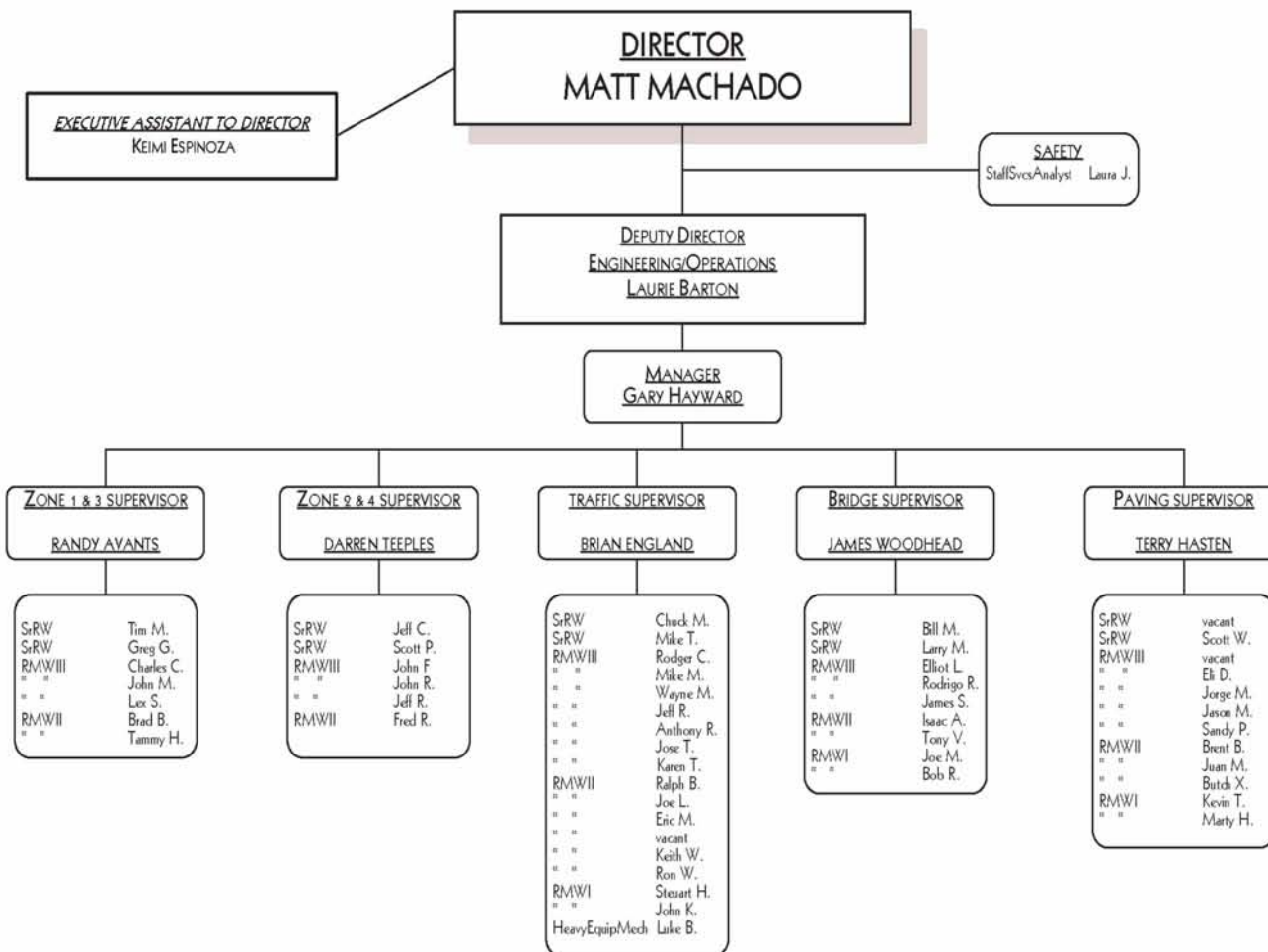
A handwritten signature in blue ink that reads "Laurie Barton". The signature is fluid and cursive.

Laurie Barton

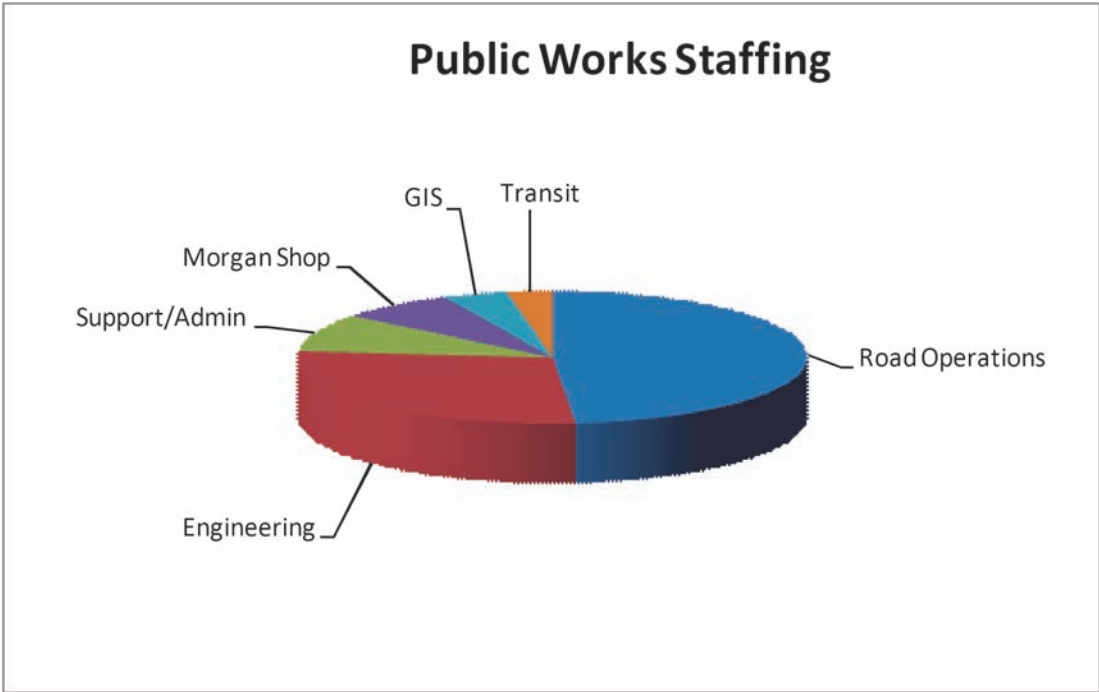
DEPARTMENT OF PUBLIC WORKS



DEPARTMENT OF PUBLIC WORKS OPERATIONS & MAINTENANCE



Overview

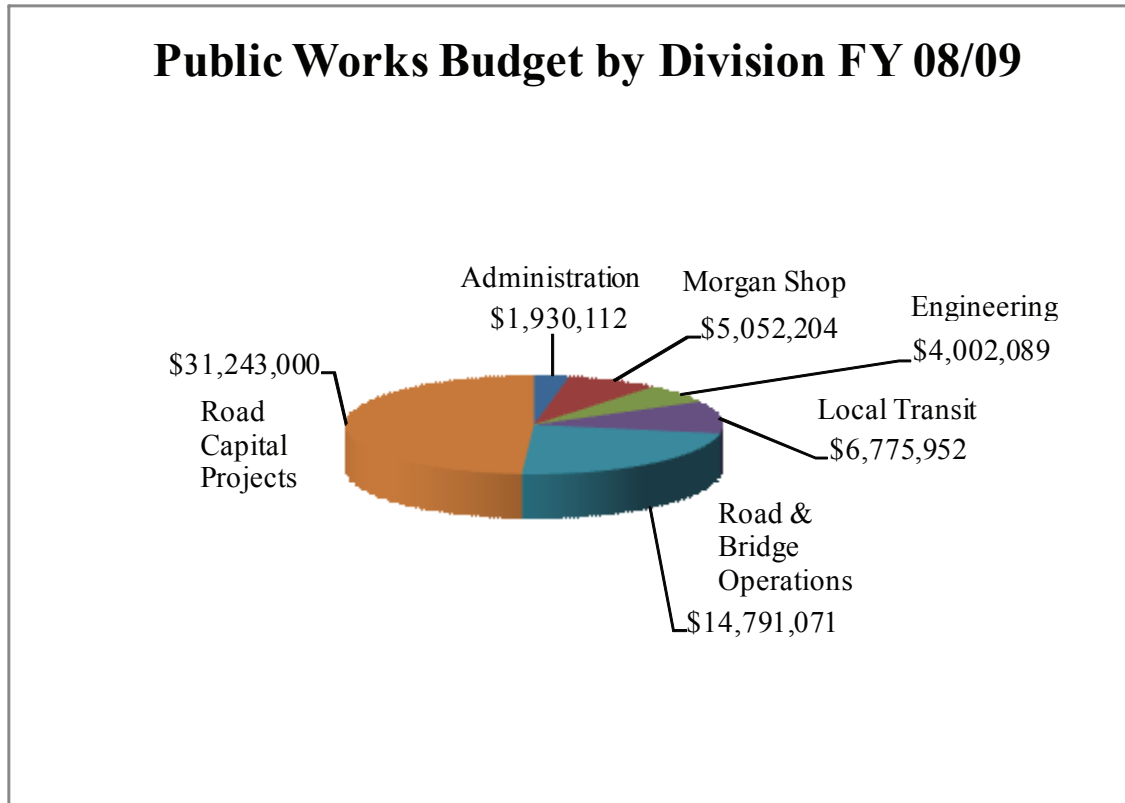


Functional Breakdown

Road Operations	59
Engineering	34
Support/Admin	11
Morgan Shop	9
GIS	5
Transit	3.5

Public Works is comprised of six functional areas. These areas support Public Works mission to manage and improve infrastructure through safe and efficient use of resources and assets for the benefit of our citizens. As seen in the chart above, the majority of Public Works' staffing resources are allocated to Road Operations and Engineering Services.

Public Works 2008/2009 Budget Overview



Public Works annual budget for Fiscal Year 2008/2009 is approximately \$64 million. As depicted above, Road Maintenance and Operations and Capital Projects utilize the vast majority of these resources. Capital projects consist of roadway improvements such as intersection widening and traffic signals, roadway widening, and conventional chip, rubberized chip and asphalt overlays to improve road surfaces.

The Engineering Division and Morgan Shop provide services in support of Road Operations and Projects. Engineering provides design, construction and traffic services while Morgan Shop provides heavy equipment and fueling services.

The Public Works Transit Division oversees the operation of Stanislaus Regional Transit (“StaRT”), the County’s intercity public transportation system.

The Administration Division consists of Geographic Information Systems (GIS) and Finance / Administration.



Engineering

David Leamon, PE Senior Civil Engineer



Design

The **Design Section** provides oversight and design services for road and bridge improvement projects as defined in the Capital Improvement Program. The services include developing design plans that incorporate the County's standard specifications and meet state and federal funding requirements. The Design Section addresses the environmental, utility and right of way coordination of a project through to construction documents that consist of plans, specifications and an engineer's estimate. The construction documents are presented to the Board of Supervisors for approval to bid; the project is awarded and then tracked for progress through construction.

This section also provides project consultant selection, and design and construction oversight services to other County Departments such as Environmental Resources, Parks and the Redevelopment Agency.

Traffic

The **Traffic Section** is responsible for tracking and monitoring all traffic delineation and signage on the County road system. This may include conducting traffic counts to assess capacity on the roadway, reviewing safety and accident reports, reviewing design plans for detours and analyzing the need for signals. The Traffic Section also monitors roadways that are eligible for state and federal funding through the Maintain Mileage Report.

Engineering - Programming

David Leamon, PE Senior Civil Engineer

Authorized Federal Funding

Obtaining authorization for Federal-aid in 2008 was extremely good. The Department received \$7,034,520.97 in authorized Federal funding, which is an unusually large amount. This funding includes the following:

- Received additional Federal funding of \$84,108 for the Carpenter Road Re-alignment 1.5 Miles north of Crows Landing Road. This was a direct savings of \$84,108 in Local Match.
- Requested and obtained an additional reimbursement of \$16,637.97 on the Final Invoice for the 2006/2007 Resurfacing Project. This is a direct savings of \$16,637.97 in Local Match.
- As a result of Federal action, the Federal reimbursement rate for Congestion Mitigation Air Quality (CMAQ) Program funding for FY 07/08 and 08/09 was adjusted from 88.53% to 100%. This change allowed staff to request and obtain authorization for an additional \$184,805 for the CMAQ Vehicle Purchase projects for these fiscal years. This resulted in a direct Local Match savings of \$184,805.
- Under the Regional Surface Transportation Program (RSTP), a combined total of \$6,748,970 in Federal funds was authorized for two resurfacing projects.

Grants Awarded (funds appropriated but not yet authorized)

Highway Safety Improvement Program:

- Hatch Road/Crows Landing Road intersection. Replace outdated traffic signals. Total Cost = \$485,000; Federal Funds = \$436,000; Local = \$48,500.
- South Ninth Street/Latimer Avenue intersection. Extend southbound left turn pocket. Total Cost = \$120,000; Federal Funds = \$108,000; Local = \$12,000.
- Claribel Road at the Burlington Northern Santa Fe Railroad crossing. Construct raised concrete median on the west side of the railroad crossing, install advance warning signs and pavement markings, and widen the radius return at the southwest corner of the Claribel Road/Terminal Avenue intersection.
Total Cost = \$29,000; Federal Funds = \$26,100; Local = \$2,900

High Risk Rural Road Program:

Tim Bell Road approximately 1.3 miles west of Hazeldean Road. Install 250 lineal feet of guardrail at the curve on the northwest side of the road.
Total Cost = \$15,400; Federal Funds = \$13,860; Local = \$1,540

Engineering - Design / Traffic

David Leamon, PE Senior Civil Engineer

Road Project Related:

- McHenry Ladd Irrigation Bids Opened, Clyde Wheeler low bidder - Construction began in October.
- RSTP Program A – 32 miles of overlay awarded to George Reed – Construction finished in November
- RSTP Program B – 27 miles of overlay - Bidding in January
- Chip Seal 2008 – Roads identified - Oil contract bid in July 2008
- Funding identified for Martin Luther King sidewalks – Internal design
- Spruce Street Design Finished – Construction completed in October
- Carpenter Road – Beverley and Robertson National Environmental Protection Agency clearance obtained - Bid in December
- Sycamore/Elm and Las Palmas signals - Design at 65%
- Slurry Seal Program for Denair - Bids opened in December
- Highway 132 & Geer/Albers Storm Drainage calculations performed, drainage design completed.
- Salida Boulevard Project - Project awarded to Teichert Construction

Bridge Project Related:

- Crows Landing Bridge
 - > Strategy Report developed by Caltrans and design consultant Nolte Engineering
 - > Programming is being re-authorized
- 7th Street bridge
 - > 08-09 for design – Anticipating for Spring Adoption of FTIP by StanCOG
 - > Negotiating Memorandum Of Understanding with City of Modesto
- Santa Fe Bridge over the Ceres Main Canal Widening contract awarded
- McHenry Avenue Bridge over the Stanislaus River
- Lead Agency: San Joaquin County
 - > Design Consultant awarded to DMJM/AECOM
 - > Project Development Team has formed reviewing consultant's work
- Requested funding from Caltrans, for programming: Geer Road Bridge, Hickman Road Bridge, Kilburn Road Bridge, Pete Miller Road Bridge, and Dry Slough Bridge.

Engineering - Design / Traffic

Special Projects:

- Keyes Phase 2 – Project contract awarded to George Reed-Groundbreaking February 7, 2009.
- Empire Infrastructure Improvements – Project design to be restarted. Based on funding project will be in multiple phases
- County Cemeteries - Completed final plan layout of numbered future plots with existing burial sites identified.
- Completed Woodward Reservoir Water Well Improvements
- Frank Raines Park Improvements – Developing preliminary cost, scope and schedule for replacement bids.
- Landfill Cell #5 Base Liner System – Out to bid
- Completed Sperry Avenue Improvements
- Improvement to Heron Pointe, Woodward Reservoir- Grant Funded by California Department of Boating and Waterways (Cal Boating). Memorandum Of Understanding with Stanislaus County Parks & Recreation.



Justin Schmidt and
Dennis Bazyuk



Peter Song



Aja Yamzon and
Andrew Malizia



Construction Division

Chris Brady, PE Senior Civil Engineer

The Construction Division oversees all construction related elements of the Public Works Department projects. Through contract administration and construction inspection, it is the goal of the Resident Engineer to ensure that the project is built according to the plans, specifications, and within budget. In doing so, the Resident Engineer assures the public that projects are completed to meet the County's standards. The Resident Engineer also processes any changes to the project plans through the Board of Supervisors for approval.

The Construction Division also provides construction contract administration services to other Stanislaus County departments, such as Parks and Recreation, Environmental Resources, and the Redevelopment Agency.

2008 Accomplishments

Albers Road @ Milnes Road Intersection Improvements/
Traffic Signals

Monte Vista @ Lester/Main Traffic Signals

Irrigation Relocation for McHenry Avenue at Ladd Road
(to be completed February 2009)

Pirrone Road Reconstruction

RSTP Road Resurfacing 06/07 Phase 2 (14.5 miles)

RSTP Road Resurfacing 07/08 Program A (30 miles)

Salida Boulevard Corridor Plan
(to be completed February 2009)

Santa Fe Avenue Canal Bridge Widening at Hatch Road
(to be completed February 2009)

Sisk Road @ Bangs Avenue Traffic Signal Improvements
Sperry Road Improvements



From Left to Right: Chris Brady, Jose Ramirez, Linda Allsop, Bryan Voyles, Don Hamaguchi, Mark Hamblin and Paul Saini

2009 Forecasted Projects

Carpenter Road @ Robertson Road Intersection Improvements/Traffic Signals

Carpenter Road @ Beverly Drive Intersection Improvements/Traffic Signals

Denair Lighting District Improvements

Fink Road Landfill Cell No. 5 Excavation

Fink Road Landfill Cell No. 5 Liner Installation

Keyes Redevelopment Project (roadway and storm drain improvements)

Las Palmas Avenue @ Sycamore Avenue Intersection Improvements/Traffic Signals

Las Palmas Avenue @ Elm Avenue Intersection Improvements/Traffic Signals

McHenry Avenue @ Ladd Road Intersection Improvements/Traffic Signals

RSTP Road Resurfacing 07/08 Program B (30 miles)

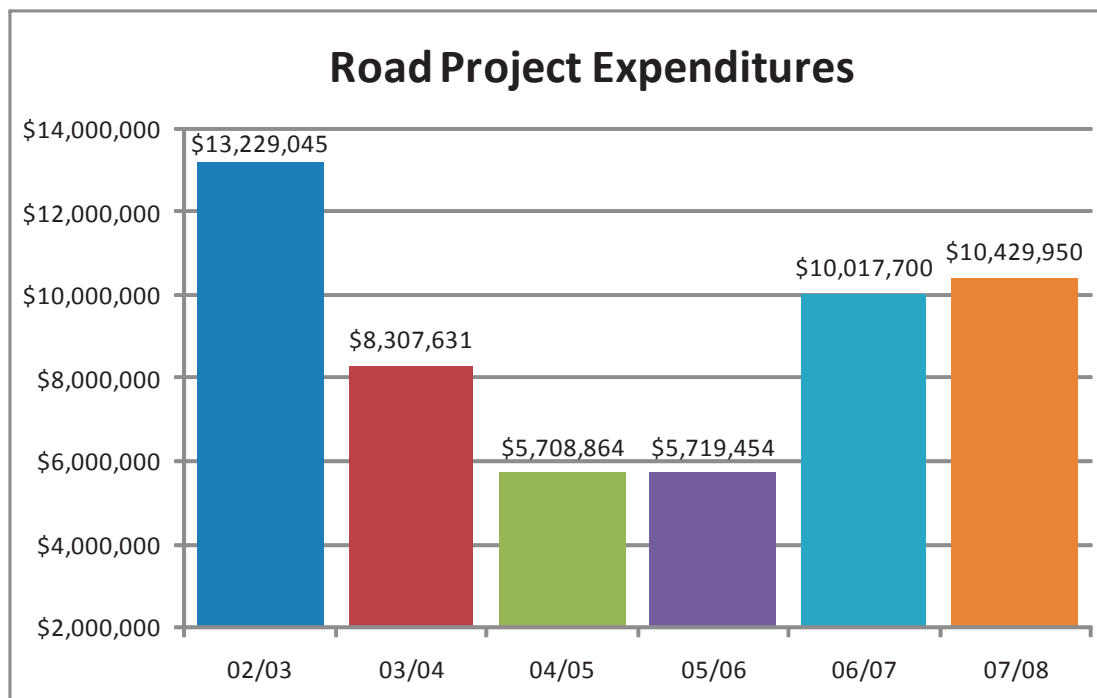
Project Funding

Stanislaus County’s Road Projects are generally funded by sources other than Highway Users Tax (HUT). This revenue source is used entirely for road maintenance and operations.

The major sources of funding for major road projects are Public Facility Fees (developer fees), State and Federal funds, Proposition 42, and Proposition 1B.

Stanislaus County implemented a Public Facility Fee program in 1990. This program identified routes within the County that would be impacted by growth, and established a fee structure to capture the cost of that growth. These funds have been used, for example, to make road widening and intersection improvements on Geer/Albers between Oakdale and Turlock, and Crows Landing, west of Modesto.

Propositions 42 and 1B were approved by the voters of California, providing additional resources for road operations, maintenance, and major road projects. The availability of Prop 42 and Prop 1B has enabled Public Works to construct a higher volume of major road projects. This funding is used to leverage federal and state money. Most federal and state programs require a “local match”, usually between 10% and 20%. By using Prop 42 or 1B funding for the local match, our local dollars go further.



Albers Road @ Milnes Road Intersection Improvements

Improvements: Roadway widening, AC overlay, and signalization

Cost: \$1,038,662

Start Date: May 2008

Completion Date: October 2008

Contractor: Sierra Nevada Construction

Resident Engineer/Construction Inspector: Paul Saini



RSTP Overlay Projects (06-07 Phase 2 & 07-08 Program A) – 44.5 total miles paved

Improvements: Asphalt Concrete Overlay, shoulder backing, pavement delineation

Costs: \$1,298,962.00 (06-07 Phase 2) & \$3,172,563.25 (07-08 Program A)

Project Dates: Spring 2008 (06-07 Phase 2) & Fall 2008 (07-08 Program A)

Contractor: George Reed Inc.

Resident Engineers/Construction Inspectors: Bryan Voyles & Don Hamaguchi



Sperry Road Improvements

Improvements: Roadway widening and reconstruction, curb/gutter/sidewalk, wet utilities, landscaping and bridge construction

Cost: \$6,401,642

Start Date: June 5, 2006

Completion Date: December 10, 2007

Contractor: DeSilva Gates

Resident Engineer/Construction Inspector: Don Hamaguchi & Bryan Voyles





Engineering - Support Services John Sanchez, Manager

The County Service Area (CSA), Lighting District (LD) and Landscape and Lighting District (LLD) section of the Public Works Department provides oversight for the formation of these districts and the services provided. Services such as storm drain maintenance, streetscape and park maintenance, and street lighting are funded by the assessment of parcels within the service areas.

The Land Development Coordinator prepares department conditions of approval and agreements for discretionary land use projects and represents the Department of Public Works at Planning Commission meetings.

2008 Accomplishments

Updated GIS map layers for:

- Supervisorial Districts
- County Service Areas (CSA)
- Lighting Districts (LD)
- Landscape & Lighting Districts (LLD)



Angie Halverson

Provided Customer Support to Survey Staff

Indexed Internal Maps:

- Corner Records
- Records of Survey
- Deeds and Easements
- Subdivision Maps
- Certificates of Correction
- Bench Marks



Denny Ferreira

Annexations/Upgrades:

- Dissolved County Service Areas 6, 13 and 17 and formed County Service Area 26 which will provide a storm drain system to the unincorporated town of Keyes.
- Revised and reformatted all County Service Area and Landscape & Lighting Districts Annual Engineer Reports.
- Completed annual County Service Area and Landscape & Lighting District budgets, including engineer's report and assessment extension to the tax roles.
- Annexed a portion of Pirrone Road into the Salida Lighting District.
- Created a plan and proposed a phased project to add lights to the Denair Lighting District.

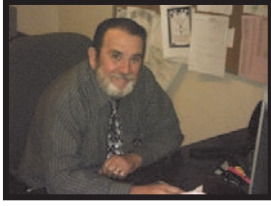
Engineering - Support Services

2009 Goals

- Scan and link to GIS layers:
 - Forms related to County Service Areas, Lighting Districts & Landscape and Lighting Districts
 - Deed
 - Boundary Map
 - Consent Form
 - Petition Form
 - Board Action Agenda Summary
- Complete the formation of the Beard Industrial Lighting District
- Start annexation process for proposed areas to the Beard Industrial Lighting District
- Locate all lights within the County's Lighting Districts and Landscape & Lighting Districts
- Create a GIS layer showing location, identification numbers, wattage and pole type of all lights located within County Lighting Districts and Landscape & Lighting Districts
- Dissolve County Service Area 3 per LAFCO recommendation
- Establish a formation and annexation process, with supportive documents, in cooperation with County Counsel that conforms to Proposition 218



Norma Williams

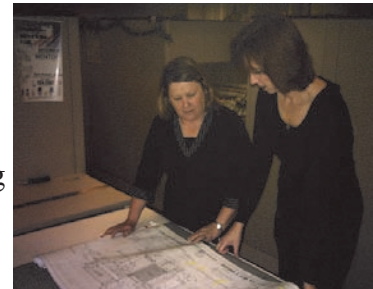


Engineering - Land Development & Plan Review John Sanchez, Manager

The Land Development & Plan Review section of the Engineering Division of Public Works protects the County's interest by ensuring that the development and design of the public improvements are in compliance with Stanislaus County Standards and all applicable laws to provide for the greatest benefits to the public.

The Land Development & Plan Review section of the Engineering Division provides the following services:

- Customer assistance to the public
- Review commercial and industrial projects
- Review road classifications
- Write Conditions of Approval
- Attend pre-design meetings
- Attend Planning Commission meetings
- Field services include data gathering, site review, and verifying that right-of-way is sufficient for future road classification
- Review road way improvement: curb, gutter, sidewalk and roadway design
- Review drainage for both On-Site and Off-Site Improvements
- Review Subdivision Plans
- Verify that Subdivision Plans, Parcel Maps, and Improvement Plans meet the Conditions of Approval
- Index records; such as Street Improvement Plans, Subdivision Improvement Plans, Financial Guarantees, and Street Improvement Agreements



Judy Lindsay and
Angie Halverson



Judy Lindsay

Engineering - Survey / Mapping

John Sanchez, Manager

The Survey section of the Engineering Division provides the following services:

- Field Services: Field services include monument preservation, data gathering, right-of-way establishment/staking, and field inspections.
- Indexing – records are indexed internally – such as benchmarks, certificates of correction, corner records, deeds & easements, and subdivision maps. Records are also indexed externally (via web site) such as records of survey, county surveys, subdivision maps and parcel maps.
- Map checking
- Legal description verification
- Drafting services
- Road abandonments

In addition, the survey team is a public resource.
Survey provides customer assistance to the public on a daily basis.

2008 Accomplishments

- Maintained and preserved approximately 9,000 corner monuments
- Upgraded GPS Survey equipment
- Submitted 117 maps for checking and recording
- Verified approximately 85 legal descriptions for LAFCO and Planning Department
- Parklawn Park Facility Upgrade design completed for Parks and Recreation
- Recorded 2 Records of Survey
- Processed 12 Certificates of Compliance
- 31 Easement descriptions written/verified/recorded
- Created Boundary descriptions for Keyes, Salida & Valley Homes M.A.C. & CSA annexations
- Continued electronically archiving survey records
- Continued indexing archived documents to department web site



Rich Brown



Chuck Kincaid



Larry Fontana



Bill Jones,
County Surveyor

Engineering - Encroachment

John Sanchez, Manager

The Encroachment Permit Division of the Public Works Department is charged with the responsibility of providing construction inspection of projects constructed within the public right-of-way or upon public property within the County of Stanislaus relating to grading and storm water retention.

The division protects the County's interest in the construction of public improvements by assuring that the improvements are constructed in accordance with the plans, specifications, and all applicable laws to afford the greatest benefit to the public. This includes reducing and avoiding future maintenance costs, providing for public convenience and safety, and minimizing public liability.



David Gein

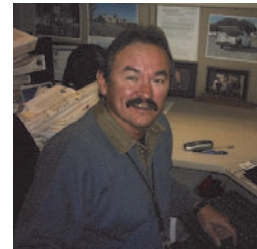
The division substitutes for Construction Administration Field Inspectors for Federal Labor Compliance in the construction and pavement of roads, bridges and reconstruction projects. In accomplishing this mission, employees work as a team by sharing ideas and providing support for other team members as they carry out their duties.

2008 Accomplishments

- Issued 390 Encroachment Permits
- Issued 327 Annual Transportation permits
- Issued 761 Daily Transportation Permits

Current Projects

- 6 pipeline maintenance agreements
- 3 High School/Road construction projects
- 24 large private commercial projects



Mike Luevano

2009 Goals

- Update the existing County Bridge Map & Addendum to include current bridge ratings and improve map legend information and layout along with current road requirements.
- Continue to provide prompt and courteous service to all of our customers.

As the supervising public agency we will continue to familiarize ourselves, monitor and enforce the California Regional Water Quality Control Board SWPPP (Storm Water Pollution Prevention Plan) submitted by contractors and property owners for every construction project that results in a cumulative one acre or more.



Road & Bridge Operations Division Gary Hayward, Manager

The Road and Bridge Division of Stanislaus County is responsible for maintaining more than 1,600 miles of roadway. This includes drainage basins, bridges, tree maintenance, center and edge line striping, legend painting, weed abatement, shoulder and traffic sign maintenance. During inclement weather you will find our crews in the rain, pumping storm water from flooded roads, placing warning barricades, closing roads or removing rockslides in Del Puerto Canyon.

We often work with emergency personnel at accident sites, spills clean up, and debris removal.



Please keep our crews safe by slowing down when driving through the work zones.



2008 Accomplishments

- Resurfaced Spruce Ave.
- Resurfaced Marshall Ave.
- Implemented a rotation plan to train employees on all public works equipment.
- Biannual maintenance of the Roberts Ferry Covered Bridge.
- Constructed 10 new vertical wells at various locations to address drainage problems.
- Chip sealed 144 miles of roadway.
- Replaced existing bulbs with LED bulbs in the flashing beacons. Rebates from MID & TID will cover the costs and reduce future energy costs.
- Installation of 4 way stop at Santa Fe and East Ave. Replaced the existing overhead electric beacon with solar powered beacons on top of each stop sign.
- Daily maintenance of streetlights.



Back row Left to Right: Darren Teeples, James Woodhead, Randy Avants. Front row Left to Right Gary Hayward, Terry Hasten and Brian England

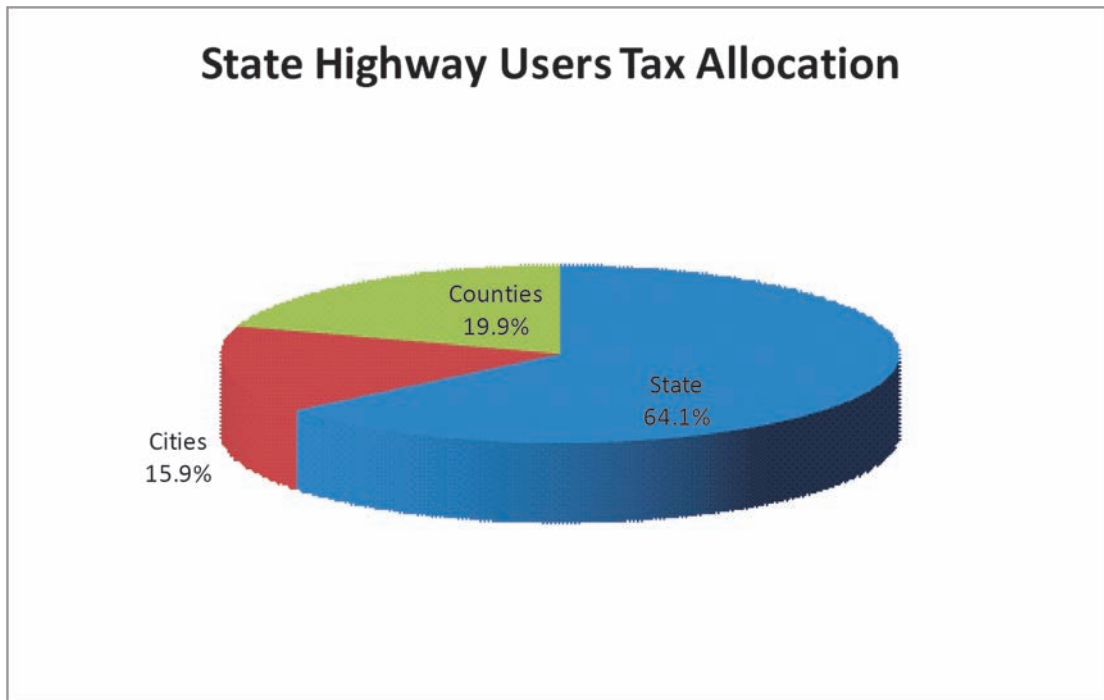
2009 Forecast

- Re-organization of the Public Works Road Division. The goal is to improve customer service by providing work team coverage 5 days a week.
- Support the 9 Municipal Advisory Committees.
- Continue with aggressive shoulder maintenance program.
- Remove and replace a damaged cattle guard in Del Puerto Canyon.
- Preparation of 160 + miles, including removal and replacement of damaged cross pipes before the 2009 resurfacing program is implemented.
- Support the Public Works Construction and Design Teams.
- Process review of Roads maintenance program.
- Implement new budget and scheduling procedures.

Road & Bridge Operations Division

The Road Operations budget is funded primarily through the State Highway Users Tax (Gas Tax). For every gallon of motor vehicle fuel sold in California the State collects 18 cents of state fuel excise tax. Of those 18 cents, Counties receive 3.59 cents. The apportionment to individual counties is based primarily on the County's share of registered vehicles and county road mileage. A small portion (less than 6%, or 1.04 cents) is allocated based on registered vehicles, assessed property valuation, and population.

The State share of Highway Users Tax is deposited in the State Highway Account and is used to fund the Regional Transportation Improvement Program (RTIP).

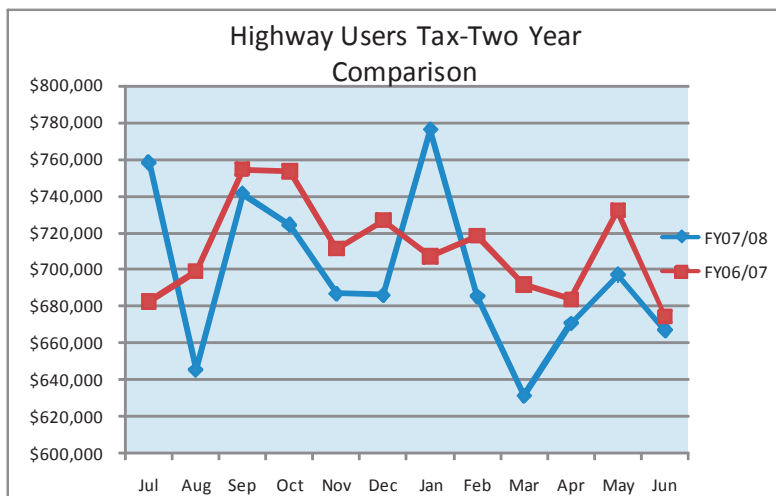
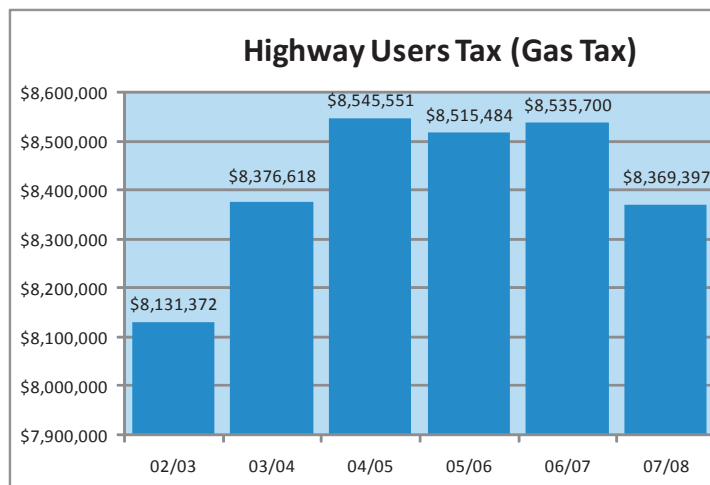


Road & Bridge Operations Division

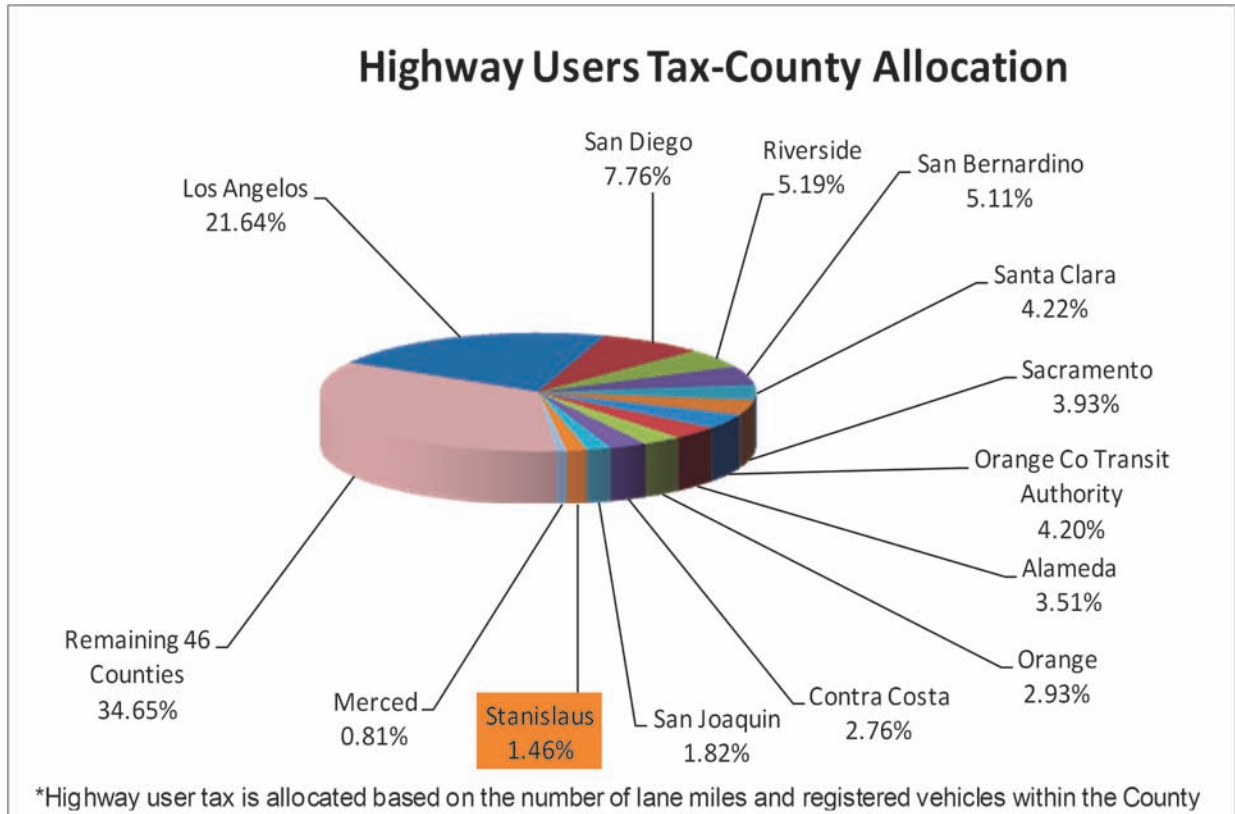
Prior to Fiscal Year 2008-2009, Stanislaus County's allocation of Highway User's Tax (HUT) experienced steady, if small, annual increases of approximately 2.5%.

The high cost of fuel in 2008 resulted in a decrease in fuel consumption and a corresponding decrease in Highway User's Tax revenue. In Fiscal Year 2007-2008 Stanislaus County received \$8,369,397 of Gas Tax revenues. This was \$166,303, or approximately 2%, less than prior year. This allocation is comparable with the Fiscal Year 2003-2004 receipts.

The current economy continues to impact Gas Tax revenues. The current fiscal year's revenues are tracking 11% lower than the year just completed. If this trend continues, Gas Tax revenues will be at least \$600,00 less than prior year, or at Fiscal Year 2002-2003 levels. During this same period, material costs have increased, further diminishing buying power.



Road & Bridge Operations Division



Of the fifty-eight counties in California the top six counties receive nearly 50% of the total allocation of State Highway Users Tax.

Stanislaus County's portion of the total allocation is just under 1.5%.

Road & Bridge Operations Division





Morgan Road Shop

Mel Eslinger, Manager

Morgan Shop is an Internal Service Fund (ISF) operation that provides equipment and vehicles to other Public Works divisions, primarily the Road & Bridge Division. The user divisions pay a rental rate to Morgan Shop when using equipment and vehicles. Morgan Shop provides vehicle and equipment maintenance as requested to other County Departments. In addition, Morgan Shop assists with the research and procurement of vehicles and equipment for other County Departments. Morgan Shop also provides Compressed Natural Gas (CNG), unleaded, and diesel fueling to County Departments and CNG fueling to other local jurisdictions.



From left to right: Roger Nelson, Eddie Soares, Olivia Tanner, Phil Harley, Dave Stacy, and Mel Eslinger Not pictured: Brett Ernest and Rick McElligott.

2008 Accomplishments
<ul style="list-style-type: none"> • Purchased diesel particulate filters for existing in-use on highway diesel trucks. • Upgraded existing water treatment system with a biological wastewater treatment system to meet the State Water Resources Control Board requirements. • Acquired 12,000-gallon water storage tank. • Obtained 4 traffic message boards for construction site safety. • Installed a standby Compressed Natural Gas Compressor at existing station. • Purchased two 3-Axle diesel trucks for low bed transport trailers. • Purchased 1 super dump diesel truck. • Changed fueling site in Oakdale for cost savings to Public Works on unleaded and diesel fuel. • Provided training to mechanics for improved diagnostic and hydraulic skills. • Provided training to mechanics for Allen Bradley POC electronic controls for CNG station. • Passed gas station audit performed by the San Joaquin Valley Air Pollution District. • Created a fuel reserve fund to prevent sizeable overhead charges in fuel costs billed to other departments.

2009 Forecasted Projects
<ul style="list-style-type: none"> • Enhance accident prevention training for road personnel on equipment operation. • Acquire data for Air Resource Board regulations for in-use off road diesel equipment. • Continue purchase of Compressed Natural Gas Vehicles “CNG” vehicles using CMAQ grant funds. (Currently Public Works owns 34 CNG, ranging in size from a small sedan to a 62,000 lbs. GVW unit). Vehicles included are 4 Heavy Duty CNG Trucks: Water Truck, Spray Truck, Lube/Mechanic Truck, and Knuckle Boom Truck, 6 Medium Duty CNG Trucks: Asphalt Patch Truck, Bobtail Dump Truck, Survey Truck, 2 Legend Trucks, and a Flatbed Dump Truck. • Purchase a Diesel Road Grader. • Increase training for shop personnel to enhance performance on fuel and fleet Maintenance Management Systems. • Develop a plan to fuel CNG vehicles in the City of Riverbank. • Analyze off road construction tires for increased performance and cost savings.





Transit Division Brad Christian, Manager

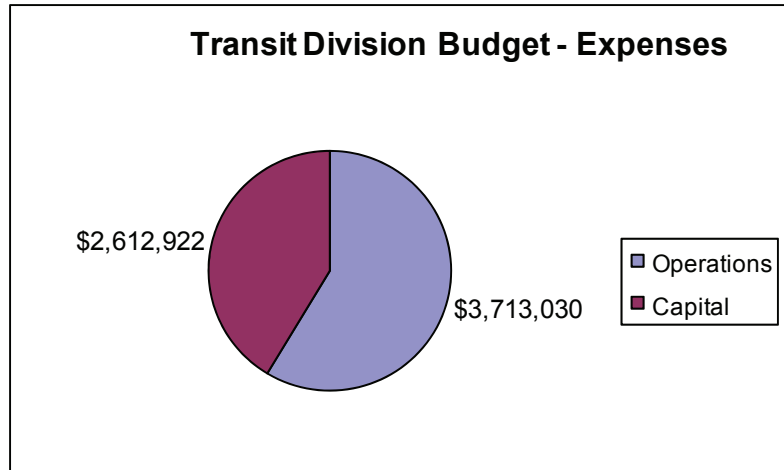
- The Public Works Transit Division oversees the operation of Stanislaus Regional Transit (“StaRT”), the County’s intercity public transportation system.
- StaRT operates thirteen different services, providing fixed route, deviated fixed route, demand response and Medivan non-emergency medical transportation to seventeen cities and communities.
- Through the Bay Area Medivan, StaRT provides non-emergency medical transportation to Bay Area medical facilities.
- The Transit Division, through Memorandums of Understanding, operates Dial-a-Ride services for the cities of Newman, Patterson and Waterford.



From Left to Right:
Stacie Morales,
Doralee Boles, Brad Christian,
and Annette Borrelli

Transit Division

- FY 08/09 Transit Division budget is \$6,325,952 (\$3,713,030 operations and \$2,612,922 capital costs).



The funding sources are:

LTF – Transportation Development Act Local Transportation Funds - Derived from a quarter cent of the state sales tax.

STAF – Transportation Development Act State Transit Assistance Funds - Derived from the statewide sales tax on gasoline and diesel fuel.

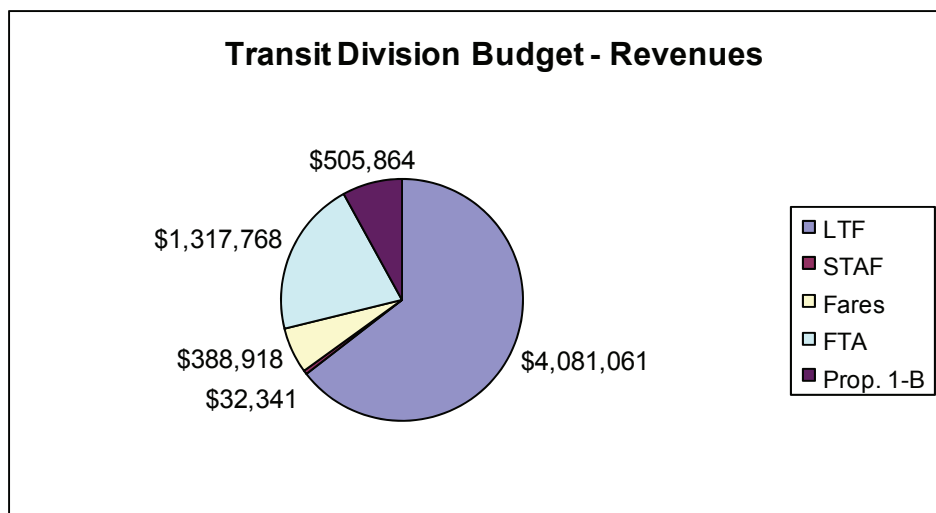
Proposition 1-B Transit Funds

Federal Transit Administration (FTA) –

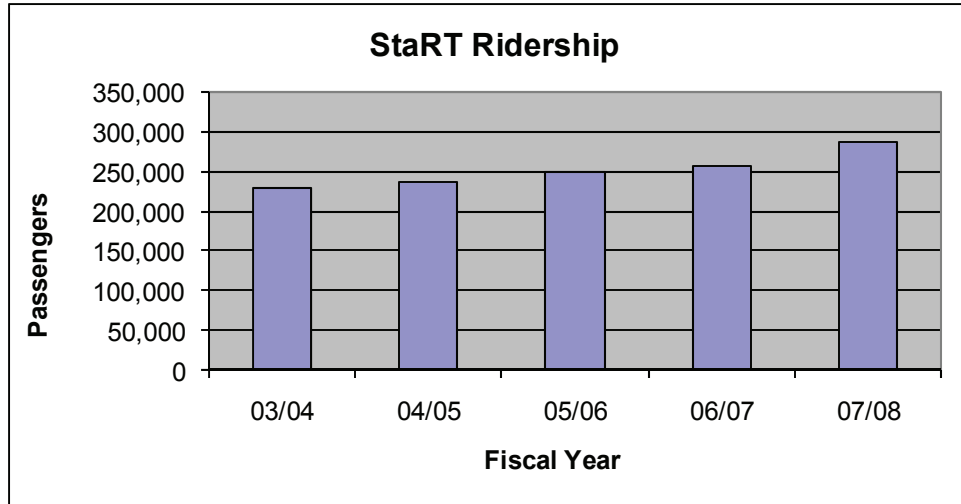
5311 –Federal non-urbanized area grant

5311(f) – Federal Intercity grant

CMAQ – Federal Congestion Mitigation Air Quality grant



Transit Division



- StaRT ridership has increased 24.45% in the last 5 years.



- In FY 07/08, StaRT buses carried 16,484 bikes on its routes.

Transit Division



Did you know that StaRT ridership was up 10.30% in FY 07/08, while the national average was about 4.00%?

Did you know that according to the American Public Transit Association, a \$1.00 in public transit investment yields \$6.00 in economic activity?





Support Services / Finance

Diane Haugh, Assistant Director Business Services

2008 Accomplishments

The **Finance Division** has been continually improving processes to ensure that any costs incurred by the use of County Purchasing Cards are in strict accordance with County Policy and Procedure. With improvements, purchasing card audit initial findings have declined by 99% over the past 5 years.

- Fiscal Year 03/04: 170 initial audit findings
 - Fiscal Year 04/05: 125 initial audit findings
 - Fiscal Year 05/06: 25 initial audit findings
 - Fiscal Year 06/07: 14 initial audit findings
 - Fiscal Year 07/08: 2 initial audit findings
-
- **Telephones:** Eliminated duplication of desk phones and cellular phones for an annual savings of approximately \$7,000.
 - **County Service Areas:** Implemented a tracking process to monitor monthly activities of 20 County Service Areas (CSA) and 8 Landscape and Lighting Districts (LLD).
 - **New Trip Authorization Form:** Combined the training request form and trip authorization form, providing all information needed for audits.
 - **Cash Receipts:** Installed a new module to our Cost Accounting Management System software that enables recording and tracking of receipts, improving efficiency and reducing the amount of paper used by approximately 50%.
 - **Road Trust/Trust Accounts:** Transferred \$230,000 from Road Trust to the Road Fund for inspections of subdivisions and other projects within the county.
 - **Honor Farm:** Finalized an agreement with the Sheriff's Department for the services of Honor Farm inmates to perform roadside cleanup and CSA drainage pond maintenance, thereby reducing the cost for these services.
 - **FEMA:** Submitted documentation and received reimbursement of \$106,129.41 from FEMA for the 2006 Spring floods.
 - **Annual Road Report:** Completed and submitted the 2007 Annual Road Report to the State.
 - **Roads Materials Inventory:** Reviewed and updated the process for accounting for Road Material Inventory to more accurately track costs.
 - **CalTrans:** Invoiced Cal Trans a total of \$3,745,761 since January 2008, for project reimbursement.

Support Services / Finance

Administrative support section provides clerical support to other Public Works' divisions. Support individuals are located at Tenth Street Place and Morgan Road. Their tasks include preparation of board items, human resources, safety, and a variety of miscellaneous but highly necessary tasks required for smooth day-to-day operations.

Achievements:

- Processed 101 Board Agenda items year to date
- Conducted 21 recruitments

2009 Goals

- **CAMS to PeopleSoft:** Facilitate direct upload of payroll information from CAMS to Peoplesoft. At present, time card information is entered into both systems. When the process is completed, timecard entry will be done only once in CAMS, for cost allocation, and uploaded into Peoplesoft for payroll processing.
- **Cross training:** Develop task binders for each position, documenting the “what and how” of tasks performed. Utilize the binders and existing resources to cross train in all clerical and accounting positions.
- Identify areas of improvement for Public Works' internet and intranet sites to improve employee and public access to information.



Sharon Andrews



Jayne Sissle



From Left to Right: Keimi Espinoza,
Janelle Godinez, Letisia Corona

Safety

Public Works' Safety Analyst is responsible for implementing the safety training, education, and continued monitoring and updating of compliance mandates as set forth by Stanislaus County and Cal OSHA. This includes analyzing accidents and injuries to determine causation and implementing preventive measures and education to the employees of the department of Public Works. The safety analyst works closely with the safety representatives of each division to determine areas of needed training and education. This position was added to Public Works in 2006. Since that time there has been continued improvement in the department's safety results.

Accomplishments

2007

24 injuries
21 injuries required restrictions
237 lost work days due to injury
\$168,000 in incurred cost from injury

2008

11 injuries
5 injuries required restrictions
30 lost work days due to injury
\$ 91,000 in incurred cost from injury

Did you know?

- Most common day for an injury to occur is Monday.
- Most common injury is a strain.



Laura Janovich



Geographic Information Systems

Peou Khiek, Manager

Geographic Information Systems (GIS) is a transforming technology allowing the County to view and analyze data from a geographic perspective. It can integrate different systems to save valuable resources and streamline workflow processes. Stanislaus County Public Works staff are responsible for but not limited to the maintenance of the County's GIS basemap and layers. In addition, they also provide mapping services to other county departments and agencies.

2008 Accomplishments

- Server Reconfiguration (production and test use postgresQL) — using postgresQL as a back-end database for GIS provided approximately \$20,000 in savings
- Spatial Databases Engine (SDE) - test and production SDE environments are in place.
- Acquired 2008 Aerial (one foot resolution)
- Completed Basemap Revision (Road Alignment)
- Parcels Update (continual process)
- Routine maintenance and update of layers.
- Maps (Duck Blinds, Water Atlas, Inundation maps (OES), Population maps)
- Major Users (Planning, Building, Public Works, Ag Commission, Sheriff, Election, SBT, Board of Supervisors)
- Established relationship with City of Modesto for the sharing of information
- Acquired irrigation information from OID, TID, and MID (to aid in canal realignment project and for inclusion into the County's Water Atlas)
- Standardized Maps Products
- Beta GIS website (internet and intranet) - using latest ESRI javascript API and also leveraging Google maps API
- Combined SBT/PW maintenance quotes into one to avoid duplication



Goals

1. Establish a GIS Governance Framework
 - Senior Level Steering Committee
 - Formalize Users Group
2. Develop Stanislaus County GIS Support Capacity
 - Mandate, house, coordinate and manage GIS
 - Establish shared GIS expert resource
3. Establish a GIS Technology Framework
 - Centralized GIS data repository and GIS Server
 - Develop web based GIS
4. Build Staff Capacity
 - Develop customized GIS training for users
5. Provide Information, Coordination, Standards and Maintenance
 - Establish common content standards for geodatabase
 - Establish GIS standards for spatial representation



From Left to Right:
Bill Fischer, Roma Kahlon,
Aron Harris and Mike Wilson

Community Involvement



Public Works contributed \$870 in 2007/2008 towards United Way services for the community.



Public Works been involved in the Heart Walk since 2003. It consists of a 3.2 mile walk/run which raises money for the American Heart Association. The team for Public Works gathered \$ 3,891.42 for this worthy cause in 2008.



The Stanislaus County Employee Mentor program marked its 10th anniversary with the 08/09 School Year. This program is administered by United Way. Reading specialists from the participating Modesto City Schools pair a Stanislaus County Employee with a student who needs help with reading. Employee Mentors read with their protégées for half hour, up to 2 times per week at the school. The effectiveness of the program is not limited to reading skills. Our Director Matt volunteered for this and noticed that his protégée, William, was having difficulty seeing words and suspected he needed glasses. After much encouragement from Matt, William finally got his glasses and the improvement was immediately evident. Matt Machado was honored with Outstanding Mentor of the Year for the 07/08 School Year.

Community Retreat

The Public Works Department participates in the annual community retreat held at the Agricultural Center. This provides an opportunity for staff to share information about service the department provides to the community.



CONTACT US

Department of Public Works

Email: publicworks@stancounty.com

Website: www.stancounty.com/publicworks

1010 10th St., 3rd Floor, Suite 3500, Modesto 95354

Administration	525-6550
Fax	525-6507
Permits (Encroachments)	525-6550
Fax	525-4338
Permits (Transportation)	525-6550
Fax	525-4338
Surveyor	525-6550
Transit	525-6552
Fax	525-4332

1716 Morgan Road, Modesto 95358

Engineering	525-4130
Fax	525-4188
Morgan Shop	525-4139
Fax	525-4166
Road Operations	525-4130
Fax	525-4140
Traffic	525-4165
Fax	525-4188

BOARD OF SUPERVISORS



Dick Monteith



Jeff Grover



Jim DeMartini



Vito Chiesa



William O'Brien

2008 Board of Supervisors

District 1— William O'Brien

District 2— Vito Chiesa

District 3— Jeff Grover

District 4— Dick Monteith

District 5— Jim DeMartini