

THE BOARD OF SUPERVISORS OF THE COUNTY OF STANISLAUS
ACTION AGENDA SUMMARY

DEPT: Public Works *med*

BOARD AGENDA # *C-1

Urgent Routine

AGENDA DATE August 5, 2008

CEO Concurs with Recommendation YES NO
(Information Attached)

4/5 Vote Required YES NO

SUBJECT:

Approval to Adopt Plans and Specifications for the Irrigation Relocation for McHenry Avenue at Ladd Road Project and Set the Bid Opening Date and Time for September 17, 2008, 2:30 P.M.

STAFF RECOMMENDATIONS:

1. Adopt plans and specifications for the Irrigation Relocation for McHenry Avenue at Ladd Road Project and set the bid opening date and time for September 17, 2008, 2:30 P.M.
2. Direct the Clerk of the Board to publish notice inviting bids for the project as required by law and set September 17, 2008, prior to 2:30 P.M., as the deadline for submission of bids.
3. Direct the Public Works Department staff to mail a notice inviting bids to trade journals as required by law.

FISCAL IMPACT:

The total estimated cost for this project is \$660,000. This project is funded through Public Facility Fees. At this time, \$5,000 is required for reproduction costs, advertisement costs and other miscellaneous costs associated with the bid process.

BOARD ACTION AS FOLLOWS:

No. 2008-573

On motion of Supervisor Monteith, Seconded by Supervisor O'Brien
and approved by the following vote,

Ayes: Supervisors: O'Brien, Grover, Monteith, DeMartini and Chairman Mayfield

Noes: Supervisors: None

Excused or Absent: Supervisors: None

Abstaining: Supervisor: None

1) X Approved as recommended

2) _____ Denied

3) _____ Approved as amended

4) _____ Other:

MOTION:

Christine Ferraro

ATTEST: CHRISTINE FERRARO TALLMAN, Clerk

File No. M-64-H-9

Approval to Adopt Plans and Specifications for the Irrigation Relocation for McHenry Avenue at Ladd Road Project and Set the Bid Opening Date and Time for September 17, 2008, 2:30 P.M.

DISCUSSION:

In June 2004, the Board of Supervisors awarded a contract to Wood Rodgers for engineering, environmental, and right-of-way acquisition services for the Ladd Road at McHenry Avenue Intersection Improvements. The intersection improvements include the addition of travel lanes and traffic signals in all four directions. In advance of the intersection improvements, it is necessary to extend a Modesto Irrigation District irrigation canal crossing at McHenry Avenue and relocate an irrigation line to the north and south of the canal.

In July 2007, a Notice of Determination was filed with the County Clerk Recorder's Office that the project was in compliance with Section 21108 or 21152 of the Public Resource Code and the Mitigated Negative Declaration document pursuant to CEQA Guidelines Section 15074(B) was adopted.

On June 30, 2008, the Design Division of the Department of Public Works certified that all necessary rights-of-way have been obtained to complete the project.

Currently, this project is scheduled for a bid opening of September 17, 2008, and project award on October 21, 2008. Construction would begin approximately mid to late November.

POLICY ISSUES:

The Board should consider if the recommended actions are consistent with its priorities of providing a safe community, a healthy community and a well-planned infrastructure system.

STAFFING IMPACT:

There is no staffing impact associated with this item.

**ATTACHMENTS AVAILABLE
FROM YOUR CLERK**

CB:sr

L:\roads\9709 - ladd road at mchenry ave\design division\board items\adopt & bid 07_02_08.docadopt&bid8-5-08

Newspaper Advertisement

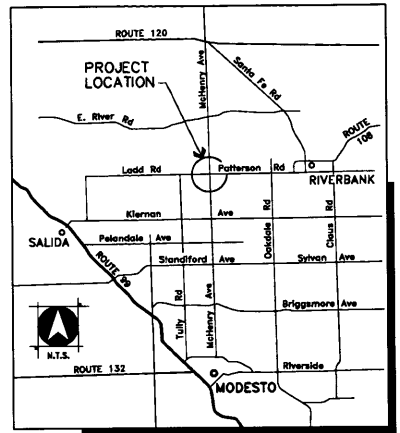
INVITATION TO CONTRACTORS

McHenry Avenue at Ladd Road project. Estimated Construction cost for this project is between \$605,200.00 and \$ 665,720.00. The work to be accomplished includes removing existing irrigation system, installing 36 inch RCP pipe, constructing irrigation structures and other such items not mentioned herein that are required by the plans and specifications. Bid envelopes must be delivered to the Clerk of the Board of Supervisors prior to 2:30 P.M., September 17, 2008. All questions must be submitted in writing. Email your questions to bradyc@stancounty.com or fax your questions to 209-525-4188, Attn: Chris Brady. Plans and specifications are available for purchase from Stockton Blue, Modesto, CA 209-524-2924 and can be viewed at www.stocktonblue.com under "Public Plan Room".

IRRIGATION RELOCATION PLANS FOR McHENRY AVENUE AT LADD ROAD STANISLAUS COUNTY

GENERAL NOTES:

- PRIOR TO EXCAVATING NEAR ANY UNDERGROUND UTILITIES, CALL U.S.A. AT LEAST FORTY-FOUR (48) HOURS IN ADVANCE.
- THESE PLANS HAVE BEEN CHECKED BY STANISLAUS COUNTY AND/OR ITS AUTHORIZED REPRESENTATIVE, BUT SUCH CHECKING AND/OR APPROVAL DOES NOT RELIEVE THE CONTRACTOR FROM HIS/HER RESPONSIBILITY TO CORRECT ERRORS, OMISSIONS OR MAKE CHANGES REQUIRED BY CONDITIONS DISCOVERED IN THE FIELD DURING THE COURSE OF CONSTRUCTION.
- CONTRACTOR SHALL CONTROL DUST AT ALL TIMES DURING CONSTRUCTION AS REQUIRED BY THE STANISLAUS COUNTY AND THE REGIONAL AIR QUALITY CONTROL BOARD.
- THE CONTRACTOR SHALL BE RESPONSIBLE FOR THE PROTECTION OF ALL EXISTING SURVEY MONUMENTS AND OTHER SURVEY MARKERS DURING CONSTRUCTION. ALL SUCH MONUMENTS OR MARKERS DESTROYED DURING CONSTRUCTION SHALL BE REPLACED AT THE CONTRACTOR'S EXPENSE.
- ALL CONSTRUCTION STAKING FOR IRRIGATION FACILITIES SHALL BE DONE UNDER THE DIRECTION OF A REGISTERED CALIFORNIA LICENSED SURVEYOR OR ENGINEER OPERATING WITHIN THE SCOPE OF THEIR LICENSE.
- THE CONTRACTOR SHALL NOT PERFORM ANY EXCAVATION UNTIL ALL UTILITY COMPANIES AND STANISLAUS COUNTY HAVE BEEN NOTIFIED AND HAVE BEEN GIVEN THE OPPORTUNITY TO MAKE THEIR FACILITIES IN THE FIELD.
- THE TYPES, LOCATIONS, SIZES, AND/OR DEPTHS OF EXISTING UNDERGROUND UTILITIES AS SHOWN ON THESE IMPROVEMENT PLANS WERE OBTAINED FROM SOURCES OF VARYING RELIABILITY. THE CONTRACTOR IS CAUTIONED THAT ONLY ACTUAL EXCAVATION WILL REVEAL THE TYPES, EXTENT, SIZES, LOCATIONS, AND DEPTHS OF SUCH UNDERGROUND UTILITIES. A REASONABLE EFFORT HAS BEEN MADE TO LOCATE AND DELINEATE ALL KNOWN UNDERGROUND UTILITIES. HOWEVER, WOOD-RODGERS, INC. CAN ASSUME NO RESPONSIBILITY FOR THE COMPLETENESS OR ACCURACY OF ITS DELINEATION OF SUCH UNDERGROUND UTILITIES NOR FOR THE EXISTENCE OF OTHER BURIED OBJECTS OR UTILITIES WHICH MAY BE ENCOUNTERED BUT WHICH ARE NOT SHOWN ON THESE DRAWINGS.
- THIS PROJECT SHALL BE CONSTRUCTED PURSUANT TO CALTRANS STANDARD PLANS AND SPECIFICATIONS, MAY 2004, AND ALL CURRENT ADDENDA THEREIN.



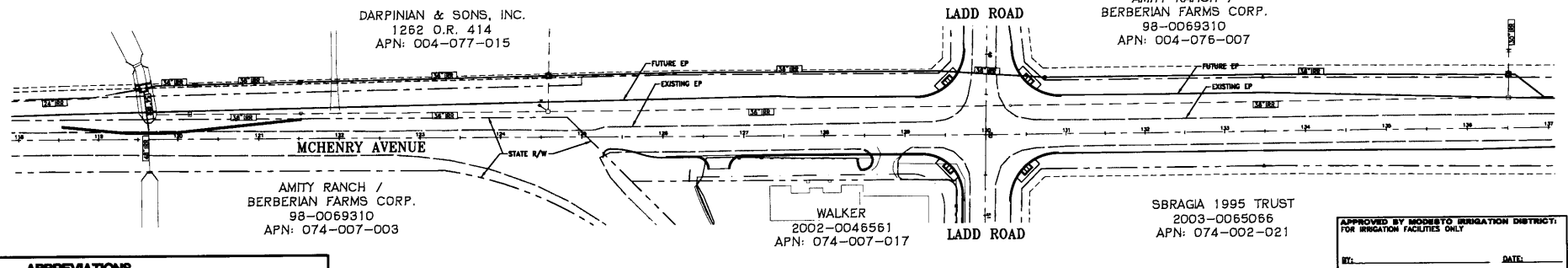
VICINITY MAP

SHEET INDEX

- TITLE SHEET
- DEMOLITION PLAN
- IRRIGATION PROFILE STA 118+50 TO STA 128+00
- IRRIGATION PROFILE STA 128+00 TO STA 137+00
- MISCELLANEOUS DETAILS 1
- MISCELLANEOUS DETAILS 2
- MISCELLANEOUS DETAILS 3
- MISCELLANEOUS DETAILS 4
- TRAFFIC HANDLING PLAN
- CONSTRUCTION AREA SIGNS

EXISTING	PROPOSED	DESCRIPTION
		IRRIGATION LINE AND SIZE
		TRAFFIC SIGN AS NOTED
		GAS, TELEPHONE OR ELECTRIC
		RIGHT-OF-WAY
		STREET LIGHT
		TREE TO BE REMOVED/RELOCATED
		SPOT ELEVATION
		UTILITY POLE

UTILITY REPRESENTATIVES			
UTILITY	COMPANY & CONTACT	PHONE	
GAS	P.G. & E. MICHELLE MYLES	209-576-8564	
ELECTRIC	MODESTO IRRIGATION DISTRICT GREG AYER	209-526-7428	
IRRIGATION	MODESTO IRRIGATION DISTRICT BILL KETSCHER	209-526-7564	
TELEPHONE	CHARTER COMMUNICATIONS TOM SHEARS	209-633-3311	
TELEPHONE	A.T.&T. BRIAN MONTGOMERY	209-548-5800	
CATV	COMCAST JAMES SANCOCK	209-550-2132	
U.S.A.		1-800-642-2444	



ABBREVIATIONS			
Q.C.L.	CENTER LINE	MH	MANHOLE
CONST.	CONSTRUCT	M.I.D.	MODESTO IRRIGATION DISTRICT
DI	DROP INLET	MIN.	MINIMUM
ELEV.	ELEVATION	O.C.	ON CENTER
EP	EDGE OF PAVEMENT	PL	PROPERTY LINE
EX	EXISTING	PROP	PROPOSED
FL	FLOW LINE	PUE	PUBLIC UTILITY EASEMENT
GB	GRADE BREAK	P.V.C.	POLYVINYL CHLORIDE
IMPS	IMPROVEMENTS	R.C.P.	REINFORCED CONCRETE PIPE
L.T.	LEFT	R/W	RIGHT OF WAY
LF	LINEAR FEET	STA.	STATION
MAX.	MAXIMUM	TYF.	TYPICAL

APPROVED BY MODESTO IRRIGATION DISTRICT FOR IRRIGATION FACILITIES ONLY

BY: _____ DATE: _____

APPROVAL OF THESE PLANS DOES NOT RELEASE THE DEVELOPER FROM RESPONSIBILITY FOR CORRECTION OF MISTAKES, ERRORS OR OMISSIONS CONTAINED THEREIN. IF DURING THE COURSE OF CONSTRUCTION THE PUBLIC INTEREST REQUIRES A MODIFICATION OR A DEPARTURE FROM THE SPECIFICATIONS, OR THE APPROVED PLANS, THE DEVELOPER SHALL HAVE THE AUTHORITY TO REQUIRE SUCH MODIFICATION OR DEPARTURE, AND TO SPECIFY THE MANNER IN WHICH THE SAME IS MADE.

APPROVED BY: _____ DATE: _____

MATTHEW MACHADO, PE
DIRECTOR OF PUBLIC WORKS
APPROVED AS TO FEATURES AFFECTING
STANISLAUS COUNTY FACILITIES

WOOD-RODGERS
ENGINEERS - SURVEYORS - PLANNERS - SURVEYORS
9801 G St., Modesto, CA 95208 Tel: (209) 461-7788 Fax: (209) 461-7782

DATE: MAY 2008
DRAWN BY: DRG
DESIGNED BY: D.B.
CHECKED BY: D.B.
APPROVED BY: _____
SCALE: AS SHOWN

DATE: 6-20-08
ENGINEER SIGNATURE, P.E. *David J. Hultsch*



NO.	REVISION	DATE	BY

IRRIGATION IMPROVEMENT PLANS FOR
**McHENRY AVENUE AT
LADD ROAD**
TITLE SHEET

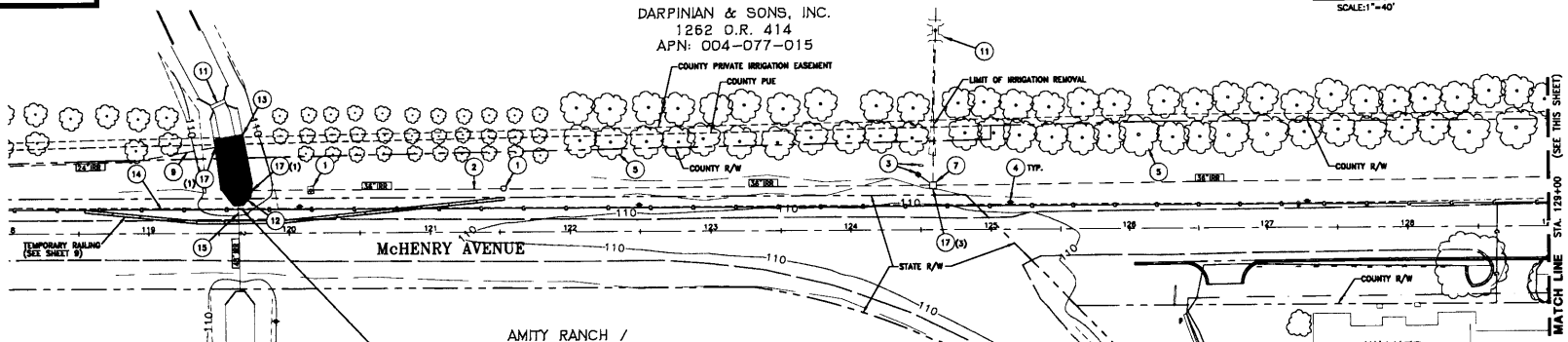
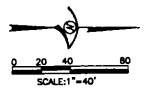


COUNTY OF STANISLAUS
DEPARTMENT OF PUBLIC WORKS

FILE NO.: _____ SHEET OF _____
INVENTORY NO.: _____ 1 10

EXISTING OVERHEAD UTILITY NOTE

CAUTION
CONSTRUCTION ACTIVITY MAY TAKE PLACE IN THE VICINITY OF OVERHEAD ELECTRIC TRANSMISSION LINES. IT IS THE CONTRACTOR'S RESPONSIBILITY TO BE AWARE OF, AND OBSERVE, THE MINIMUM CLEARANCES FOR WORKERS AND EQUIPMENT OPERATING NEAR HIGH VOLTAGE ELECTRIC LINES AS SET OUT IN THE HIGH VOLTAGE SAFETY ORDERS OF THE CALIFORNIA DIVISION OF INDUSTRIAL SAFETY AS WELL AS OTHER APPLICABLE SAFETY REGULATIONS.



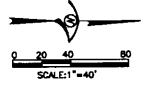
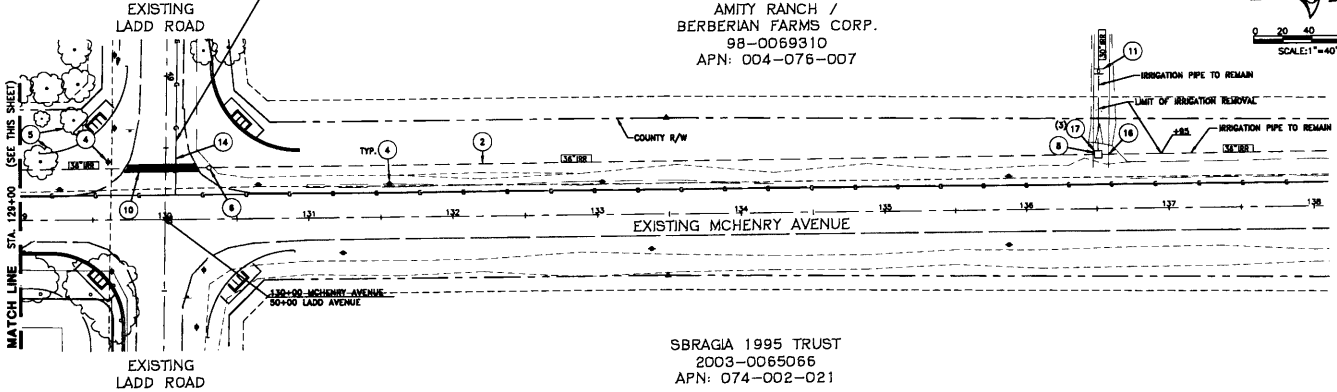
- DEMOLITION NOTES:**
- 1 REMOVE EXISTING IRRIGATION FIELD VALVE STRUCTURE AND APPURTENANCES.
 - 2 REMOVE 1877' LF EXISTING 30" IRRIGATION PIPE (STA. 118+74 TO 126+95)
 - 3 EXISTING IRRIGATION WELL AND CONTROL PANEL TO BE ABANDONED PER STANISLAUS COUNTY STANDARDS. (BY OTHERS) THE CONTRACTOR SHALL OBTAIN NOTICE TO PROCEED FROM STANISLAUS COUNTY PUBLIC WORKS PRIOR TO THE REMOVAL OF THE IRRIGATION STRUCTURE (SEE NOTE 7 BELOW)
 - 4 CONTRACTOR SHALL TAKE PRECAUTIONS TO KEEP EXISTING UTILITY POLES UNDISTURBED. CONTRACTOR SHALL COORDINATE WITH RESPECTIVE UTILITY COMPANY FOR REQUIREMENTS.
 - 5 EXISTING ORCHARD TREES TO BE REMOVED AS REQUIRED (BY OTHERS).
 - 6 EXISTING IRRIGATION AIR VENT TO BE REMOVED.
 - 7 EXISTING IRRIGATION CONTROL BOX AND 42 LF EXISTING IRRIGATION LINE(S) TO BE REMOVED.
 - 8 EXISTING IRRIGATION CONTROL BOX AND 28 LF EXISTING IRRIGATION LINE(S) TO BE REMOVED.
 - 9 REMOVE 25 LF EXISTING IRRIGATION LINE.
 - 10 SAWCUT EXISTING PAVEMENT AS REQUIRED TO REMOVE EXISTING IRRIGATION LINE. BACKFILL AND REPAVE PER STANISLAUS COUNTY STD. PLATE 3-11. (SEE SHEET 4)
 - 11 EXISTING STRUCTURE TO REMAIN UNDISTURBED
 - 12 EXISTING CONCRETE HEADWALL TO BE REMOVED. CONTRACTOR TO TAKE PRECAUTION NOT TO DAMAGE THE EXISTING IRRIGATION LINE CROSSING MACHINERY.
 - 13 SAWCUT EXISTING CONCRETE CANAL LINER AS REQUIRED FOR NEW HEADWALL INSTALLATION. REMOVE APPROXIMATELY 80' OF EXISTING CANAL LINING AND BACKFILL TO GRADE. COMPACT IN ACCORDANCE W/ THE GEOTECH'S RECOMMENDATIONS.
 - 14 P.A.B.E. MUST BE NOTIFIED AND ON SITE ANYTIME EXCAVATION IS OCCURRING WITHIN 2'-0" OF THEIR PIPELINE.
 - 15 REMOVE 8" LF EXISTING 48" IRRIGATION PIPE. SEE SHEET 3 FOR DETAILS.
 - 16 REMOVE 3 LF OF EXISTING IRRIGATION LINE AND PLUG END OF EXISTING PIPE PER MD STD FILE C 33.
 - 17 CONTRACTOR TO SALVAGE GATE VALVE ASSEMBLY FOR RELOCATION TO N.J.S. STANDARDS.

AMITY RANCH /
BERBERIAN FARMS CORP.
98-0069310
APN: 074-007-003

LOCATION OF GAS LINE APPROXIMATED THROUGHOUT THE ENTIRE PROJECT - CONTRACTOR SHALL FIELD VERIFY DEPTH AND LOCATION PRIOR TO DEMOLITION ACTIVITIES.

AMITY RANCH /
BERBERIAN FARMS CORP.
98-0069310
APN: 004-076-007

SBRAGIA 1995 TRUST
2003-0065066
APN: 074-002-021



WOOD RODGERS
INCORPORATED
28001 C St. Suite 100-B
Sacramento, CA 95829
Tel: 916.241.7790
Fax: 916.241.7797

DATE: MAY, 2008
DRAWN BY: DRG
DESIGNED BY: D.B.
CHECKED BY: D.B.
APPROVED BY:
SCALE: AS SHOWN

DATE: 6-20-08
ENGINEER SIGNATURE, P.E.
Keith J. Hallett



NO.	REVISION	DATE	BY

IRRIGATION IMPROVEMENT PLANS FOR
**McHENRY AVENUE AT
LADD ROAD
DEMOLITION PLAN**



COUNTY OF STANISLAUS
DEPARTMENT OF PUBLIC WORKS

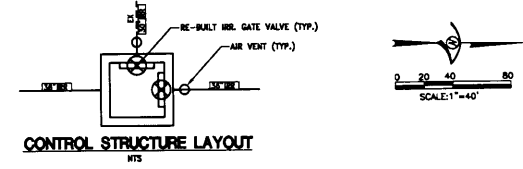
FILE NO.:	SHEET OF
INVENTORY NO.:	2 10

EXISTING OVERHEAD UTILITY NOTE

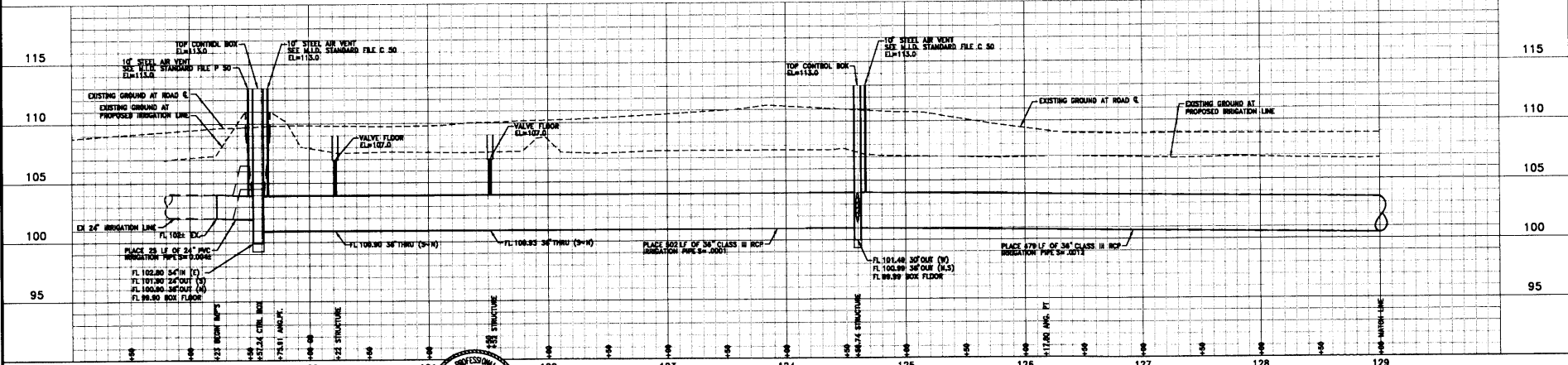
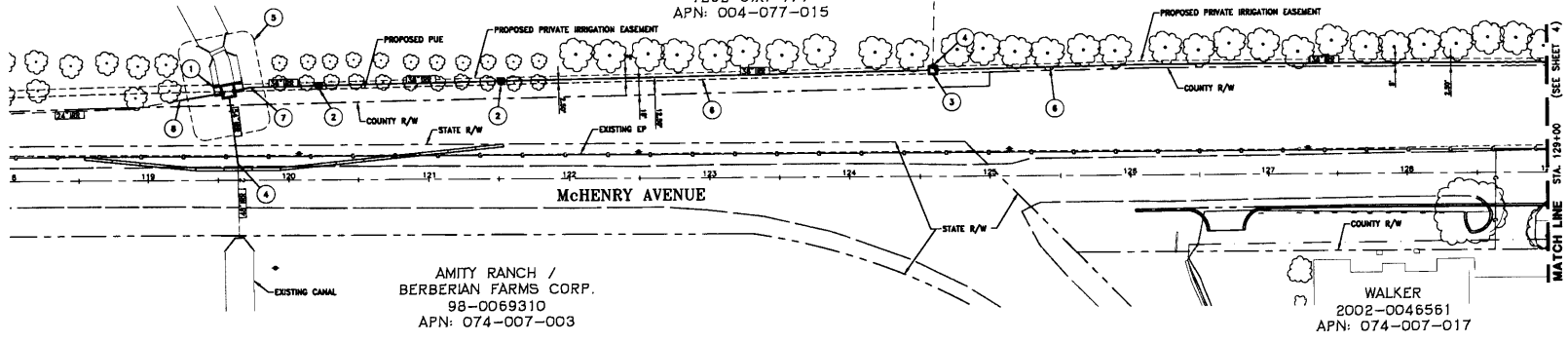
CAUTION
CONSTRUCTION ACTIVITY MAY TAKE PLACE IN THE VICINITY OF OVERHEAD ELECTRIC TRANSMISSION LINES. IT IS THE CONTRACTOR'S RESPONSIBILITY TO BE AWARE OF, AND OBSERVE, THE MINIMUM CLEARANCES FOR WORKERS AND EQUIPMENT OPERATING NEAR HIGH VOLTAGE ELECTRIC LINES AS SET OUT IN THE HIGH VOLTAGE SAFETY ORDERS OF THE CALIFORNIA DIVISION OF INDUSTRIAL SAFETY AS WELL AS OTHER APPLICABLE SAFETY REGULATIONS.

CONSTRUCTION NOTES: (FOR THIS SHEET ONLY)

1. CONSTRUCT CONC. CANAL HEADWALL AND CONTROL STRUCTURE & INSTALL SALVAGED IRRIGATION GATES. SEE DETAILS SHEETS S TO B. SALVAGED GATE VALVES SHALL BE RE-BUILT TO THE SATISFACTION OF M.I.D.
2. INSTALL NEW HORSE SHOE VALVE STRUCTURE PER M.I.D. STD FILE V 01.
3. INSTALL IRRIGATION CONTROL BOX AND SALVAGED GATE VALVES PER M.I.D. STD FILE C 10. SEE CONTROL STRUCTURE LAYOUT THIS SHEET FOR GATE VALVE ORIENTATION. SALVAGED GATE VALVES SHALL BE RE-BUILT TO THE SATISFACTION OF M.I.D.
4. CONNECT TO EXISTING IRRIGATION LINE WITH CONCRETE COLLAR PER M.I.D. STD FILE C 01.
5. SEE SHEET 5 FOR DETAILS AT EXISTING CANAL.
6. SEE DETAIL SHEET 4 FOR BACKFILL REQUIREMENTS.
7. CONSTRUCT CONCRETE COLLAR AT RCP ANGLE POINT PER MID STD FILE C-01.
8. CONNECT PVC PIPELINE TO EXISTING RCP WITH STARTER COUPLING PER M.I.D. STD FILE P 01.



DARPINIAN & SONS, INC.
1252 O.R. 414
APN: 004-077-015



WOOD ROGERS
ENGINEERS • PLANNERS • SURVEYORS
8801 G St., Suite 100-B
Sacramento, CA 95829
Tel 916-941-7780
Fax 916-941-7782

DATE: MAY, 2008
DRAWN BY: DG, TM
DESIGNED BY: DMS
APPROVED BY: DAB
SCALE: AS SHOWN

DATE: 6-20-08
ENGINEER SIGNATURE, P.E.
David J. Halliday



NO.	REVISION	DATE	BY

IRRIGATION IMPROVEMENT PLANS FOR
**McHENRY AVENUE AT
LADD ROAD**
IRRIGATION PROFILE
STA 118+50 TO STA 128+00



COUNTY OF STANISLAUS
DEPARTMENT OF PUBLIC WORKS

FILE NO.:	SHEET OF
INVENTORY NO.:	3 10

EXISTING OVERHEAD UTILITY NOTE

CAUTION
CONSTRUCTION ACTIVITY MAY TAKE PLACE IN THE VICINITY OF OVERHEAD ELECTRIC TRANSMISSION LINES. IT IS THE CONTRACTOR'S RESPONSIBILITY TO BE AWARE OF, AND OBSERVE, THE MINIMAL CLEARANCES FOR WORKERS AND EQUIPMENT OPERATING NEAR HIGH VOLTAGE ELECTRIC LINES AS SET OUT IN THE HIGH VOLTAGE SAFETY ORDERS OF THE CALIFORNIA DIVISION OF INDUSTRIAL SAFETY AS WELL AS OTHER APPLICABLE SAFETY REGULATIONS.

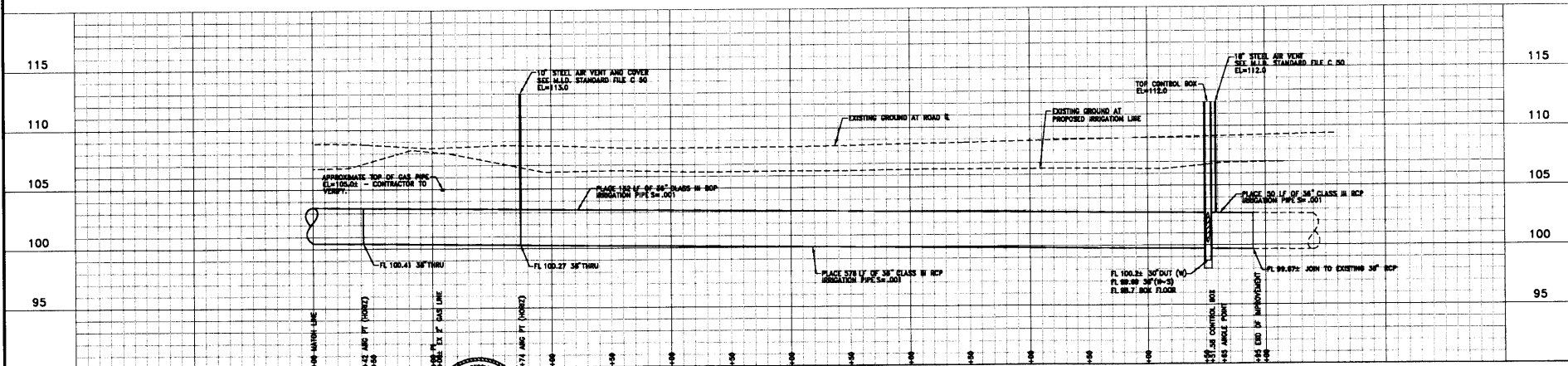
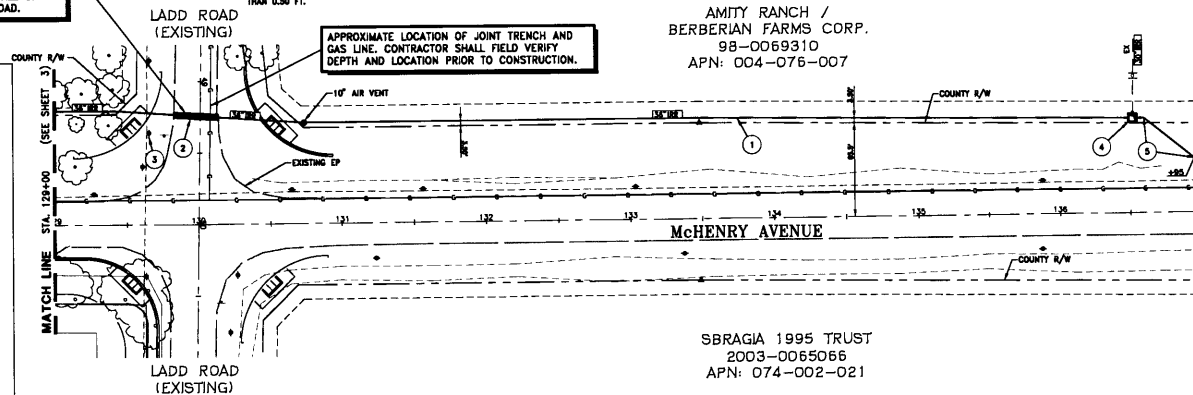
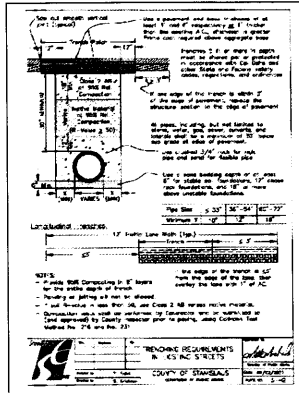
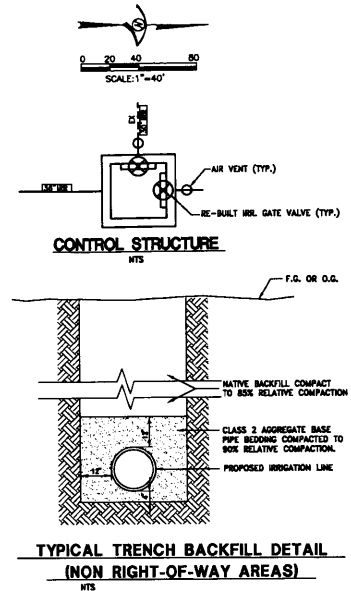
PRIOR TO CONSTRUCTION, THE CONTRACTOR SHALL PREPARE AND SUBMIT FOR APPROVAL A TRAFFIC CONTROL PLAN FOR THE INSTALL OF THE IRRIGATION PIPE ACROSS LADD ROAD.

CONSTRUCTION NOTES: (FOR THIS SHEET ONLY)

- SEE DETAIL THIS SHEET FOR BACKFILL REQUIREMENTS.
- SAW-CUT EXISTING PAVEMENT AS REQUIRED TO INSTALL PROPOSED IRRIGATION LINE. REPAVE PER STANISLAUS COUNTY STD. DRAWING S-402 ON THIS SHEET. THE AC SHOULD BE PLACED IN LIFTS NO GREATER THAN 0.20 FT. TO A THICKNESS NOT LESS THAN 0.20 FT.
- CONTRACTOR TO COORDINATE WITH RESPECTIVE UTILITY COMPANY TO ENSURE PROPER SHORING AND BRACING OF EXISTING UTILITY POLES DURING TRENCHING AND REPAVING.
- INSTALL IRRIGATION CONTROL BOX AND SALVAGED GATE VALVES PER M.I.D. STD FILE C 10. SEE CONTROL STRUCTURE LAYOUT THIS SHEET FOR GATE VALVE ORIENTATION. SALVAGED GATE VALVES SHALL BE RE-BUILT TO THE SATISFACTION OF M.I.D.
- CONSTRUCT CONCRETE COLLAR AT RCP ANGLE POINT PER M.I.D. STANDARD FILE C 01.

AMITY RANCH /
BERBERIAN FARMS CORP.
98-0069310
APN: 004-076-007

SBRAGIA 1995 TRUST
2003-0065066
APN: 074-002-021



WOOD RODGERS
ENGINEERS - ARCHITECTS - PLANNERS - SURVEYORS
58071 O St., Suite 100-B, Sacramento, CA 95829
Tel: 916.841.7780 Fax: 916.841.7782

DATE: MAY, 2008
DRAWN BY: DRG
DESIGNED BY: DAB
CHECKED BY: DAB
ENGINEER SIGNATURE, P.E. *David J. Hult*

DATE: 6-20-08

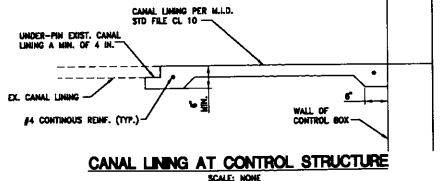
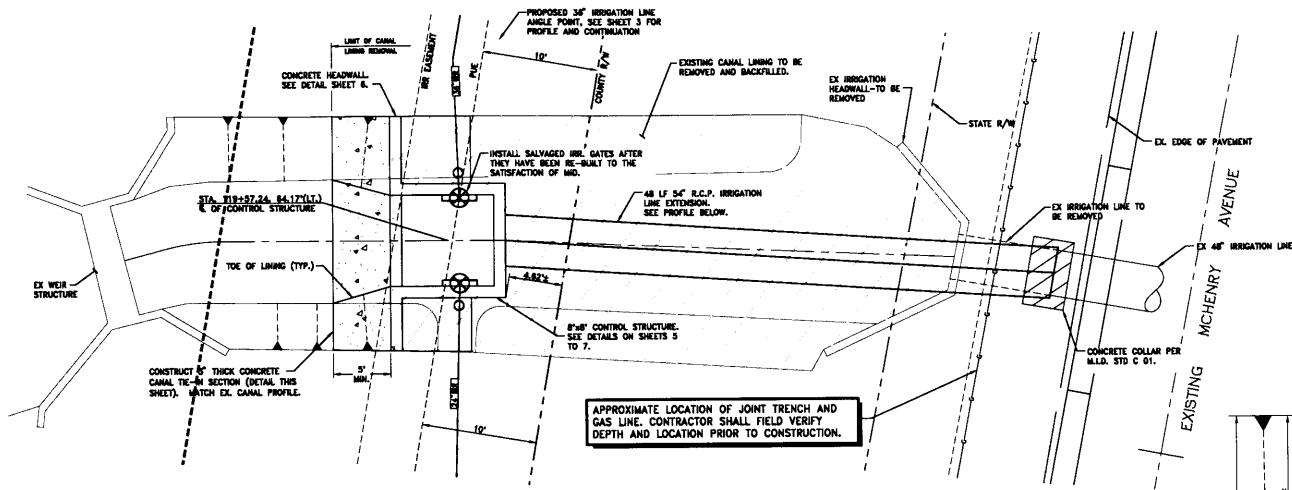
NO. REVISION DATE BY

IRRIGATION IMPROVEMENT PLANS FOR
**McHENRY AVENUE AT
LADD ROAD
IRRIGATION PROFILE
STA 129+00 TO STA 137+00**

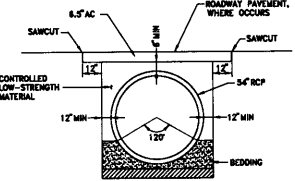
Stanislaus County
COUNTY OF STANISLAUS
DEPARTMENT OF PUBLIC WORKS

FILE NO.:
INVENTORY NO.:

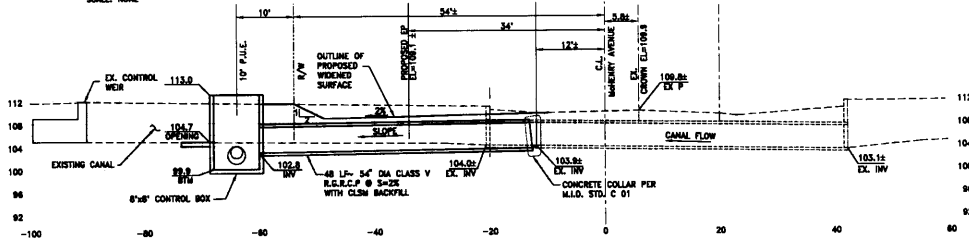
SHEET 4 OF 10



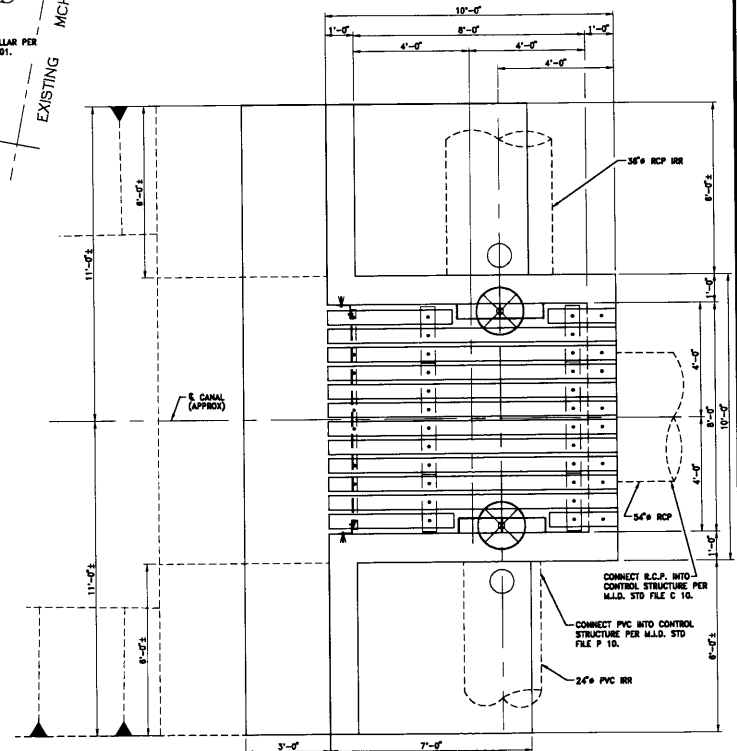
SITE PLAN
 (DR. MOORE LATERAL CROSSING)
 SCALE: 1"=5'



CLSM BACKFILL DETAIL
 SCALE: NONE



PROFILE
 SCALE:
 HORIZ: 1"=10'
 VERT: 1"=10'



8'x8' CONTROL STRUCTURE PLAN
 SCALE: 1/2" = 1'

WOOD ROGERS
 ENGINEERS - ARCHITECTS - PLANNERS - SURVEYORS
 8801 G ST., SUITE 100-B
 STEVENSON, GA 30078
 TEL: 978-541-7790
 FAX: 978-541-7792

DATE: MAY, 2008
 DRAWN BY: DG, TM
 DESIGNED BY: DMG
 CHECKED BY: DAB
 APPROVED BY:
 SCALE: AS SHOWN

DATE: 6-20-08
 ENGINEER SIGNATURE, P.E.
Robert J. Hultsch



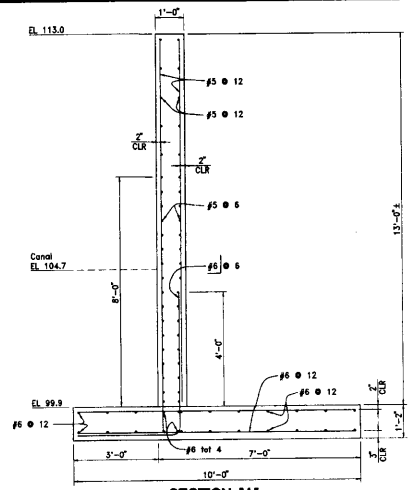
No.	REVISION	DATE	BY

IRRIGATION IMPROVEMENT PLANS FOR
**MC HENRY AVENUE AT
 LADD ROAD**
MISCELLANEOUS DETAILS 1

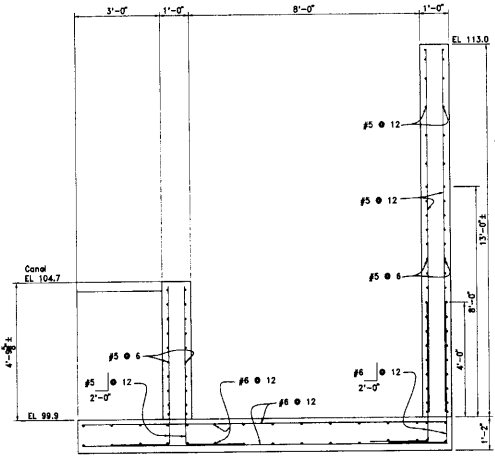


COUNTY OF STANISLAUS
 DEPARTMENT OF PUBLIC WORKS

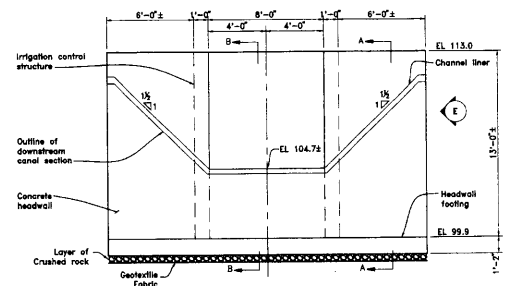
FILE NO.:
 INVENTORY NO.:
 SHEET OF
 5 10



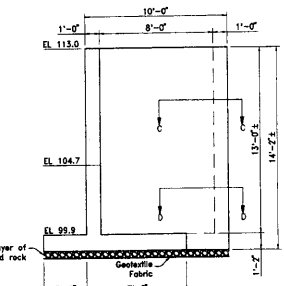
SECTION 'A'
SCALE: 1/2" = 1'



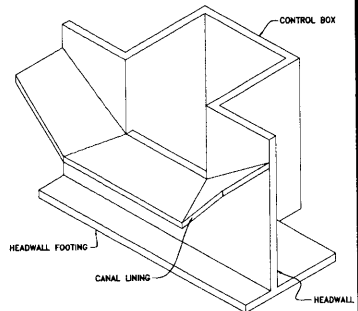
SECTION 'B'
SCALE: 1/2" = 1'



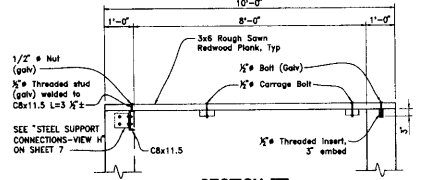
CONTROL STRUCTURE ELEVATION
SCALE: 1/4" = 1'



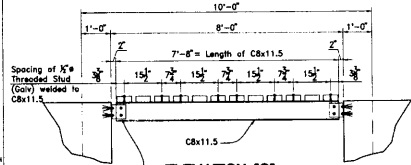
CONTROL STRUCTURE ELEVATION 'E'
SCALE: 1/4" = 1'



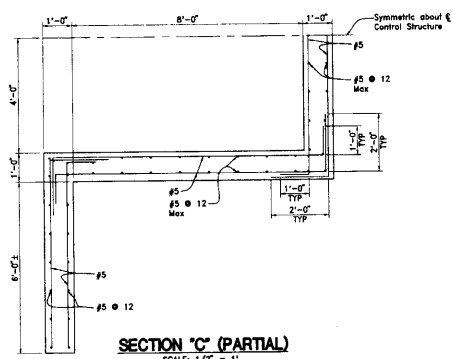
CONTROL STRUCTURE ISOMETRIC VIEW
NOT TO SCALE



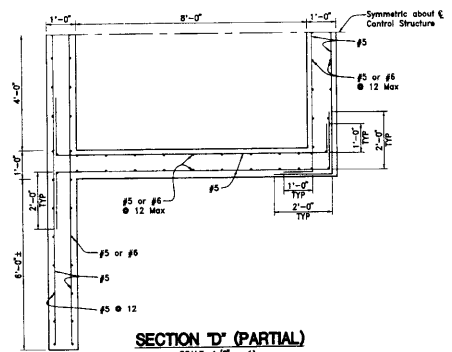
SECTION 'F'
SCALE: 1/2" = 1'



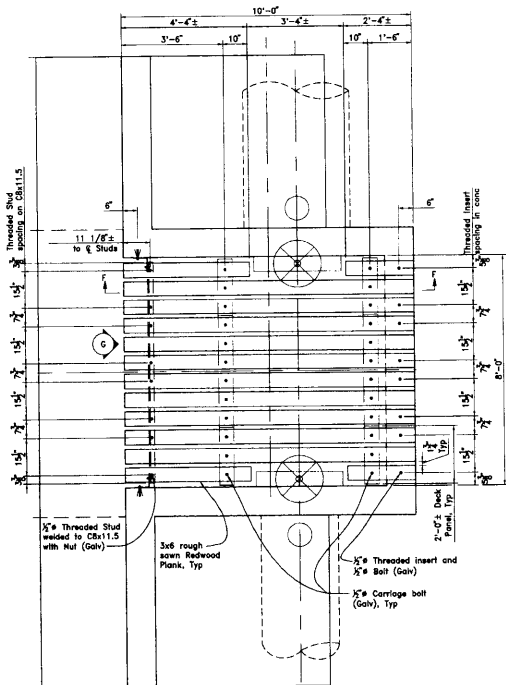
ELEVATION 'G'
SCALE: 1/2" = 1'



SECTION 'C' (PARTIAL)
SCALE: 1/2" = 1'



SECTION 'D' (PARTIAL)
SCALE: 1/2" = 1'



WOOD DECKING PLAN
SCALE: 1/2" = 1'

WOOD RODGERS
ENGINEERS - SURVEYORS - PLANNERS - SURVEYORS
5501 G St., Suite 100-B, Fair Oaks, CA 95628
Tel: 916.841.7780 Fax: 916.841.7787

DATE: MAY, 2008
DRAWN BY: HS
DESIGNED BY: GC
CHECKED BY: JM
APPROVED BY: [Signature]
DATE: July 23, 2008
ENGINEER SIGNATURE, P.E.



No.	REVISION	DATE	BY

IRRIGATION IMPROVEMENT PLANS FOR
McHENRY AVENUE AT LADD ROAD
MISCELLANEOUS DETAILS 2



COUNTY OF STANISLAUS
DEPARTMENT OF PUBLIC WORKS

FILE NO.:
INVENTORY NO.:
SHEET 6 OF 10

GENERAL NOTES

1. VERIFY ALL DIMENSIONS BEFORE STARTING WORK AND IMMEDIATELY NOTIFY THE ENGINEER OF ANY DISCREPANCIES.
2. NOTES AND DETAILS ON THE DRAWINGS SHALL TAKE PRECEDENCE OVER THE CONCRETE NOTES AND TYPICAL DETAILS.
3. PROVIDE #5 SPREADER BARS OR TIES AT 24 INCHES ON CENTER IN SLABS, BEAMS, GIRDERS, AND FOOTINGS TO KEEP MAIN REINFORCING IN PLACE.
4. NO PIPES OR DUCTS SHALL BE PLACED IN CONCRETE WALLS, PIERS, SLABS, OR FOOTINGS UNLESS SPECIFICALLY DETAILED.
5. JOINTS IN STRUCTURES SHALL BE LOCATED WHERE INDICATED ON THE DRAWINGS OR APPROVED CONCRETE PLACEMENT LIFT DRAWINGS.
6. CONSTRUCTION JOINTS NOT INDICATED ON THE DRAWINGS BUT REQUIRED FOR CONSTRUCTION SHALL BE KEPT AND DOWELED. JOINT SURFACES SHALL BE PREPARED IN ACCORDANCE WITH THE SPECIFICATIONS.
7. ALL WALLS, COLUMNS, PIERS, AND PILLARS SHALL BE DOWELED TO SUPPORTS AS INDICATED ON THE DRAWINGS.
8. STANDARD DETAILING DIMENSIONS TO BE IN ACCORDANCE WITH ACI DETAILS AND DETAILING OF CONCRETE REINFORCEMENT MANUAL ACI 315.

CONCRETE NOTES

DESIGN

1. STRUCTURAL DESIGN IS BASED ON 4,000 PSI COMPRESSIVE CONCRETE STRENGTH AT 28 DAYS AND REINFORCEMENT HAVING A YIELD STRENGTH OF 60,000 PSI.

DIMENSIONS

1. THICKNESSES SHOWN FOR WALLS AND SLABS ADJACENT TO UNDISTURBED SOIL ARE MINIMUM DIMENSIONS.
2. DIMENSIONS ARE TO THE CENTERLINE OF REINFORCING BARS, UNLESS OTHERWISE SHOWN.

COVER

1. MINIMUM REINFORCEMENT COVER FOR CONCRETE IN CONTACT WITH EARTH, ROCK, AND WATER IS 3 INCHES CLEAR, UNLESS OTHERWISE SPECIFIED. THE MINIMUM COVER FOR CONCRETE EXPOSED TO AIR IS 2 INCHES CLEAR.
2. REINFORCEMENT PARALLELING CONSTRUCTION JOINTS SHALL HAVE A MINIMUM OF 3 INCHES CLEAR COVER.
3. MINIMUM CLEARANCE BETWEEN FACE OF EMBEDDED ITEMS AND NEAREST REINFORCEMENT IS 3 INCHES.

EMBEDDED ITEMS

1. ALL EMBEDDED ITEMS SHALL BE POSITIONED AND SECURELY ANCHORED OR FASTENED IN PLACE TO PROHIBIT DISPLACEMENT DURING THE PLACEMENT OF CONCRETE OR GROUT.

BAR SUPPORTS

1. BAR SUPPORTS, SPACERS, AND OTHER ACCESSORIES ARE NOT SHOWN ON THE DRAWINGS. THE RECOMMENDATIONS OF ACI 315, OR OTHER APPROVED SUPPORTING SYSTEMS MAY BE USED.

STANDARD HOOKS

1. STANDARD HOOKS SHALL BE IN ACCORDANCE WITH ACI 318.

JOINTS

1. REINFORCING BARS SHALL BE CONTINUOUS THROUGH CONSTRUCTION JOINTS.

SPLICES

1. ALL LAP SPLICES SHALL BE CONTACT LAP SPLICES. THE MINIMUM LAP LENGTH FOR SPLICING PARALLEL REINFORCING BARS SHALL BE AS SHOWN IN TABLE 1 ON THIS SHEET.
2. WHEN SPLICING REINFORCING BARS OF DIFFERENT SIZES, THE LAP LENGTH SHALL BE GOVERNED BY THE LARGER DIAMETER BAR.
3. SPLICES ARE TO BE MADE SO THE REQUIRED CLEAR DISTANCES TO THE FACE OF CONCRETE ARE MAINTAINED.

CHAMFER

1. EDGES OF PERMANENTLY EXPOSED CONCRETE SURFACES SHALL HAVE A 3/4-INCH CHAMFER.

CONCRETE NOTES (Continued)

BACKFILL

1. BACKFILL AROUND STRUCTURES SHALL BE IN ACCORDANCE WITH THE SPECIFICATIONS.
2. CONCRETE SHALL NOT BE BACKFILLED UNTIL A MINIMUM COMPRESSIVE STRENGTH OF 80% OF f_c IS ATTAINED.

PLACING

1. REINFORCEMENT MAY BE ADJUSTED IN THE FIELD TO CLEAR WATERSTOPS, KEYS, FORM TIES, ANCHOR BARS, SEATS, RECESSES, EMBEDDED METALWORK, AND CONDUITS EXCEPT IN HEAVILY REINFORCED AREAS. IN HEAVILY REINFORCED AREAS, RELOCATING THE EMBEDDED MATERIALS MUST BE APPROVED PRIOR TO ADJUSTMENT.
2. WHERE POSSIBLE, REINFORCEMENT SHALL BE PLACED TO MAINTAIN A CLEAR DISTANCE OF AT LEAST 1 INCH BETWEEN THE REINFORCEMENT AND ANCHOR BOLTS, FORM TIES, OR OTHER EMBEDDED METALWORK.
3. REINFORCEMENT PARALLEL TO ANCHOR BOLTS OR OTHER EMBEDDED METALWORK SHALL BE PLACED TO MAINTAIN A CLEAR DISTANCE OF AT LEAST 1-1/3 TIMES THE MAXIMUM SIZE OF AGGREGATE.

SPACING

1. THE FIRST AND LAST BARS IN SLABS AND BEAMS, STIRRUPS IN BEAMS, AND TIES IN COLUMNS ARE TO START AND END AT A MAXIMUM OF ONE-HALF THE ADJACENT BAR SPACING.

SYMBOLS

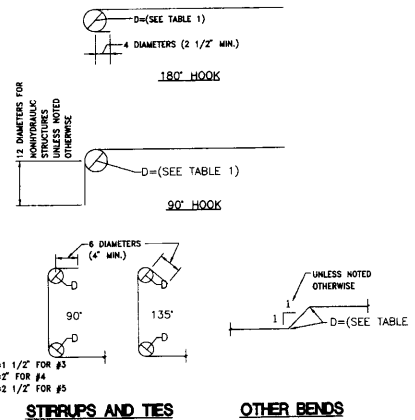
- AN OPEN CIRCLE AT THE END OF A BAR INDICATES A BEND WITH THE BAR TURNED AWAY FROM THE OBSERVER.
- A CLOSED CIRCLE AT THE END OF A BAR INDICATES A BEND WITH THE BAR TURNED TOWARDS THE OBSERVER.

STRUCTURAL STEEL AND BOLTS

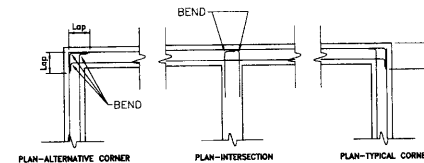
1. STRUCTURAL STEEL SHALL BE ASTM A36, FABRICATE IN ACCORDANCE WITH THE AISC MANUAL OF STEEL CONSTRUCTION.
2. BOLTS FOR CONNECTING STRUCTURAL STEEL ELEMENTS SHALL BE STEEL ASTM A325 HIGH STRENGTH BOLTS AND SHALL BE GALVANIZED.
3. EXPANSION ANCHORS FOR CONNECTING STRUCTURAL STEEL ELEMENTS TO CONCRETE ELEMENTS SHALL BE HELIX KWIK BOLT 3 EXPANSION ANCHORS OR EQUIVALENT, GALVANIZED, AND WITH A MINIMUM EMBEDMENT OF 3 1/2".

TABLE 1

BAR SIZE NO.	MINIMUM LAP LENGTH, IN	MINIMUM BEND DIAMETER, IN
4	23	3.0
5	28	3 1/2
6	34	4 1/2
7	39	5 1/2
8	45	6.0
9	68	9 1/2
10	76	10 3/4
11	85	12.0



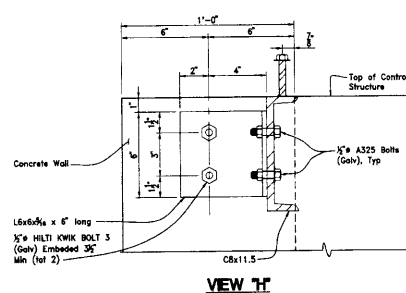
STIRRUPS AND TIES OTHER BENDS



NOTE: WHERE SINGLE CURTAIN OF REINFORCEMENT OCCURS, BEND BARS AS SHOWN FOR OUTSIDE CURTAIN.

TYPICAL REINFORCING BENDS

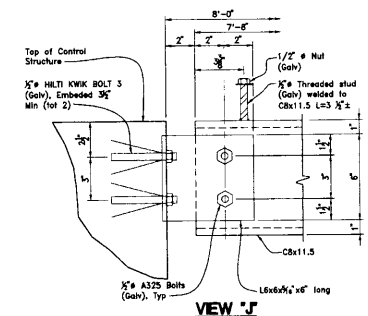
SCALE: NTS



VIEW 'H'

STEEL SUPPORT CONNECTIONS

SCALE: 3"=1'-0"



VIEW 'J'

WOOD RODGERS
ENGINEERING • SURVEYING • PLANNING • ARCHITECTURE
8501 O ST, SUITE 3000, FRESNO, CA 93720
TEL: 558-4177 FAX: 558-4177

DATE: MAY, 2008
DRAWN BY: HS
DESIGNED BY: CD
CHECKED BY: JH
APPROVED BY: [Signature]
SCALE: AS SHOWN

DATE: July 23, 2008
[Signature]
ENGINEER SIGNATURE, P.E.

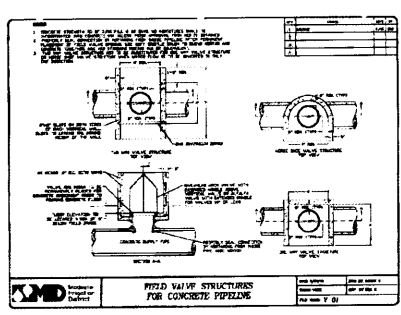
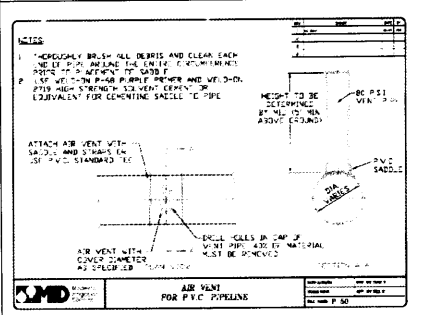
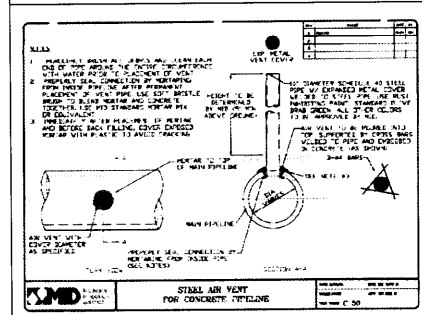
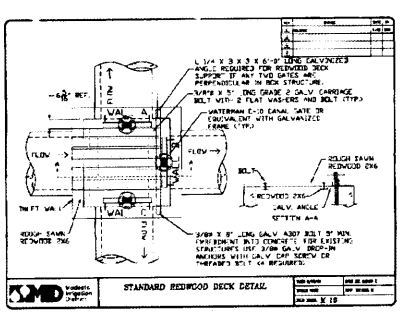
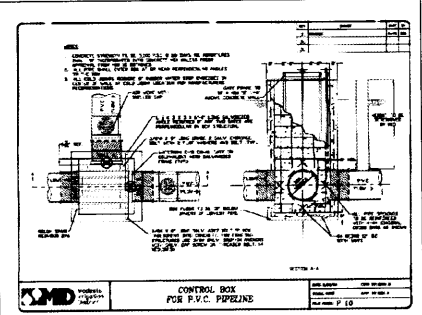
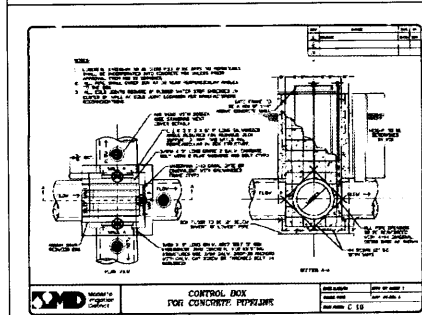
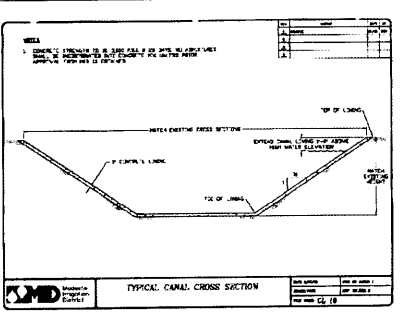
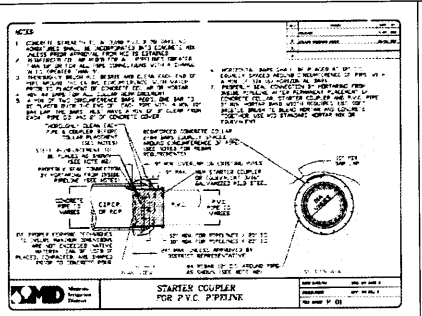
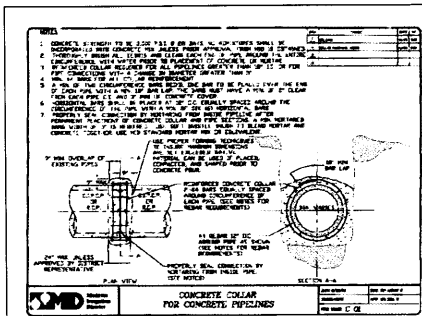


NO.	REVISION	DATE	BY

IRRIGATION IMPROVEMENT PLANS FOR
McHENRY AVENUE AT LADD ROAD
MISCELLANEOUS DETAILS 3



COUNTY OF STANISLAUS
DEPARTMENT OF PUBLIC WORKS
FILE NO.:
INVENTORY NO.:
SHEET 7 OF 10



M.I.D. DETAILS ARE SHOWN FOR REFERENCE PURPOSES ONLY. THE CONTRACTOR SHALL OBTAIN THE LATEST APPROVED DETAILS AND SPECIFICATIONS PRIOR TO CONSTRUCTION.

WOOD RODGERS
 8801 G St., Suite 100-B
 Sacramento, CA 95828
 Tel: 916.841.7790
 Fax: 916.841.7787

DATE: MAY, 2008
 DESIGNED BY: LMC
 CHECKED BY: AMH
 APPROVED BY: AMH
 SCALE: N/A



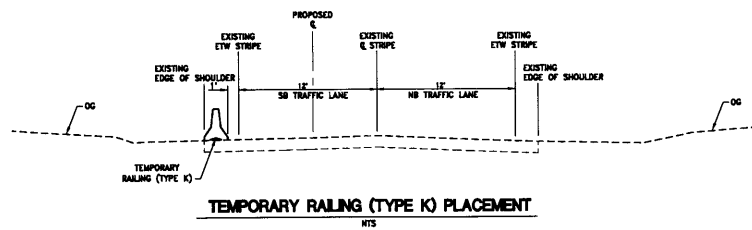
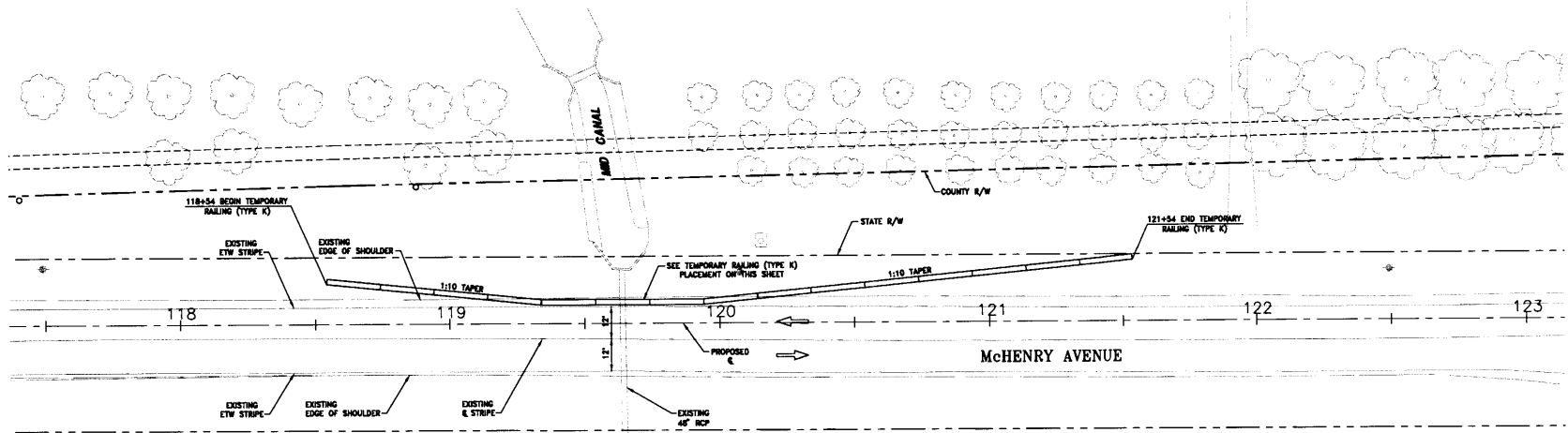
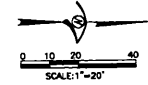
NO.	REVISION	DATE BY

IRRIGATION IMPROVEMENT PLANS FOR
**McHENRY AVENUE AT
 LADD ROAD**
MISCELLANEOUS DETAILS 4




COUNTY OF STANISLAUS
 DEPARTMENT OF PUBLIC WORKS

FILE NO.:	SHEET OF
INVENTORY NO.:	8 10



WOOD ROBBERS
 ENGINEERS - ARCHITECTS - PLANNERS - SURVEYORS
 9801 C St., Ste. 100-B
 Sacramento, CA 95829
 Tel 916.841.7790
 Fax 916.841.7792

DATE: MAY, 2008
 DRAWN BY: DG, TM
 DESIGNED BY: DRG
 CHECKED BY: DMF
 APPROVED BY:

DATE: 6-20-08

 ENGINEER SIGNATURE, P.E.



NO.	REVISION	DATE	BY

IRRIGATION IMPROVEMENT PLANS FOR
**McHENRY AVENUE AT
 LADD ROAD**
TRAFFIC HANDLING PLAN



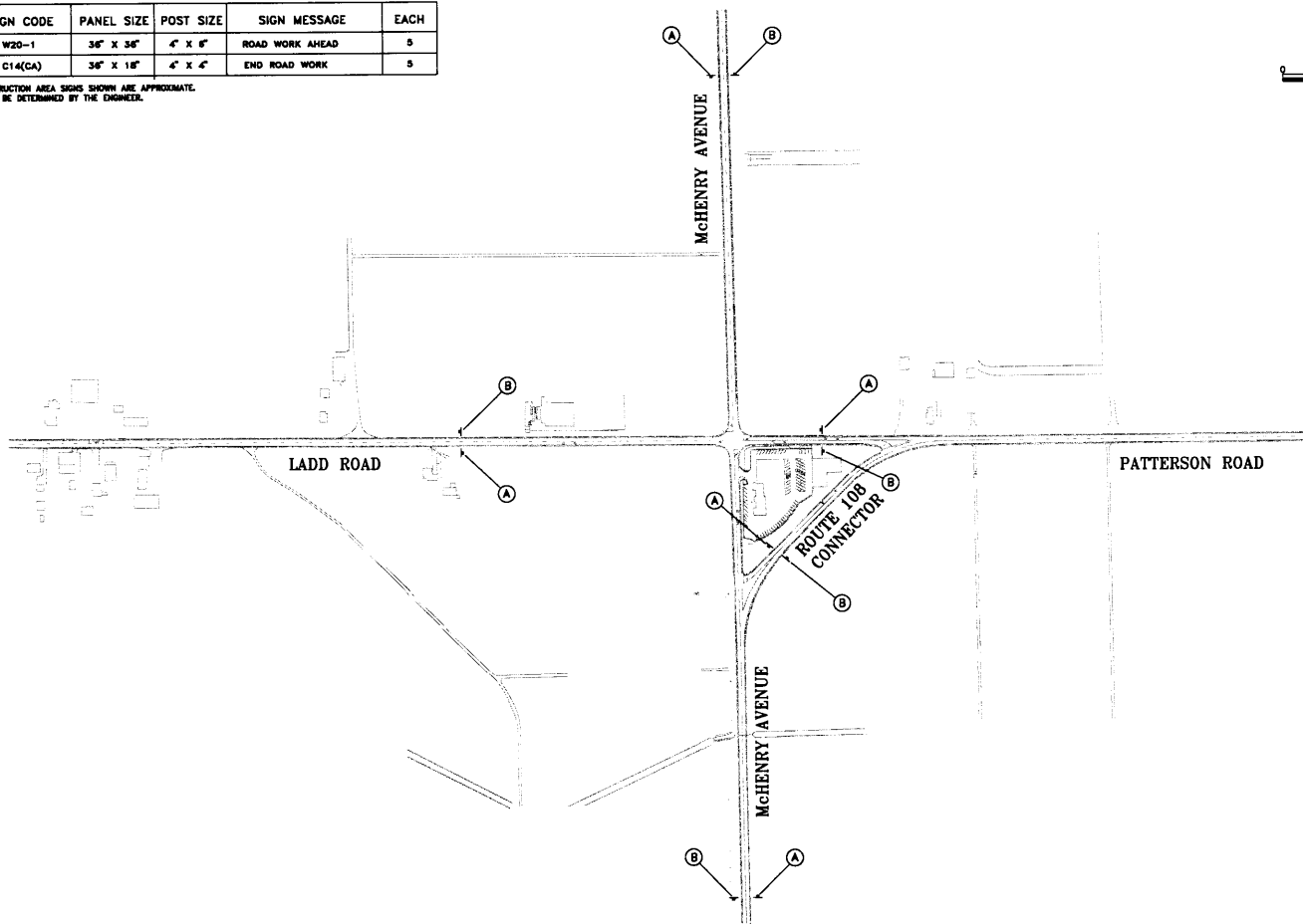
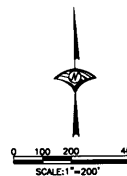
COUNTY OF STANISLAUS
 DEPARTMENT OF PUBLIC WORKS

FILE NO.:	SHEET OF
INVENTORY NO.:	9 10

CONSTRUCTION AREA SIGNS (STATIONARY MOUNTED)

TYPE	SIGN CODE	PANEL SIZE	POST SIZE	SIGN MESSAGE	EACH
(A)	W20-1	36" X 36"	4" X 6"	ROAD WORK AHEAD	5
(B)	C14(CA)	36" X 18"	4" X 4"	END ROAD WORK	5

LOCATION OF CONSTRUCTION AREA SIGNS SHOWN ARE APPROXIMATE.
EXACT LOCATION TO BE DETERMINED BY THE ENGINEER.



WOOD RODGERS
ENGINEERS - SURVEYORS - PLANNERS - ENVIRONMENTALISTS
3801 O St., Ste. 100-B
Merced, CA 95324
Tel: 916-841-7780
Fax: 916-841-7787

DATE: MAY, 2008
DRAWN BY: FM
DESIGNED BY: LMC
APPROVED BY: AHM
SCALE: NOT TO SCALE

DATE: 6-20-08
Robert J. Hultin
ENGINEER SIGNATURE, P.E.



No.	REVISION	DATE	BY

IRRIGATION IMPROVEMENT PLANS FOR
**McHENRY AVENUE AT
LADD ROAD**
CONSTRUCTION AREA SIGNS



COUNTY OF STANISLAUS
DEPARTMENT OF PUBLIC WORKS

FILE NO.:	SHEET OF
INVENTORY NO.:	10 10

C:\pwworkspace\woodrogers\Projects\Irrigation\2008\10-10-08\10-10-08.dwg 7/2/08 11:15:40 AM

**DECLARATION OF PUBLICATION
(C.C.P. S2015.5)**

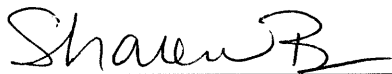
**COUNTY OF STANISLAUS
STATE OF CALIFORNIA**

I am a citizen of the United States and a resident
Of the County aforesaid; I am over the age of
Eighteen years, and not a party to or interested
In the above entitle matter. I am a printer and
Principal clerk of the publisher
of **THE MODESTO BEE**, printed in the City
of **MODESTO**, County of **STANISLAUS**,
State of California, daily, for which said
newspaper has been adjudged a newspaper of
general circulation by the Superior Court of the
County of **STANISLAUS**, State of California,
Under the date of **February 25, 1951, Action
No. 46453**; that the notice of which the annexed is
a printed copy, has been published in each issue
there of on the following dates, to wit:

AUGUST 13, 20, 27, SEPTEMBER 3, 2008

I certify (or declare) under penalty of perjury
That the foregoing is true and correct and that
This declaration was executed at
MODESTO, California on

SEPTEMBER 3, 2008



(Signature)

INVITATION TO CONTRACTORS
McHenry Avenue at Ladd Road project. Estimated
Construction cost for this project is between
\$605,200.00 and \$ 665,720.00. The work to be accom-
plished includes removing existing irrigation sys-
tem, installing 36 inch RCP pipe, constructing irri-
gation structures and other such items not
mentioned herein that are required by the plans
and specifications. Bid envelopes must be delivered
to the Clerk of the Board of Supervisors prior to 2:30
P.M., September 17, 2008. All questions must be
submitted in writing. Email your questions to bra-
dyc@stancounty.com or fax your questions to
209-525-4188, Attn: Chris Brady. Plans and specifi-
cations are available for purchase from Stockton
Blue, Modesto, CA 209-524-2924 and can be viewed at
www.stocktonblue.com under "Public Plan Room".
AUGUST 13, 20, 27, SEPTEMBER 3, 2008

2/2/08
10