



BOARD OF SUPERVISORS

Pat Paul, 1st District
Thomas W. Mayfield, 2nd District
Nick W. Blom, 3rd District
Raymond Clark Simon, 4th District
Paul W. Caruso, 5th District

1010 Tenth Street, Suite 6500, Modesto, CA 95354
Phone: 209.525.4494 Fax: 209.525.4410

**JOINT MEETING
STANISLAUS COUNTY BOARD OF SUPERVISORS
AND
OAKDALE CITY COUNCIL**

**TUESDAY, MAY 15, 2001
OAKDALE COUNCIL CHAMBER**

**SUMMARY OF COUNTYWIDE SERVICES PROVIDED TO THE
RESIDENTS OF OAKDALE BY STANISLAUS COUNTY DEPARTMENTS**



STANISLAUS COUNTY
DEPARTMENT OF AGRICULTURE
AND WEIGHTS AND MEASURES

3800 Cornucopia Way, Suite B
Modesto, CA 95358

(209)525-4730
Fax (209)525-4790

DATE: May 15, 2001
TO: Reagan Wilson, Chief Executive Officer
FROM: Donald Cripe, Agricultural Commissioner/Sealer
SUBJ: SERVICES PROVIDED BY THE AGRICULTURAL
COMMISSIONER/SEALER OF WEIGHTS & MEASURES
TO THE CITY OF OAKDALE AND AREA RESIDENTS

AGRICULTURE

Pesticide Use Enforcement:

- Regulate structural pesticide use to assure safety and answer complaints from customers.
- Work directly with the City of Oakdale, issuing them a pesticide permit and assuring compliance with training and other worker safety issues.
- Work directly with Hershey to assure safety compliance with fumigation requirements.

Pest Prevention:

- We service 117 pest detection traps in Oakdale residential areas. This is a critical link in our pest exclusion net to keep out invasions by these serious pests of yard and landscape plants. Target pests include: Glassy-Winged Sharpshooter, Oriental Fruit Fly, Mediterranean Fruit Fly, Melon Fly, Gypsy Moth and Japanese Beetle.
- We work directly with A.L. Gilbert to keep their mill free of injurious pests such as Khapra Beetle.

Nursery Program:

- We monitor firms licensed to sell nursery stock. This assures pest free, properly labeled, viable plants to customers. There are six retail nurseries in Oakdale.
- Note: Although it is in the county, Burchell Nursery is part of Oakdale life. We work with them through the production cycle to assure that their products meet applicable standards.

Fruit & Vegetable Quality Inspection:

- We inspect eggs for quality assurance at four grocery stores in Oakdale.

SERVICES PROVIDED BY THE AGRICULTURAL COMMISSIONER/SEALER OF
WEIGHTS & MEASURES TO THE CITY OF OAKDALE AND AREA RESIDENTS

Page 2

WEIGHTS & MEASURES

Devices:

- We annually inspect and test for accuracy 1,316 devices used in Oakdale to buy and sell products. These include gas pumps, all types of scales, water dispensers, etc.

Weighmaster and Petroleum Program:

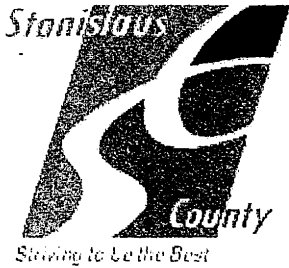
- Fifteen weighmaster locations are inspected to ensure the correctness of the certificates they issue. These certificates are issued to legally establish the weight or measure of a commodity when both parties are not present at the time the product is weighed or measured.
- Fourteen gas stations are inspected for the quality and labeling of petroleum products. Samples of gasoline are tested for octane and the presence of contaminants. Anti-freeze, brake fluid, transmission fluid and oil are tested to ensure they meet SAE and ASTM standards.

Quantity Control Program:

- Retail stores are checked for pricing accuracy. Packaged products are checked to ensure net content statements are correct and labeling meets requirements.

Other Services - Contract with San Joaquin Valley Area Pollution Control District:

- We inspect 124 gasoline vapor recovery devices in Oakdale to ensure they are installed and working properly. A properly functioning system is designed to recover 95% of the vapors dispensed during a delivery of fueling operation.

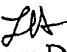


AUDITOR-CONTROLLER

Larry D. Haugh
Auditor-Controller

1010 10th Street, Suite 5100, Modesto, CA 95354
P O Box 770, Modesto, CA 95353-0770
Phone: 209.525.6398 Fax: 209.525.6487

May 14, 2001

MEMO TO: Reagan M. Wilson, Chief Executive Officer
FROM:  Larry D. Haugh, Auditor-Controller
SUBJECT: CITY OF OAKDALE SERVICES INFORMATION

The Auditor-Controller's Office provides the following services to the City of Oakdale:

- ◆ Provide assessed valuation and parcel information for fiscal planning purposes.
- ◆ Calculate property tax revenue estimates and allocate property tax revenue.
- ◆ Place direct assessments on the tax roll and apportion resulting collections.
- ◆ Distribute court fees and fines.
- ◆ Distribute documentary transfer tax apportionment.
- ◆ File Homeowners' Property Tax Relief claim and apportion resulting collections.
- ◆ Allocate Proposition 172 Public Safety funding.
- ◆ Process disbursement of local transit funding.

The City of Oakdale received checks issued by the Auditor-Controller's Office totaling \$2,155,489 in the 1999/2000 fiscal year. The majority of the funds received were a result of the services described above.

In addition, the City of Oakdale also has a redevelopment agency. The Oakdale Redevelopment Agency was one of the first in the County and was formed in the early 1980's. Tax revenues totaling \$1.3 million were passed through to the agency in 1999/2000 fiscal year.

I do plan on attending the meeting. Please let me know if you need additional information.

Thank you.

ldh:db



BEHAVIORAL HEALTH AND RECOVERY SERVICES
 A Mental Health, Alcohol and Drug Service Organization

Larry B. Poaster, Ph.D.
 Director

800 Scenic Drive, Modesto, CA 95350
 Phone: 209.525.6225 Fax: 209.525.6291

May 15, 2001

TO: Reagan M. Wilson
 Chief Executive Officer

FROM: Larry B. Poaster, Ph.D.
 Director

SUBJECT: SERVICES PROVIDED TO CITIZENS IN OAKDALE AREA

Listed below are services provided by Behavioral Health and Recovery Services for citizens of the Oakdale area. Information is for the current fiscal year to date (July 2000 through April 2001).

MENTAL HEALTH SERVICES

Service Type	Number of Clients	Amount of Service Provided
Inpatient Services	168	2,651 days in hospital
Outpatient Services	1,033	17,797 hours of service in outpatient setting
Day Treatment Services	21	1,707 days of intensive day treatment services

ALCOHOL AND DRUG SERVICES

Service Type	Number of Clients	Amount of Service Provided
Residential Services	51	1,055 days in residential treatment
Outpatient Services	164	1,334 hours of service in outpatient setting
Perinatal Services	2	20 days of perinatal services



MEMO TO: REAGAN WILSON, CHIEF EXECUTIVE OFFICER

FROM: JEFF JUE, DIRECTOR

A handwritten signature in black ink, appearing to read "Jeff Jue", is written over the word "DIRECTOR" in the "FROM:" line.

RE: DATA REQUEST

DATE: JANUARY 22, 2001

Attached is the caseload data by "cities" for our major benefit programs. It'll take a little more time to pull together the other program data.

JJ:kac

Attachments

cc: Assistant Directors
Data File

CHIEF EXECUTIVE OFFICE

2001 JAN 25 P 2:12



TANF CASES

CITY	PERSONS COUNT	CASE COUNT
CERES	1,675	659
CROWS LANDING	49	22
DENAIR	129	49
EMPIRE	200	75
GRAYSON	16	6
HICKMAN	27	11
HUGHSON	226	80
KEYES	314	108
KNIGHTS FERRY	-0-	-0-
LA GRANGE	1	1
MODESTO	8,832	5,264
NEWMAN	292	109
OAKDALE	614	272
PATTERSON	460	149
RIVERBANK	505	318
SALIDA	215	97
TURLOCK	2,623	1,002
VALLEY HOME	-0-	-0-
VERNALIS	-0-	-0-
WATERFORD	352	134
WESTLEY	46	14
TOTALS	16,576	8,370

MEDI-CAL CASES		
CITY	PERSONS COUNT	CASE COUNT
CERES	3,248	1,523
CROWS LANDING	260	93
DENAIR	412	195
EMPIRE	466	225
GRAYSON	70	23
HICKMAN	80	42
HUGHSON	758	324
KEYES	446	211
KNIGHTS FERRY	5	4
LA GRANGE	-0-	-0-
MODESTO	23,020	11,109
NEWMAN	909	398
OAKDALE	1,515	812
PATTERSON	1,608	648
RIVERBANK	1,887	794
SALIDA	706	283
TURLOCK	6,131	2,238
VALLEY HOME	9	5
VERNALIS*	39	12
WATERFORD	889	384
WESTLEY	282	95
TOTALS	42,740	19,418

*There is a very small area of Stanislaus County that has a Vernalis postal address.

FOOD STAMP ONLY CASES

CITY	PERSONS COUNT	CASE COUNT
CERES	702	261
CROWS LANDING	47	15
DENAIR	54	22
EMPIRE	85	29
GRAYSON	8	2
HICKMAN	13	6
HUGHSON	125	41
KEYES	96	31
KNIGHTS FERRY	-0-	-0-
LA GRANGE	-0-	-0-
MODESTO	4,151	1,521
NEWMAN	168	60
OAKDALE	188	79
PATTERSON	234	73
RIVERBANK	202	67
SALIDA	89	21
TURLOCK	1,058	372
VALLEY HOME	-0-	-0-
VERNALIS*	9	3
WATERFORD	148	47
WESTLEY	44	13
TOTALS	7,421	2,663

*There is a very small area of Stanislaus County that has a Vernalis postal address.



OFFICE OF THE

DISTRICT ATTORNEY

JAMES C. BRAZELTON
District Attorney

Court House 11th & I Streets

P.O. Box 442 Modesto, California 95353 Tel. (209) 525-5550 Fax (209) 525-5545

May 15, 2001

Reagan Wilson
Chief Executive Officer

Dear Reagan:

Our office has been actively involved with the citizens and community of Oakdale this past year. We have reviewed 939 cases from the Oakdale Police Department in 2000 for criminal prosecution. Our Deputy District Attorneys have provided opportunities for training for the Oakdale Police Department including domestic violence, arson, and child abuse investigation.

Within the community, Deputy District Attorney Jeff Mangar assisted in the creation of the first Youth Court program in Oakdale. This program allows for high school youth to determine the sentence of their peers in cases in which there has been a plea of guilty in the juvenile courts. Youth participate as prosecutors, defense attorneys, and jurors.


Our office presented a mock trial on drugs during Red Ribbon week in October to the 4th - 6th grade students at Alpha Omega Christian School (25 students), Fair Oaks School (180 students) and Magnolia School (160 students). The defendant was an inmate in the Stanislaus County Jail. After the mock trial, she told the students how drugs put her in jail, what events in life she has missed being in jail (birthdays, Christmas, the birth of a sibling, etc.), and, of course, why they should not use drugs.

We are always willing to educate the public regarding the function and aspects of our office. If there are other opportunities for us to be involved in the Oakdale Community, please let us know.

Sincerely,

James C. Brazelton
District Attorney



Date: May 15, 2001
To: Reagan Wilson, Chief Executive Officer
From: Terry D. Plett, Director 
Subject: City of Oakdale Services

Reagan, here is information regarding the services that the Department of Employment and Training provided residents of the City of Oakdale at our three Resource Centers.

Total number of people served at our Centers from 7-1-00 to 5-11-01: 10,303

Total number of people served from Oakdale at our Centers from 7-1-00 to 5-11-01: 315

City of Oakdale's population is 3.47% of the County's total population. Of the total population we served Countywide (10,303), 3.06% (315) were from Oakdale.

In April 2001, Stanislaus County had 204,600 people in the workforce.
In April 2001, Oakdale had 6,560 or 3.20% of the County's workforce.
In April 2001 Stanislaus County UIB rate was 11.00%
In April 2001 Oakdale UIB rate was 11.4%

Oakdale Customer Satisfaction Surveys from 07/01/2000 through 05/11/2001:

Site	Total	Question #1	Question #2	Question #3
Community Services	68	9.51	9.53	9.5
Job Club Center	69	9.49	9.46	9.48
Modesto EDD	169	7.91	7.28	7.03
Average Score all sites:	306	8.62	8.27	8.13

- Question #1 How satisfied are you with the service of the Stanislaus Career Network Resource Center?
- Question #2 To what extent have the services met your expectations?
- Question #3 For someone in your particular situation, how well do these services compare with the ideal service?

All questions are rated 1 through 10. 1 rating is low, 10 rating is high.

We currently don't count people who visit the Oakdale EDD office. As a lead partner we should be. I'll speak with Carletta Steele about how to do that in the future. If we did count the EDD Oakdale visits, we would have seen a marked increase in the total number of people from Oakdale who were served.



CHIEF EXECUTIVE OFFICER
3800 Cornucopia Way, Suite C, Modesto, CA 95358-9492
Phone: 209.525.6770 Fax: 209.525.6773

2001 MAY 15 P 12:47

May 15, 2001

TO: Reagan M. Wilson
CEO

FROM: Kevin M. Williams *KMW*
Director

RE: Agency Services and Outreach – Oakdale and Vicinity

The following information is an "at a glance" of Environmental Resources/Parks & Recreation Department services and outreach to the Oakdale community and vicinity.

Code Enforcement – Toll Free: 1-877-2Assist = 1-877-227-7478

30 calls from the Oakdale & Vicinity to date: (8) Housing, (5) Refuse, (4) Vehicle, (3) Junkyards, (7) Zoning, (3) Nuisance. Of 693 total calls received, 4.5% of the calls were from Oakdale.

Code Enforcement Functions:

Intake General complaints re: Housing Code Violations
Lead agency for investigation and enforcement of refuse code violations within the City.
Issues concerning garbage, trash and rubbish accumulations may be reported to Code Enforcement for resolution.

Other aspects of Code Enforcement:

- Provide informational materials to tenants and residents regarding getting needed repairs addressed and completed.
- Some inspection services are available through the Code Enforcement Unit, and referral to the City Building Department in the event the repairs require the issuance of a building permit to complete.
- Public and attractive nuisances may be handled within the City by Code Enforcement Unit.

Environmental Health

Inspections:

Food Facilities – 93 *
Public Pools – 16 *
Aerobic Waste Water Treatment Plant**
Septic Inspections**
Non-community Water Systems**
Wells (residential & commercial) & Annular Seal Inspections**

*The Environmental Health Division provides inspection of these facilities a minimum twice per year. Additional inspections are performed as follow-up on complaint calls.

** Mandates may require onsite/conditional inspection of lesser/greater frequency.

Haz – Mat Programs & Issues

Hazardous Waste Generators	85	Regulated Businesses (cleaners, garages, etc.)
Disclosure	196	“
Underground Storage Tanks	15	“
Medical Waste	08	“
Site Mitigation	12	“
Emergency Response Calls	18	(Diesel spills, Gas leaks, illegal drug labs, etc.)
Household Waste Events	04	
Tiered Permit	01	Regulated Business
Hazardous Materials Complaints	07	

Solid Waste

Household Bulky Item Disposal – Oakdale Drop Off Site, 551 S. Center Street: 9-4 Friday / 10-5 Saturday – No Fee. Callers may contact Solid Waste staff @ (209) 525-6700 M-F during regular business hours.

Statistics for the Year 2000:

Site operated 42 Weekends
Ton Collected: 660
Number of Drop Boxes used: 266
Number of Customer loads: 3,280
Of Total users: Customers with Oakdale Addresses: 76%

PARKS & RECREATION DEPARTMENT:

The Parks and Recreation Department provide landscaping services for two departments that offer services in Oakdale. The Library uses our landscaping services for the Oakdale Library and the Behavioral Health and Recovery Services Department uses our landscaping services for the Oakdale Counseling Center. We subcontract to these departments; we have no direct services that we provide the City of Oakdale.

Currently, plans are underway to acquire approximately 16 acres of pastureland East of Oakdale to be developed as a neighborhood park.

Oakdale

community health profile

and services provided by the Stanislaus County Health Services Agency

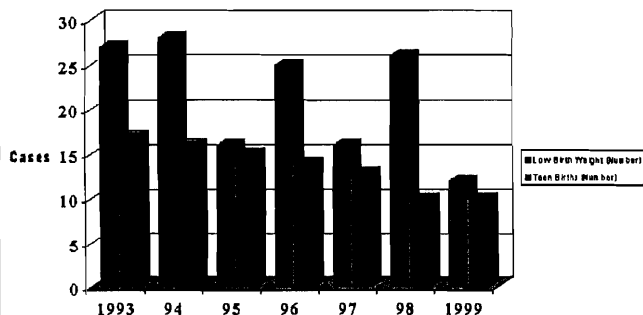
Partnerships

HSA is represented on the Oak Valley Family Support Network. Oakdale has representatives on the County Breastfeeding Coalition, the Low-birthweight Prevention Committee and the Tobacco Coalition. The HSA Women, Infants and Childrens clinic (WIC) is located at Oak Valley Community Hospital.

Teen Pregnancy/Low birth weight

Oakdale experienced a significant decrease in low birth weight deliveries between 1998 and 1999. Teen births as a percentage of total births for Oakdale residents, continues to decline as well.

Teen Births/Low Birth Rate



Oakdale is currently better than the Healthy People 2010 objective for low birth weight babies. The standard is 5%. Oakdale results for 1999 were at 3.5%.

health activities

Flu Immunizations

During the influenza campaign of fall 2000, 292 vaccinations were given at the Oakdale clinic. Public Health provides immunizations at the Oakdale WIC.

Pneumonia Immunizations

39 immunizations were provided to Oakdale residents during the fall of 2000. Public Health IZ. unit supplies Vaccine for Children to Oakdale Medical Office. They staffed 10 immunization clinics at the Oakdale WIC site providing 207 immunizations for 170 clients.

Blood Lead Poisoning

The number of BLL's (blood lead levels) entered from 1/1/94-1/9/01 in Oakdale were 151. There were 7 blood levels greater than 10 (which are referred to a physician for follow up).

Health Fairs

- HSA staff participated in the Family Fun and Health Day sponsored by Oak Valley Family Support Network.
- HSA staff participated in the Oakdale Women's Health Fair sponsored by Oak Valley Community Hospital.

Nutrition

The Nutrition Network plans to provide parent education sessions on nutrition and physical fitness to Head Start parents in the Oakdale area in the year 2001.

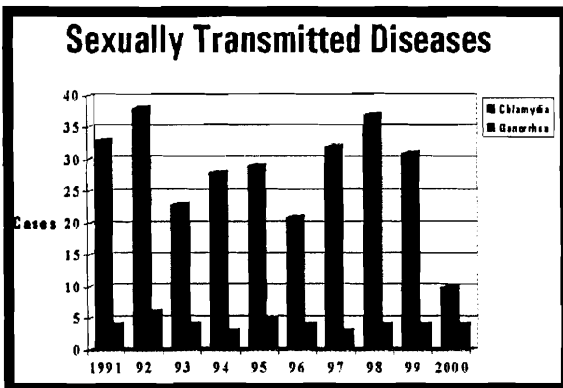
Community

HEALTH Indicators

	1991	1992	1993	1994	1995	1996	1997	1998	1999	2000	1998-2000	1998-2000	Year 2000	Year 2010
											Average County Rate	Average Oakdale Rate	Healthy People Objective	Healthy People Objective
Hepatitis														
Hepatitis A	4	20	31	5	0	2	1	1	0	0	14.7	2.3	23.0	4.5
Acute Hepatitis B	4	0	0	1	0	0	0	0	0	0	3.43	0.0	40.0	
Chronic Hepatitis B	2	6	2	3	4	1	0	0	2	1	13.66	6.8		
Acute Hep C	0	0	0	0	0	0	0	0	1	2	7.31	6.8		
Chronic Hep C	0	0	0	0	9	15	19	16	17	14	127.47	105.9		
Enteric Pathogens														
Campylobacter	5	12	14	11	5	7	5	4	8	8	33.73	45.0		12.3
<i>E. coli</i>	0	0	0	0	1	0	4	0	1	1	1.57	4.5		1.0
Giardia	4	7	0	2	1	0	0	1	2	0	6.94	6.8		
Salmonella	2	3	4	7	4	2	5	4	3	3	14.70	22.5		6.8
Shigella	2	3	1	1	3	1	3	0	0	1	6.42	2.3		
Sexually Transmitted														
Chlamydia	33	38	23	28	29	21	32	37	31	10	227.3	175.7	170.0	N/A
Gonorrhea	4	6	4	3	5	4	3	4	4	4	44.9	27.0	100.0	19.0
Vaccine Preventable														
Pertussis	0	0	0	1	0	0	0	6	4	0	4.78	22.5	N/A	
Environmental														
Elevated Blood Level				4	2	0	0	0	1	0				
Other Infectious Disease														
Tuberculosis	1	0	1	0	0	2	2	0	0	0	4.93	0.0	3.5	1.0

Sexually Transmitted Disease

Oakdale reflects the national, state and regional battle with Chlamydia. 1999 showed a significant decrease of the diagnosis of this disease in Oakdale residents. Chlamydia has now become the most widely transmitted STD in the United States.



WIC Program

Serving an average of 450 participants every month:

- 50% Hispanics
- 47% White
- 1.5% Asian
- 1% African American
- .5% Native American

Of the 450 participants, self reported data:

- 17% receiving TANF
- 19% receiving Food Stamps
- 53% receiving MediCal
- 450 packets of food vouchers bring in a monthly income of about \$22,500 to local grocery stores, amounting to an annual income of \$270,000 for vendors in the Oakdale area.

• In addition, WIC participants bring in extra income for grocers when they are there to redeem WIC food vouchers.

Tobacco

- In 1999, HSA conducted a youth tobacco survey.
- From the 17 stores surveyed, 1 (6%) store was willing to sell to an underage youth.
- The 2000 survey resulted in 18 stores surveyed, and 2 (11%) of the stores were willing to sell.





LIBRARY
STANISLAUS COUNTY
1500 I Street Modesto, CA 95354
Phone: 209.525-7800 Fax: 209.529-4779

May 15, 2001

TO: Reagan M. Wilson
Chief Executive Officer

FROM: Denise Peterson
County Librarian

SUBJECT: OAKDALE LIBRARY HIGHLIGHTS

The year 2001 marks the 25th anniversary of the David F. Bush Library. Below are some highlights and statistics for the Library for July 2000 – May 2001:

- August 2000 saw the annual Summer Reading Club end with the highest ever participation—637 children joining the club
- September 2000 saw the arrival of four new computers, made possible through a grant by the Bill and Melinda Gates Foundation. Public use of the internet/word processing computers has increased by 44%
- October 2000: the Oakdale City Council honored the participants in the Library's Summer Reading Club.
- November 2000: Three staff members from the library attend the California Library Association's Annual meeting in Santa Clara. Librarian Diane Bartlett coordinated all the programming for the Children's and Young Adult Services section at this conference.
- December 2000: Internet training class provided for the community by Bridget Beck, VISTA volunteer.
- January-March 2001: With the adult lecture series, the library was able to co-sponsor programs with the Stanislaus Genealogical Society and the local chapter of the American Association of University Women.
- February 2001: The local chapter of the Lions held their annual Run for the Library. Over 200 participants made this the largest Run ever. The library has asked that the proceeds go to fund a new microfilm reader/printer. Presently under consideration.
- March 2001: The Library is painted inside and out. The library has a booth at the annual Ag Luncheon.
- April 2001: The library celebrates National Library Week with giveaways (pencils and bookmarks), daily crafts for children, and a Teen Poetry Read-in
- May 2001: The library co-sponsors a program with the Family Support Network on how to Use Television as a Learning Tool.

Very Popular:

- Weekly Storytimes
- Craft classes for school-age children
- Programs with outside vendors, such as the Lariat Larry, Storytelling Cowboy program.

Looking Ahead:

- Possible partnerships with the Cowboy Museum to co-sponsor program.
- Will have a booth at the family Fun Day, organized by the Family support Network.
- Volunteer Reception on May 30, for Oakdale library volunteers, Friends of the Library, Read/Succeed volunteers, Home Delivery volunteers.

Services to the Community:

The Oakdale Library provides material to meet the informational and recreational reading needs of the community. These resources are not limited to books and periodicals, but include public Internet access, word processing programs, informational CD-ROM's, Videos, AudioTapes and staff who are trained to help both adults and children find what they are looking for. Staff is also available to speak with community groups regarding services to the community. The library provides programming for adult, teen and youth audiences. These programs include lectures, workshops, storytimes, craft programs and programs featuring professional performers. The library also offers a community room for public meetings.

Statistically speaking:

- As of March 2001 the total circulation for the fiscal year was 99,940 items, an increase of 3.7% over March 2000.
- For 1999/2000 circulation of children's material comprised 48% of the total circulation while circulation of adult materials was 52% of the total circulation.
- Attendance at children's programs has been averaging 30 people per program.
- Attendance at programs for teens has been averaging 12 teen per program.
- Attendance at programs for adults has been averaging 15 people per program.



Stanislaus County

DEPARTMENT OF MANAGEMENT INFORMATION SERVICES

948 11th Street, Ste. 30
Modesto, California 95354
Phone (209) 558-4477
Fax (209) 558-4483

May 15, 2001

TO: Reagan M. Wilson

FROM: James Ray
Interim Director

SUBJECT: Services Provided by M.I.S. to the Oakdale Community

The MIS department provides the following to the Oakdale Community:

We support seven (7) accounts to access criminal justice applications on the County's mainframe. We also provide PC/Terminal support to the attached workstations as requested.

We have provided and support twenty-one (21) Nextel cellular phones to the Oakdale Fire Department, and the Public Works Department.

We support data and voice lines from the County 911 to Oakdale 911 operation located at the Oakdale Police Department.

We provide cellular phones for emergencies as requested by the Emergency Operations Manager.

We have installed and provide support for telephones to the Health Services Agency and Behavioral Health clinics, as well as to the Oakdale Library.



STANISLAUS COUNTY PROBATION DEPARTMENT

2215 Blue Gum Avenue • Modesto, CA 95358-1097

Phone (209) 525-5400 • Fax (209) 525-4588



Linda L. Duffy
Chief Probation Officer

May 11, 2001

Reagan M. Wilson
Chief Executive Officer

Dear Reagan,

Re: PROBATION SERVICES IN OAKDALE

Your office asked us to provide statistics and information on services offered in Oakdale by noon, May 14. This correspondence is in response to that request.

General Information

The Probation Department is a correctional agency that works with adults and juveniles throughout the County who have violated state law and have been referred to the Probation Department by the Courts or law enforcement. The Department operates Juvenile Hall, a secure detention facility for juvenile offenders arrested by law enforcement and referred to Probation for further intervention. The Department also offers juveniles under its supervision alternatives to custody such as the Work Program, Home Supervision and Electronic Monitoring. Any county juvenile ward of the court who meets certain criteria may be a participant in Juvenile Drug Court. It also provides services to the Superior Court by preparing investigation reports and sentencing recommendations in both Adult and Juvenile Court. If an individual is placed on probation by the judge, the Probation Department supervises the person and monitors and enforces court orders. Probation Officers are sworn peace officers who frequently work in partnership with law enforcement agencies to deter crime and arrest law violators. Probation also engages in prevention work with at-risk youth and families who may not be on formal probation status with the Court.

Oakdale Information


Adult Felony Offenders in Oakdale

There are 134 adult felony probationers in the City of Oakdale. 109 are males and 25 are females. They have been placed on probation by the Superior Court for a period of 3 to 5 years. Due to staffing shortages, only 38 of these individuals are seen monthly by a supervising probation officer. The most common offense is possession of methamphetamine. Eight are on probation for drunk driving, eight for burglary, seven for statutory rape, six for domestic violence and five for possession of methamphetamine for sale. 33 misdemeanor probationers from Oakdale have been cited to Domestic Violence Court since its inception on July 1, 2000. The probation officer assigned to the Stanislaus County Drug Enforcement Agency (SDEA) has participated in the investigation of two methamphetamine labs and four methamphetamine lab dumps within the Oakdale city limits since January 1 of this year. Seven Oakdale residents are receiving intensive probation monitoring and treatment through the Adult Drug Court Program. One Oakdale resident is participating in the Mentally Ill Offender Program.

Juvenile Wards of the Court in Oakdale

There are 22 juvenile wards of the court residing in Oakdale. All are males. The most common offenses for these youth are assault or battery and theft.

Sincerely,



Linda L. Duffy
Chief Probation Officer



DEPARTMENT OF PUBLIC WORKS

George Stillman
Director

1010 10th St, Suite 3500, Modesto, CA 95354
Phone: 209.525.6550

May 15, 2001

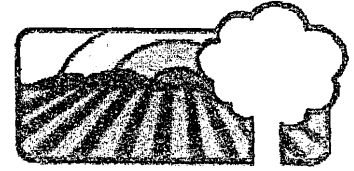
TO: Reagan Wilson, CEO

FROM: George Stillman, Public Works Director

SUBJECT: Road Maintenance Activity – Oakdale Area

In response to your request regarding road maintenance activity in the Oakdale general area:

- In the eastern area of the County the Road Maintenance staff has recently completed grading all non-paved roads, representing approximately 35 miles.
- Staff is currently repairing soft spots on a six mile section of Sonora Road and a three mile section of Twenty-Eight Mile Road.
- Within the next 90 days, crews will be painting approximately 230 miles of center lines and edge lines in the eastern area.



City of Modesto

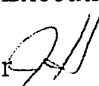
STANISLAUS REGIONAL 9-1-1

JEANNE HARDIN, Director
3705 Oakdale Road
Modesto, CA 95357

Telephone (209) 552-3900

Fax (209) 552-3950

May 15, 2001

MEMO TO: Reagan Wilson, Chief Executive Officer
FROM: Jeanne Hardin, Director 
SUBJECT: Dispatch Service for Oakdale City Fire

In the last JPA meeting, I was directed by the Commission to execute a contract with the City of Oakdale for fire dispatch service. This direction was a result of a formal request from the Oakdale City Fire Chief to take over dispatch services for their fire agency.

Due to the move of our present dispatch center to our new site at 3705 Oakdale Road, it was felt by the City of Oakdale as well as dispatch staff to hold off dispatch services until the completion of the move. This would save costs with respect to connectivity for the City of Oakdale, since connectivity would only occur once. This would also allow dispatchers time to become accustomed to new equipment, moving into new technology using PC work stations as compared to our old system.

Now that the move is behind us, we are ready to move forward in our goal to dispatch fire for the City of Oakdale. Dispatch staff attended training with the City of Oakdale yesterday and another squad is scheduled for later in the week to learn policy and procedures as well as city boundaries and engine identifiers.

We are tentatively scheduled to begin full fire dispatch for the City of Oakdale beginning 7:00 a.m. June 4, 2001. This will add approximately 1000 calls annually to our call volume.

This would enhance efficiency and streamline responses between Oakdale City Fire and Oakdale Rural Fire. Historically, when Oakdale Rural responded to any major fire where mutual aid was necessary from Oakdale City, Stanislaus Regional 9-1-1 dispatch staff would have to telephone dispatchers at Oakdale City Fire, requesting they dispatch additional engines for assistance. The same was true for a large structure fire, or any major fire within the City of Oakdale, where Oakdale City dispatchers would have to make a telephone call to Stanislaus Regional 9-1-1 dispatch and request mutual aid

assistance. By handling all calls for Oakdale, both city and county areas, dispatch for both will take place “under one roof” and eliminate delays, thus enhancing efficiency and effectiveness for fire dispatch for both Oakdale Rural and Oakdale City Fire agencies.

There are many times when automatic aid dispatch is also mutually agreed upon between Oakdale City and Oakdale Rural. This will also result in a faster response and better coordination between field units, since all fire dispatches will be dispatched out of one center. This also eliminates the need to take the time to landline the requests for response. The protocol for dispatch will be handled in the same manner as we presently utilize for the City of Ceres Fire Department.

We are anxious to begin this partnership and look forward to providing the City of Oakdale with the best service possible.



CHIEF EXECUTIVE OFFICE

Reagan M. Wilson
Chief Executive Officer

1010 10TH Street, Suite 6800, Modesto, CA 95354
PO Box 3404, Modesto, CA 95353-3404

Patricia Hill Thomas
Assistant Executive Officer

Phone: 209.525.6333 Fax: 209.544.6226

May 14, 2001

TO: Reagan Wilson
Chief Executive Officer

FROM: Bob Allaire *Bob*
Senior Management Consultant

SUBJECT: Renaissance 2000 Project & Oakdale

The following recommendations were made by the residents and representatives of Oakdale during the Renaissance 2000 Project:

- Expand Child Abuse Prevention Services through the Parent Resource Center.
- Expand the Oakdale Library to 10,000 square feet or so.
- Expand child care to make it more accessible to more parents and in more locations.
- Expand employment opportunities for youth both during the summer and year around.
- Expand public transportation (hours/days & weekends) locally and to Modesto.
- Expand California Healthy Families Insurance to more children.
- Develop a shelter for abused neglected and at-risk children and mothers in partnership with the Children's Crisis Center.
- Develop an adult care facility to provide both full-time and respite care for mentally and/or physically disabled adults.
- Develop afterschool, evening and weekend activities for adolescents
- Develop a vocational school and/or expand career options through the existing high school programs.

- Partner with the County to expand recreational facilities, i.e, parks.
- Partner with the County, public agencies, City and community based organizations to expand the current and/ or develop a new Community Center

Children and Families First Commission (Prop 10)

1. Within the next 60 days the Commission will:
 - A. Execute an agreement with the United Way of Stanislaus County to make at least \$250,000 available, through a community request process, "small grants" (from \$2,500-\$25,000) and "mini-grants" (from \$250- \$2,500).
 - B. Execute an agreement with the United Way of Stanislaus County to make at least \$250,000, through a Request For Proposal process, for designated "pilot" or "experimental" programs, i.e. stop smoking efforts, pregnancy prevention, ADD exposed infants, health insurance enrollment, temporary housing, etc.
 - C. Execute an agreement with the Stanislaus Child Care Planning Council to coordinate child care planning efforts and funding priorities.
2. Within the next 90 days the Commission will first solicit providers through a "Letter of Intent" process and negotiate "Master Contracts" for:
 - A. Comprehensive early child care programs with an emphasis on school readiness with two or more contractors for approximately \$5,000,000.
 - B. Comprehensive specialized child care programs to meet the needs of children with special problems for approximately \$400,000.

Oakdale residents can have input and/or participate as follows:

- Supervisor Paul is a member of the Stanislaus County Children and Families First Commission
- Mickey Peabody is a member of the Board of the United Way of Stanislaus County. There is an Oakdale/Eastside Advisory Committee.

- Several residents are actively involved with one of the five Impact Councils of the United Way, i.e., Strengthening Families, Health and Well-Being, Children & Youth, Safety Net and Building Strong Communities.
- Several residents are members of the Stanislaus Child Care Planning Council, more could apply through the Clerk of the Board.

Welfare Reform Fiscal Incentive Funds

1. On March 13, 2001 the Board authorized the Community Services Agency to expand its After School Learning Program to include services to families who are not eligible for TANF. This should expand the eligibility for students and families at Cloverland Elementary School.
2. On May 8, 2001 the Board authorized the Community Services Agency to expand its Family Decision meetings and to initiate a Family-to-Family Incentive. This is a model of foster care services that emphasizes local community support to families and children at risk of placement or whose children were recently placed.
3. On May 8, 2001 the Board authorized the Community Services Agency to have an agreement with the Department of Employment and Training to continue the Summer Youth Employment Program and to target the following youth: a) 17-21 year olds in the Independent Living Skills Program; b) 14-18 year olds in Foster Care; and c) 18-21 year olds participating in an Aftercare Program.
4. The Community Services Agency is preparing recommendations for the Board to address: a) the utilization of GIS to determine community needs; b) Other youth projects through local youth partnerships, c) to support additional neighborhood and community services and d) to expand Kinship services.

Tobacco Tax Settlement Funds

The following were identified through our recent process:

1. Partnering with the school district and city in the development of one, or more, Technology Learning Centers.
2. Some of the expansion of public transportation.
3. One of three communities in need of a Large Community Center.

4. The development of East Oakdale Park.
5. The development of a Valley Home Community Center.

I hope this is of assistance to you. Please let me know whether you need additional assistance.



SHERIFF'S DEPARTMENT
Les Weidman, Sheriff - Coroner

Richard Breshears, Assistant Sheriff
Zane Clark, Assistant Sheriff

**ADMINISTRATION
DIVISION**

May 15, 2001

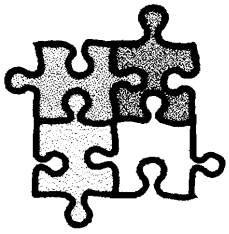
TO: Reagan Wilson, CEO
FROM: Les Weidman, Sheriff
RE: City of Oakdale Statistics/Information

The Sheriff's Office provides Jail, Coroner, Public Administration, criminal records, automated fingerprints and photos, special investigations, aerial support both fixed wing and helicopter, SWAT and Hostage Rescue, etc. to all local departments; especially, the smaller departments like Oakdale without charge.

The Stanislaus County Management Information Services Department (M.I.S.) provided the following statistics as of May 9, 2001, at 11:00 a.m. The total number of custodial parties who were booked, were in custody, and had an address of Oakdale, CA were:

Public Safety Center	=	15
County Jail	=	14
Honor Farm	=	16
Work Release	=	12
Home Detention	=	1
Total:		58





Oak Valley Hospital District

Family Support Network

Our Mission: To link resources, information and support to promote healthy and nurturing environments for children and families

Spring 2001

Dear Community Members,

Thank you for the opportunity to tell you about the expansion plans for the Family Support Network and the development of a new Family Resource Center in Oakdale. Our mission is to link resources, information and support to promote healthy and nurturing environments for the families of our community. The Family Support Network is a non-profit, grant funded collaborative of local representatives from healthcare, schools, churches, parents, libraries, city and county officials, businesses, service clubs and social service agencies.

The Family Support Network has successfully contributed to improving conditions for families in eastern Stanislaus County over the last eight years. Part of the FSN's role has been to help other community building efforts succeed, most recently the Children's Guardian Fund, through which over \$500,000 was raised in less than two years. The funds raised purchased a home in Oakdale to provide emergency shelter for abused children. Because of the partnership with the FSN, 100% of the proceeds donated went directly toward the purchase of the home. All costs, including supplies, postage, stationary and hundreds of hours of labor were supplied by the FSN.

The Family Support Network has long outgrown its one person office space provided by Oak Valley Hospital, and the creation of a comprehensive Family Resource Center requires new space and additional staff that will enable us to provide more outreach, support services, and educational programs to meet our community's needs. The space we have in mind is a 2700 square foot building site located on the corner of F Street and Oak Avenue. This location is visible, accessible and has ample parking. The Family Resource Center could provide a satellite location for county services, offering a workstation, file storage and office space. Additionally, county services would be supported by on site clerical staff for the use of copy machine, fax machine and computers.

We welcome representatives from other agencies to partner with the Family Support Network to provide services to the children and families of our communities. Working together we will be more effective in our outreach efforts to address the needs of these families. Thank you for the opportunity to tell you about our dreams of a Family Resource Center in Oakdale. We look forward to your response.

Sincerely yours,

Karen O'Bannon, Director
Family Support Network

Family Support Network ~ 350 South Oak Avenue ~ Oakdale, CA 95361
(209) 848-5306 Fax: (209) 847-2781 email: kobannon@ovhd.com

Family Support Network

Programs and Services – Spring 2001

Parent Support Groups

- Familias Unidas
- Moms 'N Tots
- SNAP (Special Needs Advocacy for Parents)
- Sierra Vista Children's Center

Community Outreach

- Shaken Baby Syndrome Prevention
- HealthRap Presentations
- Oakdale City Fire Safety Program
- Healthy Families Insurance Application assistance
- Family Fun Day and Health Fair
- American Red Cross – local Disaster Action Team (D.A.T.)
- Children's Guardian Home

Education and Awareness

- Learn to Read Program
- Library Expansion – Parenting Resources
- Newsletter
- OASIS (Oakdale After School Instruction and Sports)

The Family Support Network provides continuing education to staff members, participates in Career Day at OHS, the annual Rodeo Parade, youth sports teams and the Spirit of Oakdale Thanksgiving Day Dinner. Working together to make a difference in the community...
it's what we do best!

Family Support Network
Oak Valley Hospital
350 S. Oak Ave., Oakdale, CA 95361
(209) 848-5306



MAGNOLIA ELEMENTARY SCHOOL
YEAR ROUND EDUCATION

739 Magnolia Street
Oakdale, CA 95361
Phone (209) 847-3056
Fax (209) 848-0815

Pam Antinetti, Principal

Donna Hollander, Vice Principal

April 6, 2001

Oak Valley Family Support Network
c/o 350 S. Oak Avenue
Oakdale, CA 95361

Dear Sponsor,

I want to take this opportunity to thank-you for sponsoring the REACH Program at Magnolia Elementary School. It was very well organized, delivered an important message, and involved positive role models for our students.

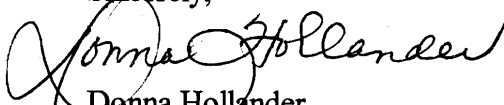
Christie Camarillo, Executive Director of Oakdale's Cowboy Museum, did an excellent job coordinating the REACH Program for our school. I appreciated being kept informed as to times, dates, and sponsors. The video Christie gave to Magnolia to preview was excellent and provided the information necessary to form a clear picture of the content and quality of the REACH Program.

"Choose Your Own Path" is a message that our students need to hear often and it came across loud and clear in the REACH presentation. Students now understand that you need to be focused, and dedicated to be successful in rodeo and in life. The REACH presentation also made students aware of the history of rodeo and its relationship to Oakdale.

The REACH representative, Janet Lemmons, is an excellent presenter. She relates well to elementary school students. Her confidence and calm manner encourages student participation. Professional cowboys Trav Cadwell, and Luke Branquinho did a wonderful job explaining how they became inspired to be cowboys and why they choose their specialized event. Jody Mendenhall did a great job telling the students how she was selected to be Oakdale's Rodeo Queen. Also, to have a well known Oakdale Rodeo personality such as Russ Santos in attendance was a special touch to add to the quality of the assembly.

Again thank-you for sponsoring a wonderful assembly for Magnolia Elementary School students.

Sincerely,


Donna Hollander

Oakdale Leader

Have a Child With Special Needs?

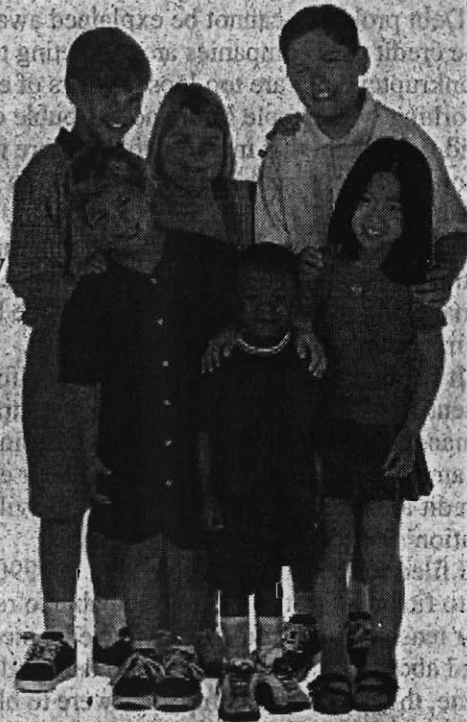
Join S.N.A.P., a discussion group for parents raising children with special needs. Monthly meetings are held on the third Wednesday of each month in the Oak Valley Hospital Board Room, from 10am-11:30am.

Next meeting: April 18, 2001

Come meet other families raising children with special needs, talk with people experiencing similar issues, and learn about local resources. There's no cost to attend, and coffee and muffins will be provided. (We regret at this time that child care is not provided)

Organized by S.N.A.P.— Special Needs Advocacy for Parents
Sponsored by the Family Support Network

**For more information, please call
Sally at 402-9840 or Karen at 848-5306**



April 11, 2001

Workshop shows TV, literacy can go hand-in-hand

In thousands of households across the nation, the television has become a live-in nanny. Need to wade through a stack of bills without interruption? Have an important phone call to make? Need just 30 minutes of child-free peace and quiet?

Then it's likely you'll turn on the TV.

Most parents plead guilty to over-using the television as a way to keep their kids occupied. And study after study shows that too much TV is not at all good for growing minds.

Still, officials at the Oak Valley District Hospital's Family Support Network and KVIE Channel 6, the region's Public Broadcasting Service, believe TV can be a valuable learning tool.

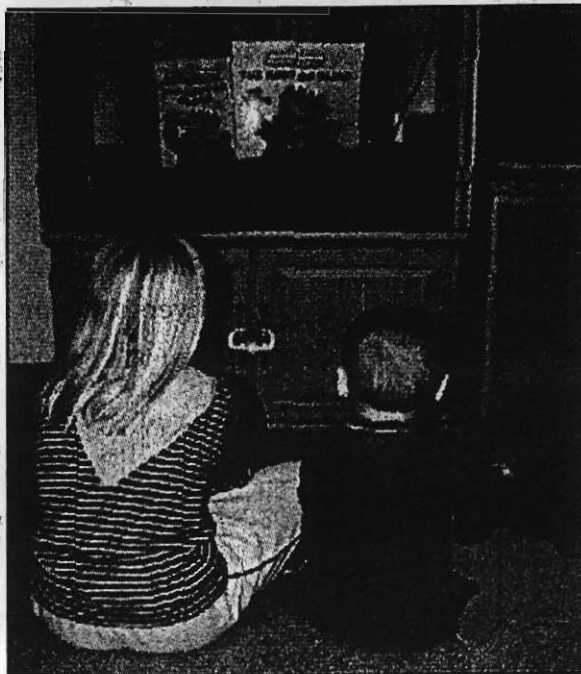
"Television can be educational...if it's used properly," said Gwyneth Best, a program assistant at the Family Support Network, and herself the mother of two.

To that end, the Family Support Network and KVIE are teaming up to offer Oakdale parents, guardians, teachers, child care providers and others entrusted with children's care a free "Ready to Learn" workshop.

The workshop combines television and specially created educational materials to promote literacy and a desire for learning in children ages two to 12.

Those attending the workshop will receive curriculum guides and children's books that tie into many PBS children's shows like "Sesame Street," "Arthur" and "Wishbone."

The "Ready to Learn" workshop will be led by a KVIE child educator.



Watching TV can help strengthen the minds of youngsters like Oakdale siblings Brittany and Matthew Best. An upcoming class can help parents learn how to use TV as a teaching tool.

Locally, the workshop will be held on Saturday, Feb. 3, from 10 a.m. to 12:30 p.m., at the Oak Valley District Hospital, 350 So. Oak Ave., in conference rooms A, B and C.

Though the workshop is free, pre-registration is required and can be made by calling 848-5406.

Karen O'Bannon, director of the Family Support Network, said offering the workshop is a natural extension of the group's mission.

"We're always looking to bring new things to the community and the parents," O'Bannon said. "And Gwyneth got onto this and I thought it was a great idea."

Best was thrilled when she learned Oakdale parents didn't have to leave their own backyard for access to what is a nationally-acclaimed workshop.

"I knew this would be a good opportunity. When I found out we could bring it from Sacramento to Oakdale, that was even better because they usually (conduct the workshop) in Sacramento," Best said.

Best added if this first workshop is well-attended, future sessions on different educational topics will be offered again locally.

O'Bannon said she thinks the workshop is a unique opportunity for Oakdale parents and children's caregivers.

"Anything we can learn about how to better use TV is a good thing," O'Bannon said. "If we're going to use it, we might as well try to use it to our advantage and our kid's advantage."

Jan. 3, 2001

CHILDREN

Crisis Center will expand to Oakdale, thanks to efforts of local couple

By SHAROKINA SHAMS
BEE STAFF WRITER

Elsie Martin stood outside an Oakdale home she's converting into a children's shelter when a stranger approached.

The woman told Martin she was 38 years old.

"Are you Elsie?" the woman asked.

"She knew my name because she had seen it in the paper," Martin recalled. "She said she was abused as a child.

"She had come from The Salvation Army and she had asked them for a toy. They had given her a little stuffed dog."

The woman gave the toy, a brown puppy, to Martin.

"Give this to a little girl, 5 years old," she said. And then she left.

The woman had come to the right person.

Martin and her husband, August Martin, are sponsoring the Oakdale Children's Guardian House, a shelter for abused children. The Children's Crisis Center of Stanislaus County, located in Modesto, will run the shelter as a satellite center. It will be the first children's shelter on the county's east side.

Martin is not a social worker, nor a counselor. In fact, just

two years ago, her big concern was helping her husband heal from a massive stroke.

And when he did, they decided together that they would return God's favor, so to speak.

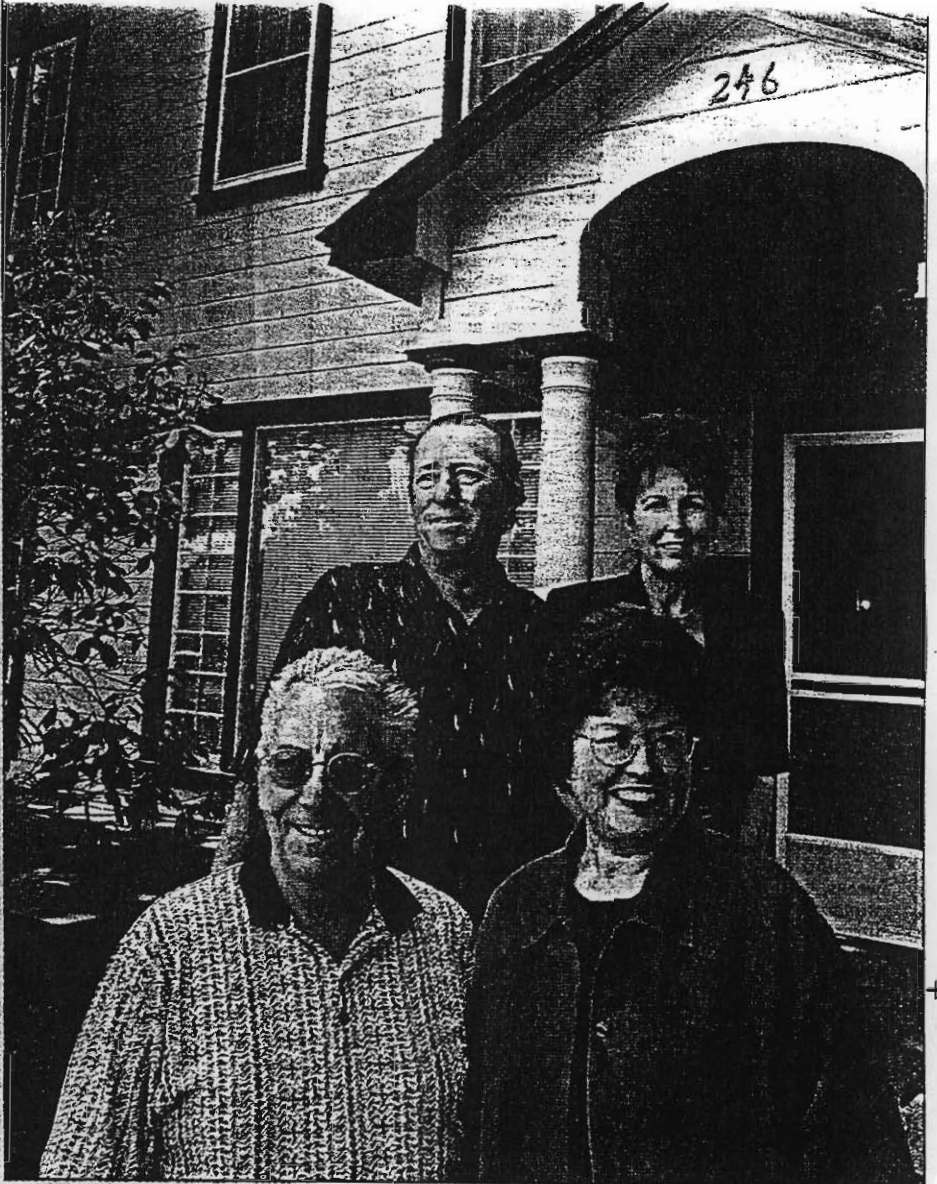
"We just wanted to return the blessing the way we had been blessed," Elsie Martin said.

So they visited other shelters. They saw the children. They heard the stories of abuse.

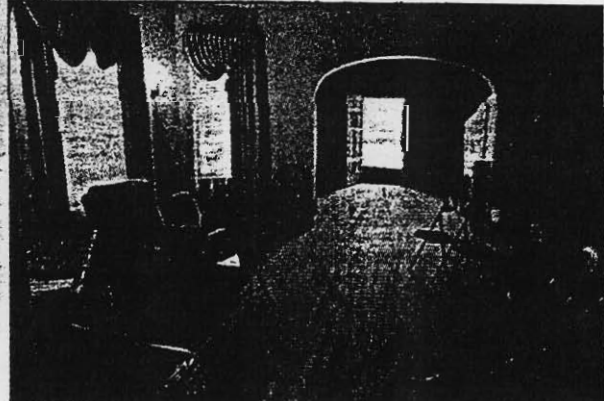
And they raised money over the past two years; last year, they bought a West F Street home that will become the shelter.

Martin's excitement about the interior decorators who are coming, the murals that will be painted and the volunteers who are helping is tempered by the knowledge of why her shelter is needed.

She shows off toys, tiny mattresses and headboards, a stroller and a high chair.



Donated children's items for house



Helping to make the Children's Crisis Center satellite site in Oakdale a reality are August and Elsie Martin, back row, and Anthony and Judv Farinha, foreground. Rooms at the Children's

HOW YOU CAN HELP

The Children's Crisis Center is holding its 12th annual Golf Classic on May 7. The fund-raiser, which includes lunch, cocktails, dinner and an auction, will benefit the Crisis Center in Modesto and the new satellite site, the Children's Guardian House in Oakdale. For more information about the event or other ways to contribute, call 577-0138.



Oak Valley Hospital
Family Support Network
presents

Family Fun Day
&
Health Fair 2001

Sunday, June 3, 2001

12:00 - 4:00pm

at

Oak Valley Hospital
350 South Oak Avenue

Fun, Food, Prizes, Games,
Health Fair & Entertainment!

See Medi-Flight HealthRap,
Bouncin Bin Houses & more!

Enter the free drawing for bicycles, helmets, and
lots of great prizes!!

For more information, call 848-5306

Oak Valley Hospital
Family Support Network
350 South Oak Avenue