

THE BOARD OF SUPERVISORS OF THE COUNTY OF STANISLAUS
ACTION AGENDA SUMMARY

DEPT: PUBLIC WORKS
Urgent _____ Routine

BOARD AGENDA # *C-6
AGENDA DATE APRIL 10, 2001

CEO Concurs with Recommendation YES _____ NO _____
(Information Attached)

4/5 Vote Required YES NO _____

SUBJECT: APPROVAL TO SET A PUBLIC HEARING ON MAY 8, 2001, AT 9:25 A.M., REGARDING FISCAL YEAR 2001/2002 ASSESSMENTS FOR VARIOUS COUNTY SERVICE AREAS

STAFF RECOMMENDATIONS:

1. SET A PUBLIC HEARING ON MAY 8, 2001, AT 9:25 A.M., REGARDING FISCAL YEAR 2001/2002 ASSESSMENTS FOR VARIOUS COUNTY SERVICE AREAS; AND,
2. ORDER THE CLERK OF THE BOARD OF SUPERVISORS TO PUBLISH A NOTICE OF SUCH HEARING PURSUANT TO SECTION 6066 OF THE GOVERNMENT CODE.

FISCAL

IMPACT: There is no fiscal impact associated with this item.

BOARD ACTION AS FOLLOWS:

No. 2001-262

On motion of Supervisor Blom, Seconded by Supervisor Caruso
and approved by the following vote,

Ayes: Supervisors: Mayfield, Blom, Simon, Caruso, and Chair Paul

Noes: Supervisors: None

Excused or Absent: Supervisors: None

Abstaining: Supervisor: None

1) Approved as recommended

2) _____ Denied

3) _____ Approved as amended

Motion:

CSA-4-9
CSA-5-9
CSA-6-9
CSA-7-8
CSA-8-8
CSA-9-8
CSA-10-A-4
CSA-11-8
CSA-12-7
CSA-13-7
CSA-14-10
CSA-15-4

ATTEST: CHRISTINE FERRARO TALLMAN, Clerk

By: Christine Ferraro Deputy

File No. 1010-08 L

SUBJECT: APPROVAL TO SET A PUBLIC HEARING ON MAY 8, 2001, AT 9:25 A.M.,
REGARDING FISCAL YEAR 2001/2002 ASSESSMENTS FOR VARIOUS COUNTY
SERVICE AREAS

PAGE: 2

DISCUSSION: Government Code Section 25210.77(A) requires that a written report, for each county service area, containing a description of each parcel of real property receiving the particular extended service and the amount of the assessment for each parcel be prepared once a year and filed with the Clerk of the Board of Supervisors. Upon filing of the report, the Clerk shall fix a time, date, and place for hearing thereon and for filing objections or protests thereto. Said reports have been filed with the Clerk and are made a part of this resolution.

POLICY

ISSUE: This action is consistent with the Board's policy of providing a safe, healthy community.

STAFFING

IMPACT: There is no staffing impact associated with this item.

CB/la

H:\SERVICES\ICSA2001.BS1.wpd

**NOTICE OF PUBLIC HEARING REGARDING
FISCAL YEAR 2001/02 ASSESSMENTS
FOR VARIOUS COUNTY SERVICE AREAS**

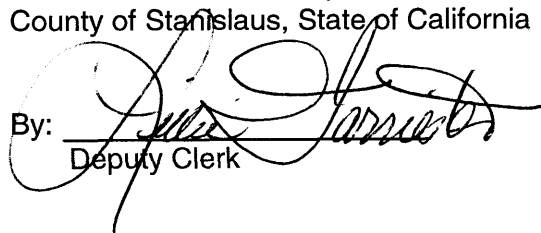
NOTICE IS HEREBY GIVEN that on Tuesday, May 8, 2001, at the hour of 9:25 a.m., or as soon thereafter as the matter may be heard, the Stanislaus County Board of Supervisors will meet in the Basement Chambers, Lower Level, 1010 10th St., Modesto, CA, to consider the approval of the proposed Fiscal Year 2001/02 Assessments for the following County Service Areas:

CSA NO. 4 - BRISTOL GLEN
CSA NO. 5 - STARLITE PLACE
CSA NO. 6 - RAYMOND TRACT
CSA NO. 7 - MODESTO AUTO CENTER
CSA NO. 8 - HONEY BEE ESTATES
CSA NO. 9 - RIVER/SOUZA
CSA NO. 10 - SALIDA
CSA NO. 11 - GILBERT ROAD
CSA NO. 12 - PEACH BLOSSOM ESTATES
CSA NO. 13 - LA JOLLA
CSA NO. 14 - UNITED PALLET
CSA NO. 15 - PATTERSON GATEWAY

NOTICE IS FURTHER GIVEN that, at the above time and place, interested persons will be given the opportunity to be heard. Material submitted to the Board for consideration (i.e. photos, petitions, etc.) will be retained by the County. If a challenge to the above application is made in court, persons may be limited to raising only those issues they or someone else raised at the public hearing described in this notice, or in written correspondence delivered to the Board. For additional information call Ron Cherrier, Stanislaus County Public Works Department at (209) 525-7571 or (209) 525-6552.

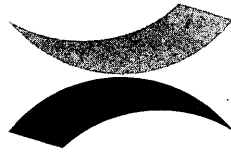
DATE: April 10, 2001

ATTEST: CHRISTINE FERRARO TALLMAN,
Clerk of the Board of Supervisors of the
County of Stanislaus, State of California

By: 
Deputy Clerk

GEORGE STILLMAN
Director

Administration
Engineering
Development Services
Transit
Facilities Services
Road Maintenance
Landfill



Public Works

STANISLAUS COUNTY

COUNTY SERVICE AREA NO. 4 ANNUAL ENGINEER'S REPORT FISCAL YEAR 2001/2002

County Service Area No. 4 (CSA 4) was established in October, 1989, to provide extended storm drainage to the Bristol Glen subdivision. The boundary of CSA 4 is shown on Exhibit "A" that is attached hereto and made a part of this Engineer's Report.

Government Code Section 25210.77(A) requires that a written report containing a description of each parcel of real property receiving the particular extended service and the amount of the assessment for each parcel be prepared once a year and filed with the Clerk of the Board of Supervisors.

There are 137 parcels within CSA 4, and each parcel receives equal benefit from the extended storm drainage. The extended storm drainage only provides a special benefit to the parcels within CSA 4, therefore, no general benefit has been assigned.

The formula that is being used to calculate the assessment is the total cost to operate and maintain the storm drain system divided equally by the number of parcels within CSA 4. This is the same formula that has been used since CSA 4 was formed.

The CSA 4 Budget for Fiscal Year 2000/2001 is as follows:

DESCRIPTION	AMOUNT
Budget Item #1: Pump operation and maintenance	\$1,000.00
Budget Item #2: Basin maintenance	2,000.00
Budget Item #3: Collection system maintenance	1,150.00
Budget Item #4: Administration	150.00
Total Operation & Maintenance Cost	<u>\$4,300.00</u>

FISCAL YEAR 2000/2001 ASSESSMENT CALCULATION

Improvement costs	\$ 0.00
Operation & Maintenance costs	<u>4,300.00</u>
Total Costs	\$4,300.00

2001/2002 Assessment = \$4,300.00 ÷ 137 parcels = \$31.39 per parcel

2000/2001 Assessment = \$31.39 per parcel

Proposition 218 took effect on July 1, 1997, and requires an assessment ballot procedure in order to increase the assessment. Since there is no increase in the annual assessment, the Fiscal Year 2001/2002 assessment is in compliance with Proposition 218.

COUNTY SERVICE AREA NO. 4
ANNUAL ENGINEER'S REPORT
FISCAL YEAR 2001/2002

The parcels subject to the assessment are listed on Exhibit "B" that is attached hereto and made a part of this Engineer's Report.

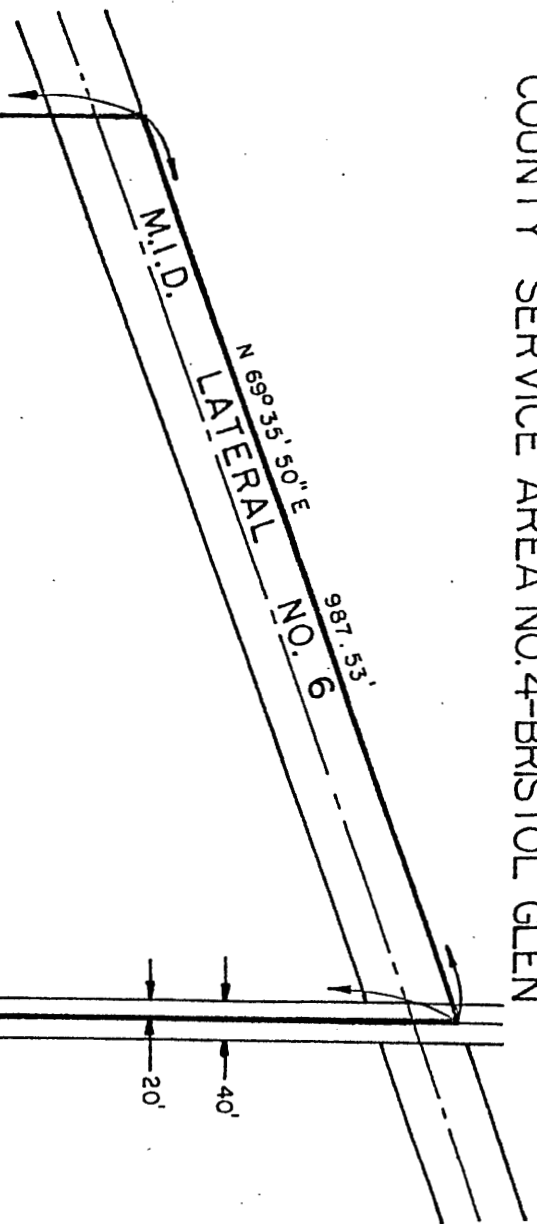


GEORGE STILLMAN, DIRECTOR
Stanislaus County Department of Public Works

April 3, 2001



COUNTY SERVICE AREA NO. 4-BRISTOL GLEN



LANDS OF MORRISON HOMES
(31.629 AC.)

N 0° 46' 20" W 1308.71'

EAST LINE OF THE
SOUTHEAST 1/4 OF SEC. 4, 3/8
S 0° 44' 00" E 1655.74'

FINNEY ROAD

N 89° 49' 50" W 929.13'

POINT OF BEGINNING

3 MURPHY RD.

SOUTHEAST COR.
SEC. 4, 3/8



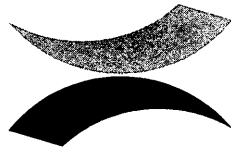
SCALE 1"=200'

EXHIBIT "A"

GEORGE STILLMAN

Director

Administration
Engineering
Development Services
Transit
Facilities Services
Road Maintenance
Landfill



Public Works

STANISLAUS COUNTY

COUNTY SERVICE AREA NO. 5 ANNUAL ENGINEER'S REPORT FISCAL YEAR 2001/2002

County Service Area No. 5 (CSA 5) was established in March, 1990, to provide extended storm drainage. The boundary of CSA 5 is shown on Exhibits "A1" and "A2" that are attached hereto and made a part of this Engineer's Report.

Government Code Section 25210.77(A) requires that a written report containing a description of each parcel of real property receiving the particular extended service and the amount of the assessment for each parcel be prepared once a year and filed with the Clerk of the Board of Supervisors.

There are 192 parcels within CSA 5, and each parcel receives benefit from the extended storm drainage. The extended storm drainage only provides a special benefit to the parcels within CSA 5, therefore, no general benefit has been assigned. The basis of benefit for CSA 5 was determined to be equal for all Equivalent Dwelling Units within CSA 5. The method used to calculate the assessment is as follows:

Levy per E.D.U. = Total Balance to Levy ÷ Total E.D.U.

Service Charge = Levy per E.D.U. x E.D.U. per Acre or Lot

PROPERTY TYPE	E.D.U. PER ACRE OR LOT	TOTAL E.D.U.
Single Family Residential (190 lots)	1.00 Per Lot	190.00
Industrial/Storm Drain Property (3.31 acres)	3.5 Per Acre	11.59
	Total	201.59

The CSA 5 Budget for Fiscal Year 2001/2002 is as follows:

DESCRIPTION	AMOUNT
Budget Item #1: Pump operation and maintenance	\$1,500.00
Budget Item #2: Basin maintenance	3,000.00
Budget Item #3: Collection system maintenance	1,850.00
Budget Item #4: Administration	150.00
Total Cost of Storm Drain Maintenance	<u>\$6,500.00</u>

**COUNTY SERVICE AREA NO. 5
ANNUAL ENGINEER'S REPORT
FISCAL YEAR 2001/2002**

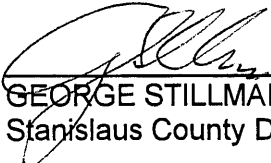
FISCAL YEAR 2001/2002 ASSESSMENT CALCULATION

Improvement costs	\$ 0.00
Operation & Maintenance costs	<u>6,500.00</u>
Total Costs	\$6,500.00

2001/2002 Assessment = \$6,500.00 ÷ 201.59 E.D.U. = \$32.24/E.D.U.
Single Family Residential: 1.00 E.D.U./parcel x \$32.24/E.D.U. = \$32.24/parcel
Industrial Property: 3.50 E.D.U./acre x \$32.24/E.D.U. = \$112.85/acre
2000/2001 Assessment = \$32.24/E.D.U.

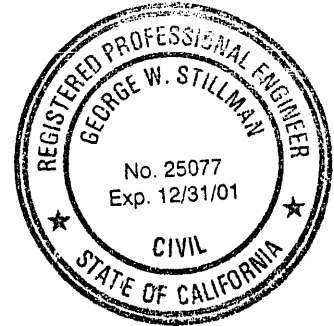
Proposition 218 took effect on July 1, 1997, and requires an assessment ballot procedure in order to increase the assessment. Since there is no increase in the assessment, the Fiscal Year 2001/2002 assessment is in compliance with Proposition 218.

The parcels subject to the assessment are listed on Exhibit "B" that is attached hereto and made a part of this Engineer's Report.

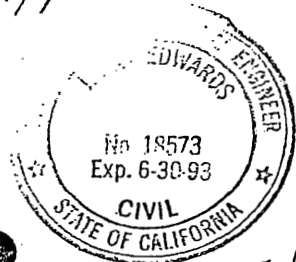


GEORGE STILLMAN, DIRECTOR
Stanislaus County Department of Public Works

April 3, 2001

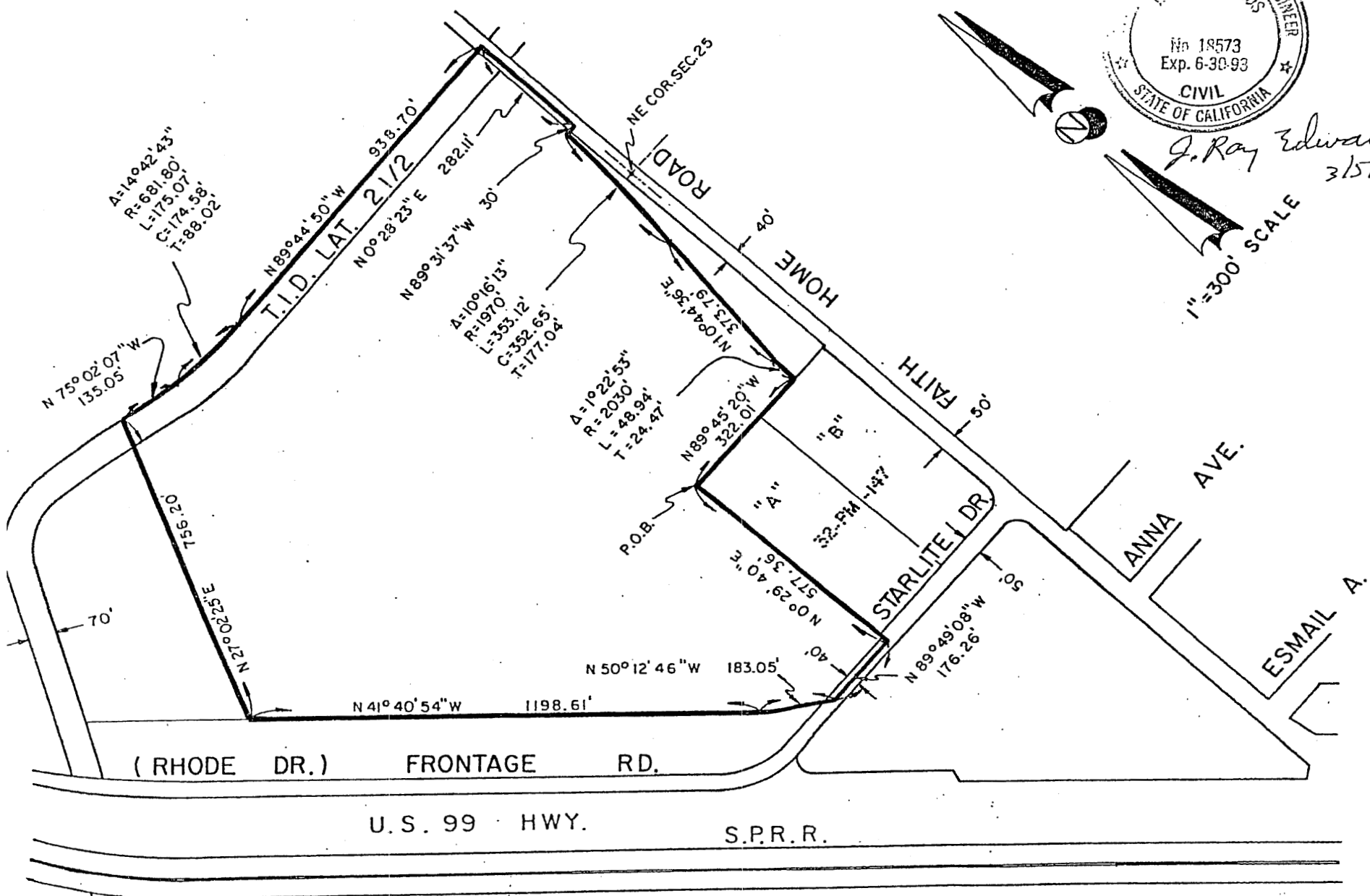


Approved



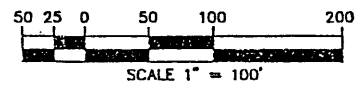
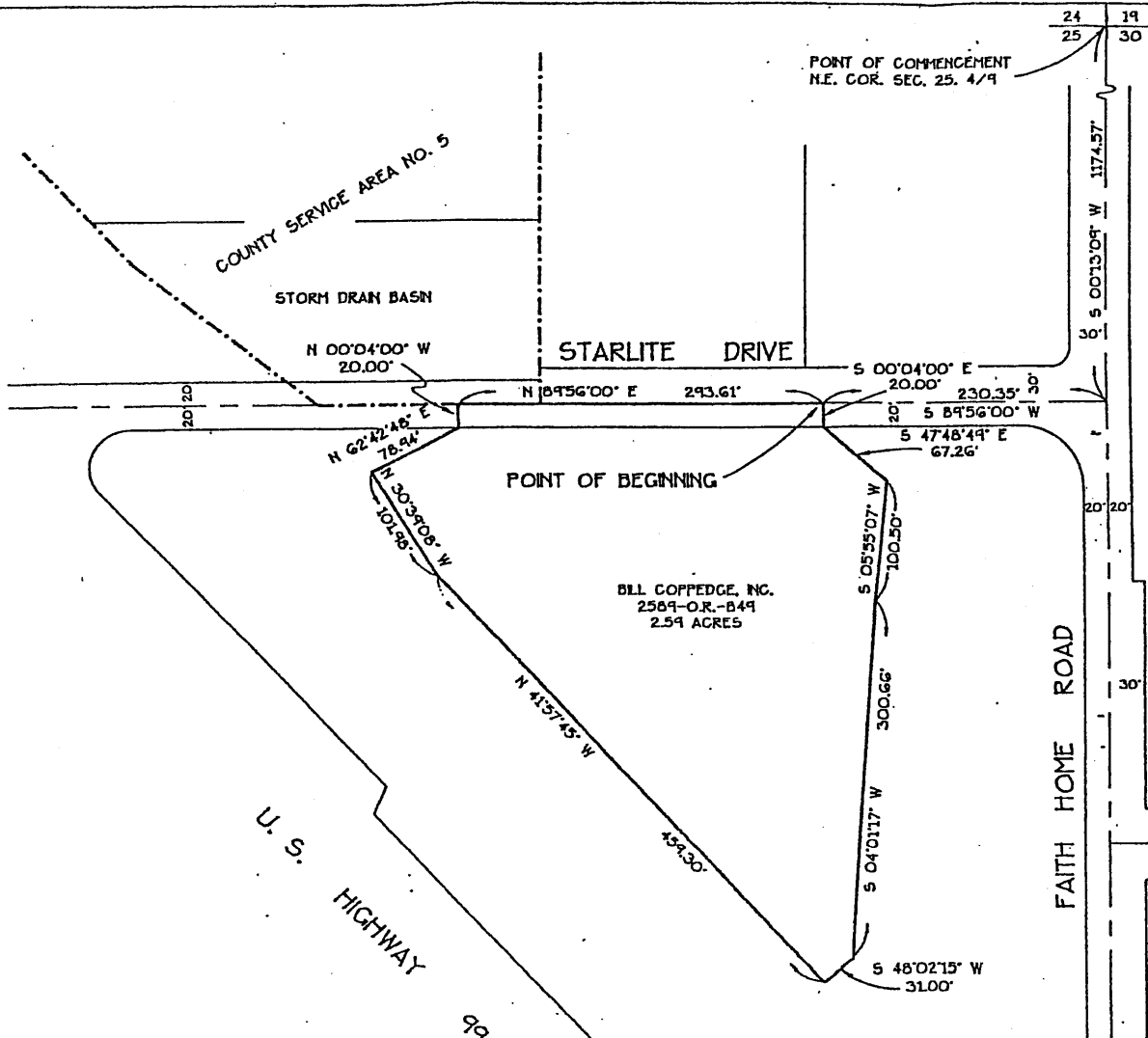
J. Ray Edwards
3/5/90

1" = 300' SCALE

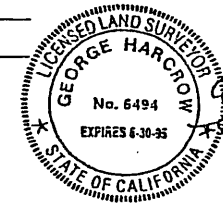


COUNTY SERVICE AREA NO.5 - STARLITE PLACE
SEC 24 R 25 T4S R9F M.D.M.

Exhibit A1



- - - - - EXISTING BOUNDARY OF COUNTY SERVICE AREA NO. 5
 _____ BOUNDARY OF PROPOSED ANNEXATION TO COUNTY SERVICE AREA NO. 5



[Signature]
 EXHIBIT A2

 LEW-GARCIA-DAVIS ENGINEERING/SURVEYING PLANNING/MAPPING 3641 MITCHELL ROAD CERES, CA. 95307 (209) 538-3360	ANNEXATION TO COUNTY SERVICE AREA NO. 5 FOR BILL COPPEDGE, INC.	
	DATE: 2/29/95	SCALE: 1" = 100'
	DRAWN BY: S.H.	DWG FILE: 5030SKCH
CHECKED BY: [Signature]	JOB NO. 95030	

COUNTY SERVICE AREA NO. 5
 FISCAL YEAR 2001/2002 ASSESSMENT LISTING

EXHIBIT "B"

Total Assessment Collected:

\$6,499.13

Assessor's Parcel No.	2001/2002 Assessment
041 4009	\$284.38
041 5907	\$32.24
041 5908	\$32.24
041 5909	\$32.24
041 5910	\$32.24
041 5911	\$32.24
041 5912	\$32.24
041 5913	\$32.24
041 5914	\$32.24
041 5915	\$32.24
041 5916	\$32.24
041 5917	\$32.24
041 5918	\$32.24
041 5919	\$32.24
041 5920	\$32.24
041 5921	\$32.24
041 5922	\$32.24
041 5923	\$32.24
041 5924	\$32.24
041 5925	\$32.24
041 5926	\$32.24
041 5927	\$32.24
041 5928	\$32.24
041 5929	\$32.24
041 5930	\$32.24
041 5931	\$32.24
041 5932	\$32.24
041 5933	\$32.24
041 5934	\$32.24
041 5935	\$32.24
041 5936	\$32.24
041 5937	\$32.24
041 5938	\$32.24
041 5939	\$32.24
041 5944	\$32.24
041 5945	\$32.24
041 5946	\$32.24
041 5947	\$32.24
041 5948	\$32.24
041 5949	\$32.24
041 5950	\$32.24
041 5951	\$32.24
041 5952	\$32.24
041 5953	\$32.24
041 5954	\$32.24
041 5955	\$32.24
041 5956	\$32.24
041 5958	\$32.24
041 6003	\$32.24
041 6004	\$32.24
041 6005	\$32.24
041 6006	\$32.24
041 6007	\$32.24
041 6008	\$32.24
041 6009	\$32.24
041 6010	\$32.24

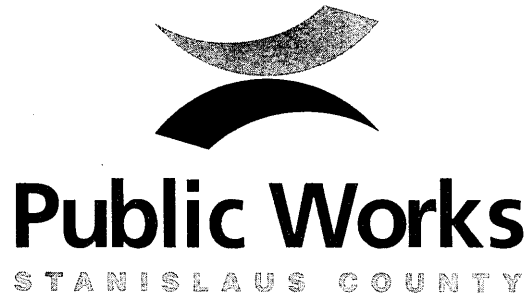
Assessor's Parcel No.	2001/2002 Assessment
041 6011	\$32.24
041 6012	\$32.24
041 6013	\$32.24
041 6014	\$32.24
041 6015	\$32.24
041 6016	\$32.24
041 6017	\$32.24
041 6018	\$32.24
041 6019	\$32.24
041 6020	\$32.24
041 6021	\$32.24
041 6022	\$32.24
041 6023	\$32.24
041 6024	\$32.24
041 6025	\$32.24
041 6026	\$32.24
041 6027	\$32.24
041 6028	\$32.24
041 6029	\$32.24
041 6030	\$32.24
041 6031	\$32.24
041 6032	\$32.24
041 6033	\$32.24
041 6034	\$32.24
041 6035	\$32.24
041 6036	\$32.24
041 6101	\$32.24
041 6102	\$32.24
041 6103	\$32.24
041 6104	\$32.24
041 6105	\$32.24
041 6106	\$32.24
041 6107	\$32.24
041 6108	\$32.24
041 6109	\$32.24
041 6110	\$32.24
041 6111	\$32.24
041 6112	\$32.24
041 6113	\$32.24
041 6114	\$32.24
041 6115	\$32.24
041 6116	\$32.24
041 6117	\$32.24
041 6118	\$32.24
041 6119	\$32.24
041 6120	\$32.24
041 6121	\$32.24
041 6122	\$32.24
041 6123	\$32.24
041 6124	\$32.24
041 6125	\$32.24
041 6126	\$32.24
041 6127	\$32.24
041 6128	\$32.24
041 6129	\$32.24
041 6130	\$32.24

Assessor's Parcel No.	2001/2002 Assessment
041 6131	\$32.24
041 6132	\$32.24
041 6133	\$32.24
041 6134	\$32.24
041 6135	\$32.24
041 6136	\$32.24
041 6140	\$32.24
041 6141	\$32.24
041 6142	\$32.24
041 6143	\$32.24
041 6144	\$32.24
041 6145	\$32.24
041 6146	\$32.24
041 6147	\$32.24
041 6148	\$32.24
041 6149	\$32.24
041 6150	\$32.24
041 6151	\$32.24
041 6152	\$32.24
041 6153	\$32.24
041 6154	\$32.24
041 6155	\$32.24
041 6156	\$32.24
041 6157	\$32.24
041 6158	\$32.24
041 6159	\$32.24
041 6160	\$32.24
041 6161	\$32.24
041 6162	\$32.24
041 6163	\$32.24
041 6164	\$32.24
041 6165	\$32.24
041 6166	\$32.24
041 6167	\$32.24
041 6168	\$32.24
041 6169	\$32.24
041 6170	\$32.24
041 6171	\$32.24
041 6172	\$32.24
041 6201	\$32.24
041 6202	\$32.24
041 6203	\$32.24
041 6204	\$32.24
041 6208	\$89.15
041 6212	\$32.24
041 6213	\$32.24
041 6214	\$32.24
041 6215	\$32.24
041 6216	\$32.24
041 6217	\$32.24
041 6218	\$32.24
041 6219	\$32.24
041 6220	\$32.24
041 6221	\$32.24
041 6222	\$32.24
041 6223	\$32.24

Assessor's Parcel No.	2001/2002 Assessment
041 6224	\$32.24
041 6225	\$32.24
041 6226	\$32.24
041 6227	\$32.24
041 6228	\$32.24
041 6231	\$32.24
041 6235	\$32.24
041 6236	\$32.24
041 6237	\$32.24
041 6238	\$32.24
041 6239	\$32.24
041 6240	\$32.24
041 6241	\$32.24
041 6242	\$32.24
041 6243	\$32.24
041 6244	\$32.24
041 6245	\$32.24
041 6246	\$32.24
041 6247	\$32.24
041 6248	\$32.24
041 6249	\$32.24
041 6250	\$32.24
041 6251	\$32.24
041 6252	\$32.24

GEORGE STILLMAN
Director

Administration
Engineering
Development Services
Transit
Facilities Services
Road Maintenance
Landfill



**COUNTY SERVICE AREA NO. 6
ANNUAL ENGINEER'S REPORT
FISCAL YEAR 2001/2002**

County Service Area No. 6 (CSA 6) was established in May, 1990, to provide extended storm drainage to the Raymond Tract subdivision. The boundary of CSA 6 is shown on Exhibit "A" that is attached hereto and made a part of this Engineer's Report.

Government Code Section 25210.77(A) requires that a written report containing a description of each parcel of real property receiving the particular extended service and the amount of the assessment for each parcel be prepared once a year and filed with the Clerk of the Board of Supervisors.

There are 44 parcels within CSA 6, and each parcel receives equal benefit from the extended storm drainage. The extended storm drainage only provides a special benefit to the parcels within CSA 6, therefore, no general benefit has been assigned.

The formula that is being used to calculate the assessment is the total cost to operate and maintain the storm drain system divided equally by the number of parcels within CSA 6. This is the same formula that has been used since CSA 6 was formed.

The CSA 6 Budget for Fiscal Year 2001/2002 is as follows:

DESCRIPTION	AMOUNT
Budget Item #1: Basin maintenance	\$1,100.00
Budget Item #2: Collection system maintenance	800.00
Budget Item #3: Administration	<u>100.00</u>
Total Cost of Storm Drain Maintenance	\$2,000.00

FISCAL YEAR 2001/2002 ASSESSMENT CALCULATION

Improvement costs	\$ 0.00
Operation & Maintenance costs	<u>2,000.00</u>
Total Costs	\$2,000.00

2001/2002 Assessment = \$2,000.00 ÷ 44 parcels = \$45.45 per parcel

2000/2001 Assessment = \$45.45 per parcel

Proposition 218 took effect on July 1, 1997, and requires an assessment ballot procedure in order to increase the assessment. Since there is no increase in the assessment, the Fiscal Year 2001/2002 assessment is in compliance with Proposition 218.

COUNTY SERVICE AREA NO. 6
ANNUAL ENGINEER'S REPORT
FISCAL YEAR 2001/2002

The parcels subject to the assessment are listed on Exhibit "B" that is attached hereto and made a part of this Engineer's Report.

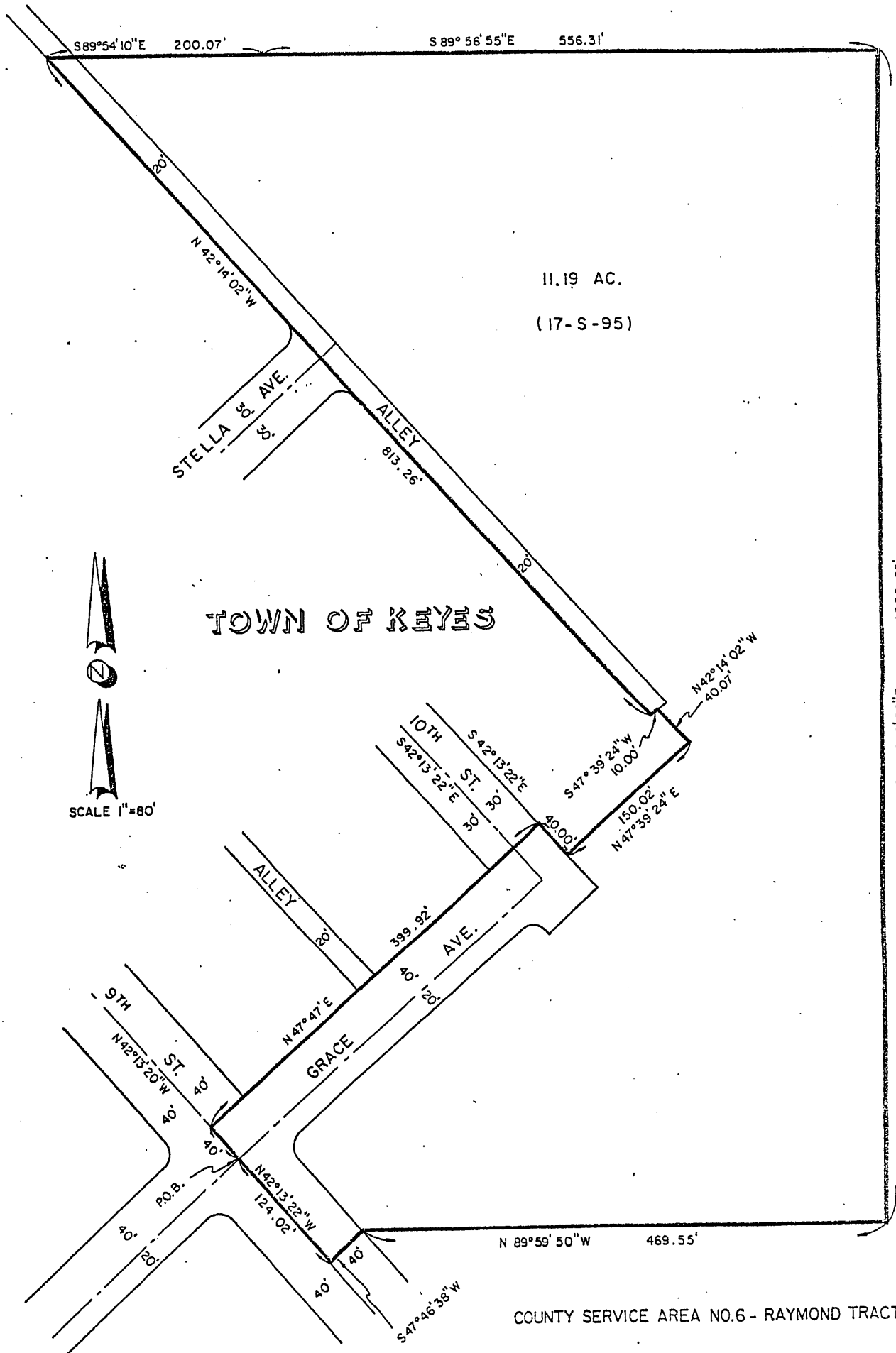


GEORGE STILLMAN, DIRECTOR
Stanislaus County Department of Public Works

April 3, 2001



EXHIBIT "A"



SEC.30, T4S., R10E., M.D.M

TOWN OF KEYES, STANISLAUS COUNTY

COUNTY SERVICE AREA NO. 6
FISCAL YEAR 2001/2002 ASSESSMENT LISTING

EXHIBIT "B"

Total Assessment Collected:
\$1,999.80

Assessor's Parcel No.	2001/2002 Assessment			
045 6503	\$45.45			
045 6504	\$45.45			
045 6505	\$45.45			
045 6506	\$45.45			
045 6507	\$45.45			
045 6508	\$45.45			
045 6509	\$45.45			
045 6510	\$45.45			
045 6511	\$45.45			
045 6512	\$45.45			
045 6513	\$45.45			
045 6514	\$45.45			
045 6515	\$45.45			
045 6516	\$45.45			
045 6517	\$45.45			
045 6518	\$45.45			
045 6519	\$45.45			
045 6520	\$45.45			
045 6521	\$45.45			
045 6522	\$45.45			
045 6523	\$45.45			
045 6524	\$45.45			
045 6525	\$45.45			
045 6526	\$45.45			
045 6527	\$45.45			
045 6528	\$45.45			
045 6529	\$45.45			
045 6530	\$45.45			
045 6531	\$45.45			
045 6532	\$45.45			
045 6533	\$45.45			
045 6534	\$45.45			
045 6535	\$45.45			
045 6536	\$45.45			
045 6537	\$45.45			
045 6538	\$45.45			
045 6539	\$45.45			
045 6540	\$45.45			
045 6541	\$45.45			
045 6542	\$45.45			
045 6543	\$45.45			
045 6544	\$45.45			
045 6545	\$45.45			
045 6546	\$45.45			

GEORGE STILLMAN
Director

Administration
Engineering
Development Services
Transit
Facilities Services
Road Maintenance
Landfill



COUNTY SERVICE AREA NO. 7
ANNUAL ENGINEER'S REPORT
FISCAL YEAR 2001/2002

County Service Area No. 7 (CSA 7) was established in July, 1990, to provide extended storm drainage. The boundary of CSA 7 is shown on Exhibit "A" that is attached hereto and made a part of this Engineer's Report.

Government Code Section 25210.77(A) requires that a written report containing a description of each parcel of real property receiving the particular extended service and the amount of the assessment for each parcel be prepared once a year and filed with the Clerk of the Board of Supervisors.

There are 7 parcels within CSA 7, and each parcel receives benefit from the extended storm drainage based on the parcel's net acreage. The extended storm drainage only provides a special benefit to the parcels within CSA 7, therefore, no general benefit has been assigned.

The formula that is being used to calculate the assessment is the total cost to operate and maintain the storm drain system divided equally by the number of net acres within CSA 7. This is the same formula that has been used since CSA 7 was formed.

The CSA 7 Budget for Fiscal Year 2001/2002 is as follows:

DESCRIPTION	AMOUNT
Budget Item #1: Pump operation and maintenance	\$ 900.00
Budget Item #2: Basin maintenance	750.00
Budget Item #3: Collection system maintenance	250.00
Budget Item #4: Administration	<u>100.00</u>
Total Cost of Storm Drain Maintenance	\$2,000.00

FISCAL YEAR 2001/2002 ASSESSMENT CALCULATION

Improvement costs	\$ 0.00
Operation & Maintenance costs	<u>2,000.00</u>
Total Costs	\$2,000.00

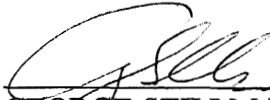
2001/2002 Assessment = \$2,000.00 ÷ 7.88 net acres = \$253.81 per net acre

**COUNTY SERVICE AREA NO. 7
ANNUAL ENGINEER'S REPORT
FISCAL YEAR 2001/2002**

2000/2001 Assessment = \$253.81 per net acre

Proposition 218 took effect on July 1, 1997, and requires an assessment ballot procedure in order to increase the assessment. Since there is no increase in the assessment, the Fiscal Year 2001/2002 assessment is in compliance with Proposition 218.

The parcels subject to the assessment are listed on Exhibit "B" that is attached hereto and made a part of this Engineer's Report.



GEORGE STILLMAN, DIRECTOR
Stanislaus County Department of Public Works

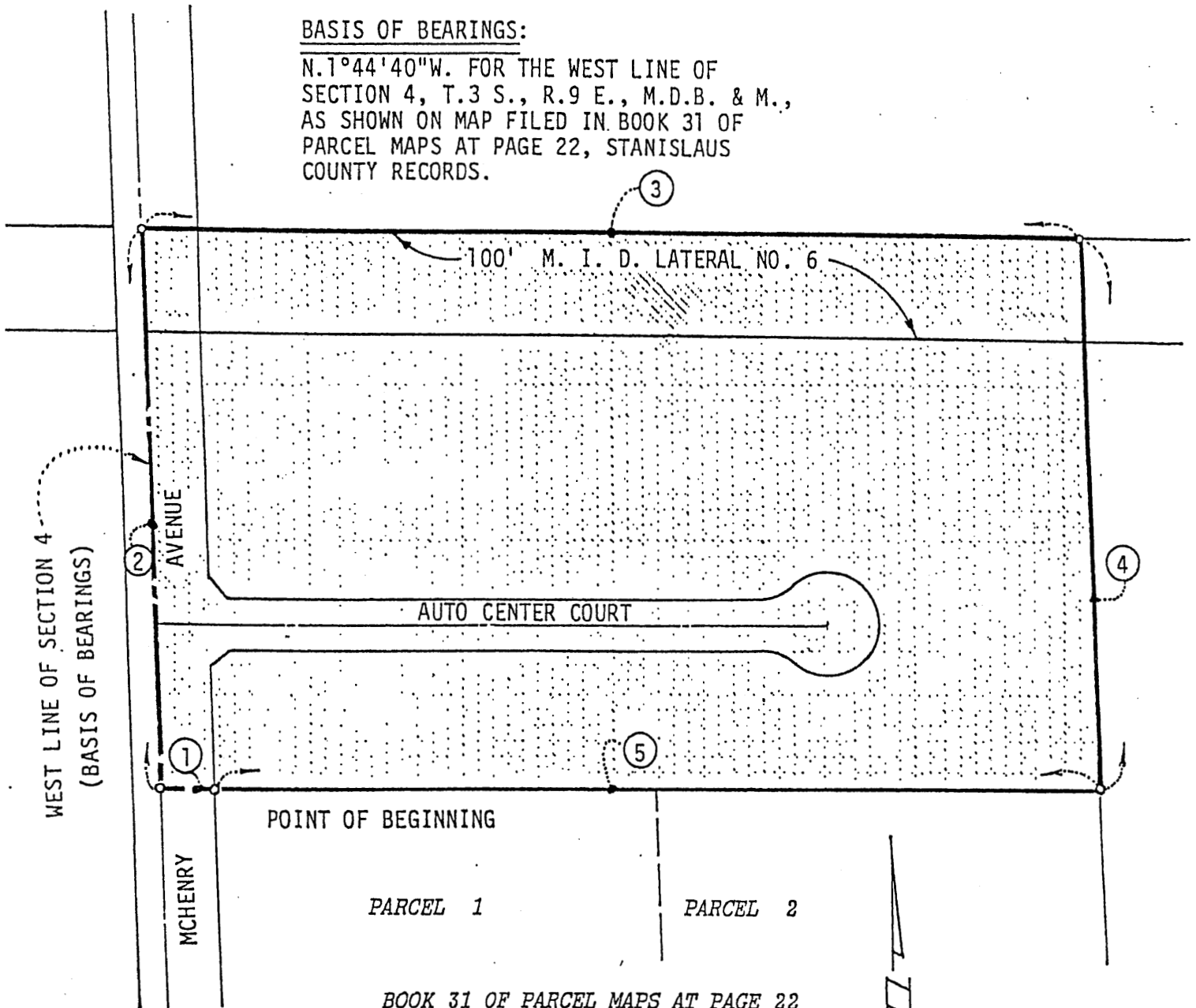
April 3, 2001



EXHIBIT "A"

BASIS OF BEARINGS:

N.1°44'40"W. FOR THE WEST LINE OF SECTION 4, T.3 S., R.9 E., M.D.B. & M., AS SHOWN ON MAP FILED IN BOOK 31 OF PARCEL MAPS AT PAGE 22, STANISLAUS COUNTY RECORDS.



POINT OF BEGINNING

PARCEL 1

PARCEL 2

BOOK 31 OF PARCEL MAPS AT PAGE 22

①	S.89°54'48"W.	55.02'
②	N. 1°44'40"W.	536.13'
③	S.89°56'22"E.	929.22'
④	S. 1°44'24"E.	533.74'
⑤	S.89°54'48"W.	874.09'

SCALE 1" = 150'

CSA No. 7 - MODESTO AUTO CENTER

COUNTY SERVICE AREA NO. 7
FISCAL YEAR 2001/2002 ASSESSMENT LISTING

EXHIBIT "B"

Assessor's Parcel No.	Acres	2001/2002 Assessment
082-0920	0.80	\$203.05
082-0923	1.85	\$469.55
082-0924	1.93	\$489.85
082-0925	1.74	\$441.63
082-0926	0.31	\$78.68
082-0927	0.44	\$111.68
082-0928	0.81	\$205.59

2001/2002
Assessment
Per Acre
\$253.81

Total Assessment Collected:
\$2,000.02

GEORGE STILLMAN
Director

Administration
Engineering
Development Services
Transit
Facilities Services
Road Maintenance
Landfill



Public Works

STANISLAUS COUNTY

COUNTY SERVICE AREA NO. 8 ANNUAL ENGINEER'S REPORT FISCAL YEAR 2001/2002

County Service Area No. 8 (CSA 8) was established in October, 1990, to provide extended storm drainage to the Honey Bee Estates subdivision. The boundary of CSA 8 is shown on Exhibit "A" that is attached hereto and made a part of this Engineer's Report.

Government Code Section 25210.77(A) requires that a written report containing a description of each parcel of real property receiving the particular extended service and the amount of the assessment for each parcel be prepared once a year and filed with the Clerk of the Board of Supervisors.

There are 24 parcels within CSA 8, and each parcel receives equal benefit from the extended storm drainage. The extended storm drainage only provides a special benefit to the parcels within CSA 8, therefore, no general benefit has been assigned.

The formula that is being used to calculate the assessment is the total cost to operate and maintain the storm drain system divided equally by the number of parcels within CSA 8. This is the same formula that has been used since CSA 8 was formed.

The CSA 8 Budget for Fiscal Year 2001/2002 is as follows:

DESCRIPTION	AMOUNT
Budget Item #1: Basin maintenance	\$ 900.00
Budget Item #2: Collection system maintenance	500.00
Budget Item #3: Administration	<u>100.00</u>
Total Cost of Storm Drain Maintenance	\$1,500.00

FISCAL YEAR 2001/2002 ASSESSMENT CALCULATION

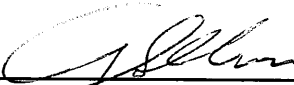
Improvement costs	\$ 0.00
Operation & Maintenance costs	<u>1,500.00</u>
Total Costs	\$1,500.00

2001/2002 Assessment = $\$1,500.00 \div 24$ parcels = \$62.50 per parcel
2000/2001 Assessment = \$62.50 per parcel

Proposition 218 took effect on July 1, 1997, and requires an assessment ballot procedure in order to increase the assessment. Since there is no increase in the assessment, the Fiscal Year 2001/2002 assessment is in compliance with Proposition 218.

COUNTY SERVICE AREA NO. 8
ANNUAL ENGINEER'S REPORT
FISCAL YEAR 2001/2002

The parcels subject to the assessment are listed on Exhibit "B" that is attached hereto and made a part of this Engineer's Report.



GEORGE STILLMAN, DIRECTOR
Stanislaus County Department of Public Works

April 3, 2001



COUNTY SERVICE AREA NO. 8
FISCAL YEAR 2001/2002 ASSESSMENT LISTING

EXHIBIT "B"

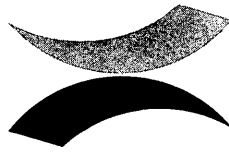
<u>Assessor's Parcel No.</u>	<u>2001/2002 Assessment</u>
133 2118	\$62.50
133 2119	\$62.50
133 2120	\$62.50
133 2121	\$62.50
133 2122	\$62.50
133 2123	\$62.50
133 2124	\$62.50
133 2125	\$62.50
133 2126	\$62.50
133 2127	\$62.50
133 2128	\$62.50
133 2129	\$62.50
133 2131	\$62.50
133 2132	\$62.50
133 2133	\$62.50
133 2134	\$62.50
133 2135	\$62.50
133 2136	\$62.50
133 2137	\$62.50
133 2138	\$62.50
133 2139	\$62.50
133 2141	\$62.50
133 2142	\$62.50
133 2143	\$62.50

2001/2002
Assessment
\$62.50

Total Assessment Collected:
\$1,500.00

GEORGE STILLMAN
Director

Administration
Engineering
Development Services
Transit
Facilities Services
Road Maintenance
Landfill



Public Works

STANISLAUS COUNTY

COUNTY SERVICE AREA NO. 9 ANNUAL ENGINEER'S REPORT FISCAL YEAR 2001/2002

County Service Area No. 9 (CSA 9) was established in December, 1990, to provide extended storm drainage to the Garden Grove, Golden Best, and Pine Ridge Plaza subdivisions. The boundary of CSA 9 is shown on Exhibit "A" that is attached hereto and made a part of this Engineer's Report.

Government Code Section 25210.77(A) requires that a written report containing a description of each parcel of real property receiving the particular extended service and the amount of the assessment for each parcel be prepared once a year and filed with the Clerk of the Board of Supervisors.

There are 74 parcels within CSA 9, and each parcel receives equal benefit from the extended storm drainage. The extended storm drainage only provides a special benefit to the parcels within CSA 9, therefore, no general benefit has been assigned.

The formula that is being used to calculate the assessment is the total cost to operate and maintain the storm drain system divided equally by the number of parcels within CSA 9. This is the same formula that has been used since CSA 9 was formed.

The CSA 9 Budget for Fiscal Year 2001/2002 is as follows:

DESCRIPTION	AMOUNT
Budget Item #1: Basin maintenance	\$1,750.00
Budget Item #2: Collection system maintenance	1,100.00
Budget Item #3: Administration	<u>150.00</u>
Total Cost of Storm Drain Maintenance	\$3,000.00

FISCAL YEAR 2001/2002 ASSESSMENT CALCULATION

Improvement costs	\$ 0.00
Operation & Maintenance costs	<u>3,000.00</u>
Total Costs	\$3,000.00

2001/2002 Assessment = \$3,000.00 ÷ 74 parcels = \$40.54 per parcel

2000/2001 Assessment = \$40.54 per parcel

Proposition 218 took effect on July 1, 1997, and requires an assessment ballot procedure in order to increase the assessment. Since there is no increase in the assessment, the Fiscal Year 2001/2002 assessment is in compliance with Proposition 218.

COUNTY SERVICE AREA NO. 9
ANNUAL ENGINEER'S REPORT
FISCAL YEAR 2001/2002

The parcels subject to the assessment are listed on Exhibit "B" that is attached hereto and made a part of this Engineer's Report.



GEORGE STILLMAN, DIRECTOR
Stanislaus County Department of Public Works

April 3, 2001





**GARDNER
FEUSI
COMPANY**

1722 PROFESSIONAL DRIVE
SUITE C
SACRAMENTO, CA 95825

(916) 482-5177

JOB NO. 87-32

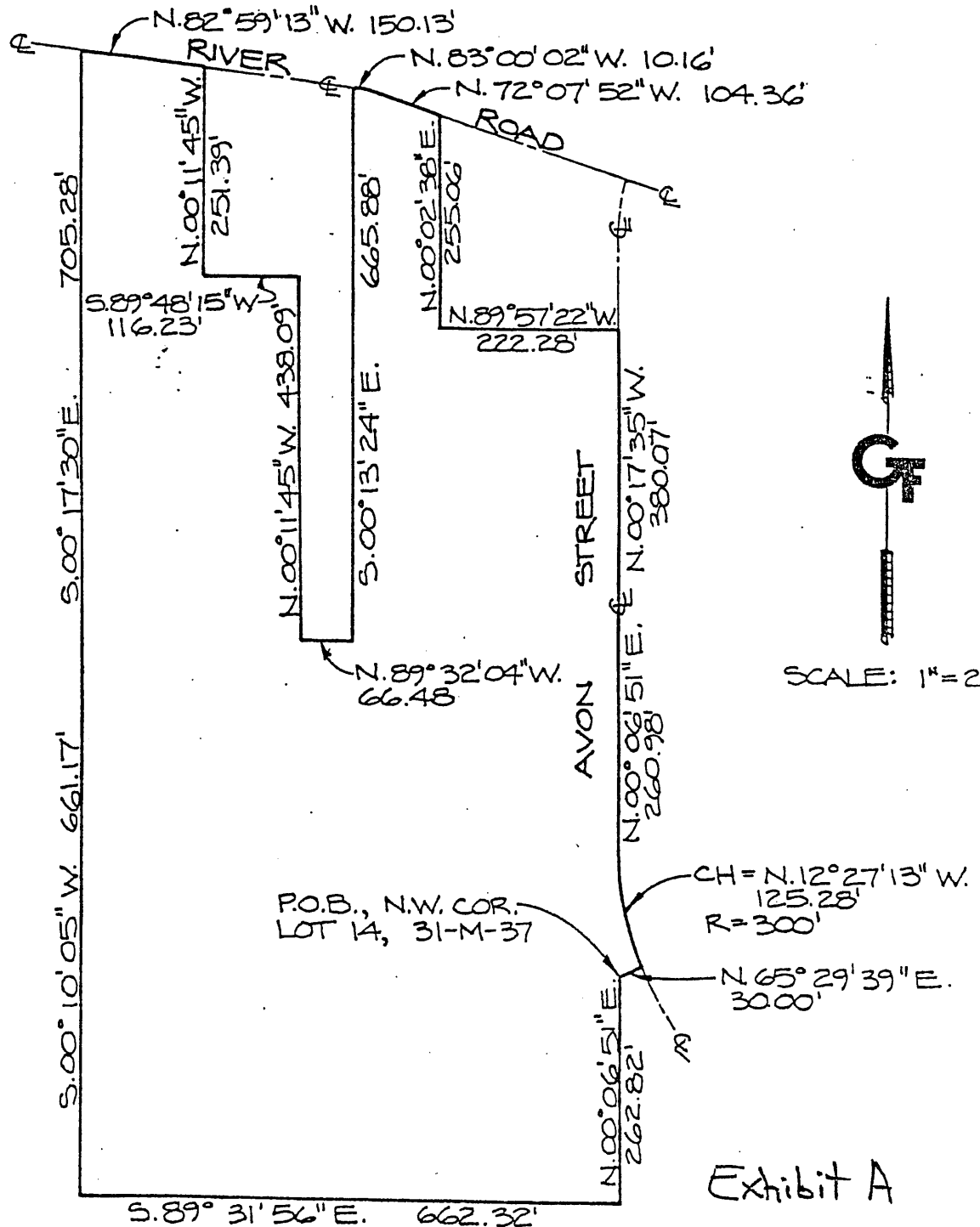
SCALE 1"=200'

DRAWN BY A.F.

CHECKED BY S.G.

DATE APRIL 1990

STORM DRAIN MAINTENANCE SERVICE AREA EXHIB



COUNTY SERVICE AREA NO. 9
 FISCAL YEAR 2001/2002 ASSESSMENT LISTING

EXHIBIT "B"

Assessor's Parcel No.	2001/2002 Assessment
038 0841	\$40.54
038 0842	\$40.54
038 0843	\$40.54
038 0844	\$40.54
038 0845	\$40.54
038 0846	\$40.54
038 0847	\$40.54
038 0848	\$40.54
038 0849	\$40.54
038 0850	\$40.54
038 0851	\$40.54
038 0852	\$40.54
038 0853	\$40.54
038 0854	\$40.54
038 0855	\$40.54
038 0856	\$40.54
038 0857	\$40.54
038 0858	\$40.54
038 1139	\$40.54
038 1140	\$40.54
038 1141	\$40.54
038 1142	\$40.54
038 1143	\$40.54
038 1144	\$40.54
038 1145	\$40.54
038 1146	\$40.54
038 1147	\$40.54
038 1148	\$40.54
038 1149	\$40.54
038 1150	\$40.54
038 1151	\$40.54
038 1152	\$40.54
038 1153	\$40.54
038 1154	\$40.54
038 1155	\$40.54
038 1156	\$40.54
038 1157	\$40.54
038 1158	\$40.54
038 1159	\$40.54
038 5101	\$40.54
038 5104	\$40.54
038 5105	\$40.54
038 5106	\$40.54
038 5107	\$40.54
038 5108	\$40.54
038 5109	\$40.54
038 5110	\$40.54
038 5111	\$40.54
038 5112	\$40.54
038 5113	\$40.54
038 5114	\$40.54
038 5115	\$40.54
038 5116	\$40.54
038 5117	\$40.54
038 5118	\$40.54
038 5119	\$40.54

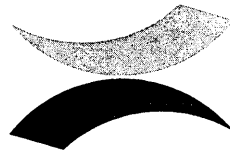
Assessor's Parcel No.	2001/2002 Assessment
038 5120	\$40.54
038 5121	\$40.54
038 5122	\$40.54
038 5123	\$40.54
038 5124	\$40.54
038 5125	\$40.54
038 5126	\$40.54
038 5127	\$40.54
038 5128	\$40.54
038 5129	\$40.54
038 5130	\$40.54
038 5131	\$40.54
038 5132	\$40.54
038 5133	\$40.54
038 5134	\$40.54
038 5135	\$40.54
038 5136	\$40.54
038 5137	\$40.54

Total Assessment Collected:
 \$2,999.96

2001/2002
Assessment
 \$40.54

GEORGE STILLMAN
Director

Administration
Engineering
Development Services
Transit
Facilities Services
Road Maintenance
Landfill



Public Works

STANISLAUS COUNTY

ENGINEER'S REPORT FOR COUNTY SERVICE AREA NO. 10 FISCAL YEAR 2001/2002

County Service Area No. 10 (CSA No. 10) was established in October, 1990, to provide extended storm drainage, park, and streetscape maintenance, and extended Sheriff and library services. The boundary of CSA No. 10 is shown on Exhibits A1 thru A7 that are attached hereto and made a part of this Engineer's Report.

The extended services only provide a special benefit to the parcels within CSA No. 10, therefore, no general benefit has been assigned.

Proposition 218 took effect on July 1, 1997, and requires an assessment ballot procedure in order to increase the annual assessment. Since the Fiscal Year 2001/2002 annual assessment is the same as in Fiscal Year 2000/2001, it is in compliance with Proposition 218.

FISCAL YEAR 2001/2002 ANNUAL ASSESSMENT:

Single Family Lot	\$112.19/parcel
Undeveloped Residential	\$52.29/acre + \$2.42/parcel
Undeveloped Ind/Com	\$39.71/acre + \$2.42/parcel

The annual assessment will generate \$301,545, which will be distributed as follows:

Storm Drainage	\$ 15,894
Parks	102,568
Sheriff	177,788
Administration	<u>5,295</u>
	\$301,545

Landmark Business Center No. 2 (Storm Drainage Only)
\$1,500 divided by 32.82 acres = \$45.70/acre

The parcels subject to the annual assessment are listed on Exhibit B that is attached hereto and made a part of this Engineer's Report.

April 3, 2001

GEORGE STILLMAN, DIRECTOR
Stanislaus County Department of Public Works



(EngrReport.csa10-2001-02.rc)

Exhibit "B"

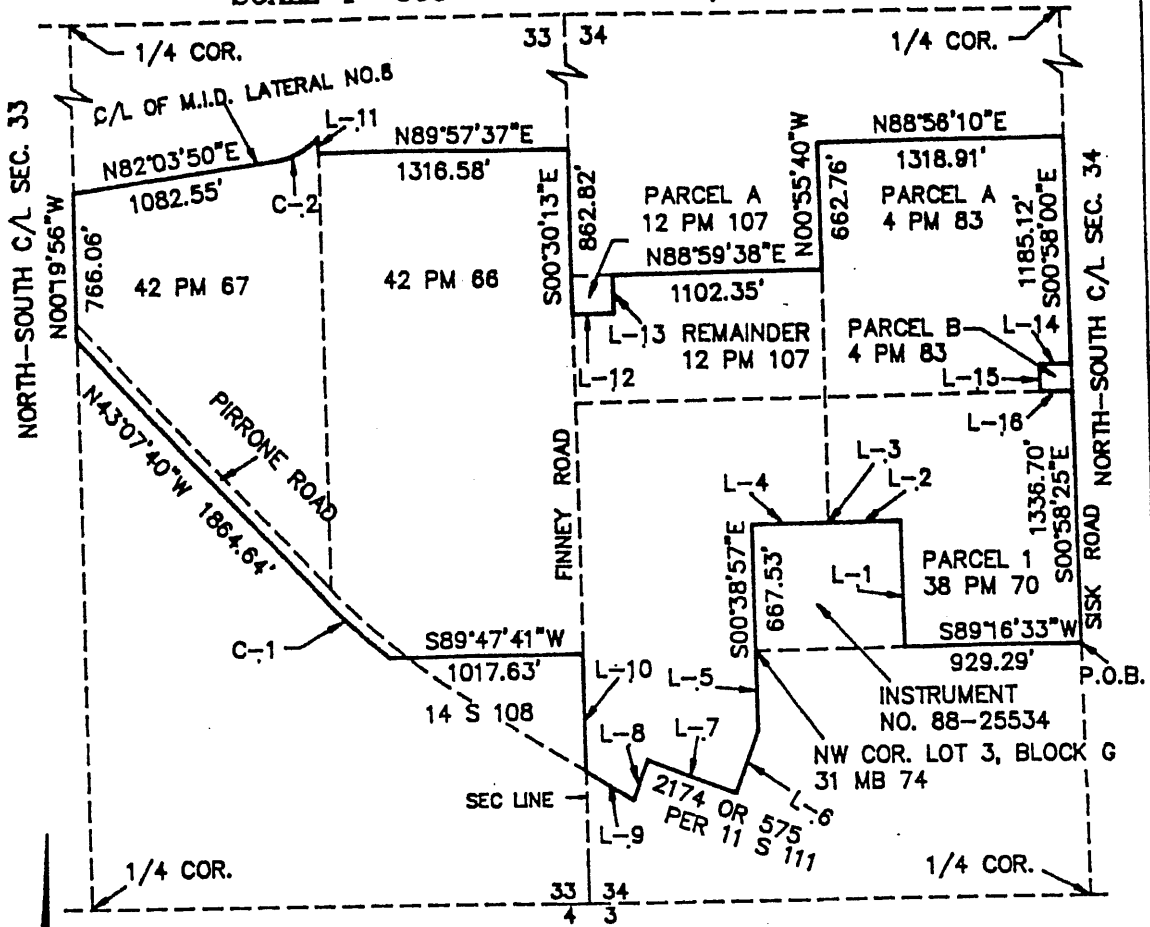
COUNTY SERVICE AREA NO. 10 - SALIDA
FISCAL YEAR 2001/2002

The Assessor's Parcels listed below are subject to the Fiscal Year 2001/2002 annual assessment:

* Inclusive		* Inclusive		* Inclusive	
003-14-07	\$383.64	135-43-06	\$35.32	136-12-01 thru 37*	\$112.19
003-14-08	\$35.78	135-43-07	\$35.32	136-13-01 thru 46*	\$112.19
003-14-09	\$56.82	135-43-08	\$45.92	136-14-01 thru 03*	\$112.19
135-01-32 thru 81*	\$112.19	135-43-09	\$46.36	136-14-06 thru 14*	\$112.19
135-11-01	\$112.19	135-43-10	\$46.36	136-14-37 thru 53*	\$112.19
135-11-02	\$112.19	135-43-11	\$46.80	136-14-70 thru 89*	\$112.19
135-11-05	\$112.19	135-43-12	\$46.36	136-14-92	\$112.19
135-11-07	\$112.19	135-43-13	\$91.82	136-14-93	\$112.19
135-11-08	\$112.19	135-43-20	\$112.12	136-15-01 thru 70*	\$112.19
135-11-10 thru 15*	\$112.19	135-43-21	\$0.00	136-16-01 thru 48*	\$112.19
135-11-17 thru 51*	\$112.19	135-43-24	\$63.56	136-18-02	\$55.23
135-11-53 thru 57*	\$112.19	135-43-25	\$63.12	136-18-03 thru 64*	\$112.19
135-11-58	\$0.00	135-43-26	\$0.00	136-23-02 thru 98*	\$112.19
135-12-01 thru 58*	\$112.19	135-43-27	\$51.20	136-24-01 thru 73*	\$112.19
135-13-01 thru 74*	\$112.19	135-43-28	\$127.12	136-26-01 thru 09*	\$112.19
135-15-01 thru 23*	\$112.19	135-43-30	\$31.78	136-26-11 thru 20*	\$112.19
135-15-28 thru 68*	\$112.19	135-43-31	\$100.64	136-26-23 thru 79*	\$112.19
135-15-71 thru 74*	\$112.19	135-43-32	\$316.04	136-26-81	\$112.19
135-16-01 thru 49*	\$112.19	135-43-33	\$158.92	136-27-01 thru 53*	\$112.19
135-18-01 thru 58*	\$112.19	135-54-01 thru 55*	\$112.19	136-27-55 thru 97*	\$112.19
135-19-01	\$93.40	136-03-01	\$0.00	136-28-01 thru 90*	\$112.19
135-19-03 thru 73*	\$112.19	136-04-01 thru 48*	\$112.19	136-28-92	\$112.19
135-20-01 thru 48*	\$112.19	136-05-02	\$0.00	136-29-01	\$112.19
135-20-50 thru 94*	\$112.19	136-05-04 thru 53*	\$112.19	136-29-04 thru 79*	\$112.19
135-23-01 thru 88*	\$112.19	136-05-57	\$0.00	136-29-82	\$112.19
135-24-03	\$0.00	136-05-58	\$0.00	136-29-83	\$112.19
135-24-04	\$0.00	136-06-01 thru 47*	\$112.19	136-30-01 thru 19*	\$112.19
135-25-01 thru 65*	\$112.19	136-08-21	\$42.13	136-30-22 thru 61*	\$112.19
135-26-01 thru 79*	\$112.19	136-08-31	\$358.62	136-30-63	\$112.19
135-27-01 thru 45*	\$112.19	136-08-32	\$0.00	136-30-64	\$112.19
135-28-01	\$0.00	136-08-35	\$197.00	136-31-01 thru 56*	\$112.19
135-28-05	\$0.00	136-09-04 thru 13*	\$112.19	136-34-01 thru 66*	\$112.19
135-31-01 thru 40*	\$112.19	136-09-16 thru 18*	\$112.19	135-35-01 thru 06*	\$18.27
135-32-01 thru 95*	\$112.19	136-09-22 thru 40*	\$112.19	136-35-08	\$42.92
135-33-01 thru 18*	\$112.19	136-09-43 thru 48*	\$112.19	136-35-10	\$320.50
135-33-19	\$0.00	136-10-01 thru 45*	\$112.19	136-35-11	\$89.78
135-34-01 thru 37*	\$112.19	136-10-50 thru 75*	\$112.19	136-36-01 thru 88*	\$112.19
135-35-01 thru 64*	\$112.19	136-10-77 thru 79*	\$112.19	136-37-01	\$320.89
135-36-01 thru 52*	\$112.19	136-10-81	\$112.19	136-38-01	\$523.23
135-37-01 thru 57*	\$112.19	136-11-02	\$0.00		
135-43-04	\$40.62	136-11-08	\$0.00		
135-43-05	\$40.62	136-11-09 thru 30*	\$112.19		

EXHIBIT A1

A PORTION OF SECTIONS 33 AND 34, T2S, R8E, MDM
 COUNTY OF STANISLAUS, CALIFORNIA
 SCALE 1"=800' FEBRUARY, 1990



LINE	DIRECTION	DISTANCE
L-1	N00°55'49"W	668.32'
L-2	S89°16'33"W	391.00'
L-3	N00°55'49"W	0.41'
L-4	S89°06'10"W	396.79'
L-5	S00°38'57"E	416.96'
L-6	S20°51'32"W	350.64'
L-7	N69°08'20"W	494.00'
L-8	S20°51'40"W	222.71'
L-9	N58°21'53"W	294.13'
L-10	N00°27'01"W	613.70'
L-11	S00°30'18"E	84.91'
L-12	N88°59'38"E	217.00'
L-13	N00°53'20"W	201.00'
L-14	S89°03'05"W	170.00'
L-15	S00°58'00"E	143.00'
L-16	N89°03'05"E	170.00'

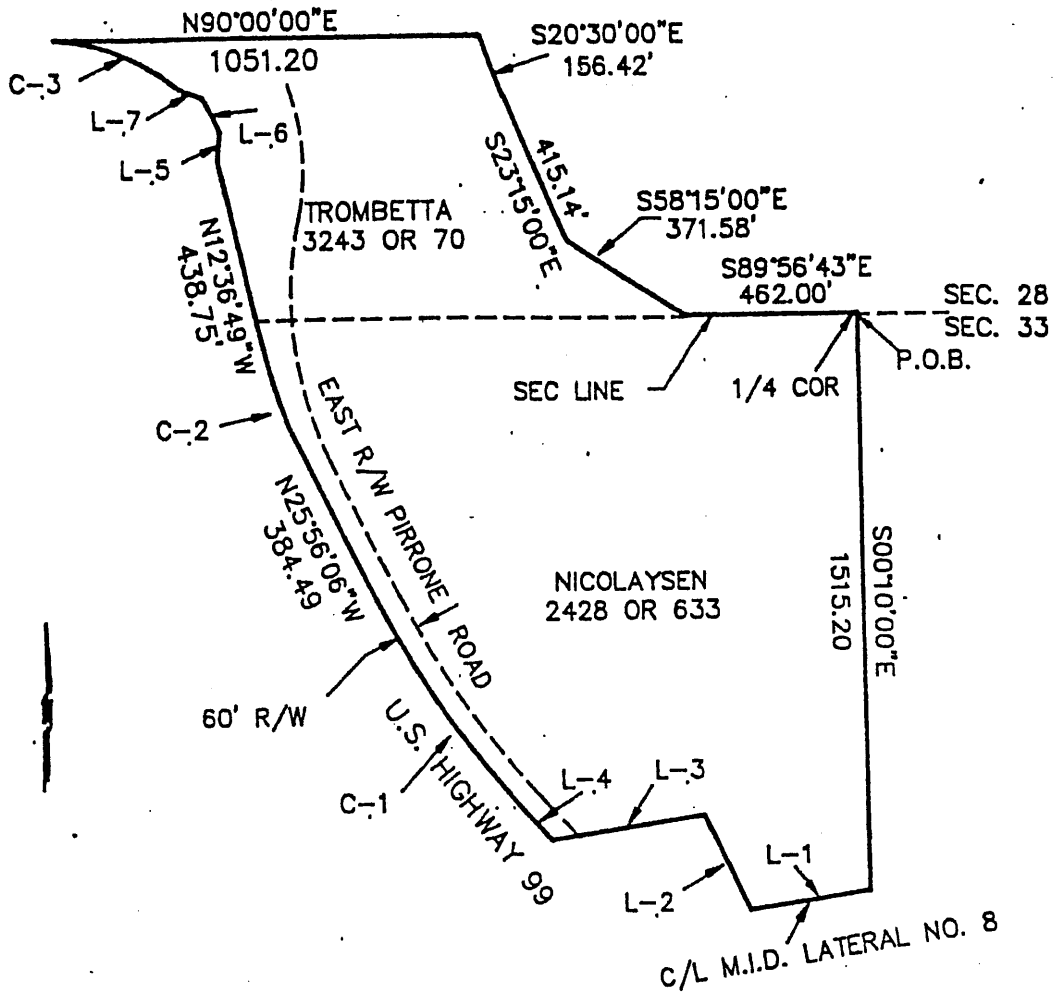
CURVE	RADIUS	LENGTH	CHORD	BEARING	DELTA
C-1	3895.00'	488.28'	487.96'	N46°43'09"W	07°10'58"
C-2	402.18'	274.07'	268.80'	N62°32'28"E	39°02'44"

VAIL
 ENGINEERING CORPORATION
 ENGINEERS ARCHITECTS
 PLANNERS SURVEYORS

EXHIBIT B1
 SERVICE AREA NO. 10-SALIDA
 SUB-AREA NO. 1
 COUNTY OF STANISLAUS

CALC'D BY: _____
 DRAWN BY: RBC
 CHECKED BY: DJS
 DWG NO.: 2424-MR1
 W.O. NO.: 2424.09
 DATE: FEB 1990
 SHEET 1 OF 1 SHEETS

EXHIBIT B2 AZ
A PORTION OF SECTIONS 28 AND 33, T2S, R8E, MDM
COUNTY OF STANISLAUS, CALIFORNIA
SCALE 1"=400' FEBRUARY, 1990



LINE	DIRECTION	DISTANCE
L-1	S81°47'00"W	320.57'
L-2	N25°11'00"W	277.67'
L-3	S81°33'00"W	421.02'
L-4	N43°07'40"W	107.90'
L-5	N06°54'32"E	73.02'
L-6	N26°57'18"W	100.00'
L-7	N69°42'43"W	65.02'

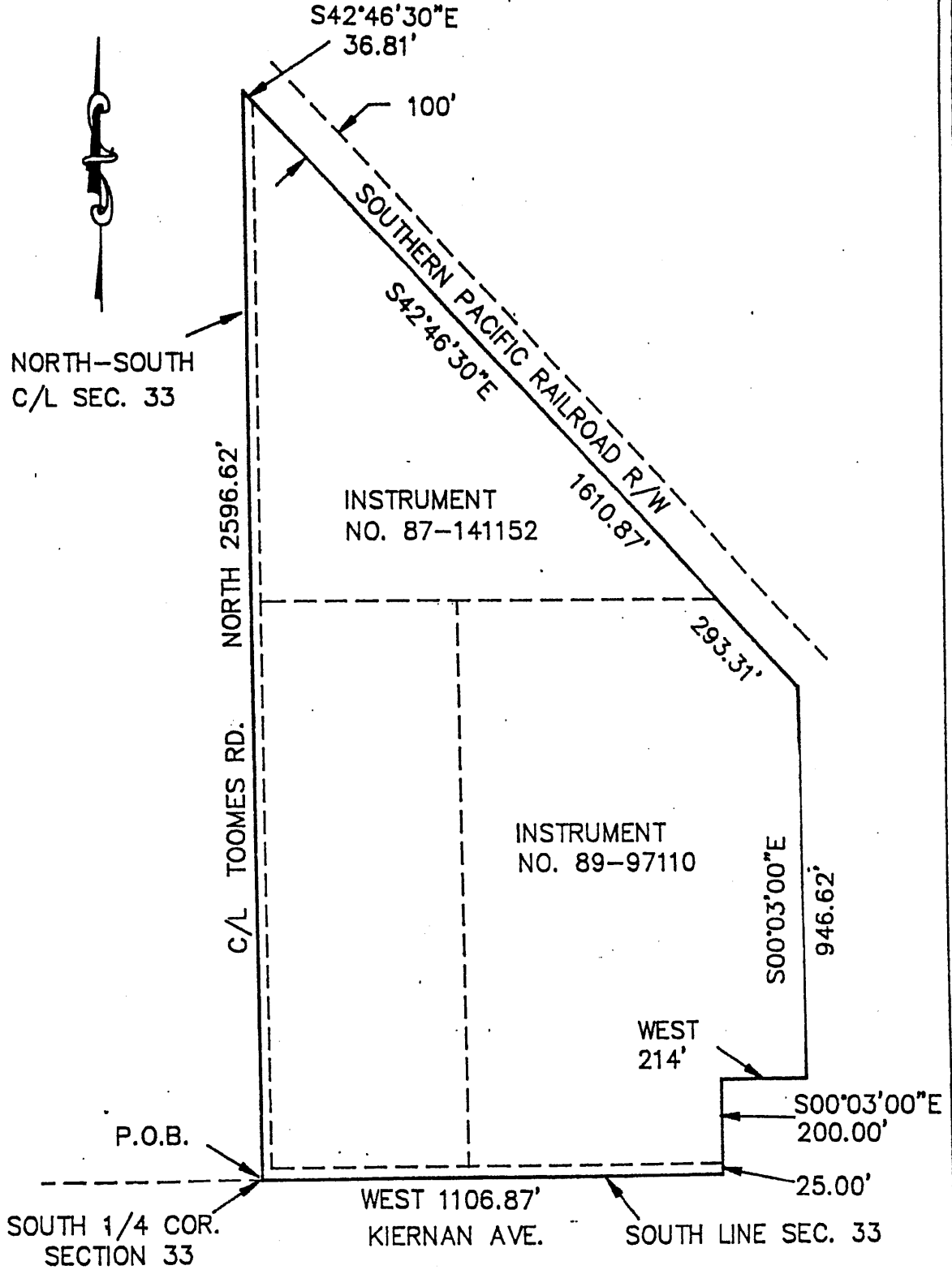
CURVE	RADIUS	LENGTH	CHORD	BEARING	DELTA
C-1	2230.00'	669.21'	666.70'	N34°31'53"W	17°11'34"
C-2	1935.00'	410.70'	409.93'	N19°41'20"W	12°09'39"
C-3	565.00'	280.78'	277.90'	N63°41'20"W	28°28'25"

VAIL
ENGINEERING CORPORATION
 ENGINEERS ARCHITECTS
 PLANNERS SURVEYORS

EXHIBIT B2
SERVICE AREA NO. 10-SALIDA
SUB-AREA NO. 2
COUNTY OF STANISLAUS

CALCED BY: _____
 DRAWN BY: R.B.C.
 CHECKED BY: D.J.S.
 DWG: 2424-MR2
 W.O. NO.: 2424.09
 DATE: JULY 1990
 SHEET 1 OF 1 SHEETS

EXHIBIT ~~B3~~ A3
 A PORTION OF SECTION 33, T2S, R8E, MDM
 COUNTY OF STANISLAUS, CALIFORNIA
 SCALE 1"=300' FEBRUARY, 1990

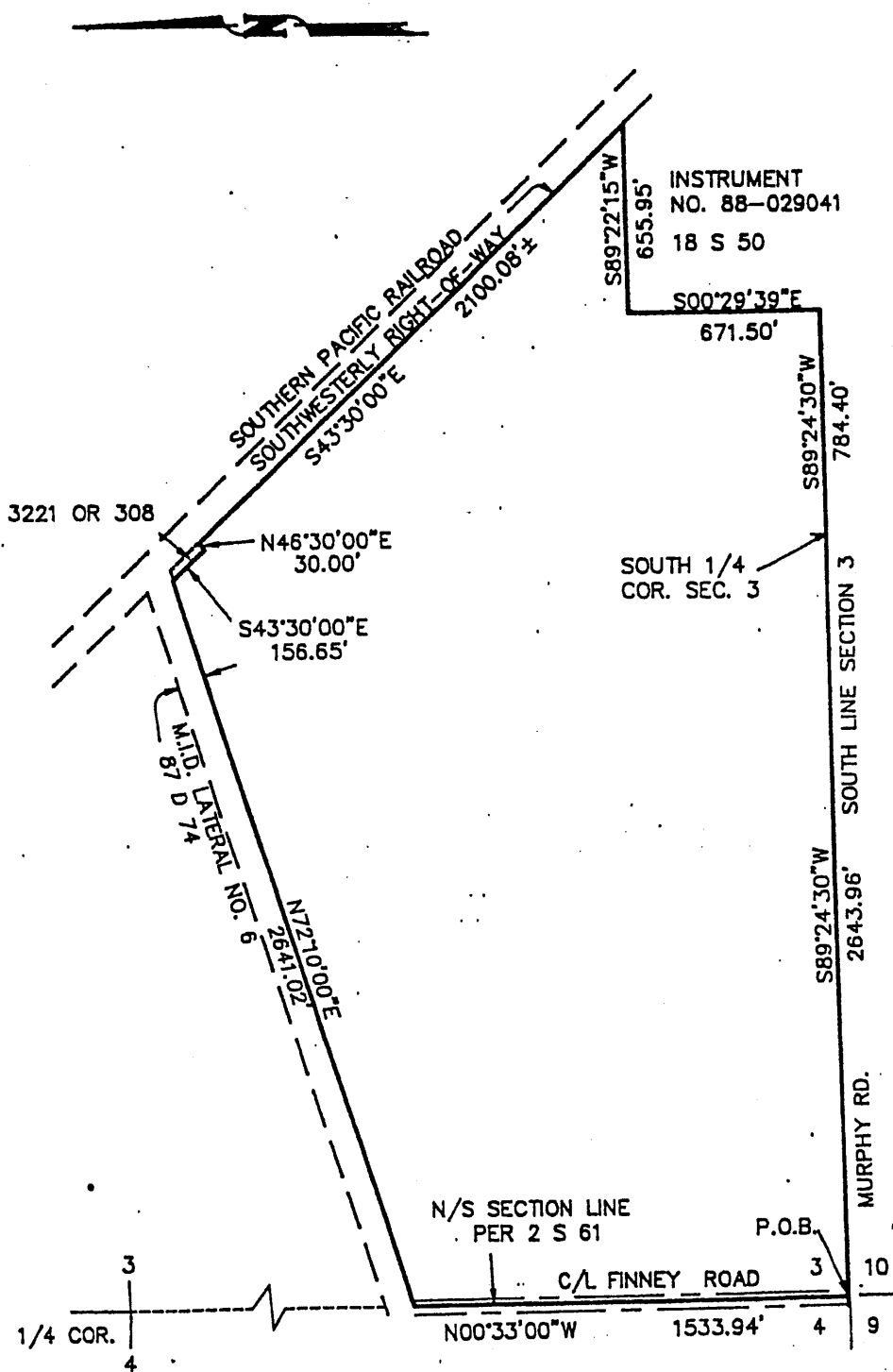


VAIL
 ENGINEERING
 CORPORATION
 ENGINEERS ARCHITECTS

EXHIBIT B3
 SERVICE AREA NO. 10-SALIDA
 SUB-AREA NO. 3
 COUNTY OF STANISLAUS

CALCED BY: _____
 DRAWN BY: R.B.G.
 CHECKED BY: D.J.S.
 DWG: 2424-MR3
 P.L. NO.: 2424.09
 DATE: FEB. 1990

EXHIBIT B4
A PORTION OF SECTIONS 3&4, T3S, R6E, MDM
COUNTY OF STANISLAUS, CALIFORNIA
SCALE 1"=500' JUNE, 1990

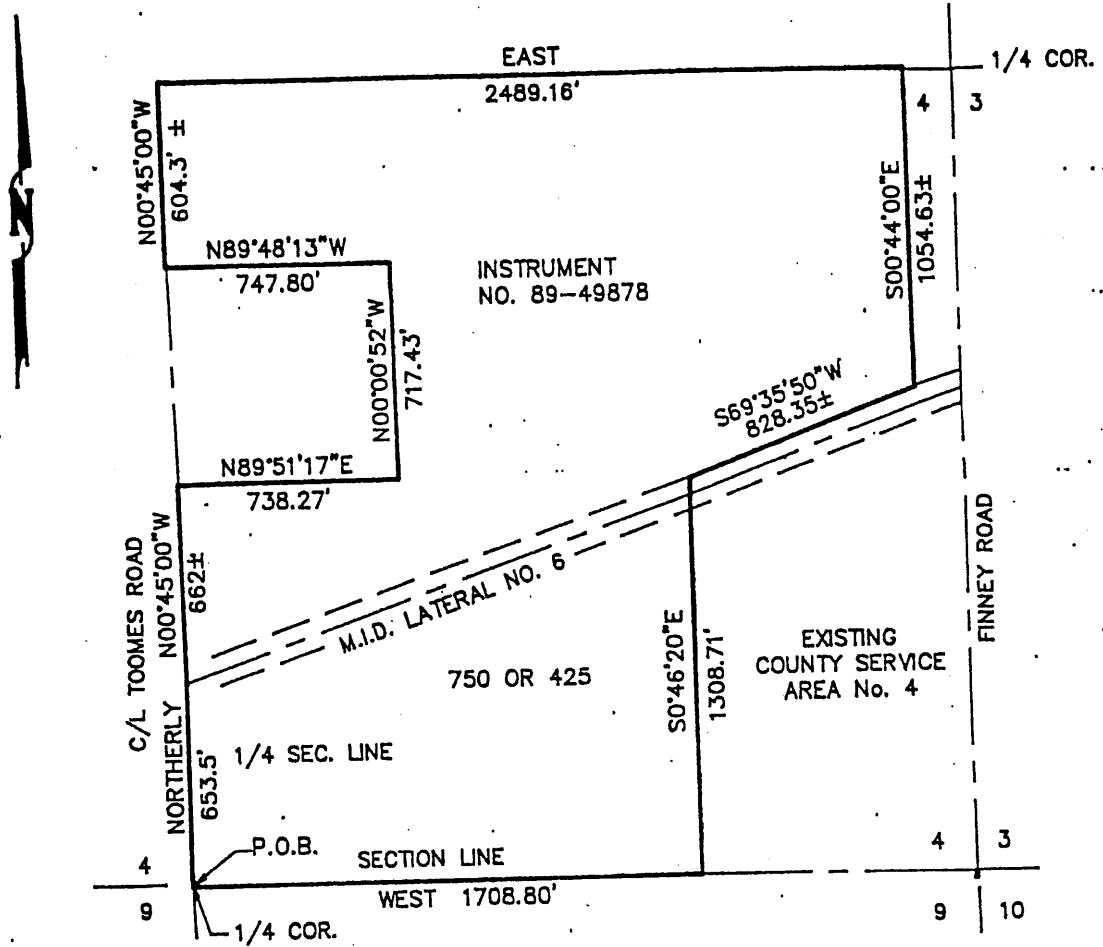


VAIL
ENGINEERING CORPORATION
 ENGINEERS ARCHITECTS
 PLANNERS SURVEYORS

EXHIBIT B4
SERVICE AREA NO. 10-SALIDA
SUB-AREA NO. 4
COUNTY OF STANISLAUS

CALCED BY: _____
 DRAWN BY: RBC
 CHECKED BY: DJS
 DWG NO.: 2424-MR4
 W.O. NO.: 2424.09
 DATE: JUNE 1990
 SHEET 1 OF 1 SHEETS

EXHIBIT ~~B5~~ A5
 A PORTION OF SECTION 4, T3S, R8E, MDM
 COUNTY OF STANISLAUS, CALIFORNIA
 SCALE 1"=500' AUGUST, 1990

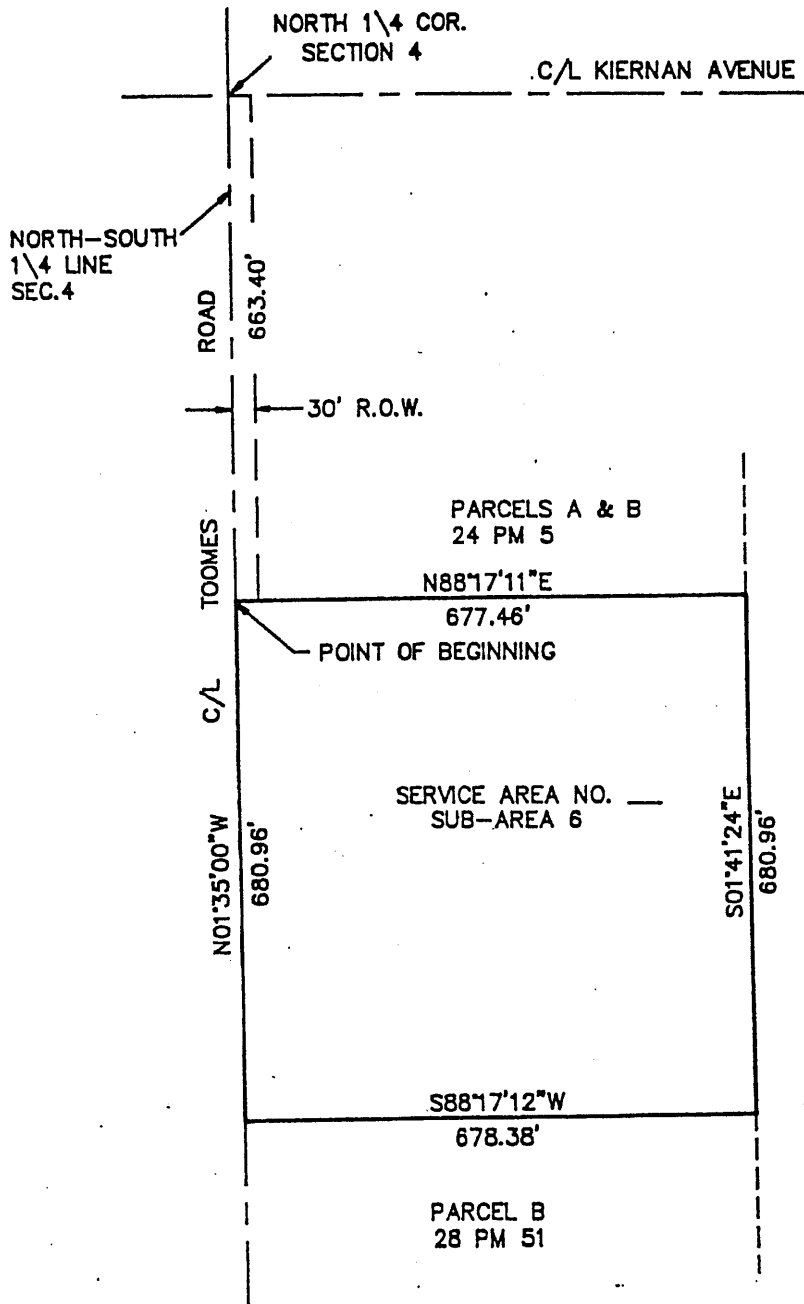


VAIL
 ENGINEERING CORPORATION
 ENGINEERS PLANNERS ARCHITECTS SURVEYORS

EXHIBIT B5
 SERVICE AREA NO. 10-SALIDA
 SUB-AREA 5
 COUNTY OF STANISLAUS

CALCED BY: _____
 DRAWN BY: RBC
 CHECKED BY: DJS
 DWG: 2424-MR5
 W.O. NO.: 2424.09
 DATE: AUGUST, 1990
 SHEET 1 OF 1 SHEETS

EXHIBIT ~~B6~~ A6
 A PORTION OF SECTION 4, T3S, R8E, MDM
 COUNTY OF STANISLAUS, CALIFORNIA
 SCALE 1"=200' FEBRUARY, 1990



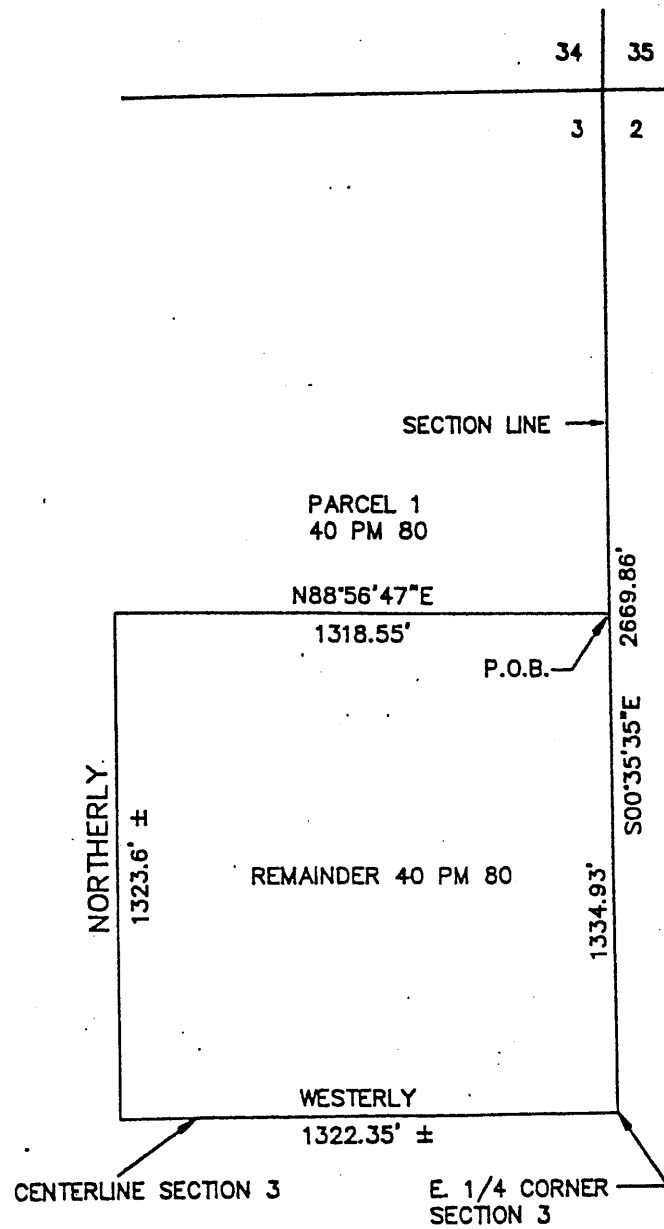
VAIL

ENGINEERING CORPORATION
 ENGINEERS ARCHITECTS
 PLANNERS SURVEYORS

EXHIBIT B6
 SERVICE AREA NO. 10-SALIDA
 SUB-AREA 6
 COUNTY OF STANISLAUS

CALCED BY: D.J.S.
 DRAWN BY: R.B.C.
 CHECKED BY: D.J.S.
 DWG NO.: 2424-MR6
 W.O. NO.: 2424.09
 DATE: FEB. 1990
 SHEET 1 OF 1 SHEETS

EXHIBIT ~~B~~ A7
 A PORTION OF SECTION 3, T3S, R8E, MDM
 COUNTY OF STANISLAUS, CALIFORNIA
 SCALE 1"=400' APRIL, 1990



VAIL

ENGINEERING CORPORATION

ENGINEERS ARCHITECTS
 PLANNERS SURVEYORS

EXHIBIT B7
 SERVICE AREA NO. 10-SALIDA
 SUB-AREA 7
 COUNTY OF STANISLAUS

CALCED BY: D.J.S.

DRAWN BY: R.B.C.

CHECKED BY: D.J.S.

DWG : 2424-MR7

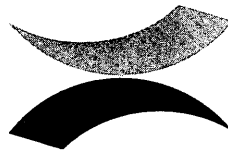
W.C. NO. : 2424.20

DATE: APRIL 1990

SHEET 1 OF 1 SHEETS

GEORGE STILLMAN
Director

Administration
Engineering
Development Services
Transit
Facilities Services
Road Maintenance
Landfill



Public Works

STANISLAUS COUNTY

COUNTY SERVICE AREA NO. 11 ANNUAL ENGINEER'S REPORT FISCAL YEAR 2001/2002

County Service Area No. 11 (CSA 11) was established in April, 1991, to provide extended storm drainage to the Gilbert Road subdivision. The boundary of CSA 11 is shown on Exhibit "A" that is attached hereto and made a part of this Engineer's Report.

Government Code Section 25210.77(A) requires that a written report containing a description of each parcel of real property receiving the particular extended service and the amount of the assessment for each parcel be prepared once a year and filed with the Clerk of the Board of Supervisors.

There are eight parcels within CSA 11, but only those six parcels with Gilbert Road frontage receives benefit from the extended storm drainage. The extended storm drainage only provides a special benefit to the parcels within CSA 11, therefore, no general benefit has been assigned.

The formula that is being used to calculate the assessment is the cost to grade the road shoulder divided by the lineal feet of Gilbert Road frontage within CSA 11. This per lineal foot cost is then multiplied by the number of lineal feet of the individual parcel. This is the same formula that has been use since CSA No. 11 was formed.

The CSA 11 Budget for Fiscal Year 2001/2002 is as follows:

DESCRIPTION	AMOUNT
Budget Item #1: Shoulder grading (1,807 lineal feet)	\$300.00

FISCAL YEAR 2001/2002 ASSESSMENT CALCULATION

Improvement costs	\$ 0.00
Operation & Maintenance costs	<u>300.00</u>
Total Costs	\$300.00

2001/2002 Assessment = $\$300.00 \div 1,807$ lineal feet = \$0.166 per lineal foot

2000/2001 Assessment = \$0.166 per lineal foot

Proposition 218 took effect on July 1, 1997, and requires an assessment ballot procedure in order to increase assessment. Since there is no increase in the assessment, the Fiscal Year 2001/2002 assessment is in compliance with Proposition 218.

COUNTY SERVICE AREA NO. 11
ANNUAL ENGINEER'S REPORT
FISCAL YEAR 2001/2002

The parcels subject to the assessment are listed on Exhibit "B" that is attached hereto and made a part of this Engineer's Report.



GEORGE STILLMAN, DIRECTOR
Stanislaus County Department of Public Works

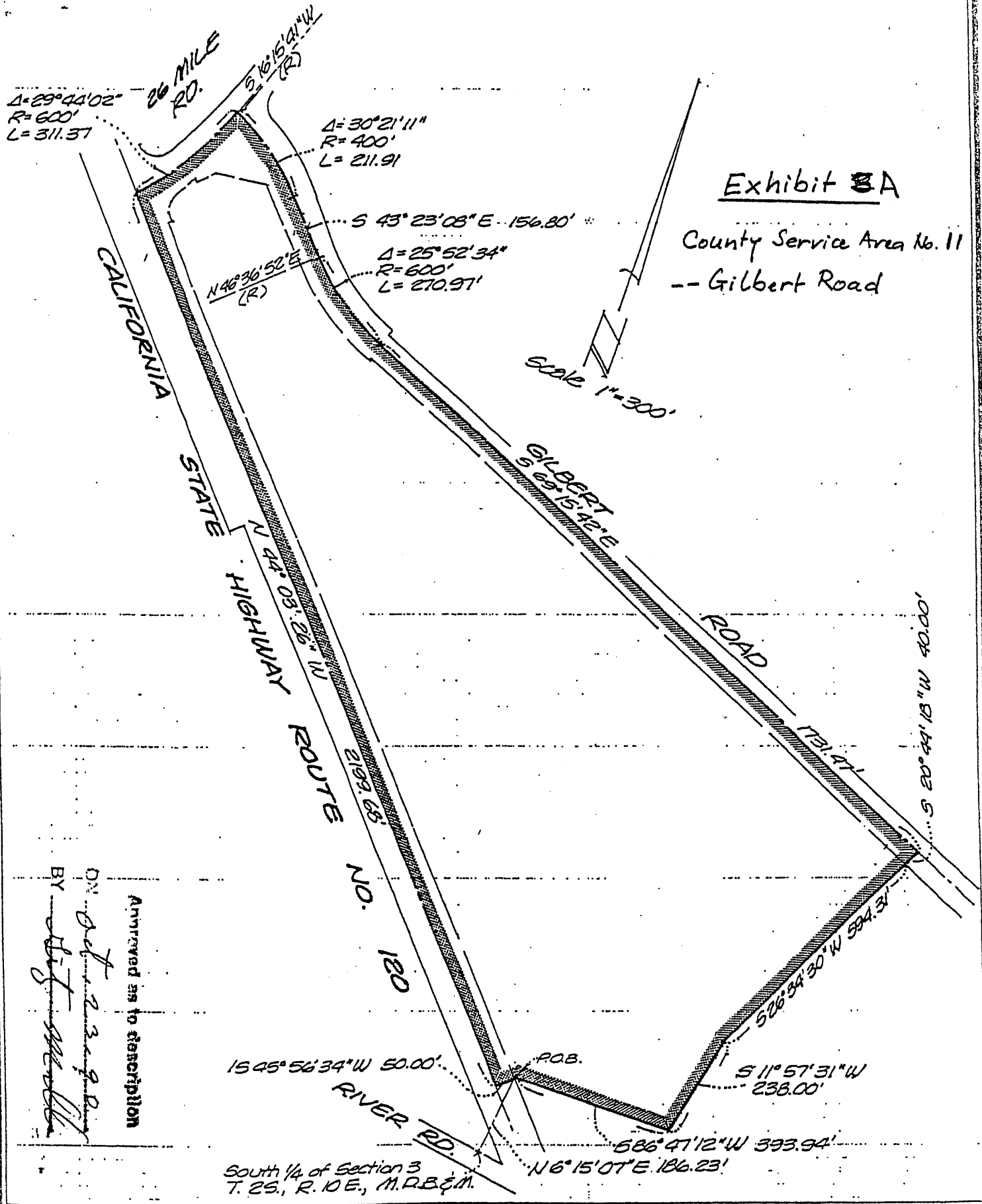
April 3, 2001



Exhibit 3A

County Service Area No. 11
 -- Gilbert Road

Scale 1"=300'



Approved as to description
 ON JUL 23 1990
 BY *[Signature]*

1545°56'34"W 50.00'
 RIVER RD.
 South 1/4 of Section 3
 T. 25., R. 10E., M.R.B.&M.
 ROB.
 586°47'12"W 393.94'
 N 6°15'07"E 186.23'
 526°54'30"W 594.31'
 S 11°57'31"W 238.00'

BY	<i>R</i>
DATE	JULY 20
SHT. OF	



THOMPSON-HYSELL ENGINEERS
 1016 12TH ST. - MODESTO, CA 95354
 (209) 521-8986

COUNTY SERVICE AREA NO. 11
FISCAL YEAR 2001/2002 ASSESSMENT LISTING

EXHIBIT "B"

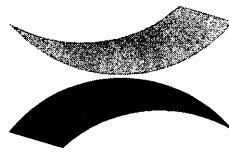
<u>Assessor's Parcel No.</u>	<u>Lineal Feet</u>	<u>2001/2002 Assessment</u>
0068337	411	\$68.23
0068339	150	\$24.90
0068340	150	\$24.90
0068341	150	\$24.90
0068343	283	\$46.98
0068345	663	\$110.06
0068346	0	\$0.00
0068347	0	\$0.00

2001/2002
Assessment
Per LF
\$0.166

Total Assessment Collected:
\$299.96

GEORGE STILLMAN
Director

Administration
Engineering
Development Services
Transit
Facilities Services
Road Maintenance
Landfill



Public Works

STANISLAUS COUNTY

COUNTY SERVICE AREA NO. 12 ANNUAL ENGINEER'S REPORT FISCAL YEAR 2001/2002

County Service Area No. 12 (CSA 12) was established in November, 1991, to provide extended storm drainage to the Peach Blossom Estates subdivision. The boundary of CSA 12 is shown on Exhibit "A" that is attached hereto and made a part of this Engineer's Report.

Government Code Section 25210.77(A) requires that a written report containing a description of each parcel of real property receiving the particular extended service and the amount of the assessment for each parcel be prepared once a year and filed with the Clerk of the Board of Supervisors.

There are 12 parcels within CSA 12, and each parcel receives equal benefit from the extended storm drainage. The extended storm drainage only provides a special benefit to the parcels within CSA 12, therefore, no general benefit has been assigned.

The formula that is being used to calculate the assessment is the total cost to operate and maintain the storm drain system divided equally by the number of parcels within CSA 12. This is the same formula that has been used since CSA 12 was formed.

The CSA 12 Budget for Fiscal Year 2001/2002 is as follows:

DESCRIPTION	AMOUNT
Budget Item #1: Collection system maintenance	\$1,400.00
Budget Item #2: Administration	100.00
Total Cost of Storm Drain Maintenance	\$1,500.00

FISCAL YEAR 2001/2002 ASSESSMENT CALCULATION

Improvement costs	\$ 0.00
Operation & Maintenance costs	<u>1,500.00</u>
Total Costs	\$1,500.00

2001/2002 Assessment = $\$1,500.00 \div 12 \text{ parcels} = \$125.00 \text{ per parcel}$

2000/2001 Assessment = \$125.00 per parcel

Proposition 218 took effect on July 1, 1997, and requires an assessment ballot procedure in order to increase the assessment. Since there is no increase in the assessment, the Fiscal Year 2001/2002 assessment is in compliance with Proposition 218.

COUNTY SERVICE AREA NO. 12
ANNUAL ENGINEER'S REPORT
FISCAL YEAR 2001/2002

The parcels subject to the assessment are listed on Exhibit "B" that is attached hereto and made a part of this Engineer's Report.



GEORGE STILLMAN, DIRECTOR
Stanislaus County Department of Public Works

April 3, 2001



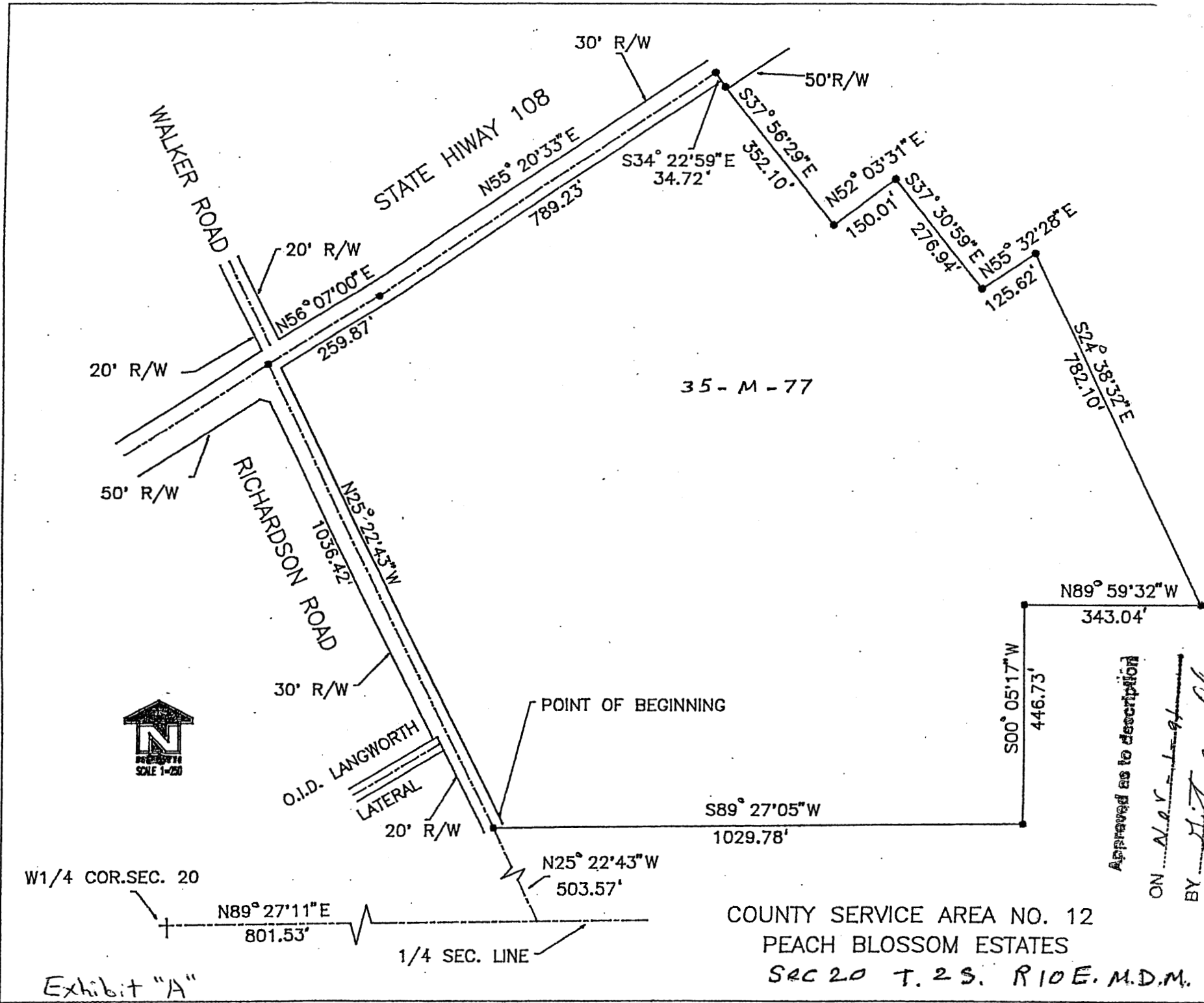


Exhibit "A"

COUNTY SERVICE AREA NO. 12
 PEACH BLOSSOM ESTATES
 SEC 20 T. 2 S. R10 E. M.D.M.

COUNTY SERVICE AREA NO. 12
FISCAL YEAR 2001/2002 ASSESSMENT LISTING

EXHIBIT "B"

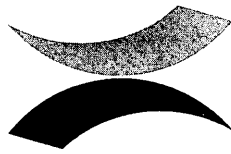
Assessor's Parcel No.	2001/2002 Assessment
062 3301	\$125.00
062 3302	\$125.00
062 3303	\$125.00
062 3304	\$125.00
062 3305	\$125.00
062 3306	\$125.00
062 3307	\$125.00
062 3308	\$125.00
062 3309	\$125.00
062 3310	\$125.00
062 3311	\$125.00
062 3312	\$125.00

2001/2002
Assessment
\$125.00

Total Assessment Collected:
\$1,500.00

GEORGE STILLMAN
Director

Administration
Engineering
Development Services
Transit
Facilities Services
Road Maintenance
Landfill



Public Works

STANISLAUS COUNTY

COUNTY SERVICE AREA NO. 13 ANNUAL ENGINEER'S REPORT FISCAL YEAR 2001/2002

County Service Area No. 13 (CSA 13) was established in November, 1991, to provide extended storm drainage to the La Jolla subdivision. The boundary of CSA 13 is shown on Exhibit "A" that is attached hereto and made a part of this Engineer's Report.

Government Code Section 25210.77(A) requires that a written report containing a description of each parcel of real property receiving the particular extended service and the amount of the assessment for each parcel be prepared once a year and filed with the Clerk of the Board of Supervisors.

There are 28 parcels within CSA 13, and each parcel receives equal benefit from the extended storm drainage. The extended storm drainage only provides a special benefit to the parcels within CSA 13, therefore, no general benefit has been assigned.

The formula that is being used to calculate the assessment is the total cost to operate and maintain the storm drain system divided equally by the number of parcels within CSA 13. This is the same formula that has been used since CSA 13 was formed.

The CSA 13 Budget for Fiscal Year 2001/2002 is as follows:

DESCRIPTION	AMOUNT
Budget Item #1: Basin maintenance	\$1,200.00
Budget Item #2: Collection system maintenance	700.00
Budget Item #3: Administration	<u>100.00</u>
Total Cost of Storm Drain Maintenance	\$2,000.00

FISCAL YEAR 2001/2002 ASSESSMENT CALCULATION

Improvement costs	\$ 0.00
Operation & Maintenance costs	<u>2,000.00</u>
Total Costs	\$2,000.00

2001/2002 Assessment = \$2,000.00 ÷ 28 parcels = \$71.43 per parcel
2000/2001 Assessment = \$71.43 per parcel

Proposition 218 took effect on July 1, 1997, and requires an assessment ballot procedure in order to increase the assessment. Since there is no increase in the assessment, the Fiscal Year 2001/2002 assessment is in compliance with Proposition 218.

COUNTY SERVICE AREA NO. 13
ANNUAL ENGINEER'S REPORT
FISCAL YEAR 2001/2002

The parcels subject to the annual assessment are listed on Exhibit "B" that is attached hereto and made a part of this Engineer's Report.



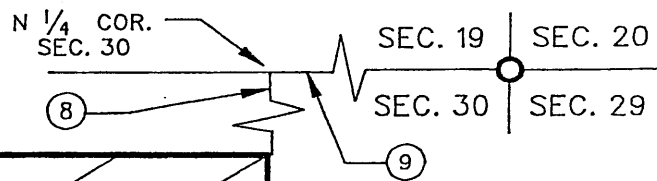
GEORGE STILLMAN, DIRECTOR
Stanislaus County Department of Public Works

April 3, 2001

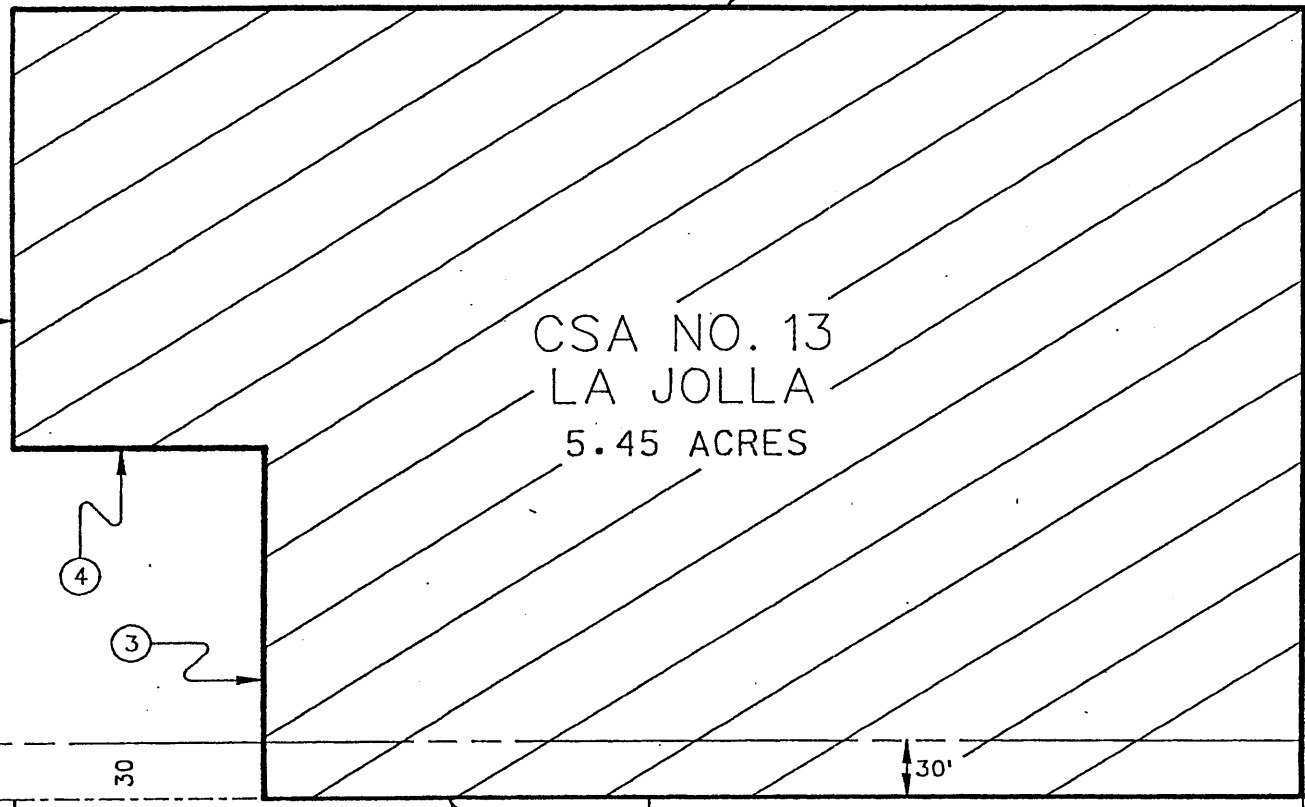


BASIS OF BEARING

THE BEARING N 0° 07' E FOR THE EAST LINE OF THE NORTHWEST QUARTER OF SECTION 30, TOWNSHIP 4 SOUTH, RANGE 10 EAST, MOUNT DIABLO BASE AND MERIDIAN AS SHOWN ON MAP FILED FEBRUARY 4, 1947 IN VOLUME 16 OF MAPS, PAGE 24, STANISLAUS COUNTY RECORDS.



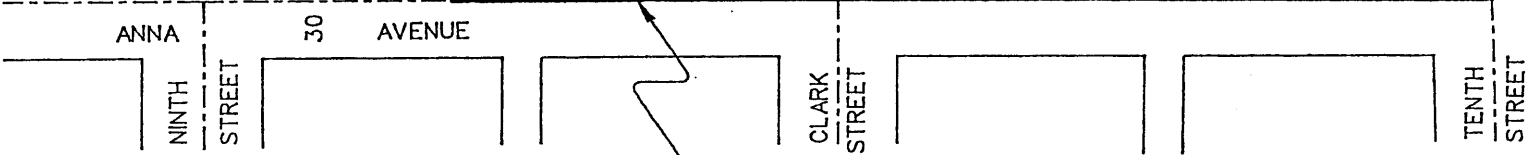
SCALE: 1"=100'



CSA NO. 13
LA JOLLA
5.45 ACRES

PROPOSED
CSA
BOUNDARY

P.O.B. NORTHEAST CORNER OF
TEXERA TRACT, VOLUME
16 OF MAPS, PAGE 29,
STANISLAUS COUNTY
RECORDS.



TEXERA
TRACT

①	S 0° 06' 14" W	40.00'
②	N 89° 47' 30" W	525.04'
③	N 0° 07' 10" E	260.00'
④	N 89° 47' 30" W	125.00'
⑤	N 0° 07' 10" E	155.00'
⑥	S 89° 47' 30" E	649.92'
⑦	S 0° 06' 14" W	375.00'
⑧	S 0° 06' 14" W	948.32'
⑨	S 89° 50' 53" E	2645.03'

LEGEND

- PROPOSED C.S.A. BOUNDARY
- - - ROADWAY CENTERLINE
- · - · - PROPERTY LINE

Exhibit A

ROSS G. STEPHENSON ASSOCIATES, Inc.
ENGINEERING AND SURVEYING
2801 COFFEE ROAD, SUITE B-1
MODESTO, CALIFORNIA 95355-3368
(209) 578-3895
JOB NO. 17-90

COUNTY SERVICE AREA NO. 13
FISCAL YEAR 2001/2002 ASSESSMENT LISTING

EXHIBIT "B"

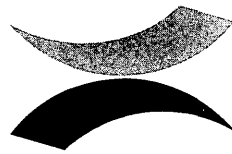
Assessor's Parcel No.	2001/2002 Assessment
045 6468	\$71.43
045 6469	\$71.43
045 6470	\$71.43
045 6471	\$71.43
045 6472	\$71.43
045 6473	\$71.43
045 6474	\$71.43
045 6475	\$71.43
045 6476	\$71.43
045 6477	\$71.43
045 6478	\$71.43
045 6479	\$71.43
045 6480	\$71.43
045 6481	\$71.43
045 6482	\$71.43
045 6483	\$71.43
045 6484	\$71.43
045 6485	\$71.43
045 6486	\$71.43
045 6487	\$71.43
045 6488	\$71.43
045 6489	\$71.43
045 6490	\$71.43
045 6491	\$71.43
045 6492	\$71.43
045 6493	\$71.43
045 6494	\$71.43
045 6495	\$71.43

2001/2002
Assessment
\$71.43

Total Assessment Collected:
\$2,000.04

GEORGE STILLMAN
Director

Administration
Engineering
Development Services
Transit
Facilities Services
Road Maintenance
Landfill



Public Works

STANISLAUS COUNTY

COUNTY SERVICE AREA NO. 14 ANNUAL ENGINEER'S REPORT FISCAL YEAR 2001/2002

County Service Area No. 14 (CSA 14) was established in January, 1993, to provide extended storm drainage. The boundary of CSA 14 is shown on Exhibits "A1", "A2", and "A3" that are attached hereto and made a part of this Engineer's Report.

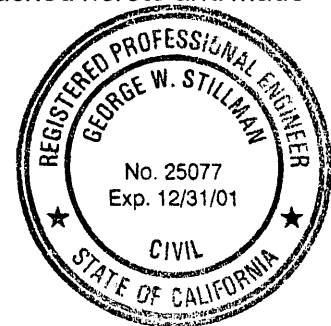
Government Code Section 25210.77(A) requires that a written report containing a description of each parcel of real property receiving the particular extended service and the amount of the assessment for each parcel be prepared once a year and filed with the Clerk of the Board of Supervisors.

There are four parcels within CSA 14, and at this time no extended storm drainage services are being provided. Therefore, the 2001/2002 assessment will be \$0.00 for all parcels. The 2000/2001 annual assessment was also \$0.00.

The parcels subject to the assessment are listed on Exhibit "B" that is attached hereto and made a part of this Engineer's Report.

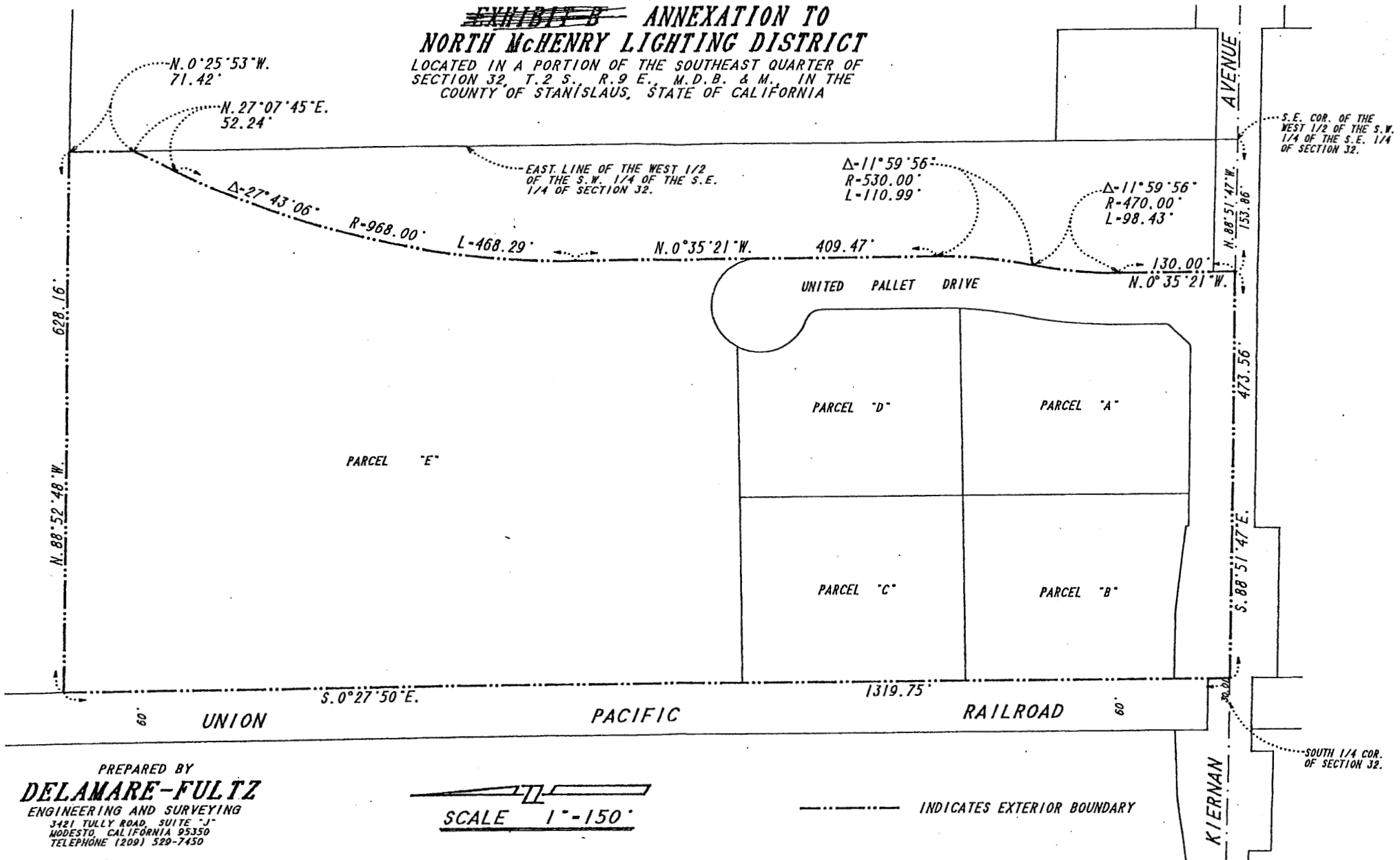
GEORGE STILLMAN, DIRECTOR
Stanislaus County Department of Public Works

April 3, 2001




(EngrReport.csa14-2001-02.rc)

~~EXHIBIT B~~ ANNEXATION TO
NORTH McHENRY LIGHTING DISTRICT
 LOCATED IN A PORTION OF THE SOUTHEAST QUARTER OF
 SECTION 32, T.2 S., R.9 E., M.D.B. & M., IN THE
 COUNTY OF STANISLAUS, STATE OF CALIFORNIA

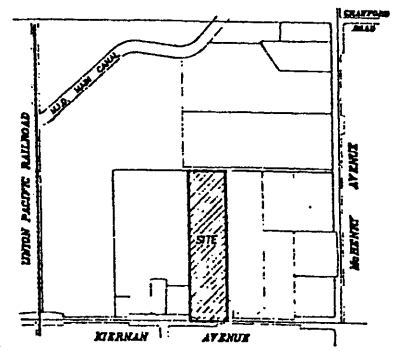
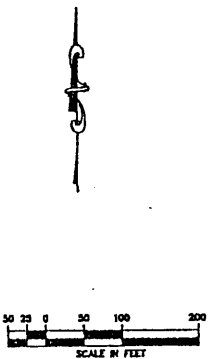
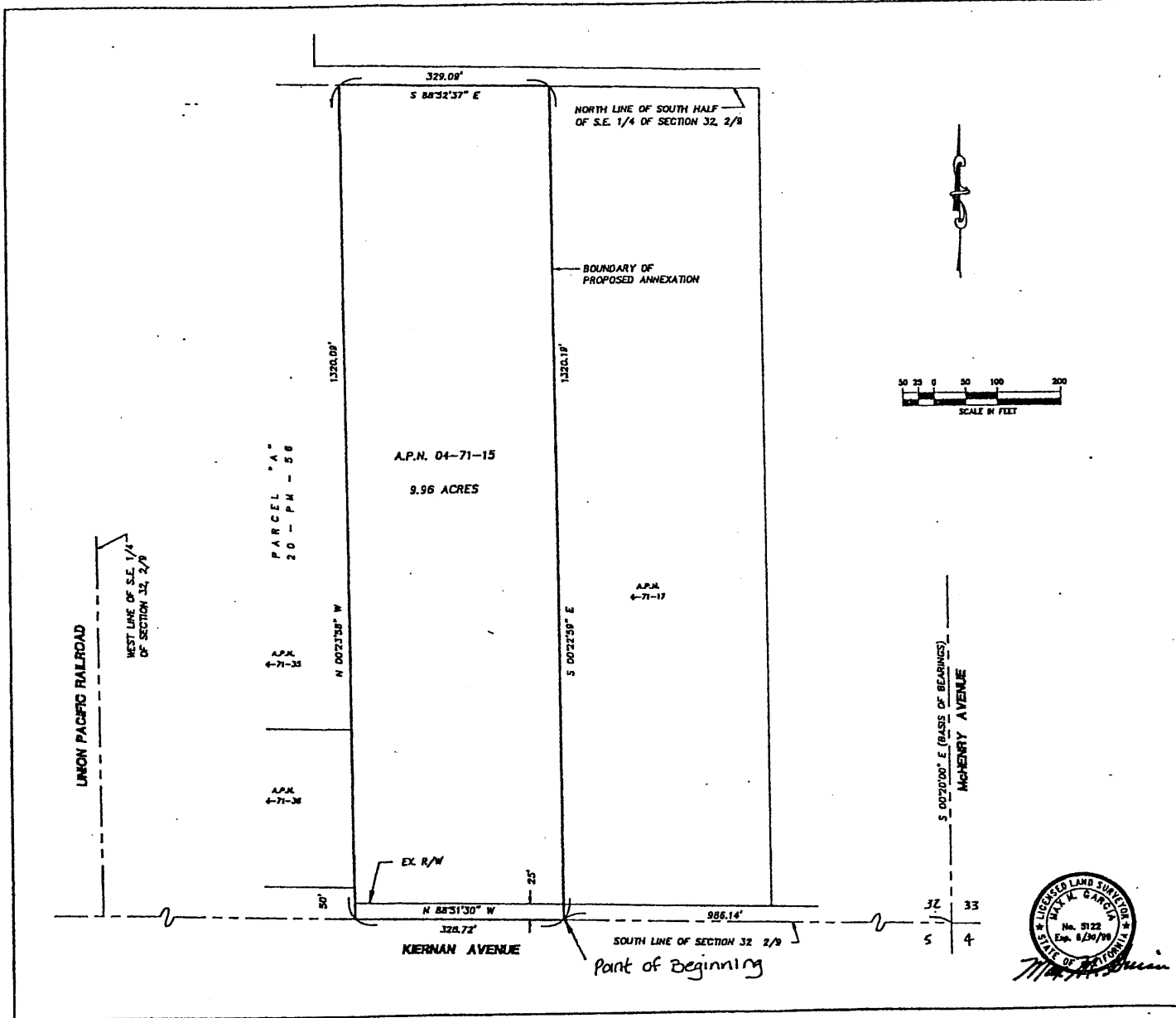


PREPARED BY
DELAMARE-FULTZ
 ENGINEERING AND SURVEYING
 3451 TULLY ROAD SUITE "J"
 MODESTO, CALIFORNIA 95350
 TELEPHONE (209) 529-7450


 SCALE 1"=150'

----- INDICATES EXTERIOR BOUNDARY

Exhibit A1



VICINITY MAP

BASIS OF BEARINGS
 THE BEARING OF SOUTH 00°20'00" EAST FOR THE EAST LINE OF SECTION 32, TOWNSHIP 2 SOUTH, RANGE 9 EAST, MOUNT DIABLO BASE AND MERIDIAN, ALSO BEING THE CENTERLINE OF MOHENRY AVENUE AS SHOWN IN BOOK 20 OF PARCEL MAPS AT PAGE 58, STANISLAUS COUNTY RECORDS.

NOTES

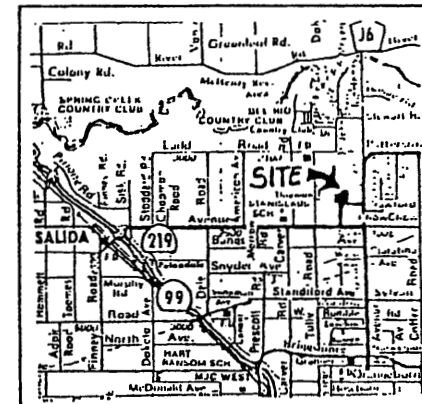
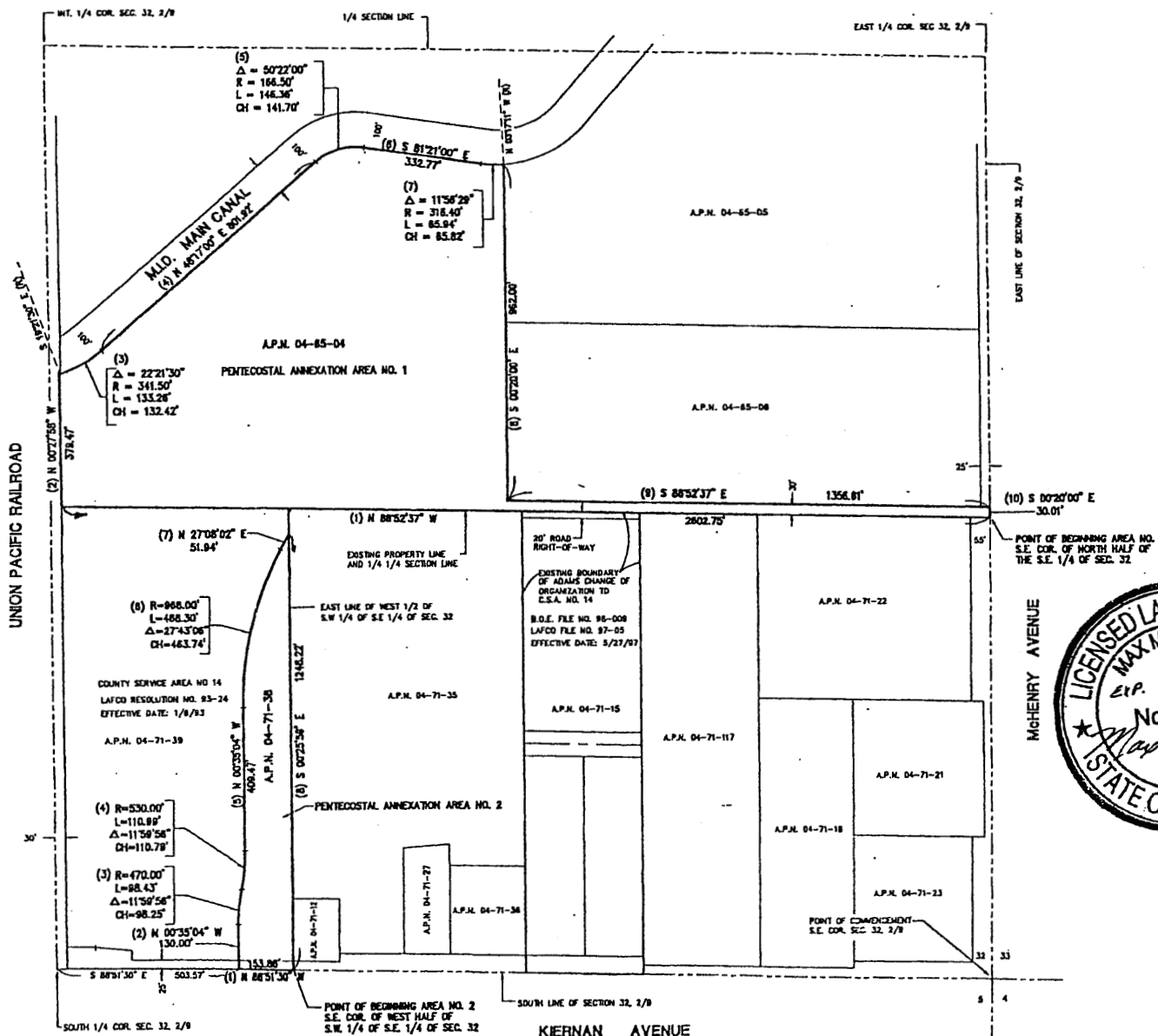
LEW-GARCIA-DAVIS
 GEOGRAPHIC INFORMATION SYSTEMS
 ENGINEERING / SURVEYING / PLANNING
 3641 MITCHELL ROAD, SUITE D, CEPER, CA 95307
 TELEPHONE (925) 526-3360 FAX (925) 536-1378

EXHIBIT "B"
 ANNEXATION TO
 COUNTY SERVICE AREA NO. 14

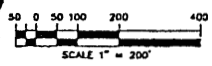


Scale: AS SHOWN	Date: 12/12/98
Drawn by: SORESKICH	1 of 1
Checked by: [Signature]	File No. 94083

Exhibit A2



LEGEND
 (S) COURSE BEARING
 (R) RADIAL BEARING



GARCIA-DAVIS-RINGLER ENGINEERING
 ENGINEERING/SURVEYING/PLANNING
 3841 MITCHELL ROAD, SUITE D, GUNWYCK, CA 94507
 TELEPHONE (925) 836-3300 FAX (925) 836-7370

EXHIBIT "B"
Pentecostal Annexation to County Service Area No. 14
 County of Stanislaus, State of California

Scale: 1" = 200' Date: 12/7/98
 Drawn By: BGS/ANNXK Sheet: 1 of 1
 Checked By: MK
 Checked By: MG, DB Plot No.: 88294

Exhibit A3

COUNTY SERVICE AREA NO. 14
ANNUAL ENGINEER'S REPORT
FISCAL YEAR 2001/2002

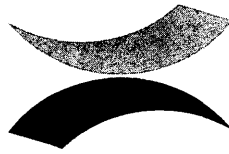
Exhibit "B"

The Assessor's parcels listed below are subject to the Fiscal Year 2001/2002 assessment:

004 6516	\$0.00
004 6517	\$0.00
004 6518	\$0.00
004 6519	\$0.00
004 6520	\$0.00
004 6521	\$0.00
004 6522	\$0.00
004 6523	\$0.00
004 6524	\$0.00
004 6525	\$0.00
004 6526	\$0.00
004 7115	\$0.00
004 7142	\$0.00
004 7143	\$0.00

GEORGE STILLMAN
Director

Administration
Engineering
Development Services
Transit
Facilities Services
Road Maintenance
Landfill



Public Works

STANISLAUS COUNTY

COUNTY SERVICE AREA NO. 15 ANNUAL ENGINEER'S REPORT FISCAL YEAR 2001/2002

County Service Area No. 15 (CSA 15) was established in September, 1996, to provide extended storm drainage to the Patterson Gateway development, and maintain the traffic signals at the Sperry Road/Rogers Road intersection. The boundary of CSA 15 is shown on Exhibit "A" that is attached hereto and made a part of this Engineer's Report.

Government Code Section 25210.77(A) requires that a written report containing a description of each parcel of real property receiving the particular extended service and the amount of the assessment for each parcel be prepared once a year and filed with the Clerk of the Board of Supervisors.

There are 28 parcels within CSA 15, and each parcel receives benefit from the extended storm drainage and traffic signals based on the parcel's net acreage. The extended storm drainage and traffic signals only provides a special benefit to the parcels within CSA 15, therefore, no general benefit has been assigned. Assessor's Parcel No. 021-25-23 and 24 will not receive any benefits until they are developed, therefore, these parcels are not being assessed.

The formula that is being used to calculate the assessment is the total cost to operate and maintain the drainage system and the traffic signals divided equally by the number of net acres within CSA 15. Since Assessor's Parcel No. 021-25-23 and 24 are not receiving any benefit from CSA 15 at this time, their acreage is not included in CSA 15. This is the same formula that has been used since CSA 15 was formed.

The CSA 15 Budget for Fiscal Year 2001/2002 is as follows:

DESCRIPTION	AMOUNT
Budget Item #1: Traffic signal maintenance	\$3,500.00
Budget Item #2: Basin maintenance	3,350.00
Budget Item #3: Collection system maintenance	1,500.00
Budget Item #4: Administration	<u>150.00</u>
Total Operation & Maintenance Cost	\$8,500.00

FISCAL YEAR 2001/2002 ASSESSMENT CALCULATION

Improvement costs	\$ 0.00
Operation & Maintenance costs	<u>8,500.00</u>
Total Costs	\$8,500.00

2001/2002 Assessment = \$8,500.00 ÷ 46.83 net acres = \$181.51 per net acre

2000/2001 Assessment = \$181.51 per net acre

COUNTY SERVICE AREA NO. 15
ANNUAL ENGINEER'S REPORT
FISCAL YEAR 2001/2002

Proposition 218 took effect on July 1, 1997, and requires an assessment ballot procedure in order to increase the assessment. Since there is no increase in the assessment, the Fiscal Year 2001/2002 assessment is in compliance with Proposition 218.

The parcels subject to the assessment are listed on Exhibit "B" that is attached hereto and made a part of this Engineer's Report.



GEORGE STILLMAN, DIRECTOR
Stanislaus County Department of Public Works

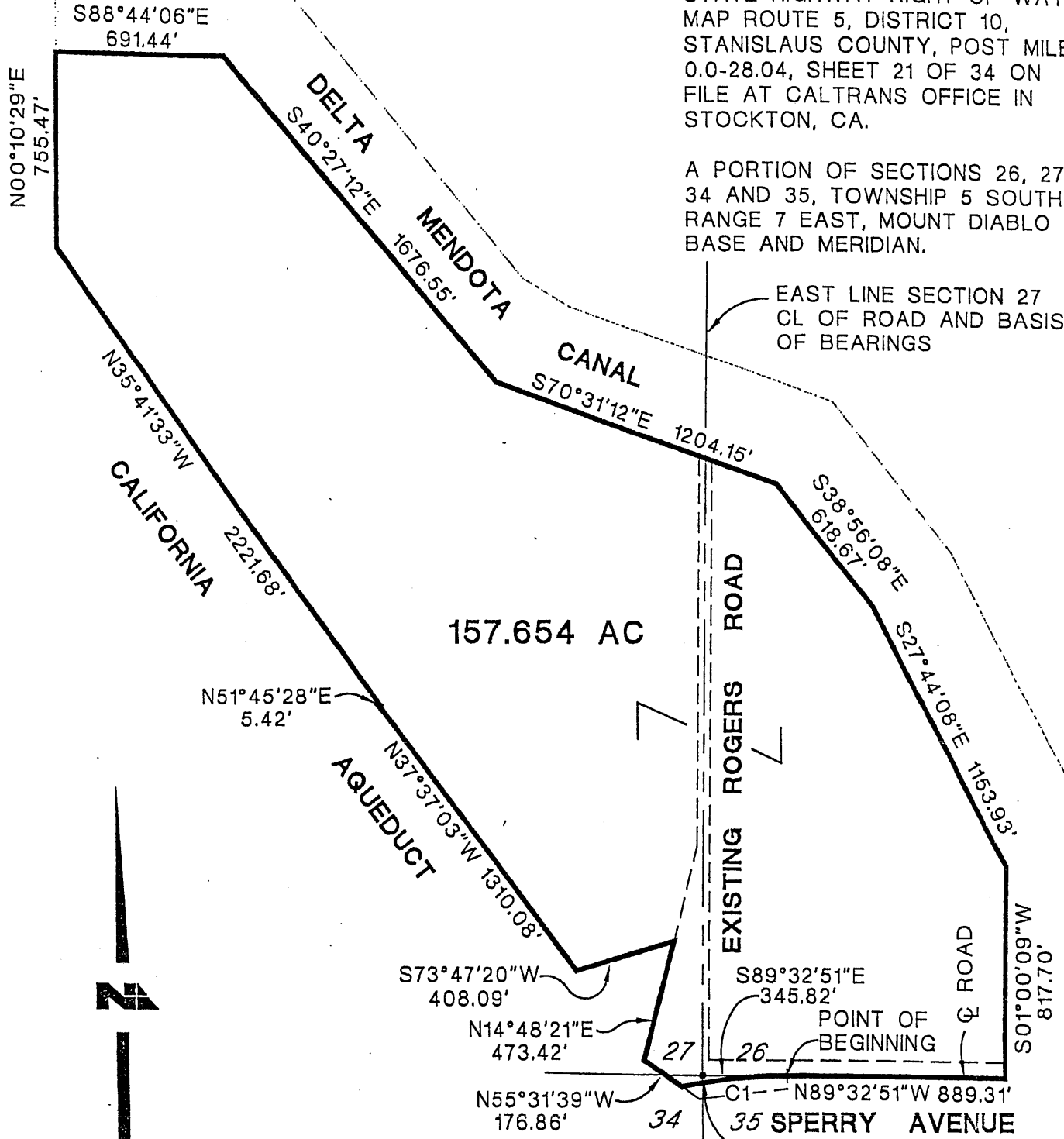
April 3, 2001



CURVE	RADIUS	LENGTH	CHORD	CH.BEARING	DELTA
C1	2200.00'	433.00'	432.30'	S84°48'51"W	11°16'37"

BASIS OF BEARINGS TAKEN FROM STATE HIGHWAY RIGHT OF WAY MAP ROUTE 5, DISTRICT 10, STANISLAUS COUNTY, POST MILE 0.0-28.04, SHEET 21 OF 34 ON FILE AT CALTRANS OFFICE IN STOCKTON, CA.

A PORTION OF SECTIONS 26, 27, 34 AND 35, TOWNSHIP 5 SOUTH, RANGE 7 EAST, MOUNT DIABLO BASE AND MERIDIAN.



EAST LINE SECTION 27
CL OF ROAD AND BASIS
OF BEARINGS

EXISTING ROGERS ROAD

Q ROAD

35 SPERRY AVENUE

POINT OF COMMENCEMENT
SECTION CORNER
FD 2 1/4" DISC IN 14"
SQUARE CONCRETE
STAMPED "CAL DIV HWYS"

SCALE: 1" = 600'

DATE: 04/26/95 TIME: 11:23
SCALE: 1" = 600' T.H.: 49
SERVER: MTS1 SERVICE: ENG
PATH: \MTS06192\20\DRAWING\
DRAWING NAME: ESMTB.DWG
PLOTING VIEW: NONE



NOLTE and ASSOCIATES, Inc.
Engineers / Planners / Surveyors

OGDEN HARTZELL SACRAMENTO SACRAMENTO SAN JOSE SAN JOSE SAN JOSE SAN JOSE SAN JOSE WALNUT CREEK

EXHIBIT "A"

COUNTY SERVICE AREA NO. 15
 FISCAL YEAR 2001/2002 ASSESSMENT LISTING

EXHIBIT "B"

Assessor's Parcel No.	Acres	2001/2002 Assessment
021 2523	0.00	\$0.00
021 2524	0.00	\$0.00
021 2801	3.00	\$544.53
021 2802	1.10	\$199.66
021 2803	2.12	\$384.80
021 2805	0.63	\$114.35
021 2806	1.31	\$237.78
021 2807	3.41	\$618.95
021 2808	2.09	\$379.36
021 2809	1.68	\$304.94
021 2810	1.44	\$261.37
021 2811	1.00	\$181.51
021 2812	0.12	\$21.78
021 2813	1.46	\$265.00
021 2814	1.07	\$194.22
021 2815	1.04	\$188.77
021 2820	0.94	\$170.62
021 2824	1.85	\$335.79
021 2827	2.65	\$481.00
021 2828	1.05	\$190.59
021 2829	1.86	\$337.61
021 2830	2.43	\$441.07
021 2831	6.02	\$1,092.69
021 2832	1.79	\$324.90
021 2833	1.26	\$228.70
021 2834	1.23	\$223.26
021 2835	1.18	\$214.18
021 2836	1.42	\$257.74
021 2837	1.68	\$304.94

2001/2002
 Assessment
Per Acre
 \$181.51

Total Assessment Collected:
 \$8,500.11

**DECLARATION OF PUBLICATION
C.C.P. S2015.5)**

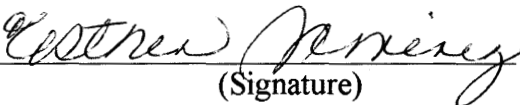
**COUNTY OF STANISLAUS
STATE OF CALIFORNIA**

I am a citizen of the United States and a resident Of the County aforesaid; I am over the age of Eighteen years, and not a party to or interested In the above entitle matter. I am a printer and Principal clerk of the publisher of **THE MODESTO BEE**, printed in the City of **MODESTO**, County of **STANISLAUS**, State of California, daily, for which said newspaper has been adjudged a newspaper of general circulation by the Superior Court of the County of **STANISLAUS**, State of California, Under the date of **February 25, 1951, Action No. 46453**; that the notice of which the annexed is a printed copy, has been published in each issue thereof on the following dates, to wit:

APRIL 22, 28, 2001

I certify (or declare) under penalty of perjury That the foregoing is true and correct and that This declaration was executed at **MODESTO**, California on

APRIL 28, 2001
(date)


(Signature)

**NOTICE OF HEARING REGARDING FISCAL
YEAR 2001/2002 ASSESSMENTS
FOR VARIOUS COUNTY SERVICE AREAS**

NOTICE IS HEREBY GIVEN that on Tuesday, May 8, 2001, at the hour of 9:25 a.m., or as soon thereafter as the matter may be heard, in the Joint Chambers located in the basement of the County/City Administration Building, 1010 10th Street, Modesto, California, the Board of Supervisors of Stanislaus County will hold a public hearing regarding the proposed Fiscal Year 2001/2002 assessments for the following County Service Areas:

CSA NO. 4 - BRISTOL GLEN
CSA NO. 5 - STARLITE PLACE
CSA NO. 6 - RAYMOND TRACT
CSA NO. 7 - MODESTO AUTO CENTER
CSA NO. 8 - HONEY BEE ESTATES
CSA NO. 9 - RIVER/SOUZA
CSA NO. 10 - SALIDA
CSA NO. 11 - GILBERT ROAD
CSA NO. 12 - PEACH BLOSSOM ESTATES
CSA NO. 13 - LA JOLLA
CSA NO. 14 - UNITED PALLET
CSA NO. 15 - PATTERSON GATEWAY

NOTICE IS FURTHER GIVEN that, at the above time and place, interested persons will be given the opportunity to be heard. Material submitted to the Board for consideration (i.e. photos, petitions, etc.) will be retained by the County. If a challenge to the above application is made in court, persons may be limited to raising only those issues they or someone else raised at the public hearing described in this notice, or in written correspondence delivered to the Board. For additional information call Ron Cherrier, Stanislaus County Public Works Department at (209) 525-7571 or (209) 525-6552.

DATE: April 10, 2001

ATTEST: CHRISTINE FERRARO TALLMAN,
Clerk of the Board of Supervisors of the County of Stanislaus, State of California

By: Lillie Farriester
Assistant Clerk of the Board

APRIL 22, 28, 2001