

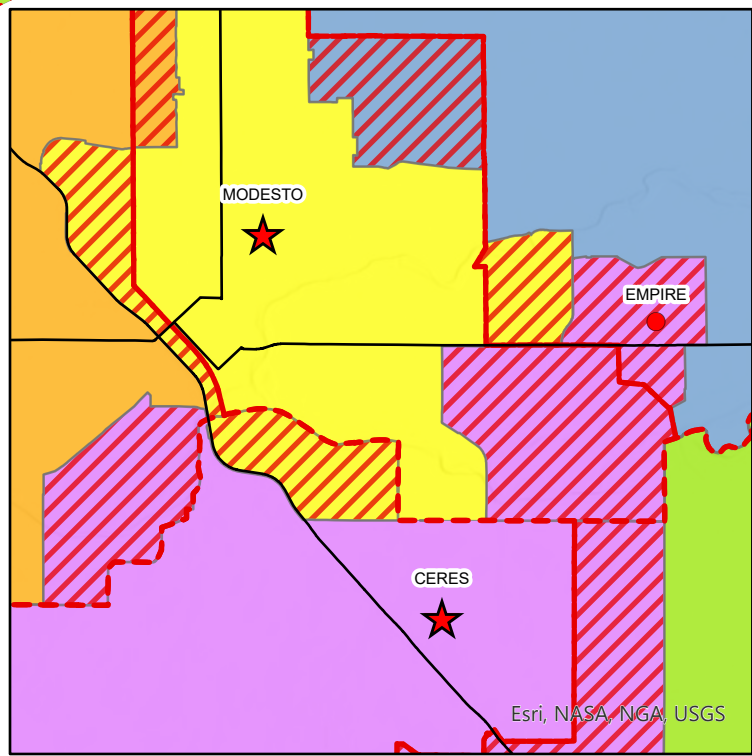
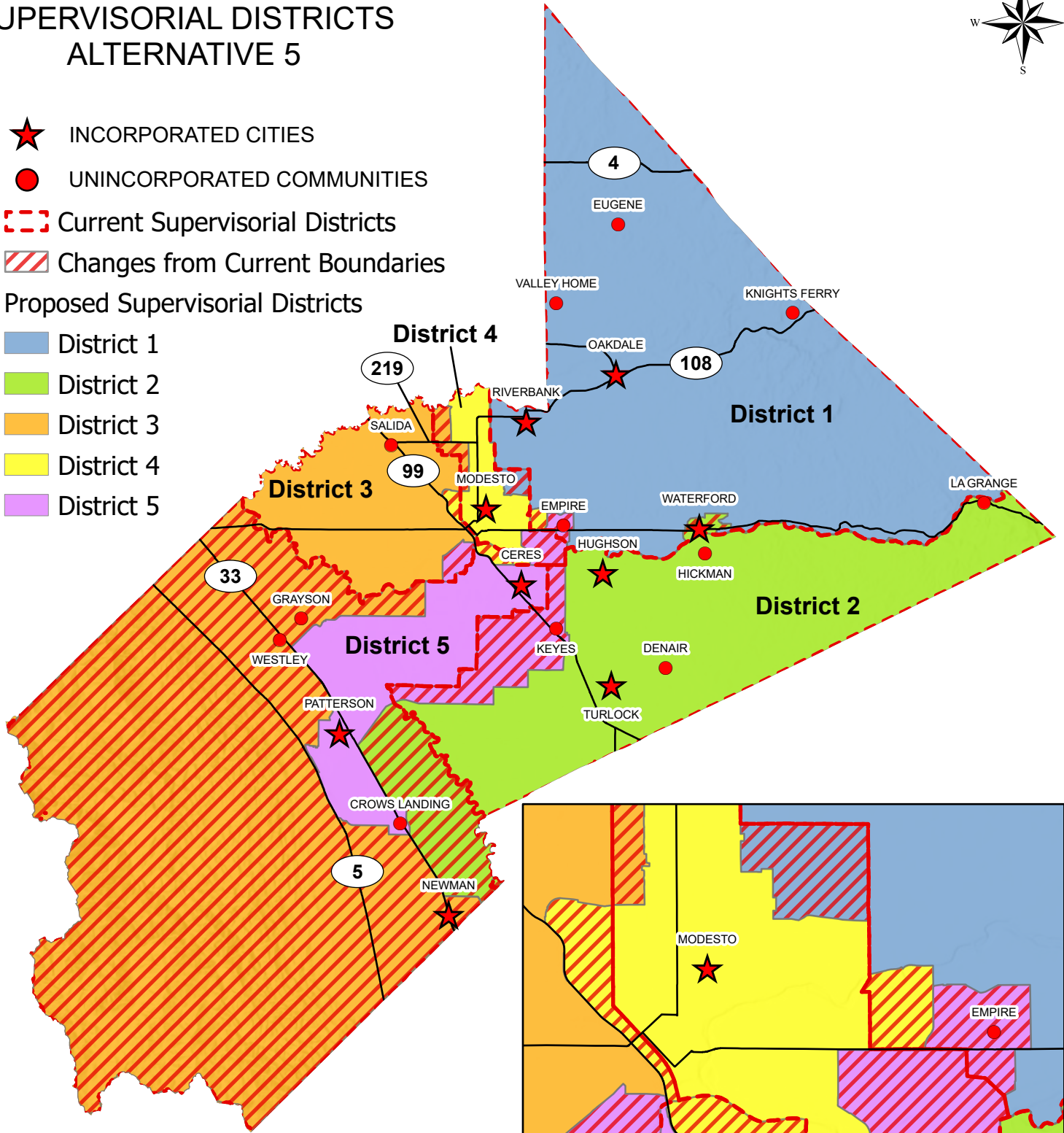
STANISLAUS COUNTY SUPERVISORIAL DISTRICTS ALTERNATIVE 5



- ★ INCORPORATED CITIES
- UNINCORPORATED COMMUNITIES
- - - Current Supervisorial Districts
- ▨ Changes from Current Boundaries

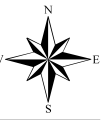
Proposed Supervisorial Districts

- District 1
- District 2
- District 3
- District 4
- District 5



Esri, NASA, NGA, USGS

District 1 - Supervisorial Alternative Map 5



Changes to District 1 from Current District

Alternative 5 District Boundary

Proposed Supervisorial Districts

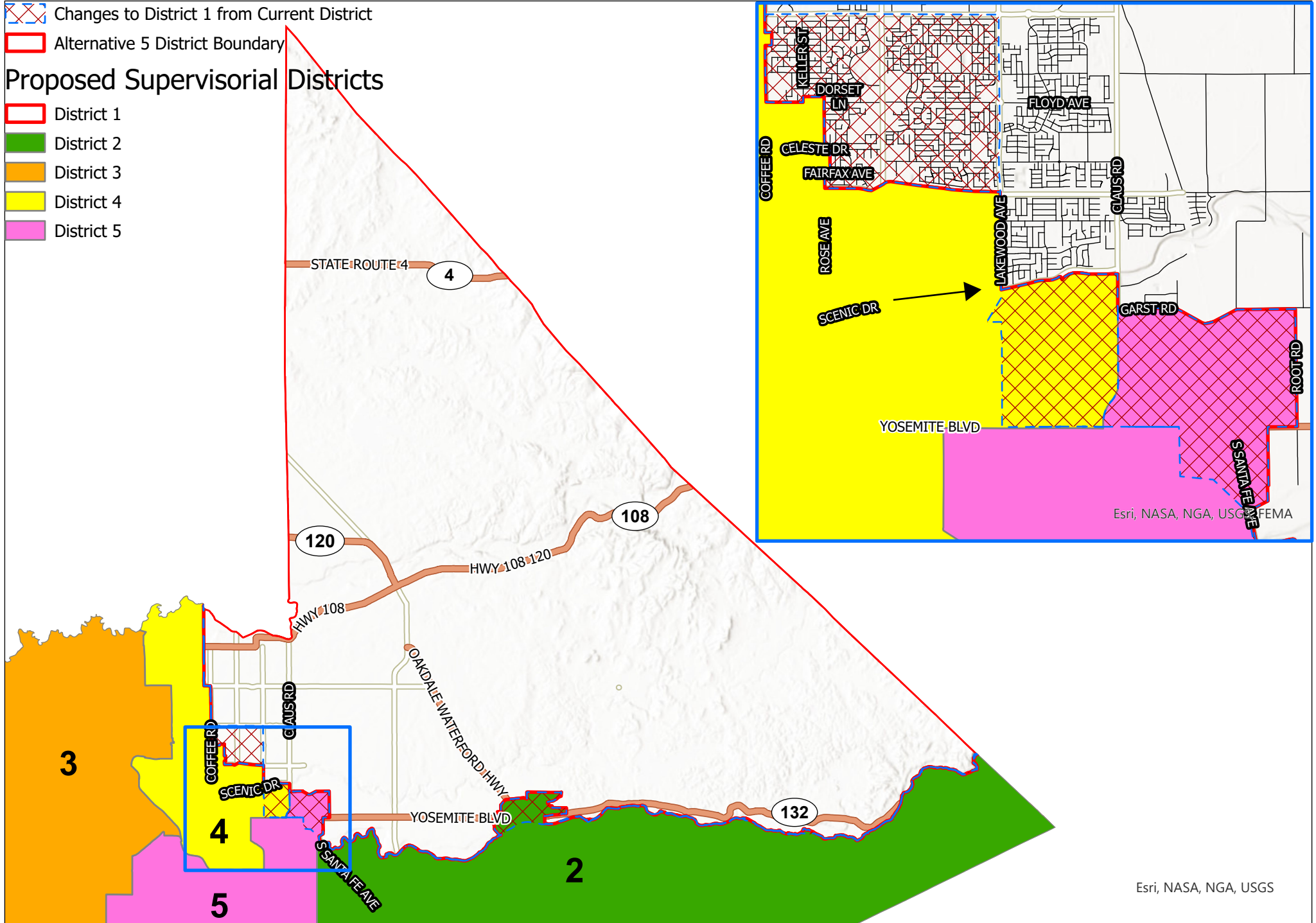
District 1

District 2

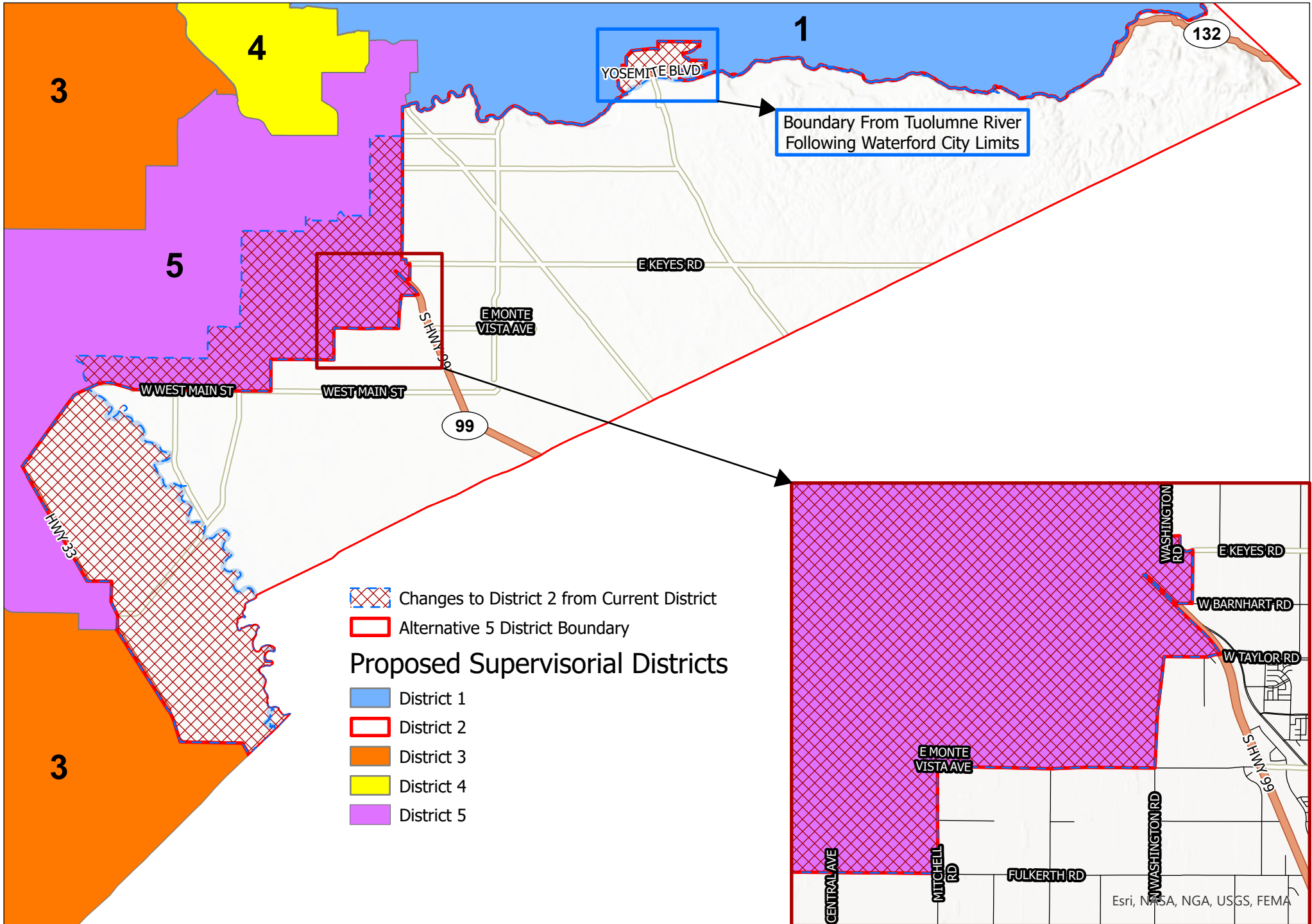
District 3

District 4

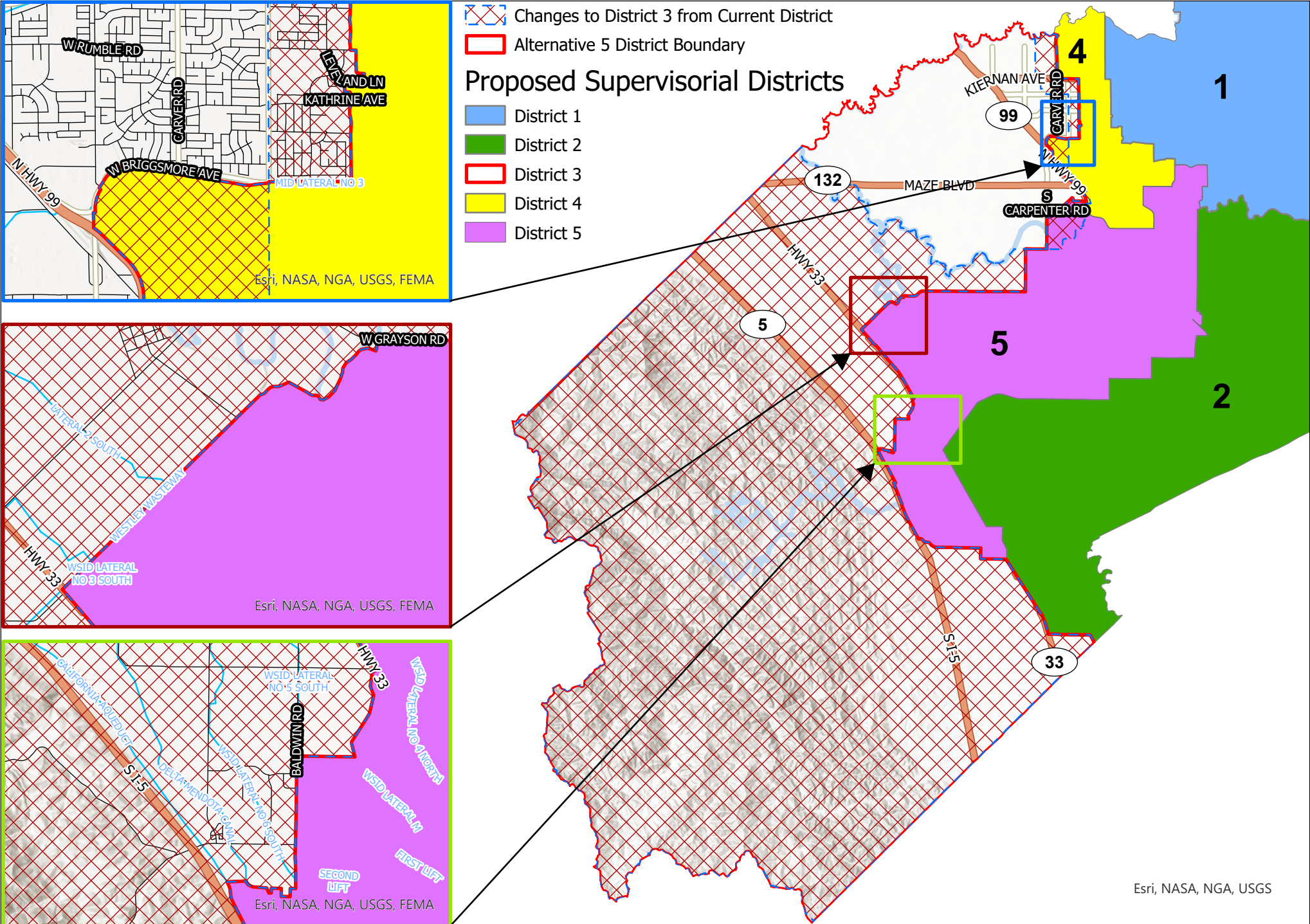
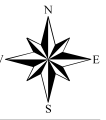
District 5



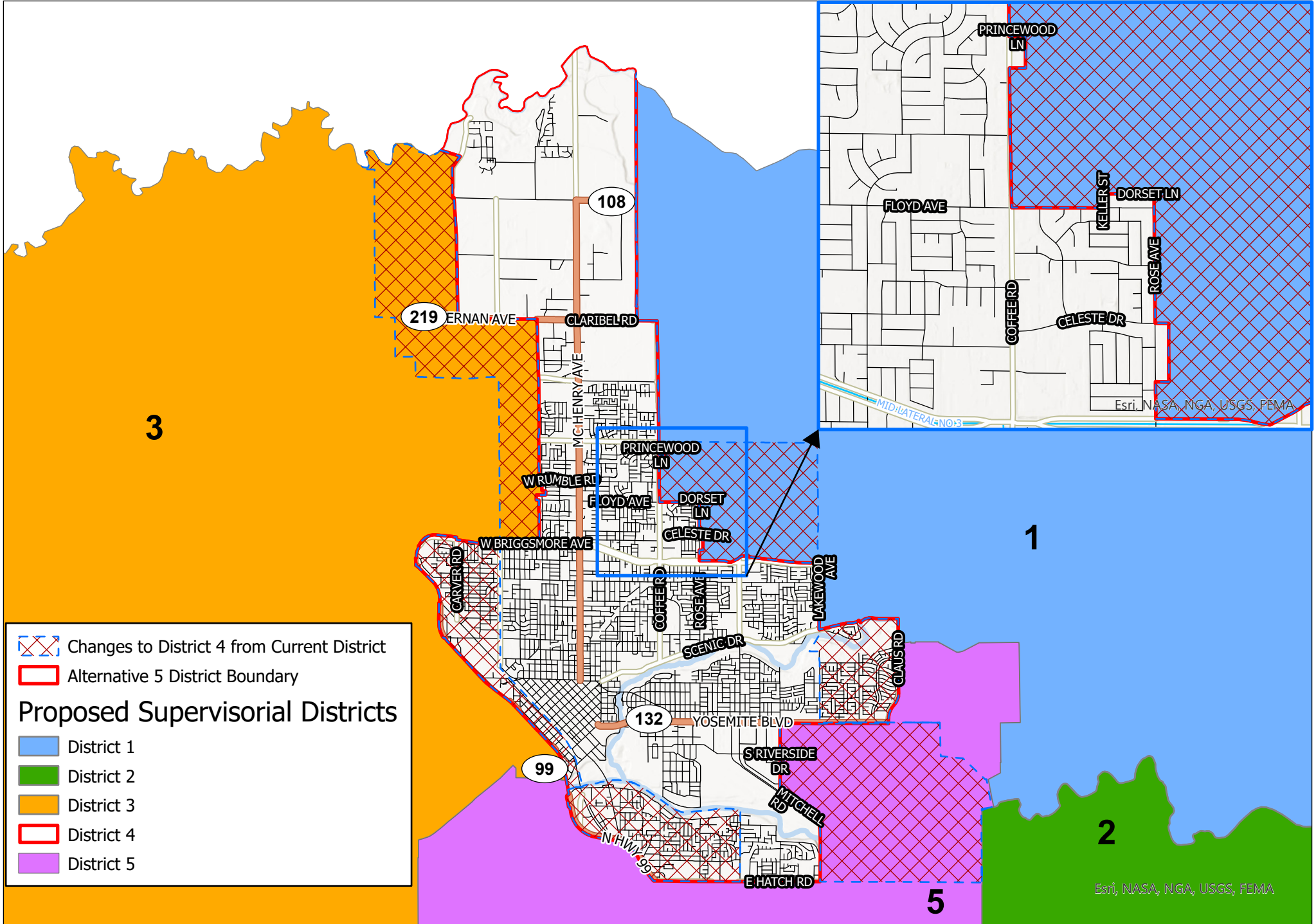
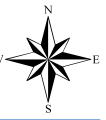
District 2 - Supervisorial Alternative Map 5



District 3 - Supervisorial Alternative Map 5

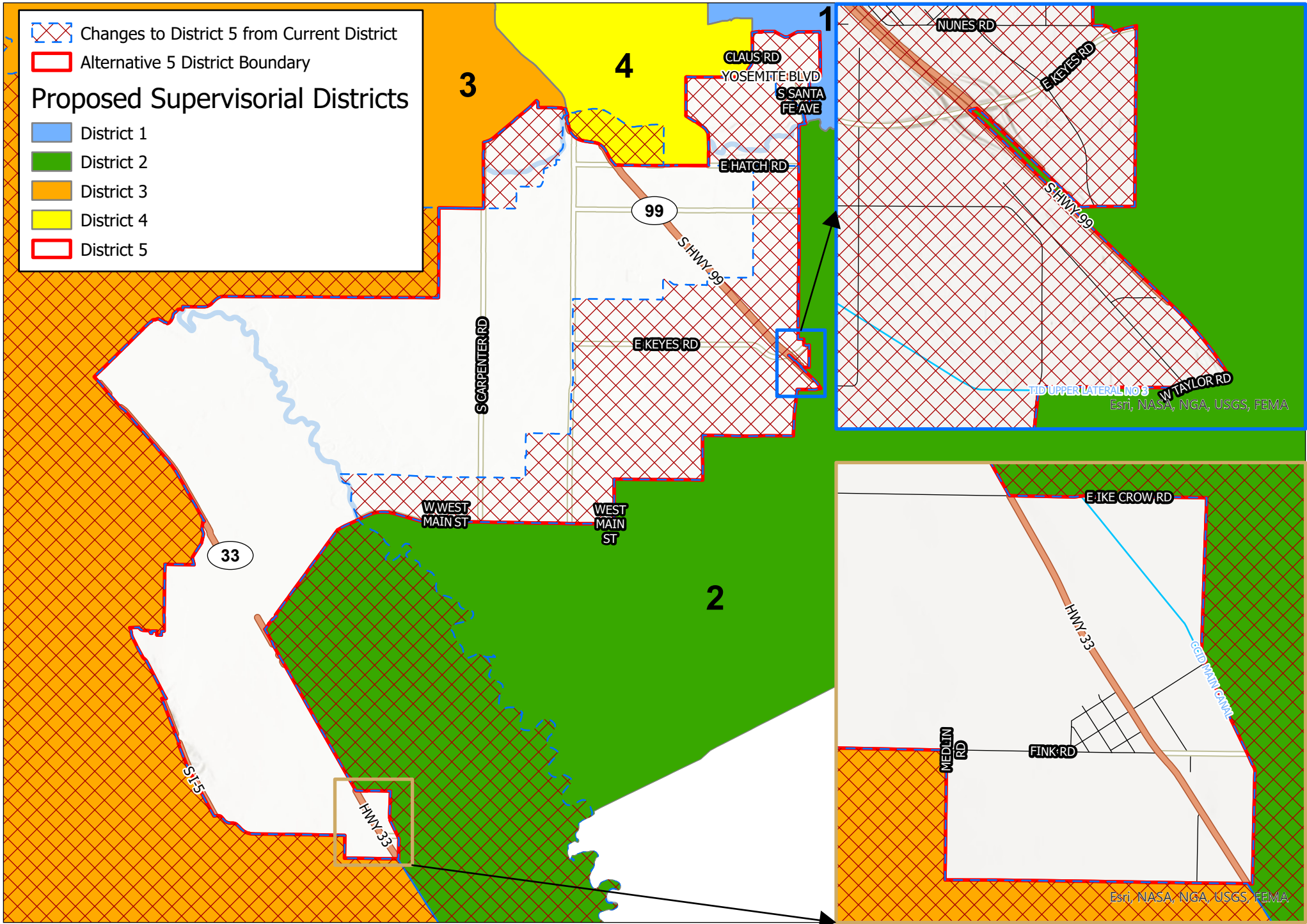


District 4 - Supervisorial Alternative Map 5



Changes to District 4 from Current District
 Alternative 5 District Boundary
Proposed Supervisorial Districts
 District 1
 District 2
 District 3
 District 4
 District 5

District 5 - Supervisorial Alternative Map 5



Supervisorial Alternative Map 5

Census 2020 Population with Race/Ethnicity and Citizen Voting Age Population 2019 (CVAP)

Supervisorial	Population	Population Difference to Target Population	CRITERIA #1		Hispanic	% of Hispanic	NH White	% of NH White	NH Asian	% of NH Asian	NH Black or African American	% of NH Black or African American	NH Native Hawaiian & Other Pacific Islander	% of NH Native Hawaiian & Other Pacific Islander	NH American Indian & Alaska Native	% NH American Indian & Alaska Native		
			% Deviation from Target Population	Population												NH Other	% of NH Other	
District 1	111,639	693	0.62%		40,785	36.53%	54,126	48.48%	7,121	6.38%	2,586	2.32%	735	0.66%	484	0.43%	565	0.51%
District 2	110,826	-120	-0.11%		46,596	42.04%	50,909	45.94%	5,778	5.21%	1,661	1.50%	339	0.31%	535	0.48%	560	0.51%
District 3	107,383	-3,563	-3.21%		53,712	50.02%	36,026	33.55%	7,739	7.21%	3,502	3.26%	1,006	0.94%	482	0.45%	574	0.53%
District 4	108,406	-2,540	-2.29%		46,636	43.02%	44,852	41.37%	5,631	5.19%	3,664	3.38%	904	0.83%	669	0.62%	646	0.60%
District 5	116,476	5,530	4.98%		79,019	67.84%	22,705	19.49%	6,914	5.94%	3,127	2.68%	738	0.63%	474	0.41%	477	0.41%
Total Pop	554,730				266,748	48.09%	208,618	37.61%	33,183	5.98%	14,540	2.62%	3,722	0.67%	2,644	0.48%	2,822	0.51%

Supervisorial	CVAP	CVAP % of Total Pop	Hispanic CVAP	CRITERIA #2		NH White CVAP	% of NH White CVAP	DOJ NH Asian CVAP	% of DOJ NH Asian CVAP	DOJ NH Black or African American CVAP	% of DOJ NH Black or African American CVAP	NH Native Hawaiian & Other Pacific Islander	% of NH Native Hawaiian & Other Pacific Islander	DOJ NH American Indian & Alaska Native	% DOJ NH American Indian & Alaska Native
				% of Hispanic CVAP	NH Asian CVAP										
District 1	72,346	64.80%	19,667	27.18%		44,925	62.10%	4,254	5.88%	1,562	2.16%	538	0.74%	1,010	1.40%
District 2	70,734	63.82%	20,090	28.40%		44,198	62.48%	3,731	5.27%	1,438	2.03%	240	0.34%	877	1.24%
District 3	67,333	62.70%	25,608	38.03%		32,330	48.02%	4,842	7.19%	2,601	3.86%	717	1.06%	744	1.10%
District 4	69,180	63.82%	20,782	30.04%		39,872	57.64%	3,601	5.21%	3,164	4.57%	421	0.61%	988	1.43%
District 5	61,367	52.69%	33,382	54.40%		19,200	31.29%	3,640	5.93%	3,323	5.41%	514	0.84%	830	1.35%
Total Pop	340,960	61.46%	119,529	35.06%		180,525	52.95%	20,068	5.89%	12,088	3.55%	2,430	0.71%	4,449	1.30%

554,730 Stanislaus County total population

110,946 Target Population for each Supervisorial District is the Total population (554,730) divided by the Total number of Supervisor Districts (5)